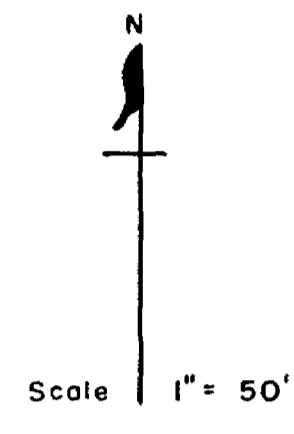
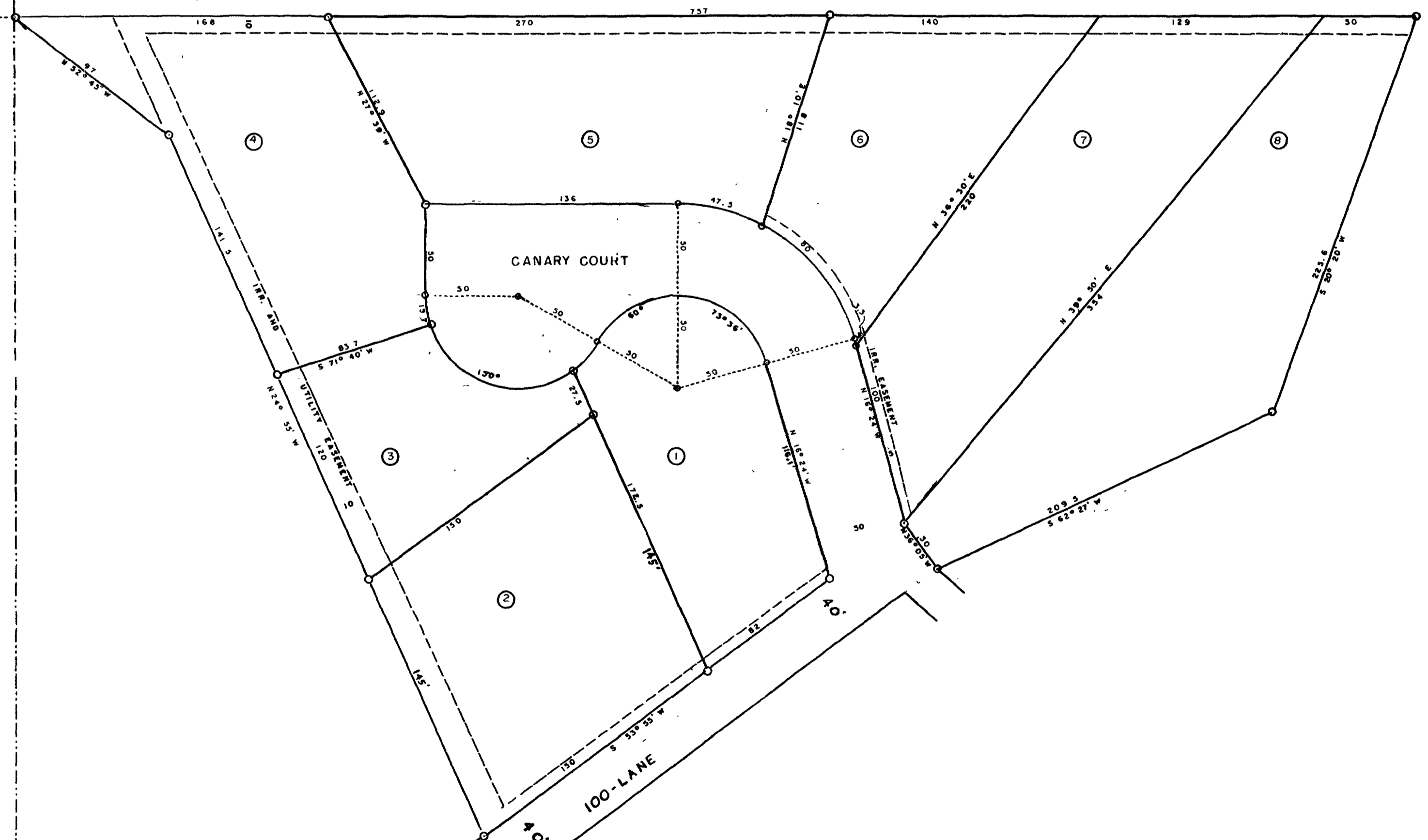


Lora Head, being the owners of the following described tract of land. Beginning at the NW corner of the NE 1/4 SW 1/4 section 16 T1S R1W Ute Meridian, thence East 757 feet, thence S 20° 20' W 225.6 feet, thence S 62° 27' W 209.5 feet, thence N 36° 05' W 30 feet, thence S 53° 55' W 282 feet, thence N 24° 55' W 411.5 feet, thence N 52° 45' W 97 feet to the point of beginning, have caused the same to be surveyed and platted, as shown hereon, have named said place CANARY COURT, and they do hereby set apart and dedicate the road and court, as shown hereon to the use of the public forever, they also dedicate the irrigation and utility easements for the construction, operation and maintenance of telephone and power lines, water, gas and sewer mains, irrigation ditches and other utilities. It is understood and agreed that the County of Mesa shall not be held liable for the cost of construction of the road, ditches or utilities within this subdivision In witness whereof we have hereunto placed our hands this 4th day of March 1958

MESA COUNTY COLORADO  
**CANARY COURT**

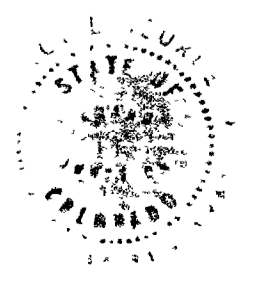


NW cor. NE 1/4 SW 1/4 sec 16  
T1S R1W Ute Mer.



I, Roy L. George, certify that this is a true and correct plat of survey of the above described land and of the subdivision of the of the same

*Roy L. George*  
County Surveyor, R. L. S.



*Charles M Show*  
Charles M Show  
*Dorothy A Shaw*  
Dorothy A Shaw  
*Earl W Head*  
Earl W Head  
*Josephine Lora Head*  
Josephine Lora Head

STATE OF COLORADO SS  
County of Mesa

The foregoing instrument was acknowledged before me by Charles M Show, Dorothy A Shaw, Earl W Head and Josephine Lora Head, this 4th day of March AD 1958 My commission expires January 6, 1959

*L M Finnessey*  
Notary Public



Approved by the Redlands Planning Commission, this 4th day of March 1958

*Wesley J. Macpherson*  
Chairman

Approved by the Mesa County Planning Commission this 4th day of March 1958

*E. J. Guy*

Approved by the Mesa County Commissioners this 4th day of March 1958

*Henry J. Jupper*  
Chairman

713885

I certify this instrument was filed in my office at 11:20 O'clock A. M and is recorded in plat book No 9 at page 38

*Ann M. D... ..*  
Mesa County Clerk and Recorder

By \_\_\_\_\_  
Deputy

112  
112