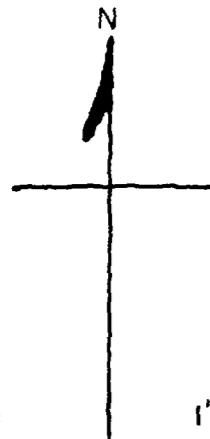
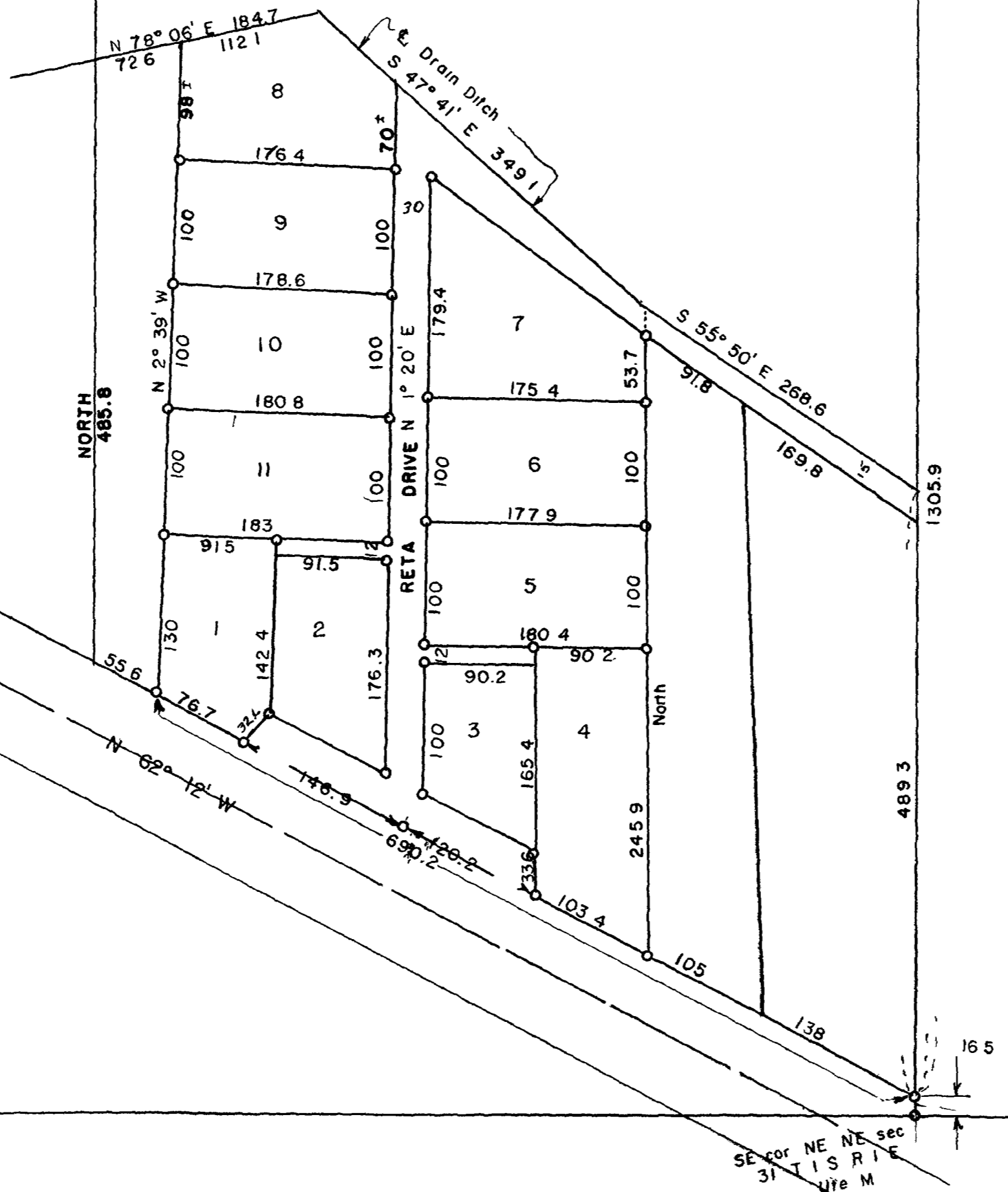


E<sup>2</sup> NE<sup>4</sup> NE<sup>4</sup> sec 31



Scale 1" = 100



STATE OF COLORADO )  
County of Mesa )SS

The foregoing instrument was  
acknowledged before me this 28<sup>th</sup> day of June 1950  
by Jake O Boyles and Evelyn Boyles

My commission expires February 17, 1953

*Jake O Boyles*

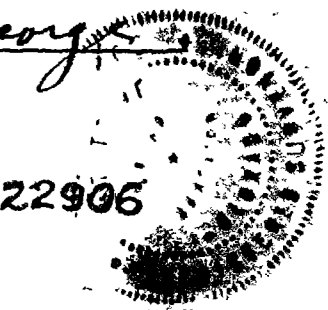
*Evelyn Boyles*

*Helen A. Muel*  
Notary Public



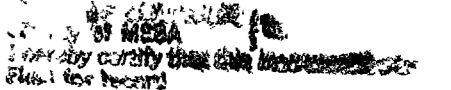
I, Roy L. George, hereby certify that this is a true and  
correct plot of survey of the above described land and the  
subdivision thereof.

*Roy L. George*  
County Surveyor



522905

HILLSIDE PARK  
SUBDIVISION  
MESA COUNTY COLORADO



JUN 30 1950  
109  
E. M.  
E. M.