

CITY OF GRAND JUNCTION, COLORADO

ORDINANCE NO. 2774

AN ORDINANCE ANNEXING TERRITORY TO THE  
CITY OF GRAND JUNCTION, COLORADO

DARLA JEAN ANNEXATION NO. 1 AND 2  
APPROXIMATELY 499 ACRES  
LANDS TO THE NORTHEAST INCLUDING AIRPORT LANDS, AND  
LANDS TO THE SOUTHEAST ON BOTH SIDES OF F ROAD

**WHEREAS**, on the 3rd day of August, 1994 the City Council of the City of Grand Junction considered a petition for the annexation of the following described territory to the City of Grand Junction; and

**WHEREAS**, a hearing on the petition was duly held after proper notice on the 7th day of September, 1994; and

**WHEREAS**, the City Council determined that said territory was eligible for annexation and that no election was necessary to determine whether such territory should be annexed.;

**NOW, THEREFORE, BE IT ORDAINED BY THE CITY COUNCIL OF THE CITY OF GRAND JUNCTION, COLORADO:**

That the property situate in Mesa County, Colorado, and described to wit:

(insert legal description)

be and is hereby annexed to the City of Grand Junction, Colorado.

**INTRODUCED** on first reading on the 7th day of September, 1994.

**ADOPTED** and ordered published this 21st day of September, 1994.

Attest:

/s/ R.T. Mantlo  
President of the Council

/s/ Stephanie Nye  
City Clerk

DARLA JEAN #1

A tract of land in Section 30, Township 1 N, Range 1 E of the Ute Meridian, Mesa County, Colorado, being more particularly described as follows:

Beginning at the northwest corner of the SW 1/4, NW 1/4 of said Section 30; thence south  $54^{\circ} 54'$  east a distance of 50 feet to the TRUE POINT OF BEGINNING; thence north  $35^{\circ} 06'$  east a distance of 1.0 feet to a point; thence south  $54^{\circ} 54'$  east a distance of 700 feet to a point; thence north  $35^{\circ} 06'$  east a distance of 1.0 feet to a point; thence north  $54^{\circ} 54'$  west a distance of 700 feet to a point; thence north  $35^{\circ} 06'$  east a distance of 1.0 feet to a point; thence south  $54^{\circ} 54'$  east a distance of 1401 feet to a point; thence south  $35^{\circ} 06'$  west a distance of 1.0 feet to a point; thence north  $54^{\circ} 54'$  west a distance of 700 feet to a point; thence south  $35^{\circ} 06'$  west a distance of 1.0 feet to a point; thence south  $54^{\circ} 54'$  east a distance of 700 feet to a point; thence south  $35^{\circ} 06'$  west a distance of 1.0 feet to a point; thence north  $54^{\circ} 54'$  west a distance of 1401 feet to the TRUE POINT OF BEGINNING.

DARLA JEAN ANNEXATION #2

A tract of land in Sections 29, 30, 31 and 32, Township 1 N, Range 1 E of the Ute Meridian and Sections 4, 5, 6 and 8, Township 1 S, Range 1 E of the Ute Meridian, Mesa County, Colorado, being more particularly described as follows:

Beginning at the southwest corner of the NW 1/4, NW 1/4 of said Section 30; thence south  $54^{\circ} 54'$  east a distance of 50.0 feet to a point; thence north  $35^{\circ} 06'$  east a distance of 1.0 feet to a point; thence south  $54^{\circ} 54'$  east a distance of 700 feet to a point; thence north  $35^{\circ} 06'$  east a distance of 1.0 feet to a point; thence north  $54^{\circ} 54'$  west a distance of 700 feet to a point; thence north  $35^{\circ} 06'$  east a distance of 1.0 feet to a point; thence south  $54^{\circ} 54'$  east a distance of 1401 feet to a point; thence south  $35^{\circ} 06'$  west a distance of 1.0 feet to a point; thence north  $54^{\circ} 54'$  west a distance of 700 feet to a point; thence south  $35^{\circ} 06'$  west a distance of 1.0 feet to a point; thence south  $54^{\circ} 54'$  east a distance of 700 feet to a point; thence south  $35^{\circ} 06'$  west a distance of 1.0 feet to a point; thence south  $54^{\circ} 54'$  east a distance of 3159 feet to a point on the south line of the NW 1/4, SE 1/4 of said Section 30; thence east along the south line of the north 1/2 of the SE 1/4 of said Section 30; a distance of 1510 feet to the northeast corner of the SE 1/4, SE 1/4 of said Section 30; thence south  $00^{\circ} 28'$  west along the east line of the SE 1/4, SE 1/4 of said Section 30 a distance of 1062.8 feet to a point; thence south  $54^{\circ} 54'$  east a distance of 443.96 feet to a point on the north line of the NW 1/4, NW 1/4 of said Section 32; thence north  $89^{\circ} 42'$  east along the north line of the NW 1/4, NW 1/4 of said Section 32 a distance of 954.69 feet to the northeast corner, NW 1/4, NW 1/4 of said Section 32; thence south  $00^{\circ} 18'$  west along the east line of the north 1/2 of the NW 1/4, NW 1/4 of said Section 32 a distance of 660 feet, more or less to the NE corner of the south 1/2 of the NW 1/4, NW 1/4 of said Section 32; thence south  $55^{\circ} 35'$  west a distance of 1604.9 feet to a point on the west line of the SW 1/4, NW 1/4 of said Section 32; thence south along the west line of the SW 1/4, NW 1/4 of said Section 32 a distance of 147.76 feet to a point; thence north  $89^{\circ} 33' 11''$  east a distance of 505.56 feet to a point; thence south  $46^{\circ} 18' 30''$  east a distance of 1128.07 feet to a point on the east line of the SW 1/4, NW 1/4 of said Section 32; thence south  $00^{\circ} 46' 18''$  west along the east line of the SW 1/4, NW 1/4 of said Section 32 a distance of 156.55 feet to the southeast corner of the SW 1/4, NW 1/4 of said Section 32; thence south  $00^{\circ} 12' 46''$  west along the east line of the NW 1/4, SW 1/4 a distance of 484.74 feet to a point; thence south  $54^{\circ} 48' 26''$  east a distance of 2011.36 feet to a point, said point being on the north right-of-way line of Interstate Highway 70; thence southeasterly along the north right-of-way line of Interstate Highway 70 the following 3 courses:

Revised 8/31/94

1) along a curve to the right having an initial tangent bearing of south  $86^{\circ} 55' 10''$  east and radius of 5855.0 feet a distance of 741.17 feet;

2) South  $83^{\circ} 52' 30''$  east a distance of 340.9 feet;

3) South  $79^{\circ} 40' 00''$  east a distance of 581.40 feet;

thence south  $25^{\circ} 15' 35''$  west a distance of 452.59 feet to a point on the south right-of-way line of the United States Government Highline Canal, said point also being 851.46 feet west of the east line of the SE 1/4, SE 1/4 of said Section 32; thence south  $00^{\circ} 00' 00''$  west a distance of 364.67 feet to a point on the south line of the SE 1/4 of said Section 32; thence south  $89^{\circ} 54' 03''$  east along the south line of the SE 1/4 of said Section 32 a distance of 191.17 feet to a point; thence south  $00^{\circ} 01' 51''$  east a distance of 30.0 feet to the northeast corner of Lot 1 Hamlin Subdivision; thence south  $00^{\circ} 01' 51''$  east along the east line of Lots 1 and 2 of Hamlin Subdivision a distance of 1234.34 ft. to the southeast corner of Lot 2 of Hamlin Subdivision; thence south  $00^{\circ} 01' 51''$  east a distance of 70.00 feet to a point on the north line of Lot 10, Block 1, Brookwood Subdivision; thence south  $89^{\circ} 28' 00''$  east along the north line of Lots 1 through 10, Block 1, Brookwood Subdivision a distance of 627.20 feet to the northeast corner of Lot 1, Block 1, Brookwood Subdivision; thence south  $89^{\circ} 28' 00''$  east a distance of 33.0 ft. to the northeast corner of the SE 1/4, NE 1/4 of said Section 5; thence south  $00^{\circ} 00' 03''$  west along the east line of the SE 1/4, NE 1/4 of said Section 5 a distance of 888.84 feet to a point; thence north  $84^{\circ} 32' 56''$  west a distance of 33.15 feet to the southeast corner of Lot 3, Block 6, Brookwood Subdivision; thence north  $84^{\circ} 32' 56''$  west along the south lot lines of Lots 3, 5, and 6, Block 6, Brookwood Subdivision, a distance of 293.84 feet to the southwest corner of Lot 6, Block 6, Brookwood Subdivision; thence north  $84^{\circ} 32' 56''$  west along the south lot line of Lot 2, Replat of Lots 7, 8, and 9, Block 6, Brookwood Subdivision, a distance of 64.00 feet to a point; thence north  $75^{\circ} 05' 49''$  west along the south lot line of Lot 2, replat of Lots 7, 8 and 9, Block 6, Brookwood Subdivision a distance of 61.94 feet to the southwest corner of said Lot 2; thence north  $75^{\circ} 05' 49''$  west along the south lot lines of Lots 10, 11 and 12, Block 6, Brookwood Subdivision, a distance of 134.95 feet to a point; thence north  $76^{\circ} 45' 07''$  west along the south lot lines of Lots 12 through 17, Block 6, Brookwood Subdivision, a distance of 364.69 feet to a point; thence north  $45^{\circ} 32' 26''$  west along the southwesterly lot lines of lots 17 through 19, Block 6 and lot 6, Block 5, Brookwood Subdivision, a distance of 273.06 feet to a point; thence north  $55^{\circ} 01' 42''$  west along the southwesterly lot lines of Lots 6, 5, 4 and 3, Block 5, a distance of 234.85 feet to a point, said point being on the west line of the SE 1/4, NE 1/4 of said Section 5; thence north  $00^{\circ} 02' 34''$  east along the west line of the SE 1/4, NE 1/4 a distance of 403.93 feet to the northwest corner of the SE 1/4, NE 1/4 of said Section 5; thence north  $89^{\circ} 40' 59''$  west along the north line of the SW 1/4, NE 1/4 of said Section 5 a distance of 1321.45 feet to the northwest corner of the SW 1/4, NE 1/4 of said Section 5; thence north  $00^{\circ} 00' 00''$  east along the east line of the SE 1/4, NE 1/4, NW 1/4 of said Section 5 a distance of 662.29 feet to the northeast corner of the SE 1/4, NE 1/4, NW 1/4 of said Section 5; thence north  $89^{\circ} 53' 07''$  west along the south line of the NE 1/4, NE 1/4, NW 1/4 of said Section 5 a distance of 659.68 feet to the southwest corner of the NE 1/4, NE 1/4, NW 1/4 of said Section 5; thence north  $00^{\circ} 00' 30''$  west along the west line of the NE 1/4, NE 1/4, NW 1/4 a distance of 661.58 feet to the northwest corner of the NE 1/4, NE 1/4, NW 1/4 of said Section 5; thence north  $89^{\circ} 56' 50''$  west along the north line of the NW 1/4 of said Section 5 a distance of 989.67 feet to the northwest corner of the E 1/4, NW 1/4, NW 1/4 of said Section 5; thence south  $00^{\circ} 01' 01''$  east along the west line of the E 1/4, NW 1/4, NW 1/4 of said Section 5 a distance of 1321.03 ft. to a point on the south line of the NW 1/4, NW 1/4 of said Section 5; thence north  $89^{\circ} 49' 24''$  west along the south line of the NW 1/4, NW 1/4 a distance of 495.06 feet to a point; thence south  $00^{\circ} 00' 10''$  west a distance of 485.91 feet to a

point; thence south 89° 54' 20" west a distance of 494.68 feet to a point on the west line of the SW 1/4, NW 1/4 of said Section 5; thence south 00° 01' 26" west along the west line of the SW 1/4, NW 1/4 a distance of 829.87 feet to the southwest corner of the NW 1/4 of said Section 5; thence north 89° 48' 35" west along the north right-of-way line of F 1/2 Road a distance of 657.57 feet to a point; thence south 00° 09' 02" west a distance of 106.00 feet to the northeast corner of Lot 7, Block 6 Darla Jean Subdivision; thence south 58° 04' 25" west along the northwesterly lot lines of Lots 7 through 10, Block 6, Darla Jean Subdivision, a distance of 252.00 feet to a point; thence south 66° 27' 25" west along the northwesterly lot lines of lots 10 through 13, Block 6, Darla Jean Subdivision, a distance of 295.00 feet to a point; thence south 38° 25' 25" west along the northwesterly lot lines of lots 13 through 15, Block 6, Darla Jean Subdivision, a distance of 281.68 feet to a point; thence south 00° 12' 25" west along the western boundary of Darla Jean Subdivision a distance of 740.54 feet to the southwest corner of Darla Jean Subdivision; thence south 89° 49' 56" east along the south boundary of Darla Jean Subdivision a distance of 1317.73 feet to the southeast corner of the NE 1/4, SE 1/4 of said Section 6; thence south 00° 05' 40" west along the east line of the SE 1/4, SE 1/4 of said Section 6 a distance of 1320 feet to the southeast corner of said Section 6; thence south along the west line of the NW 1/4, NW 1/4 of said Section 8 a distance of 535 feet to a point; thence east 330 feet to a point; thence south 125 feet to a point on the south line of the NW 1/4, NW 1/4, NW 1/4 of said Section 8; thence east along the south line of the west 1/2, NE 1/4, NW 1/4, NW 1/4 of said Section 8 a distance of **330.03 feet to a point; thence south 330.0 feet to a point; thence east a distance of 20.0 feet** to a point on the east right-of-way line of Kokopelli Lane; thence south along said right-of-way line a distance of 231 feet to a point; thence east 200 feet to a point; thence south 99 feet to a point on the south line of the NW 1/4, NW 1/4 of said Section 8; thence east along the south line of the NW 1/4, NW 1/4 of said Section 8 a distance of 440 feet to the southeast corner of the NW 1/4, NW 1/4 of said Section 8, thence north 17° 59' 10" west a distance of 2.27 feet to the southwest corner of Lot 2, Block 3, Sroufe Subdivision; thence north 89° 57' 34" east along the south line of lots 2 and 1, Sroufe Subdivision a distance of 185.70 feet to the southwest corner of Lot 10, Block 2, New Beginnings Subdivision; thence north 89° 59' 11" east along the south line of lots 10 and 9 Block 2, New Beginnings Subdivision a distance of 211.19 feet to the southeast corner of said Lot 9; thence north 00° 02' 50" west along the east boundary of New Beginnings subdivision a distance of 1267.81 feet to the northeast corner of Lot 2, Block 1, New Beginnings Subdivision, said point being 50 feet south of the north line of the NW 1/4 of said Section 8; thence north 89° 59' 16" east parallel with the north line of the NW 1/4 of said Section 8 a distance of 759.63 feet to a point on the west line of Lot 1, Block 1, North Park Estates Subdivision; thence south 00° 05' east along the west line of Lots 1 and 2, Block 1, North Park Estates Subdivision, a distance of 167.87 feet to the southwest corner of Lot 2, Block 1, North Park Estates Subdivision; thence east along the south line of Lot 2, Block 1, North Park Estates Subdivision, a distance of 135.22 feet to the southeast corner of said Lot 2; thence north 00° 05' west along the east lines of lots 2 and 1, Block 1, North Park Estates Subdivision a distance of 167.87 feet to a point; thence east parallel with the north line of the NW 1/4 of said Section 8 a distance of 30.00 feet to a point on the east line of the NW 1/4 of said Section 8; thence east parallel with the north line of the NE 1/4 of said Section 8 a distance of 165.26 feet to the northwest corner of Lot 25, Greenfield Run Subdivision; thence east along the north line of Greenfield Run Subdivision a distance of 330.89 feet to a point; thence south 00° 01' 44" east along the east boundary line of Greenfield Run Subdivision a distance of 1267.79 feet to a point on the south line of the NW 1/4, NE 1/4

of said Section 8; thence south  $89^{\circ} 54' 09''$  east along the south line of the NW 1/4, NE 1/4 of said Section 8 a distance of 620.85 feet to the southwest corner of Lot 3, Block 1, Cody Subdivision; thence south  $89^{\circ} 58' 40''$  east along the south lines of Lots 3, 2, and 1, Block 1, Cody Subdivision, a distance of 205.38 feet to the southeast corner of Lot 1, Block 1, Cody Subdivision; thence North  $00^{\circ} 07' 21''$  west along the east boundary of Cody Subdivision a distance of 1318.70 feet to the northeast corner of the NW 1/4, NE 1/4 of said Section 8; thence North  $00^{\circ} 07' 21''$  west a distance of 50.0 feet to a point on the north right-of-way line of F Road; thence south  $89^{\circ} 57' 56''$  west parallel with the south line of the SW 1/4, SE 1/4 of said Section 5 a distance of 1326.63 feet to a point on the east line of the SE 1/4, SW 1/4 of said Section 5; thence west parallel with the south line of the east 1/2 of the SE 1/4, SW 1/4 of said Section 5 a distance of 660.32 feet to a point on the west line of the east 1/2 of SE 1/4, SW 1/4 of said Section 5; thence north along the west line of the east 1/2 of the SE 1/4, SW 1/4 of said Section 5 a distance of 1270 feet to the northwest corner of the east 1/2 of the SE 1/4 SW 1/4 of said Section 5; thence west along the north line of the west 1/2 of the SE 1/4, SW 1/4 of said Section 5 a distance of 535 feet to the northeast corner of Lot 10, Block 5, Cris-Mar Subdivision; thence South  $00^{\circ} 08' 22''$  east along the east lines of lots 10 through 14, Block 5 and Lot 12, Block 2, Cris-Mar Subdivision a distance of 659.83 feet to the southeast corner of Lot 12, Block 2, Cris-Mar Subdivision; thence south  $89^{\circ} 59' 10''$  east along the north line of lot 11, Block 2, Cris-Mar Subdivision a distance of 70.00 feet to the northeast corner of said Lot 11; thence south  $00^{\circ} 08' 22''$  east along the east lot lines of lots 11, 10, 9, 8 and 7, Block 2, Cris-Mar Subdivision a distance of 371.83 feet to a point; thence south parallel with the west line of the SE 1/4, SW 1/4 of said Section 5 a distance of 288 feet to a point on the south line of the SE 1/4, SW 1/4 of said Section 5; thence west along the south line of the SE 1/4, SW 1/4 of said Section 5 a distance of 34.3 feet to a point; thence south  $00^{\circ} 02' 46''$  east a distance of 50.0 feet to the northwest corner of New Beginnings Subdivision; thence south  $00^{\circ} 02' 46''$  east along the west boundary of New Beginnings Subdivision a distance of 1168.83 feet to a point on the north line of Lot 1, Block 3, Sroufe Subdivision; thence south  $89^{\circ} 57' 14''$  west along the north lot lines of Lots 1 and 2, Block 3, Sroufe Subdivision a distance of 160.70 feet to the northwest corner of Lot 2, Block 3, Sroufe Subdivision; thence north  $00^{\circ} 02' 48''$  west along the west boundary of Sroufe Subdivision a distance of 560.0 feet to the southwest corner of Lot 7, Block 1, Sroufe Subdivision; thence south  $89^{\circ} 57' 41''$  west along the south boundary of Redwing Subdivision a distance of 330.96 feet to the southwest corner of Lot 8, Redwing Subdivision; thence north  $00^{\circ} 03' 00''$  west along the west boundary of Redwing Subdivision a distance of 609.33 feet to the northwest corner of Lot 1, Redwing Subdivision, said point being 50 ft. south of the north line of the NW 1/4, NW 1/4 of said Section 8; thence west parallel with and 50 feet south of the north line of the NW 1/4, NW 1/4 of said Section 8 a distance of 660.14 feet to a point; thence north 50 feet to a point on the north line of the NW 1/4, NW 1/4 of said Section 8; thence north  $00^{\circ} 06' 46''$  west a distance of 50.0 feet to the southeast corner of Lot 3, Plaza "29" Subdivision; thence north  $00^{\circ} 06' 46''$  west along the east lot lines of lots 3, 4 and 6, Plaza "29" Subdivision a distance of 214.0 feet to a point; thence south  $89^{\circ} 59' 59''$  east a distance of 330.0 feet to a point; thence north  $00^{\circ} 06' 46''$  west a distance of 164.91 feet to a point; thence north  $89^{\circ} 59' 28''$  west a distance of 658.47 feet to a point, 2 feet east of the west line of the SW 1/4, SW 1/4 of said Section 5; thence north  $00^{\circ} 05' 21''$  west parallel with the west line of the SW 1/4, SW 1/4 of said Section 5 a distance of 231.00 feet to a point; thence east a distance of 28.0 feet to the southwest corner of Lot 1, Block 3, Morning Glory Subdivision; thence

north along the west lot lines of Lot 1, Block 3 and Lot 1, Block 4, Morning Glory Subdivision a distance of 330.0 feet to the northwest corner of Lot 1, Block 4, Morning Glory Subdivision; thence south  $89^{\circ} 48' 24''$  east a distance of 10.0 feet to the southwest corner of Lot 16, Karen Lee Subdivision First Addition; thence north  $00^{\circ} 05' 40''$  east along the west lot lines of Lots 16 and 1, Karen Lee Subdivision First Addition a distance of 330.01 feet to the northwest corner of Lot 1, Karen Lee Subdivision First Addition; thence north  $89^{\circ} 48' 24''$  west a distance of 40.0 feet to the northwest corner of the SW 1/4, SW 1/4 of said Section 5; thence north  $00^{\circ} 05' 40''$  east along the west line of the NW 1/4, SW 1/4 of said Section 5 a distance of 1320 feet to the northwest corner of the SW 1/4 of said Section 5; thence east along the south line of the SW 1/4, NW 1/4 of said Section 5 a distance of 285 feet to a point; thence north 390 feet to a point, thence east 210 feet to a point; thence north 55.5 feet to a point on the south line of the Palisade Canal; thence along said canal line the following 19 courses and distances:

- 1) South  $74^{\circ} 35' 29''$  east a distance of 144.58 feet;
- 2) North  $50^{\circ} 34' 19''$  east a distance of 30.35 feet;
- 3) North  $32^{\circ} 27' 54''$  east a distance of 64.25 feet;
- 4) North  $48^{\circ} 46' 11''$  east a distance of 45.88 feet;
- 5) North  $60^{\circ} 05' 20''$  east a distance of 49.77 feet;
- 6) North  $71^{\circ} 13' 13''$  east a distance of 41.98 feet;
- 7) North  $75^{\circ} 39' 10''$  east a distance of 5.98 feet;
- 8) North  $75^{\circ} 39' 10''$  east a distance of 163.09 feet;
- 9) South  $77^{\circ} 27' 59''$  east a distance of 354.96 feet;
- 10) North  $67^{\circ} 38'$  east a distance of 185 feet;
- 11) North  $49^{\circ}$  east a distance of 122 feet;
- 12) North  $58^{\circ} 04'$  east a distance of 325 feet;
- 13) South  $65^{\circ} 17'$  east a distance of 169 feet;
- 14) North  $80^{\circ} 27'$  east a distance of 47 feet;
- 15) North  $64^{\circ} 07' 03''$  east a distance of 416.55 feet;
- 16) South  $87^{\circ} 00' 34''$  east a distance of 54.95 feet;
- 17) South  $60^{\circ} 19' 47''$  east a distance of 73.57 feet;
- 18) South  $72^{\circ} 43' 44''$  east a distance of 63.96 feet;
- 19) North  $87^{\circ} 34' 10''$  east a distance of 40.21 feet

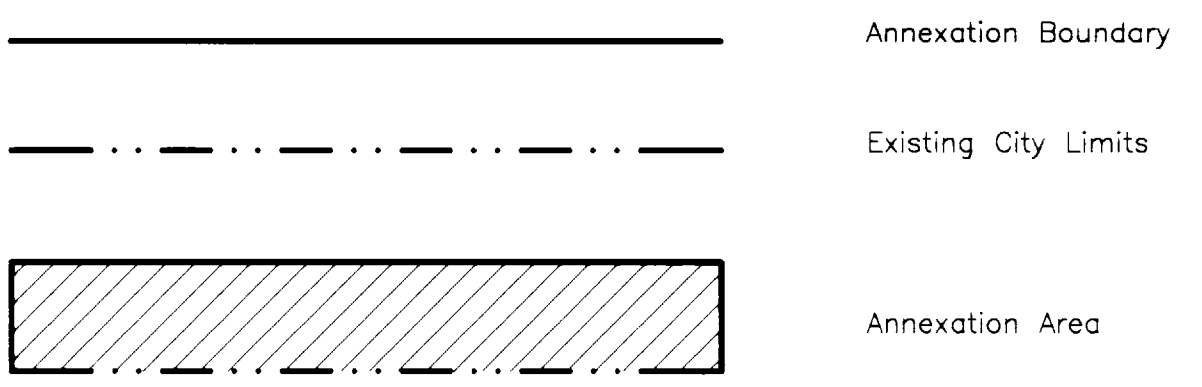
to a point on the east line of the SE 1/4, NW 1/4 of said Section 5; thence south along the east line of the SE 1/4, NW 1/4 of said Section 5; a distance of 122.86 feet to a point; thence east 826.67 feet to a point; thence south  $45^{\circ} 07'$  west a distance of 163.78 feet to a point; thence north  $89^{\circ} 40' 12''$  west a distance of 49.66 feet to a point on the east line of the west 1/2 of the SW 1/4, NE 1/4 of said Section 5; thence south  $00^{\circ} 01' 08''$  east a distance of 655.93 feet to the southwest corner of the SE 1/4, SW 1/4, NE 1/4 of said Section 5; thence south  $89^{\circ} 42' 54''$  east along the south line of the SE 1/4, SW 1/4, NE 1/4 of said Section 5 a distance of 661.16 feet to the southwest corner of the SE 1/4, NE 1/4 of said Section 5; thence south  $86^{\circ} 42' 54''$  east along the south line of the SE 1/4, NE 1/4 of said Section 5 a distance of 1322.32 feet to the southeast corner of the NE 1/4 of said Section 5; thence east along the south line of the SW 1/4, SW 1/4, NW 1/4 of said Section 4 a distance of 660.10 feet to the southeast corner of the SW 1/4, SW 1/4, NW 1/4 of said Section 4, thence north along the east line of the west 1/2 of the SE 1/4, NW 1/4 of said Section 4 a distance of 1312.42 feet to the northeast corner of the NW 1/4, SW 1/4, NW 1/4 of said Section 4; thence west along the north line of the NW 1/4, SW 1/4, NW 1/4 of said Section 4 a distance of 407.30 feet to a point; thence north  $00^{\circ} 00' 48''$  west along the east line of Lot 8, Block 3, Palmyra Subdivision a distance of 335.26 feet to the northeast corner of Lot 8, Block 3, Palmyra Subdivision; thence north  $89^{\circ} 50' 28''$  west along the north line of Lot 8, Block 3, Palmyra Subdivision a distance of 219.95 feet to the northwest corner of said Lot 8; thence north  $89^{\circ} 50' 28''$  west a distance of 33.0 feet to the west line of the NW 1/4, NW 1/4 of said Section 4; thence north along the west line of the NW

1/4, NW 1/4 of said Section 4 a distance of 977.61 feet to the northwest corner of said Section 4; thence north along the east line of the SE 1/4, SE 1/4 of said Section 32 a distance of 500.0 feet to a point; thence west parallel with the south line of the SE 1/4, SE 1/4 of said Section 32 a distance of 20 feet to a point; thence north parallel with the east line of the SE 1/4, SE 1/4 of said Section 32 a distance of 800 feet to a point; said point being 20 feet south and 20 feet west of the northeast corner of the SE 1/4, SE 1/4 of said Section 32; thence west parallel with the north line of the SE 1/4, SE 1/4 of said Section 32 a distance of 1300 feet to a point on the west line of the SE 1/4, SE 1/4 of said section 32; thence west parallel with the north line of the SW 1/4, SE 1/4 of said Section 32 a distance of 20 feet; thence north parallel with the east line of the SW 1/4, SE 1/4 of said Section 32 a distance of 20 feet to a point on the north line of the SW 1/4, SE 1/4 of said Section 32; thence north parallel with the east line of the NW 1/4, SE 1/4 of said Section 32 a distance of 1320 feet to a point on the north line of the NW 1/4, SE 1/4 of said Section 32; thence west along the north lines of the NW 1/4, SE 1/4 and NE 1/4, SW 1/4 of said Section 32 a distance of 2600 feet to a point, said point being 20 feet east of the southwest corner of the SE 1/4, NW 1/4 of said Section 32; thence north parallel with the west line of the SE 1/4, NW 1/4 of said Section 32 a distance of 1320 feet to a point on the north line of the SE 1/4, NW 1/4 of said Section 32; thence north parallel with the west line of the NE 1/4, NW 1/4 of said Section 32 a distance of 1320 feet to a point on the north line of the NE 1/4, NW 1/4 of said Section 32; thence north parallel with the west line of the SE 1/4, SW 1/4 of said Section 29 a distance of 20 feet to a point; thence west parallel with the south line of the SE 1/4, SW 1/4 of said Section 29 a distance of 20 feet to a point on the west line of the SE 1/4, SW 1/4 of said Section 29; thence north along the west line of the SE 1/4, SW 1/4 of said Section 29 a distance of 1300 feet to the northwest corner of the SE 1/4, SW 1/4 of said Section 29; thence west along the north line of the SW 1/4, SW 1/4 a distance of 1300 feet to a point; thence north parallel with the west line of the NW 1/4, SW 1/4 of said Section 29 a distance of 20 feet to a point; thence west parallel with the south line of the NW 1/4, SW 1/4 of said Section 29 a distance of 20 feet to a point on the west line of the NW 1/4, SW 1/4 of said Section 29; thence west parallel with the south line of the NE 1/4, SE 1/4 of said Section 30 a distance of 1320 feet to a point on the west line of the NE 1/4, SE 1/4 of said Section 30; thence north along the west line of the NE 1/4, SE 1/4 of said Section 30 a distance of 1280 feet to a point, said point being 20 feet south of the northwest corner of the NE 1/4, SE 1/4 of said Section 30; thence west parallel with the north line of the NW 1/4, SE 1/4 a distance of 1320 feet to a point on the west line of the NW 1/4, SE 1/4 of said Section 30; thence west parallel with the north line of the NE 1/4, SW 1/4 of said Section 30 a distance of 20 feet to a point; thence north 62° 54' 45" west a distance of 2942.79 feet to the point of beginning.



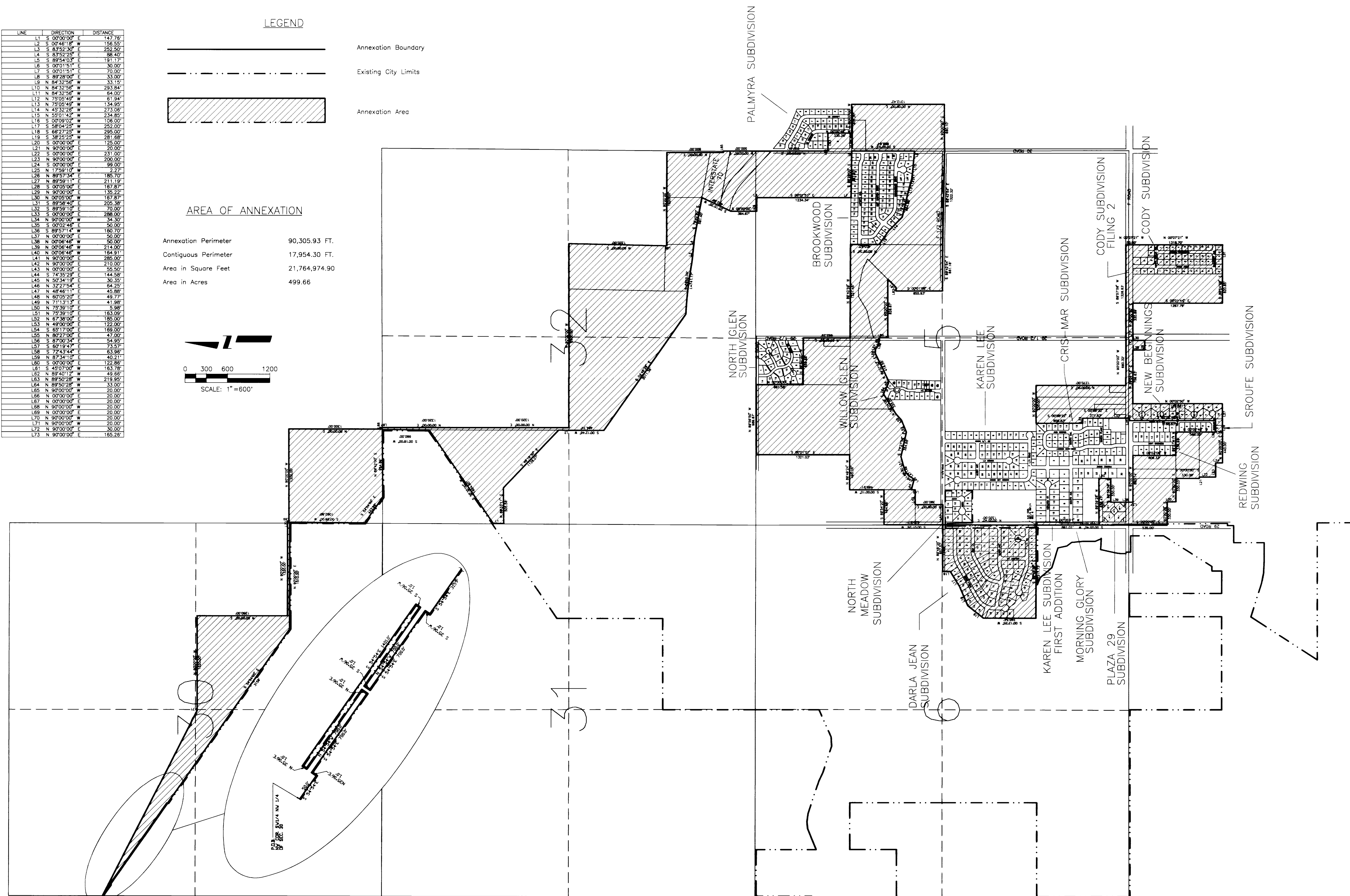
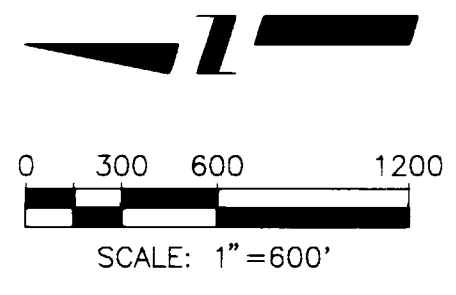
LINE	DIRECTION	DISTANCE
L1	S 00°00'00" E	147.76'
L2	S 00°46'18" W	156.55'
L3	S 83°52'30" E	252.50'
L4	S 83°52'25" E	88.40'
L5	S 89°54'03" E	191.17'
L6	S 00°01'51" E	30.00'
L7	S 00°01'51" E	70.00'
L8	S 89°28'00" E	33.00'
L9	N 84°32'56" W	33.15'
L10	N 84°32'56" W	283.84'
L11	N 84°32'56" W	64.00'
L12	N 79°05'49" W	81.94'
L13	N 79°05'49" W	134.95'
L14	N 49°32'26" W	273.06'
L15	N 55°01'42" W	234.85'
L16	S 00°09'02" W	106.00'
L17	S 58°04'25" W	252.00'
L18	S 66°27'25" W	295.00'
L19	S 36°25'25" W	281.68'
L20	S 00°00'00" E	125.00'
L21	N 90°00'00" E	20.00'
L22	S 00°00'00" E	231.00'
L23	N 90°00'00" E	200.00'
L24	S 00°00'00" E	99.00'
L25	N 17°59'10" W	2.27'
L26	N 89°57'34" E	185.70'
L27	N 89°59'11" E	211.19'
L28	S 00°05'00" E	187.87'
L29	N 90°00'00" E	135.22'
L30	N 00°05'00" W	167.87'
L31	S 89°58'40" E	205.38'
L32	S 89°59'10" E	70.00'
L33	S 00°00'00" E	288.00'
L34	N 90°00'00" W	34.30'
L35	S 00°02'48" E	50.00'
L36	S 89°57'14" W	160.70'
L37	N 00°00'00" E	50.00'
L38	N 00°06'46" W	50.00'
L39	N 00°06'46" W	214.00'
L40	N 00°06'46" W	164.91'
L41	N 90°00'00" E	285.00'
L42	N 90°00'00" E	210.00'
L43	N 00°00'00" E	55.50'
L44	S 74°35'29" E	144.58'
L45	N 30°34'19" E	30.35'
L46	N 32°27'54" E	64.25'
L47	N 48°46'11" E	45.88'
L48	N 60°05'20" E	49.77'
L49	N 71°13'13" E	41.98'
L50	N 75°39'10" E	5.98'
L51	N 75°39'10" E	163.09'
L52	N 87°36'00" E	185.00'
L53	N 49°00'00" W	122.00'
L54	S 65°17'00" E	169.00'
L55	N 80°27'00" E	47.00'
L56	S 87°00'30" E	54.95'
L57	S 60°19'47" E	73.57'
L58	S 72°43'44" E	63.96'
L59	N 87°34'10" E	40.21'
L60	S 00°00'00" E	122.86'
L61	S 45°07'00" W	163.78'
L62	N 89°40'12" W	49.66'
L63	N 89°50'26" W	219.95'
L64	N 89°50'26" W	33.00'
L65	N 90°00'00" W	20.00'
L66	N 00°00'00" E	20.00'
L67	N 00°00'00" E	20.00'
L68	N 90°00'00" W	20.00'
L69	N 00°00'00" E	20.00'
L70	N 90°00'00" W	20.00'
L71	N 90°00'00" W	20.00'
L72	N 90°00'00" E	30.00'
L73	N 90°00'00" E	165.26'

**LEGEND**



**AREA OF ANNEXATION**

Annexation Perimeter	90,305.93 FT.
Contiguous Perimeter	17,954.30 FT.
Area in Square Feet	21,764,974.90
Area in Acres	499.66



DESCRIPTION	DATE	DRAWN BY	N.O.P.	DATE	8/19/94	SCALE
REVISION $\Delta$		CHECKED BY	J.L.S.	DATE	9/30/94	HORIZ. 1"=600' VERT.
REVISION $\Delta$		APPROVED BY	J.L.S.	DATE	10/4/94	
REVISION $\Delta$		FIELD BOOK NO.		PAGE		

**DEPARTMENT OF PUBLIC WORKS AND UTILITIES**  
**ENGINEERING DIVISION**  
**CITY OF GRAND JUNCTION, COLORADO**

**DARLA JEAN**  
**ANNEXATION # 2**

SHEET NO.	3
OF	3
FILE NO.	DARLA3.DWG



DARLA JEAN ANNEXATION #2

A tract of land in Sections 29, 30, 31 and 32, Township 1 N, Range 1 E of the Ute Meridian and Sections 4, 5, 6 and 8, Township 1 S, Range 1 E of the Ute Meridian, Mesa County, Colorado, being more particularly described as follows:

Beginning at the southwest corner of the NW 1/4, NW 1/4 of said Section 30; thence south 54° 54' east a distance of 50.0 feet to a point; thence north 35° 06' east a distance of 1.0 feet to a point; thence south 54° 54' east a distance of 70.0 feet to a point; thence north 35° 06' east a distance of 1.0 feet to a point; thence north 54° 54' west a distance of 700 feet to a point; thence north 35° 06' east a distance of 1.0 feet to a point; thence south 54° 54' east a distance of 140.0 feet to a point; thence south 35° 06' west a distance of 1.0 feet to a point; thence north 54° 54' west a distance of 700 feet to a point; thence south 35° 06' west a distance of 1.0 feet to a point; thence south 54° 54' east a distance of 700 feet to a point; thence south 35° 06' west a distance of 1.0 feet to a point; thence south 54° 54' east a distance of 3159 feet to a point on the south line of the NW 1/4, SE 1/4 of said Section 30; thence east along the south line of the north 1/2 of the SE 1/4 of said Section 30; a distance of 1510 feet to the northeast corner of the SE 1/4, SE 1/4 of said Section 30; thence south 00° 28' west along the east line of the SE 1/4, SE 1/4 of said Section 30 a distance of 1062.8 feet to a point; thence south 54° 54' east a distance of 443.96 feet to a point on the north line of the NW 1/4, NW 1/4 of said Section 32; thence north 89° 42' east along the north line of the NW 1/4, NW 1/4 of said Section 32 a distance of 954.69 feet to the northeast corner, NW 1/4, NW 1/4 of said Section 32; thence south 00° 18' west along the east line of the north 1/2 of the NW 1/4, NW 1/4 of said Section 32 a distance of 660 feet, more or less to the NE corner of the south 1/2 of the NW 1/4, NW 1/4 of said Section 32; thence south 55° 35' west a distance of 1604.9 feet to a point on the west line of the SW 1/4, NW 1/4 of said Section 32; thence south along the west line of the SW 1/4, NW 1/4 of said Section 32 a distance of 147.76 feet to a point; thence north 89° 38' 11" east a distance of 505.56 feet to a point; thence south 49° 13' 30" east a distance of 1128.07 feet to a point on the east line of the SW 1/4, NW 1/4 of said Section 32; thence south 00° 46' 18" west along the east line of the SW 1/4, NW 1/4 of said Section 32 a distance of 156.55 feet to the southeast corner of the SW 1/4, NW 1/4 of said Section 32; thence south 00° 12' 46" west along the east line of the NW 1/4, SW 1/4 a distance of 484.74 feet to a point; thence south 54° 48' 26" east a distance of 2011.36 feet to a point, said point being on the north right-of-way line of Interstate Highway 70; thence southeasterly along the north right-of-way line of Interstate Highway 70 the following 3 courses:

- 1) along a curve to the right having an initial tangent bearing of south 86° 55' 10" east and radius of 5855.0 feet a distance of 741.17 feet;
  - 2) South 83° 52' 30" east a distance of 340.9 feet;
  - 3) South 79° 40' 00" east a distance of 581.40 feet;
- thence south 25° 15' 35" west a distance of 452.59 feet to a point on the south right-of-way line of the United States Government Highline Canal, said point also being 851.46 feet west of the east line of the SE 1/4, SE 1/4 of said Section 32; thence south 00° 00' 00" west a distance of 364.67 feet to a point on the south line of the SE 1/4 of said Section 32; thence south 89° 54' 03" east along the south line of the SE 1/4 of said Section 32 a distance of 191.17 feet to a point; thence south 00° 01' 51" east a distance of 30.0 feet to the northeast corner of Lot 1 Hamlin Subdivision; thence south 00° 01' 51" east along the east line of Lots 1 and 2 of Hamlin Subdivision a distance of 1234.34 ft. to the southeast corner of Lot 2, Brookwood Subdivision; thence south 00° 01' 51" east a distance of 70.00 feet to a point on the north line of Lot 10, Block 1, Brookwood Subdivision; thence south 89° 28' 00" east along the north line of Lots 1 through 10, Block 1, Brookwood Subdivision a distance of 627.20 feet to the northeast corner of Lot 1, Block 1, Brookwood Subdivision; thence south 89° 28' 00" east a distance of 33.0 ft. to the northeast corner of the SE 1/4, NE 1/4 of said Section 5; thence south 00° 00' 03" west along the east line of the SE 1/4, NE 1/4 of said Section 5 a distance of 888.84 feet to a point; thence north 84° 32' 56" east a distance of 33.15 feet to the southeast corner of Lot 3, Block 6, Brookwood Subdivision; thence north 84° 32' 56" west along the south lot lines of Lots 3, 5, and 6, Block 6, Brookwood Subdivision, a distance of 293.84 feet to the southwest corner of Lot 6, Block 6, Brookwood Subdivision; thence north 84° 32' 56" west along the south lot line of Lot 2, Replat of Lots 7, 8, and 9, Block 6, Brookwood Subdivision, a distance of 64.00 feet to a point; thence north 75° 05' 49" west along the south lot line of Lot 2, replat of Lots 7, 8 and 9, Block 6, Brookwood Subdivision a distance of 61.94 feet to the southwest corner of said Lot 2; thence north 75° 05' 49" west along the south lot lines of Lots 10, 11 and 12, Block 6, Brookwood Subdivision, a distance of 134.95 feet to a point; thence north 76° 45' 07" west along the south lot lines of Lots 12 through 17, Block 6, Brookwood Subdivision, a distance of 364.69 feet to a point; thence north 45° 32' 26" west along the southwesterly lot lines of lots 17 through 19, Block 6 and lot 6, Block 5, Brookwood Subdivision, a distance of 273.06 feet to a point; thence north 55° 01' 42" west along the southwesterly lot lines of Lots 6, 5, 4 and 3, Block 5, Brookwood Subdivision a distance of 234.85 feet to a point on the west line of the SE 1/4, NE 1/4 of said Section 5; thence north 00° 02' 34" east along the west line of the SE 1/4, NE 1/4 of said Section 5; thence north 89° 40' 59" west along the north line of the SW 1/4, NE 1/4 of said Section 5 a distance of 1321.45 feet to the northwest corner of the SW 1/4, NE 1/4 of said Section 5; thence north 00° 00' 00" east along the east line of the SE 1/4, NE 1/4, NW 1/4 of said Section 5 a distance of 662.29 feet to the northeast corner of the SE 1/4, NE 1/4, NW 1/4 of said Section 5; thence north 89° 53' 07" west along the south line of the NE 1/4, NE 1/4, NW 1/4 of said Section 5 a distance of 659.68 feet to the southwest corner of the NE 1/4, NE 1/4, NW 1/4 of said Section 5; thence north 00° 00' 30" west along the west line of the NE 1/4, NE 1/4, NW 1/4 of said Section 5; thence north 89° 56' 50" west along the north line of the NW 1/4 of said Section 5 a distance of 989.67 feet to the northwest corner of the E 1/4, NW 1/4, NW 1/4 of said Section 5; thence south 00° 01' 01" east along the west line of the E 1/4, NW 1/4, NW 1/4 of said Section 5 a distance of 1321.03 ft. to a point on the south line of the NW 1/4, NW 1/4 of said Section 5; thence north 89° 49' 24" west along the south line of the NW 1/4, NW 1/4 a distance of 495.06 feet to a point; thence south 00° 00' 10" west a distance of 485.91 feet to a point; thence south 89° 54' 20" west a distance of 494.68 feet to a point on the west line of the SW 1/4, NW 1/4 of said Section 5; thence south 00° 01' 26" west along the west line of the SW 1/4, NW 1/4 a distance of 829.87 feet to the southwest corner of the NW 1/4 of said Section 5; thence north 89° 48' 35" west along the north right-of-way line of F 1/2 Road a distance of 657.57 feet to a point; thence south 00° 09' 02" west a distance of 106.00 feet to the northeast corner of Lot 7, Block 6 Darla Jean Subdivision;

thence south 58° 04' 25" west along the northwesterly lot lines of Lots 7 through 10, Block 6, Darla Jean Subdivision, a distance of 252.00 feet to a point; thence south 66° 27' 25" west along the northwesterly lot lines of lots 10 through 13, Block 6, Darla Jean Subdivision, a distance of 295.00 feet to a point; thence south 38° 25' 25" west along the northwesterly lot lines of lots 13 through 15, Block 6, Darla Jean Subdivision, a distance of 281.68 feet to a point; thence south 00° 12' 25" west along the western boundary of Darla Jean Subdivision a distance of 740.54 feet to the southwest corner of Darla Jean Subdivision; thence south 89° 49' 56" east along the south boundary of Darla Jean Subdivision a distance of 1317.73 feet to the southeast corner of the NE 1/4, SE 1/4 of said Section 6; thence south 00° 05' 40" west along the east line of the SE 1/4, SE 1/4 of said Section 6 a distance of 1320 feet to the southeast corner of said Section 6; thence south along the west line of the NW 1/4, NW 1/4 of said Section 8 a distance of 535 feet to a point; thence east 330 feet to a point; thence south 125 feet to a point on the south line of the NW 1/4, NW 1/4, NW 1/4 of said Section 8; thence east along the south line of the west 1/2, NE 1/4, NW 1/4, NW 1/4 of said Section 8 a distance of 330.03 feet to a point; thence south 330.0 feet to a point; thence east a distance of 20.0 feet to a point on the east right-of-way line of Kokopelli lane; thence south along said right-of-way line a distance of 231 feet to a point; thence east 200 feet to a point; thence south 99 feet to a point on the south line of the NW 1/4, NW 1/4 of said Section 8; thence east along the south line of the NW 1/4, NW 1/4 of said Section 8 a distance of 440 feet to the southeast corner of the NW 1/4, NW 1/4 of said Section 8, thence north 17° 59' 10" west a distance of 2.27 feet to the southwest corner of Lot 2, Block 3, Sroufe Subdivision; thence north 89° 57' 34" east along the south line of lots 2 and 1, Sroufe Subdivision a distance of 185.70 feet to the southwest corner of Lot 10, Block 2, New Beginnings Subdivision; thence north 89° 59' 11" east along the south line of lots 10 and 9 Block 2, New Beginnings Subdivision a distance of 211.19 feet to the southeast corner of said Lot 9; thence north 00° 02' 50" west along the east boundary of New Beginnings subdivision a distance of 1267.81 feet to the northeast corner of Lot 2, Block 1, New Beginnings Subdivision, said point being 50 feet south of the north line of the NW 1/4 of said Section 8; thence north 89° 59' 16" east parallel with the north line of the NW 1/4 of said Section 8 a distance of 759.63 feet to a point on the west line of Lot 1, Block 1, North Park Estates Subdivision; thence south 00° 05' east along the west line of Lots 1 and 2, Block 1, North Park Estates Subdivision, a distance of 167.87 feet to the southwest corner of Lot 2, Block 1, North Park Estates Subdivision; thence east along the south line of Lot 2, Block 1, North Park Estates Subdivision, a distance of 135.22 feet to the southeast corner of said Lot 2; thence north 00° 05' west along the east lines of lots 2 and 1, Block 1, North Park Estates Subdivision a distance of 167.87 feet to a point; thence east parallel with the north line of the NW 1/4 of said Section 8 a distance of 30.00 feet to a point on the east line of the NW 1/4 of said Section 8; thence east parallel with the north line of the NE 1/4 of said Section 8 a distance of 165.26 feet to the northwest corner of Lot 25, Greenfield Run Subdivision; thence east along the north line of Greenfield Run Subdivision a distance of 330.89 feet to a point; thence south 00° 01' 44" east along the east boundary line of Greenfield Run Subdivision a distance of 1267.79 feet to a point on the south line of the NW 1/4, NE 1/4 of said Section 8; thence south 89° 54' 09" east along the south line of the NW 1/4, NE 1/4 of said Section 8 a distance of 620.85 feet to the southwest corner of Lot 3, Block 1, Cody Subdivision; thence south 89° 58' 40" east along the south line of Lot 3, 2 and 1, Cody Subdivision, a distance of 205.38 feet to the southeast corner of Lot 1, Block 1, Cody Subdivision; thence North 00° 07' 21" west along the east boundary of Cody Subdivision a distance of 1318.70 feet to the northeast corner of the NW 1/4, NE 1/4 of said Section 8; thence North 00° 07' 21" west a distance of 50.0 feet to a point on the north right-of-way line of F Road; thence south 89° 57' 56" west parallel with the south line of the SW 1/4, SE 1/4 of said Section 5 a distance of 1326.63 feet to a point on the east line of the SE 1/4, SW 1/4 of said Section 5; thence west parallel with the south line of the east 1/2 of the SE 1/4, SW 1/4 of said Section 5 a distance of 660.32 feet to a point on the west line of the east 1/2 of SE 1/4, SW 1/4 of said Section 5; thence north along the west line of the east 1/2 of the SE 1/4, SW 1/4 of said Section 5 a distance of 1270 feet to the northwest corner of the east 1/2 of the SE 1/4 SW 1/4 of said Section 5; thence west along the north line of the west 1/2 of the SE 1/4, SW 1/4 of said Section 5 a distance of 535 feet to the northeast corner of Lot 10, Block 5, Cris-Mar Subdivision; thence South 00° 08' 22" east along the east lines of lots 10 through 14, Block 5 and Lot 12, Block 2, Cris-Mar Subdivision a distance of 659.83 feet to the southeast corner of Lot 12, Block 2, Cris-Mar Subdivision; thence south 89° 59' 10" east along the north line of lot 11, Block 2, Cris-Mar Subdivision a distance of 70.00 feet to the northeast corner of said Lot 11; thence south 00° 08' 22" east along the east lot lines of lots 11, 10, 9, 8 and 7, Block 2, Cris-Mar Subdivision a distance of 371.63 feet to a point; thence south parallel with the west line of the SE 1/4, SW 1/4 of said Section 5 a distance of 288 feet to a point on the south line of the SE 1/4, SW 1/4 of said Section 5; thence west along the south line of the SE 1/4, SW 1/4 of said Section 5 a distance of 34.3 feet to a point; thence south 00° 02' 46" east a distance of 50.0 feet to the northwest corner of New Beginnings Subdivision; thence south 00° 02' 46" east along the west boundary of New Beginnings Subdivision a distance of 1168.83 feet to a point on the north line of Lot 1, Block 3, Sroufe Subdivision; thence south 89° 57' 14" west along the north lot lines of Lots 1 and 2, Block 3, Sroufe Subdivision a distance of 180.70 feet to the northwest corner of Lot 2, Block 3, Sroufe Subdivision; thence north 00° 02' 48" west along the west boundary of Sroufe Subdivision a distance of 560.0 feet to the southwest corner of Lot 7, Block 1, Sroufe Subdivision; thence south 89° 57' 41" west along the south boundary of Redwing Subdivision a distance of 330.96 feet to the southwest corner of Lot 8, Redwing Subdivision; thence north 00° 03' 00" west along the west boundary of Redwing Subdivision a distance of 609.33 feet to the northwest corner of Lot 1, Redwing Subdivision, said point being 50 ft. south of the north line of the NW 1/4, NW 1/4 of said Section 8; thence west parallel with and 50 feet south of the north line of the NW 1/4, NW 1/4 of said Section 8 a distance of 660.14 feet to a point; thence north 50 feet to a point on the north line of the NW 1/4, NW 1/4 of said Section 8; thence north 00° 06' 46" west a distance of 50.0 feet to the southeast corner of Lot 3, Plaza "29" Subdivision; thence north 00° 06' 46" west along the east lot lines of lots 3, 4 and 6, Plaza "29" Subdivision a distance of 214.0 feet to a point; thence south 89° 59' 59" east a distance of 330.0 feet to a point; thence north 00° 06' 46" west a distance of 164.91 feet to a point; thence north 89° 59' 28" east a distance of 658.47 feet to a point, 2 feet east

of the west line of the SW 1/4, SW 1/4 of said Section 5; thence north 00° 05' 21" west parallel with the west line of the SW 1/4, SW 1/4 of said Section 5 a distance of 231.00 feet to a point; thence east a distance of 28.0 feet to the southwest corner of Lot 1, Block 3, Morning Glory Subdivision; thence north along the west lot lines of Lot 1, Block 3 and Lot 1, Block 4, Morning Glory Subdivision a distance of 330.0 feet to the northwest corner of Lot 1, Block 4, Morning Glory Subdivision; thence south 89° 48' 24" east a distance of 10.0 feet to the southwest corner of Lot 16, Karen Lee Subdivision First Addition; thence north 00° 05' 40" east along the west lot lines of Lots 16 and 1, Karen Lee Subdivision First Addition a distance of 330.01 feet to the northwest corner of Lot 1, Karen Lee Subdivision First Addition; thence north 89° 48' 24" west a distance of 40.0 feet to the northwest corner of the SW 1/4, SW 1/4 of said Section 5; thence north 00° 05' 40" east along the west line of the NW 1/4, SW 1/4 of said Section 5 a distance of 1320 feet to the northwest corner of the SW 1/4 of said Section 5; thence east along the south line of the SW 1/4, NW 1/4 of said Section 5 a distance of 285 feet to a point; thence north 39.0 feet to a point, thence east 210 feet to a point; thence north 55.5 feet to a point on the south line of the Palisade Canal; thence along said canal line the following 19 courses and distances:

- 1) South 74° 35' 29" east a distance of 144.58 feet;
  - 2) North 50° 34' 19" east a distance of 30.35 feet;
  - 3) North 32° 27' 54" east a distance of 64.25 feet;
  - 4) North 48° 46' 11" east a distance of 45.88 feet;
  - 5) North 60° 05' 20" east a distance of 49.77 feet;
  - 6) North 71° 13' 13" east a distance of 41.98 feet;
  - 7) North 75° 39' 10" east a distance of 5.98 feet;
  - 8) North 75° 39' 10" east a distance of 163.09 feet;
  - 9) South 77° 27' 59" east a distance of 354.96 feet;
  - 10) North 67° 38' east a distance of 185 feet;
  - 11) North 49° east a distance of 122 feet;
  - 12) North 58° 04' east a distance of 325 feet;
  - 13) South 65° 17' east a distance of 159 feet;
  - 14) North 80° 27' east a distance of 47 feet;
  - 15) North 64° 07' 03" east a distance of 416.55 feet;
  - 16) South 87° 00' 34" east a distance of 54.95 feet;
  - 17) South 60° 19' 47" east a distance of 73.57 feet;
  - 18) South 72° 43' 44" east a distance of 63.96 feet;
  - 19) North 87° 34' 10" east a distance of 40.21 feet
- to a point on the east line of the SE 1/4, NW 1/4 of said Section 5; thence south along the east line of the SE 1/4, NW 1/4 of said Section 5; a distance of 122.86 feet to a point; thence east 826.67 feet to a point; thence south 45° 07' west a distance of 163.78 feet to a point; thence north 89° 40' 12" west a distance of 49.66 feet to a point on the east line of the west 1/2 of the SW 1/4, NE 1/4 of said Section 5; thence south 00° 01' 08" east a distance of 655.93 feet to the southwest corner of the SE 1/4, SW 1/4, NE 1/4 of said Section 5; thence south 89° 42' 54" east along the south line of the SE 1/4, SW 1/4, NE 1/4 of said Section 5 a distance of 661.16 feet to the southwest corner of the SE 1/4, NE 1/4 of said Section 5; thence south 86° 42' 54" east along the south line of the SE 1/4, NE 1/4 of said Section 5 a distance of 1322.32 feet to the southeast corner of the NE 1/4 of said Section 5; thence east along the south line of the SW 1/4, SW 1/4, NW 1/4 of said Section 4 a distance of 660.10 feet to the southeast corner of the SW 1/4, SW 1/4, NW 1/4 of said Section 4, thence north along the east line of the west 1/2 of the SE 1/4, NW 1/4 of said Section 4 a distance of 1312.42 feet to the northeast corner of the NW 1/4, SW 1/4, NW 1/4 of said Section 4; thence west along the north line of the NW 1/4, SW 1/4, NW 1/4 of said Section 4 a distance of 407.30 feet to a point; thence north 00° 00' 48" west along the east line of Lot 8, Block 3, Palmyra Subdivision, a distance of 335.28 feet to the northeast corner of Lot 8, Block 3, Palmyra Subdivision; thence north 89° 50' 28" west along the north line of Lot 8, Block 3, Palmyra Subdivision a distance of 219.95 feet to the northwest corner of said Lot 8; thence north 89° 50' 28" west a distance of 33.0 feet to the west line of the NW 1/4, NW 1/4 of said Section 4; thence north along the west line of the NW 1/4, NW 1/4 of said Section 4 a distance of 977.61 feet to the northwest corner of said Section 4; thence north along the east line of the SE 1/4, SE 1/4 of said Section 32 a distance of 500.0 feet to a point; thence west parallel with the south line of the SE 1/4, SE 1/4 of said Section 32 a distance of 20 feet to a point; thence north parallel with the east line of the SE 1/4, SE 1/4 of said Section 32 a distance of 800 feet to a point; said point being 20 feet south and 20 feet west of the northeast corner of the SE 1/4, SE 1/4 of said Section 32; thence west parallel with the north line of the SE 1/4, SE 1/4 of said Section 32 a distance of 1300 feet to a point on the west line of the SE 1/4, SE 1/4 of said section 32; thence west parallel with the north line of the SW 1/4, SE 1/4 of said Section 32 a distance of 20 feet; thence north parallel with the west line of the SE 1/4, SE 1/4 of said Section 32 a distance of 20 feet; thence north parallel with the east line of the NW 1/4, SE 1/4 of said Section 32 a distance of 1320 feet to a point on the north line of the NW 1/4, SE 1/4 of said Section 32; thence west along the north lines of the NW 1/4, SE 1/4 and NE 1/4, SW 1/4 of said Section 32 a distance of 2600 feet to a point, said point being 20 feet east of the southwest corner of the SE 1/4, NW 1/4 of said Section 32; thence north parallel with the west line of the SE 1/4, NW 1/4 of said Section 32 a distance of 1320 feet to a point on the north line of the SE 1/4, NW 1/4 of said Section 32; thence north parallel with the west line of the SE 1/4, SE 1/4 of said Section 29 a distance of 20 feet to a point on the west line of the SE 1/4, SW 1/4 of said Section 29; thence north along the west line of the SE 1/4, SW 1/4 of said Section 29 a distance of 1300 feet to the northwest corner of the SE 1/4, SW 1/4 of said Section 29; thence west along the north line of the SW 1/4, SW 1/4 a distance of 1300 feet to a point; thence north parallel with the west line of the NW 1/4, SW 1/4 of said Section 29 a distance of 20 feet to a point; thence west parallel with the south line of the NW 1/4, SW 1/4 of said Section 29 a distance of 20 feet to a point on the west line of the NW 1/4, SW 1/4 of said Section 29; thence west parallel with the south line of the NE 1/4, SE 1/4 of said Section 30 a distance of 1320 feet to a point on the west line of the NE 1/4, SE 1/4 of said Section 30; thence north along the west line of the NE 1/4, SE 1/4 of said Section 30 a distance of 1280 feet to a point, said point being 20 feet south of the northwest corner of the NE 1/4, SE 1/4 of said Section 30; thence west parallel with the north line of the NW 1/4, SE 1/4 of said Section 30; thence west parallel with the north line of the NW 1/4, SE 1/4 a distance of 1320 feet to a point on the west line of the NW 1/4, SE 1/4 of said Section 30; thence west parallel with the north line of the NE 1/4, SE 1/4 of said Section 30; thence west parallel with the north line of the NE 1/4, SE 1/4 of said Section 30 a distance of 20 feet to a point; thence north 62° 54' 45" west a distance of 2942.79 feet to the point of beginning.

REVISION	DESCRIPTION	DATE	DRAWN BY	M.A.P.	DATE	8/19/94	CHECKED BY	J.L.S.	DATE	9/30/94	APPROVED BY	J.L.S.	DATE	10/4/94	FIELD BOOK NO.	PAGE
REVISION	△															
REVISION	△															
REVISION	△															
REVISION	△															

PLAN	PROFILE
HORIZ.	HORIZ.
	VERT.

DEPARTMENT OF PUBLIC WORKS AND UTILITIES  
ENGINEERING DIVISION  
CITY OF GRAND JUNCTION, COLORADO

DARLA JEAN  
ANNEXATION # 2

SHEET NO.	2
OF	3
FILE NO.	DARLEG.DWG

