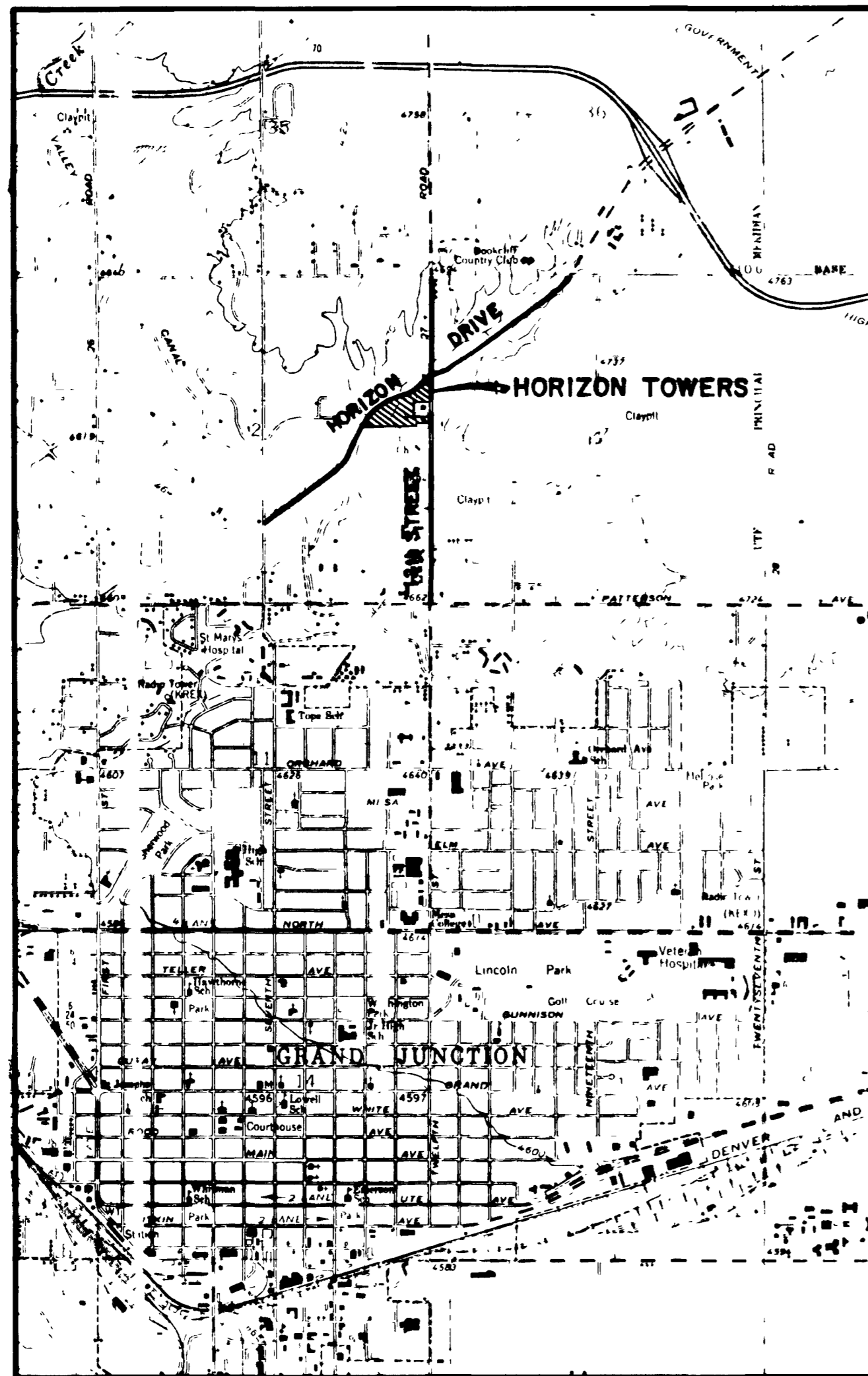


A CONDOMINIUM MAP FOR:


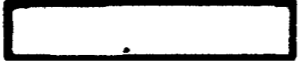



# HORIZON TOWERS

CITY OF GRAND JUNCTION, COLORADO



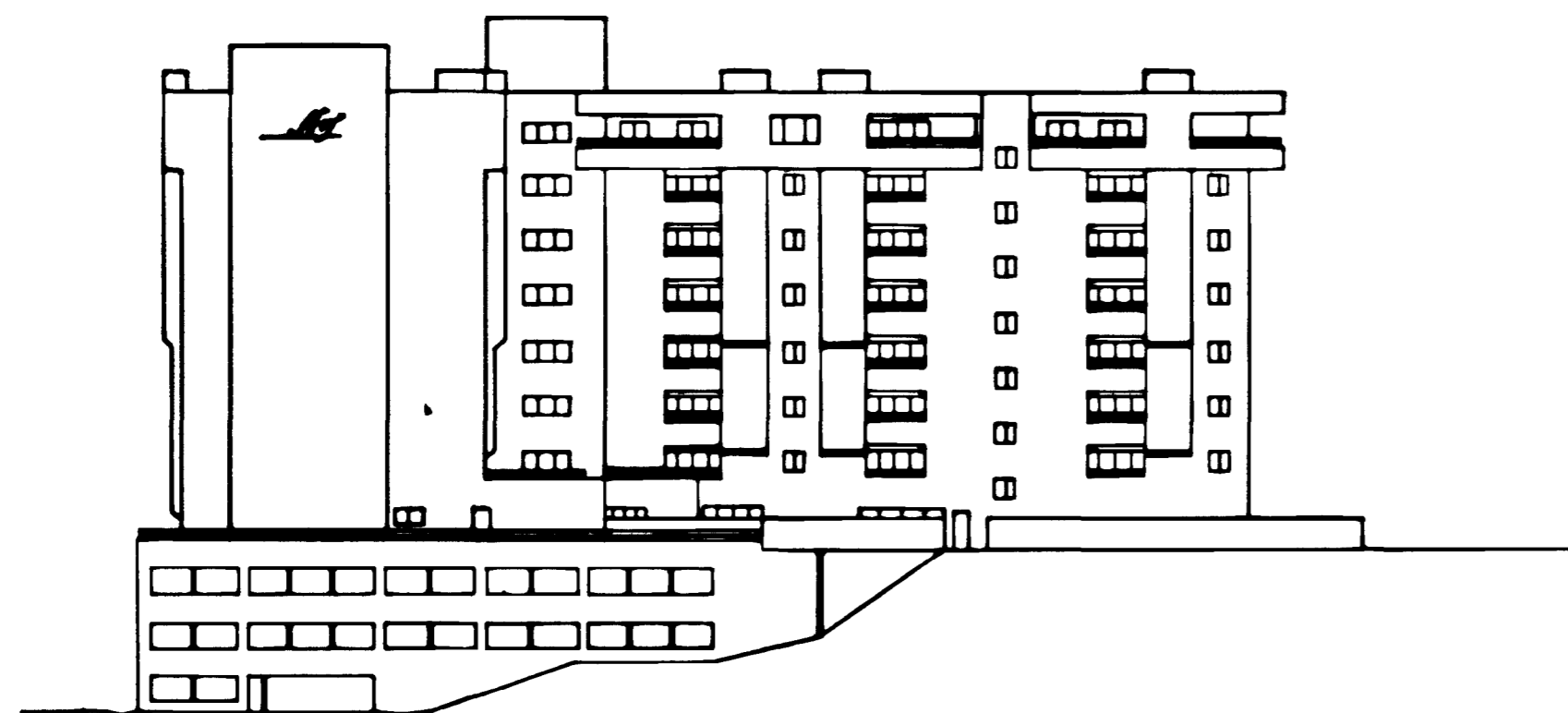
LOCATION MAP

## LEGEND

- G.C.E. . . . . GENERAL COMMON ELEMENT
- L.C.E. . . . . LIMITED COMMON ELEMENT
- R.C.E. . . . . RESTRICTED COMMON ELEMENT
-  . . . . . GENERAL COMMON ELEMENT
-  . . . . . LIMITED COMMON ELEMENT
-  . . . . . RESTRICTED COMMON ELEMENT
-  . . . . . DESIGNATED UNIT NUMBER
-  . . . . . LOAD BEARING WALL - G.C.E.

## INDEX

DESCRIPTION	PAGE
COVER SHEET . . . . .	1
SITE PLAN . . . . .	2
1st FLOOR - PLAN . . . . .	3
2nd thru 7th FLOOR - PLAN . . . . .	4
8th FLOOR - PLAN . . . . .	5
PARKING LEVEL 1 - PLAN . . . . .	6
PARKING LEVEL 2 - PLAN . . . . .	7
PARKING LEVEL 3 - PLAN . . . . .	8
WEST ELEVATION . . . . .	9
EAST ELEVATION . . . . .	10
SOUTH ELEVATION . . . . .	11
NORTH ELEVATION . . . . .	12



Prepared By:

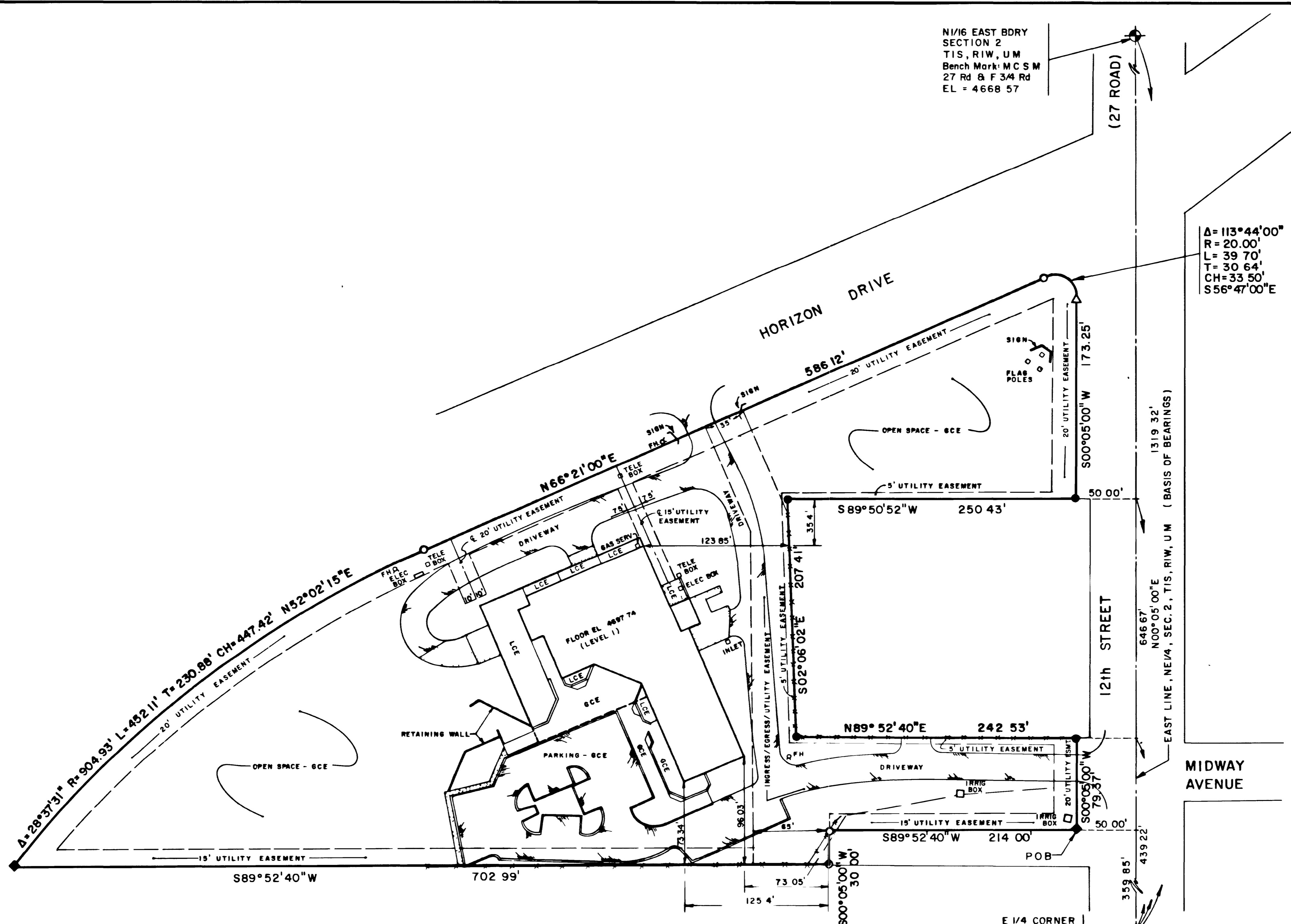


ROLLAND ENGINEERING  
 518 28 ROAD, SUITE B 103  
 GRAND JUNCTION, COLORADO 81501  
 303-243-8300

N1/16 EAST BDRY  
SECTION 2  
T1S, R1W, U M  
Bench Mark: M C S M  
27 Rd & F 3/4 Rd  
EL = 4668 57

LEGAL DESCRIPTION  
Horizon Towers Amended, as recorded in Plat Book 14, Page 2,  
of the Mesa County Clerk and Recorder,

Δ = 113°44'00"  
R = 20.00'  
L = 39.70'  
T = 30.64'  
CH = 33.50'  
S56°47'00"E



**OWNERS CERTIFICATE**

John A. Branagh and Lynette F. Branagh, and Gaylon C. Patterson and Marla J. Patterson, the owners of HORIZON TOWERS AMENDED certify that this Condominium Map of HORIZON TOWERS has been prepared pursuant to the purposes stated in the Declaration of Covenants, Conditions and Restrictions for HORIZON TOWERS CONDOMINIUMS, dated April 3 A D, 1992, recorded coincident with the filing of this Map in the records of Mesa County, State of Colorado

*John A. Branagh*  
John A. Branagh  
*Lynette F. Branagh*  
Lynette F. Branagh  
*Gaylon C. Patterson*  
Gaylon C. Patterson  
*Marla J. Patterson*  
Marla J. Patterson

UNITED BANK OF GRAND JUNCTION, DOWNTOWN, Radified and approved as Lien Holders only  
STATE OF COLORADO }  
COUNTY OF MESA }

The foregoing instrument was acknowledged before me this 16th day of March A D 1992 by John A. Branagh

My commission expires 2-4-94  
Witness my hand and official seal

*Danny L. Gonderston*  
DANNY L. GONDERSTON  
Notary Public  
STATE OF COLORADO }  
COUNTY OF MESA }

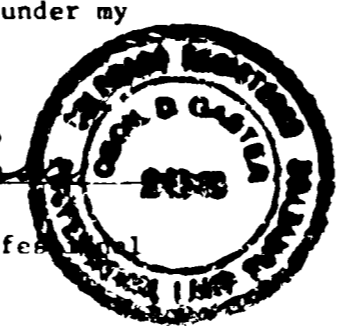
I hereby certify that this instrument was filed in my office at 10:10 o'clock A. M. this 8th day of April A D 1992 and is duly recorded as Reception Number 1598444 in CONDOMINIUM NO W66 Bk 4 thru 15 inclusive  
*Monika Todd* Clerk and Recorder  
*Whitney Howard* Deputy  
Fees \$ 120.00

- LEGEND**
- ◆ MESA COUNTY SURVEY MONUMENT
  - ▲ FOUND 5/8" REBAR, NO CAP
  - FOUND ALUMINUM CAP "WESTERN ENG LS 18469"
  - ◆ FOUND 5/8" REBAR & CAP "ARMSTRONG ENG LS 9175"
  - ⊙ FOUND PK NAIL WITH BRASS TAG
  - SET 5/8" REBAR WITH CAP "ROLLAND ENG LS 24943" IN CONCRETE
  - CURB
  - ▭ CONCRETE
  - ▨ ASPHALT
  - FENCE
  - - - DITCH

**SURVYORS CERTIFICATE**

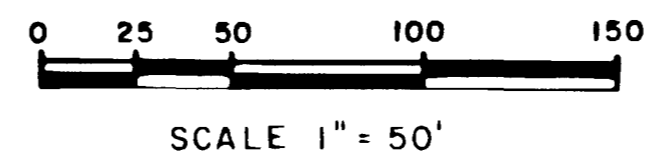
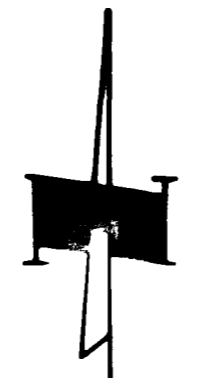
I, Cecil D. Gaster, a Registered Professional Land Surveyor in the State of Colorado, do hereby certify that the accompanying condominium map of the said parcel of land and buildings, was prepared under my direct supervision

4-1-92  
*Cecil D. Gaster*  
Cecil D. Gaster  
Colorado Registered Professional Land Surveyor  
PLS No 24943



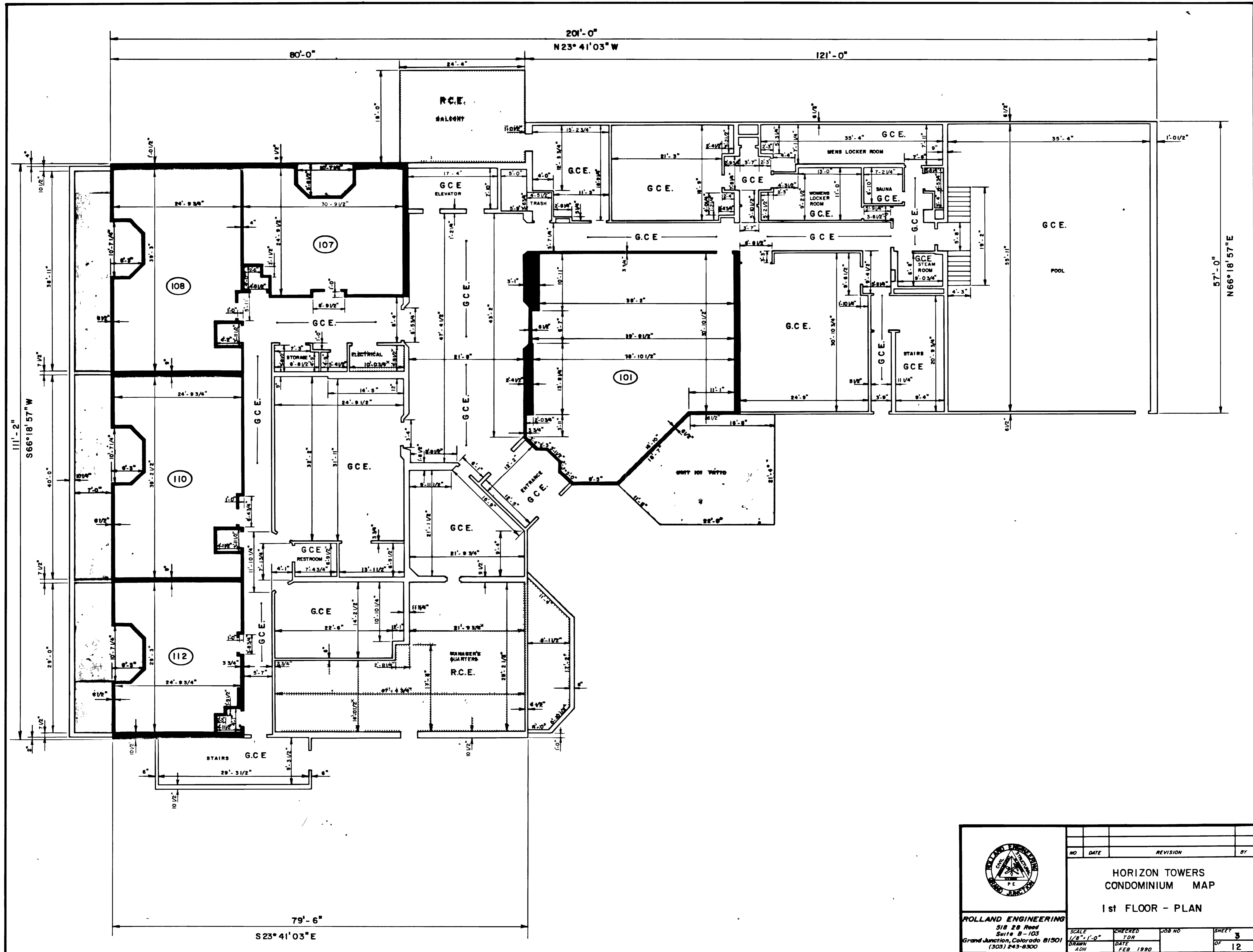
STATE OF CALIFORNIA )  
COUNTY OF ALAMEDA )  
On March 17, 1992, before me, the undersigned, a Notary Public in and for said State, personally appeared Lynette F. Branagh, Gaylon C. Patterson, and Marla J. Patterson, known to me, and acknowledged to me that they executed the within


WITNESS my hand and official seal  
My commission expires March 23, 1992  
*Kristie G. Collet*  
OFFICIAL NOTARY SEAL  
KRISTIE G. COLLET  
Notary Public - California  
CONTRA COSTA COUNTY  
My Comm. Expires MAR 27 1992  
Notary Public

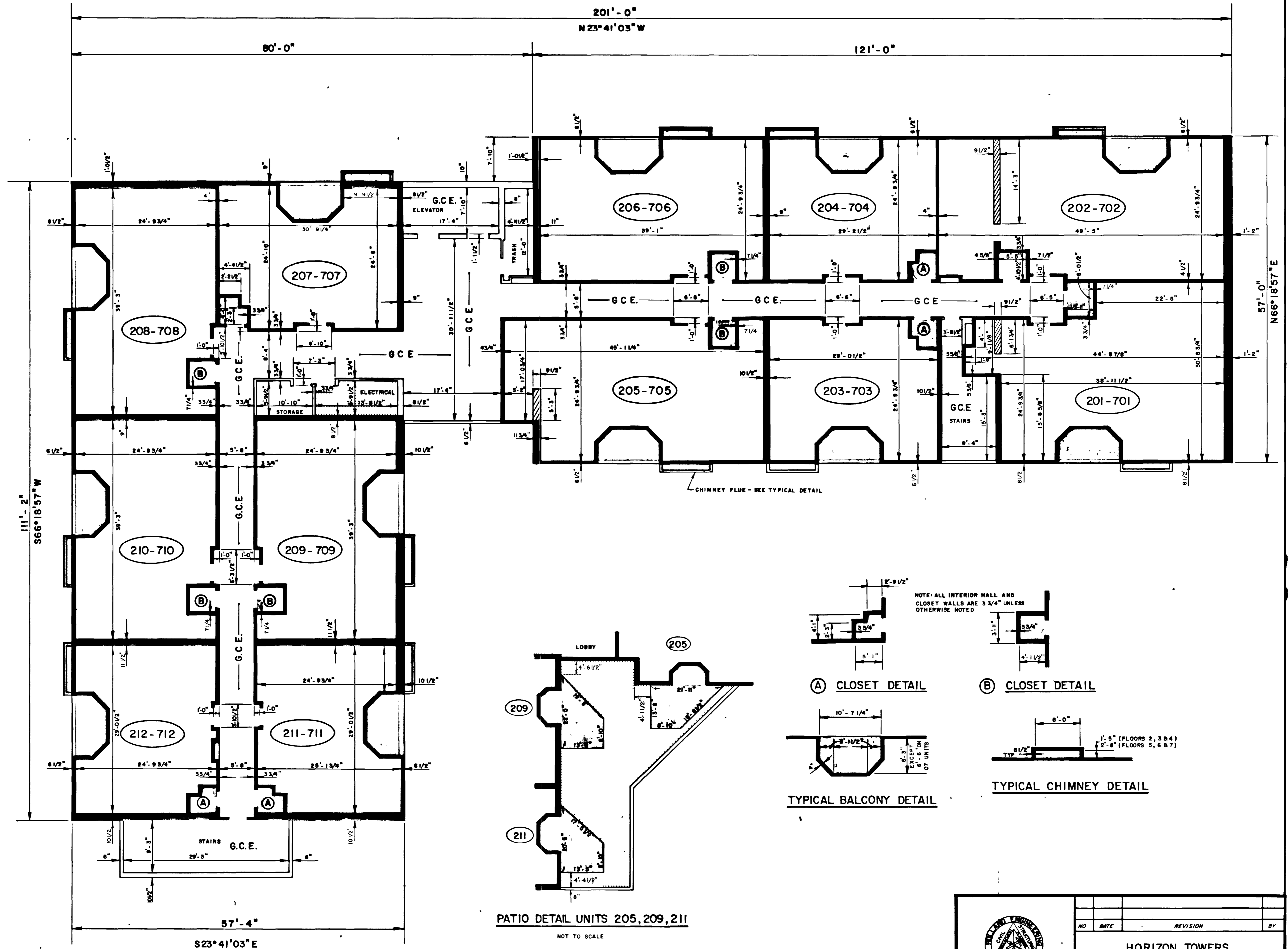


	NO. DATE REVISION BY		
	HORIZON TOWERS CONDOMINIUM MAP		
SITE PLAN			
<b>ROLLAND ENGINEERING</b> 518 28 Road Suite B-103 Grand Junction, Colorado 81501 (303) 243-8300	SURVEYED C.D.G. DRAWN ADH	CHECKED T.D.R. DATE FEB, 1990	JOB NO. SHEET 2 OF 12

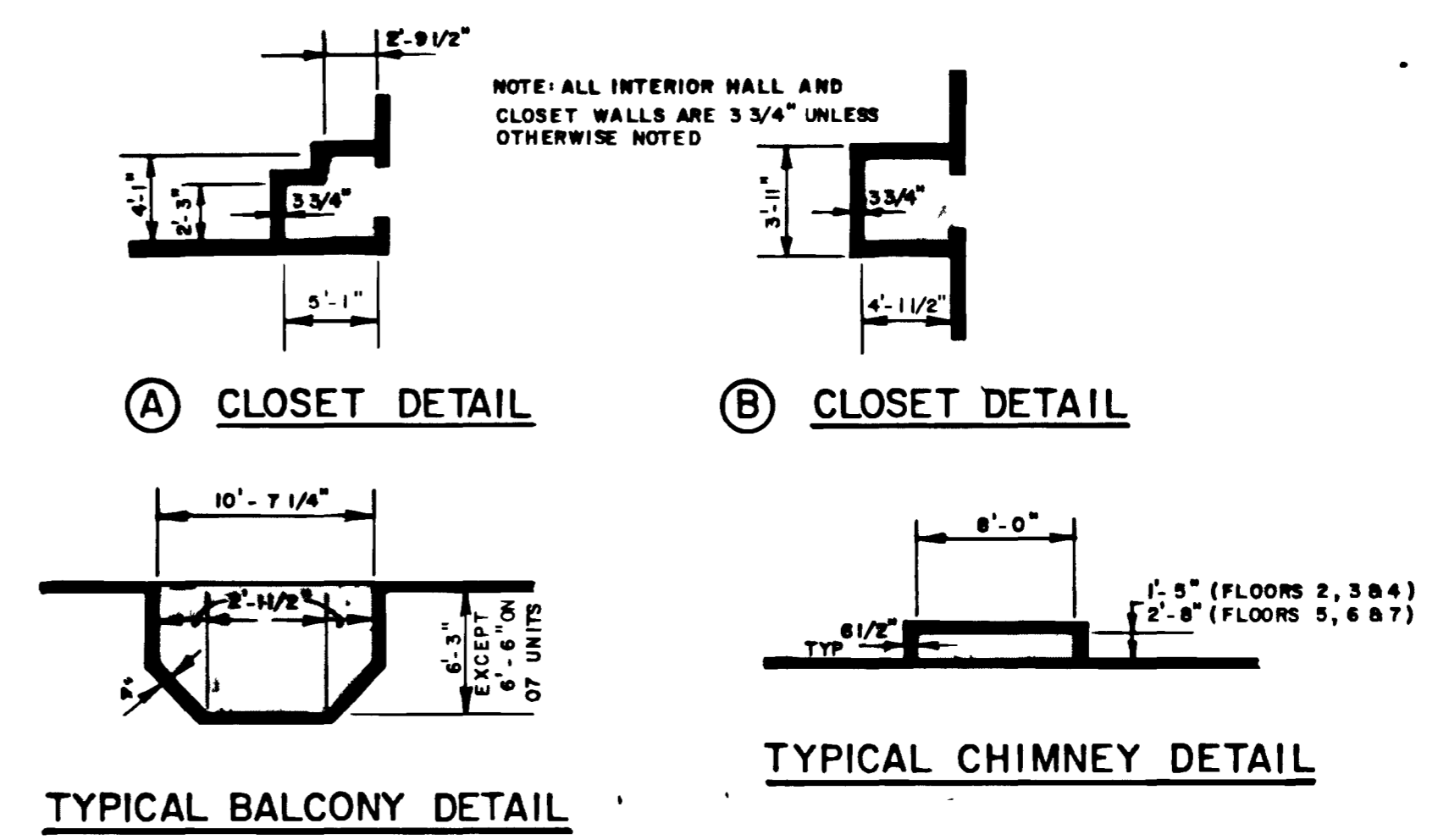
Sec 2, T1S R1W SE4 SE4 NE4




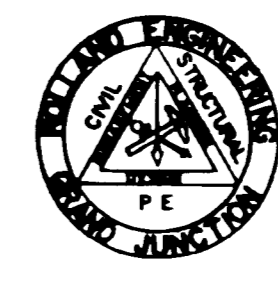
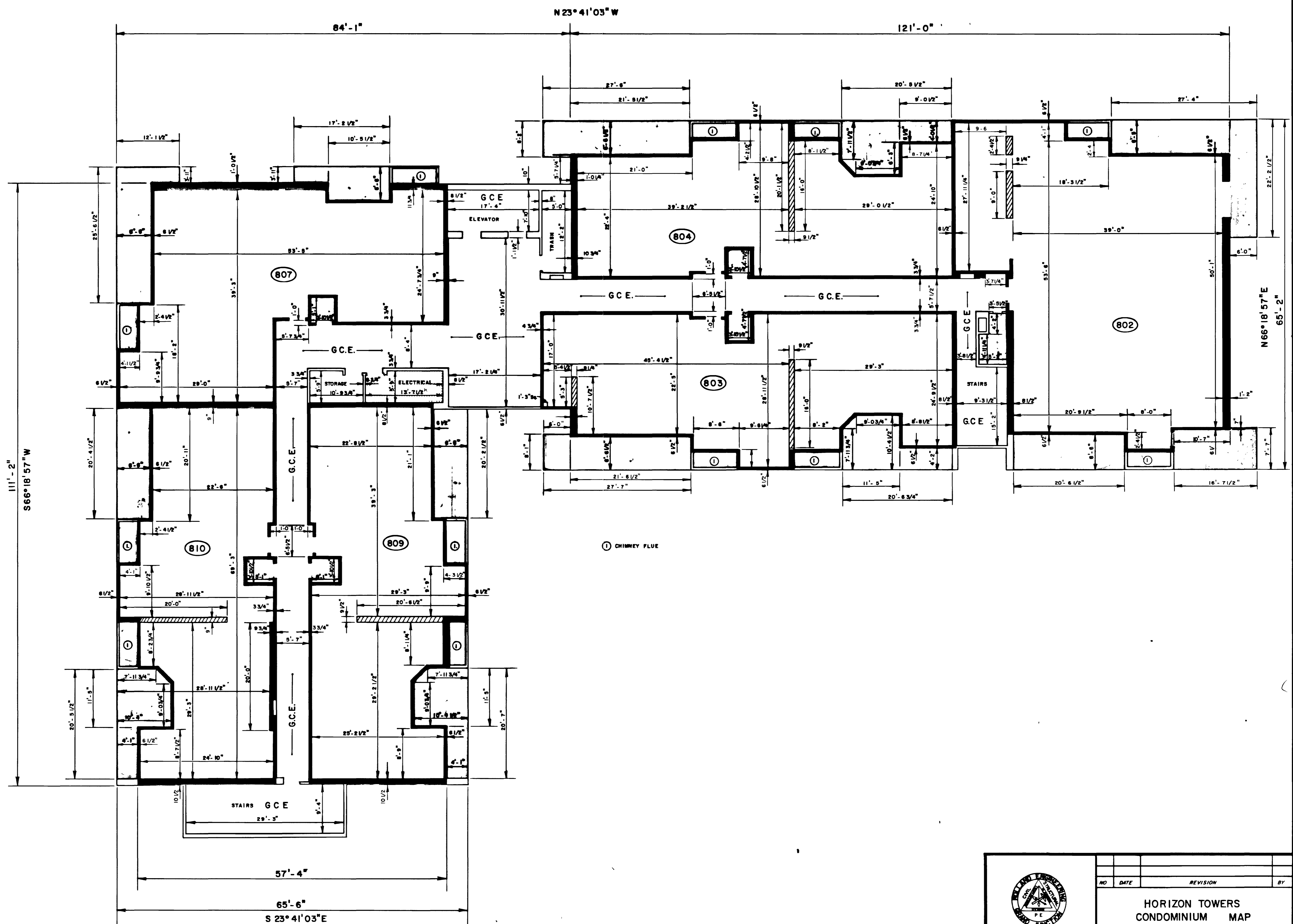
	NO DATE REVISION BY		
	HORIZON TOWERS CONDOMINIUM MAP 1st FLOOR - PLAN		
ROLLAND ENGINEERING 518 28 Road Suite B-103 Grand Junction, Colorado 81501 (303) 243-8300	SCALE 1/8" = 1'-0" DRAWN ADH	CHECKED TDR DATE FEB 1990	JOB NO  SHEET 3 OF 12



PATIO DETAIL UNITS 205, 209, 211  
NOT TO SCALE



 <b>ROLLAND ENGINEERING</b> 518 28 Road Suite B-103 Grand Junction, Colorado 81501 (303) 243-8300	NO	DATE	REVISION	BY
	<b>HORIZON TOWERS          CONDOMINIUM MAP</b> 2nd Thru 7th FLOOR - PLAN			
SCALE 1/8" = 1'-0"	CHECKED T.D.R.	JOB NO.	SHEET 4	
DRAWN A.D.H.	DATE FEB 1990		OF 12	



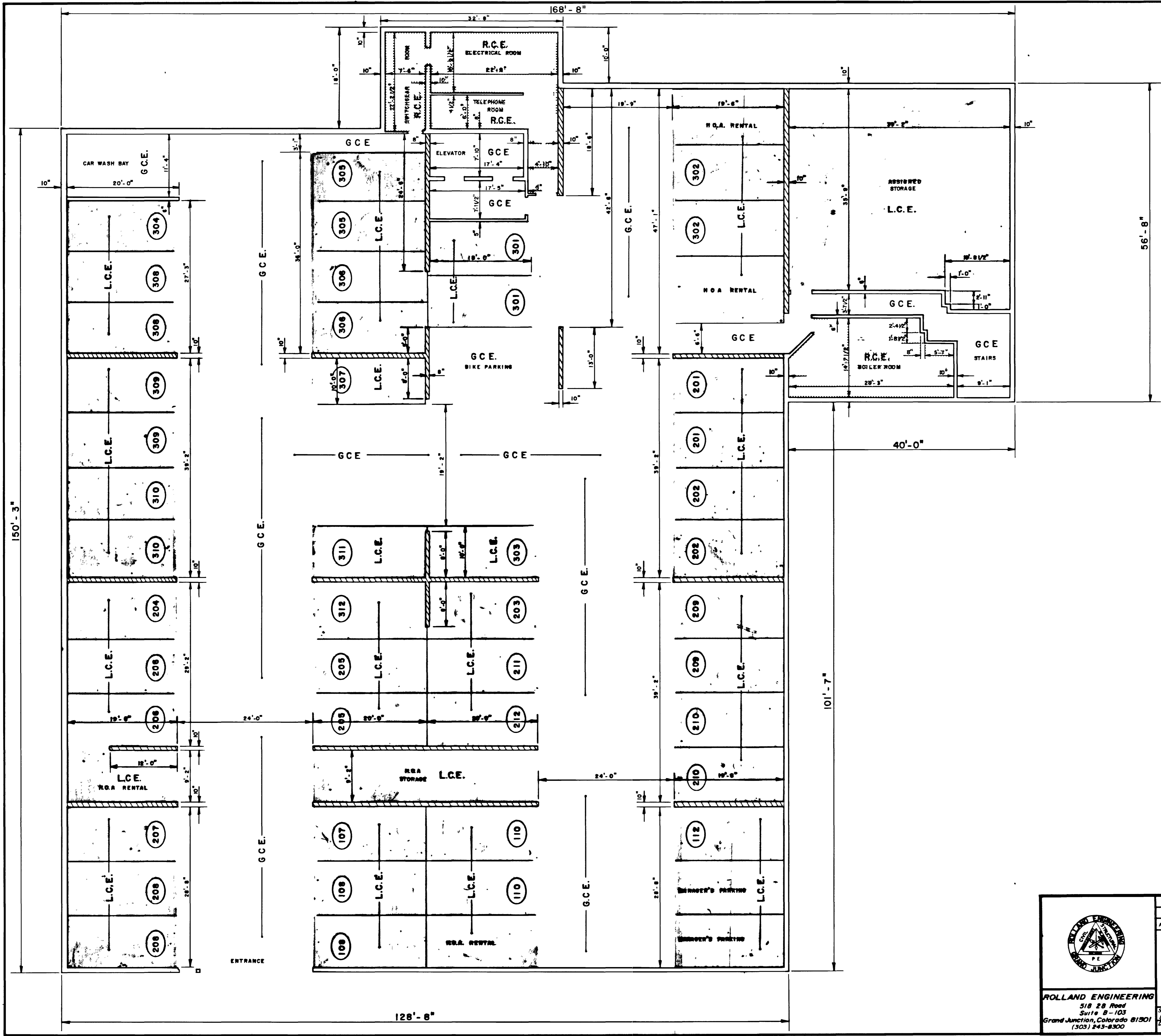
**ROLLAND ENGINEERING**  
 518 28 Road  
 Suite B-103  
 Grand Junction, Colorado 81501  
 (303) 243-8300


NO	DATE	REVISION	BY

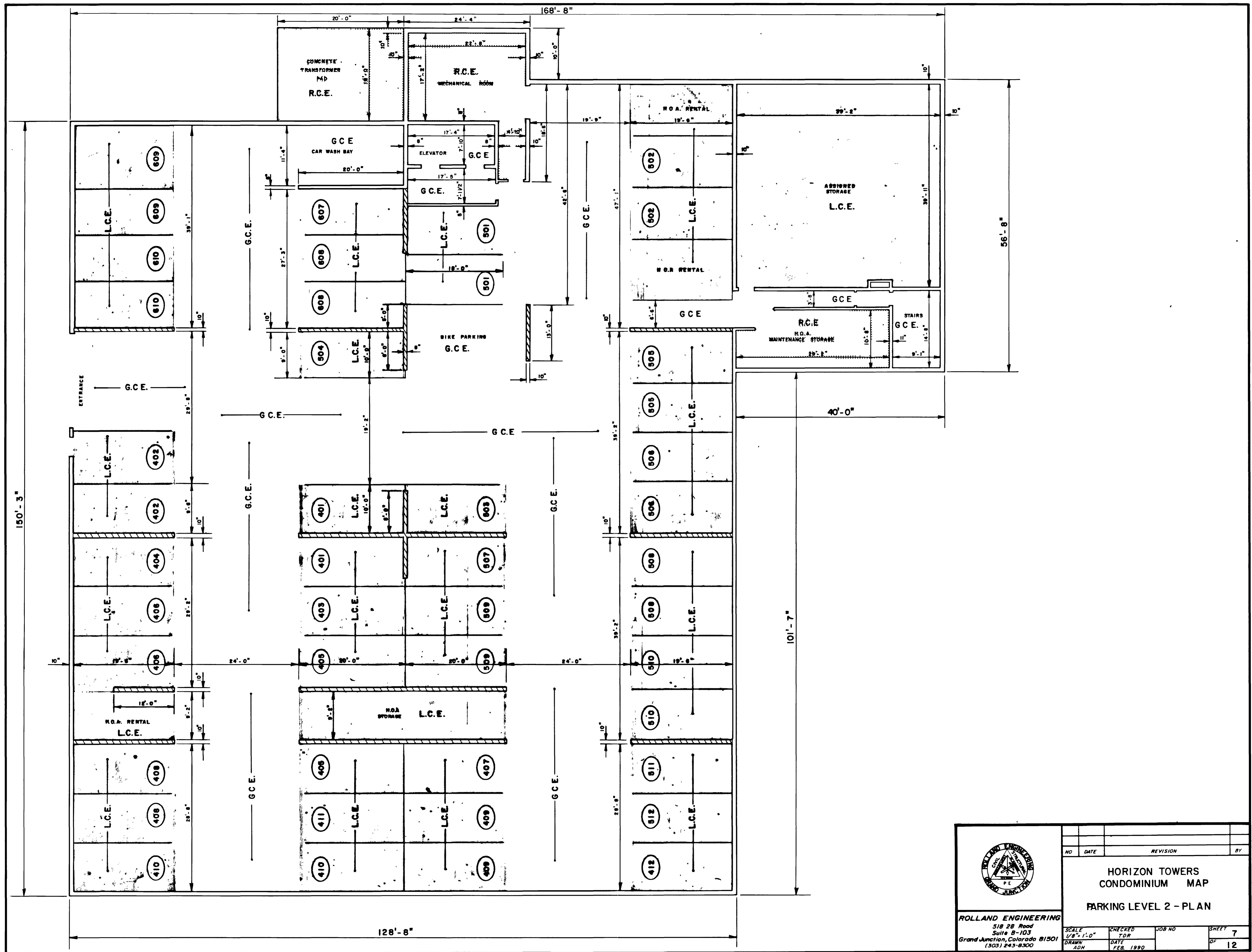
**HORIZON TOWERS  
 CONDOMINIUM MAP**


**8th FLOOR - PLAN**

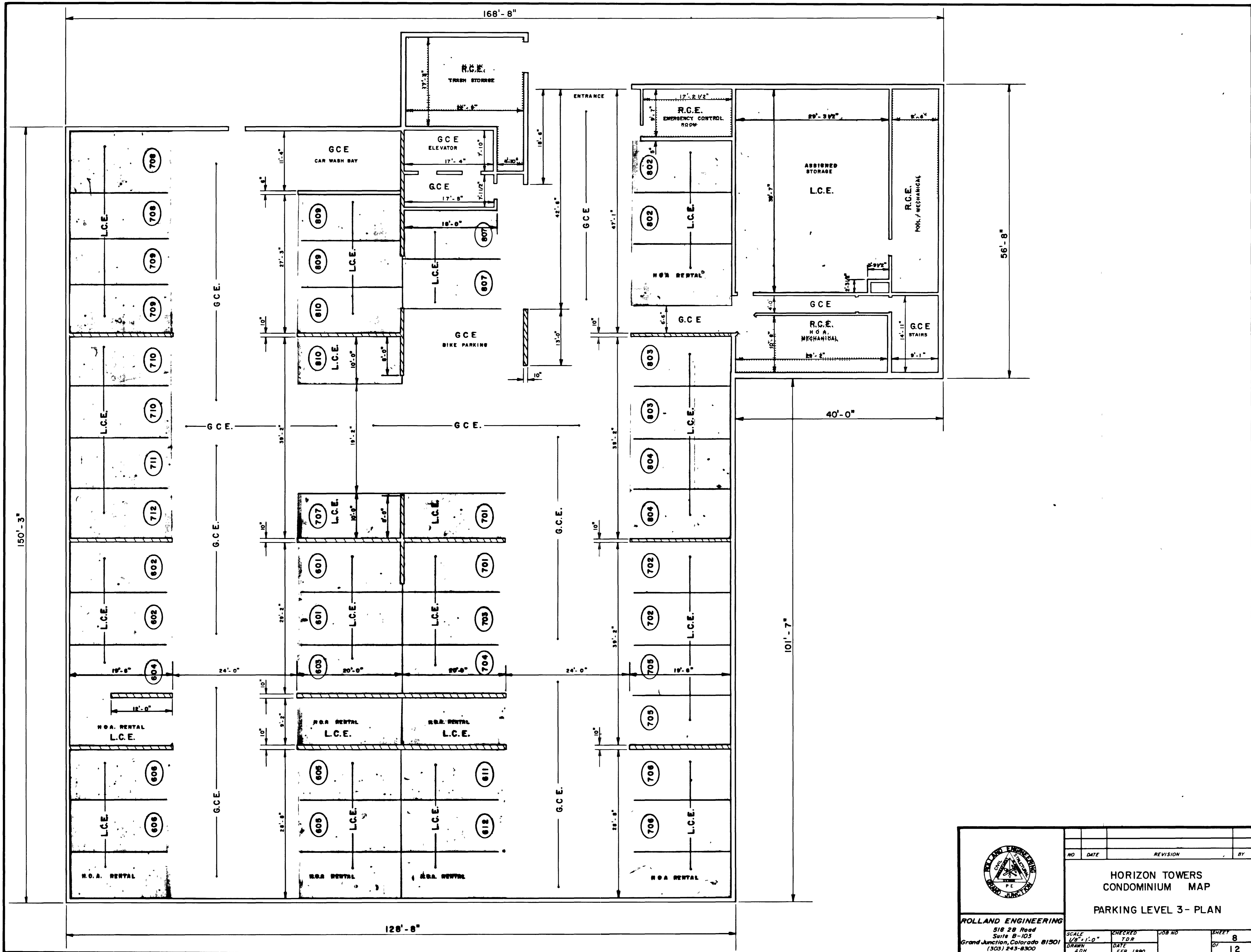
SCALE 1/8" = 1'-0"	CHECKED TDR	JOB NO	SHEET 5
DRAWN A.G.H.	DATE FEB 1990		OF 12




 <b>ROLLAND ENGINEERING</b> 518 28 Road Suite B-103 Grand Junction, Colorado 81501 (303) 243-8300	NO	DATE	REVISION	BY
	<b>HORIZON TOWERS          CONDOMINIUM MAP          PARKING LEVEL I - PLAN</b>			
SCALE 1/2" = 1'-0"	CHECKED TDR	JOB NO.	SHEET 6	
DRAWN ADN	DATE FEB 1990	OF 12		

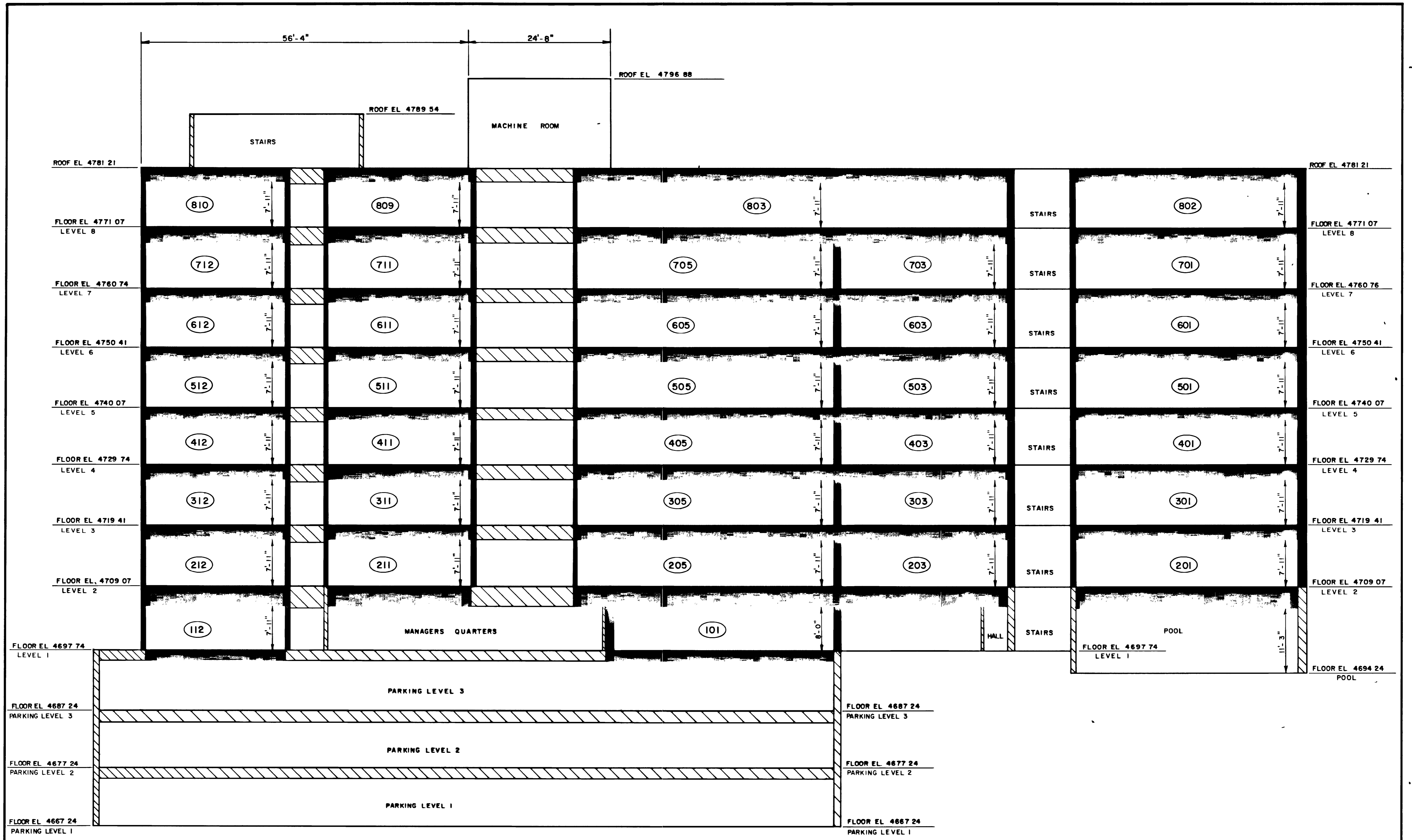


 <b>ROLLAND ENGINEERING</b> 518 28 Road Suite B-103 Grand Junction, Colorado 81501 (303) 243-8300	NO	DATE	REVISION	BY
	<b>HORIZON TOWERS          CONDOMINIUM MAP          PARKING LEVEL 2 - PLAN</b>			
SCALE 1/8" = 1'-0"	CHECKED TOR	JOB NO	SHEET 7	
DRAWN AGH	DATE FEB. 1990		OF 12	

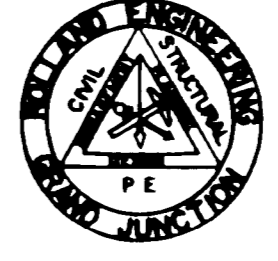


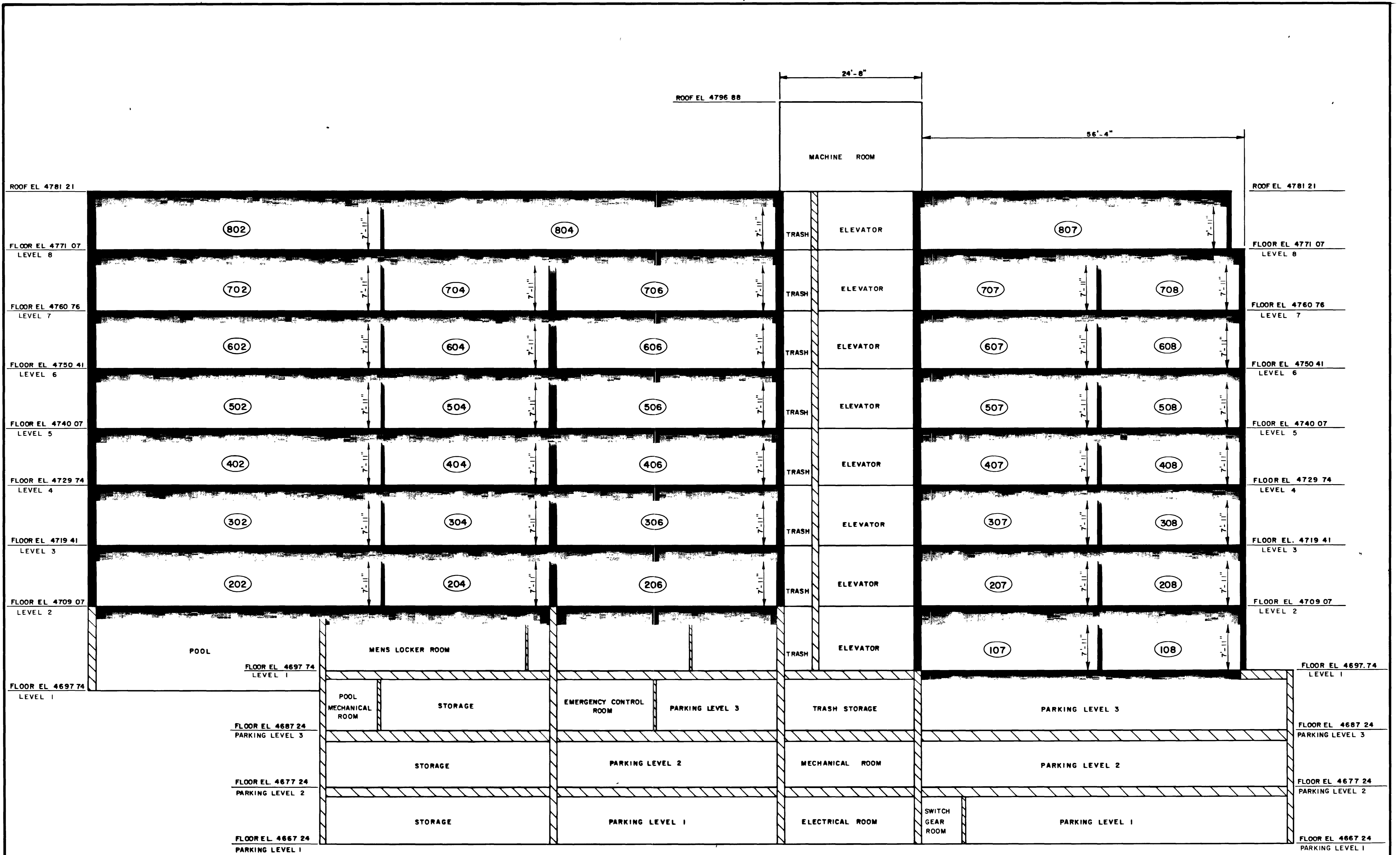
 <p><b>ROLLAND ENGINEERING</b> 518 28 Road Suite B-103 Grand Junction, Colorado 81501 (303) 243-8300</p>	NO. DATE		REVISION	BY
	<b>HORIZON TOWERS CONDOMINIUM MAP PARKING LEVEL 3- PLAN</b>			
SCALE 1/8" = 1'-0"	CHECKED TDR	JOB NO.	SHEET 8	
DRAWN ADH	DATE FEB 1990		OF 12	





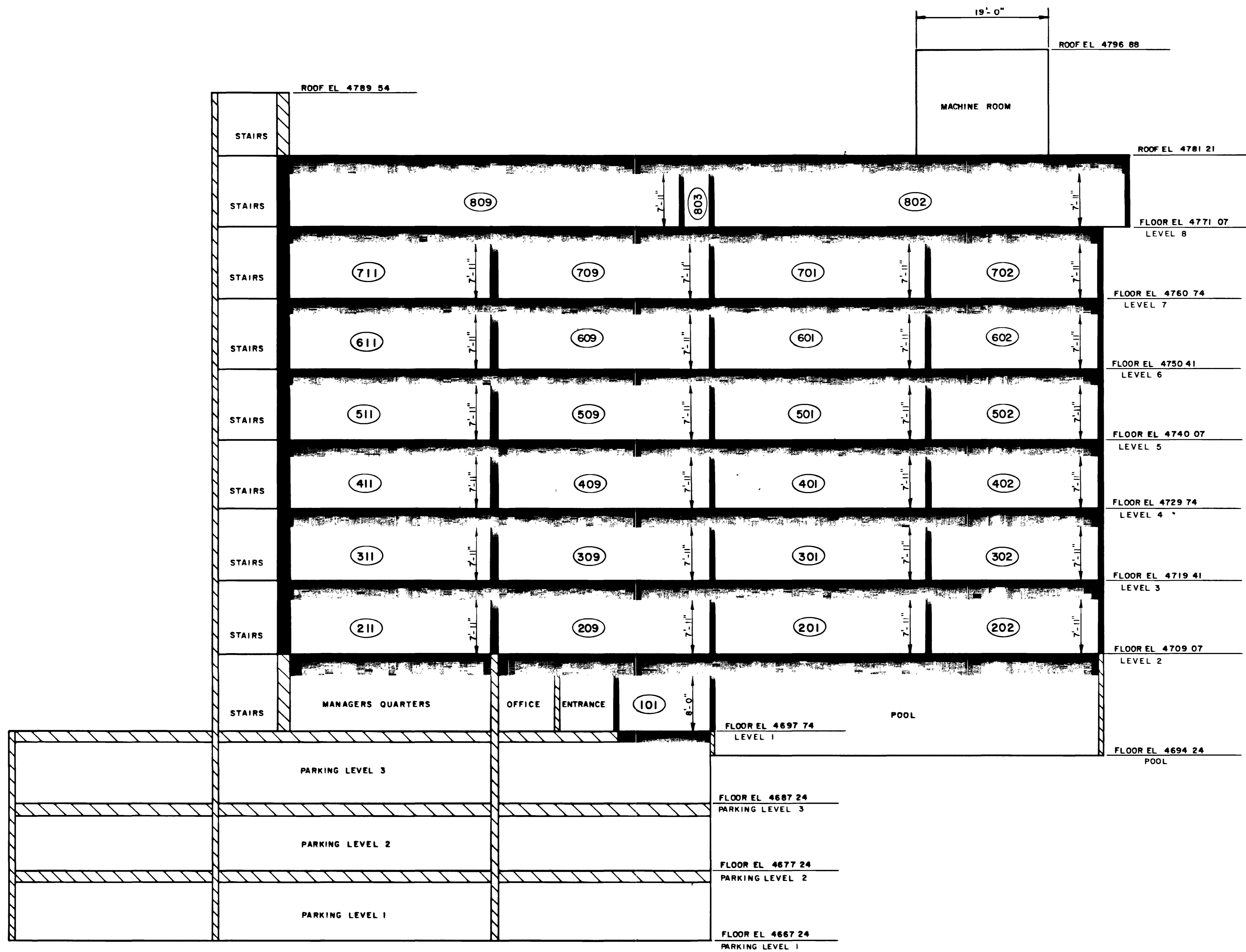
NOTE: Bench Mark: Mesa County Survey Monument  
 at 27 Road and F 34 Road.  
 Elevation = 4668.57

	NO	DATE	REVISION	BY
	<b>HORIZON TOWERS          CONDOMINIUM MAP</b>  <b>WEST ELEVATION</b>			
ROLLAND ENGINEERING 518 28 Road Suite B-103 Grand Junction, Colorado 81501 (303) 243-8300	SCALE 1/8" = 1'-0" DRAWN ADH	CHECKED TDR DATE FEB 1990	JOB NO.	SHEET 9 OF 12

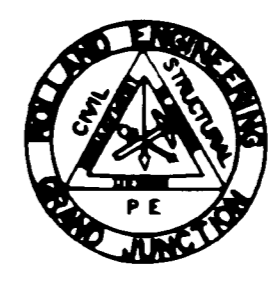


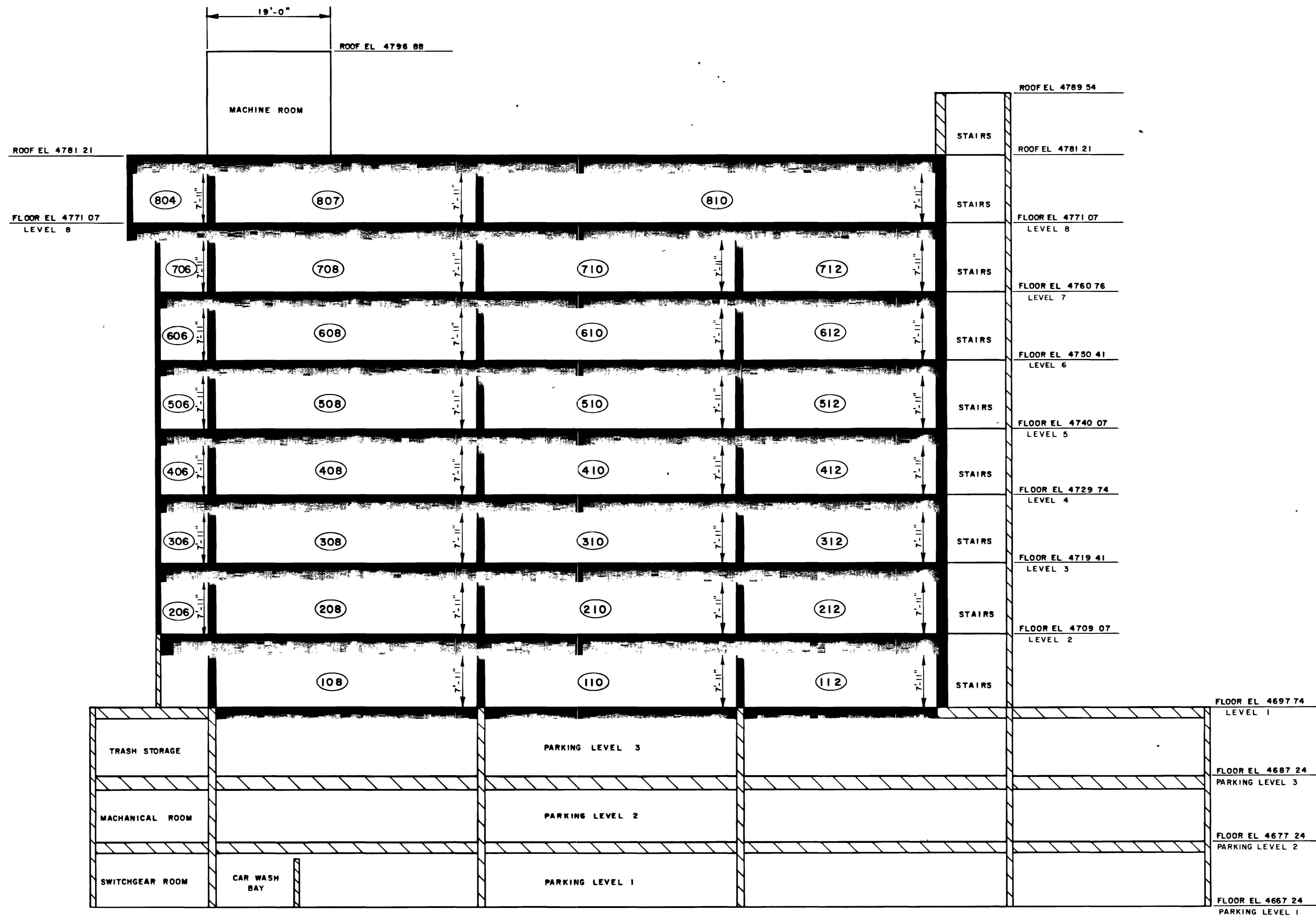
NOTE: Bench Mark: Mesa County Survey Monument  
 at 27 Road and F 3/4 Road.  
 Elevation = 4668.57

	NO		DATE	REVISION	BY
	<b>HORIZON TOWERS          CONDOMINIUM MAP</b>  <b>EAST ELEVATION</b>				
<b>ROLLAND ENGINEERING</b> 518 28 Road Suite B-103 Grand Junction, Colorado 81501 (303) 243-8300		SCALE 1/8" = 1'-0" DRAWN ADH	CHECKED TDR DATE FEB. 1990	JOB NO	SHEET 10 OF 12



NOTE: Bench Mark: Mesa County Survey Monument  
at 27 Road and F 3/4 Road.  
Elevation = 4668.57

	NO DATE REVISION BY		
	HORIZON TOWERS CONDOMINIUM MAP  SOUTH ELEVATION		
ROLLAND ENGINEERING 518 28 Road Suite B-103 Grand Junction, Colorado 81501 (303) 243-8300	SCALE: 1/8" = 1'-0" DRAWN: ADH	CHECKED: TDR DATE: FEB 1990	JOB NO. SHEET 11 OF 12



NOTE: Bench Mark: Mesa County Survey Monument  
 at 27 Road and F 3/4 Road.  
 Elevation = 4668 57

	NO. DATE REVISION BY		
	HORIZON TOWERS CONDOMINIUM MAP NORTH ELEVATION		
ROLLAND ENGINEERING 518 28 Road Suite B-103 Grand Junction, Colorado 81501 (303) 243-8300	SCALE 1/8" = 1'-0" DRAWN ADH	CHECKED TDR DATE FEB 1990	JOB NO. SHEET OF 12 12