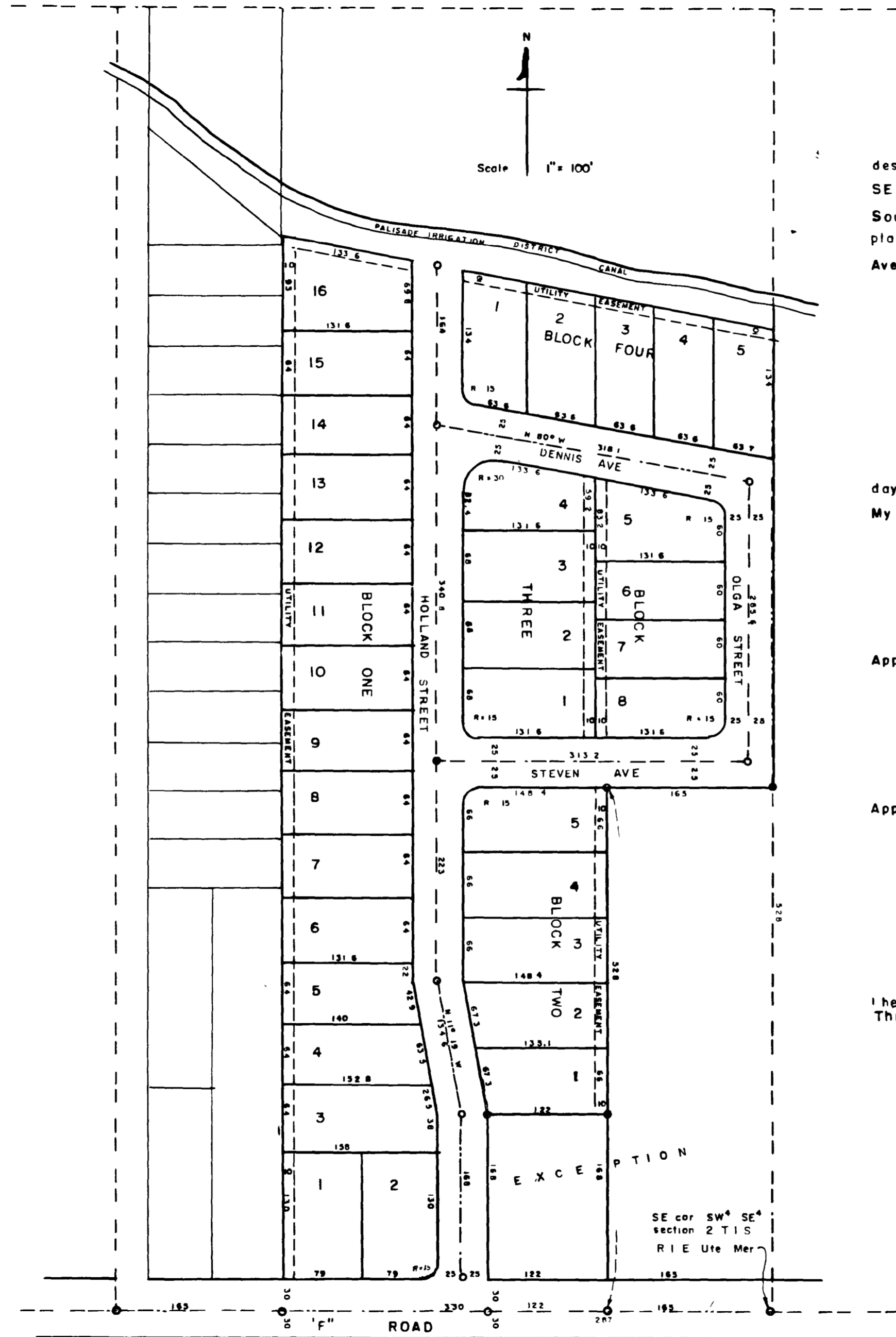


26 06187
Rec No 683106



KNOW ALL MEN BY THESE PRESENTS That Eber Howell and Olga Howell being the owners of the following described land The E 3/4 E 1/2 SW 1/4 SE 1/4 lying South of the Palisade Irrigation District, except beginning at the SE corner of said SW 1/4 SE 1/4, thence West 287 feet, thence North 198 feet, thence East 122 feet, thence North 330 feet, thence East 165 feet, thence South 528 feet to the point of beginning all in Section 2 T15S R1E Ute Meridian, have caused the same to be surveyed and platted as shown hereon, have named said place Howell Subdivision Number Two, and do hereby dedicate the Streets, Avenues and Easements to the use of the public forever In witness whereof we have hereunto placed our hands

Eber Howell
Olga Howell

STATE OF COLORADO }
County of Mesa } SS

The foregoing instrument was acknowledged before me this 31st day of August A D 1956 by Eber Howell and Olga Howell
My commission expires January 6, 1959

L. M. Finnessey
Notary Public

Approved this 28th day of August A D 1956 by the Planning Commission of Mesa County, Colorado

Casper Hansen
Chairman

Approved this 31st day of August A D 1956 by the Board of County Commissioners of Mesa County, Colorado

Clark
Chairman

Attest _____
County Clerk

I hereby certify that this is a true and correct plat of survey of the above described land and of the subdivision of the same
This 15 day of August 1956

Ray S. George
County Surveyor R S

CLIFTON
MESA COUNTY COLORADO
HOWELL SUBDIVISION No 2