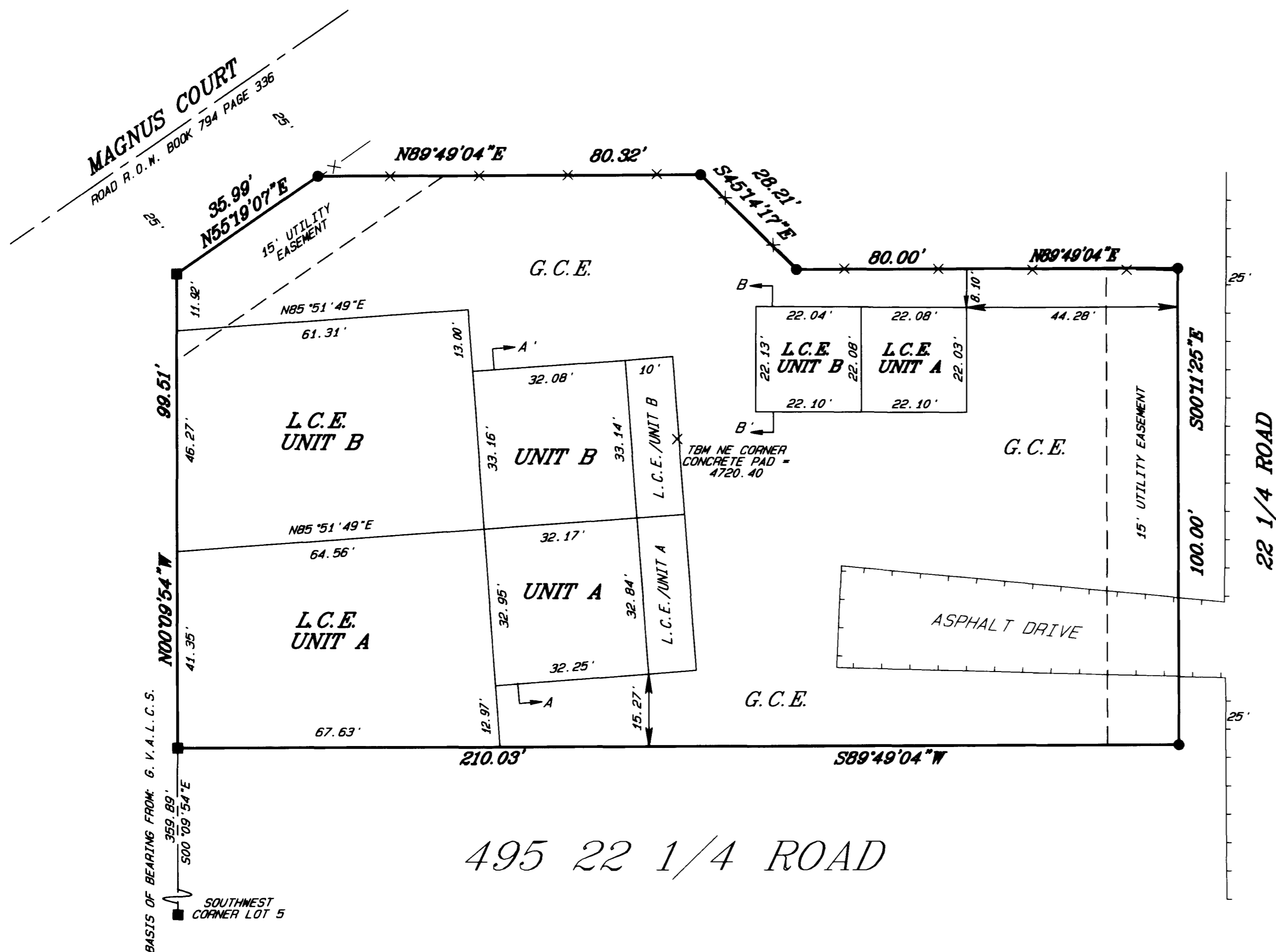


CONDOMINIUM MAP OF HALE CONDOMINIUM



OWNER'S DEDICATION

Russell A. Hale and Barbara L. Hale ("Declarants") are the owners of the following described property, Lot 2 in Mullis Subdivision as amended by Affidavit of Correction recorded in Book 1364 at Page 123, Mesa County, Colorado.

The owners certify that this Condominium Map of HALE CONDOMINIUM has been prepared pursuant to the purposes stated in the Condominium Declaration for Hale Condominium as recorded in Book 4325 at Pages 535-555 in the Clerk and Recorder's office of Mesa County, State of Colorado.

KNOW ALL MEN BY THESE PRESENTS that the Declarants do hereby dedicate, grant and submit the real property and the easements, together with all improvements thereon, to condominium common interest ownership under the style and name of "Hale Condominium" with the various portions of such real property and easements being designated for separate and common ownership as shown on this map and in accordance with the Hale Condominium Declaration.

By: Russell A. Hale Barbara L. Hale
Russell A. Hale Barbara L. Hale

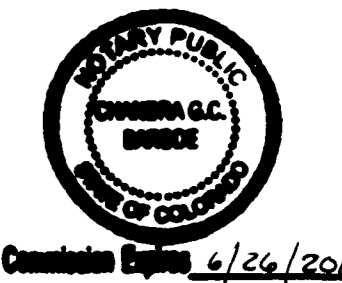
STATE OF COLORADO)
COUNTY OF MESA)

The foregoing owner's dedication was acknowledged before me this 29th day of December A.D., 2006, by Russell A. Hale and Barbara L. Hale.

Witness my hand and official seal Chandra DeBarber
Notary Public

Address 791 Sosilya Ct Grand Junction, CO 81506

My commission expires June 26, 2010



CLERK AND RECORDER'S CERTIFICATE

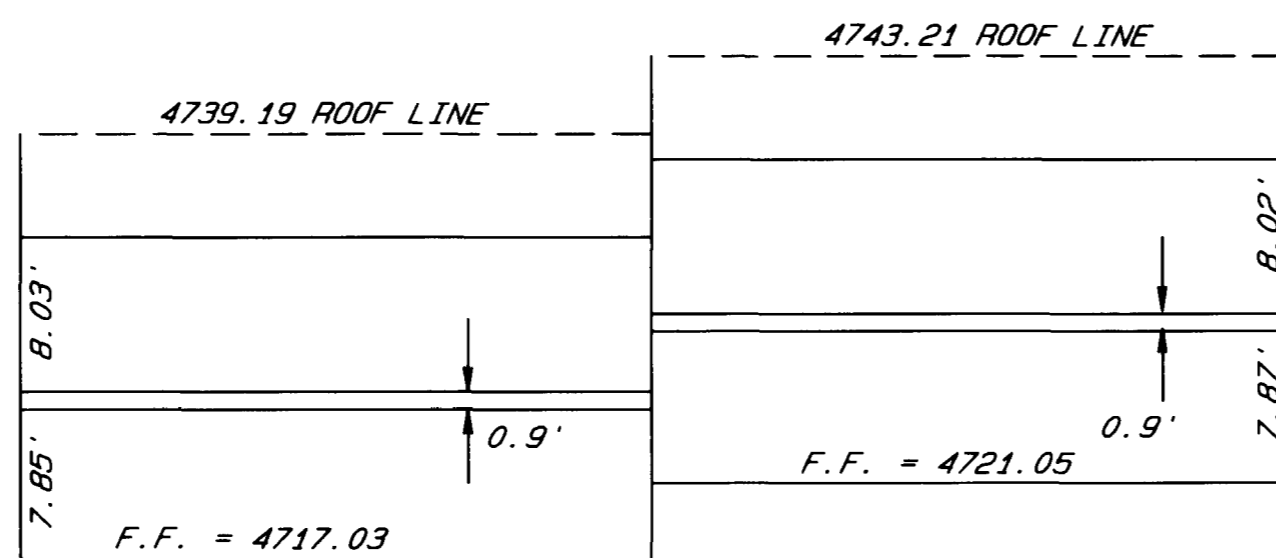
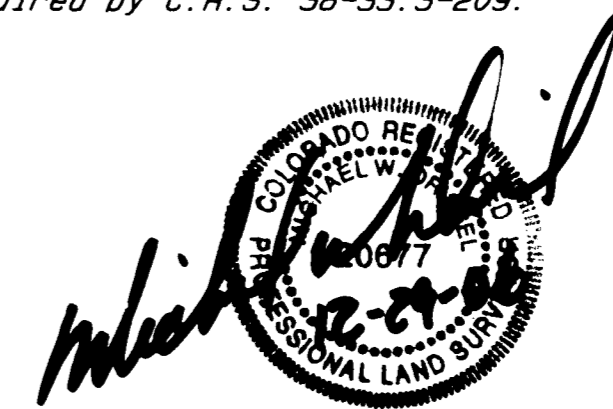
This plat was accepted for filing in the office of the Clerk and Recorder of Mesa County, Colorado at 3:43 o'clock P.M., on this 27th day of DECEMBER A.D. 2006, and was recorded at Reception No. 2356676, Book 4326 and Page 276, Drawer No. 4413 and Fees 10 + 1.

Janice Ward
Clerk and Recorder

Sharon Bridgman
Deputy

SURVEYOR'S STATEMENT

I, Michael W. Drissel, a Professional Land Surveyor licensed in the State of Colorado, do hereby state that this map was prepared under my direct supervision, that it depicts the vertical and horizontal locations of each unit shown hereon, and that it was made from measurements upon and within the existing structures. This map also contains all the information required by C.A.S. 38-33.3-209.



SECTION A - A'
SCALE 1" = 10'

SECTION B - B'
SCALE 1" = 10'

LEGEND & ABBREVIATIONS

- FOUND #5 REBAR W/2" ALUMINUM CAP STAMPED LUKE LS 14115
- SET #5 REBAR W/2" ALUMINUM CAP STAMPED D H SURVEYS LS 20677
- G. V. A. L. C. S. = GRAND VALLEY AREA LOCAL COORDINATE SYSTEM
- G. C. E. = GENERAL COMMON ELEMENT
- L. C. E. = LIMITED COMMON ELEMENT
- F. F. = FINISH FLOOR
- TBM = TEMPORARY BENCH MARK

HALE CONDOMINIUM
LOCATED IN
LOT 1, SEC. 18, T1S, R1W, U.M.

D H SURVEYS INC.
118 OURAY AVE. - GRAND JUNCTION, CO.
(970) 245-8749

Designed By	M. W. D.	Checked By	S. L. H.	Job No.	966-06-01
Drawn By	TMODEL	Date	DEC. 2006	Sheet	1 OF 1

