

OWNER'S CERTIFICATE

T. L. Benson, Inc., a Colorado corporation, and Valley Services Corporation, a Colorado corporation, owners of the herein described real property, do hereby certify that this map of Applridge Condominiums has been prepared pursuant to the declarations of Lakeside Planned Unit Development as recorded with the Clerk and Recorder of Mesa County, Colorado.

T. L. BENSON, INC.

By *L. L. Benson*



Attest: *Marion J. Benson*
Secretary

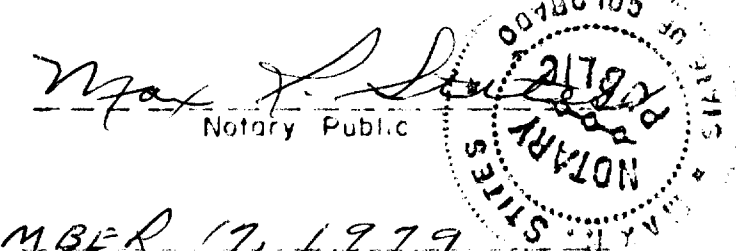
VALLEY SERVICES CORPORATION

By *O. K. Clifton*
President

Attest: *Betty Willhite*
Secretary

STATE OF COLORADO } ss
COUNTY OF MESA }

The foregoing was acknowledged before me this 1st day of April, 1976, by T. L. Benson, President and Marion J. Benson as Secretary of T. L. Benson, Inc., a Colorado corporation, and by O. K. Clifton, President and Betty Willhite Secretary of Valley Services Corporation.



My commission expires: DECEMBER 17, 1979

SURVEYOR'S CERTIFICATE

Clarence J. Bielak, Registered Land Surveyor, certifies that this plat consisting of three pages, depicting the land, buildings and other improvements, with diagrammatic floor plans of each building was plotted from a field survey made under my supervision on August 27, 1973, subsequent to substantial completion of the improvements.

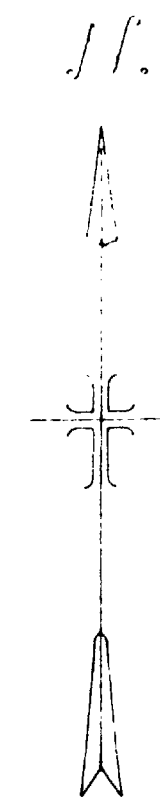
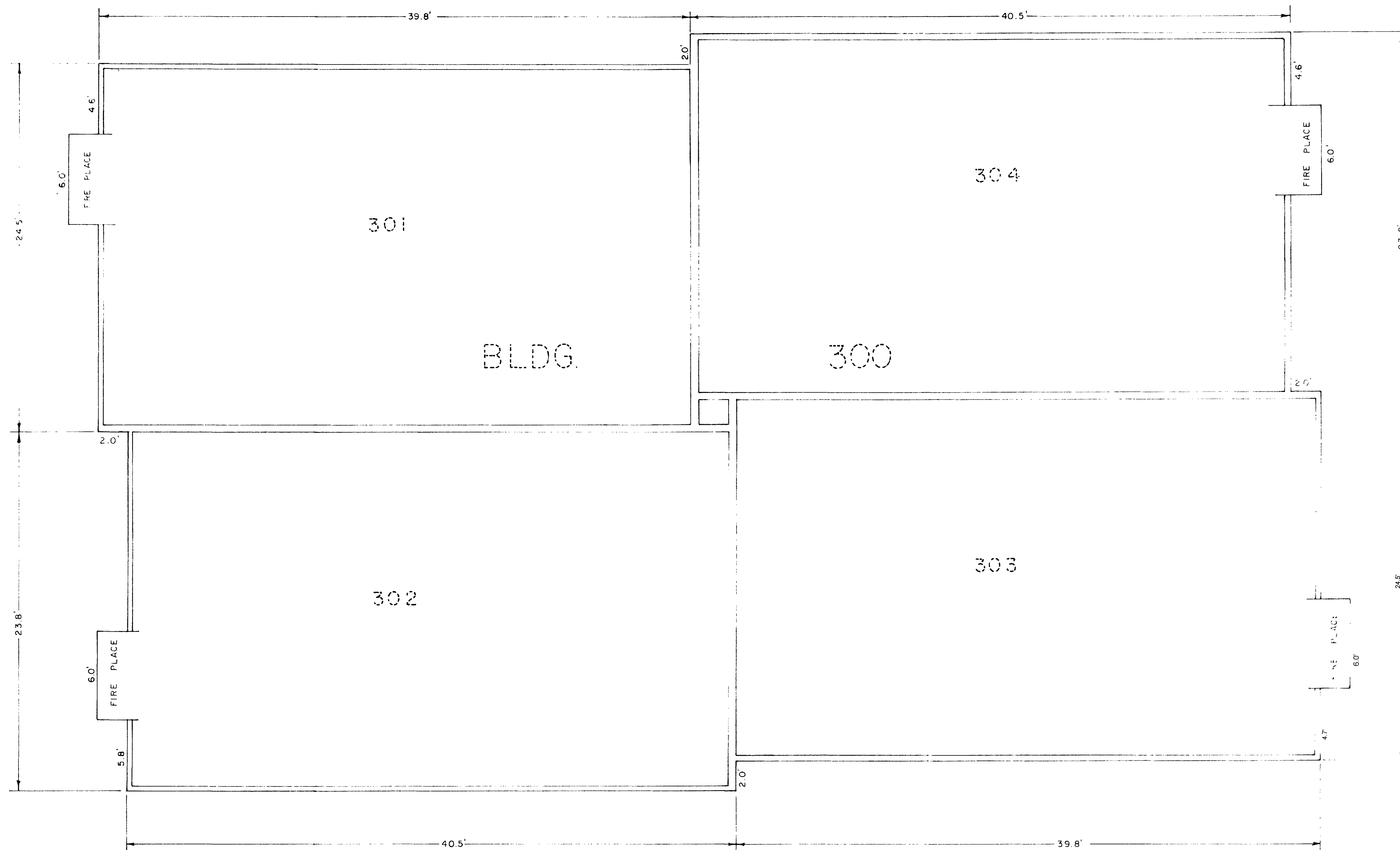
Clarence J. Bielak
Registered Land Surveyor

STATE OF COLORADO, COUNTY OF MESA
RECORDED AT 1130 110515
RECEPTION NO. 110515, EARL HANVIER, RECORDER

APR 6 1976

SCALE: 1" = 30'

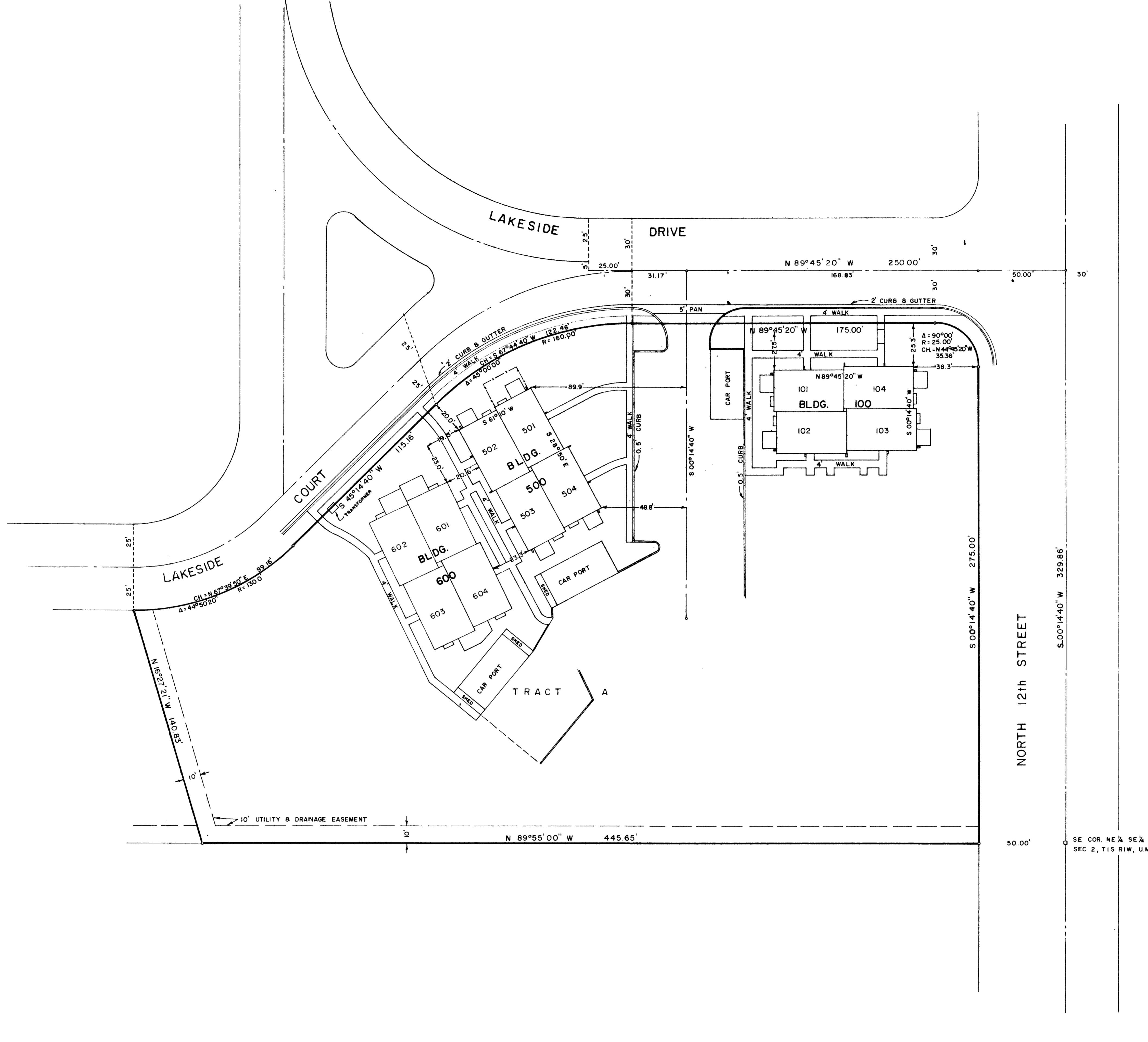
REVISED 3/29/76	SURVEYED C. J. BIELAK	DRAWN R. W. QUINN
REVISED 9/28/75	WESTERN ENGINEERS, INC. - GRAND JUNCTION, COLO. DWG. 1-029-17-A	
REVISED 3/24/75	SITE & PLOT PLAN	
REVISED 10/28/74	1155 LAKESIDE DRIVE	
REVISED 3/29/74	APPLRIDGE CONDOMINIUMS	
	IN	
	LAKESIDE SUBDIVISION	



SCALE: 1/4" = 1'-0" Page 5

BUILDING 300
 1155 LAKESIDE DRIVE
 APPLERIDGE CONDOMINIUMS
 IN
 LAKESIDE SUBDIVISION

SURVEYED D.B. DRAWN R.W.O.
 WESTERN ENGINEERS, INC. GRAND JUNCTION, COLO. DRG 011-429-172



OWNER'S CERTIFICATE

T. L. Benson, Inc., a Colorado corporation, and Valley Services Corporation, a Colorado corporation, owners of the herein described property, do hereby certify that this map of Applridge Condominiums has been prepared pursuant to the declarations of Lakeside Planned Unit Development as recorded with the Clerk and Recorder of Mesa County, Colorado.

T. L. BENSON, INC.

T. L. Benson
Secretary

Attest: *Marion J. Benson*
Secretary

VALLEY SERVICES CORPORATION

Attest: *Troy E. Wade*
Secretary

STATE OF COLORADO } ss
COUNTY OF MESA }

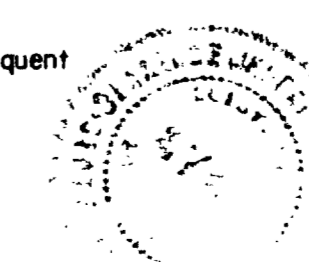
The foregoing was acknowledged before me this 4th day of September, 1973, by T. L. Benson, President and Marion J. Benson, Secretary of T. L. Benson, Inc., a Colorado corporation, and by Edward R. Hoot, Troy E. Wade and Troy E. Wade, Secretary of Valley Service Corporation.

My commission expires September 11, 1978

SURVEYOR'S CERTIFICATE

Clarence J. Bielak, Registered Land Surveyor, certifies that this plat consisting of three pages, depicting the land, buildings and other improvements, with diagrammatic floor plans of each building was platted from a field survey made under my supervision on August 27, 1973, subsequent to substantial completion of the improvements.

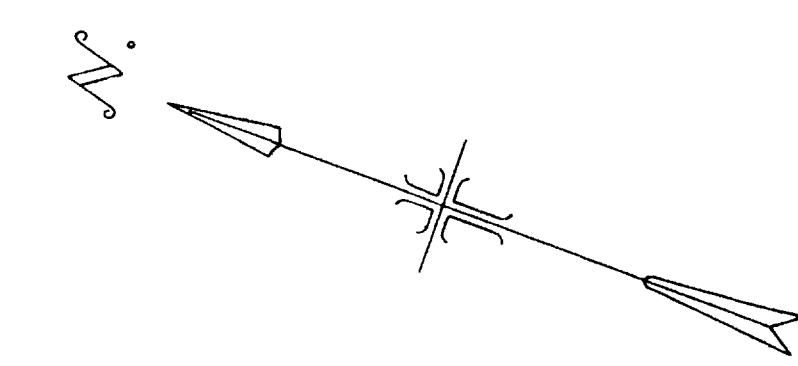
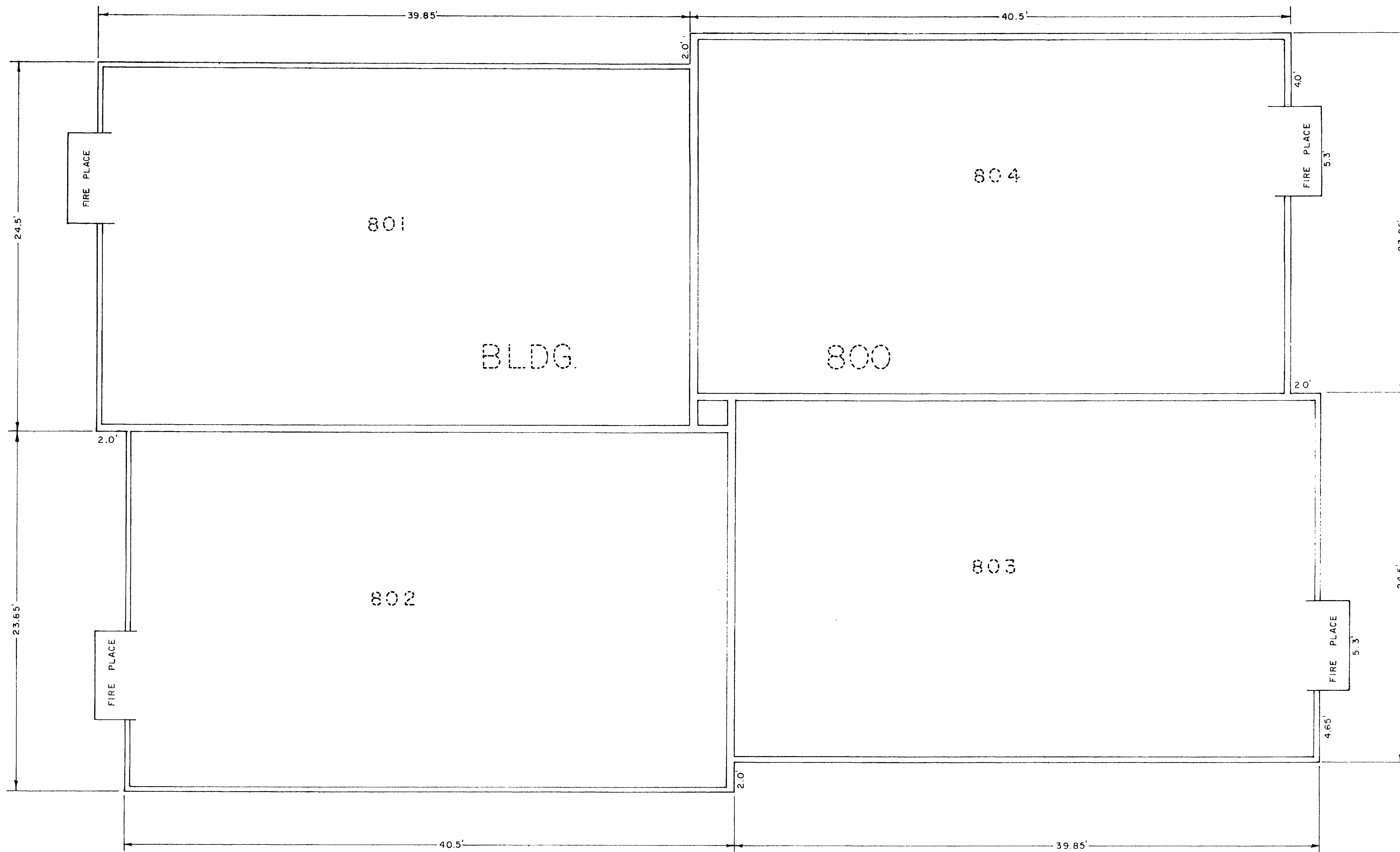
Clarence J. Bielak
Registered Land Surveyor



SCALE: 1" = 30'

REVISED 10/28/74 REVISED 3/29/74	SITE & PLOT PLAN	
	1155 LAKESIDE DRIVE	
	APPLRIDGE CONDOMINIUMS	
	IN LAKESIDE SUBDIVISION	
SURVEYED <u>C. J. BIELAK</u> DRAWN <u>R. W. QUINN</u>		
WESTERN ENGINEERS, INC. - GRAND JUNCTION, COLO. DWG. 1-422-17A		

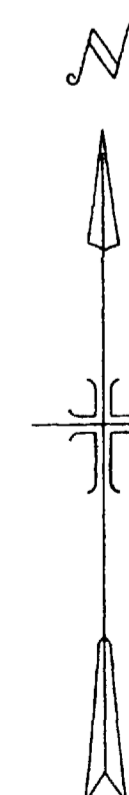
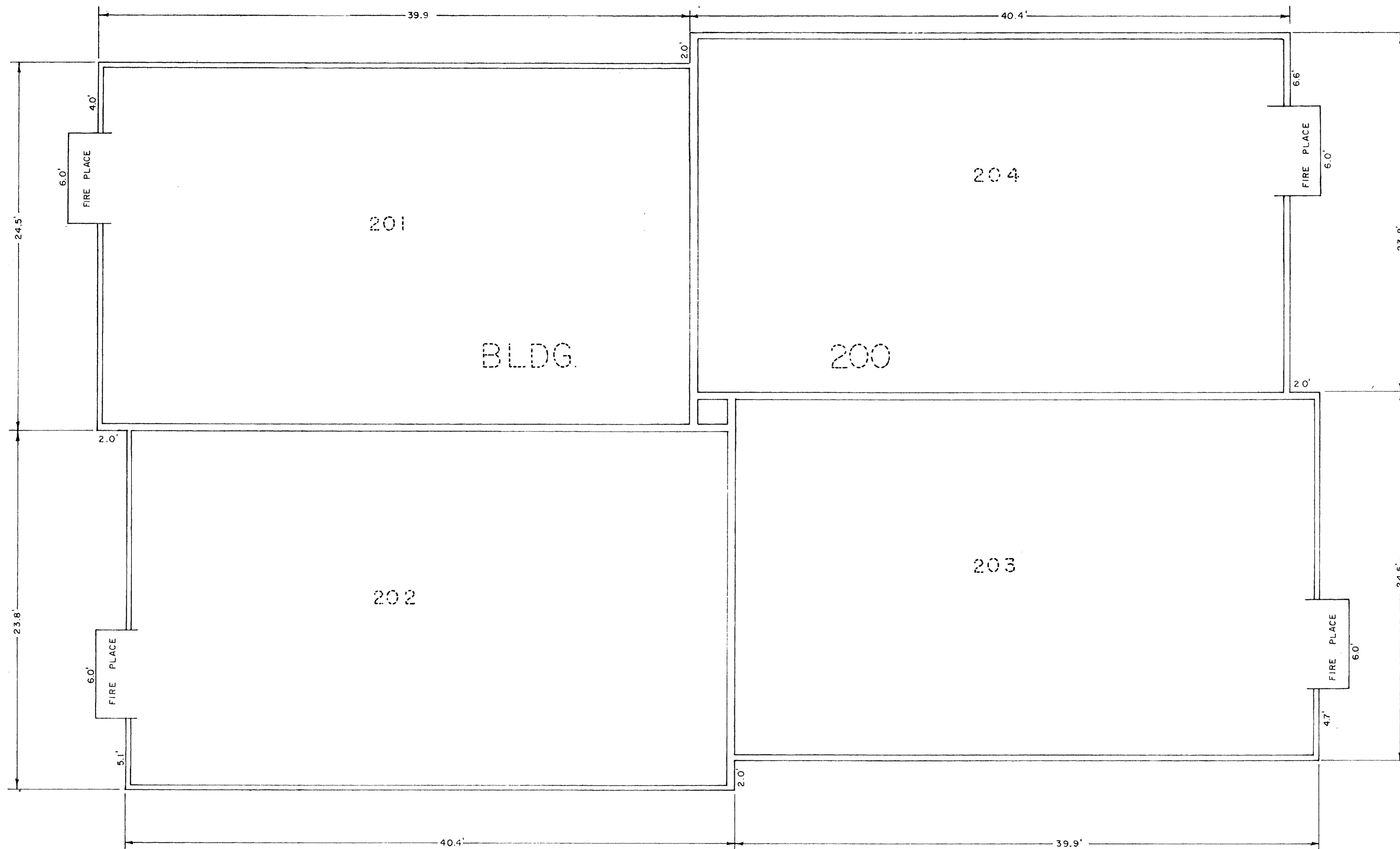
01163403.T1



SCALE: 1/4" = 1'-0" Page 2

BUILDING 800
 1155 LAKESIDE DRIVE
 APPLERIDGE CONDOMINIUMS
 IN
 LAKESIDE SUBDIVISION

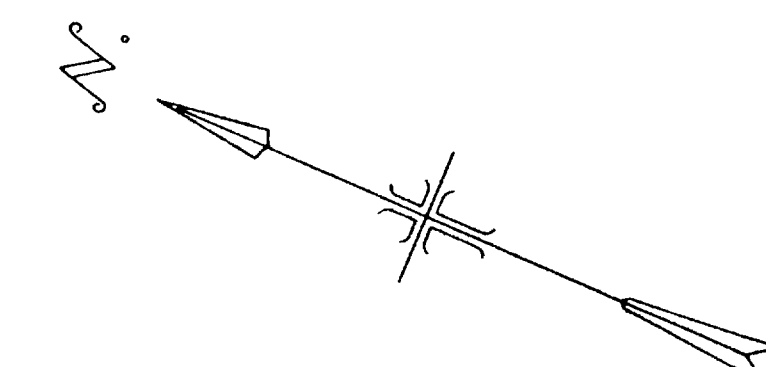
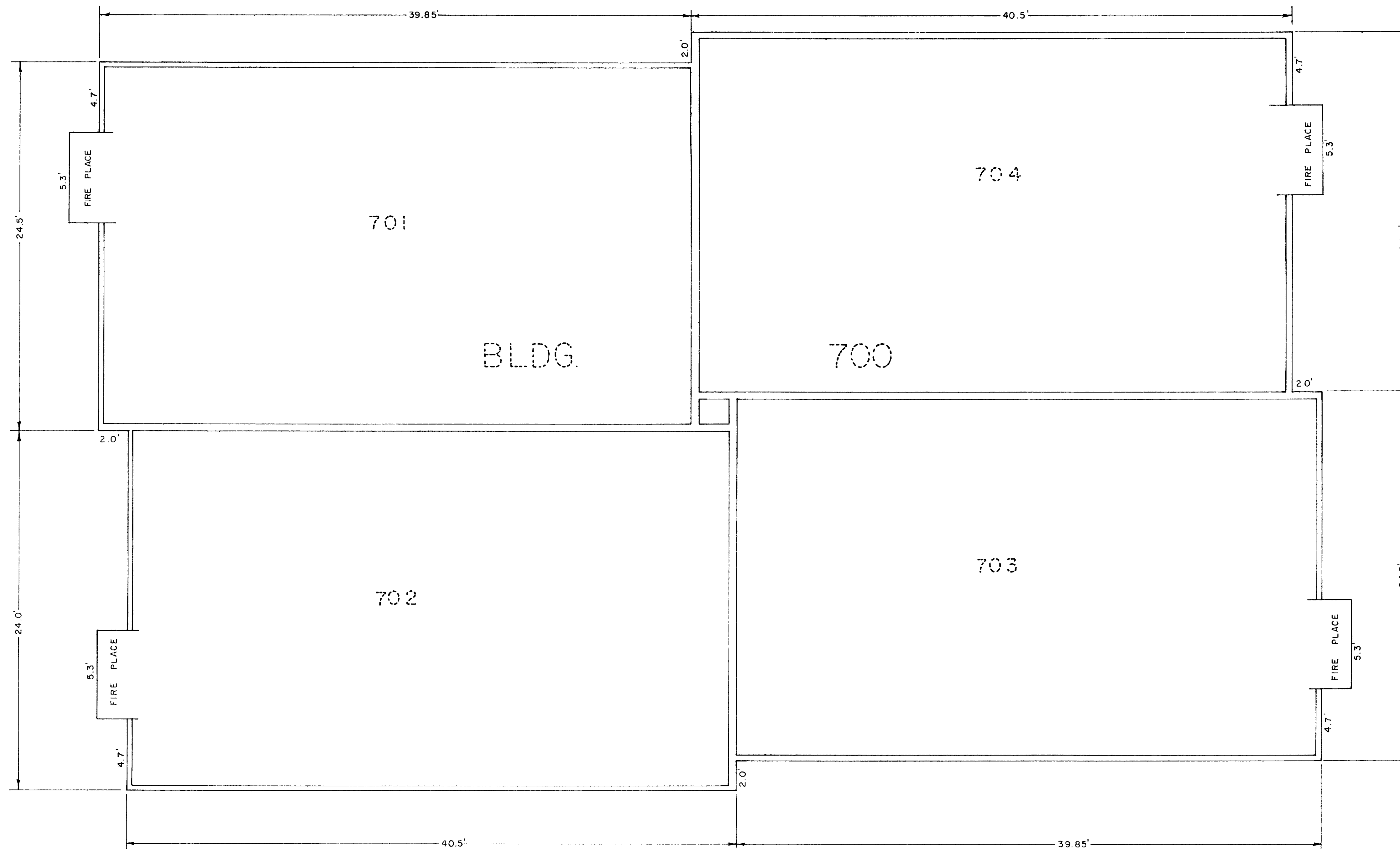
SURVEYED D.B. DRAWN R.W.O.
 WESTERN ENGINEERS, INC. GRAND JUNCTION, COLO. DWO 811-428-173



SCALE: 1/4" = 1'-0" Page 6

BUILDING 200
 1155 LAKESIDE DRIVE
 APPLERIDGE CONDOMINIUMS
 IN
 LAKESIDE SUBDIVISION

SURVEYED D.B. DRAWN R.W.O.
WESTERN ENGINEERS, INC. GRAND JUNCTION, COLO. DWG. 811-428-17E



SCALE: 1/4" = 1'-0" Page 3

BUILDING 700
 1155 LAKESIDE DRIVE
 APPLERIDGE CONDOMINIUMS
 IN
 LAKESIDE SUBDIVISION

SURVEYED D.B. DRAWN R.W.O.
 WESTERN ENGINEERS, INC. GRAND JUNCTION, COLO. DWG. #11-028-173

01163406.tif



OWNER'S CERTIFICATE

T. L. Benson, Inc., a Colorado corporation, and Valley Services Corporation, a Colorado corporation, owners of the herein described real property, do hereby certify that this map of Appleridge Condominiums has been prepared pursuant to the declarations of Lakeside Planned Unit Development, as recorded with the Clerk and Recorder of Mesa County, Colorado.

T. L. BENSON, INC.

By *L. L. Benson*

Attest: *Marion J. Benson*
Secretary

VALLEY SERVICES CORPORATION

By *Stanley Anderson*
President

Attest: *Betty Willard*
Secretary

STATE OF COLORADO } ss
COUNTY OF MESA }

The foregoing was acknowledged before me this 29th day of September, 1973, by T. L. Benson, President and Marion J. Benson as Secretary of T. L. Benson, Inc., a Colorado corporation, and by Stanley R. Anderson, Senior Vice President and ~~Secretary~~ Secretary of Valley Services Corporation.

Betty Willard
Notary Public

My commission expires: 6/22/77

SURVEYOR'S CERTIFICATE

Clarence J. Bielak, Registered Land Surveyor, certifies that this plat consisting of three pages, depicting the land, buildings and other improvements, with diagrammatic floor plans of each building was plotted from a field survey made under my supervision on August 27, 1973, subsequent to substantial completion of the improvements.

Clarence J. Bielak
Registered Land Surveyor

1094742

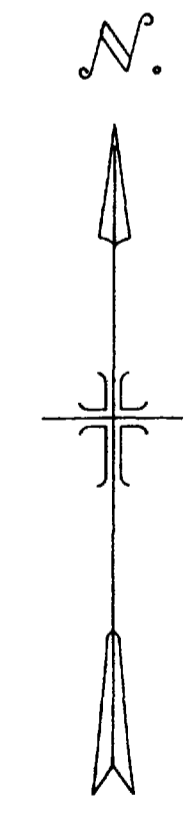
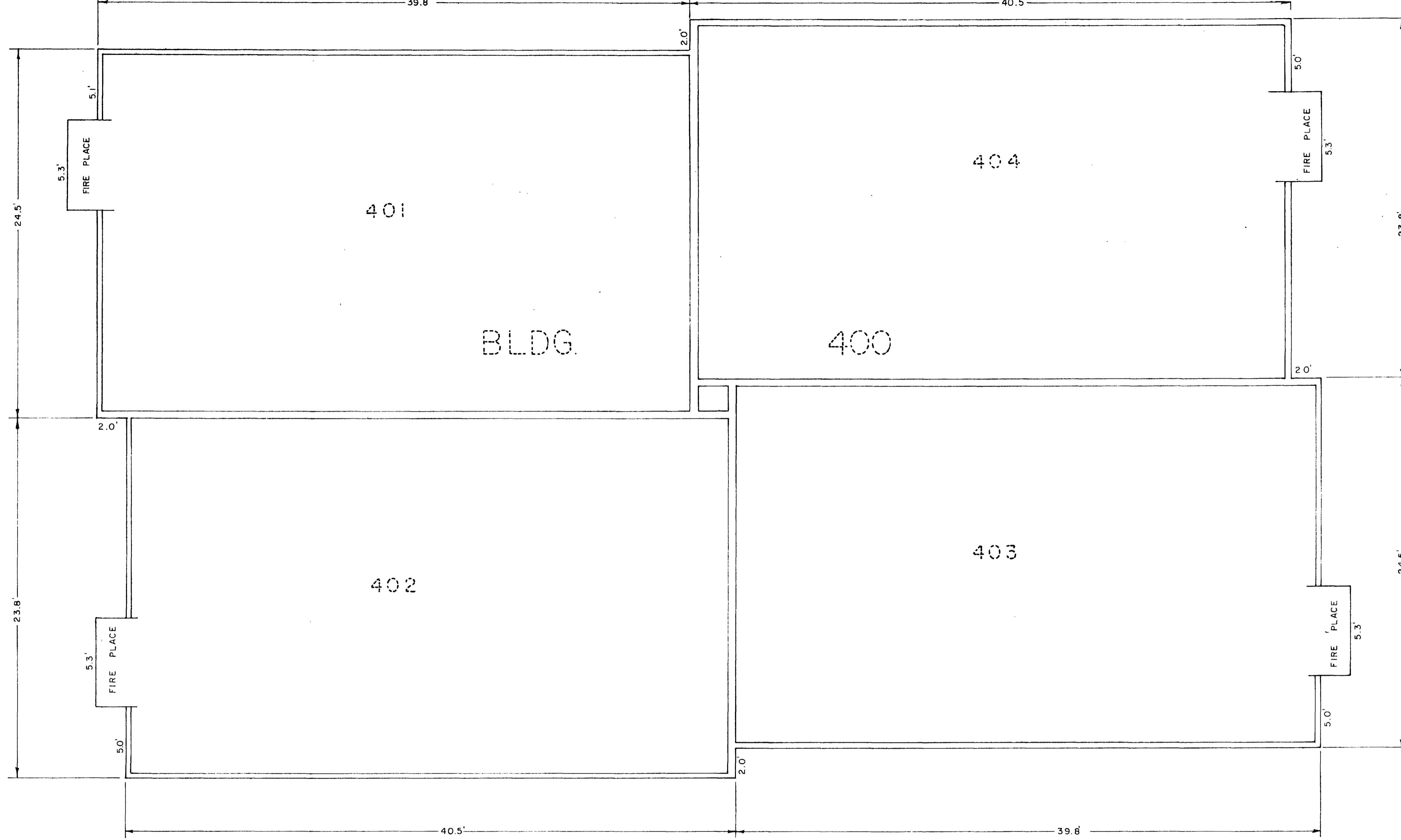
STATE OF COLORADO } ss
County of MESA }

I hereby certify that this instrument was filed for record
OCT 3 1975
at 11:20 o'clock A.M. and recorded
in Book Page
EARL SAWYER, County Clerk & Recorder
By Deputy

FILED 10.10

SCALE: 1" = 30'

REVISED 9/26/75	<p>SITE & PLOT PLAN 1155 LAKESIDE DRIVE APPLERIDGE CONDOMINIUMS IN LAKESIDE SUBDIVISION</p>
REVISED 3/24/75	
REVISED 10/28/74	
REVISED 3/29/74	<p>SURVEYED C. J. BIELAK DRAWN R. W. QUINN WESTERN ENGINEERS, INC. - GRAND JUNCTION, COLO. DWG. - 928-17A</p>



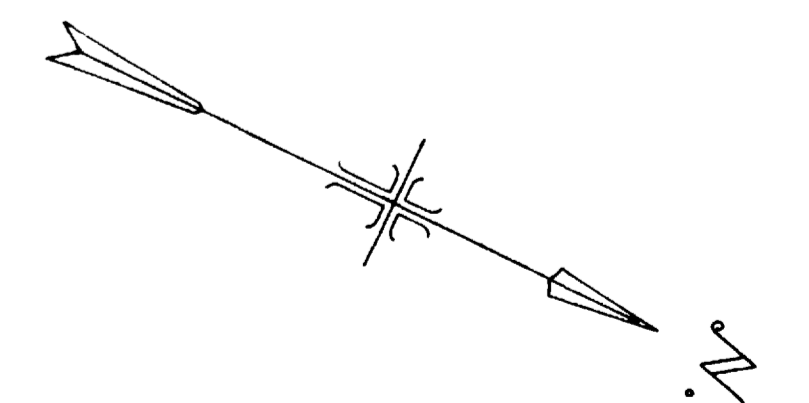
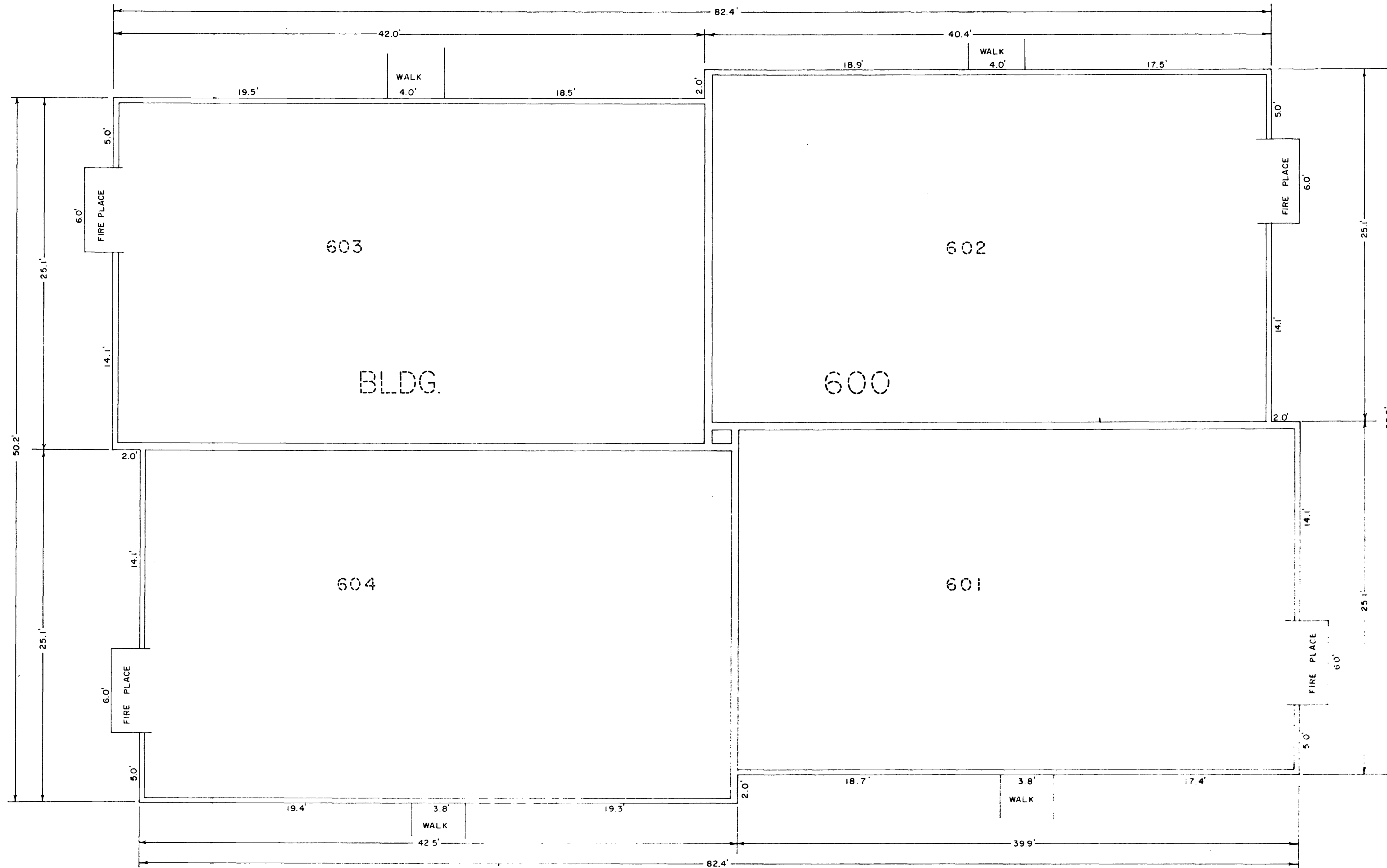
SCALE: 1/4" = 1'-0" Page 4

BUILDING 400
 1155 LAKESIDE DRIVE
 APPLERIDGE CONDOMINIUMS
 IN
 LAKESIDE SUBDIVISION

SURVEYED D.B. DRAWN R.W.Q.

WESTERN ENGINEERS, INC. GRAND JUNCTION, COLO. DWG. 811-429-173

01163408.tif



SCALE: 1/4" = 1'-0"

BUILDING 600
 1155 LAKESIDE DRIVE
 APPLERIDGE CONDOMINIUMS
 IN
 LAKESIDE SUBDIVISION
 SURVEYED D.B. DRAWN R.W.O.
 WESTERN ENGINEERS, INC. GRAND JUNCTION, COLO. DWS. 1-428-17.0