

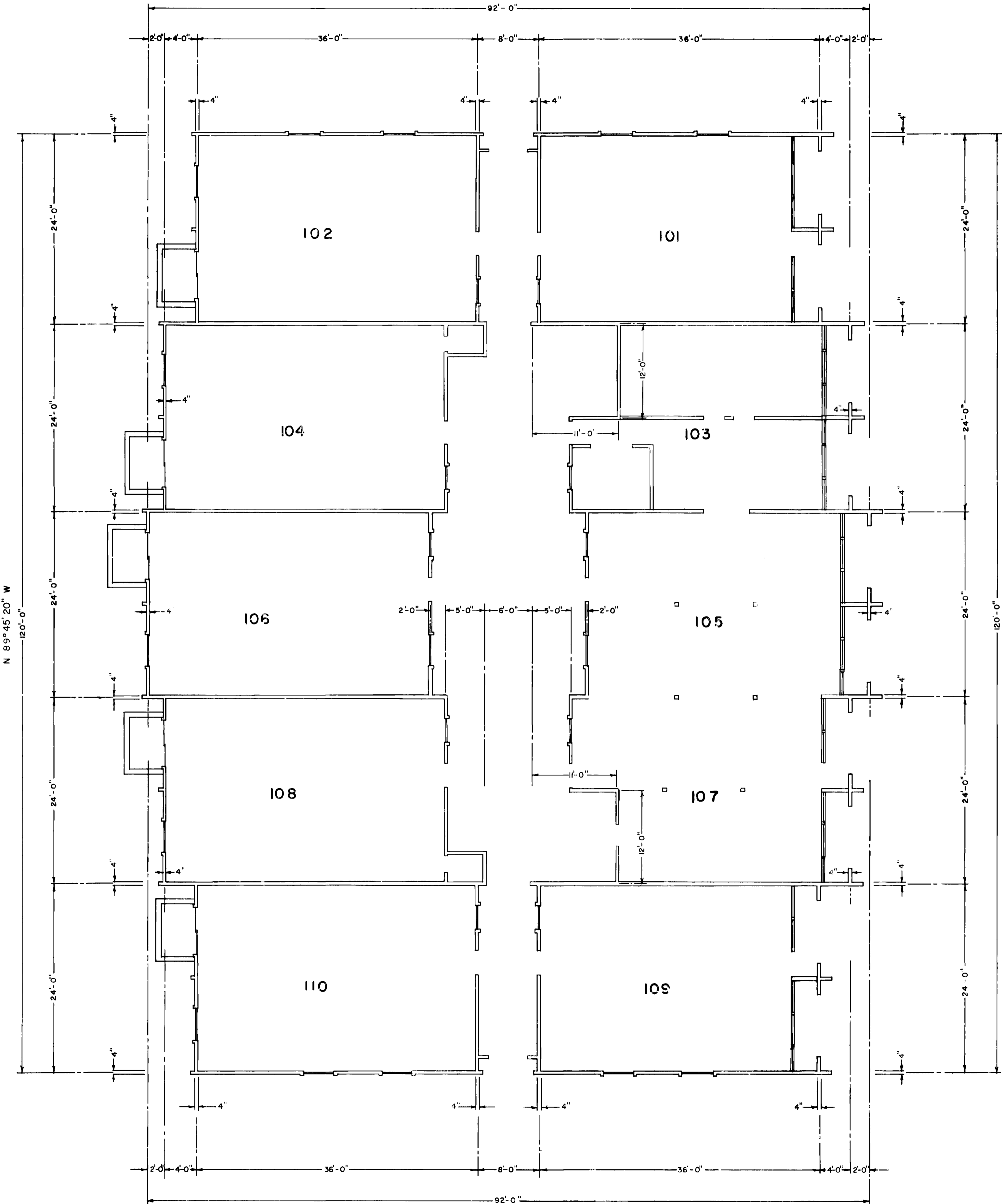
Legal Description:
That part of Tract B in Lakeside Subdivision Filing Number Two as Recorded in Book 11, Page 70 with the Mesa County Clerk and Recorders office in Mesa County, Colorado said subdivision being in the City of Grand Junction, Colorado.

Beginning at a point from whence the NE Corner of said Tract B bears S 89°45'20" E 25.0ft and N 00°14'40" E 463.94ft, Thence S 00°14'40" E 145.0ft, Thence N 89°45'20" W 207.0ft, Thence N 00°14'40" E 147.73ft, Thence S 89°45'20" E 47.1ft, Thence N 00°14'40" E 4.0ft, Thence S 89°45'20" E 24.0ft, Thence S 00°14'40" E 2.0ft, Thence S 89°45'20" E 24.33ft, Thence S 00°14'40" W 2.0ft, Thence S 89°45'20" E 24.0ft, Thence S 00°14'40" W 4.0ft, Thence S 89°45'20" E 35.0ft, Thence S 00°14'40" W 147.73ft, Thence S 89°45'20" E 113.57ft to the Point of Beginning

Also,
Beginning at a point from whence the NE Corner of said Tract B bears N 00°14'40" E 22.94ft and S 89°45'20" E 25.0ft, Thence N 89°45'20" W 103.5ft, Thence N 00°14'40" E 33.13ft, Thence N 89°45'20" W 45.0ft, Thence S 00°14'40" W 4.0ft, Thence N 89°45'20" W 24.0ft, Thence S 00°14'40" W 2.0ft, Thence N 89°45'20" W 24.33ft, Thence N 00°14'40" E 2.0ft, Thence N 89°45'20" W 24.0ft, Thence N 00°14'40" E 4.0ft, Thence N 89°45'20" W 47.1ft, Thence N 00°14'40" E 145.0ft, Thence N 89°45'20" W 20.0ft, Thence N 00°14'40" E 32.5ft, Thence S 89°59'00" E 288.0ft, Thence S 00°14'40" W 211.84ft to the Point of Beginning.

1063542

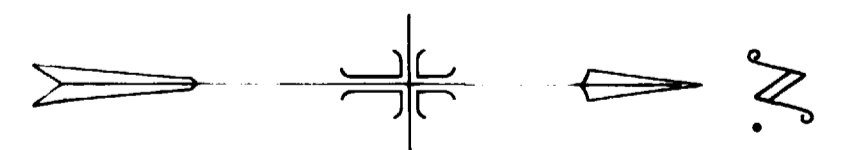
N 00° 14' 40" E



FINISHED FLOOR ELEV 4675.31'

1063543

MAR 11 1935
 COUNTY OF ARIZONA
 COUNTY CLERK
 GRAND JUNCTION, ARIZONA



SCALE: 1/4" = 1'-0"

SUNDOWNER
 3150 LAKESIDE DRIVE
 LAKEVIEW TERRACE
 IN
 LAKESIDE SUBDIVISION

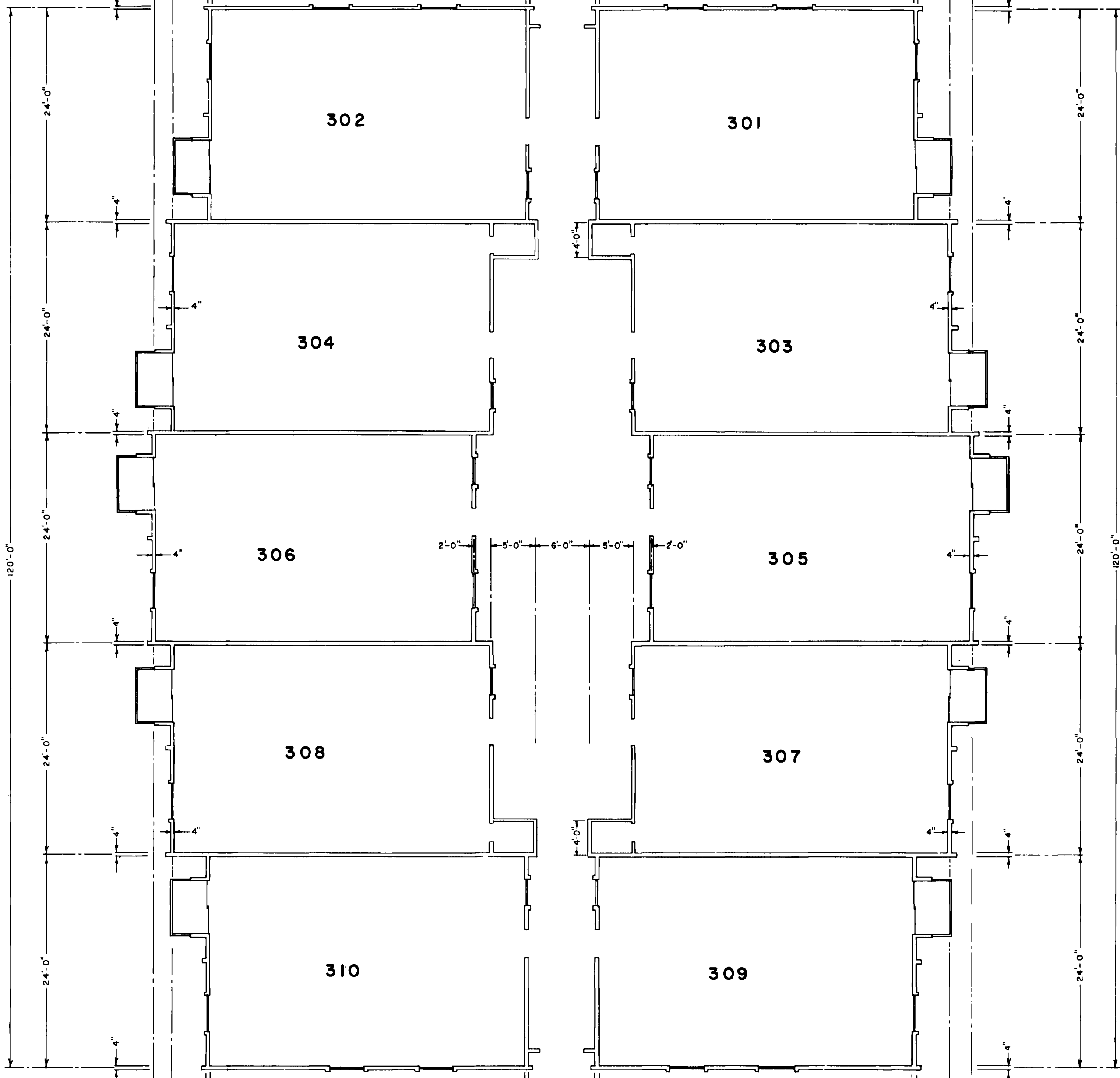
SURVEYED L.F. DRAWN R.W.Q.
 WESTERN ENGINEERS, INC. GRAND JUNCTION, COLO. DWG. 1-429-19 B

FIRST FLOOR

N 00° 14' 40" E

92'-0"

2'-0" 4'-0" 36'-0" 8'-0" 36'-0" 4'-0" 2'-0"

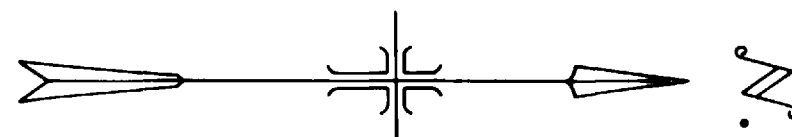


N 89° 45' 20" W
120'-0"

FINISHED FLOOR ELEV. 4693.17'

3063545
1063545

STATE OF COLORADO
 County of GRAND
 I hereby certify that this instrument was
 properly recorded
 MAR 11 1974
 at 1:35 o'clock P. M. and recorded
 in Book _____ Page _____
 ANNIE M. BUNSTON, County Clerk & Recorder
 By _____ Deputy



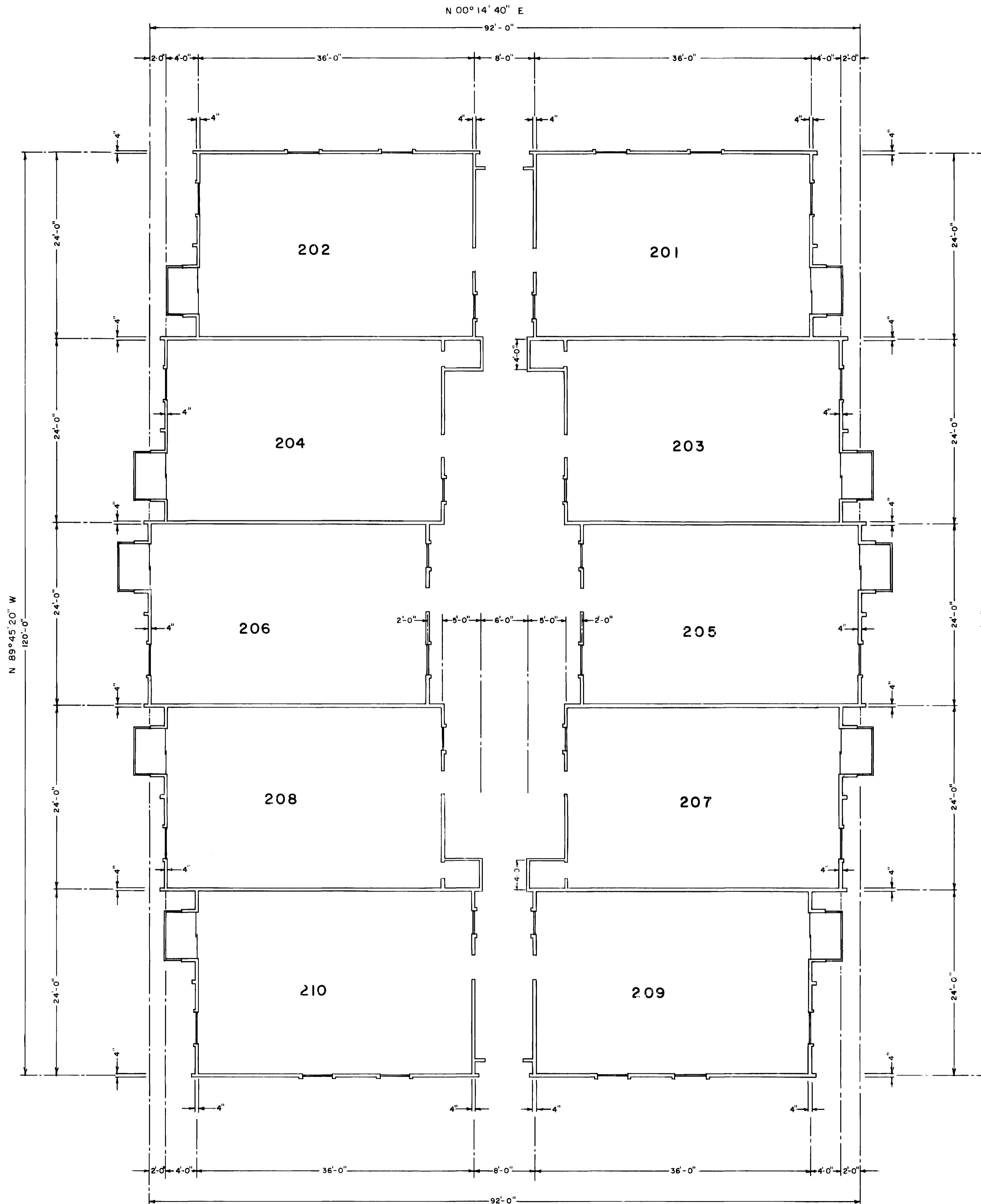
SCALE: 1/8" = 1'-0"

SUNDOWNER
 3150 LAKESIDE DRIVE
LAKEVIEW TERRACE
 IN
LAKESIDE SUBDIVISION

SURVEYED L. F. DRAWN R. W. Q.
 WESTERN ENGINEERS, INC. GRAND JUNCTION, COLO. DWG. 1-429-19 D

UPPER FLOOR

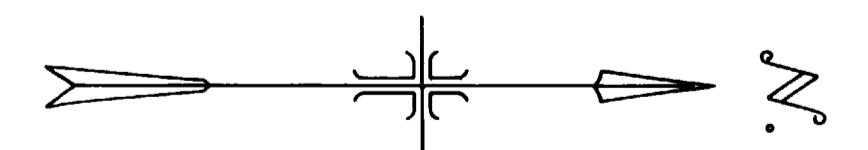
01171903.tif



FINISHED FLOOR ELEV. 4684.24'

1063544

MAR 11



SCALE: 1/4" = 1'-0"

SUNDOWNER	
3150 LAKESIDE DRIVE	
LAKEVIEW TERRACE	
IN	
LAKESIDE SUBDIVISION	
SURVEYED	DRAWN
L.F.	R.W.Q.
WESTERN ENGINEERS, INC. GRAND JUNCTION, COLO. REG. 1-29-19	

MIDDLE FLOOR