

Subdivision PD-B 10th & Belford

Date 1-6-77 Item # 3-77

Petitioner C.B.W. Builders

Preliminary Review Agencies Comments

Final Review Agencies Comments

Eng. - recommend against washed rock between S.W. and street - rocks end up on S.W. or in street creating additional problems

Park & Rec - suggest less massive Junipers. Prefer that cottonwood not be used - recommend Honey Locust, Linden or Green Ash.

Eng. - rock inside S.W. should be contained w. a 2" lip of redwood.

Action Taken

P.C. Approved 9 Feb 1977

C.C. Approved 2 Mar 77

Comments

- 1) Fence to align w. Spatky's
- 2) Grass instead of gravel
- 3) New S.W. to line up w. exist.
- 4) 5' S.W. on 10th.

Action Taken

P.C. Approved 30 Mar 77

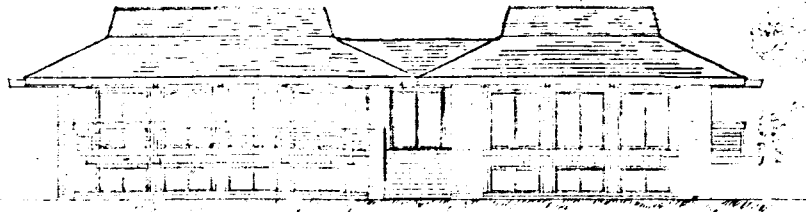
C.C. Approved 6 April 77

Comments

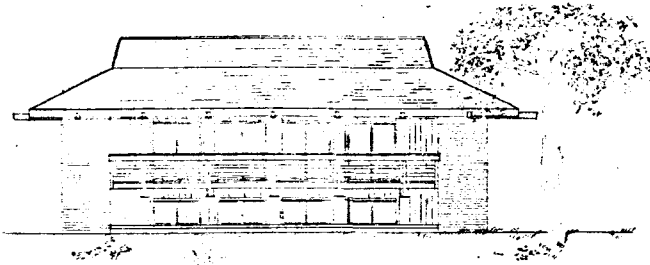
- 1) Eng. comment on retaining gravel
- 2) Exit to alley on west by trash container.

ITEMS REQUIRED FROM DEVELOPER

- Check Utility Agreement Title Investigation
- Drainage Landscaping Covenants
- Improvements Guarantee Annexation Other (Specify)



south elevation



east elevation

owner: *MR. & MRS. BRUCE L. JONES*

designer:
developer: *C. B. W. BUILDERS*

scale 1" = 20'-0"



landscape notes

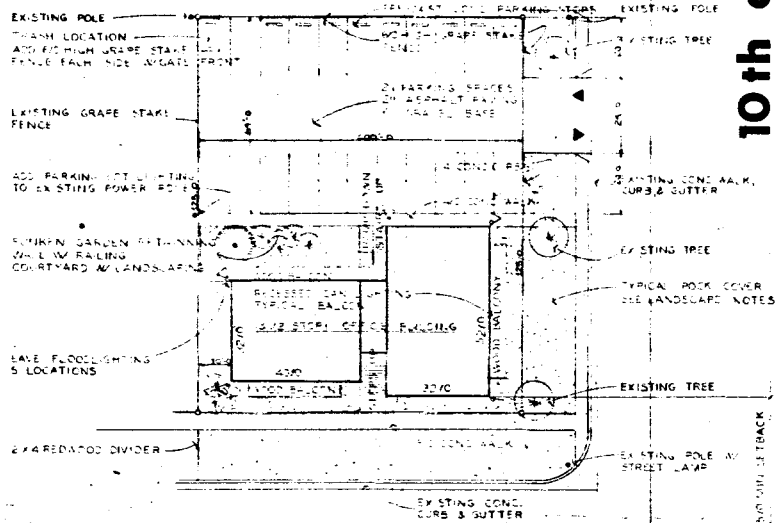
SYMBOL	QUANTITY	PLANT	REMARKS
(Symbol: Circle with crosshairs)	1	COTTONWOOD COTTONWOOD COTTONWOOD	PLANT AT FRONT LEVEL 2 1/2' BALLED & BURLAPPED
(Symbol: Circle with vertical lines)	1	SPEN	1 1/2" DIAM. TRUNK & BRANCHING PLANT IN TRIM GROUP
(Symbol: Circle with horizontal lines)	1	SMALL PLANT	SMALL PLANT AT GRADE LEVEL
(Symbol: Circle with diagonal lines)	1	SMALL PLANT	SMALL PLANT AT GRADE LEVEL

NOTES:
1. ALL PLANT MATERIAL TO BE WASHED RIVER AGGREGATE AS NECESSARY TO 30" DEPTH.
2. ALL PLANT MATERIAL TO BE WASHED RIVER AGGREGATE AS NECESSARY TO 30" DEPTH.
3. ALL PLANT MATERIAL TO BE WASHED RIVER AGGREGATE AS NECESSARY TO 30" DEPTH.

PDB ZONE

C-1 ZONE

alley 20'



10th ave. 80'

R-3 ZONE

belford st. 80'

R-2 ZONE

PROPOSED PDB ZONE

notes

NOTES:
1. ALL PLANT MATERIAL TO BE WASHED RIVER AGGREGATE AS NECESSARY TO 30" DEPTH.
2. ALL PLANT MATERIAL TO BE WASHED RIVER AGGREGATE AS NECESSARY TO 30" DEPTH.
3. ALL PLANT MATERIAL TO BE WASHED RIVER AGGREGATE AS NECESSARY TO 30" DEPTH.
4. ALL PLANT MATERIAL TO BE WASHED RIVER AGGREGATE AS NECESSARY TO 30" DEPTH.
5. ALL PLANT MATERIAL TO BE WASHED RIVER AGGREGATE AS NECESSARY TO 30" DEPTH.
6. ALL PLANT MATERIAL TO BE WASHED RIVER AGGREGATE AS NECESSARY TO 30" DEPTH.
7. ALL PLANT MATERIAL TO BE WASHED RIVER AGGREGATE AS NECESSARY TO 30" DEPTH.
8. ALL PLANT MATERIAL TO BE WASHED RIVER AGGREGATE AS NECESSARY TO 30" DEPTH.
9. ALL PLANT MATERIAL TO BE WASHED RIVER AGGREGATE AS NECESSARY TO 30" DEPTH.
10. ALL PLANT MATERIAL TO BE WASHED RIVER AGGREGATE AS NECESSARY TO 30" DEPTH.

legal description

LEGAL DESCRIPTION:
1. ALL PLANT MATERIAL TO BE WASHED RIVER AGGREGATE AS NECESSARY TO 30" DEPTH.
2. ALL PLANT MATERIAL TO BE WASHED RIVER AGGREGATE AS NECESSARY TO 30" DEPTH.
3. ALL PLANT MATERIAL TO BE WASHED RIVER AGGREGATE AS NECESSARY TO 30" DEPTH.
4. ALL PLANT MATERIAL TO BE WASHED RIVER AGGREGATE AS NECESSARY TO 30" DEPTH.
5. ALL PLANT MATERIAL TO BE WASHED RIVER AGGREGATE AS NECESSARY TO 30" DEPTH.
6. ALL PLANT MATERIAL TO BE WASHED RIVER AGGREGATE AS NECESSARY TO 30" DEPTH.
7. ALL PLANT MATERIAL TO BE WASHED RIVER AGGREGATE AS NECESSARY TO 30" DEPTH.
8. ALL PLANT MATERIAL TO BE WASHED RIVER AGGREGATE AS NECESSARY TO 30" DEPTH.
9. ALL PLANT MATERIAL TO BE WASHED RIVER AGGREGATE AS NECESSARY TO 30" DEPTH.
10. ALL PLANT MATERIAL TO BE WASHED RIVER AGGREGATE AS NECESSARY TO 30" DEPTH.