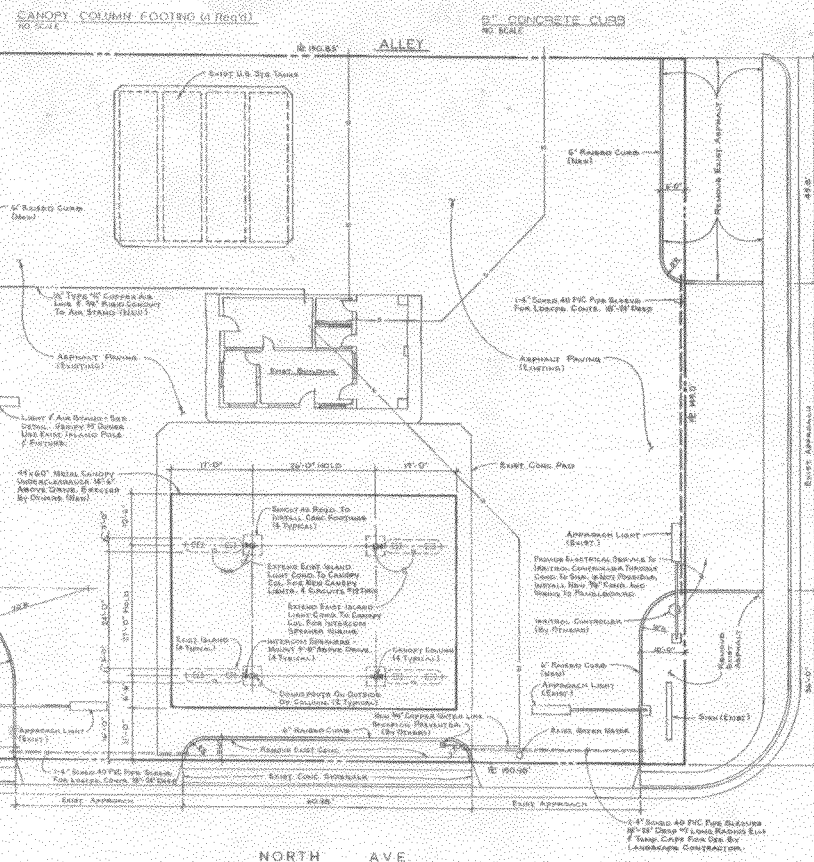
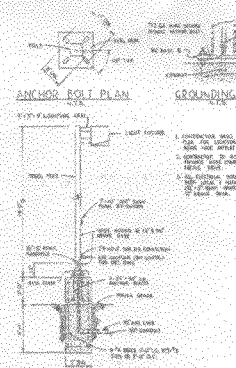
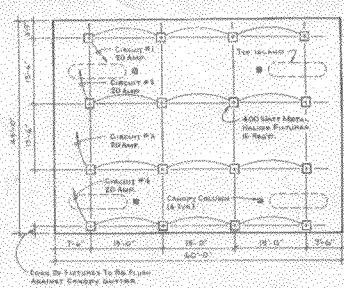
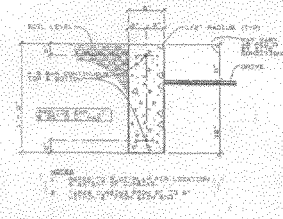
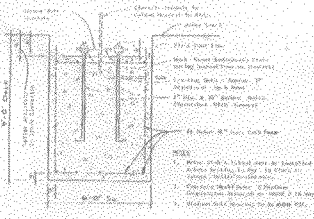


Table of Contents

File 1989-0035

Name: Vickers - 1015 North Avenue - Preliminary Plan for Landscape/Addition

	S c a n n e d	<p>A few items are denoted with an asterisk (*), which means they are to be scanned for permanent record on the in some instances, not all entries designated to be scanned by the department are present in the file. There are also documents specific to certain files, not found on the standard list. For this reason, a checklist has been provided.</p> <p>Remaining items, (not selected for scanning), will be marked present on the checklist. This index can serve as a quick guide for the contents of each file.</p> <p>Files denoted with (**) are to be located using the ISYS Query System. Planning Clearance will need to be typed in full, as well as other entries such as Ordinances, Resolutions, Board of Appeals, and etc.</p>
X	X	Table of Contents
X		Review Sheet Summary
		Application Form
		Review Sheets
		Receipts for fees paid for anything
		*Submittal checklist
		*General project report
		Reduced copy of final plans or drawings
		Reduction of assessor's map.
		Evidence of title, deeds, easements
		*Mailing list to adjacent property owners
		Public notice cards
		Record of certified mail
		Legal description
		Appraisal of raw land
		Reduction of any maps - final copy
		*Final reports for drainage and soils (geotechnical reports)
		Other bound or non-bound reports
		Traffic studies
		*Petitioner's response to comments
		*Staff Reports
		*Planning Commission staff report and exhibits
		*City Council staff report and exhibits
		*Summary sheet of final conditions
		*Letters and correspondence dated after the date of final approval (pertaining to change in conditions or expiration date)
<u>DOCUMENTS SPECIFIC TO THIS DEVELOPMENT FILE:</u>		
X	X	Planning Clearance - **
X		Memo from Don Newton to Kathy Portner re: revocable permit will be required for the landscaping in the ROW - 6/21/89
X		Letter from Tim Woodmansee to David Seagraves, Regional Operations Manager re: originals to be signed - Resolution, Revocable Permit and Agreement - 9/19/89
X	X	Canopy Plan
X		Landscape Plan
X	X	Approved Canopy Plan (to be scanned)
X	X	Resolution No. 46-89 - **
X	X	Revocable Permit - ** - City Council Minutes - 10/04/89
X	X	Agreement - ** - City Council Minutes - 10/4/89



CANOPY LIGHTING LAYOUT
SCALE: 1/8" = 1'-0"

- NOTES:**
1. The following outline is a representation of the work to be done in order to install the canopy lighting system. It is not intended to limit the work required to complete the project.
 2. Install canopy lighting fixtures as furnished by Total Petroleum, Inc.
 3. Use existing electrical conduit, if available, for canopy lighting fixtures. Otherwise, install separate conduit as needed.
 4. Anchor bolts shall be spaced 48" on center. Minimum anchor bolt size shall be 1/2" diameter. Maximum anchor bolt length shall be 12" on center.
 5. Install lighting and existing wiring fixtures and cable with air outlet as shown. Install all wiring in conduit.
 6. Anchor bolts in concrete shall be installed with epoxy.
 7. Luminaires shall be installed as shown.
 8. Install electrical conduit as shown.
 9. Install electrical conduit from building to canopy.
 10. Install electrical conduit from canopy to building.
 11. Install electrical conduit from canopy to building.

CONNECTIONS

1. Connections shall provide an airtight, weather-tight seal between the canopy and the building.
2. Connections shall provide an airtight, weather-tight seal between the canopy and the building.

CONNECTIONS

1. Connections shall provide an airtight, weather-tight seal between the canopy and the building.
2. Connections shall provide an airtight, weather-tight seal between the canopy and the building.

CONNECTIONS

1. Connections shall provide an airtight, weather-tight seal between the canopy and the building.
2. Connections shall provide an airtight, weather-tight seal between the canopy and the building.

CONNECTIONS

1. Connections shall provide an airtight, weather-tight seal between the canopy and the building.
2. Connections shall provide an airtight, weather-tight seal between the canopy and the building.

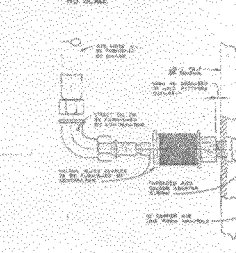
CONNECTIONS

1. Connections shall provide an airtight, weather-tight seal between the canopy and the building.
2. Connections shall provide an airtight, weather-tight seal between the canopy and the building.

CONNECTIONS

1. Connections shall provide an airtight, weather-tight seal between the canopy and the building.
2. Connections shall provide an airtight, weather-tight seal between the canopy and the building.

LIGHT & AIR STAND
NO SCALE



AIR COUPLER
NO SCALE



DATE:	NO. SHEETS:
TOTAL	
Total Petroleum, Inc.	
TOTAL	
CANOPY PLANT NORTH GRAND JUNCTION	
DESIGNED BY:	DRAWN BY:
CHECKED BY:	DATE:
APPROVED BY:	DATE:
T.P. INC.	



NORTH

