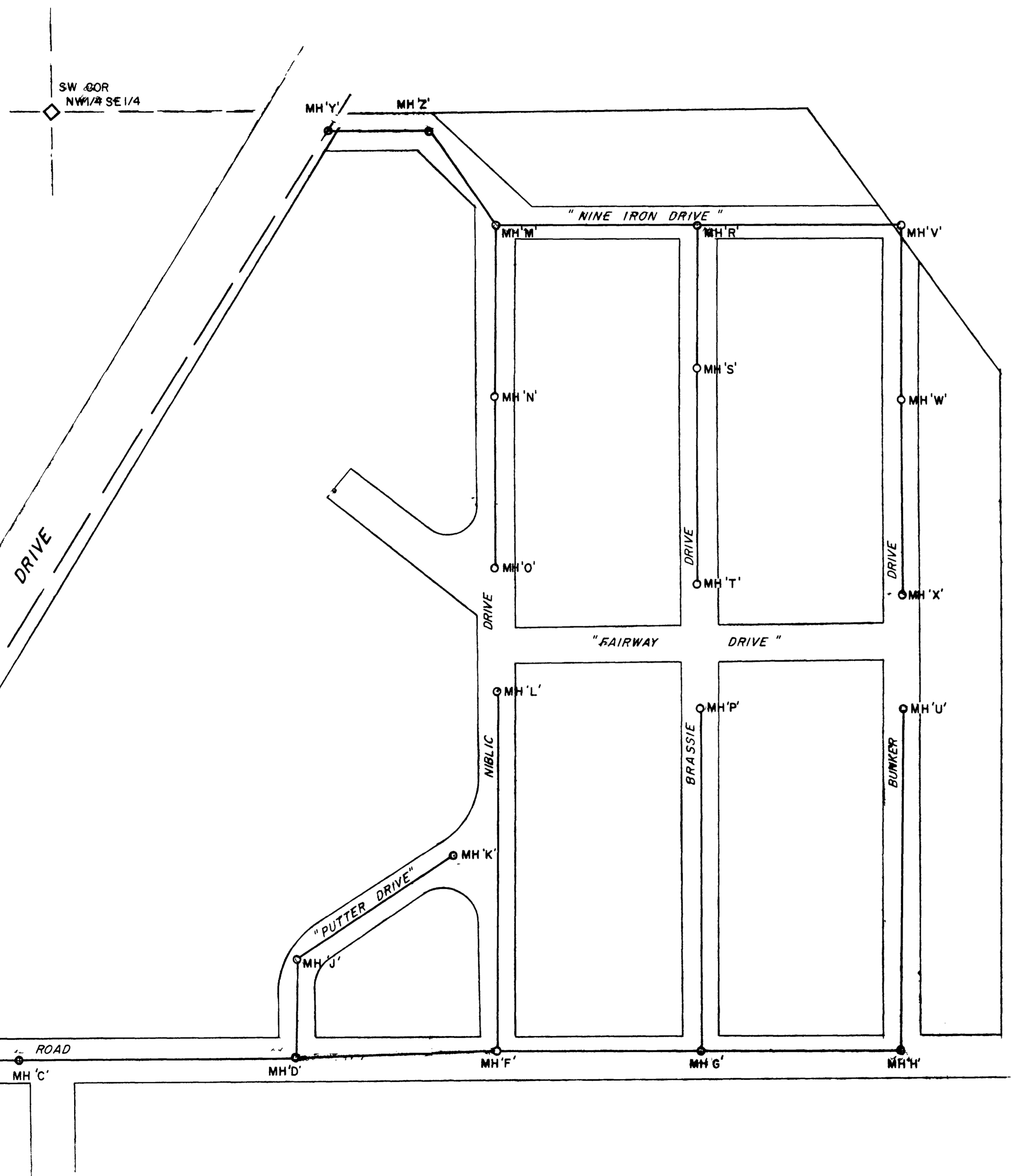


**SANITARY  
SEWER  
DISTRICT  
32-74**

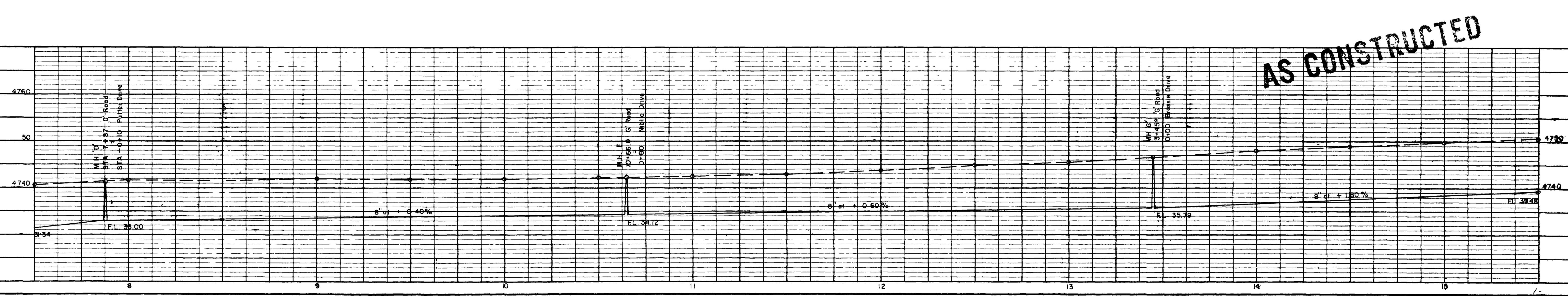
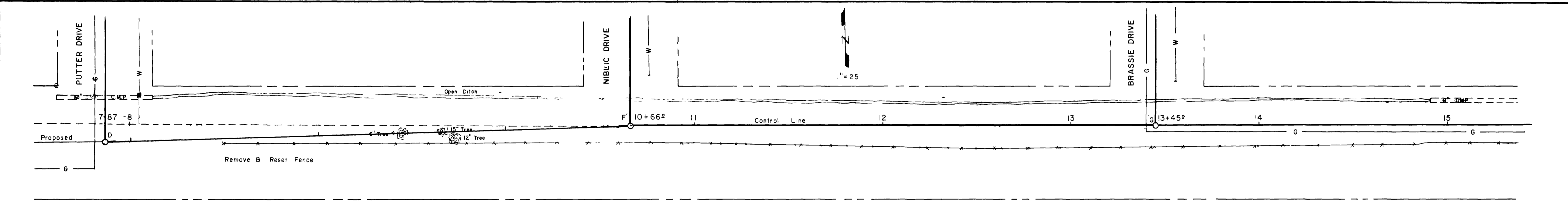
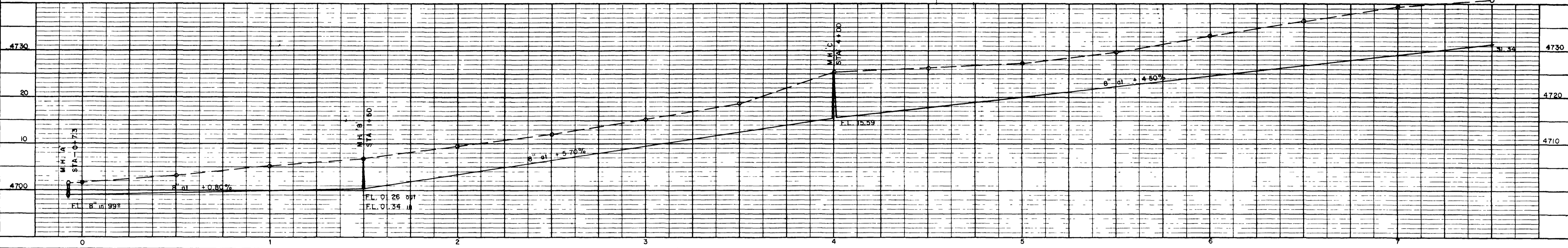
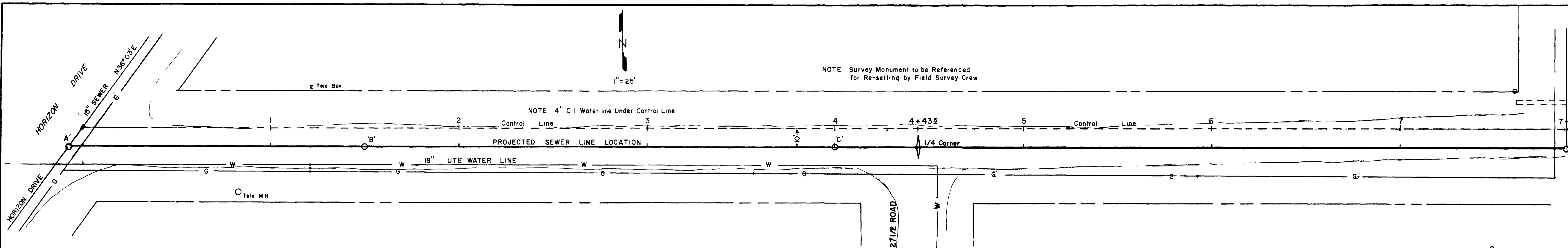
MAP OF  
GRAND JUNCTION  
AND VICINITY  
MESA COUNTY,  
COLORADO  
COMPILED FROM OFFICIAL RECORDS  
D C HICKMAN CITY ENGINEER  
DRAWN JAN 1969  
BY  
K. A. KERNEY

APPROVED FOR  
CITY OF GRAND JUNCTION  
RESOLUTION 10753  
*Rodgero Esunape*  
RODGERO ESUNAPE 10753  
CITY ENGINEER



SHEET N°	INDEX TO PLANS
1	GENERAL PLOT PLAN
2	'G' ROAD HORIZON DRIVE TO BRASSIE DRIVE
3	'G' ROAD BRASSIE DRIVE TO BUNKER DRIVE
4	NIBLIC DRIVE 'G' ROAD TO FAIRWAY DRIVE
	" " NINE IRON DRIVE TO FAIRWAY DRIVE
5	BRASSIE DRIVE 'G' ROAD TO FAIRWAY DRIVE
	" " NINE IRON DRIVE TO FAIRWAY DRIVE
6	BUNKER DRIVE 'G' ROAD TO FAIRWAY DRIVE
	" " NINE IRON DRIVE TO FAIRWAY DRIVE
7	NINE IRON DRIVE NIBLIC DRIVE TO BUNKER DRIVE
	OUTFALL LINE FROM NINE IRON DRIVE TO HORIZON DRIVE
8	MANHOLES AND MISC DETAILS

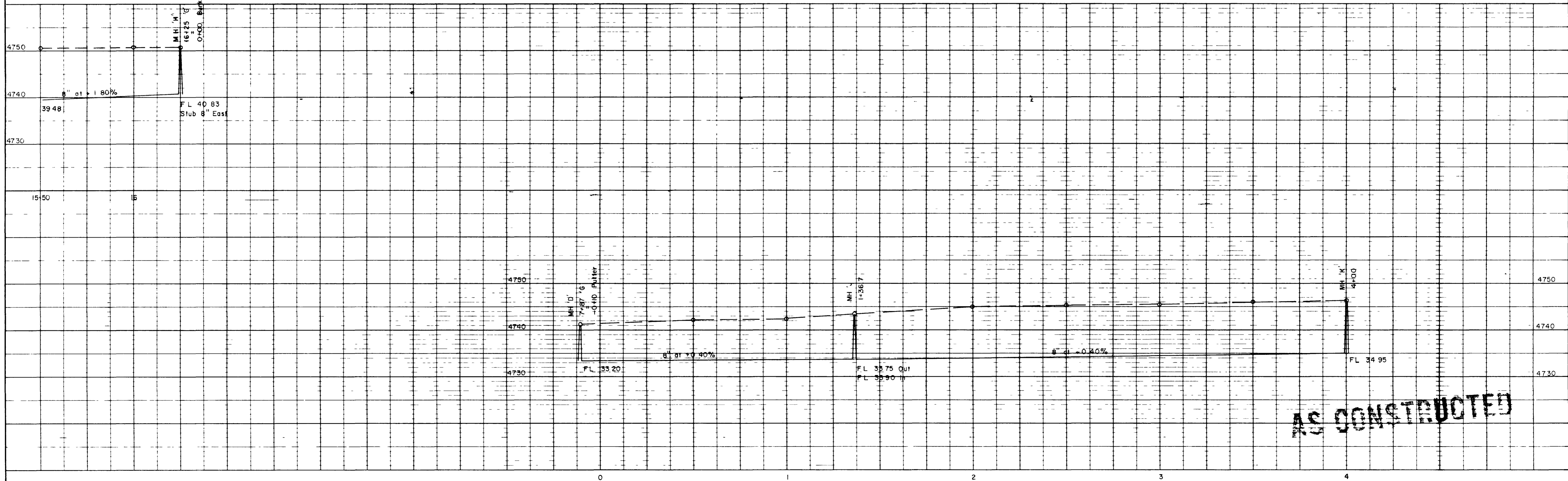
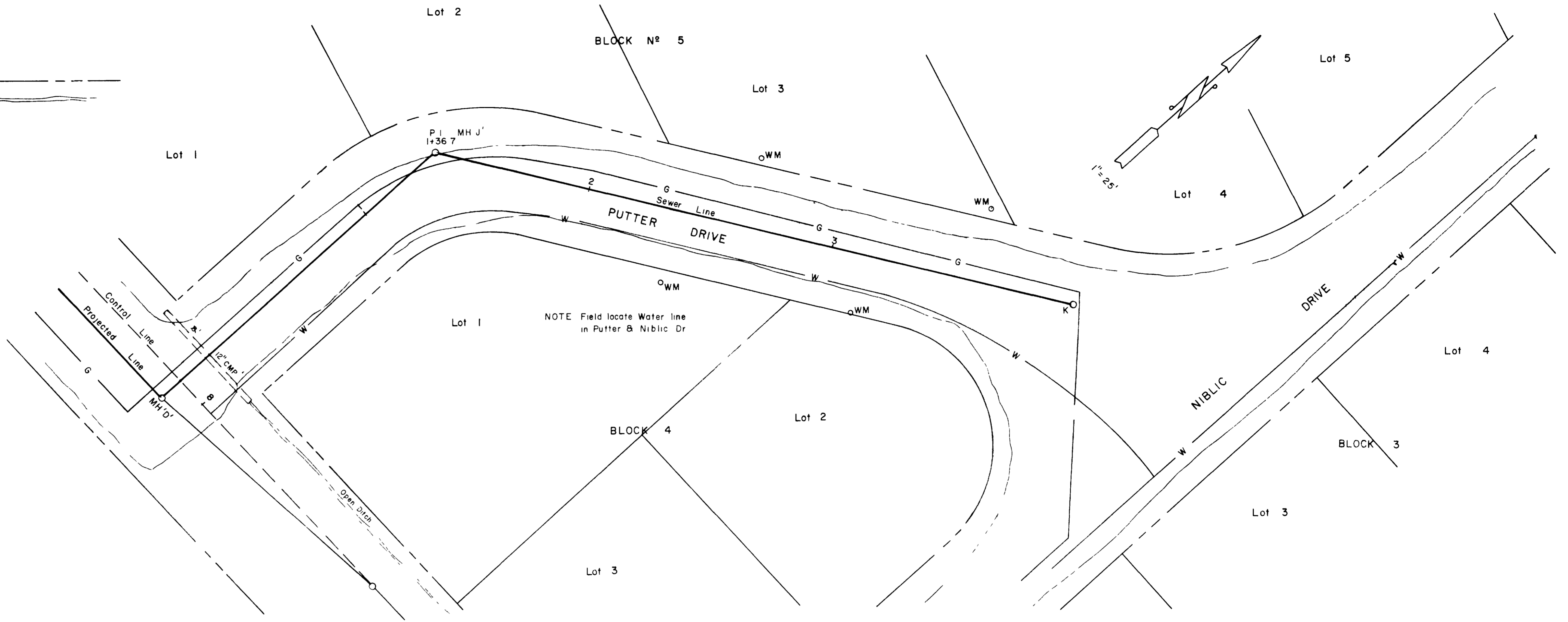
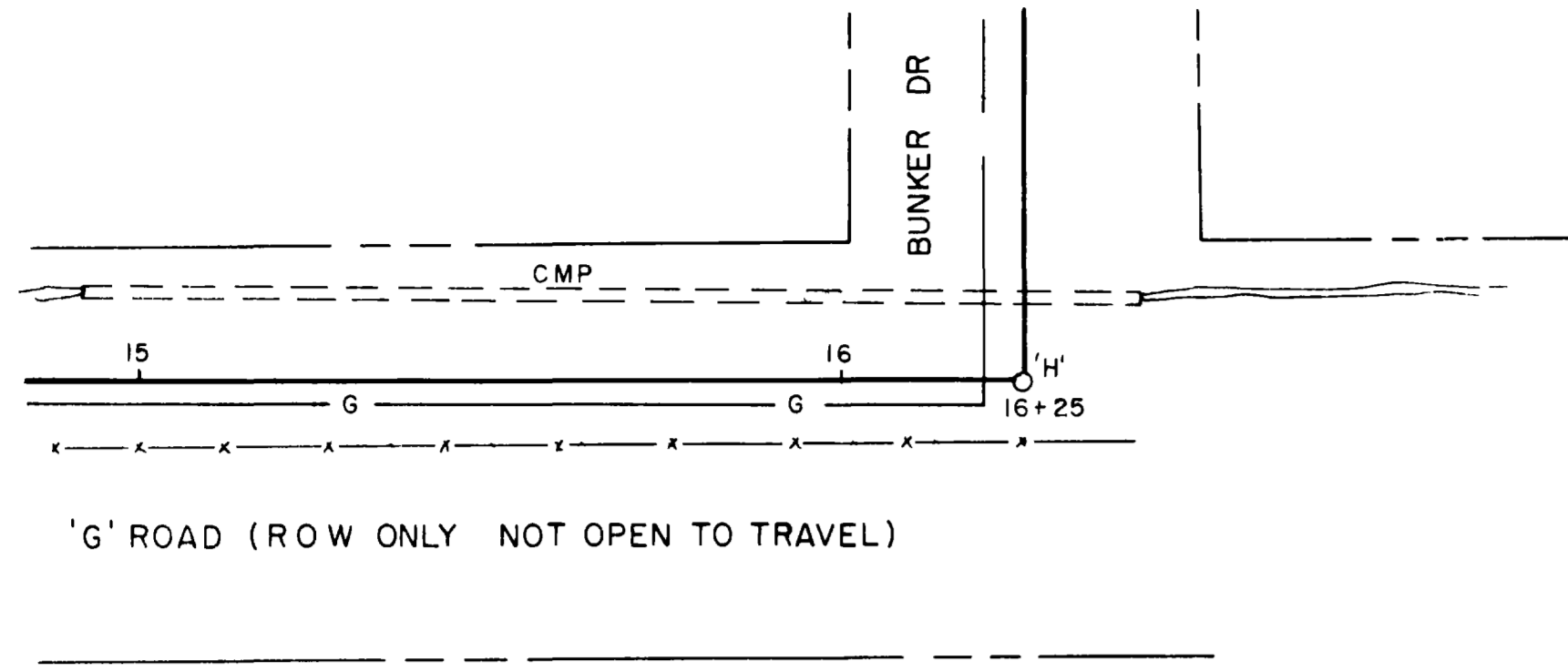
**AS CONSTRUCTED**



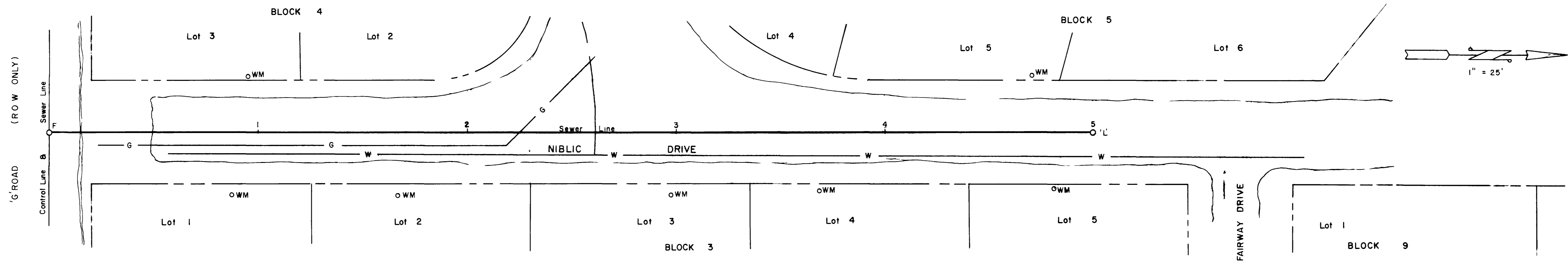
AS CONSTRUCTED

PLAN NOTE BOOK No. 309

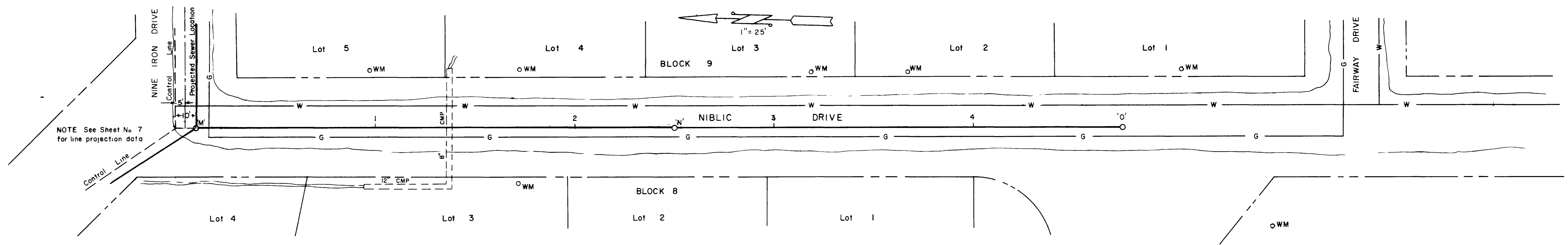
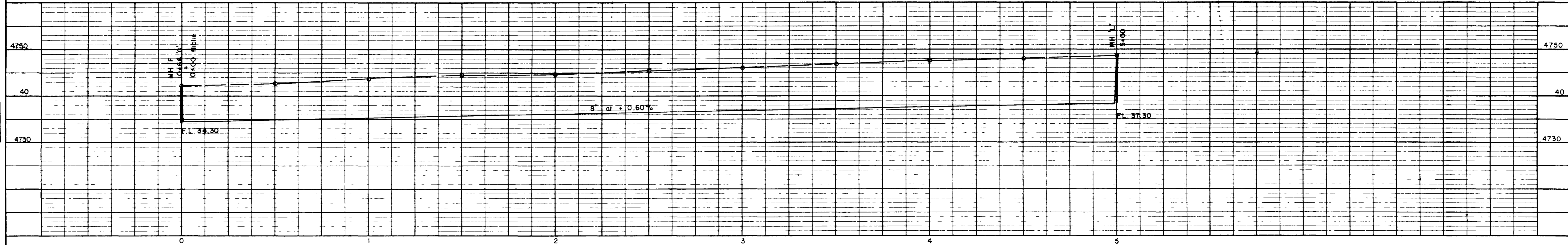
PROFILE NOTE BOOK No. 309



**AS CONSTRUCTED**

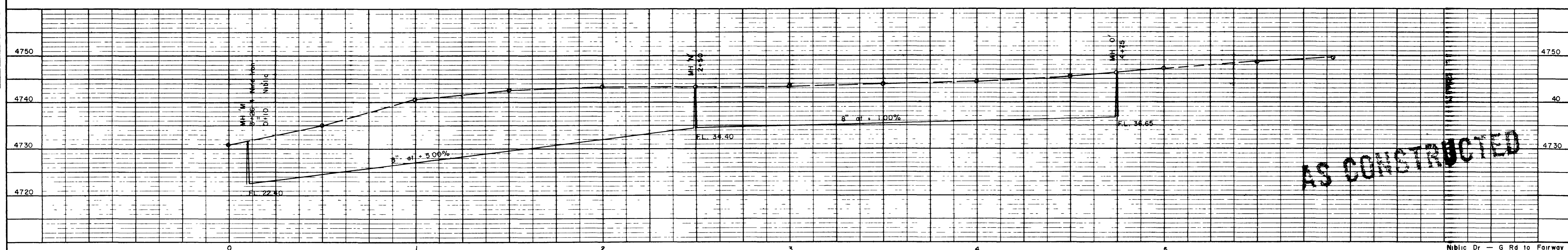


PLAN  
NOTE BOOK  
NO. 309

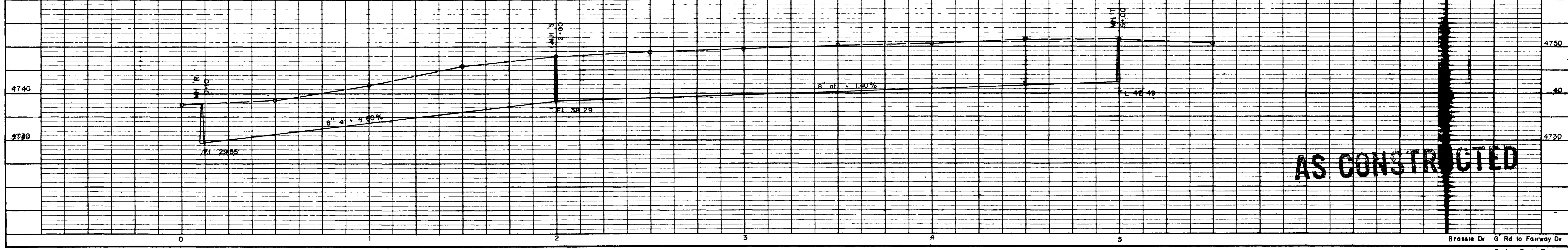
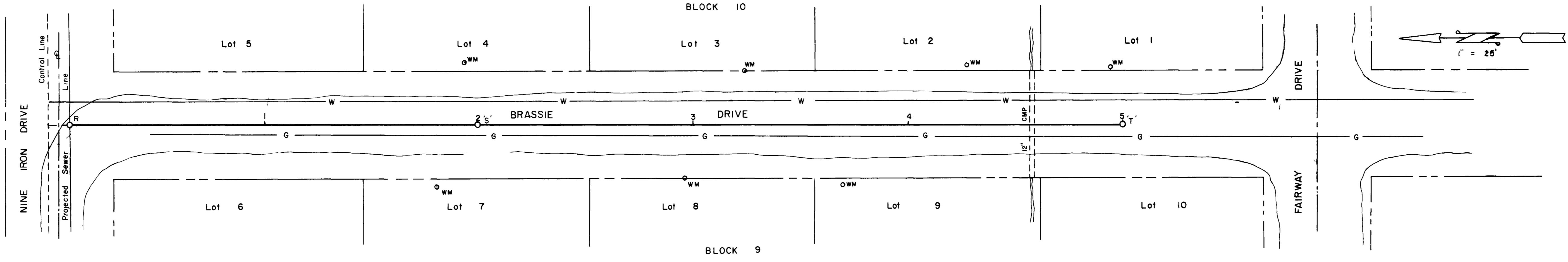
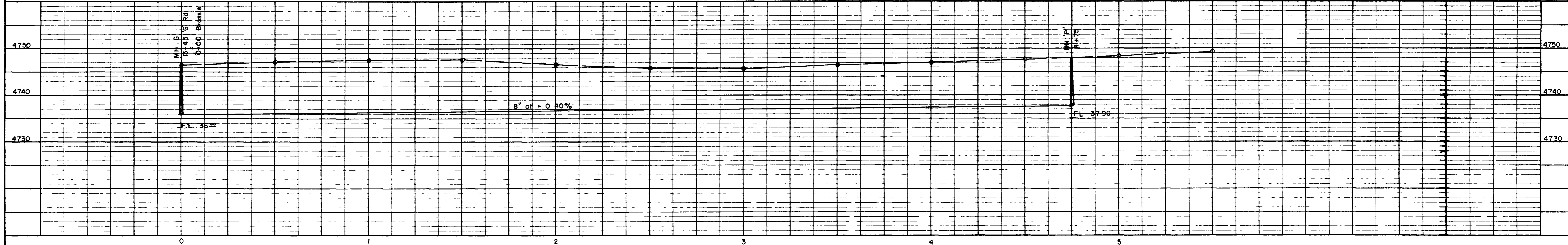
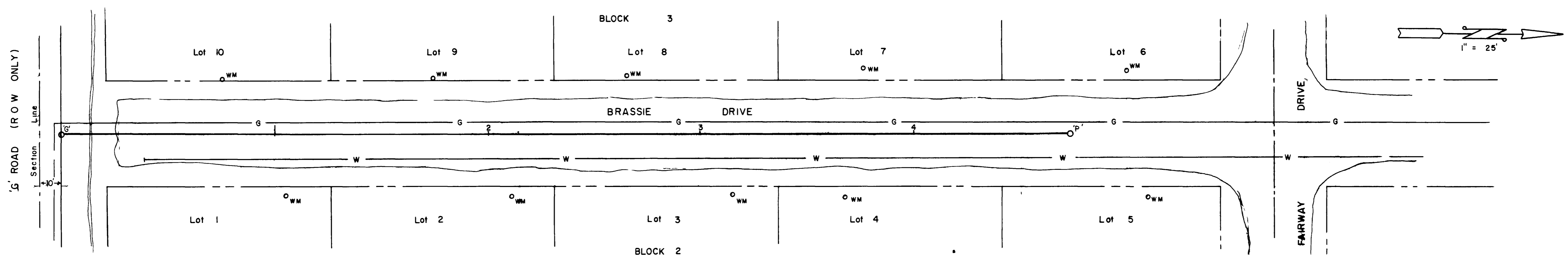


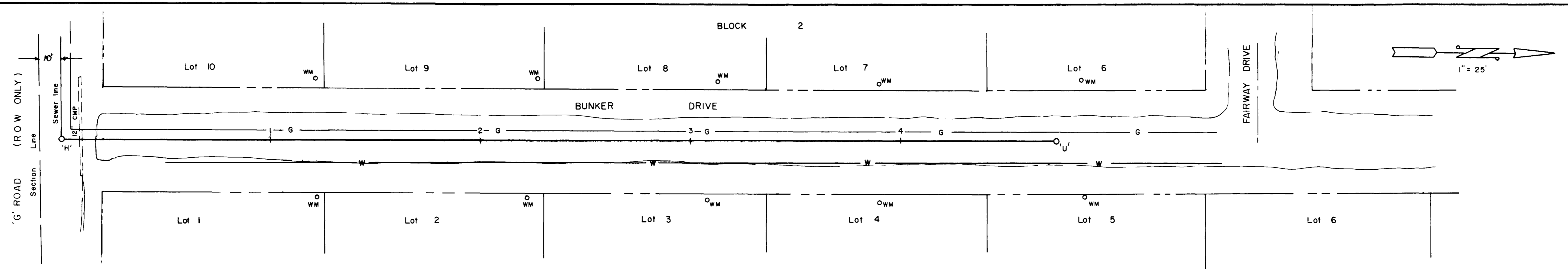
NOTE See Sheet No. 7  
for line projection data

PROFILE  
NOTE BOOK  
NO. 309

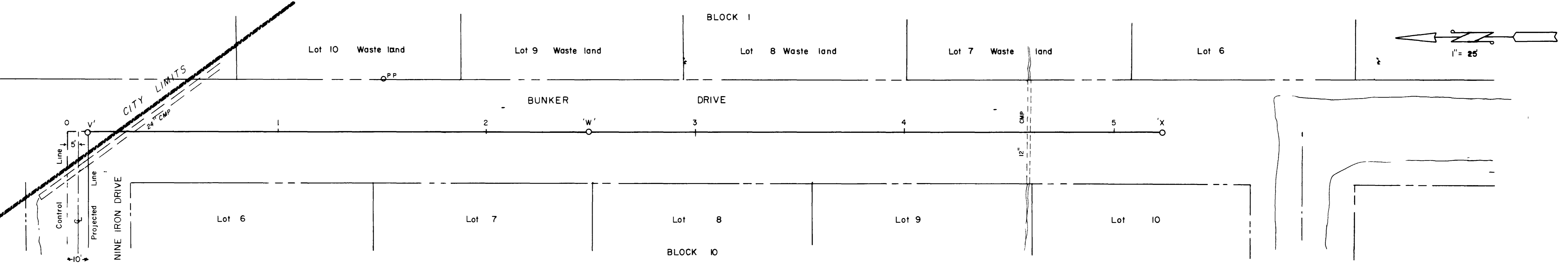
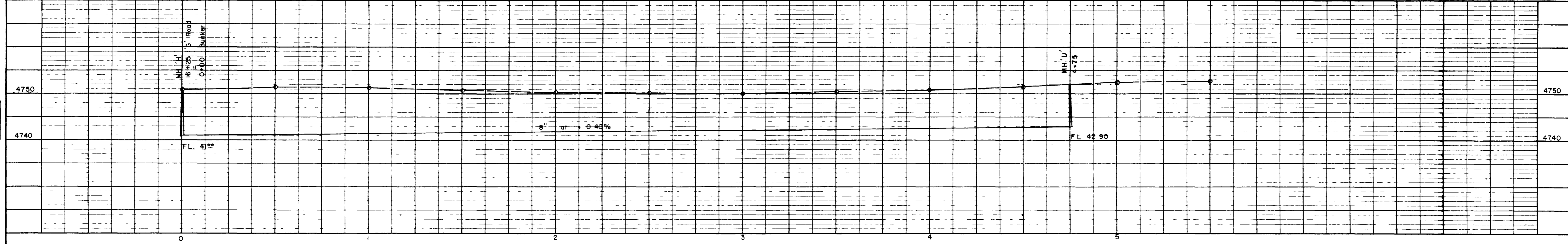


AS CONSTRUCTED

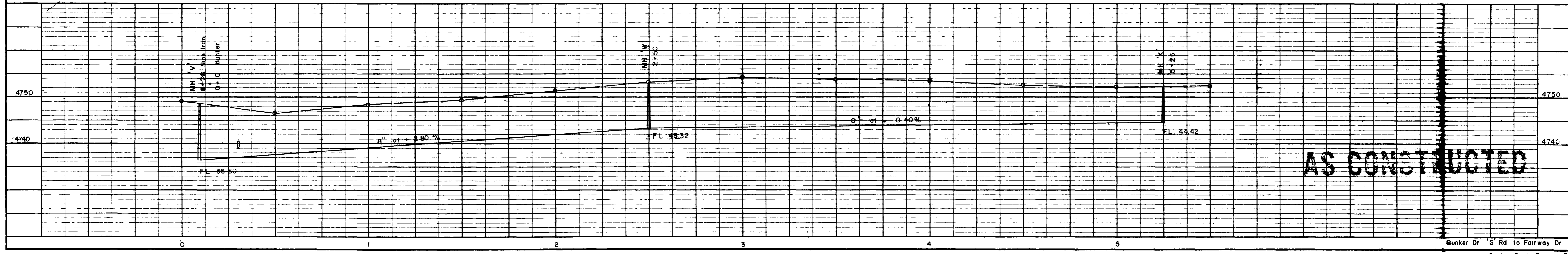




PLAN  
NOTE BOOK  
NO. 309

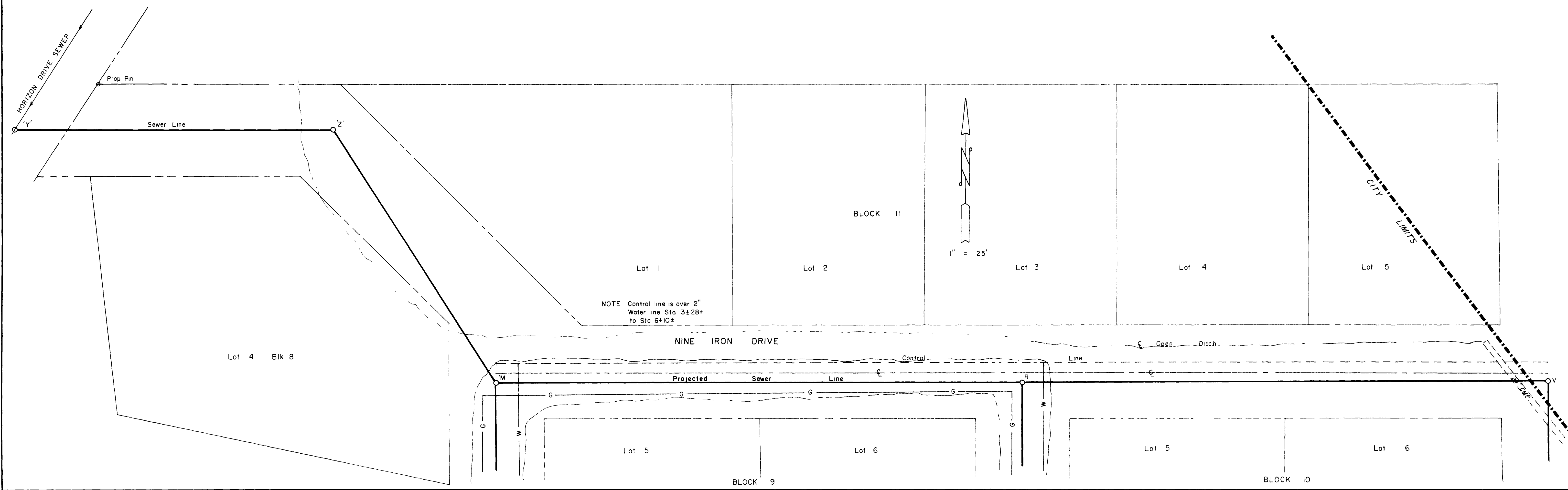


PROFILE  
NOTE BOOK  
NO. 309

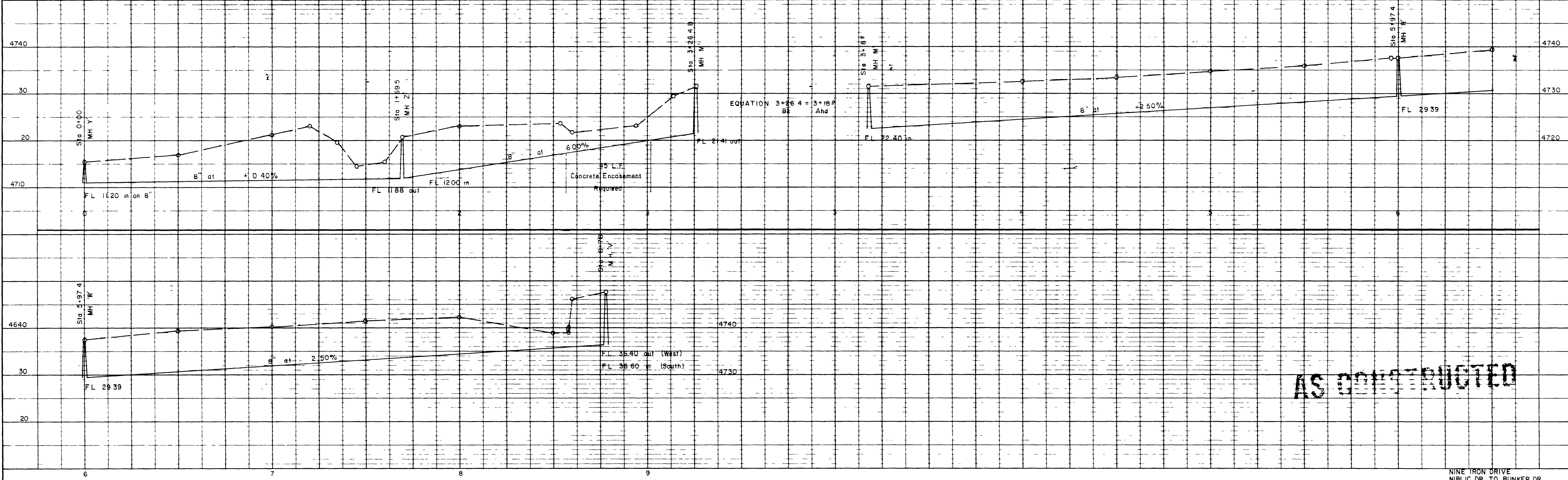


**AS CONSTRUCTED**

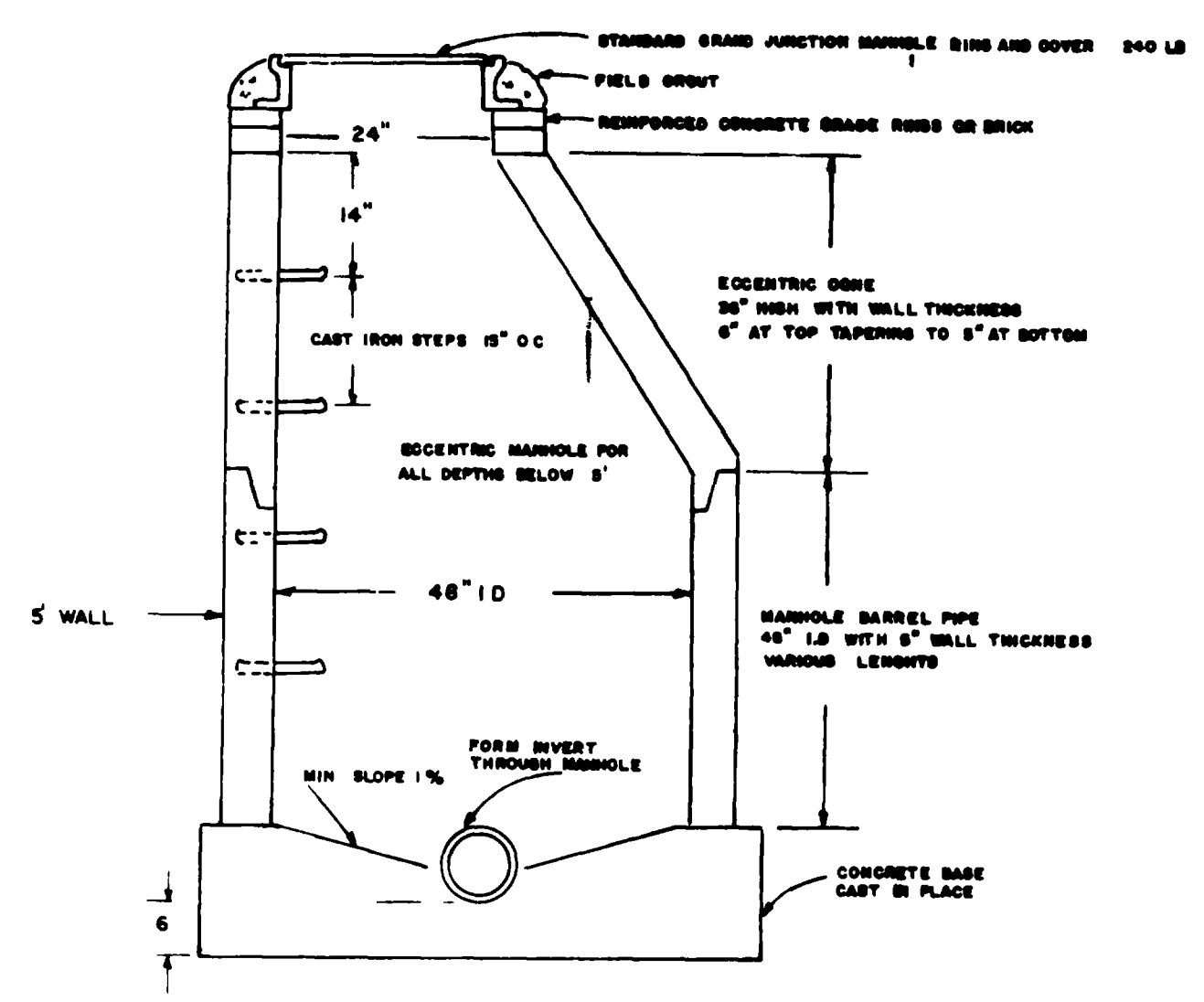
PLAN  
NOTE BOOK  
No. 302



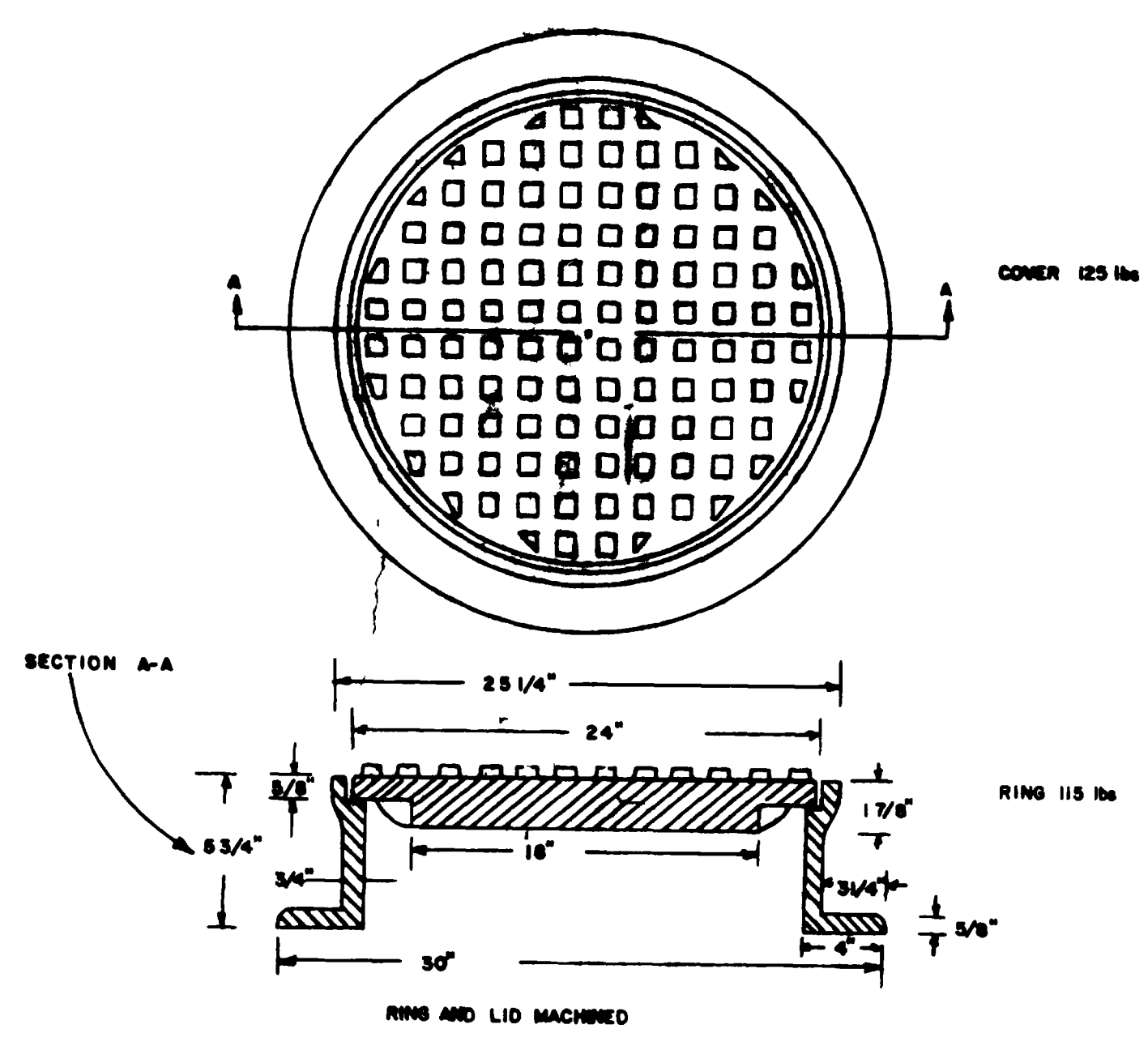
PROFILE  
NOTE BOOK  
No. 302



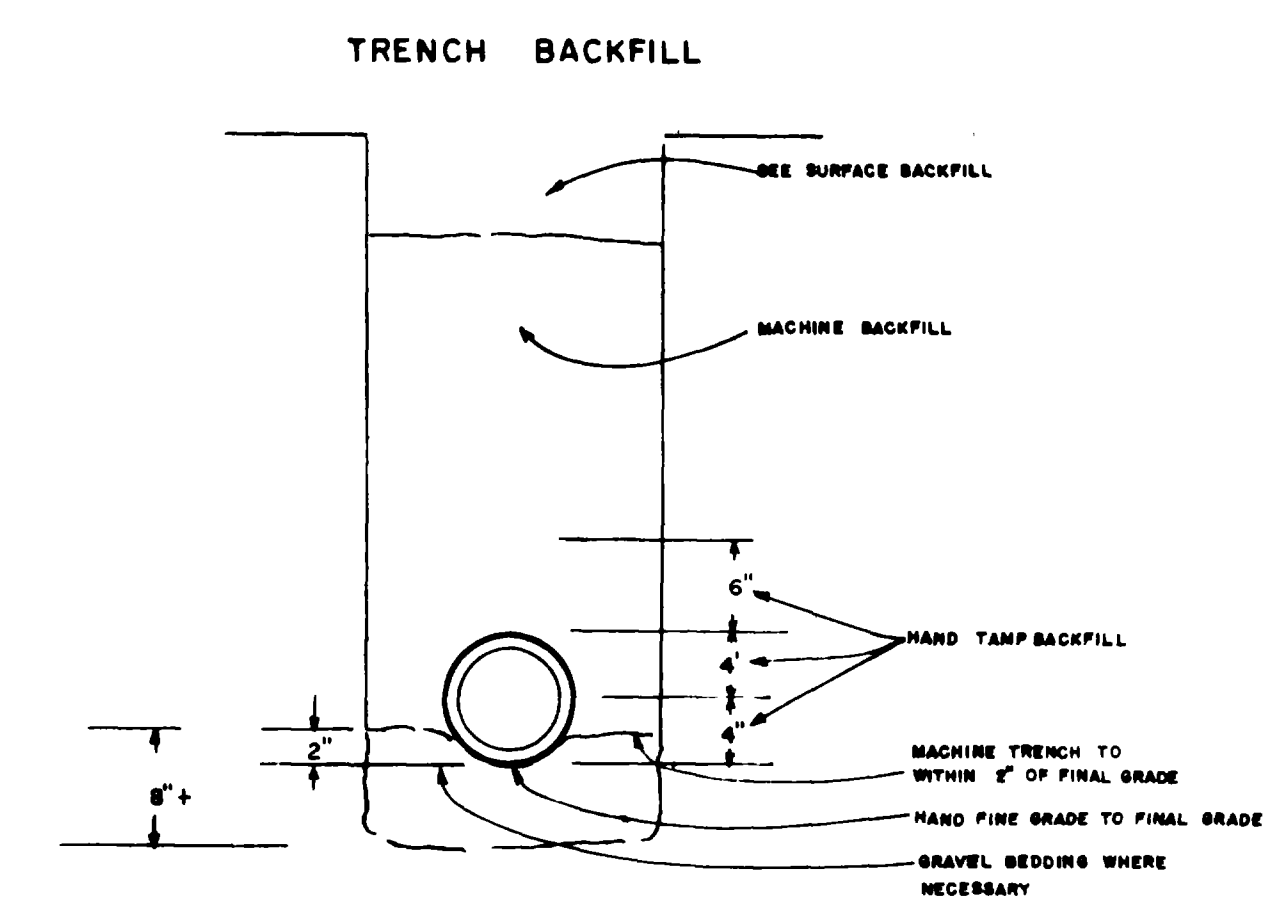
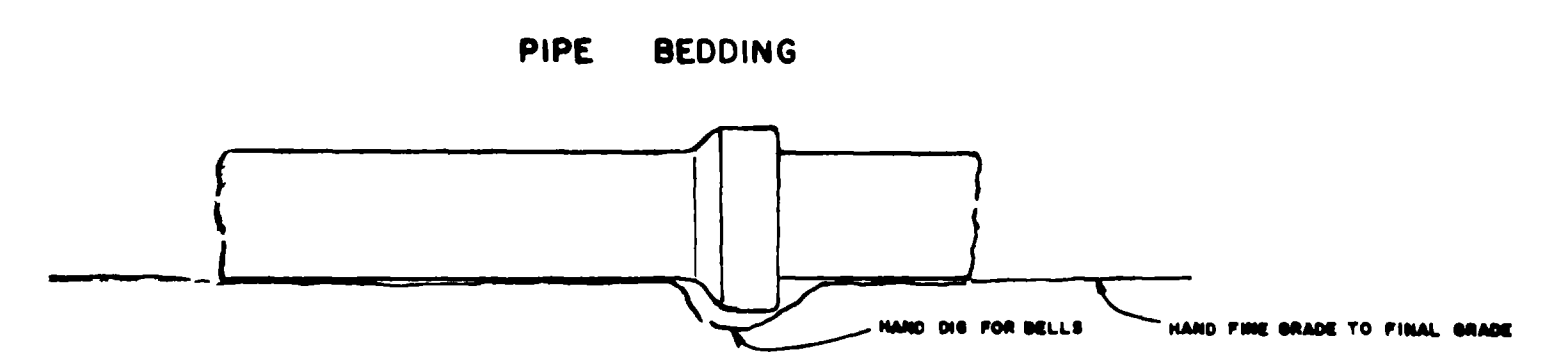




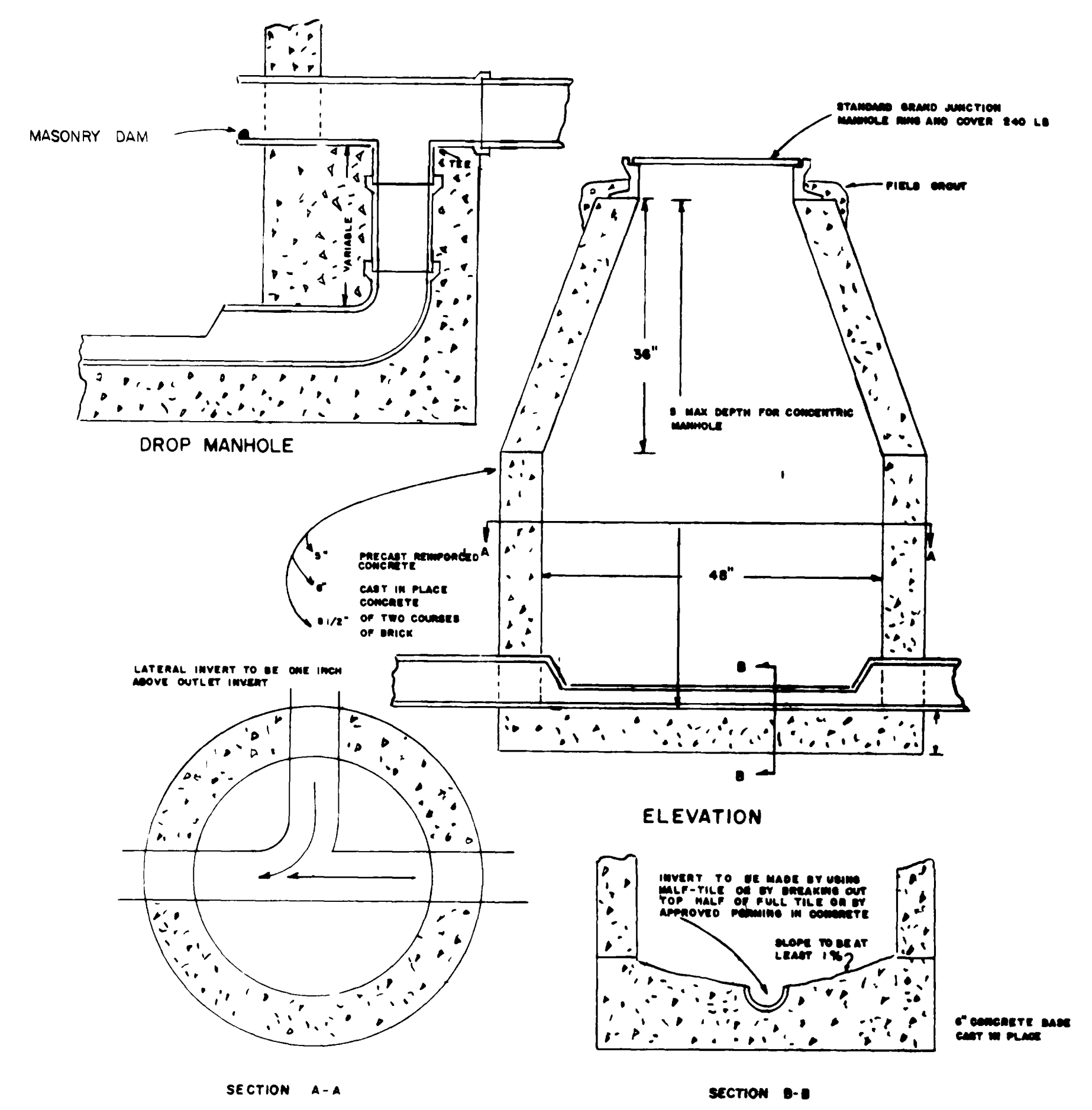
STANDARD SANITARY SEWER MANHOLE



STANDARD GRAND JUNCTION RING & COVER  
WT 240 lbs  
(or approved equal)



NOTE COMPACTION BY USE OF WATER IS APPROVED AND RECOMMENDED IN LOCATION APPROVED BY ENGINEER



SURFACE BACKFILL

