

DESIGNATION	LOCATION	SHEET NO
MAIN LINE	G ROAD	1
A LINE	26 1/2 ROAD	9
B LINE	PRIVATE	8
C LINE	JASMINE LANE	3
C-3 LINE	CENTRAL DRIVE	5
D LINE	ASH DRIVE	8
D-2 LINE	HICKORY DRIVE	6
E LINE	HEMLOCK DRIVE	6
D-2 LINE	ASH DRIVE	7
E LINE	IVANHOE WAY	2
FORCE MAIN	B G ROAD	
F LINE	IVY PLACE	4
F-1 LINE	JASMINE LANE	3
G LINE	CENTRAL DRIVE	10
G-1 LINE	TULIP DRIVE	10

INDEX MAP

"AS CONSTRUCTED"

WESTERN ENGINEERS, INC
PLANS FOR

**N 26 1/2 ROAD
SANITATION SYSTEM**

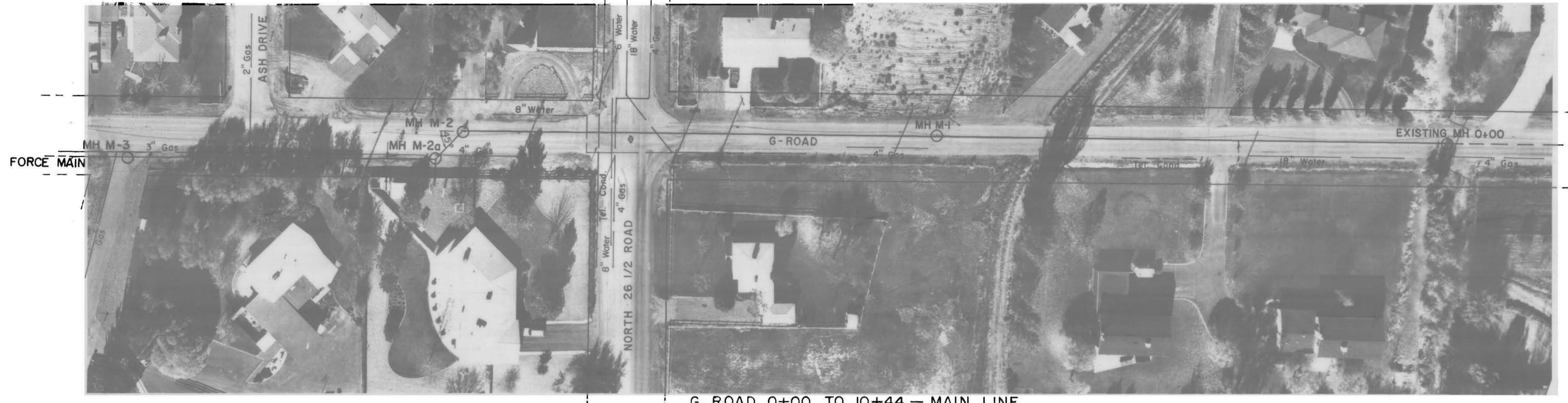
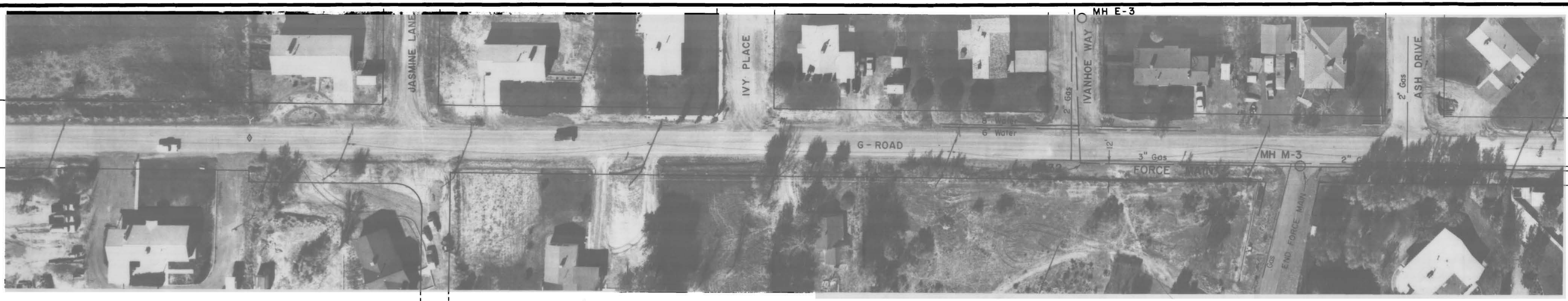
SANITARY SEWER
LIFT STATION
AND FORCE MAIN
MESA COUNTY, COLORADO

DESIGNED R. J. M.

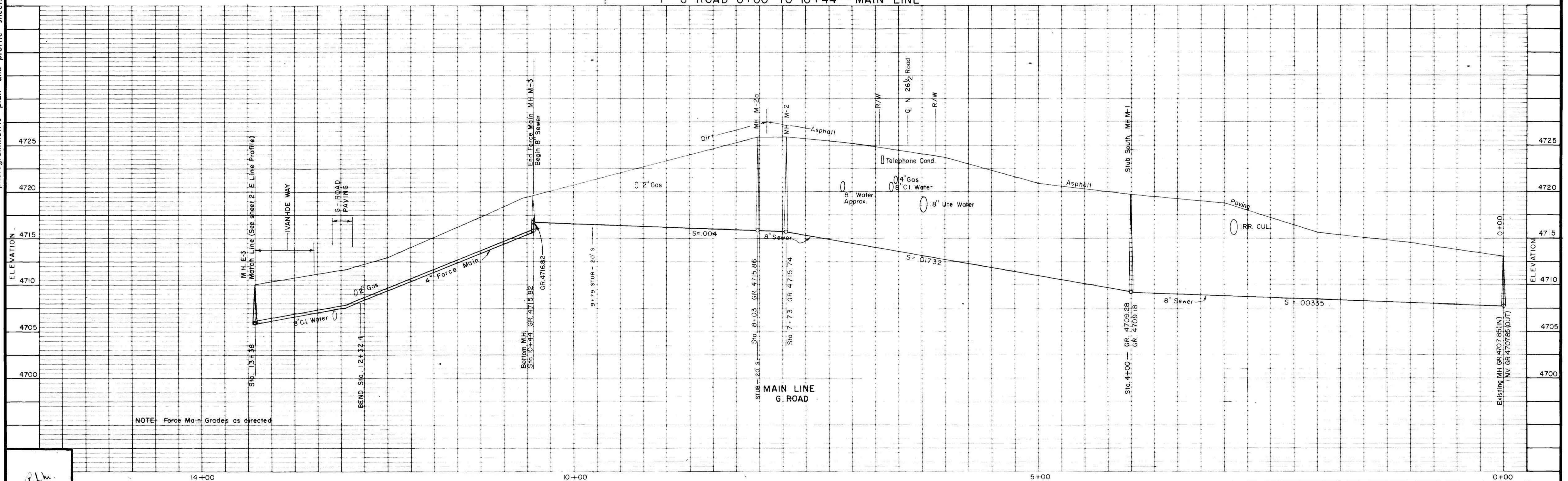
GRAND JUNCTION, COLO. DWG 1-728-1 1/9/75

Engineering plan and profile sheets prepared by LAWANA LABORATORIES INC., Loveland, Colorado.

02-105-01-AB



G ROAD 0+00 TO 10+44 - MAIN LINE



NOTE: Force Main Grades as directed

[Signature]
seal

DATE 12/18/74
 Drawn R.M. 12/15/74
 Traced R.S.
 Checked R.S.

Approved for construction
[Signature]
 ENGINEER

OWNER
 Grand Junction Colorado

WESTERN ENGINEERS INC.
 N 26 1/2 ROAD SANITATION SYSTEM
 MAIN LINE & FORCE MAIN - G ROAD
 AND IVANHOE WAY

SCALE EACH SHEET
 VERTICAL SCALE: 1" = 5'
 HORIZONTAL SCALE: 1" = 50'

Plan and Profile DWG. NO. 1-728-1
 STATION 0+00 TO 13+38
 REV. "AS CONSTRUCTED" MAY 1975

NO. OF SHEETS 12
 SHEET NO. 1

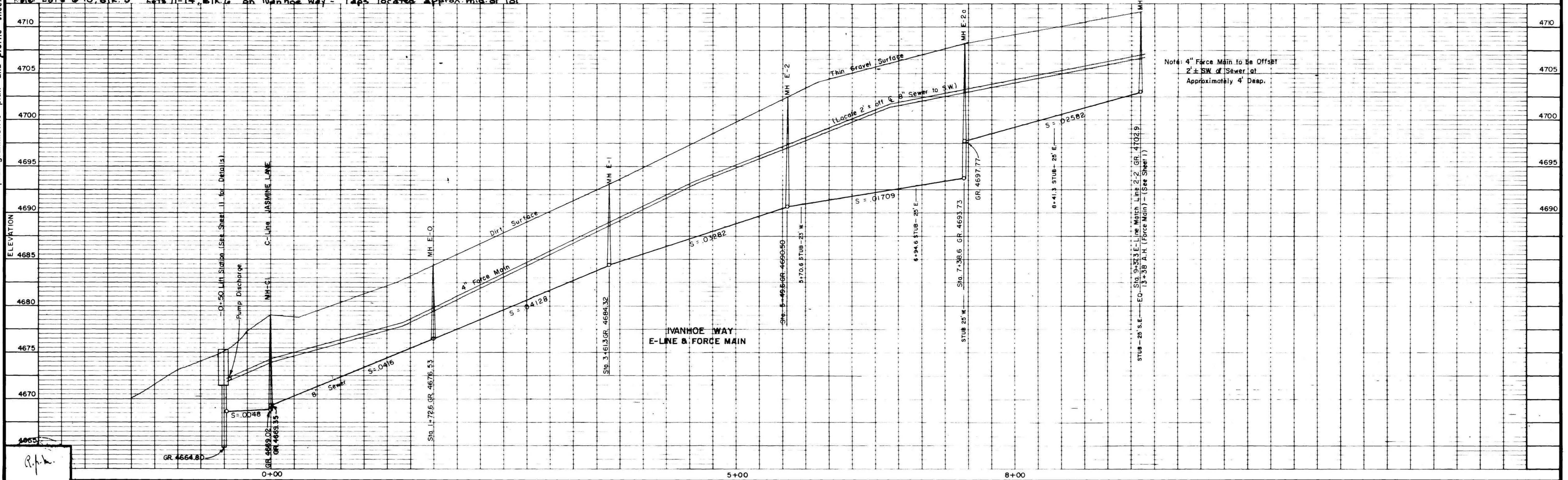
02-105-02-AB

PHOTOGRAPHIC PLAN AND PROFILE SHEETS PREPARED BY LANDMANN LABORATORIES INC. - LOVELAND, COLORADO.



IVANHOE WAY
E-LINE & FORCE MAIN

Note: Lots 6-10, Blk. 9. Lots 11-14, Blk. 6 on Ivanhoe Way - Taps located approx. mid of lot



Note: 4" Force Main to be Offset 2' ± SW of Sewer lot. Approximately 4' Deep.

R.P.H.

DATE 12/18/74
 Drawn R.J.M. 12/9/74, Rev. 11/4/75
 Traced B.J.S.
 Checked J.P.H.

Approved for construction
 [Signature]
 ENGINEER

OWNER
 Grand Junction Colorado

WESTERN ENGINEERS INC.
 N 26 1/2 ROAD SANITATION SYSTEM
 E-LINE & FORCE MAIN-IVANHOE WAY

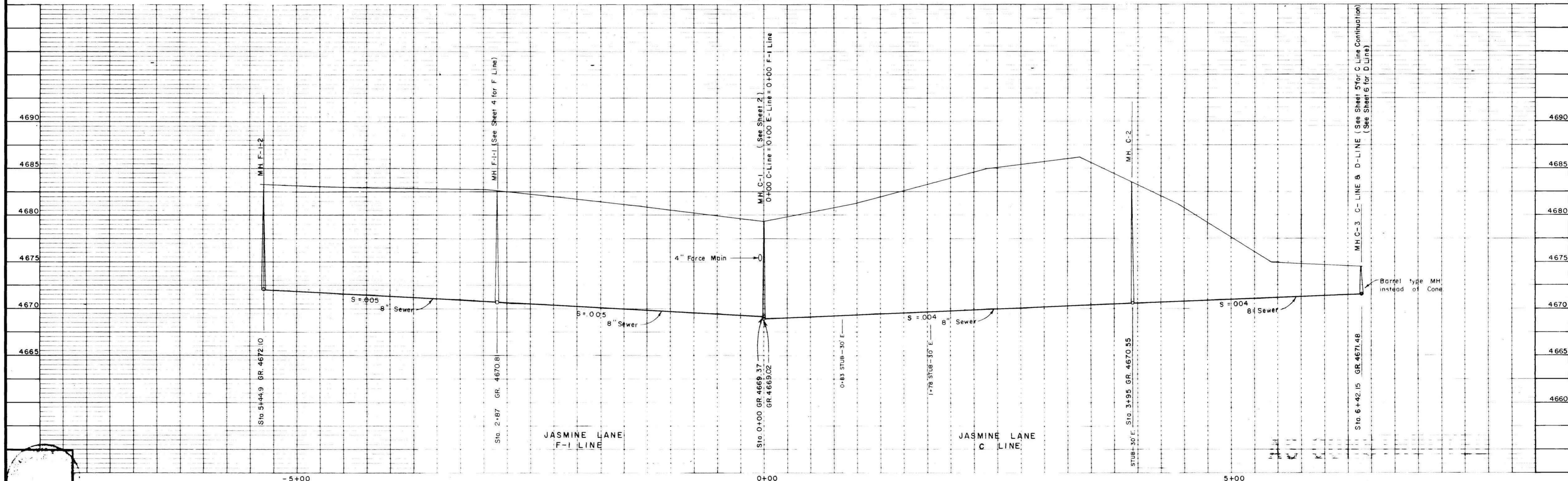
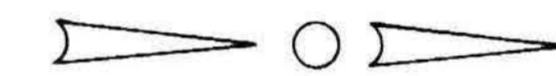
Plan and Profile
 DWG. NO. 1-728-1

STATION -0+50 TO EQ 9+37.3
 REV. 45 CONSTRUCTED 13+42 AH
 MAY 1974

NO. OF SHEETS	SHEET NO.
12	2



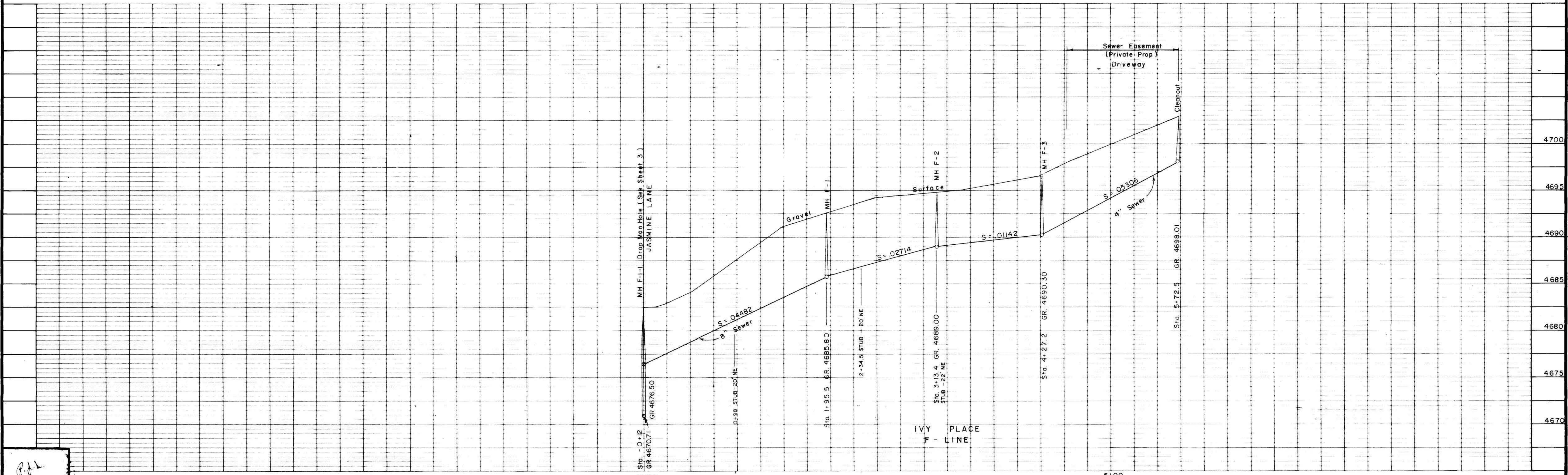
JASMINE LANE
F-1 LINE AND C-LINE



DATE 12/18/74	Drawn <u>R.J.M.</u> 12/6/74 Traced <u>G.L.A.</u> Checked <u>R.J.M.</u>	Approved for construction <u>R.J.M.</u> ENGINEER	OWNER	WESTERN ENGINEERS INC. Grand Junction Colorado	N 26 1/2 ROAD SANITATION SYSTEM F-1 LINE & C-LINE JASMINE LANE	Plan and Profile DWG. NO. 1-728-1 STATION F-1 LINE 0+00 TO 5+44.9 C-LINE 0+00 TO 6+42.15	NO. OF SHEETS 12	SHEET NO. 3
------------------	--	--	-------	---	---	---	---------------------	----------------

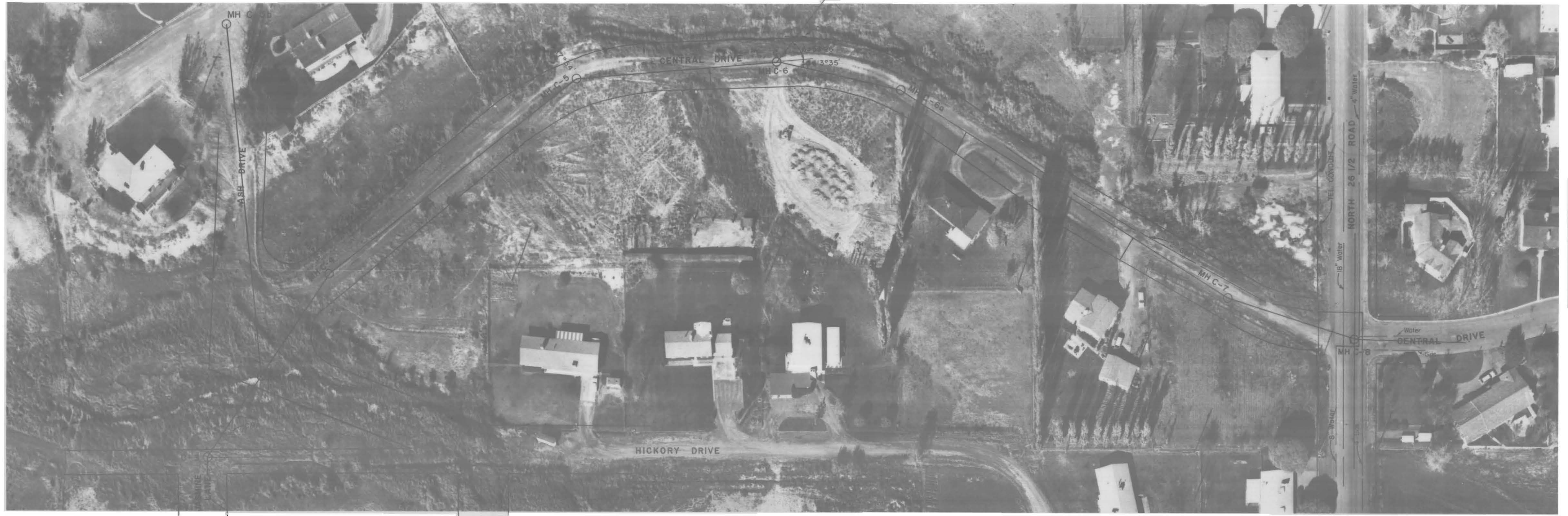


IVY PLACE
F - LINE

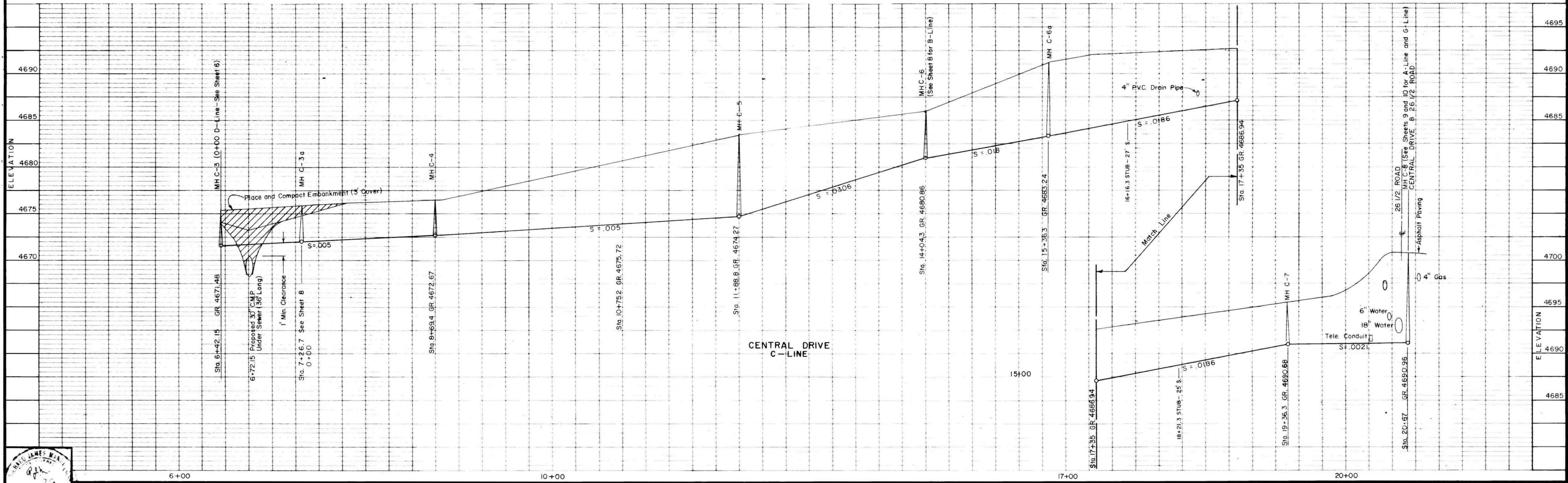


RJM

DATE 12/18/74	Drawn...RJM...12/6/74...Rev...1/5/75 Traced...G.A. Checked... <i>RJM</i>	Approved for construction <i>RJM</i> ENGINEER	OWNER	WESTERN ENGINEERS INC. Grand Junction Colorado	N 26 1/2 ROAD SANITATION SYSTEM F - LINE - IVY PLACE	Plan and Profile STATION -0+12 TO 5+72.5 <small>REV. "AS CONSTRUCTED" MAY 1975</small>	DWG. NO. 1-728-1	NO. OF SHEETS 12	SHEET NO. 4
------------------	--	---	-------	---	---	--	------------------	---------------------	----------------



CENTRAL DRIVE
C-LINE



DATE 12/18/74
 Drawn R.J.M. 12/17/74 Rev. 1/5/75
 Traced R.L.S.
 Checked D.J.H.

Approved for construction
 ENGINEER
 OWNER

WESTERN ENGINEERS INC.
 Grand Junction Colorado

N 26 1/2 ROAD SANITATION SYSTEM
 CENTRAL DRIVE - C-LINE

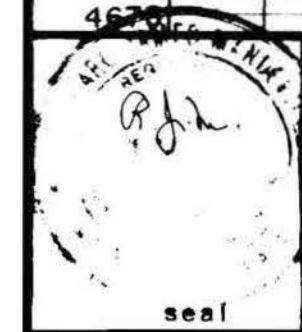
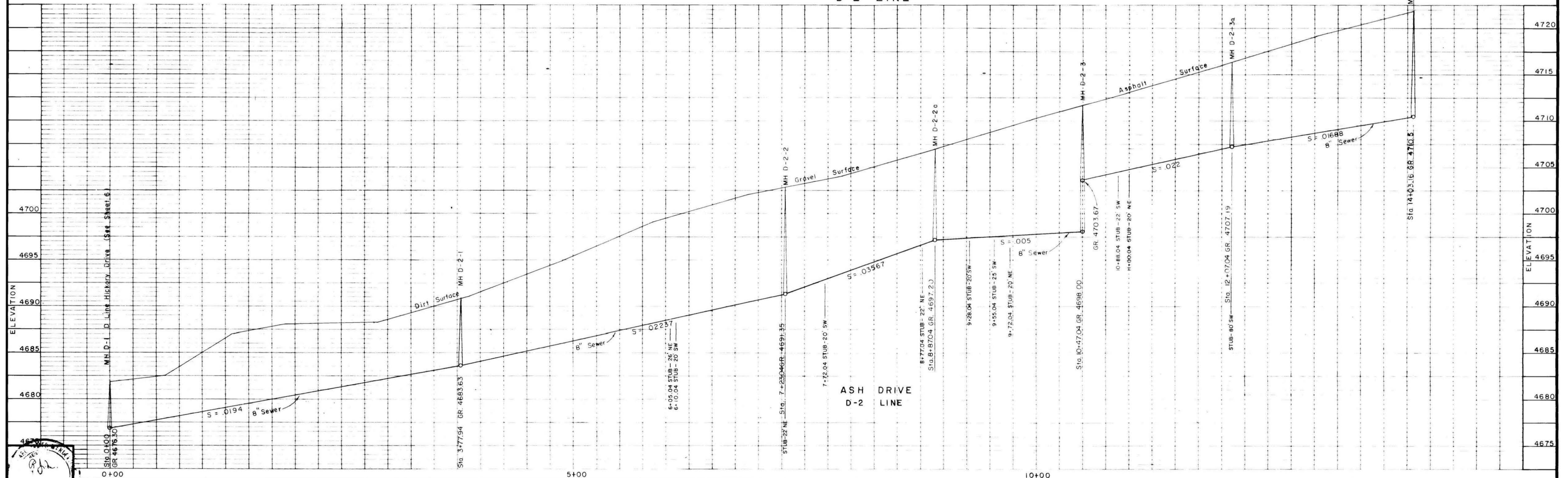
Plan and Profile
 DWG. NO. 1-728-1
 STATION 6+42 TO 20+67
 REV. AS CONSTRUCTED MAY 1985

NO. OF SHEETS	SHEET NO.
12	5

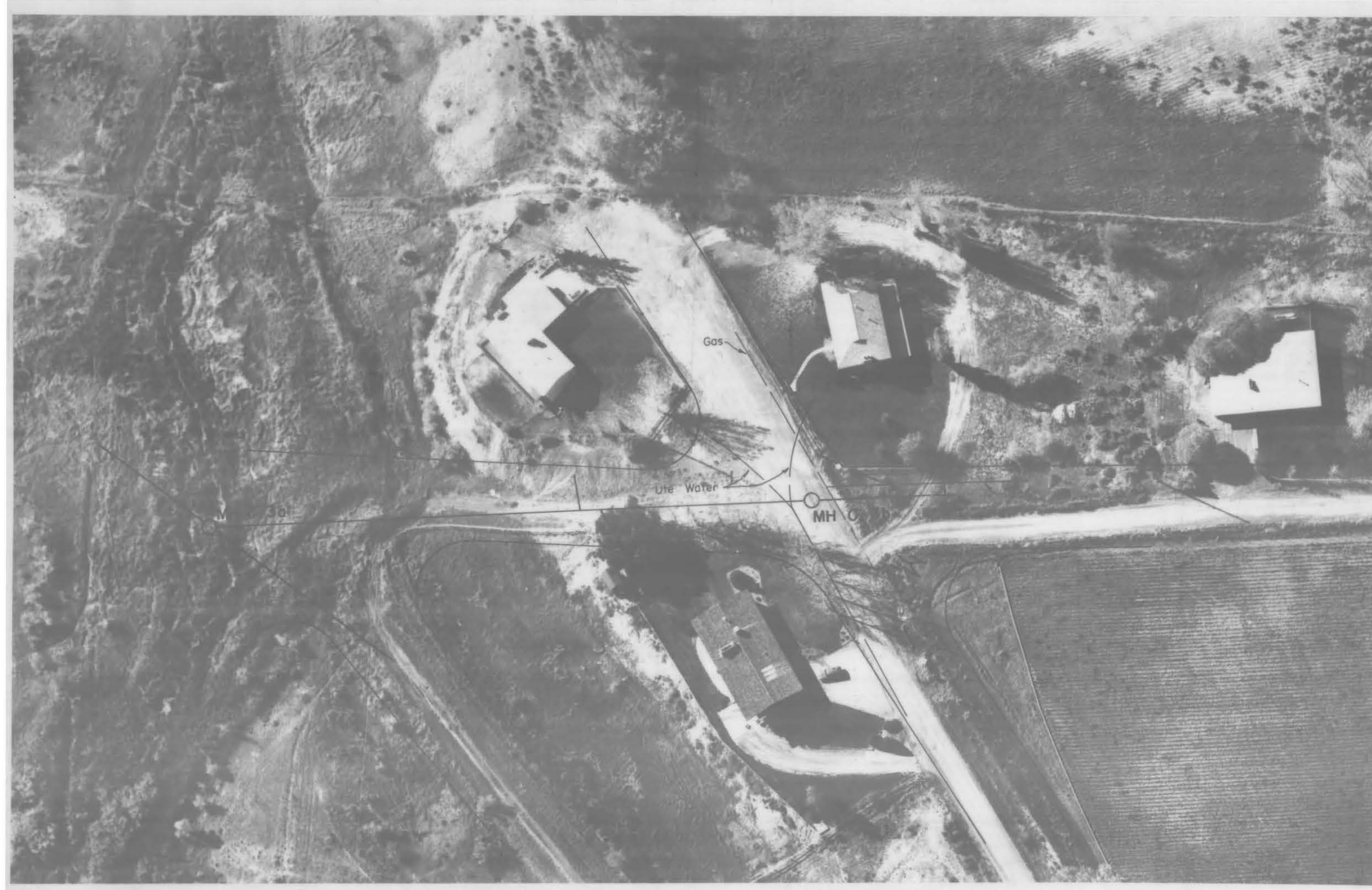
02-105-07AB



ASH DRIVE
D-2 LINE



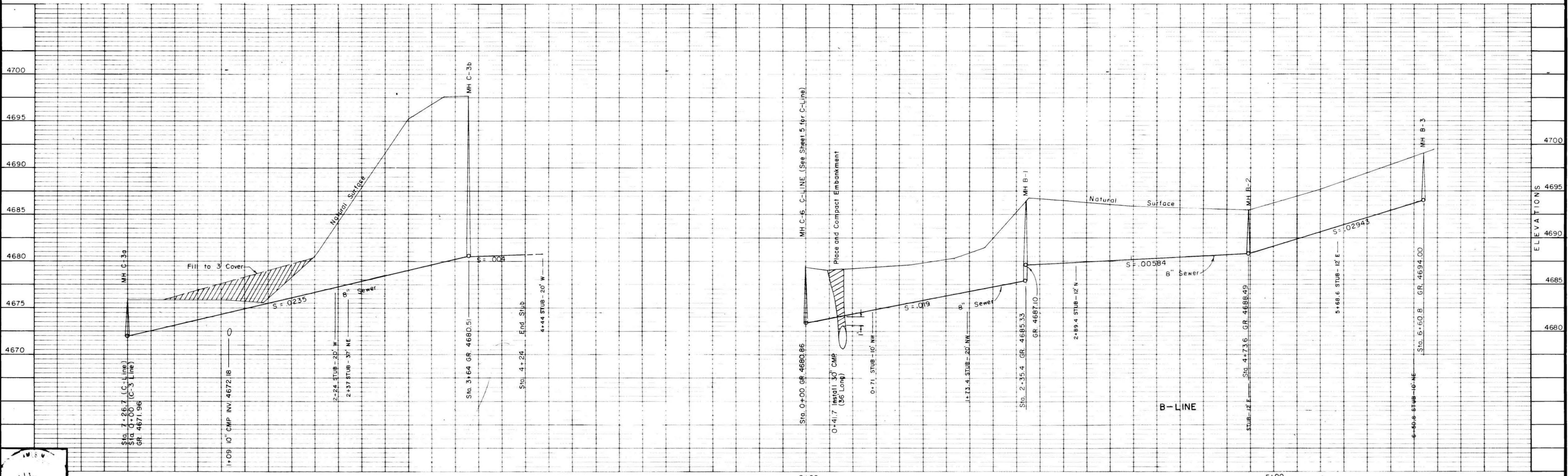
DATE 12/18/74	Drawn R.J.M.	Traced R.J.M.	Checked R.J.M.	Approved for construction <i>R. J. Marshall</i> ENGINEER	OWNER Grand Junction Colorado	WESTERN ENGINEERS INC.	N 26 1/2 ROAD SANITATION SYSTEM D-2 LINE - ASH DRIVE	Plan and Profile DWG. NO. 1-728-1 STATION 0+00 TO 14+03.16 REV. AS CONSTRUCTED MAY 1975	DWG. NO. 1-728-1	NO. OF SHEETS 12	SHEET NO. 7
------------------	-----------------	------------------	-------------------	--	----------------------------------	------------------------	---	--	------------------	---------------------	----------------



C-3 LINE



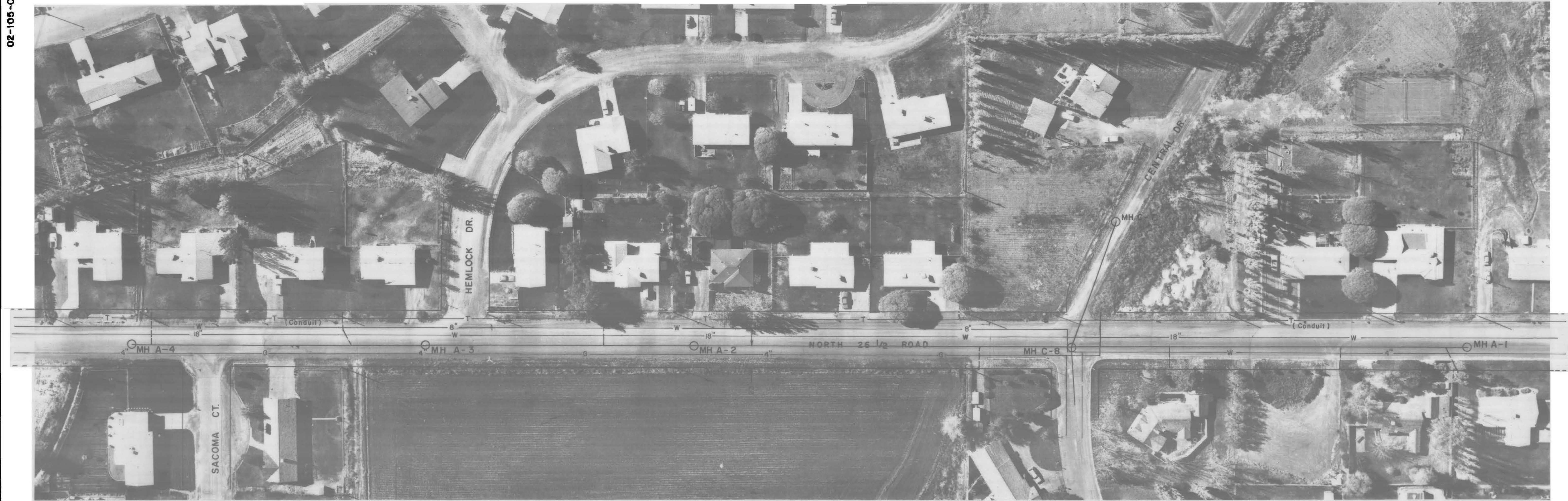
B LINE



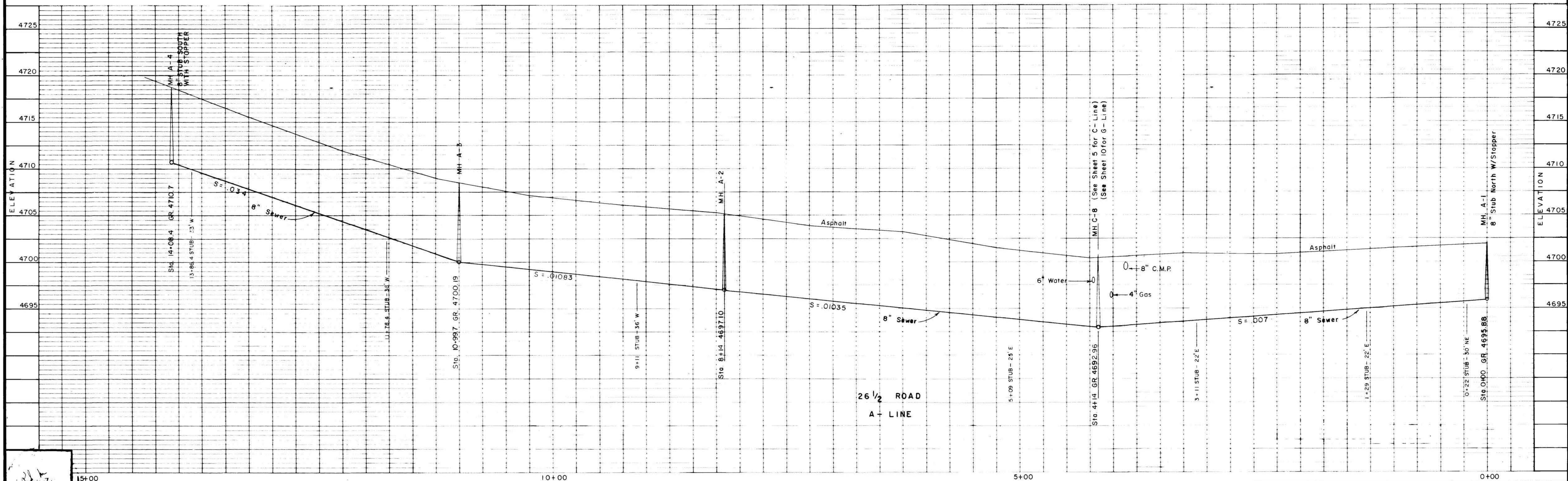
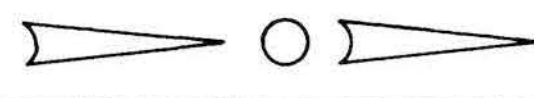
seal

DATE 12/18/74	Drawn <i>R.J.M.</i> Traced <i>R.L.S.</i> Checked <i>R.L.S.</i>	Approved for construction <i>[Signature]</i> ENGINEER	OWNER Grand Junction Colorado	WESTERN ENGINEERS INC. N 26 1/2 ROAD SANITATION SYSTEM C-3 LINE & B LINE	Plan and Profile STATION 0+00 TO 4+24 0+00 TO 6+60.8	DWG. NO. 1-728-1	NO. OF SHEETS 12	SHEET NO. 8
------------------	--	---	----------------------------------	--	--	------------------	---------------------	----------------

REV. "AS CONSTRUCTED" MAY 1975



26 1/2 ROAD
A - LINE



3821

DATE 12/18/74	Drawn R.J.M. 12/13/74 Rev. 1/5/75	Checked G.A.	Approved for construction <i>[Signature]</i>
	ENGINEER	OWNER	

WESTERN ENGINEERS INC.
Grand Junction Colorado

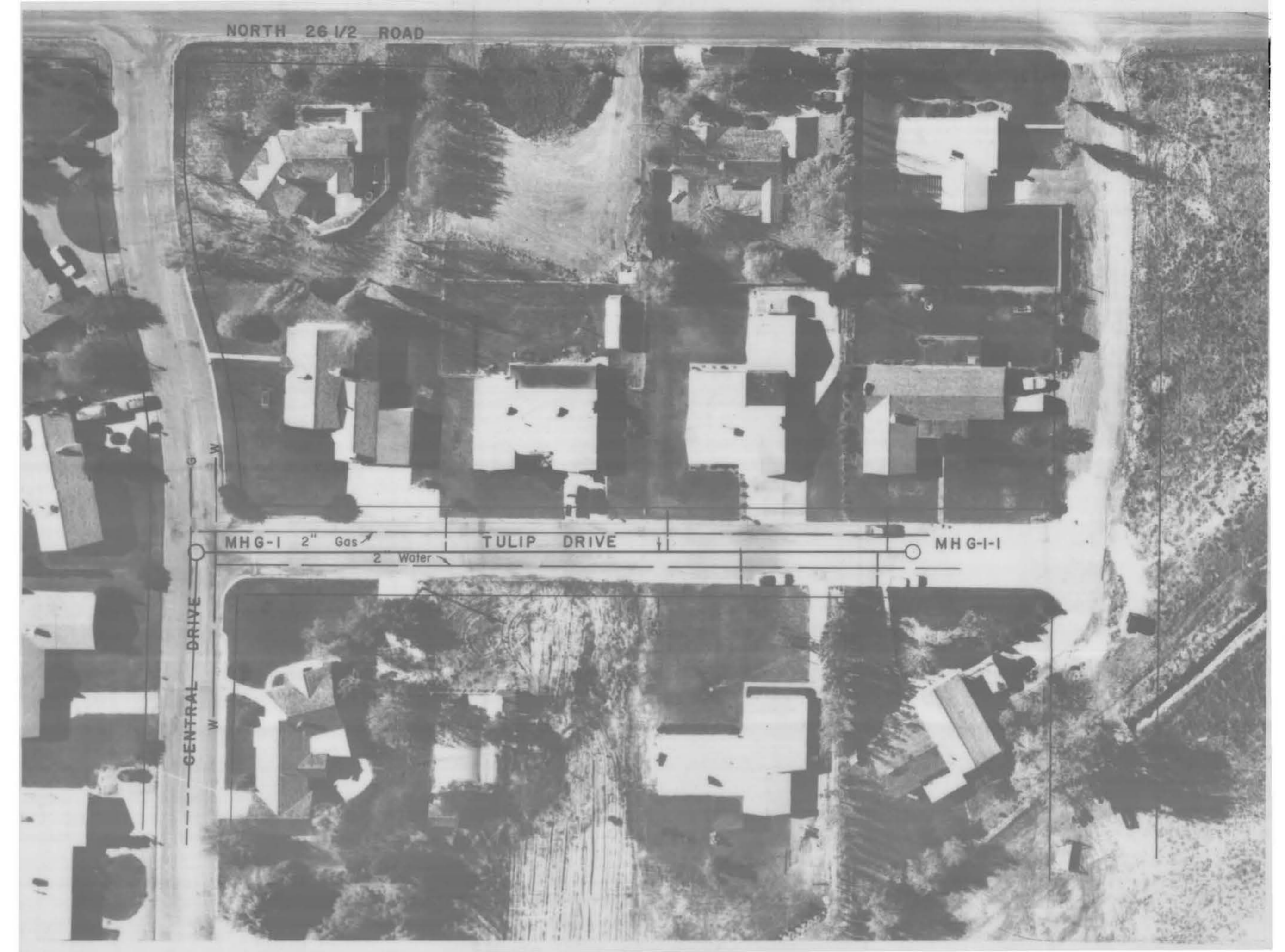
**N 26 1/2 ROAD SANITATION SYSTEM
A - LINE**

Plan and Profile
DWG. NO. 1-728-1

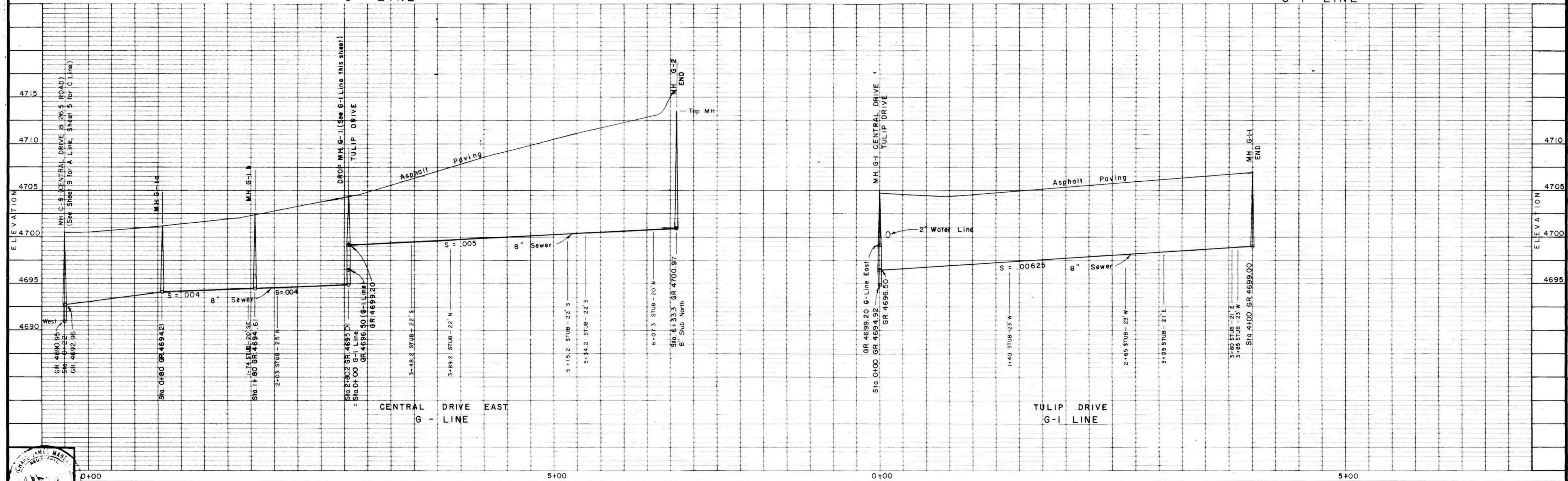
STATION 0+00 TO 14+08.4 REV. "AS CONSTRUCTED" MAY 1975	NO. OF SHEETS 12	SHEET NO. 9
---	---------------------	----------------



CENTRAL DRIVE
G LINE



TULIP DRIVE
G-I LINE



DATE 12/18/74
 Drawn R.J.M. 12/13/74 Rev. 11/775
 Traced S.L.A.
 Checked R.J.M.

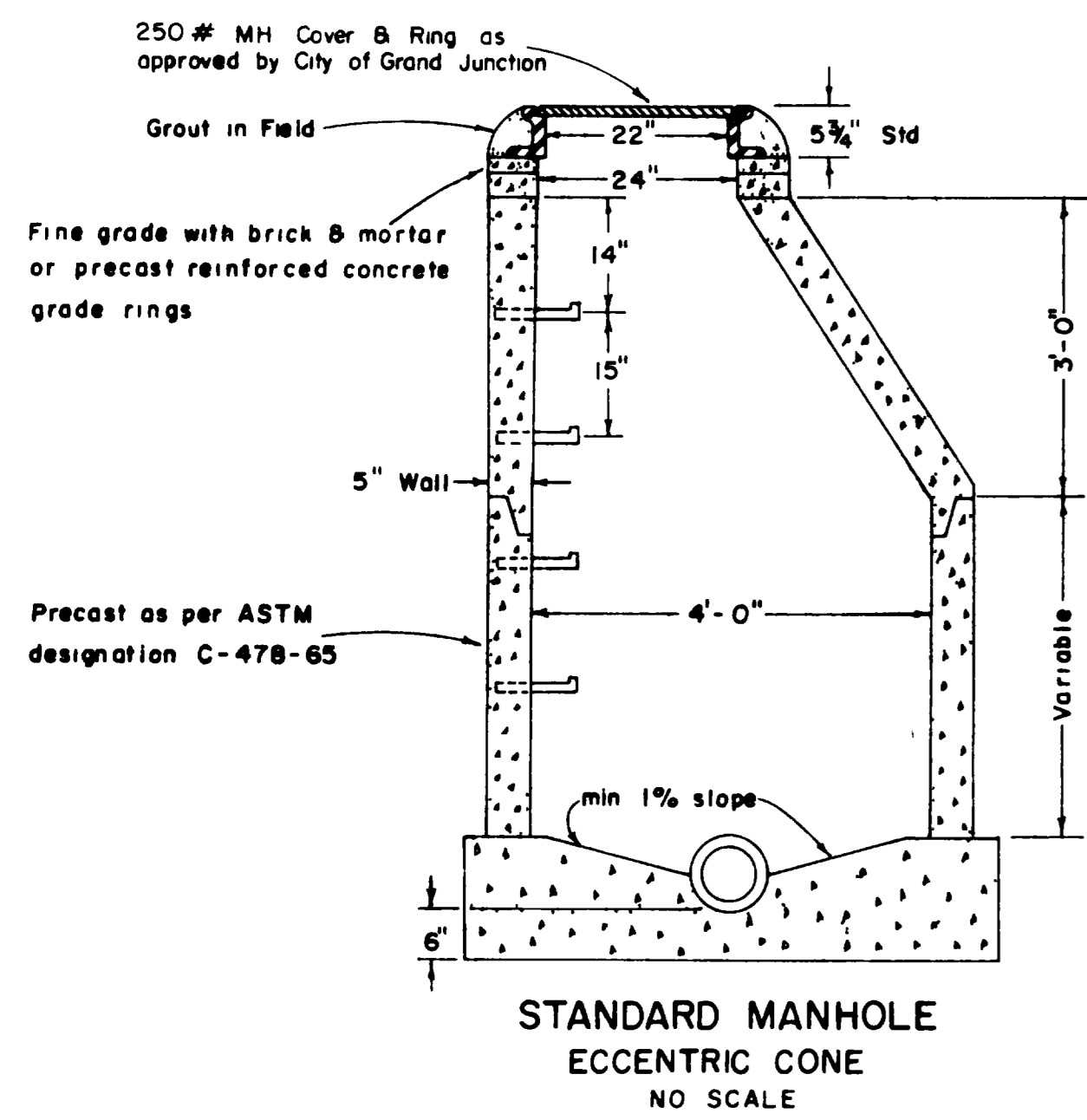
Approved for construction
 ENGINEER OWNER

WESTERN ENGINEERS INC.
 Grand Junction Colorado

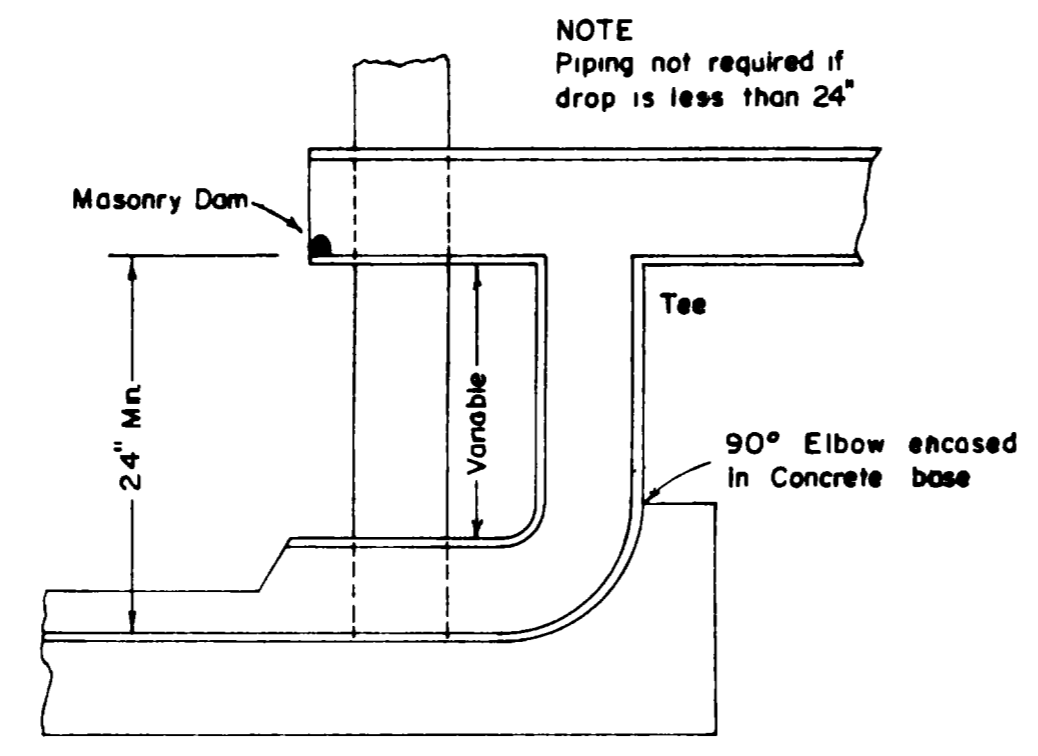
N 26 1/2 ROAD SANITATION SYSTEM
 G-LINE, CENTRAL DRIVE & G-I LINE TULIP DR

Plan and Profile DWG. NO. 1-728-1
 STATION G-LINE -0+22 TO 6+33.3
 G-I LINE 0+00 TO 4+00

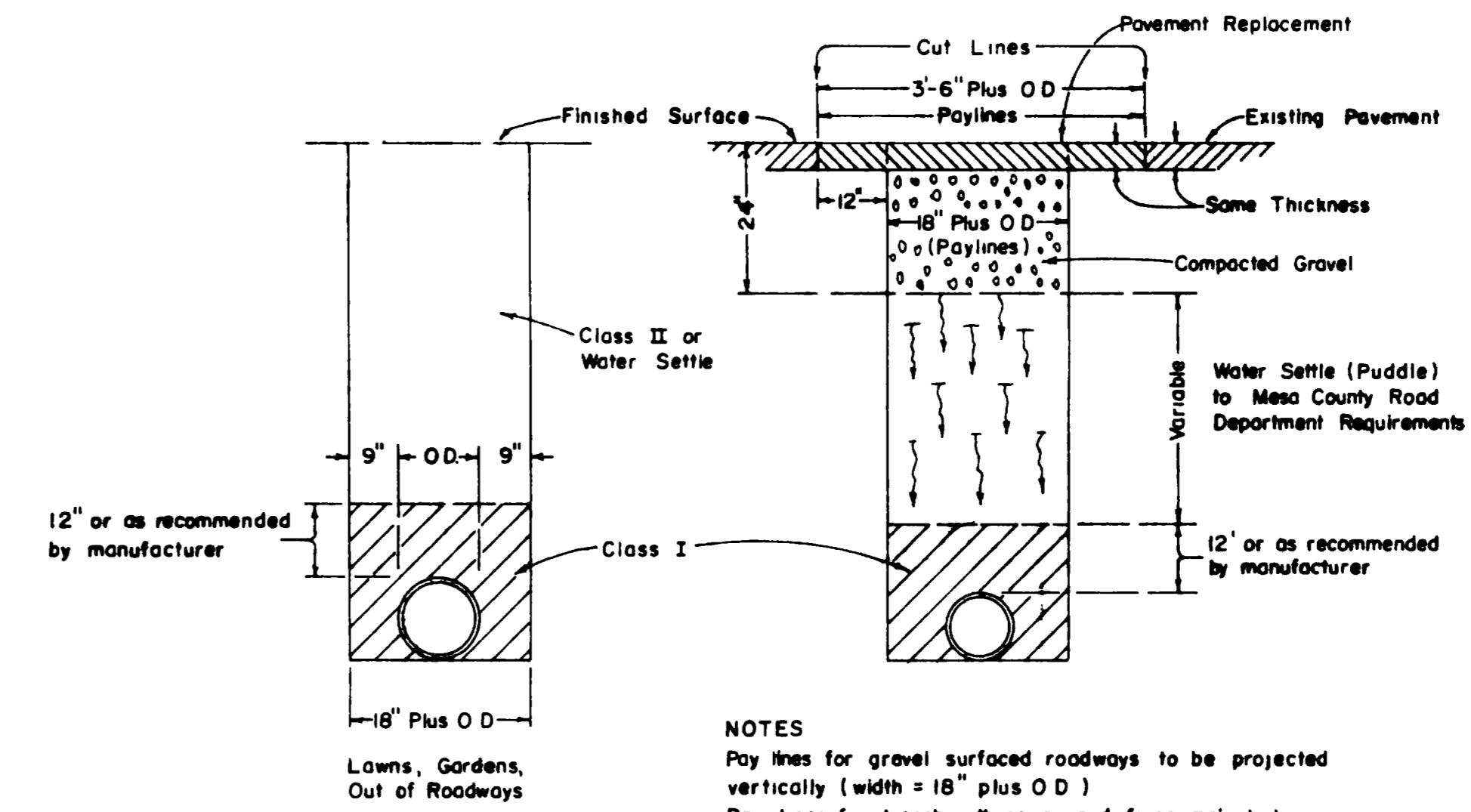
NO. OF SHEETS 12
 SHEET NO. 10
 REV. "AS CONSTRUCTED" MAY 1975



**STANDARD MANHOLE
ECCENTRIC CONE
NO SCALE**

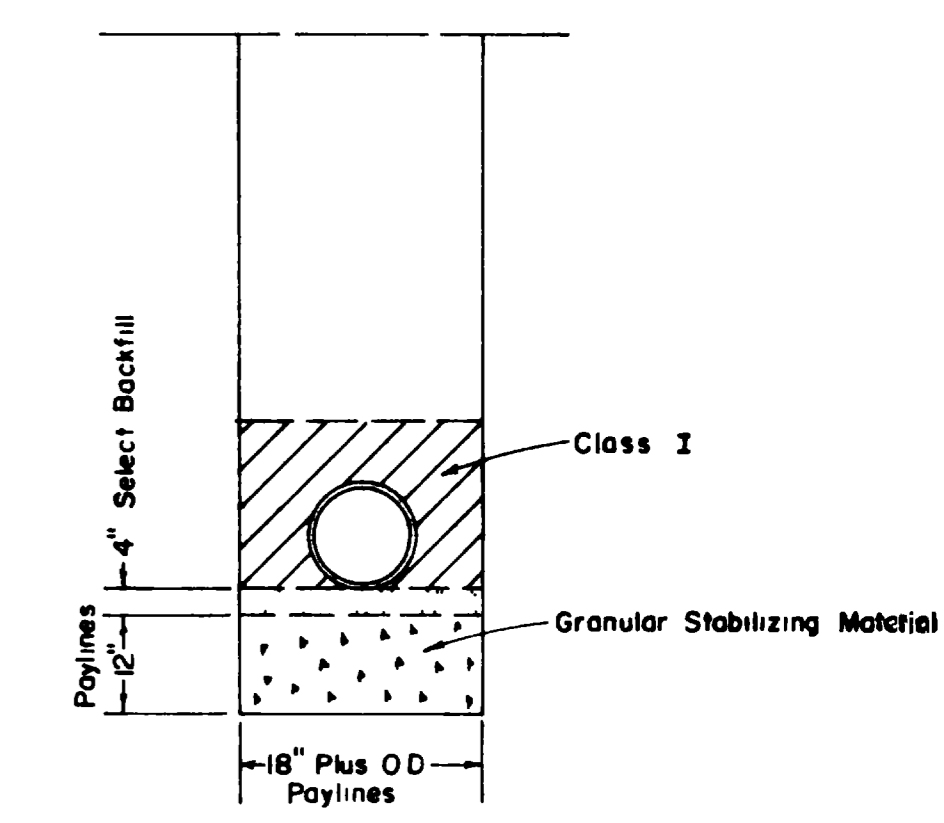


**DROP MANHOLE
TYPICAL PIPING ARRANGEMENT
NO SCALE**



NORMAL SECTIONS

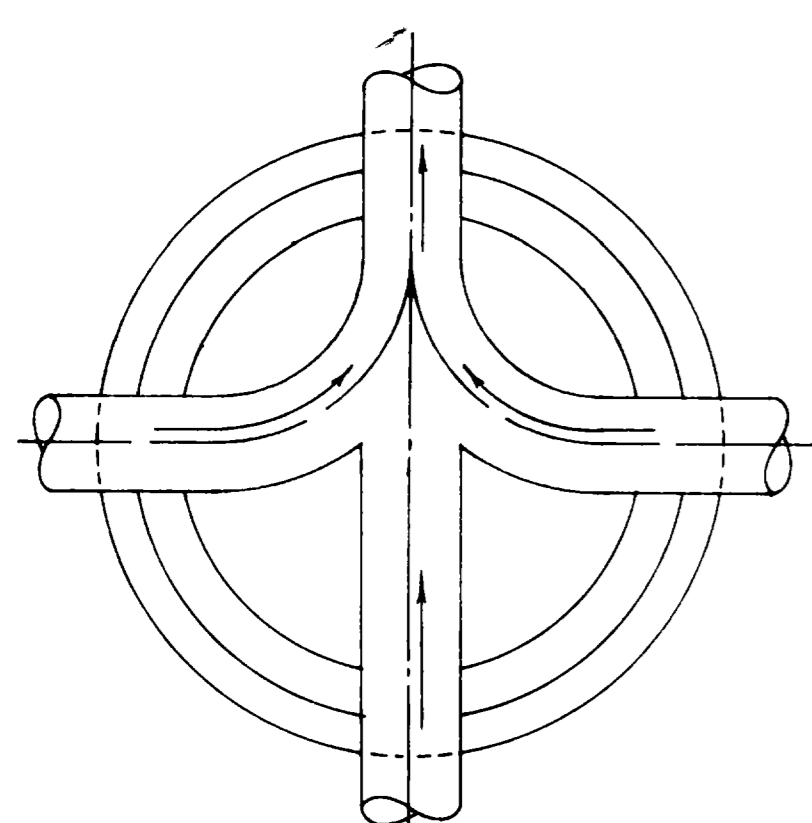
SECTION-IMPROVED ROADWAYS



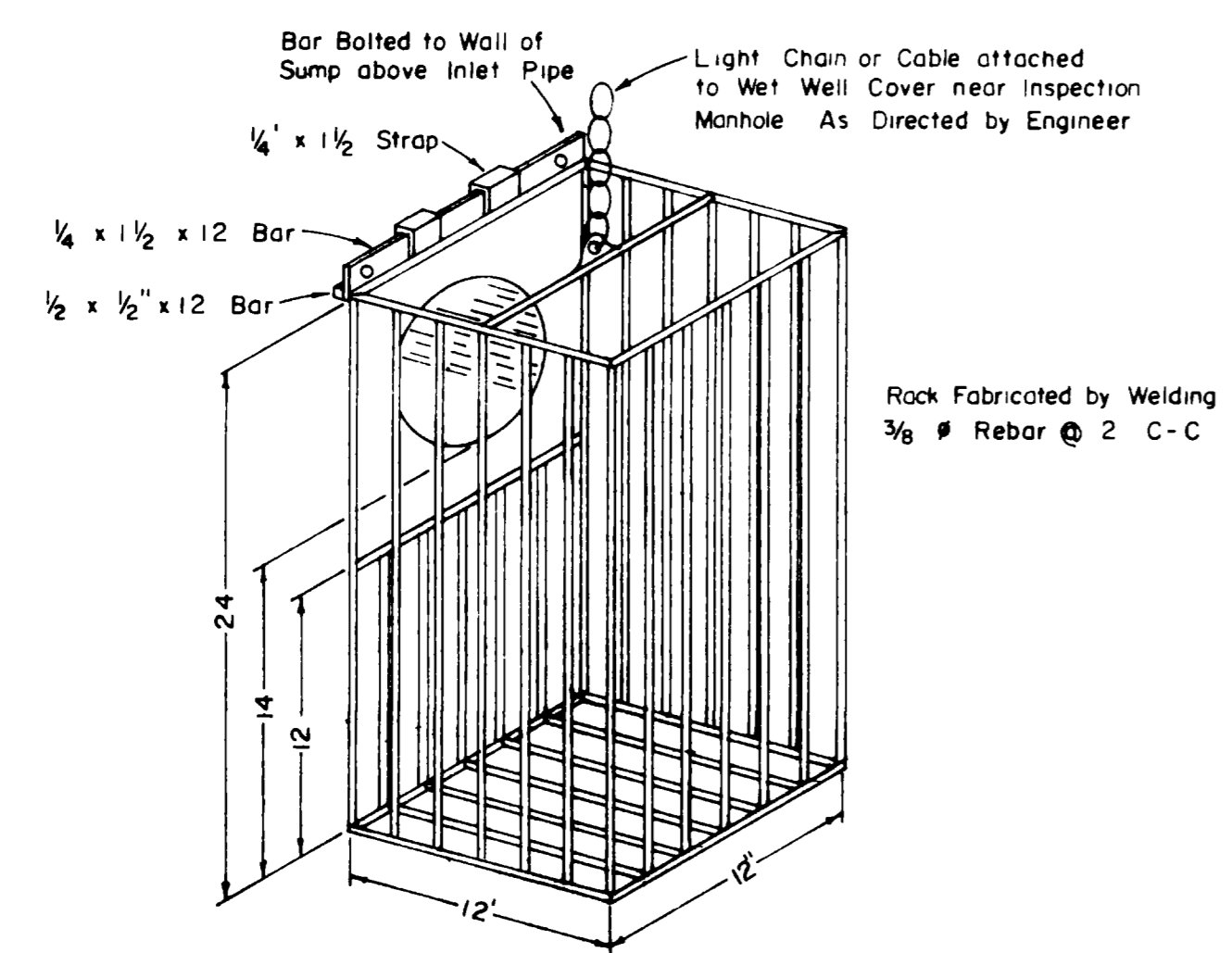
SECTION-UNSTABLE AREAS

NOTES
Pay lines for gravel surfaced roadways to be projected vertically (width = 18" plus OD)
Pay lines for trench with sewer and force main to be widened to 18" plus OD force main plus OD sewer plus clear offset between force main and sewer

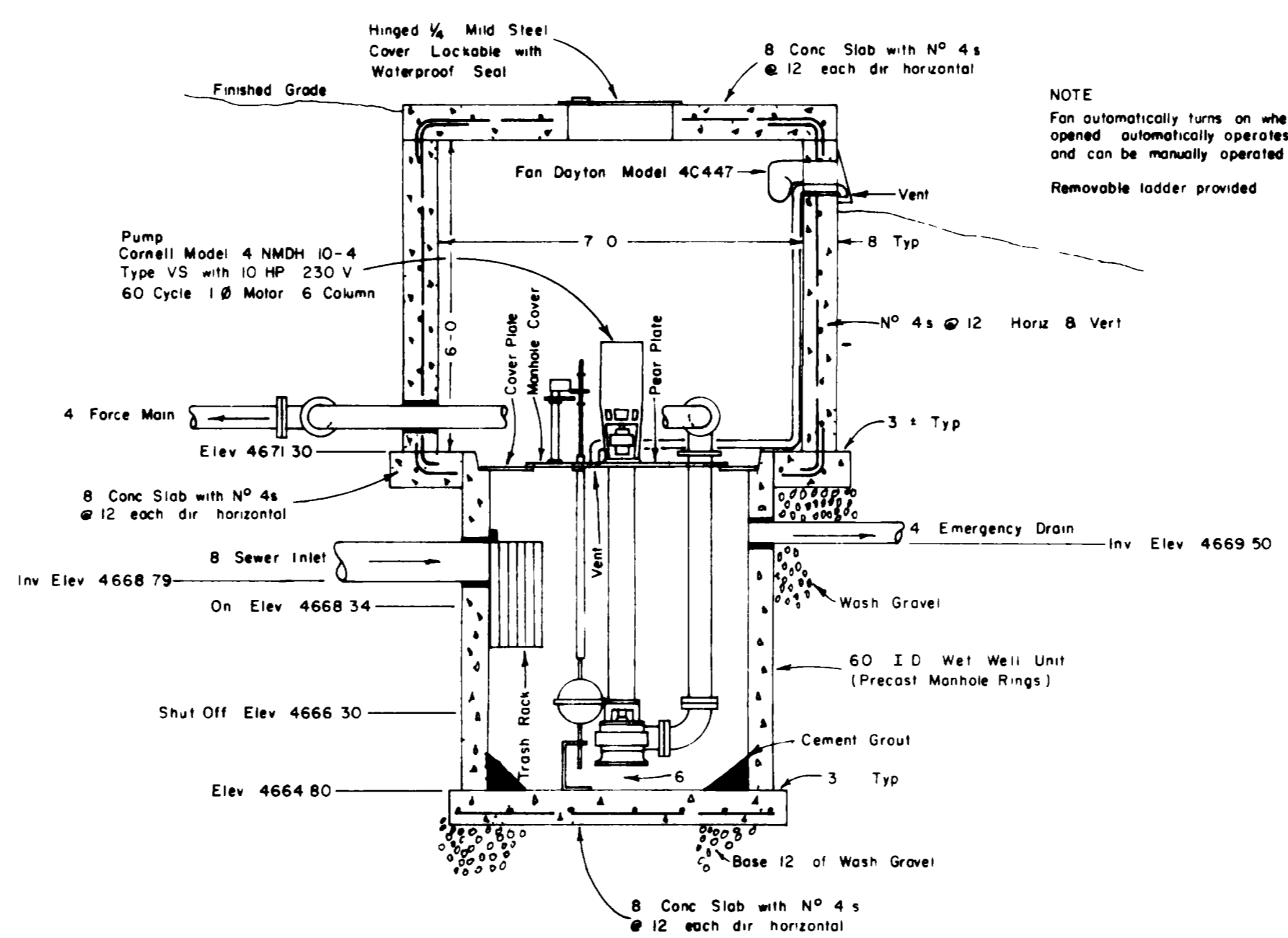
**TYPICAL SEWER TRENCH SECTIONS SHOWING APPLICABLE PAYLINES
NO SCALE**



**MANHOLE BASE
TYPICAL PLAN
NO SCALE**

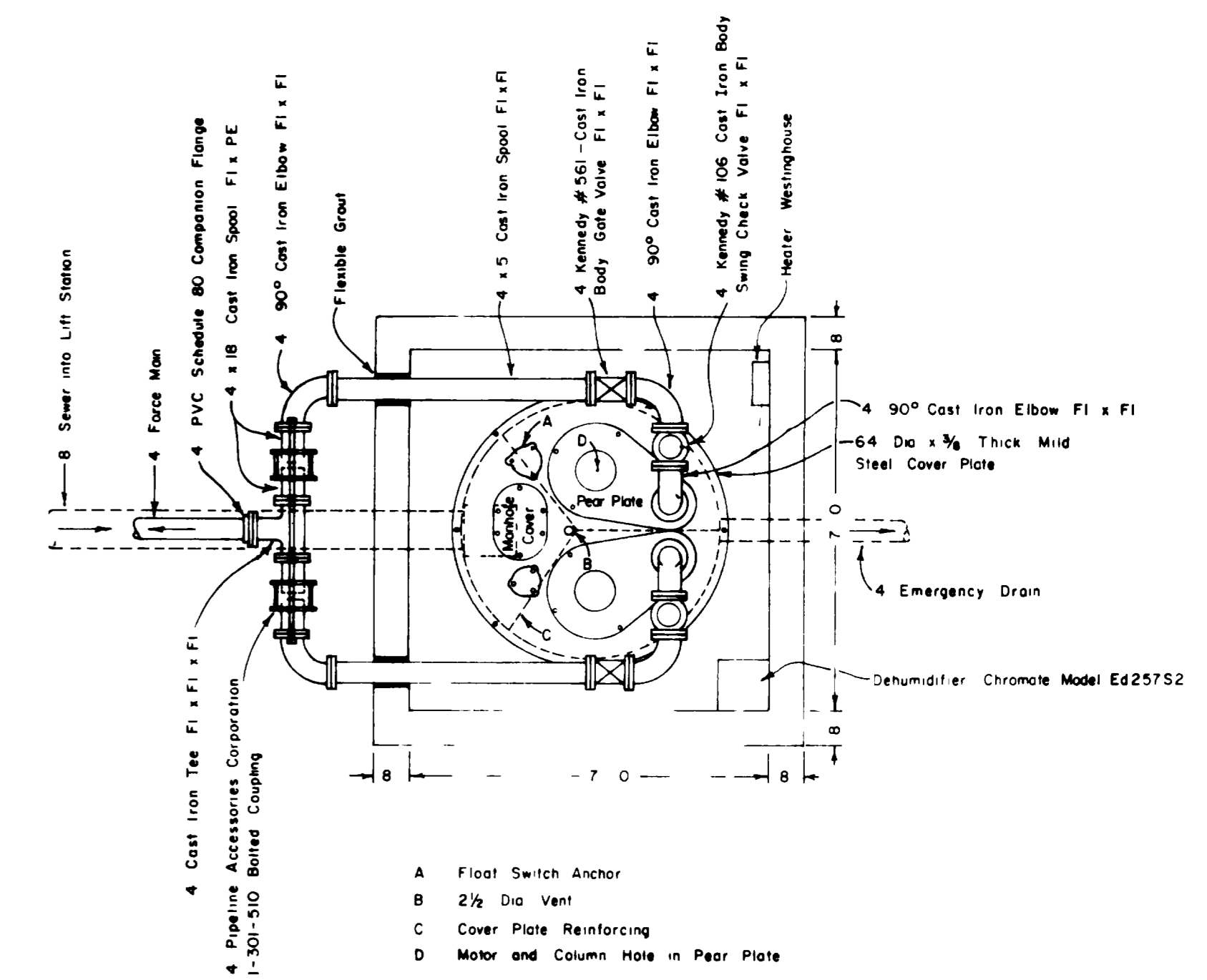


**REMOVABLE TRASH RACK
SCALE 1/2" = 1'-0"**



SECTION

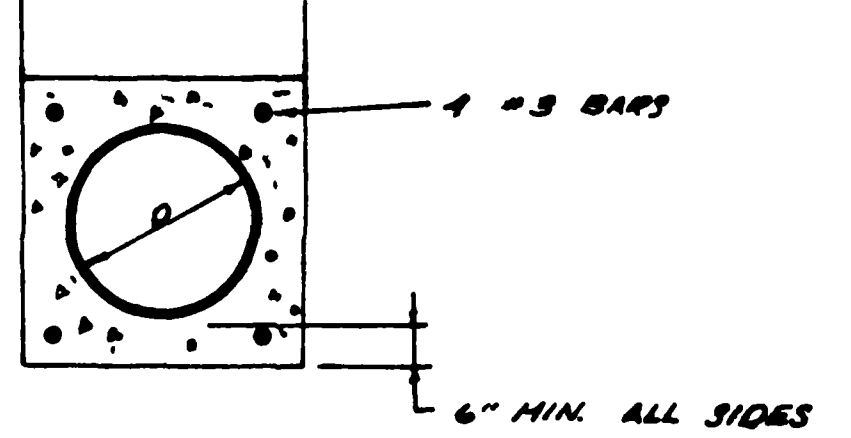
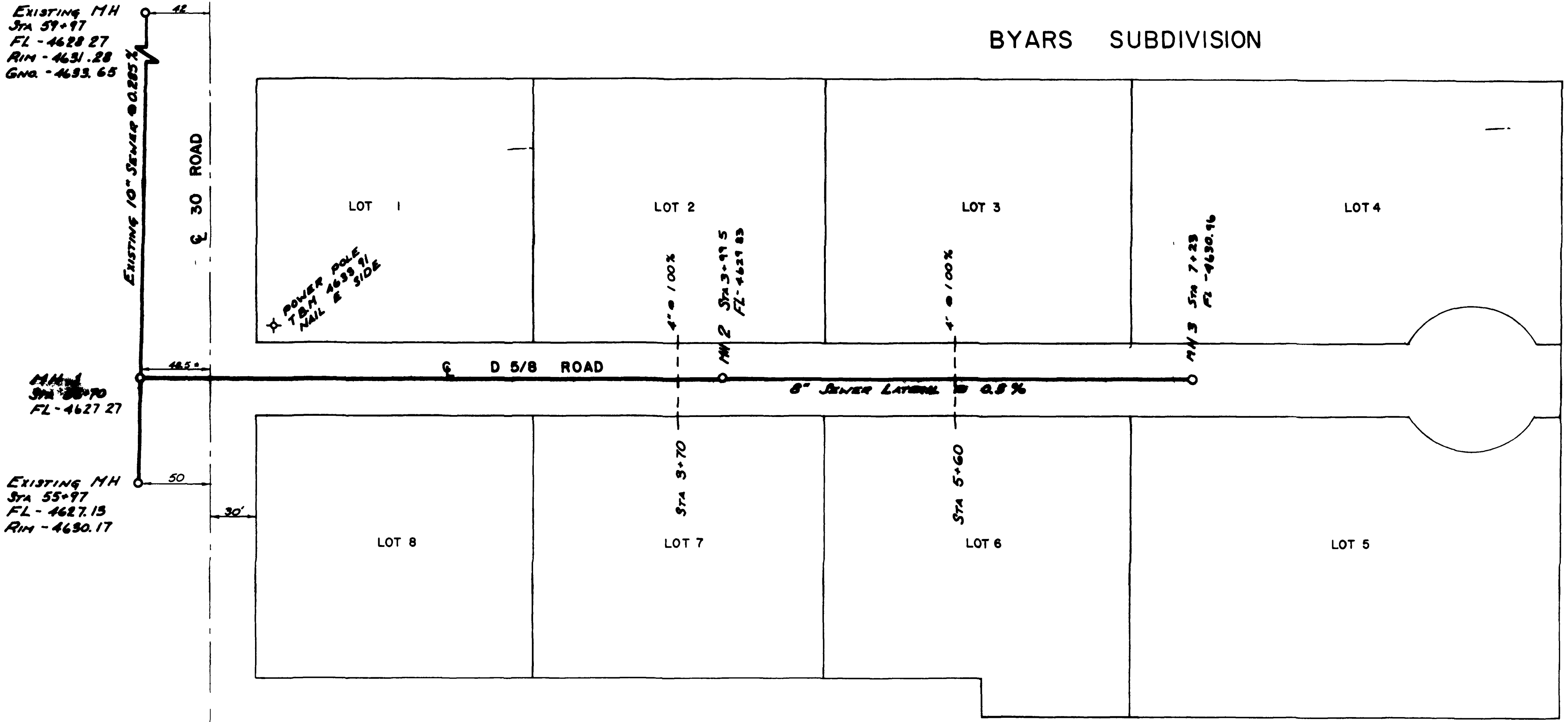
**LIFT STATION DETAILS
SCALE 3/4" = 1'-0"**



PLAN

DATE 12/18/74	Drawn RJM & RTM Rev 1/4/75	Traced R & REV 6/11/75	Checked RJM	Approved for construction <i>[Signature]</i> ENGINEER	OWNER Grand Junction Colorado	WESTERN ENGINEERS INC	N 26 1/2 ROAD SANITATION SYSTEM MISCELLANEOUS DETAILS	Details PIPE TRENCHES, MANHOLES & LIFT STATION REV. "AS CONSTRUCTED"	DWG NO 1-728-1	NO OF SHEETS 12	SHEET NO 11
------------------	-------------------------------	---------------------------	----------------	---	----------------------------------	-----------------------	--	--	-------------------	--------------------	----------------

BYARS SUBDIVISION



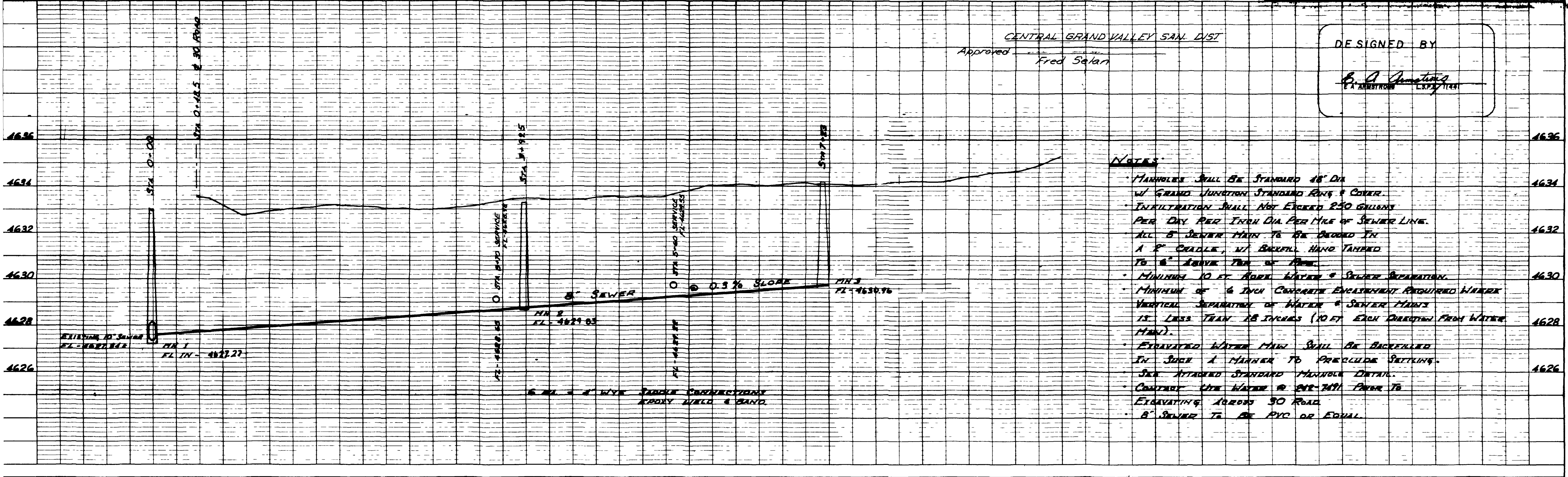
CONCRETE ENCASUREMENT
NOTE: Not Required

AS BUILT PLAT

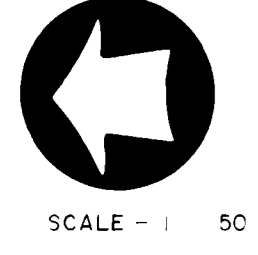
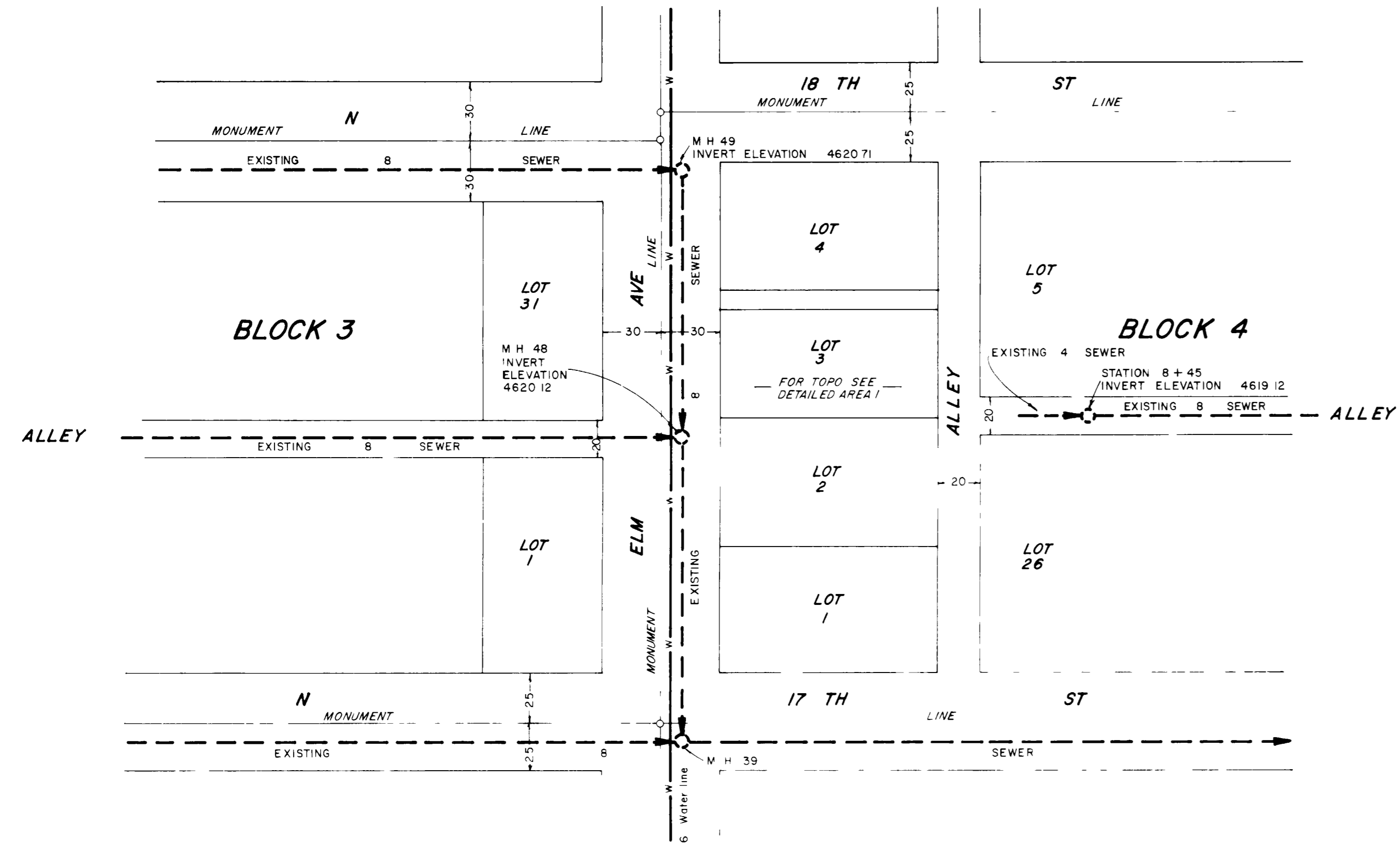
	ARMSTRONG ENGINEERS	
	ENGINEERING - SURVEYING CONCRETE & SOILS TESTING	
	SCALE 1" = 50'	FOR RAY NEAL 458 30 Road
DATE	DESIGNED BY E. A. ARMSTRONG	SHEET of 75269
BY L.A.W.	CHECKED BY E. A. ARMSTRONG	

CENTRAL GRAND VALLEY SAN. DIST
Approved Fred Selari

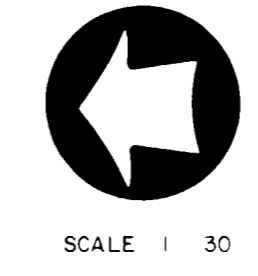
DESIGNED BY
E. A. Armstrong
E. A. ARMSTRONG L.S.P. 7145



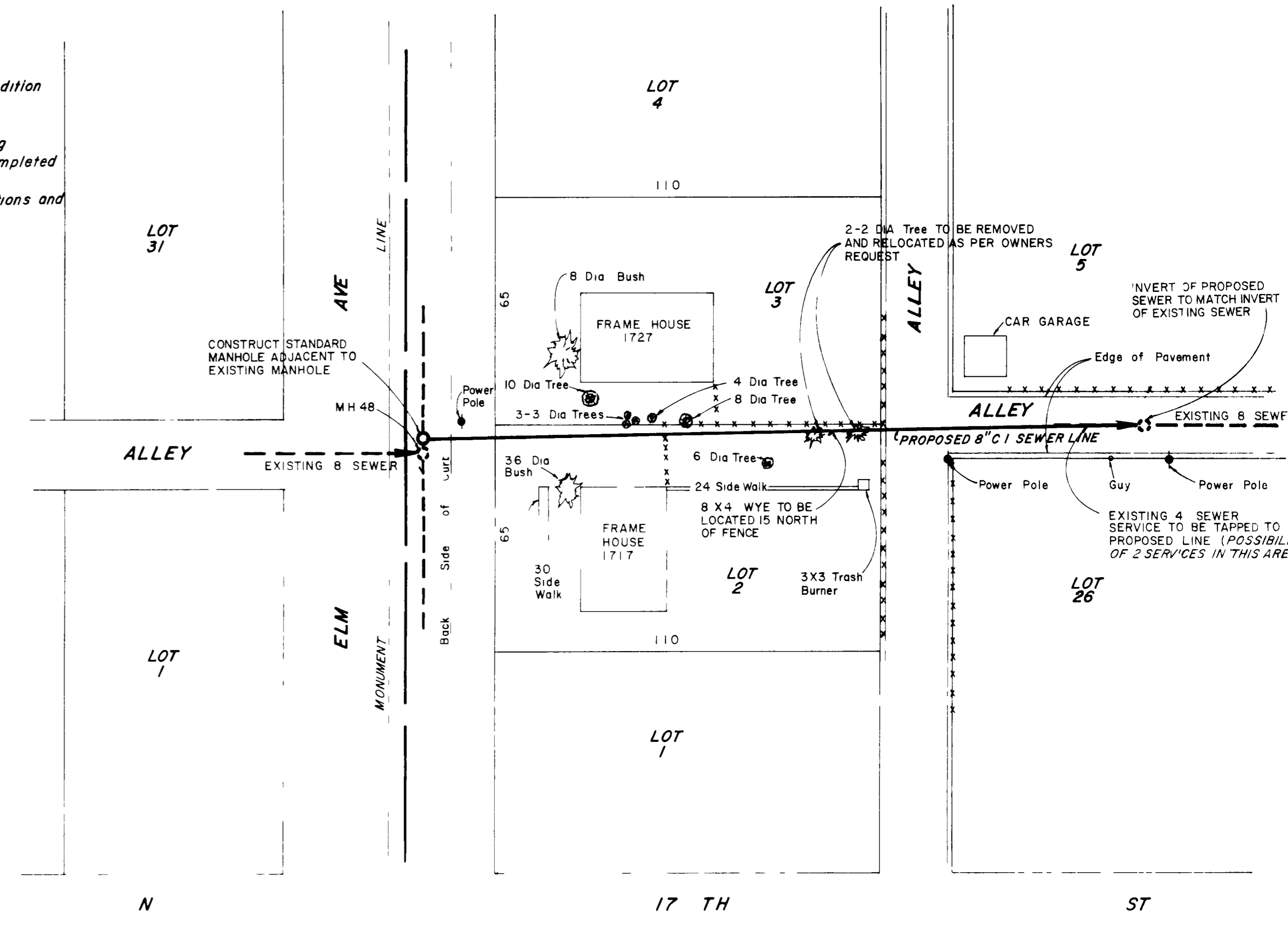
— ELMWOOD PLAZA SUBDIVISION —



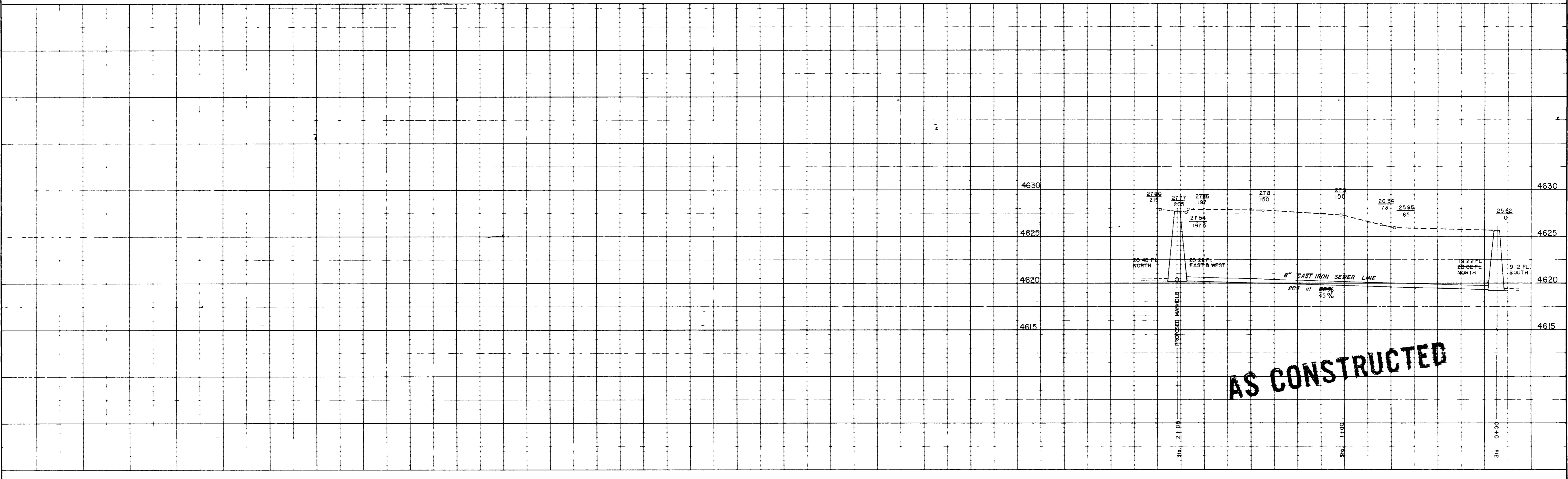
- NOTES:
- 1 All fences to be removed and reset by contractor
 - 2 Driveway and lawn to be restored to original condition
 - 3 All bituminous paving will be replaced by the city
 - 4 All cuts in bituminous paving will have neat edges
 - 5 Existing sewer line between proposed and existing manholes to be plugged when proposed line is completed
 - 6 Curb and gutter to be replaced by the city
 - 7 All work to conform to the attached general conditions and special conditions of the city of Grand Junction



AS CONSTRUCTED



DETAILED AREA I



AS CONSTRUCTED