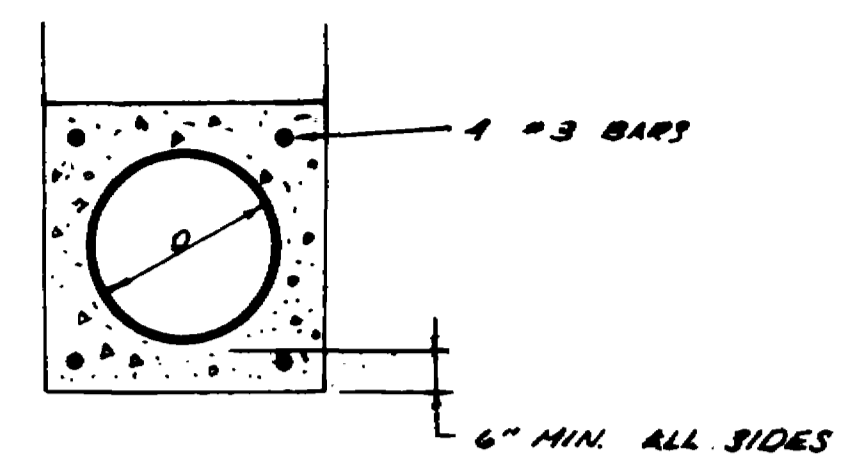
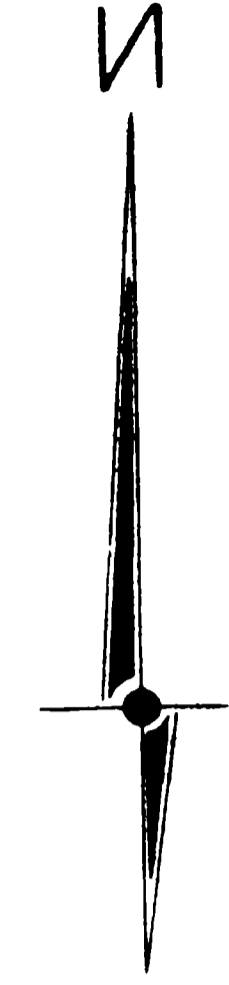
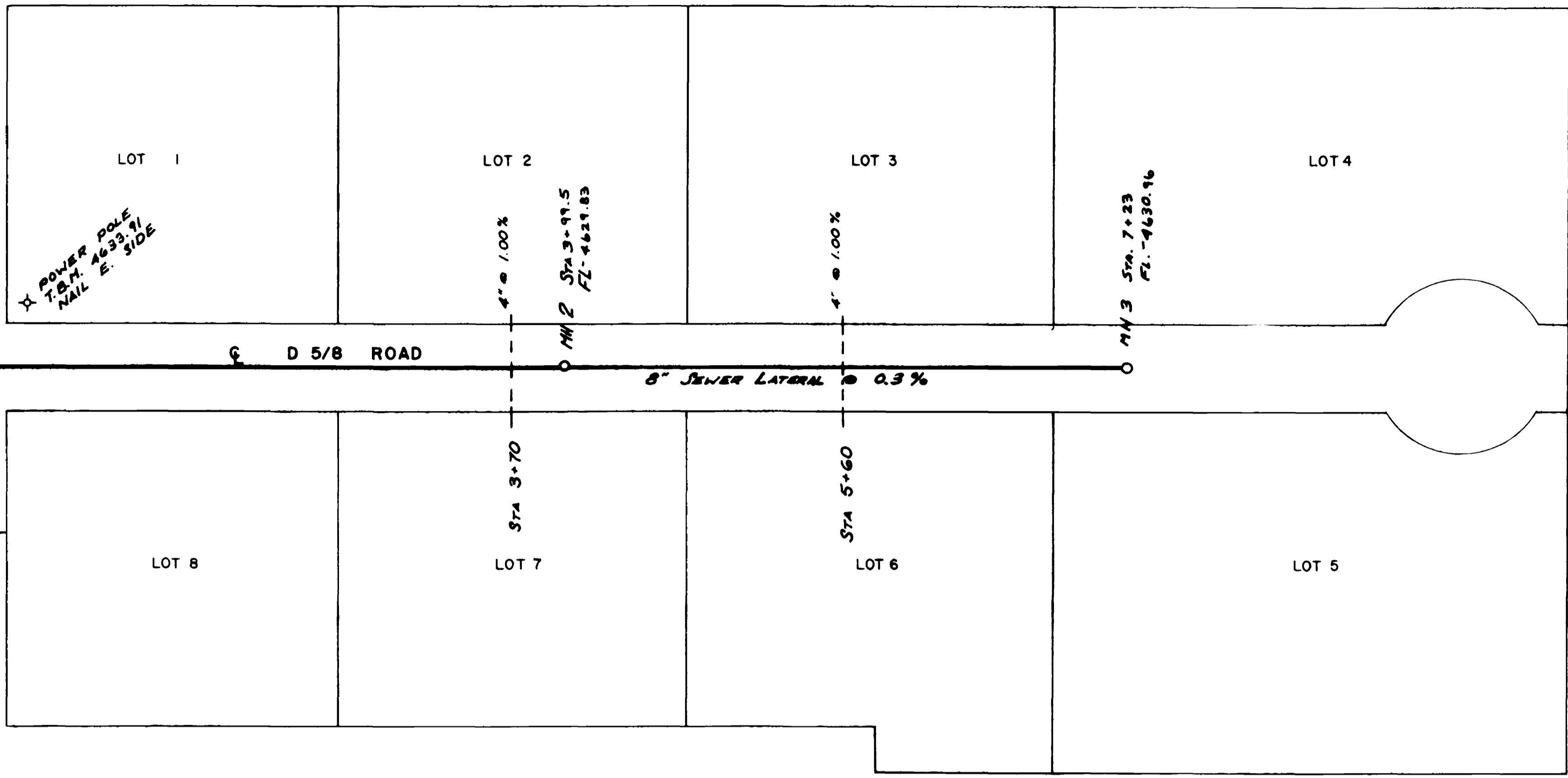


BYARS SUBDIVISION

EXISTING MH
Sta 59+97
FL - 4628.27
RIM - 4631.28
GND. - 4633.65

EXISTING 10" SEWER @ 0.25%
E 30 ROAD



CONCRETE ENCASUREMENT
NOTE: Not Required.

AS BUILT PLAT

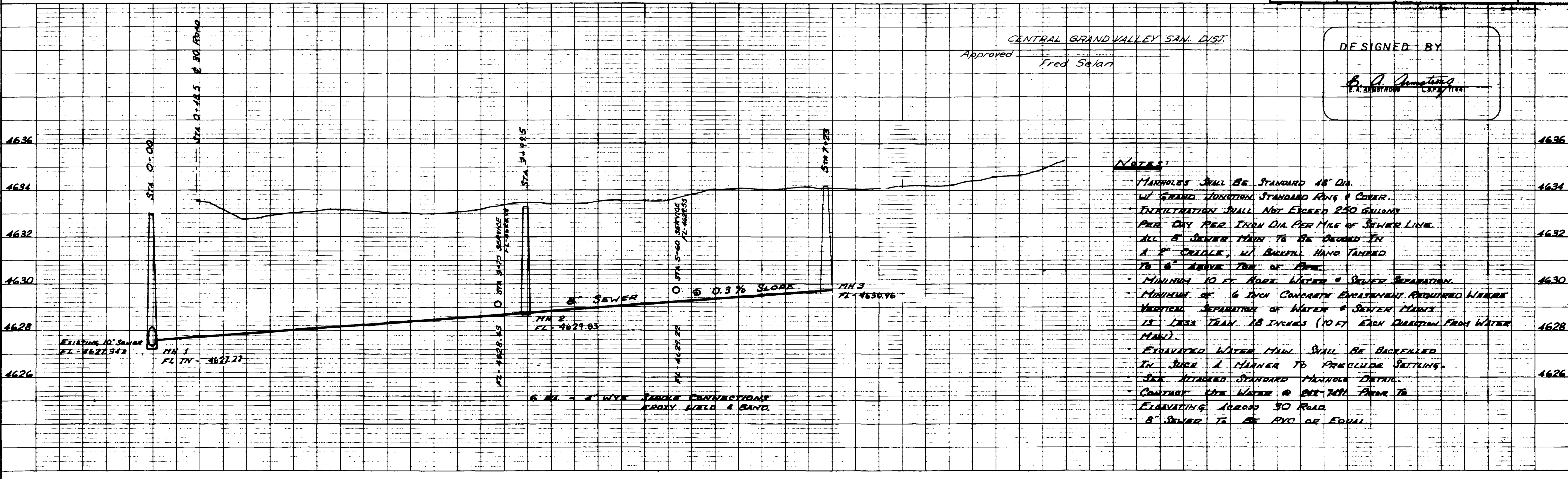
MH 1
Sta 56+70
FL - 4627.27

EXISTING MH
Sta 55+97
FL - 4627.13
RIM - 4630.17

ARMSTRONG ENGINEERS ENGINEERING - SURVEYING CONCRETE & SOILS TESTING	
SCALE: 1" = 50'	FOR: RAY NEAL 458 30 Road
DATE: _____	BY: _____
CHECKED BY: _____	DATE: _____
SHEET of 75269	

CENTRAL GRAND VALLEY SAN. DIST.
Approved: Fred Selart

DESIGNED BY
B. A. Armstrong
E.A. ARMSTRONG L.S.P. 11424



- NOTES:**
- MANHOLES SHALL BE STANDARD 48" DIA. W/ GRAND JUNCTION STANDARD RING & COVER.
 - INFILTRATION SHALL NOT EXCEED 250 GALLONS PER DAY PER INCH DIA. PER MILE OF SEWER LINE.
 - ALL 8" SEWER MAINS TO BE BEDDED IN 1" CRADLE, W/ BARFILL HAND TAPPED TO 6" ABOVE TOP OF PIPE.
 - MINIMUM 10 FT. HORIZ. WATER & SEWER SEPARATION.
 - MINIMUM OF 6 INCH CONCRETE ENCASUREMENT REQUIRED WHERE VERTICAL SEPARATION OF WATER & SEWER MAINS IS LESS THAN 18 INCHES (10 FT. EACH DIRECTION FROM WATER MAIN).
 - EXCAVATED WATER MAIN SHALL BE BACKFILLED IN SUEW A MANNER TO PRECLUDE SETTLING.
 - SEE ATTACHED STANDARD MANHOLE DETAIL.
 - CONTACT THE WATER & SEWER DEPT. PRIOR TO EXCAVATING ACROSS 30 ROAD.
 - 8" SEWER TO BE PVC OR EQUAL.

6 IN. - 1" W/ W/ SAND CONNECTIONS
EPOXY LINED & SAND.