

CITY OF GRAND JUNCTION, COLORADO

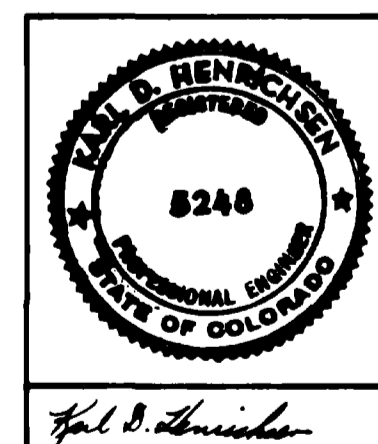
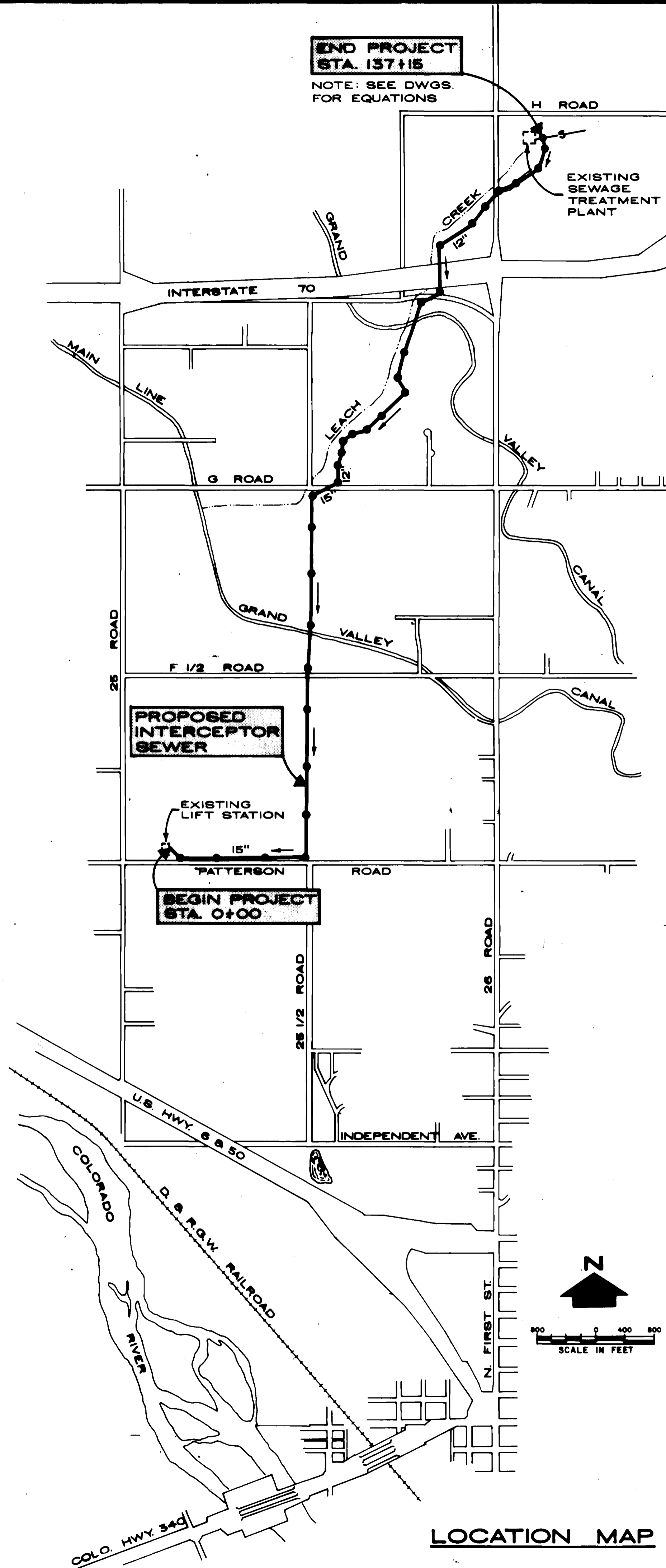
PARADISE HILLS INTERCEPTOR SEWER 1976

INDEX TO DRAWINGS

SHEET NO.	TITLE
1	COVER SHEET, LOCATION MAP & DWG. INDEX
2	PLAN & PROFILE, STA. 0+00 TO 15+00
3	PLAN & PROFILE, STA. 15+00 TO 30+00
4	PLAN & PROFILE, STA. 30+00 TO 45+00
5	PLAN & PROFILE, STA. 45+00 TO 60+00
6	PLAN & PROFILE, STA. 60+00 TO 75+00
7	PLAN & PROFILE, STA. 75+00 TO 90+00
8	PLAN & PROFILE, STA. 90+00 TO 105+00
9	PLAN & PROFILE, STA. 105+00 TO 120+00
10	PLAN & PROFILE, STA. 120+00 TO 132+00
11	PLAN & PROFILE, STA. 132+00 TO 137+15 E.O.L.
12	MISCELLANEOUS DETAILS

LEGEND:

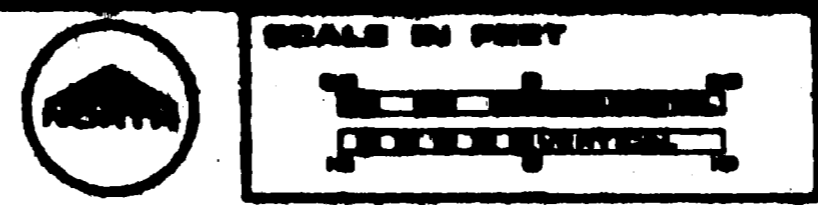
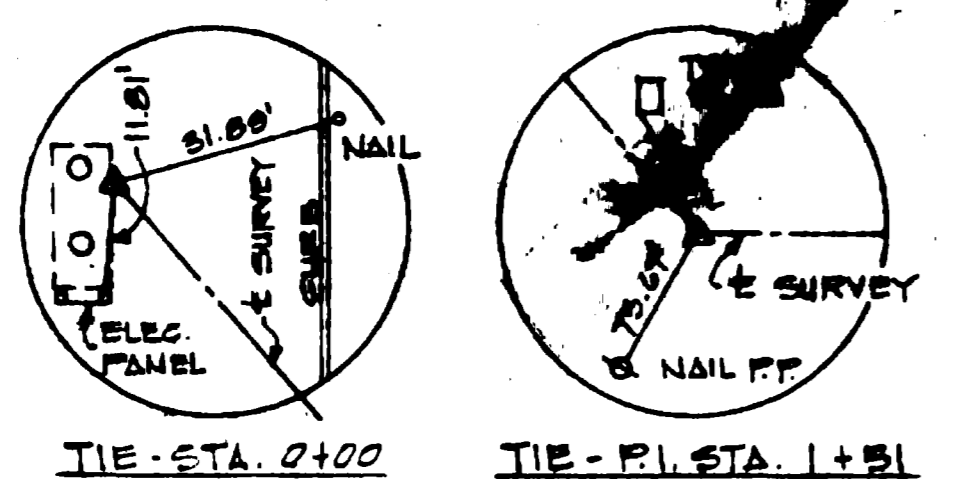
	PROPOSED SANITARY SEWER (W/ MANHOLE & FLOW ARROW)
	EXIST. SANITARY SEWER/MANHOLE
	FORCE MAIN
	WATER MAIN
	GAS MAIN
	UNDERGROUND ELECTRIC
	UNDERGROUND TELEPHONE
	LAWN SPRINKLER
	SOIL BORING LOCATION
	FENCE
	IRRIGATION DITCH
	BARROW DITCH
	UTILITY POLE
	PAVED ROAD
	GRAVEL OR DIRT ROAD
	BANK OR SLOPE



APPROVED BY
 CITY OF GRAND JUNCTION
James E. Patterson, Jr.
 DIRECTOR OF PUBLIC WORKS
 DATE: Nov. 22, 1976

HENNINGSON, DURHAM & RICHARDSON, INC.
HDR ENGINEERING ARCHITECTURE PLANNING
 OF COLORADO
 GRAND JUNCTION & DENVER

02-132-02 AB



DATE	DESCRIPTION	MADE	APPROV.
NOV 14, 77	AS CONSTRUCTED	BAH	RS

CITY OF GRAND JUNCTION, COLORADO

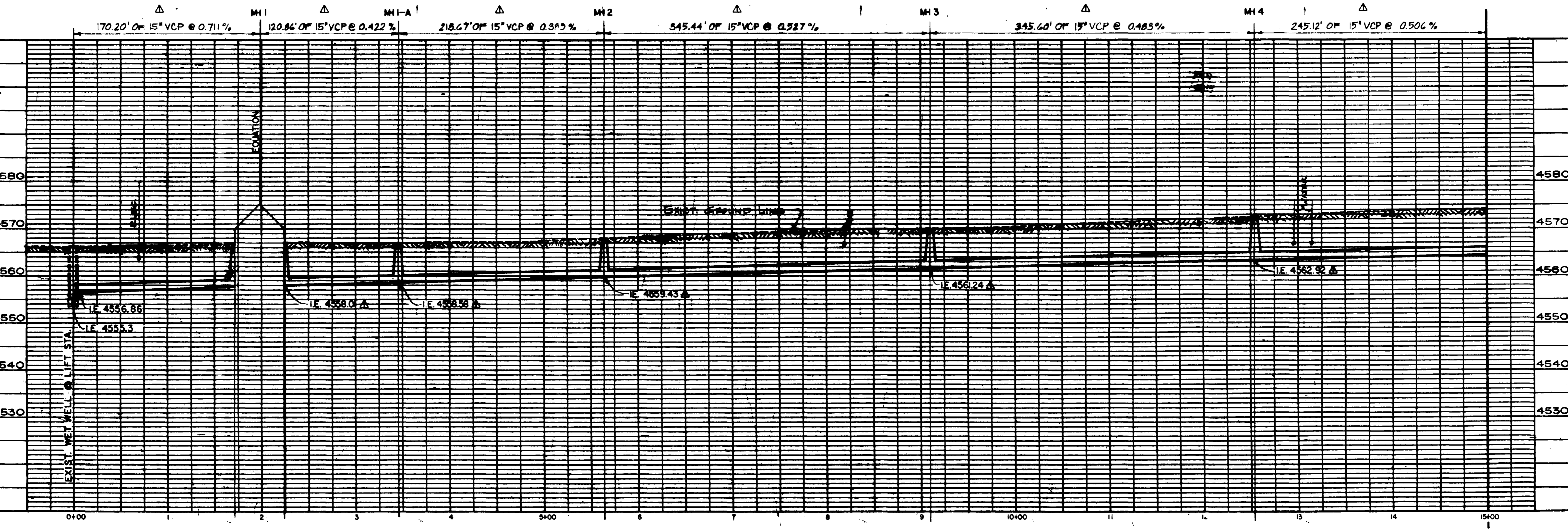
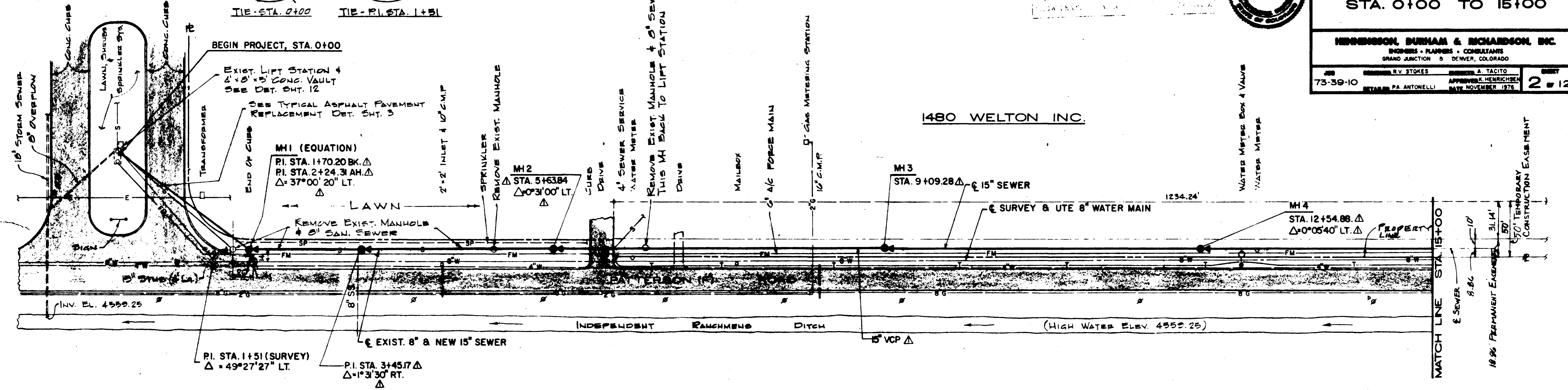
PARADISE HILLS INTERCEPTOR SEWER

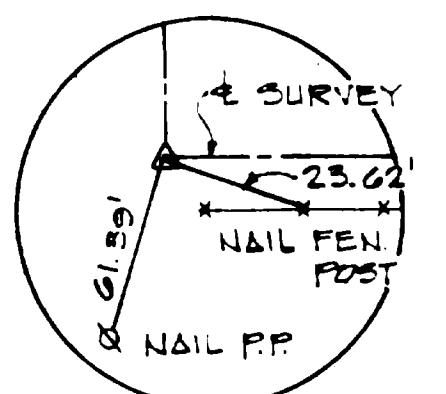
PLAN & PROFILE STA. 0+00 TO 15+00

HENDERSON, BURHAM & RICHARDSON, INC.
 ENGINEERS - PLANNERS - CONSULTANTS
 GRAND JUNCTION & DENVER, COLORADO

DESIGNED BY	APPROVED BY	DATE
R.V. STOKES	A. TACITO	NOVEMBER 1976

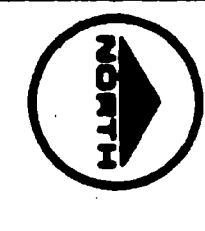
73-39-10 **2** of **12**





TIE - P.I. STA. 18+92

18.84' PERMANENT EASEMENT
EASEMENT
E SEWER
MATCH LINE STA. 15+00
57' 3/4"
TEMPORARY CONSTRUCTION EASEMENT



DATE	DESCRIPTION	BY	APPROVED
20 JUN 77	AS CONSTRUCTED	BAH	RS

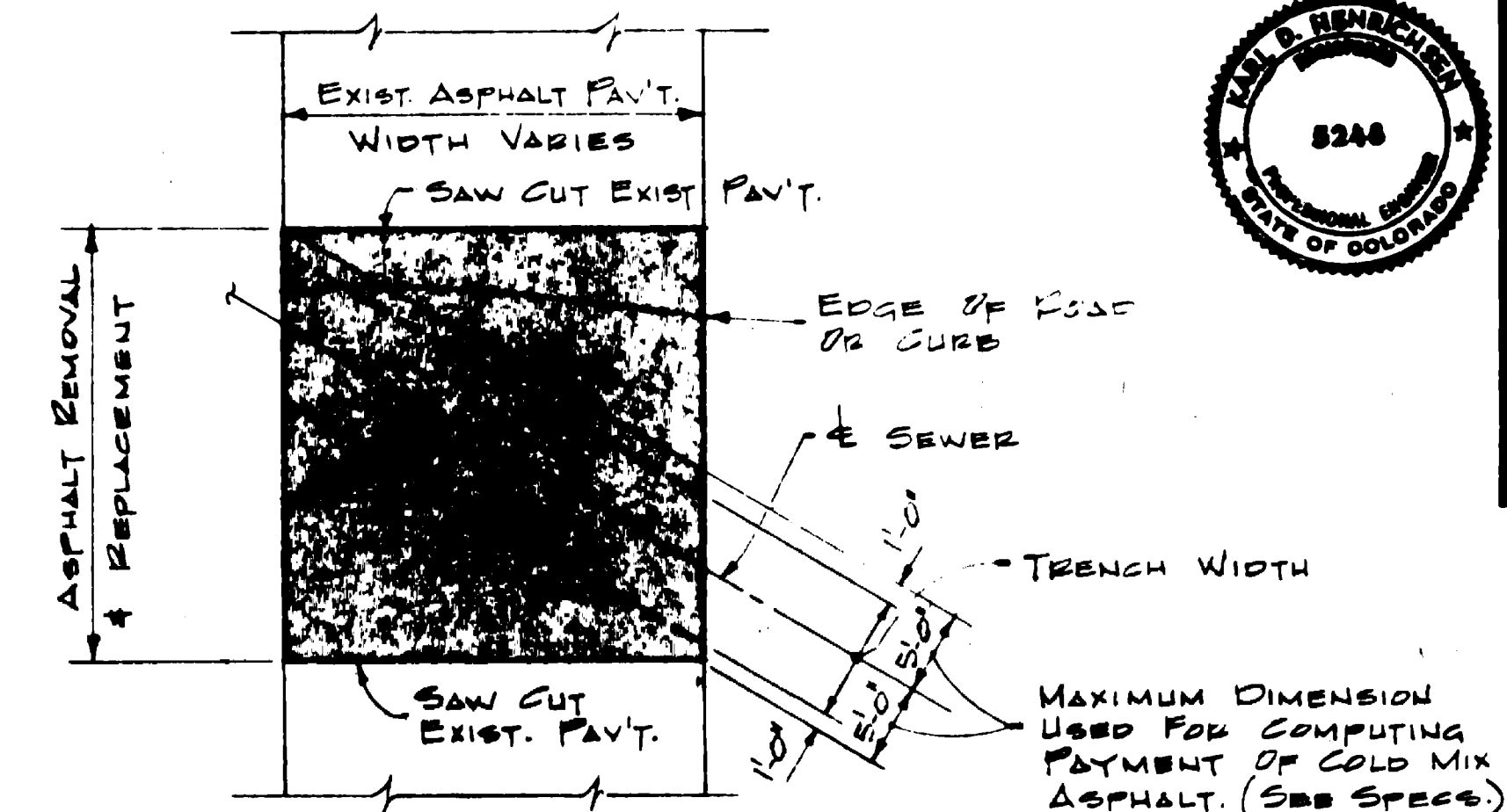
CITY OF GRAND JUNCTION, COLORADO

PARADISE HILLS INTERCEPTOR SEWER

PLAN & PROFILE STA. 15+00 TO 30+00

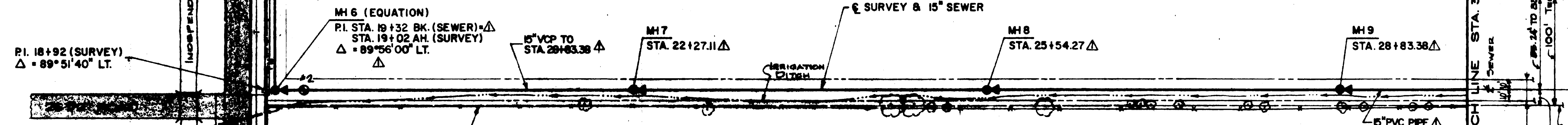
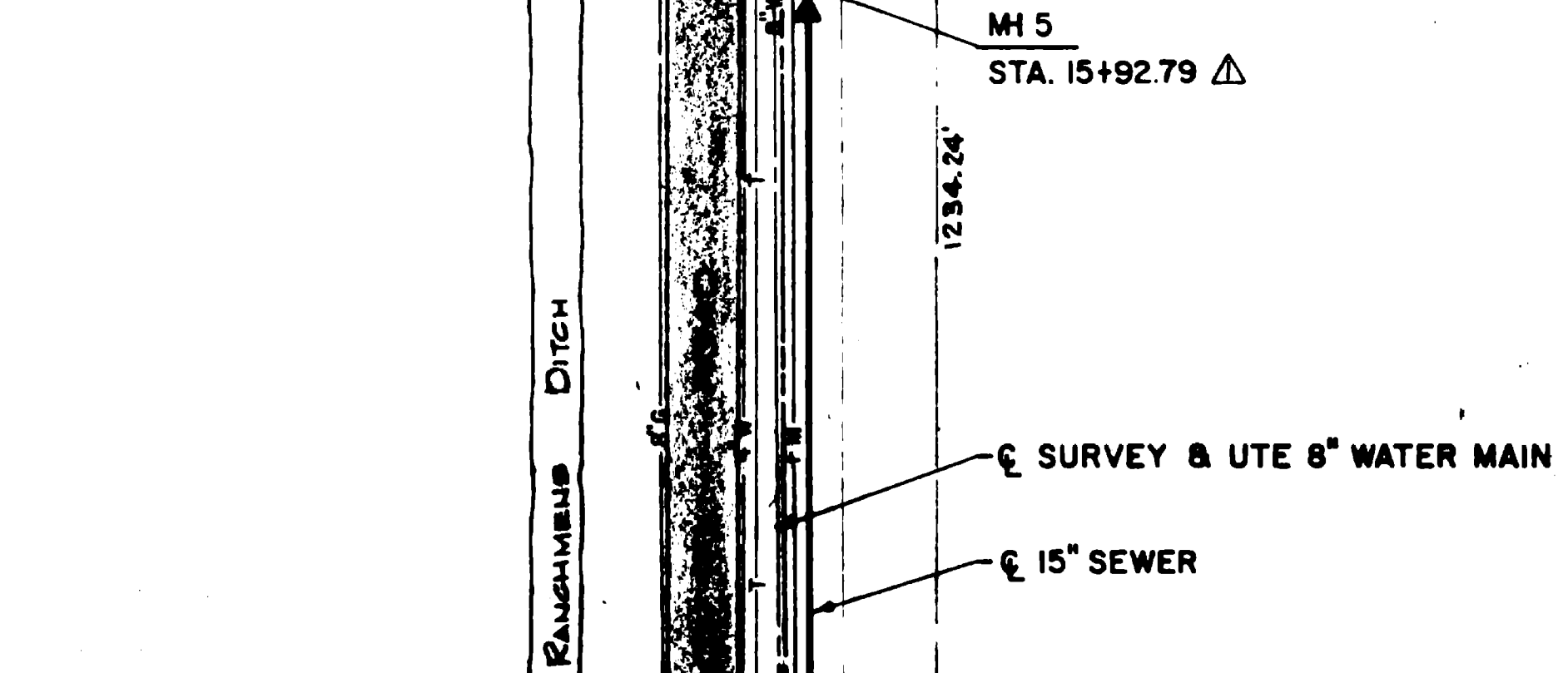
HENNINGSON, DURHAM & RICHARDSON, INC.
ENGINEERS - PLANNERS - CONSULTANTS
GRAND JUNCTION & DENVER, COLORADO

DESIGNED BY	CHECKED BY	DATE
R. V. STOKES	A. TACITO	NOVEMBER 1976
73-39-10	P. ANTONELLI	APPROVED BY
		HENRICHSEN

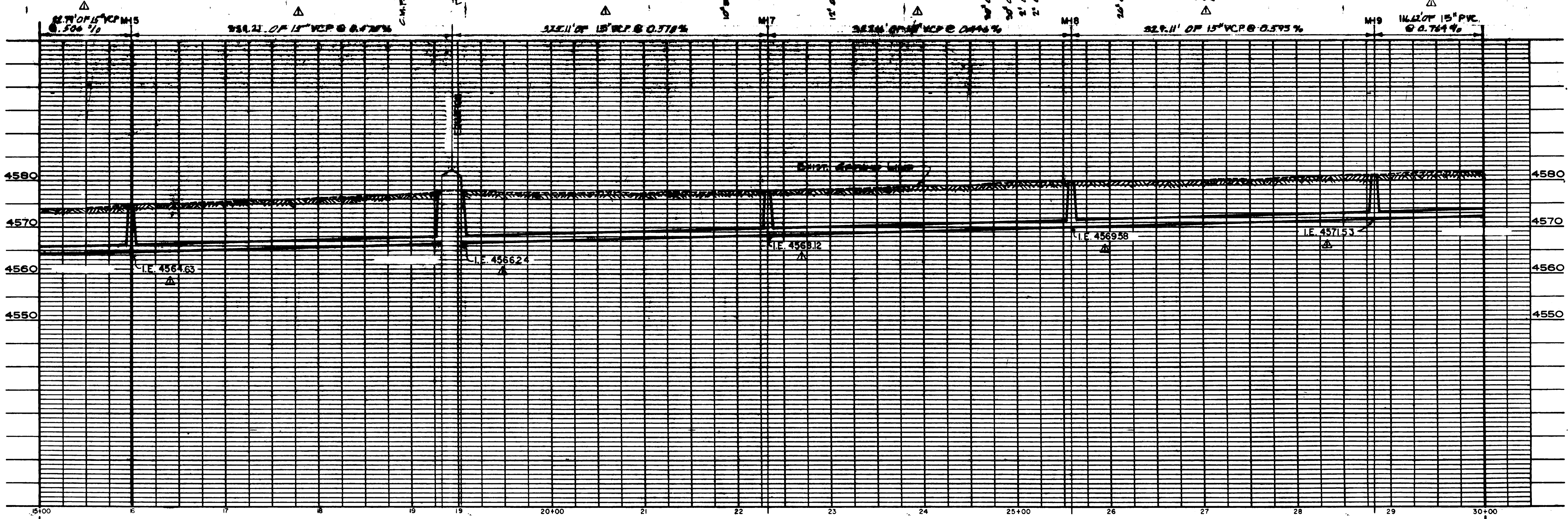


TYPICAL PERMANENT ASPHALT PAVEMENT REPLACEMENT
NO SCALE

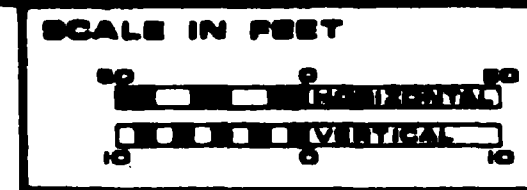
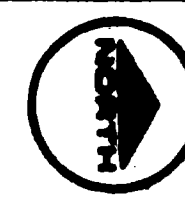
1480 WELTON INC.



NOTE: PLANS BASED ON TBM EL. 4579.32 (Hinge Nail On North Side Of Power Pole At 25th Road & "F" Road.) TBM Should Be Corrected To EL. 4579.73 For Construction.



02-132 -04 AB

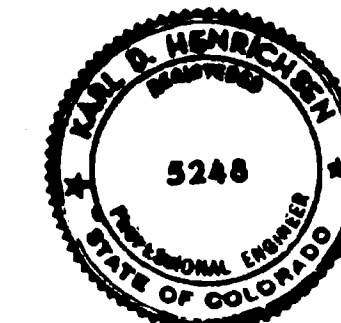


DATE	DESCRIPTION	BY	CHKD	APPROV
11 June 77	As Constructed			

CITY OF GRAND JUNCTION, COLORADO

PARADISE HILLS INTERCEPTOR SEWER

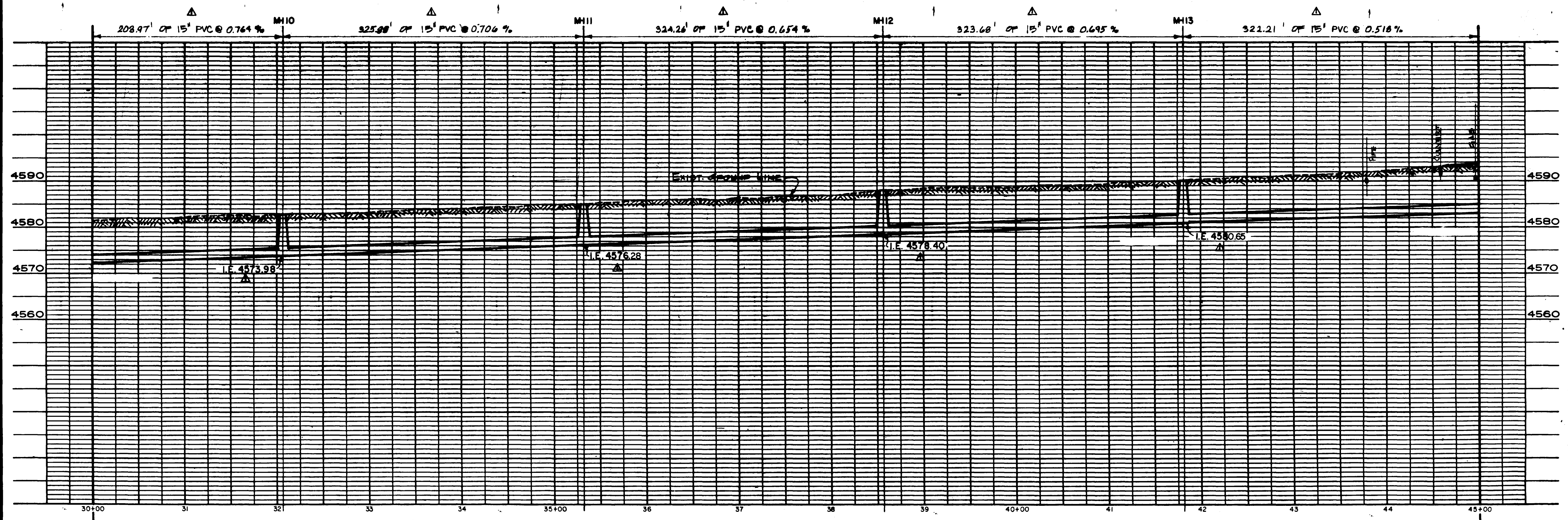
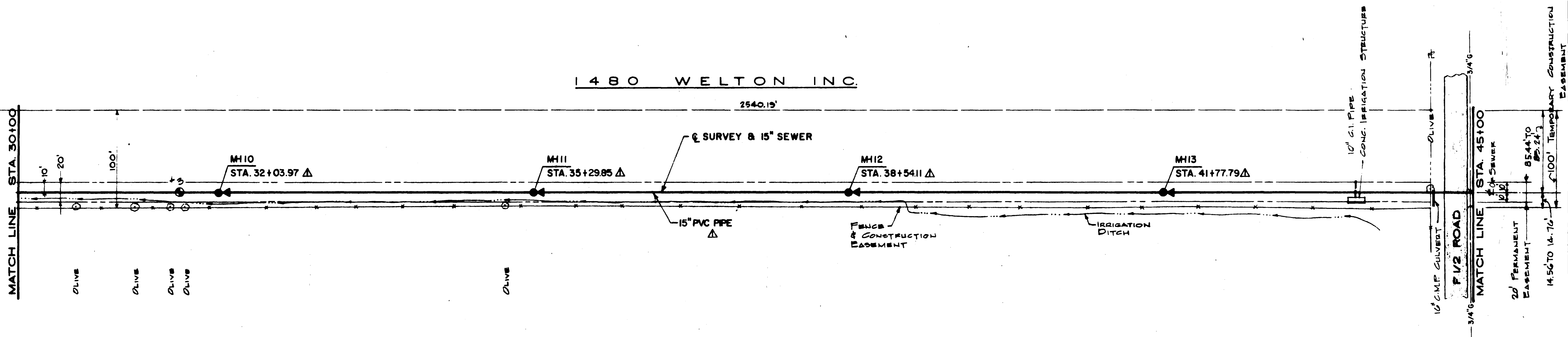
PLAN & PROFILE STA. 30+00 TO 45+00

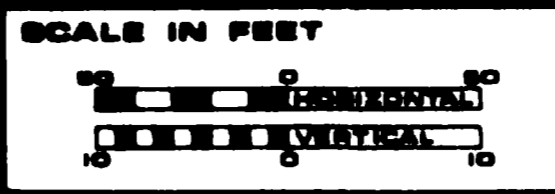
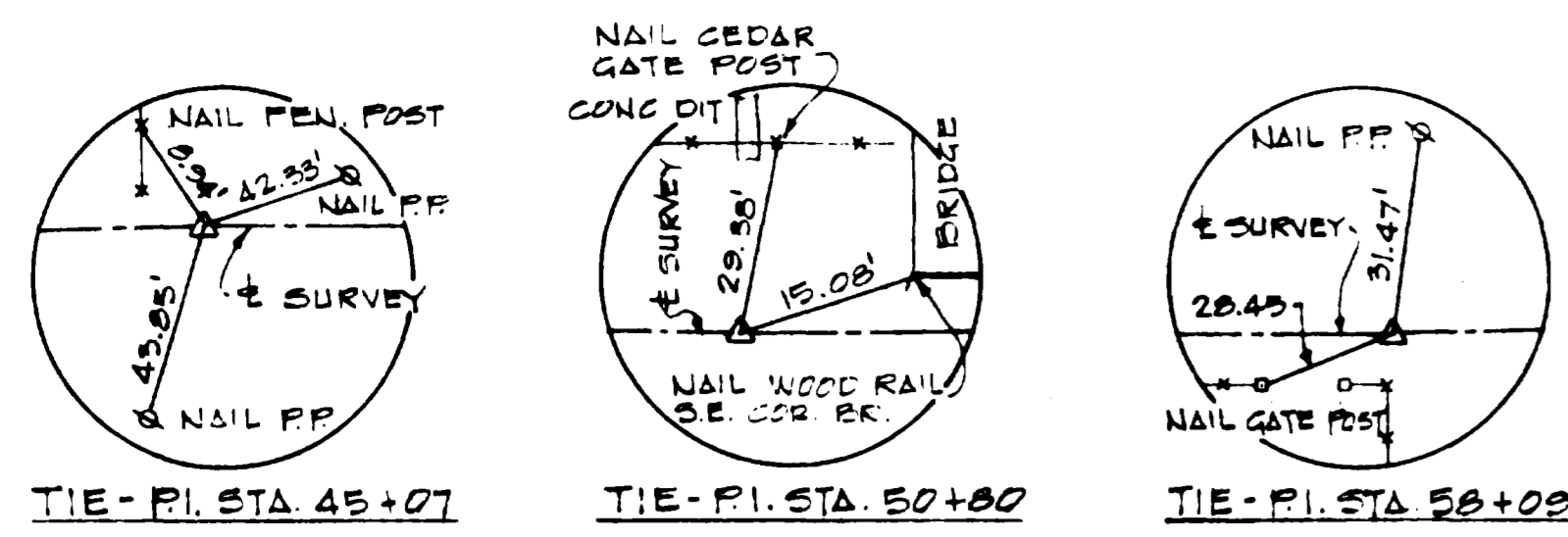


HENNINGSON, DURHAM & RICHARDSON, INC.
ENGINEERS • PLANNERS • CONSULTANTS
GRAND JUNCTION • DENVER, COLORADO

JOB NO. 73-39-10	DESIGNED BY R.V. STOKES	CHECKED BY A. TACITO	DATE NOVEMBER 1976	SHEET 4 OF 12
------------------	-------------------------	----------------------	--------------------	---------------

1480 WELTON INC.
2540.19'





DATE	DESCRIPTION	REVISIONS	SAH	MADE	APPROV
7/24/77	As Constructed				

AS CONSTRUCTED

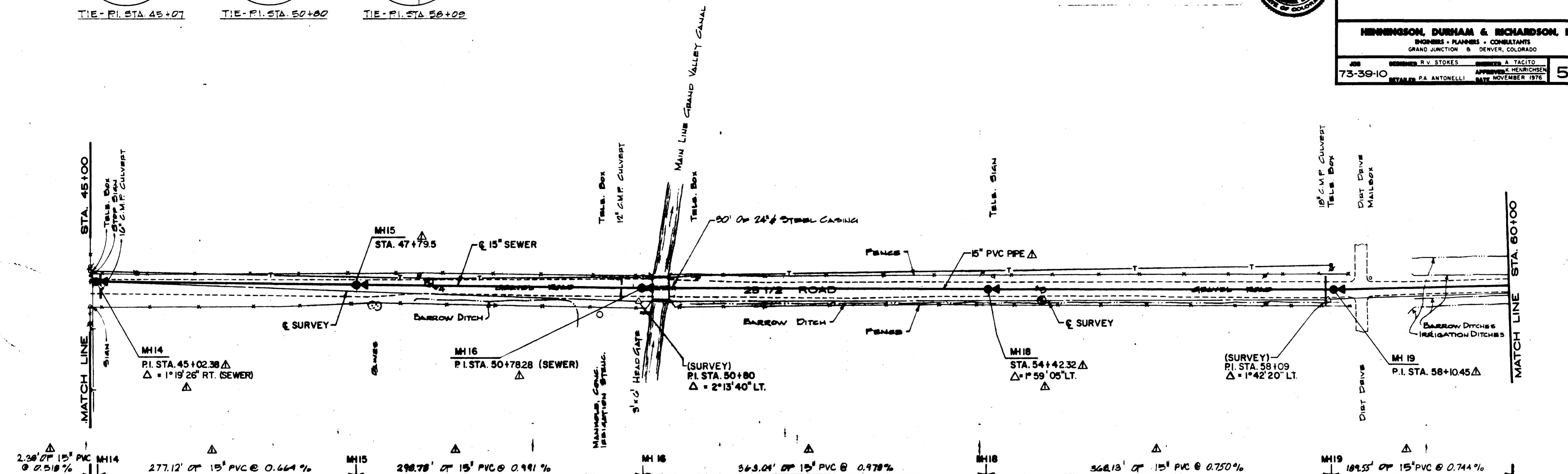


PARADISE HILLS
INTERCEPTOR SEWER

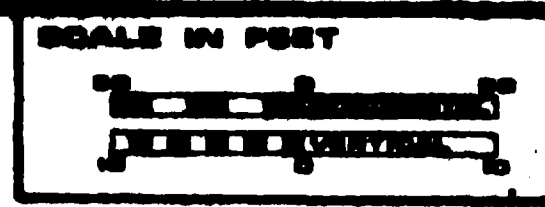
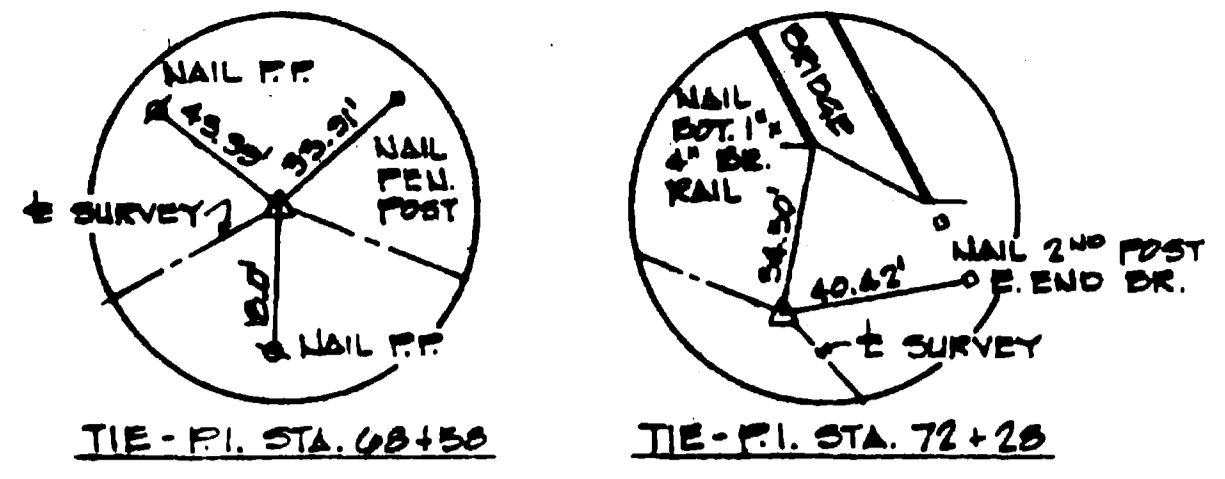
PLAN & PROFILE
STA. 45+00 TO 60+00.

HENNINGSON, DURHAM & RICHARDSON, INC.
ENGINEERS - PLANNERS - CONSULTANTS
GRAND JUNCTION & DENVER, COLORADO

DESIGNED: R.V. STOKES CHECKED: A. TACITO
73-39-10 APPROVED: K. HENNRICHSEN DATE: NOVEMBER 1976 SHEET: 5 of 12



02-132-06AB



DATE	DESCRIPTION	BY	APPROV.
June 77	As Constructed	BAH	RS
		MADE	APPROV.

CITY OF GRAND JUNCTION, COLORADO

PARADISE HILLS INTERCEPTOR SEWER

PLAN & PROFILE STA. 60+00 TO 75+00

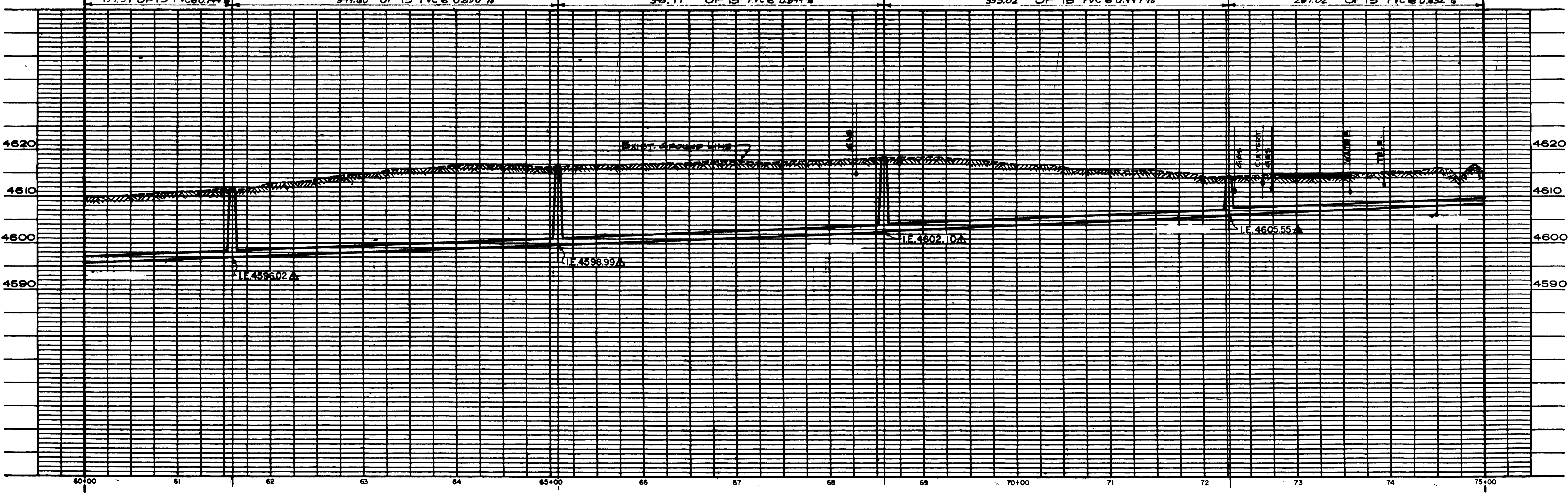
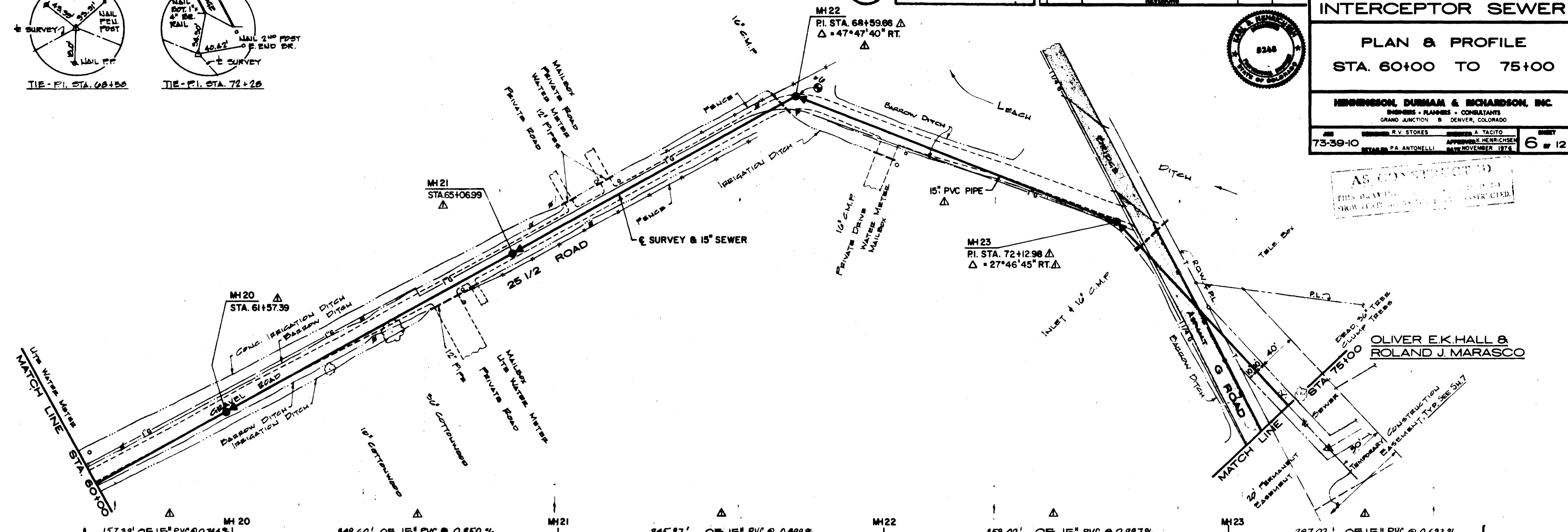
HENNINGSON, DURHAM & RICHARDSON, INC.
 ENGINEERS - PLANNERS - CONSULTANTS
 GRAND JUNCTION & DENVER, COLORADO

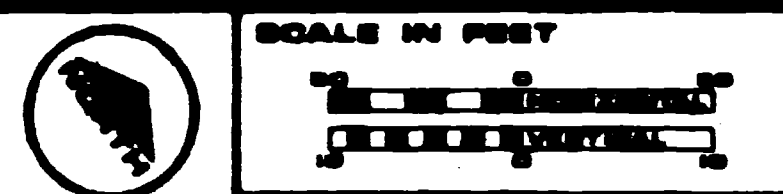
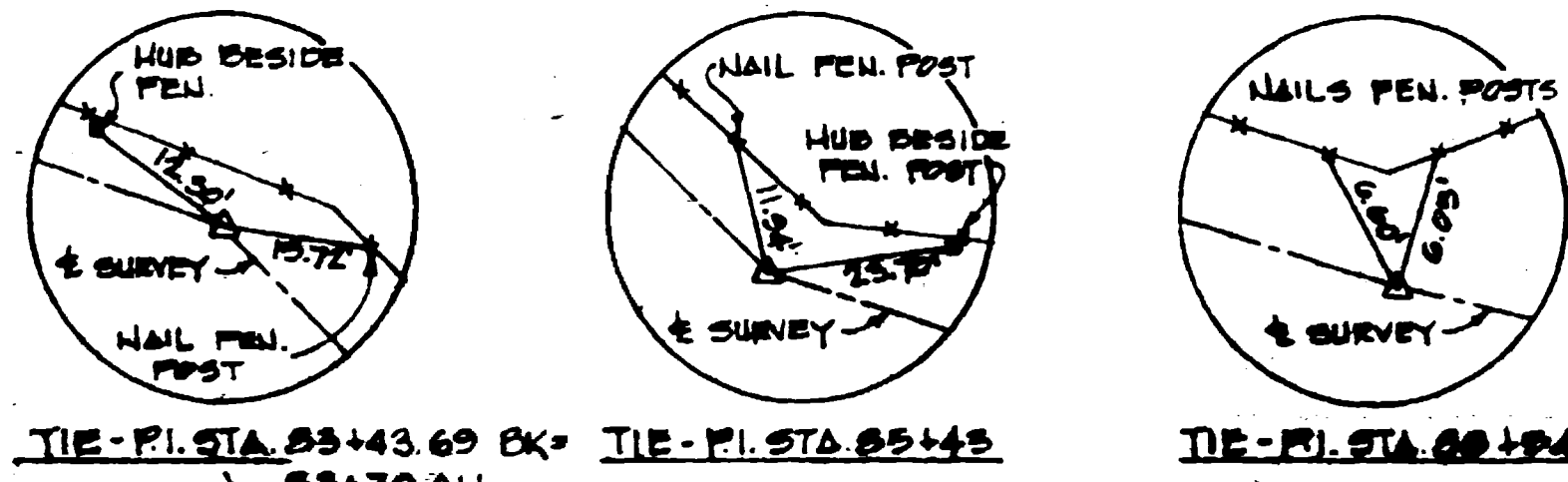
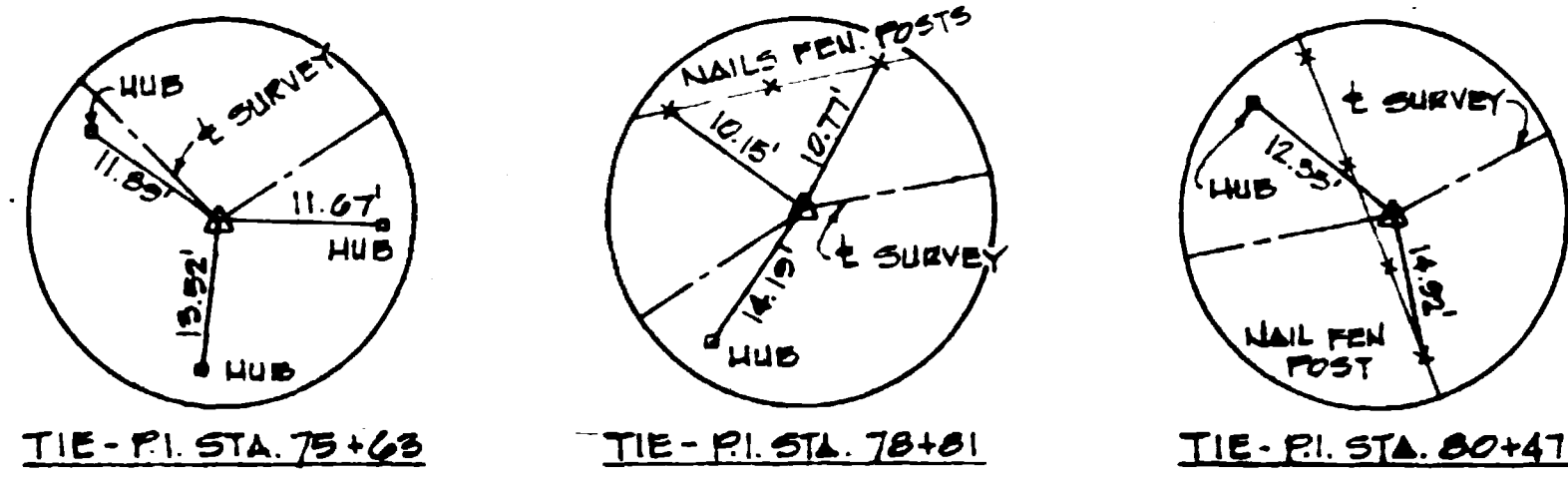
JOB NO. 73-39-10
 ENGINEER: R.V. STOKES
 CHECKED: PA. ANTONELLI
 DATE: NOVEMBER 1976



AS CONSTRUCTED
 THIS DRAWING IS TO BE USED TO SHOW THE SEWER AS CONSTRUCTED.

OLIVER E.K. HALL & ROLAND J. MARASCO



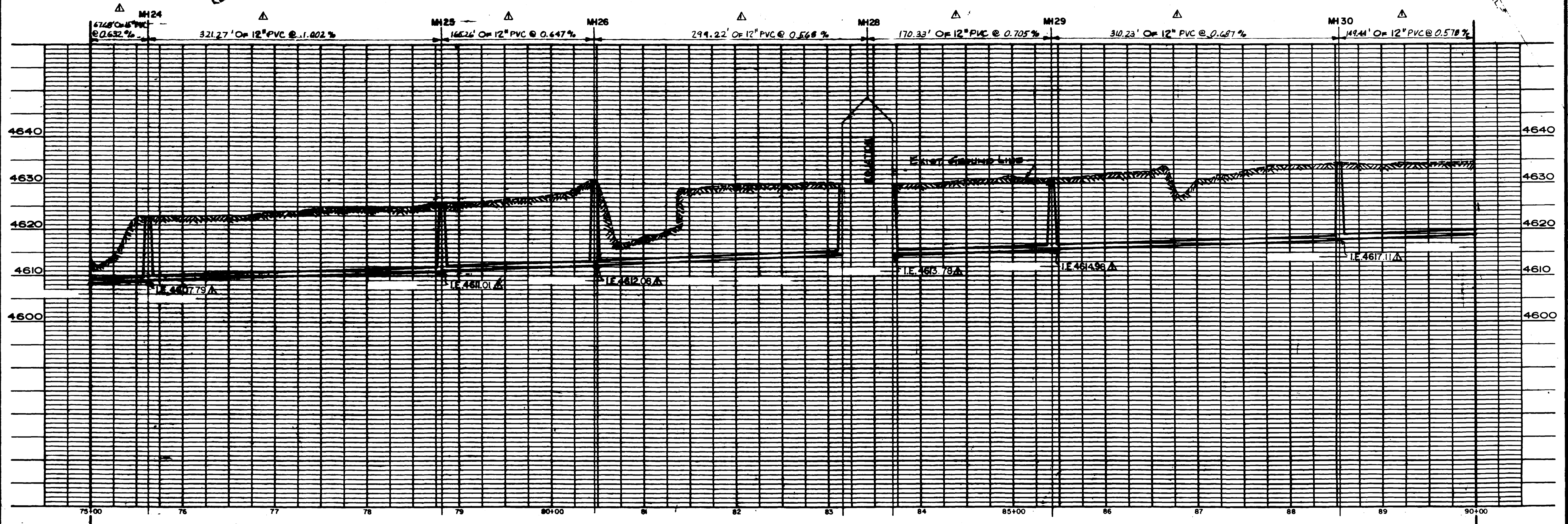
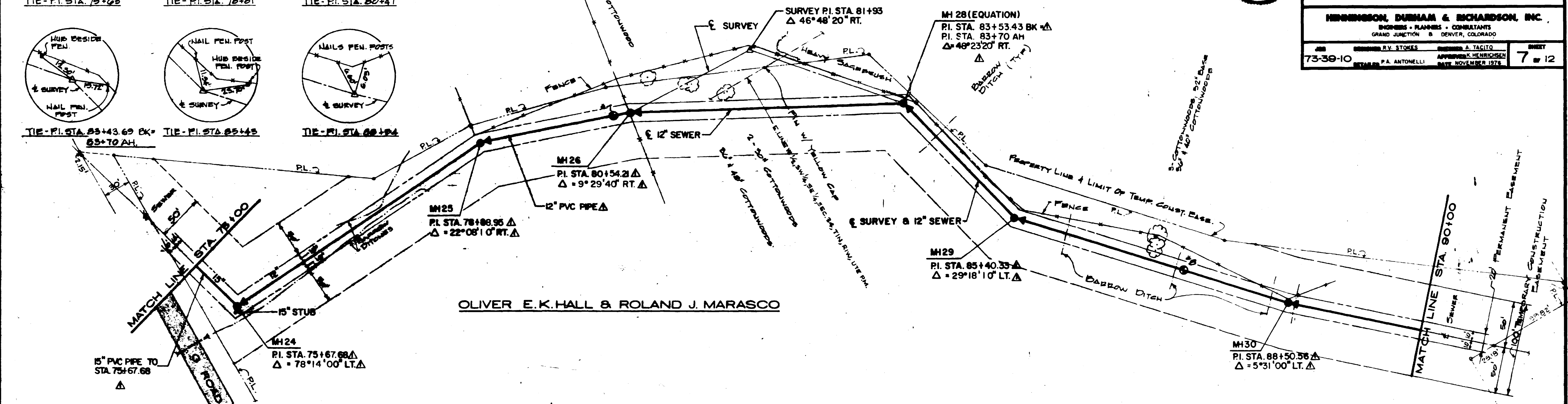


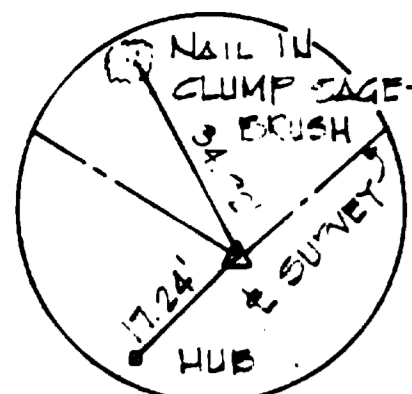
DATE	DESCRIPTION	BY	APPROVED
7/27/78	AS CONSTRUCTED	BAH	RS
7/27/78	REVISION		

CITY OF GRAND JUNCTION, COLORADO
PARADISE HILLS INTERCEPTOR SEWER
PLAN & PROFILE
STA. 75+00 TO 90+00

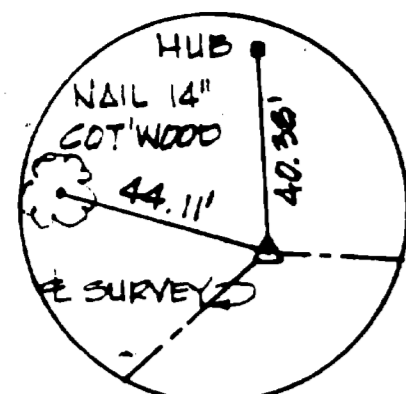
HENNINGSON, DURHAM & RICHARDSON, INC.
ENGINEERS - PLANNERS - CONSULTANTS
GRAND JUNCTION & DENVER, COLORADO
DESIGNED BY: RY. STOKES
CHECKED BY: P.A. ANTONELLI
APPROVED BY: KENNETH HENNINGSON
DATE: NOVEMBER 1978

NOTE:
MANHOLE NO 27 WAS
NOT USED.

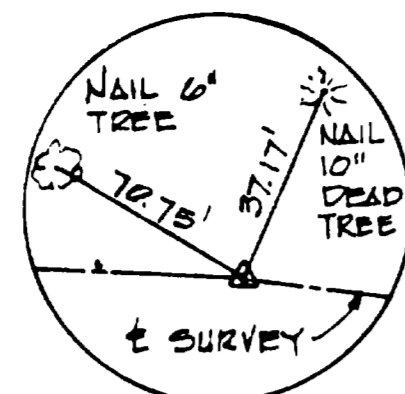




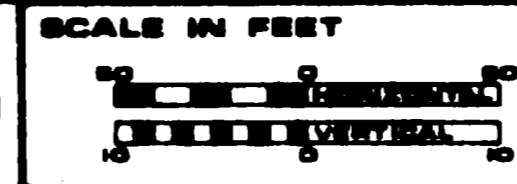
TIE-PI. STA. 93+16



TIE-PI. STA. 95+51



TIE-PI. STA. 99+00



DATE	DESCRIPTION	MADE	APPROV
11 JULY 77	AS CONSTRUCTED	BAH	RS
	REVISIONS		

CITY OF GRAND JUNCTION, COLORADO

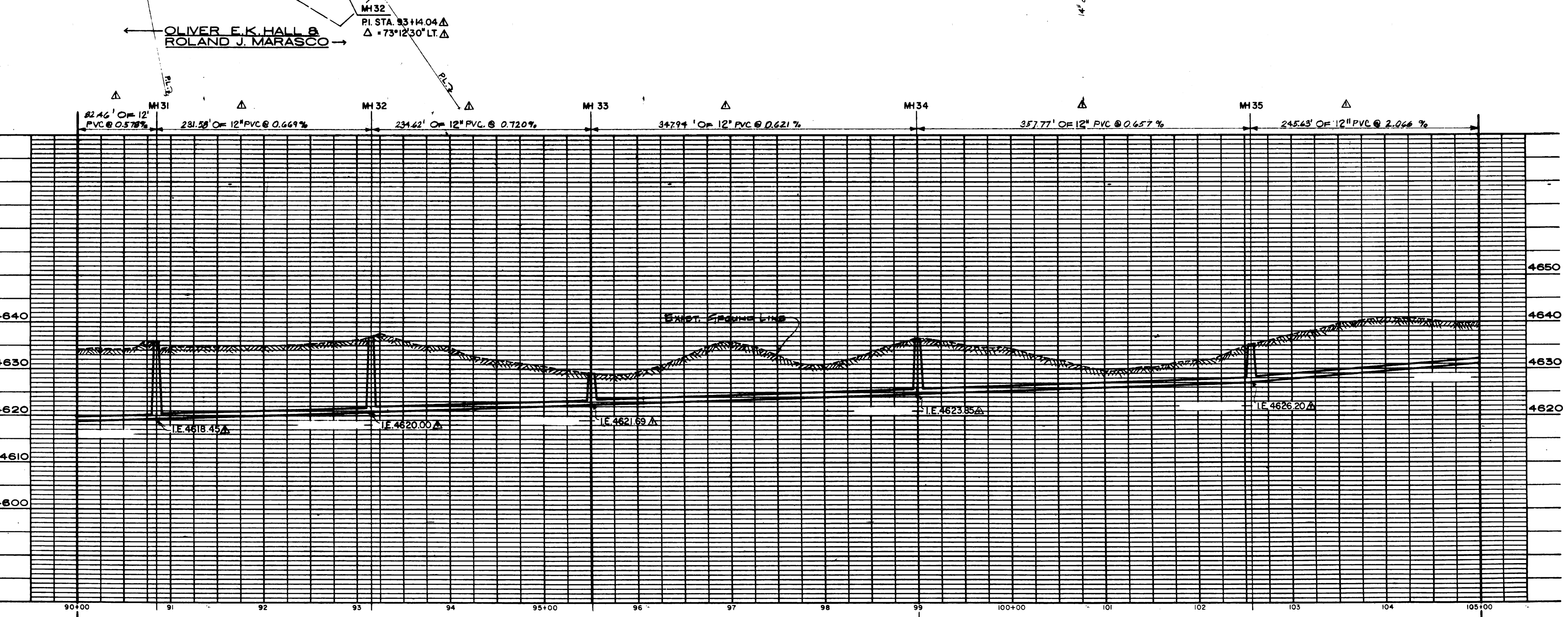
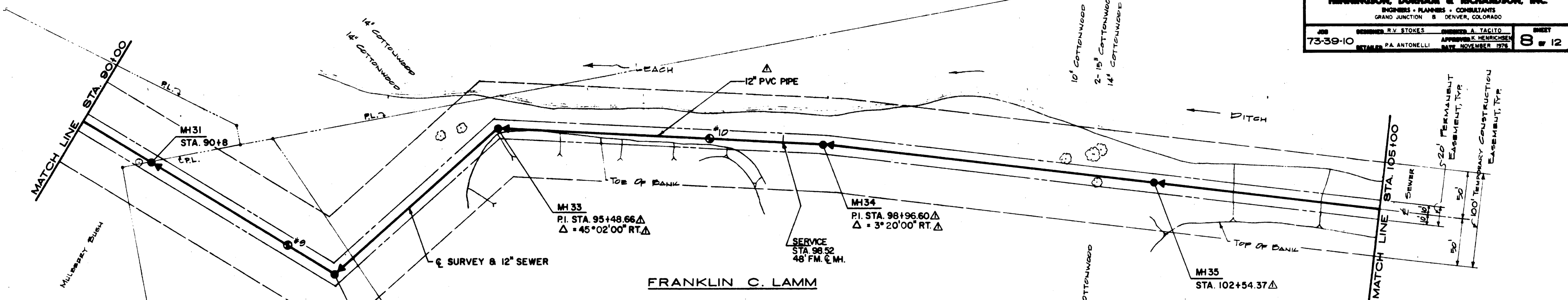
PARADISE HILLS INTERCEPTOR SEWER

PLAN & PROFILE STA. 90+00 TO 105+00

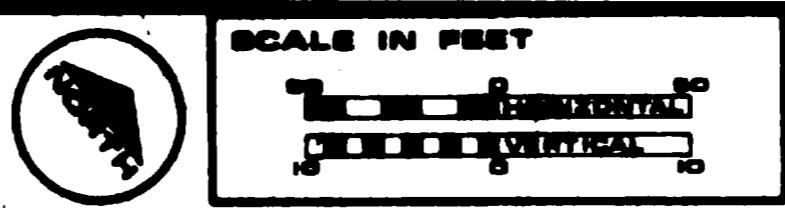
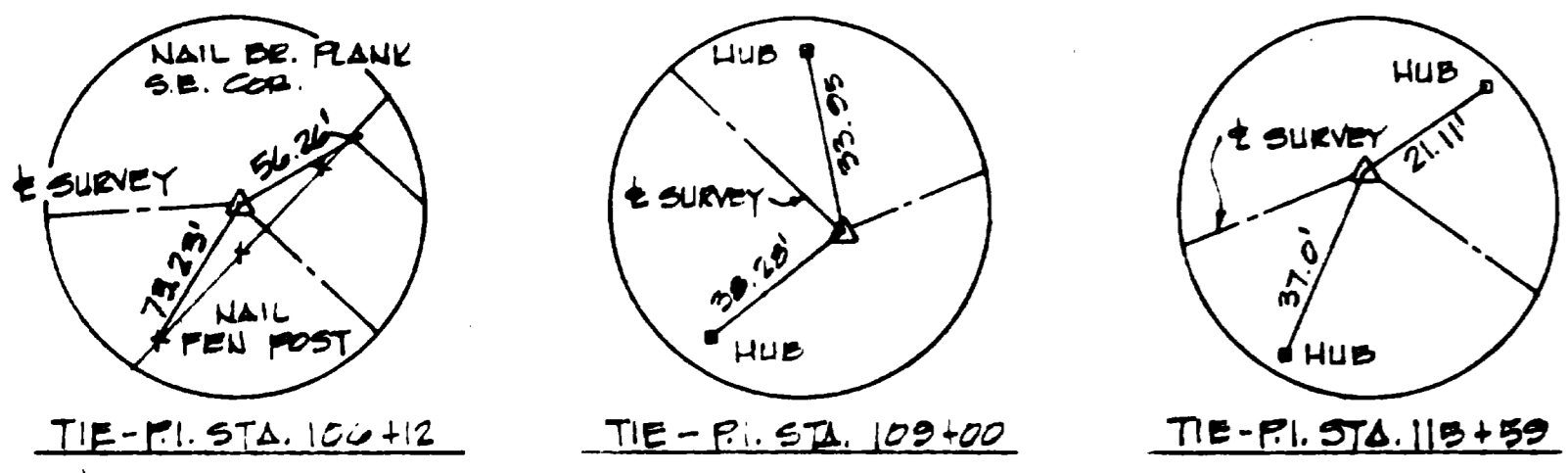
HERRINGSON, DURNAM & RICHARDSON, INC.
 ENGINEERS • PLANNERS • CONSULTANTS
 GRAND JUNCTION & DENVER, COLORADO

DESIGNED BY: R.V. STOKES
 CHECKED BY: A. TACITO
 DRAWN BY: P.A. ANTONELLI
 DATE: NOVEMBER 1978

PROJECT NO. 73-39-10
 SHEET NO. 8 OF 12



02-132-09 AB



DATE	11 July 77	As Constructed	BAH	RS
DESCRIPTION	REVISIONS		MADE	APPROV

CITY OF GRAND JUNCTION, COLORADO

PARADISE HILLS INTERCEPTOR SEWER

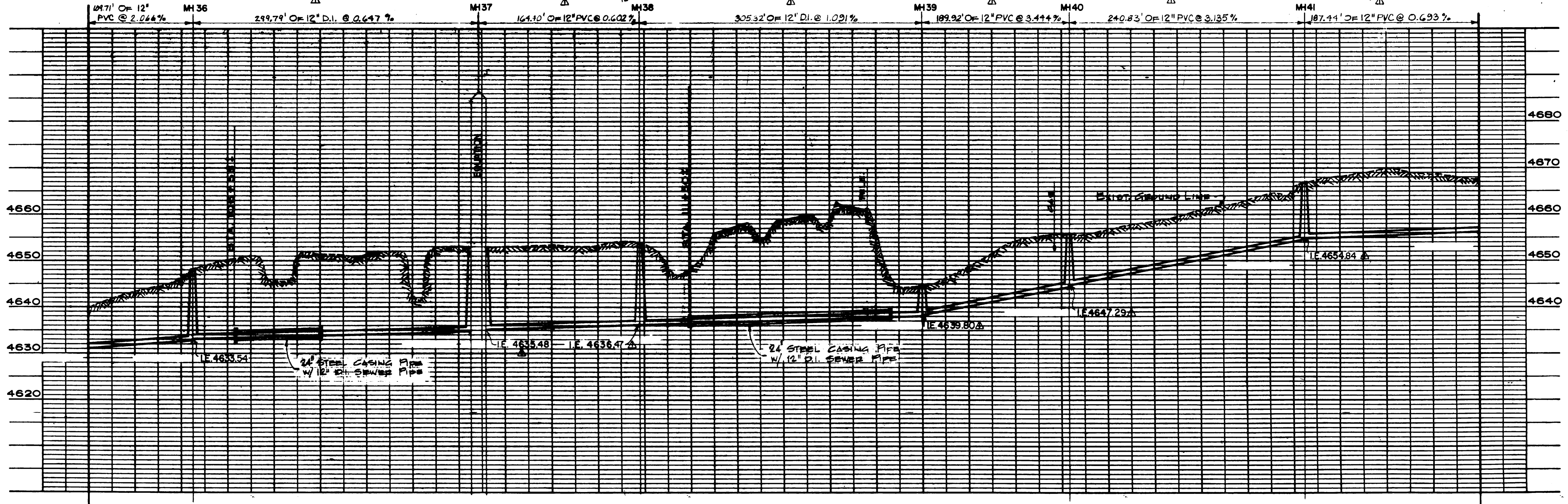
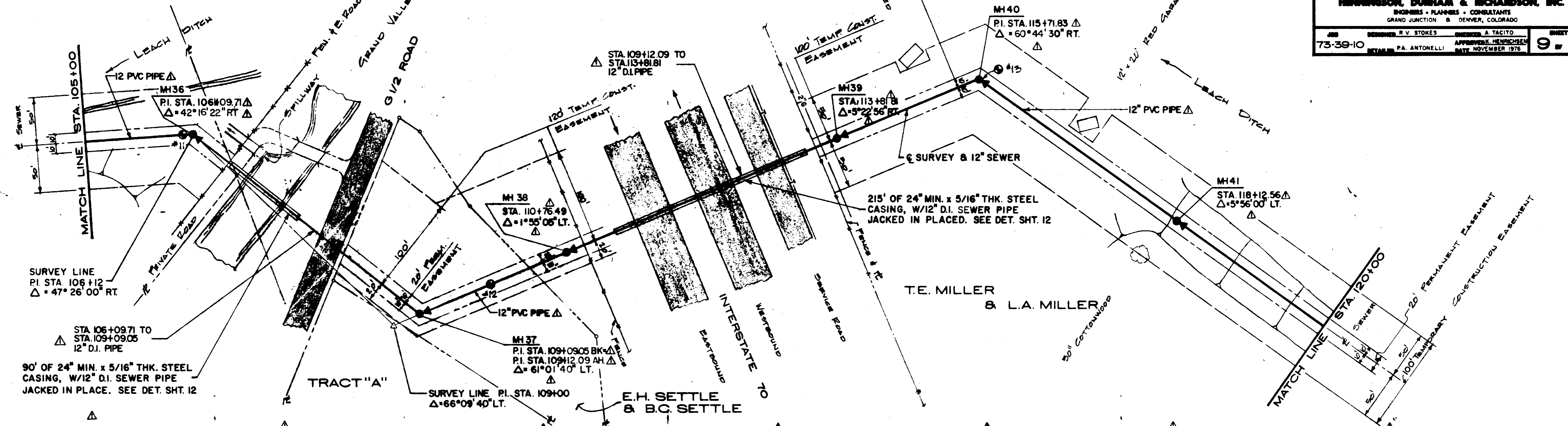
PLAN & PROFILE

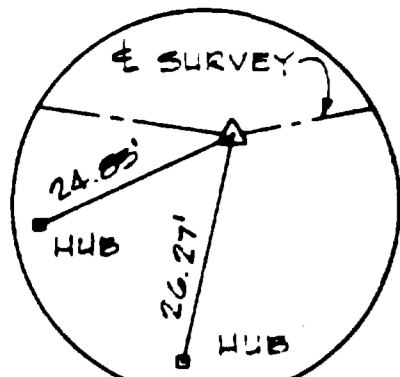
STA. 105+00 TO 120+00

HENNINGSON, DURHAM & RICHARDSON, INC.
 ENGINEERS - PLANNERS - CONSULTANTS
 GRAND JUNCTION & DENVER, COLORADO

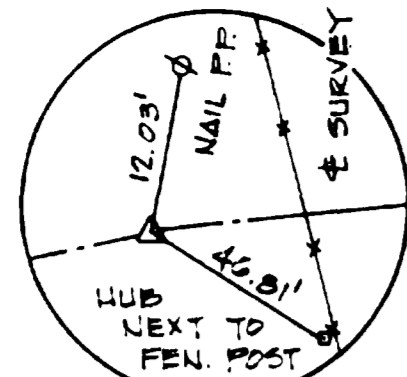
JOB NUMBER: 73-39-10
 ENGINEER: R.V. STOKES
 CHECKER: A. TACITO
 APPROVER: K. HENNINGSON
 DATE: NOVEMBER 1976

Sheet 9 of 12





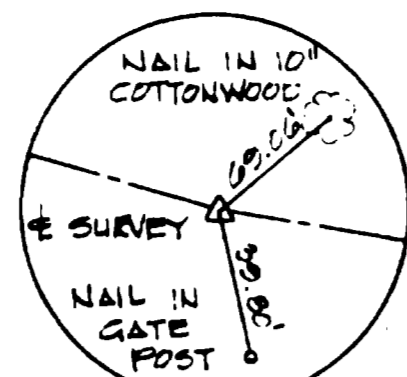
TIE-PI STA. 120+65



TIE-PI STA. 123+81

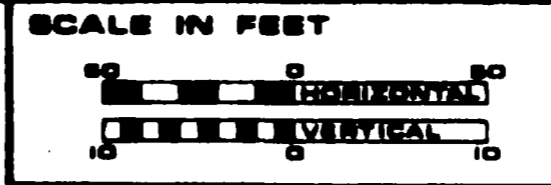


TIE-PI STA. 126+49



TIE-PI STA. 128+69

C.L. COOPER & B.J. COOPER



DATE	DESCRIPTION	MADE	APPROV
15.77	A & CONSTRUCTED	BAH	RS

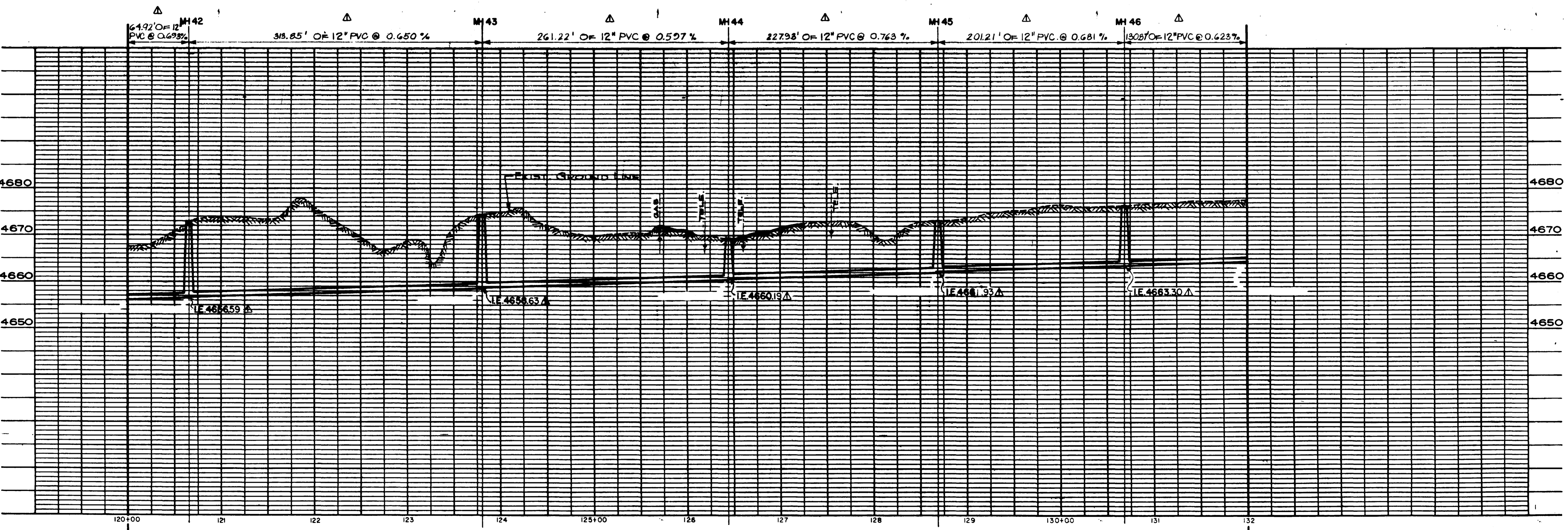
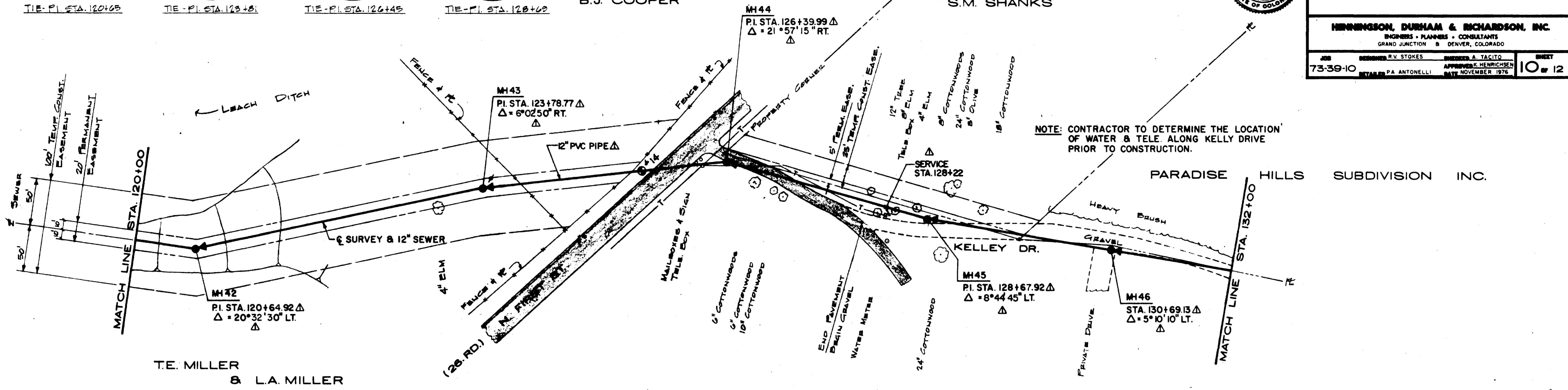
CITY OF GRAND JUNCTION, COLORADO

PARADISE HILLS INTERCEPTOR SEWER

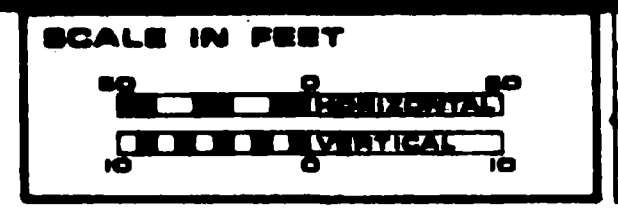
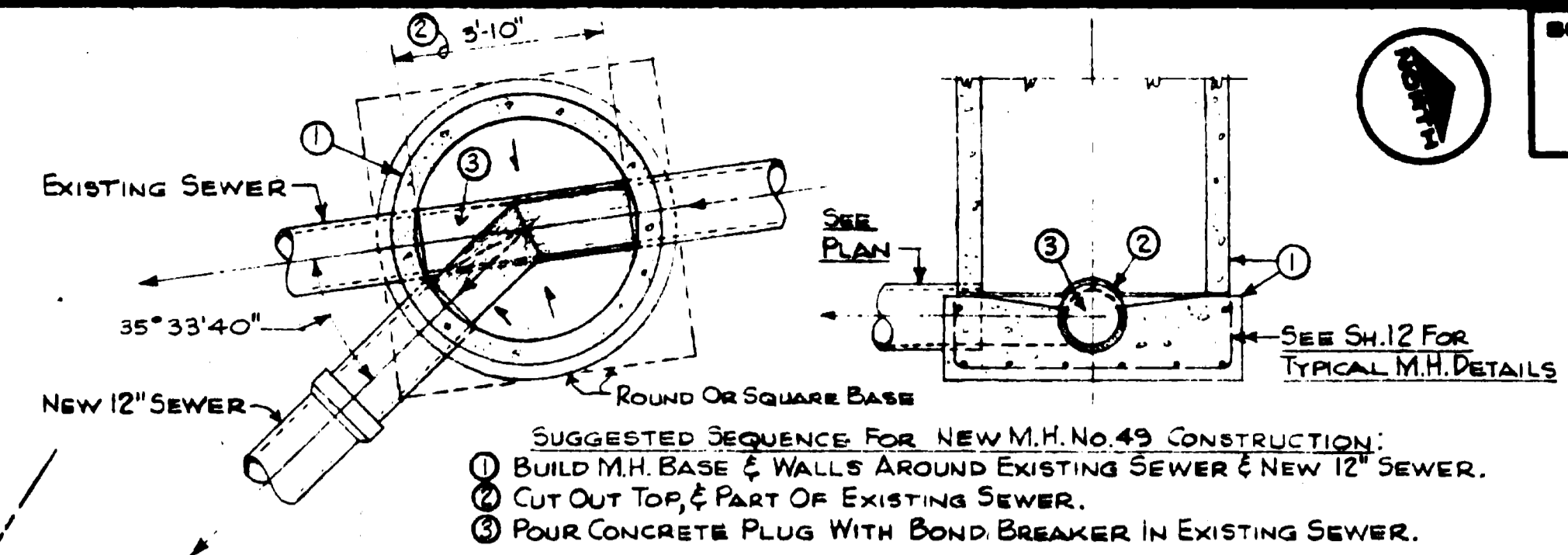
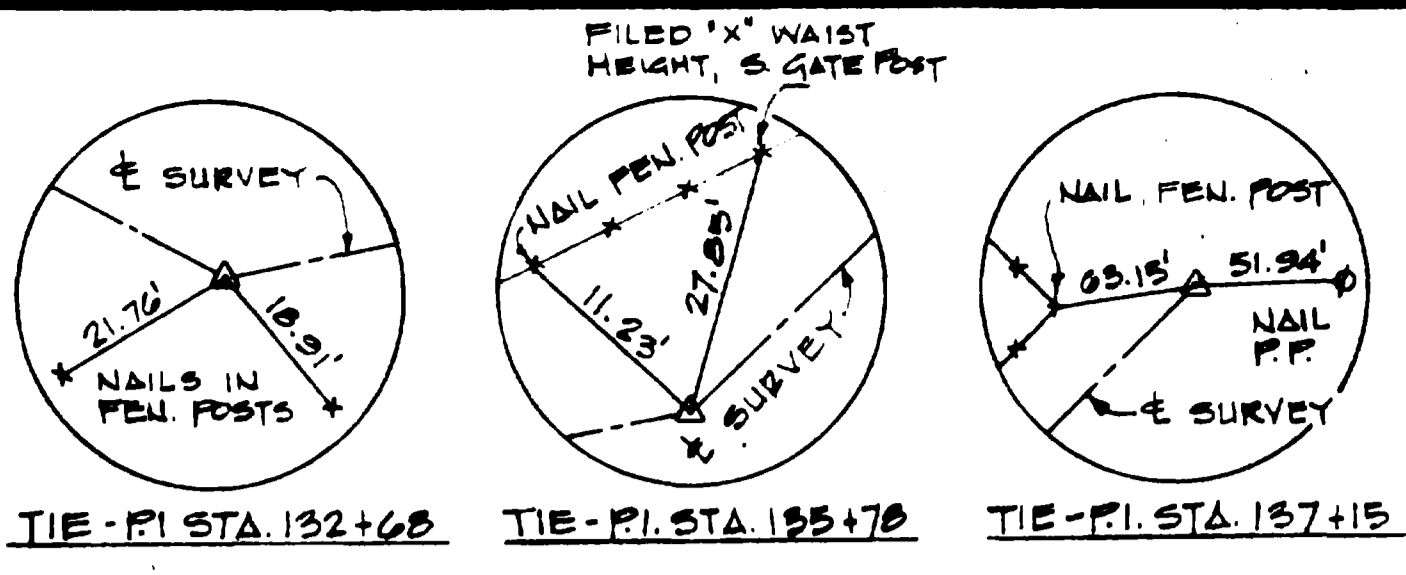
PLAN & PROFILE STA. 120+00 TO 132+00

HERRINGTON, DURHAM & RICHARDSON, INC.
ENGINEERS - PLANNERS - CONSULTANTS
GRAND JUNCTION & DENVER, COLORADO

JOB	DESIGNED BY	DRAWN BY	DATE
73-39-10	R.V. STOKES	P.A. ANTONELLI	NOVEMBER 1976



02-132-11 AB



DATE	DESCRIPTION	MADE	APPROV.
June 15, 77	A.A. CONSTRUCTION	BAH	RS

CITY OF GRAND JUNCTION, COLORADO

PARADISE HILLS INTERCEPTOR SEWER

PLAN & PROFILE

STA. 132+00 TO 137+15 E.O.L.

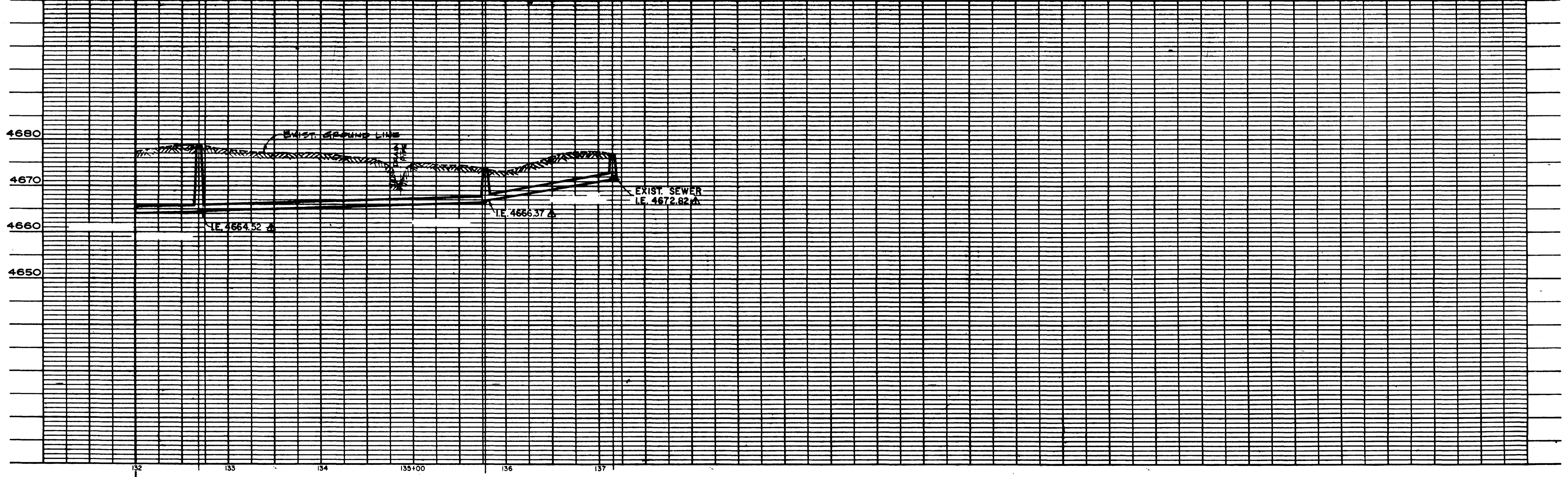
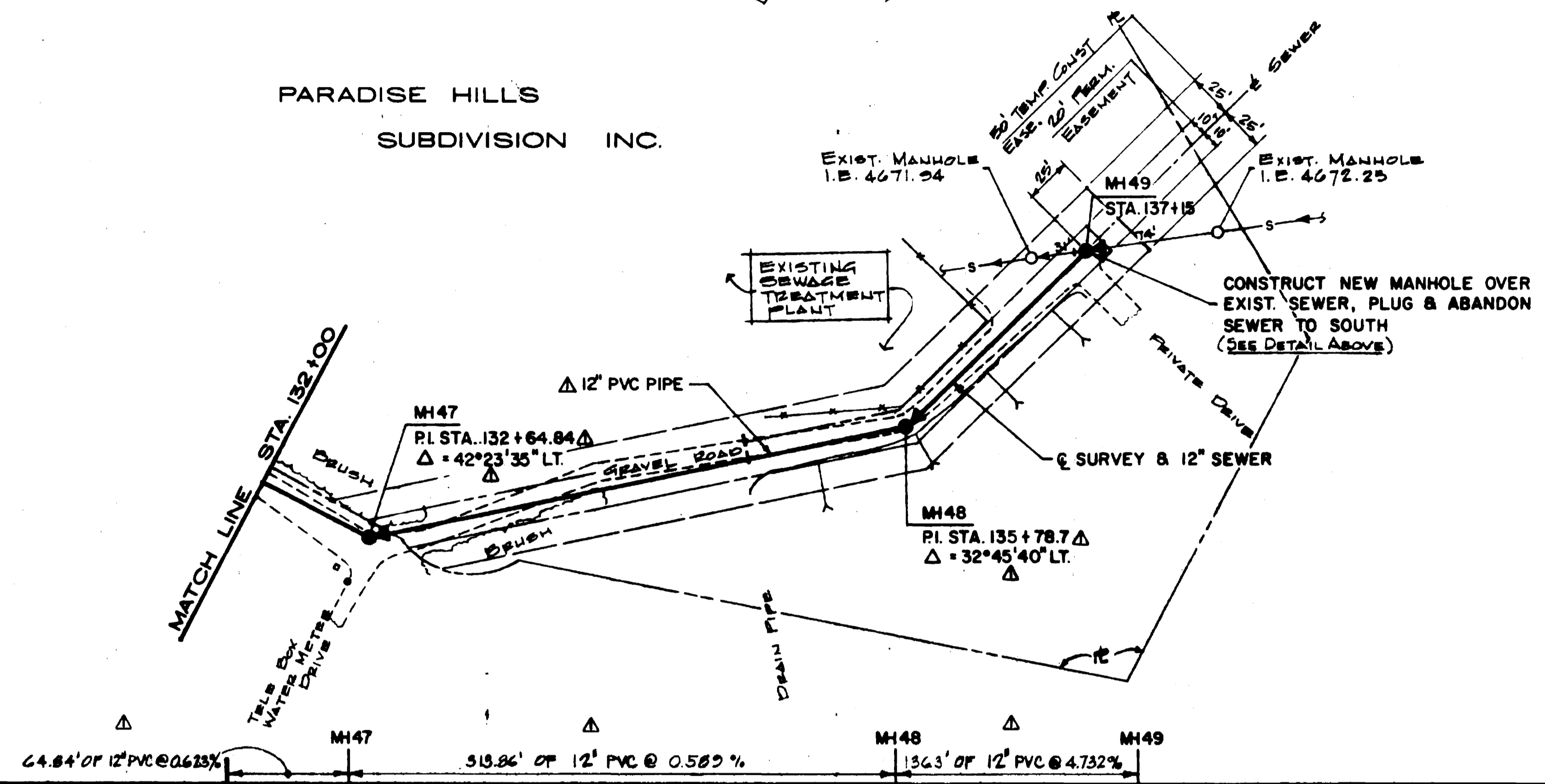
HENNINGSON, DURHAM & RICHARDSON, INC.
ENGINEERS - PLANNERS - CONSULTANTS
GRAND JUNCTION & DENVER, COLORADO

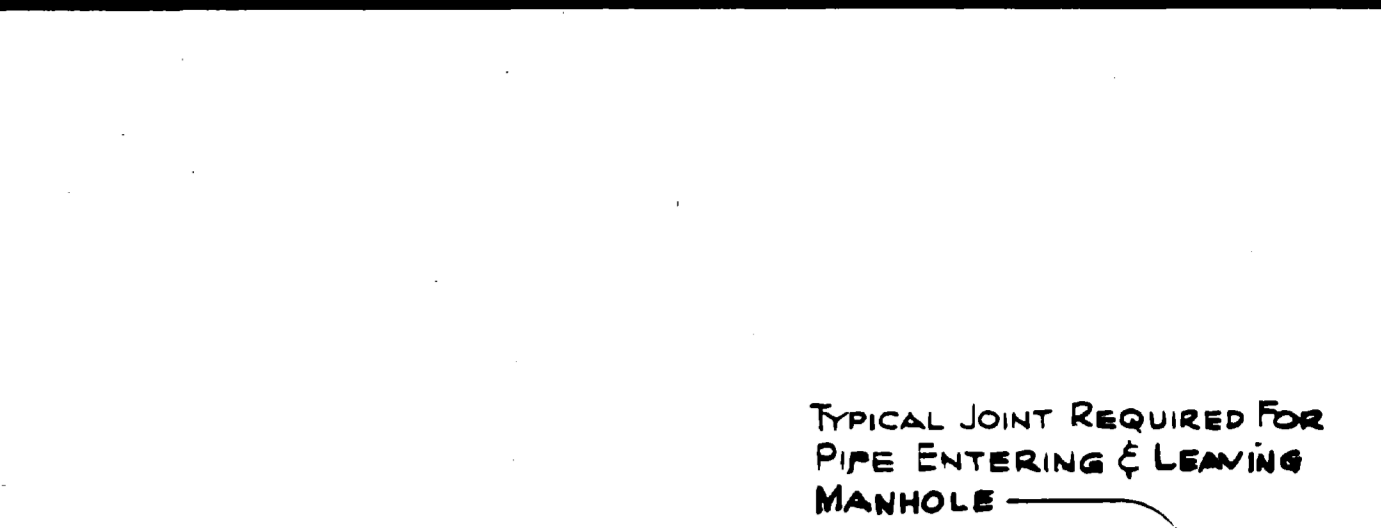
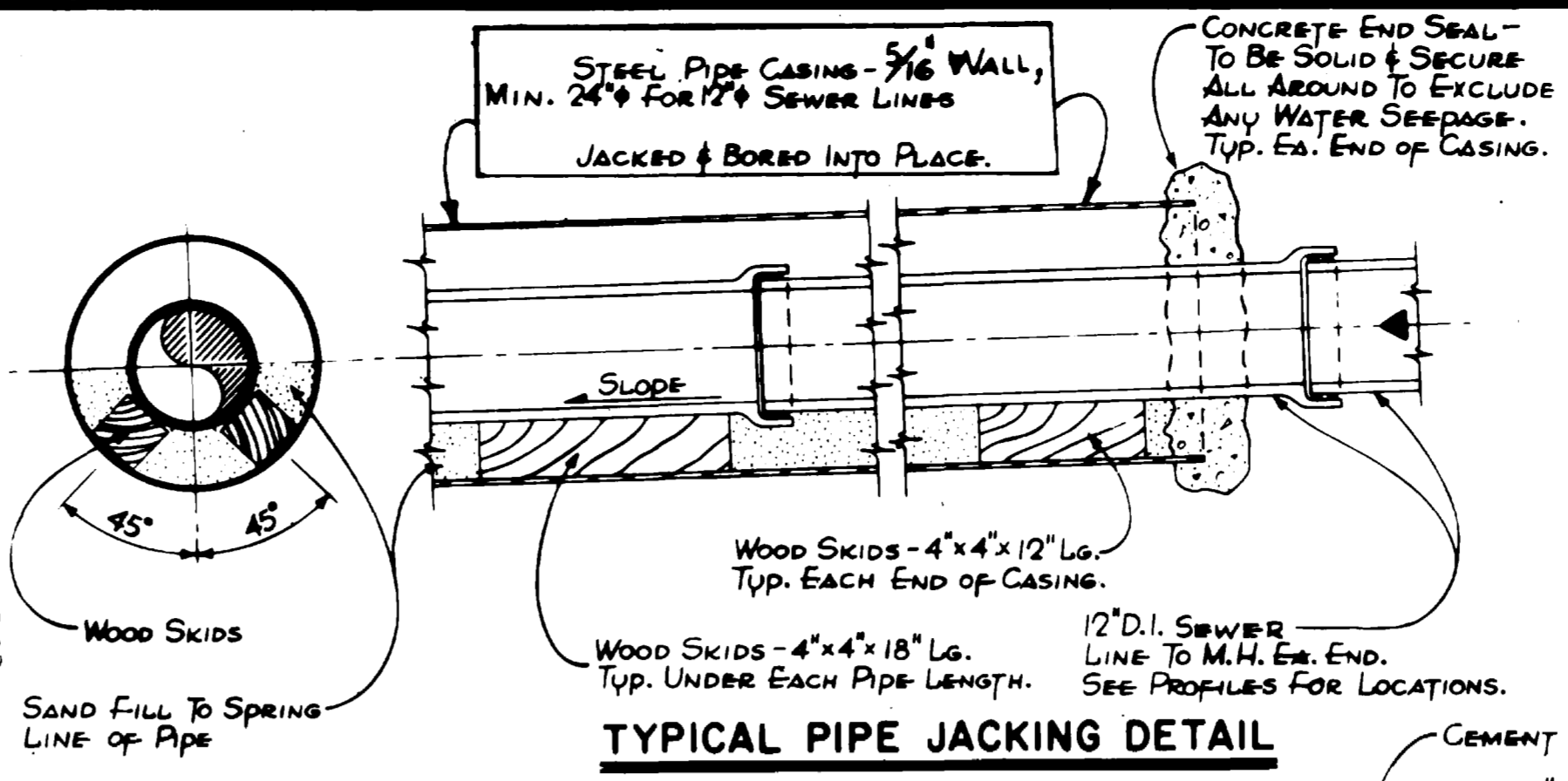
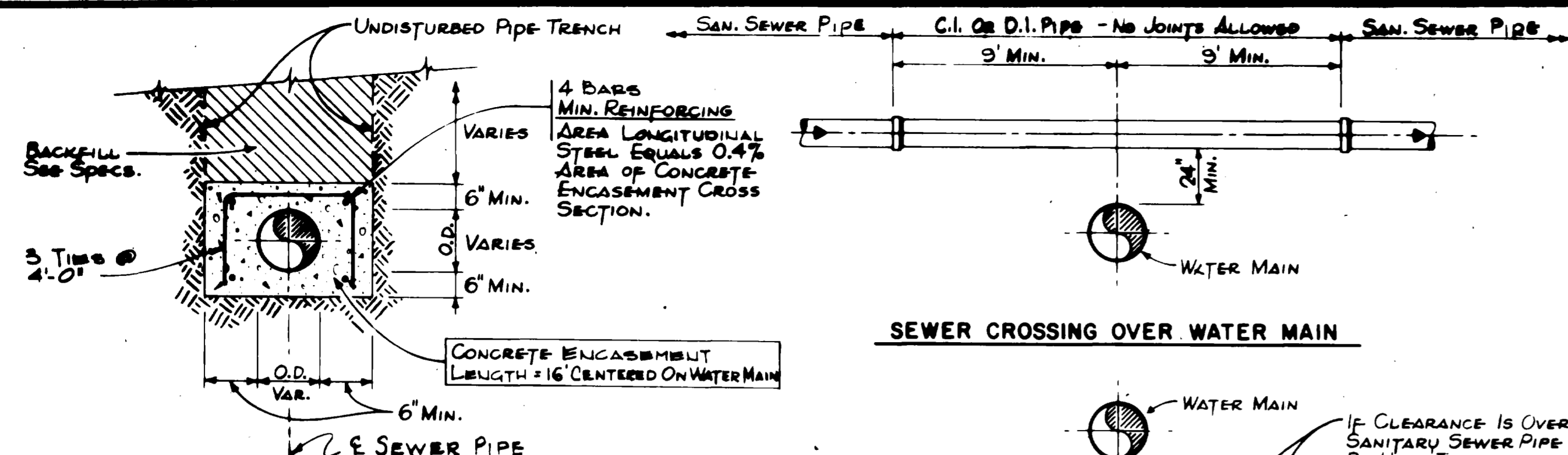
JOB NO. 73-38-10
DESIGNED BY R.V. STOKES
CHECKED BY A. TACITO
APPROVED BY HENNINGSON
DATE NOVEMBER 1976

5248

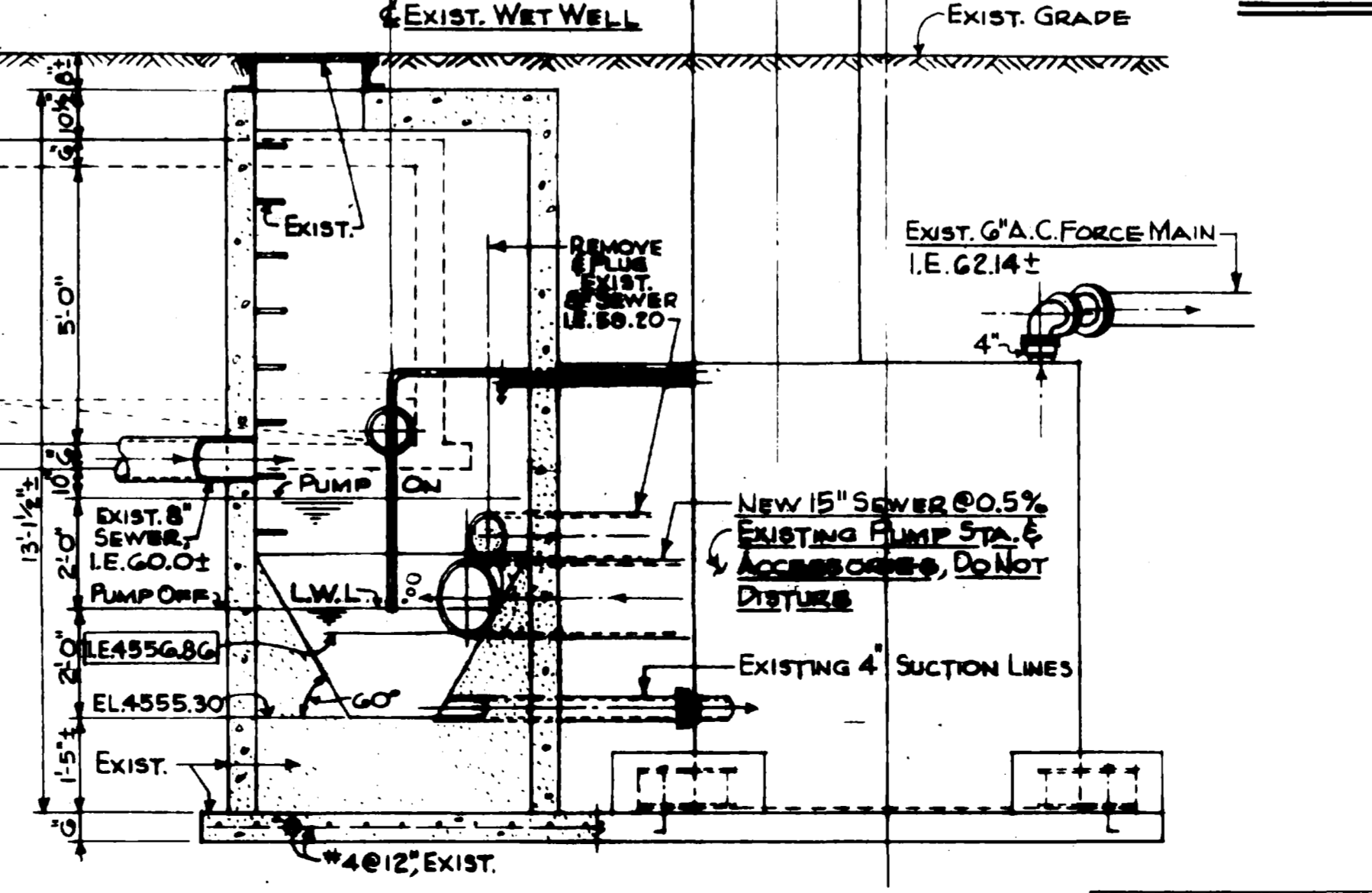
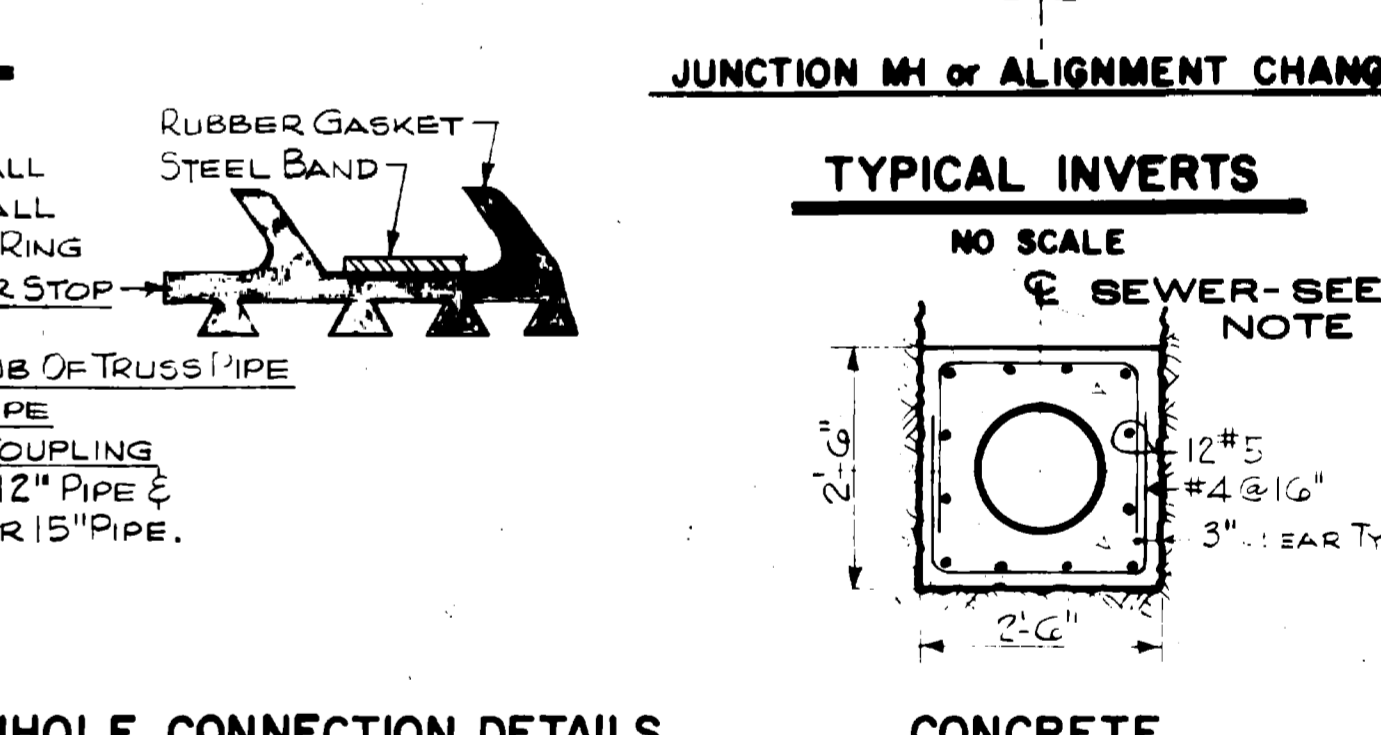
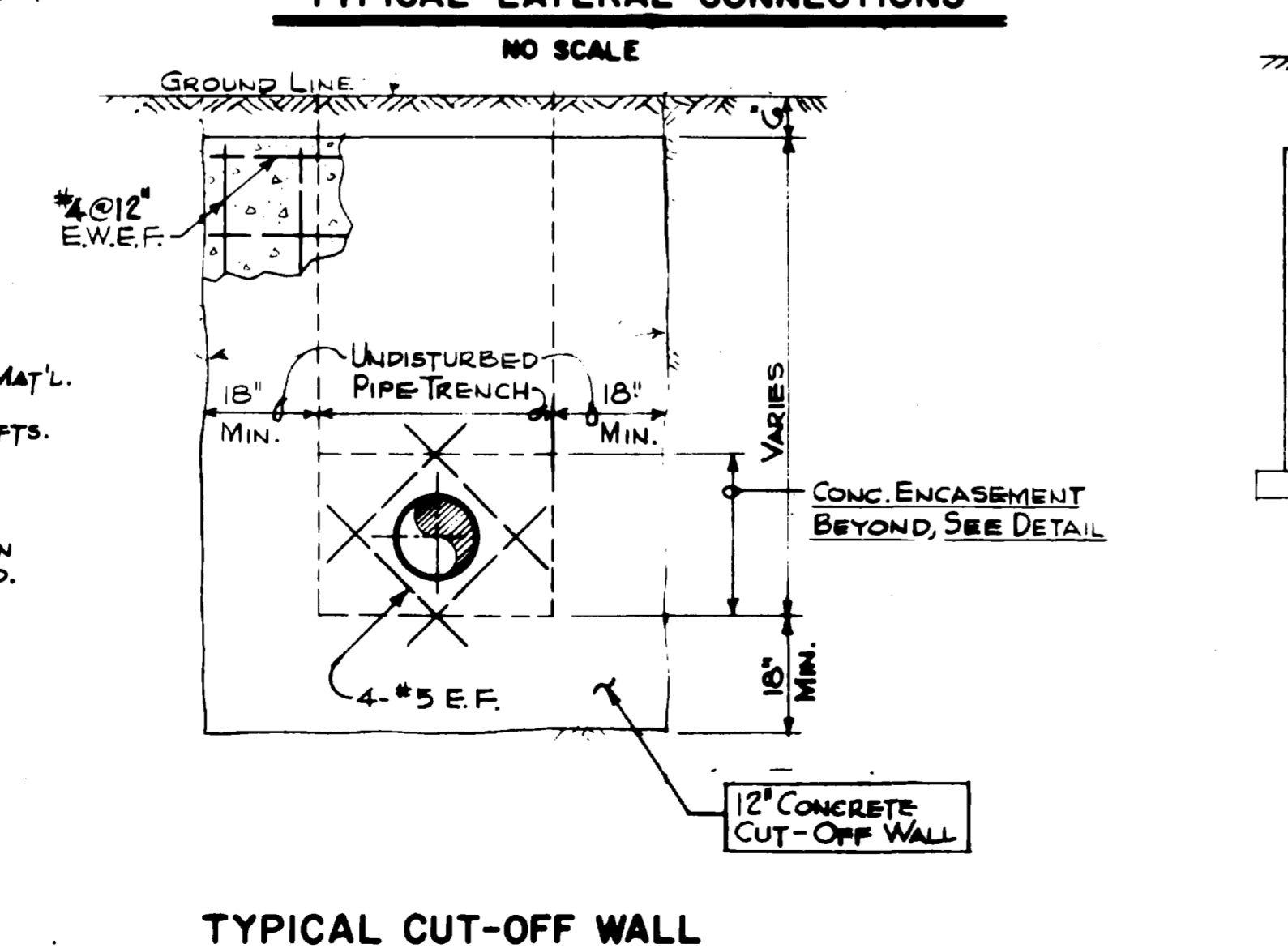
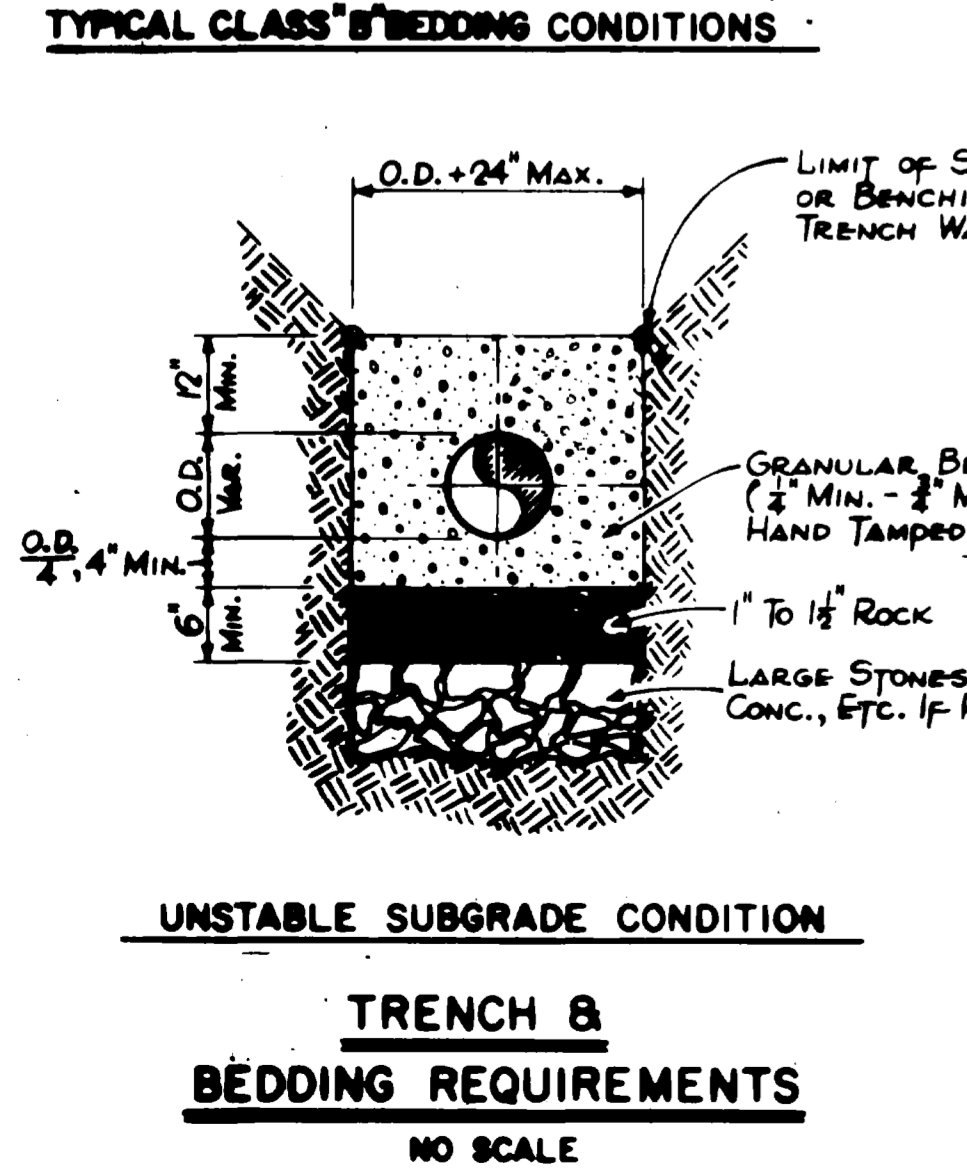
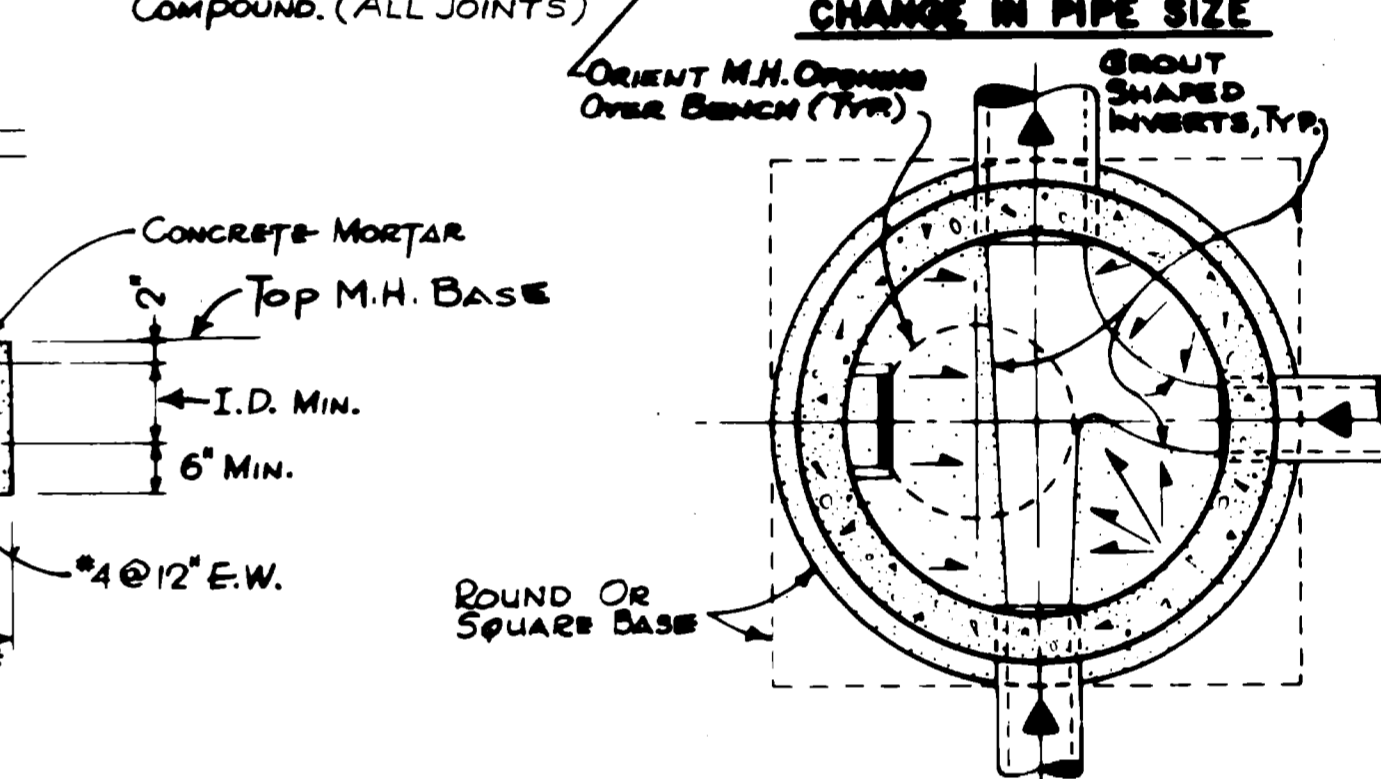
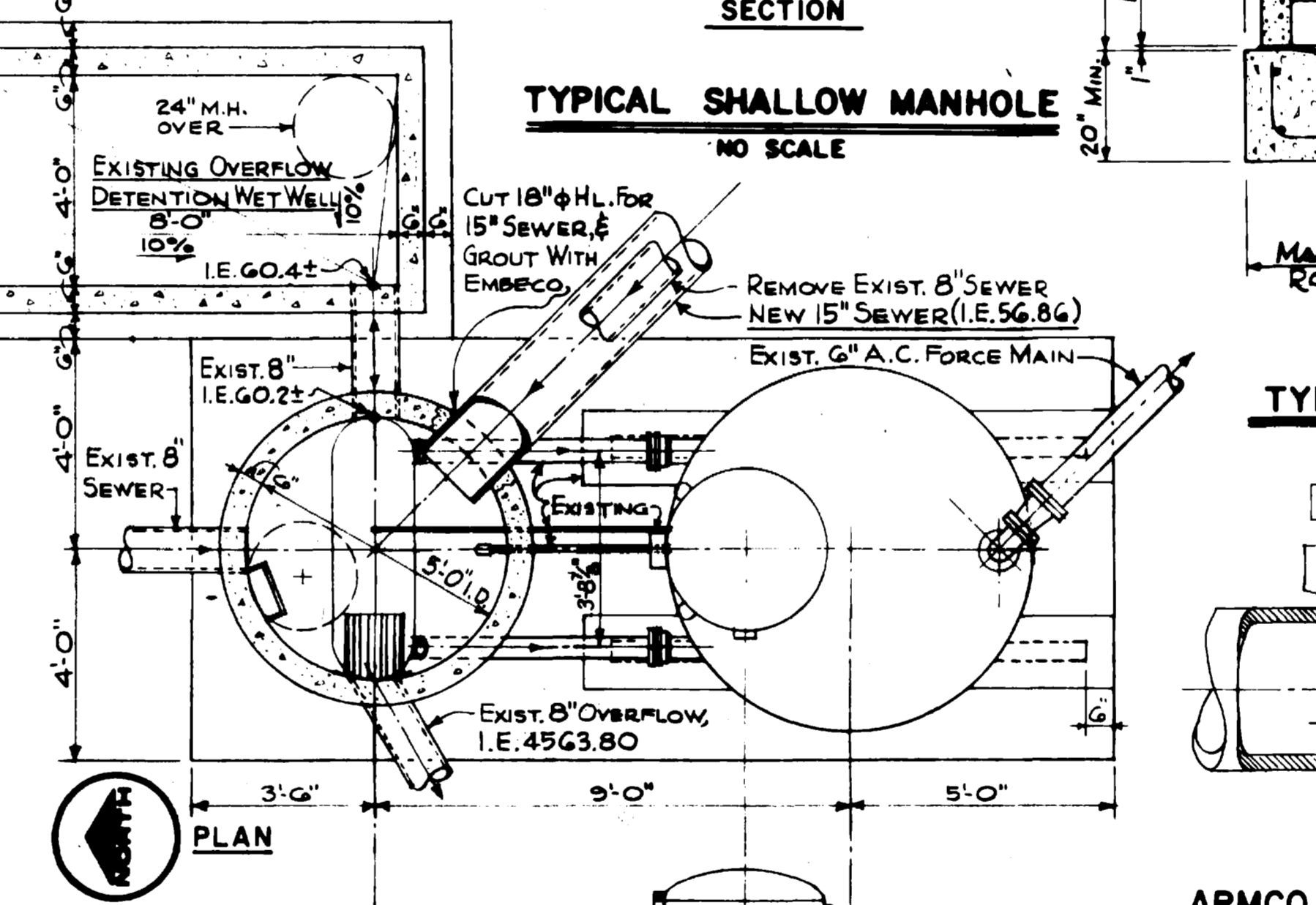
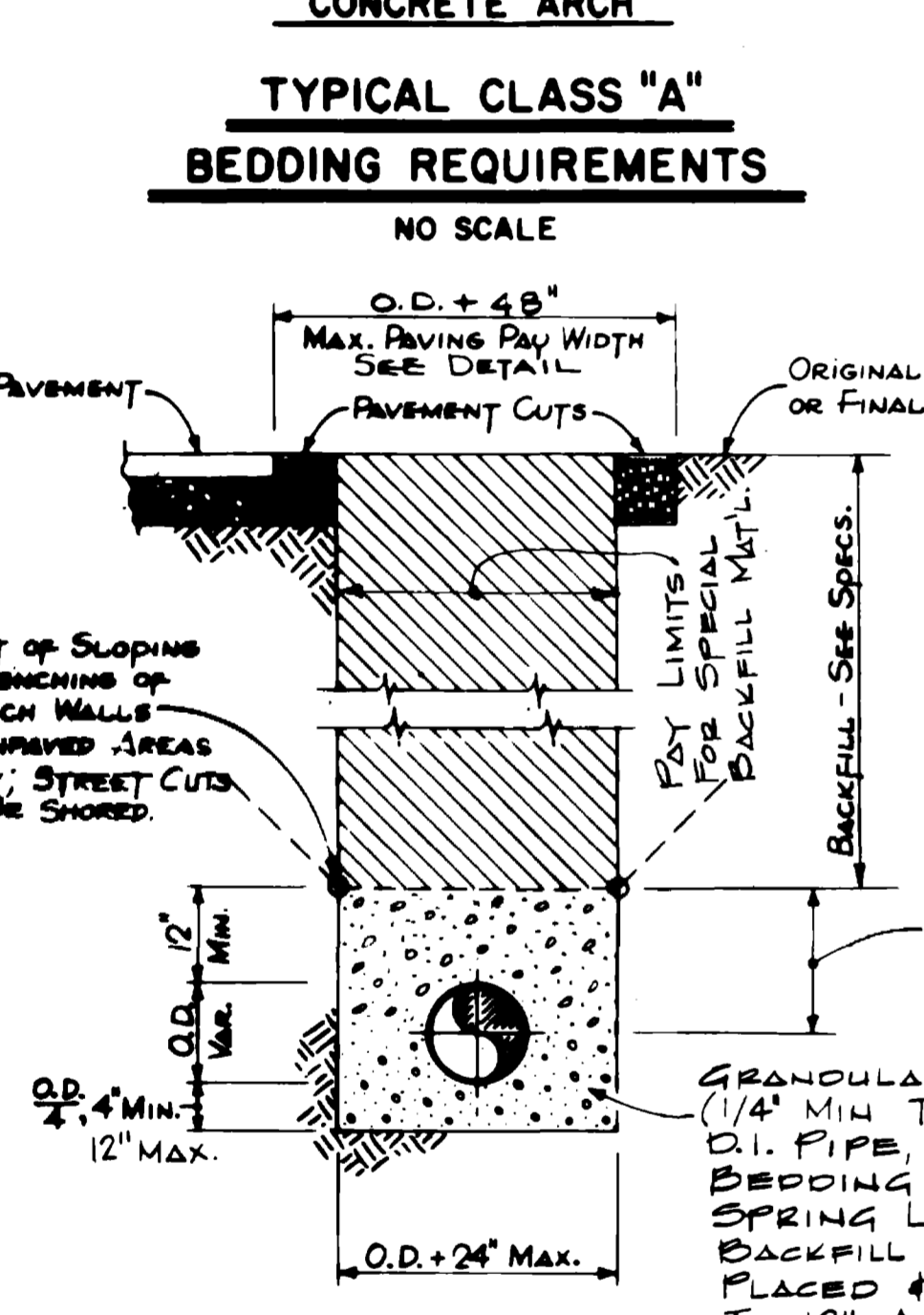
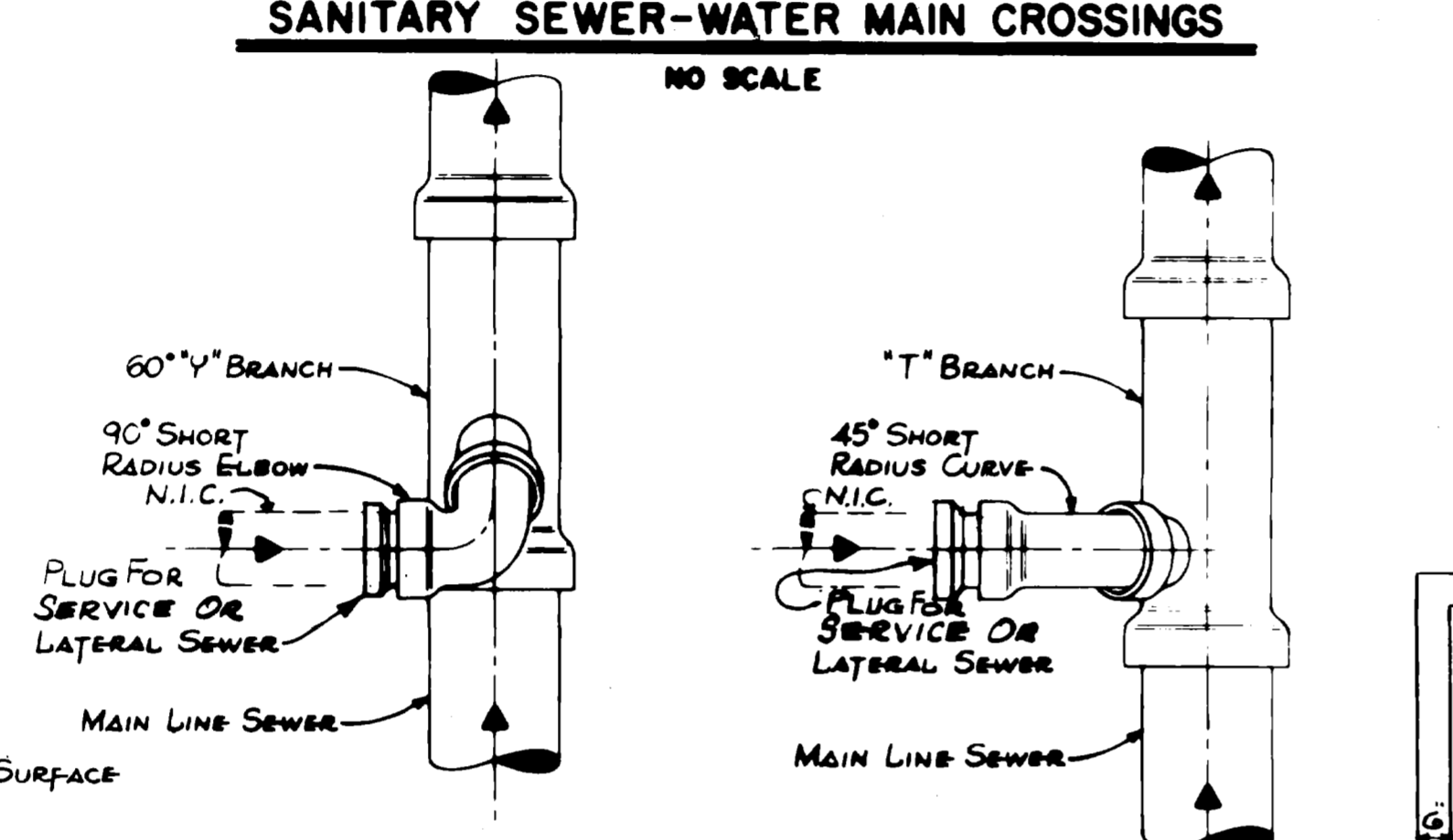
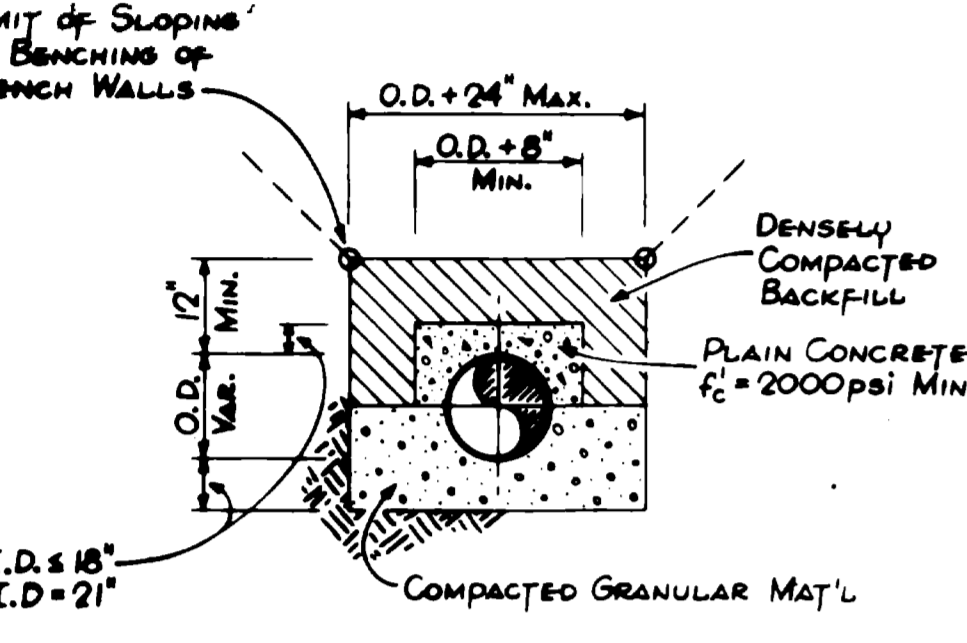
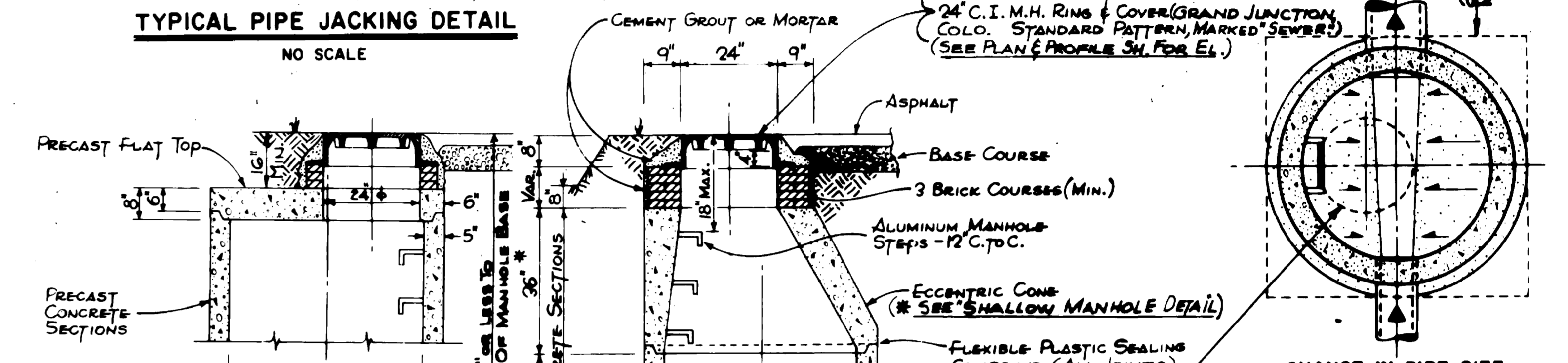
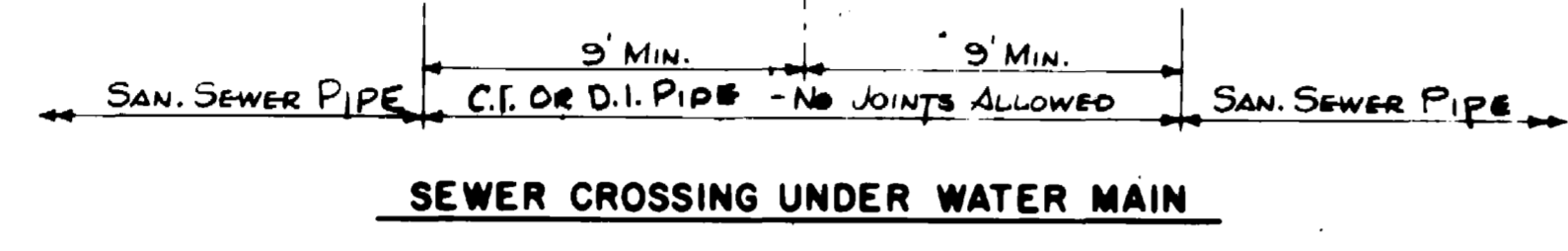
11 of 12

PARADISE HILLS
SUBDIVISION INC.





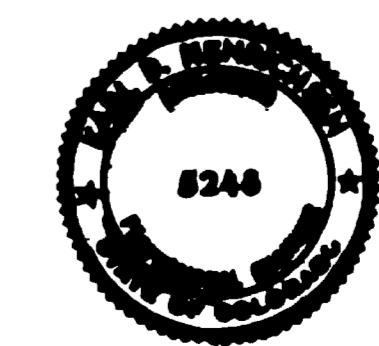
OPTIONAL CONCRETE ENCASUREMENT AT WATER MAIN CROSSINGS
NO SCALE



NOTE:
 SEWER PIPE SHALL BE PROVIDED WITH A FLEXIBLE JOINT AT EACH END OF CONCRETE ENCASUREMENT (TYP. ALL ENCASUREMENTS)

NOTE:
 CLASS IV RCP, WALL "B", SHALL HAVE CLASS B BEDDING TO DEPTHS OF 16 FEET AND LESS. BEYOND 16 FEET EITHER CLASS A BEDDING SHALL BE USED OR CLASS V RCP, WALL "B", SHALL BE USED. FOR V.C.P., IF DEPTH EXCEEDS 18" USE CL. "A" BEDDING

CITY OF GRAND JUNCTION, COLORADO
PARADISE HILLS INTERCEPTOR SEWER
 MISCELLANEOUS DETAILS
 HENNINGSON, DURHAM & RICHARDSON, INC.
 ENGINEERS - PLANNERS - CONSULTANTS
 GRAND JUNCTION & DENVER, COLORADO
 JOB 73-39-10 DESIGNED BY R.V. STOKES DRAWN BY A. TACITO APPROVED BY HENNINGSON DATE NOVEMBER 1978 SHEET 12 OF 12



NO.	DATE	DESCRIPTION	REVISIONS	MADE	APPROV.