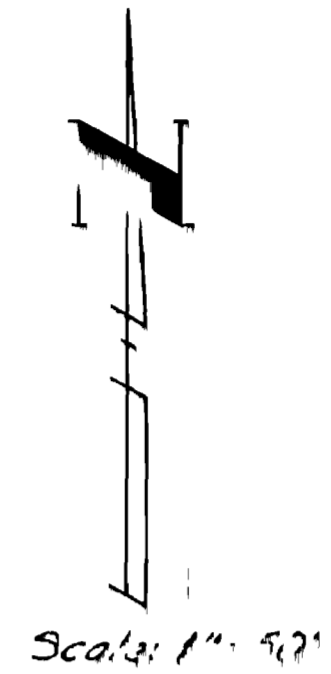
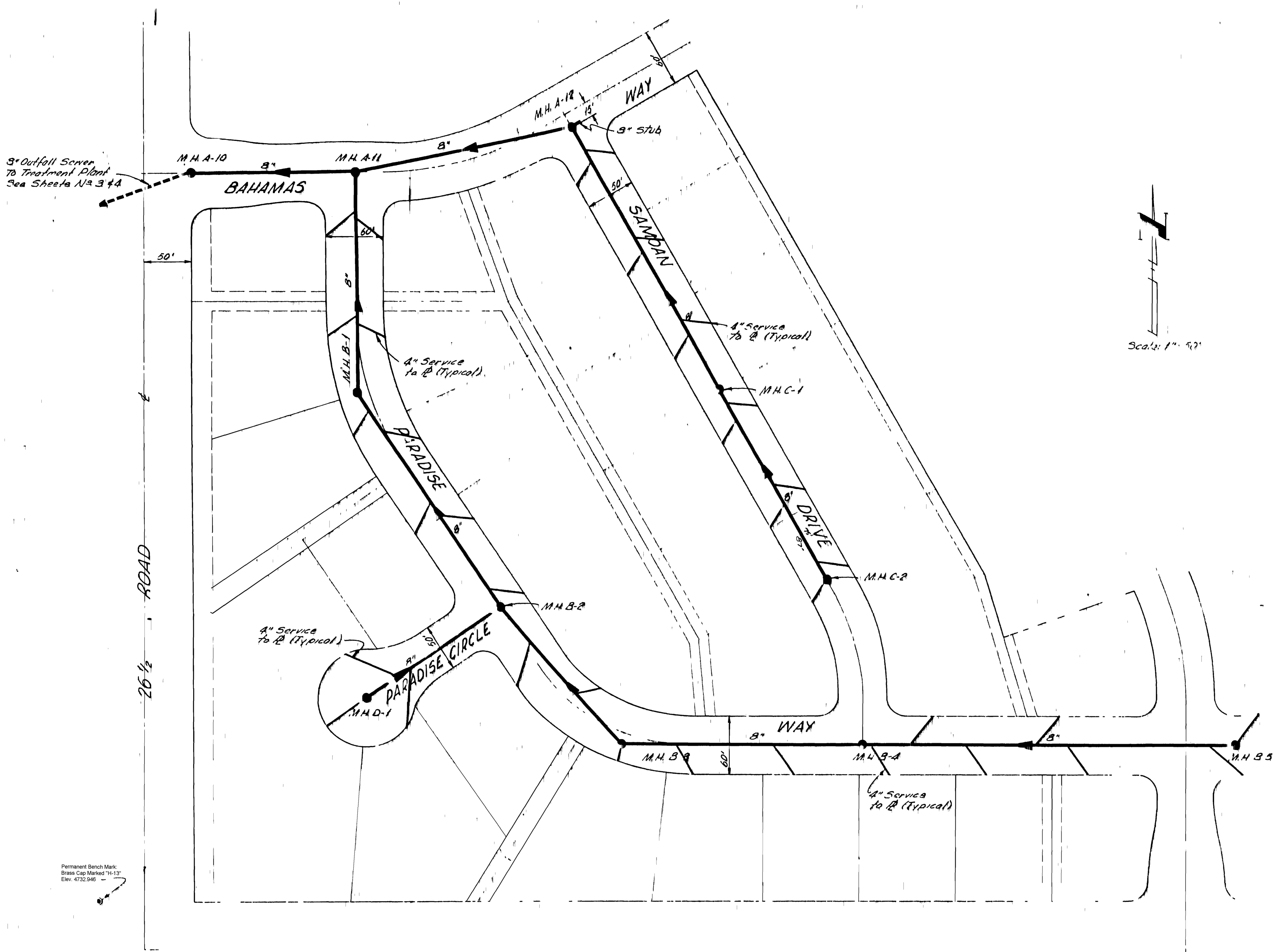


3" Outfall Sewer
To Treatment Plant
See Sheets N/A 3 & 4



Permanent Bench Mark
Brass Cap Marked "14-13"
Elev. 4732.946

45 - BUILT DRAWINGS

9 3 11 43-9047

DATE MARCH, 1967
SCALE 1" = 50'

DRAWN CG
CHECKED DL
APPROVED W.D.E.

PROJECT NO.
6618

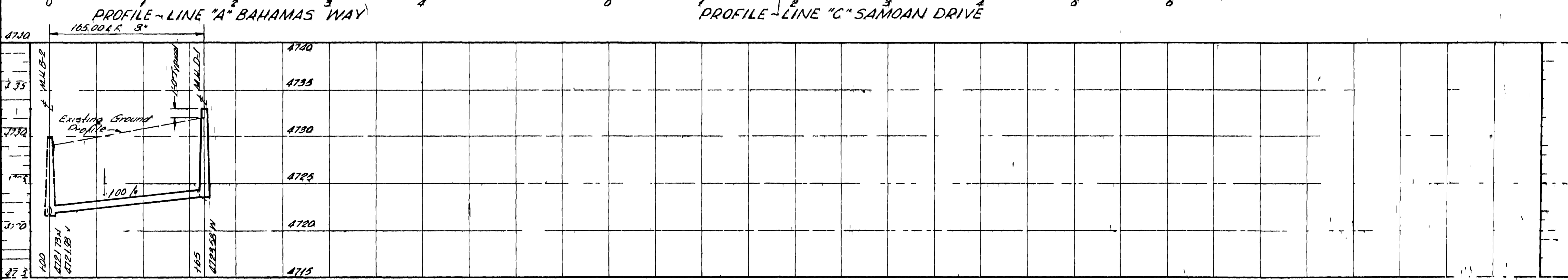
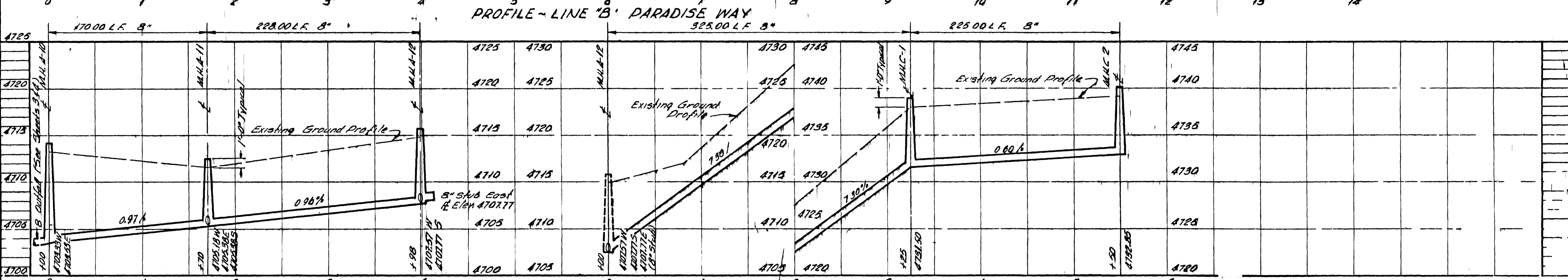
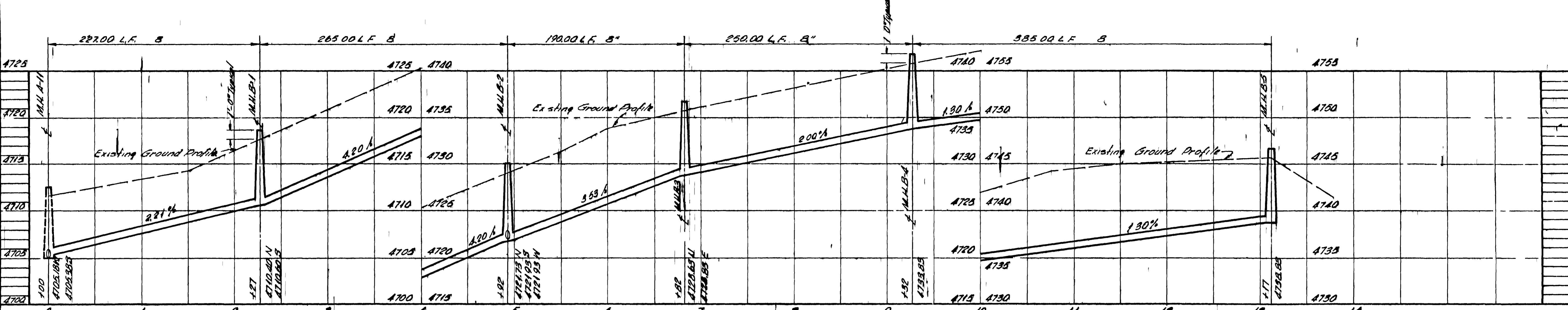
NELSON HALLY PATTERSON AND QUIRK
ENGINEERING CONSULTANTS
GREELEY, COLORADO

PARADISE HILLS SUBDIVISION
GRAND JUNCTION, COLORADO

SANITARY SEWER
COLLECTION SYSTEM PLAN

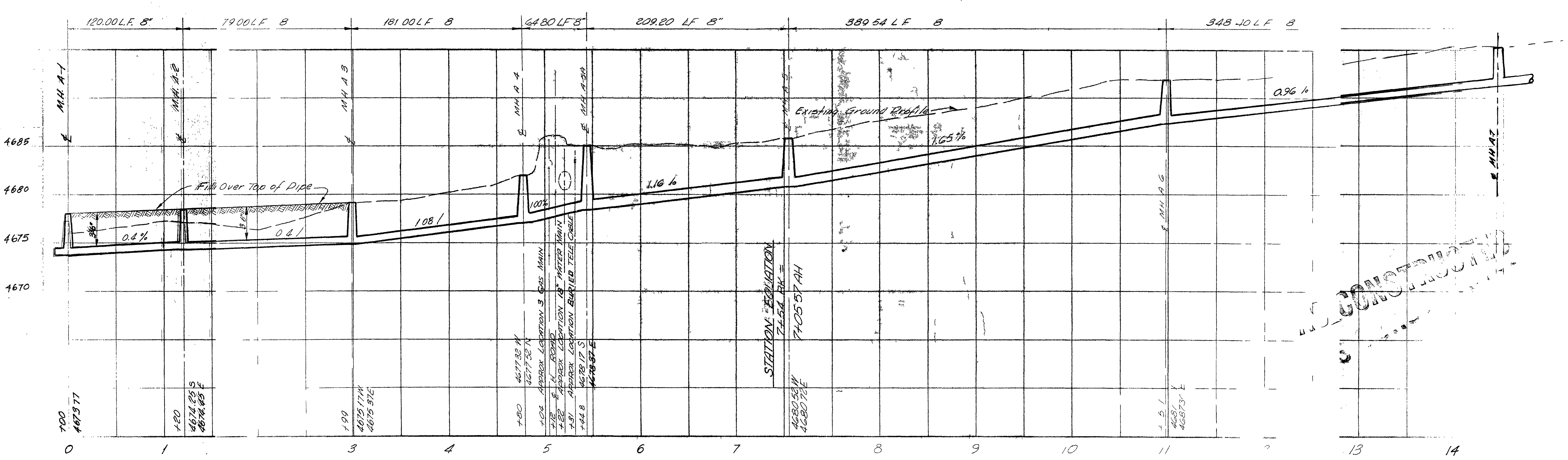
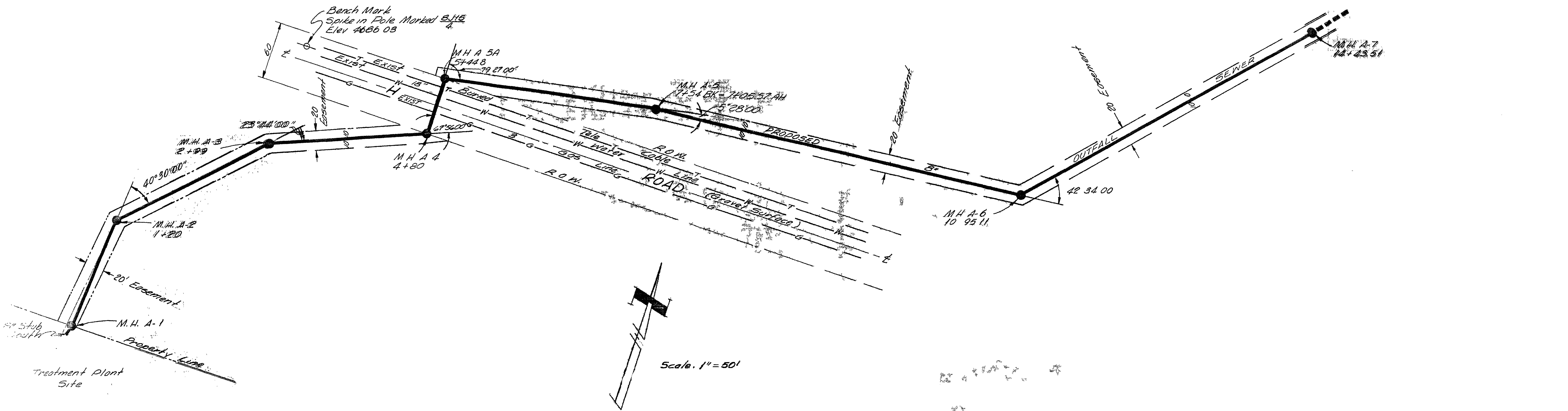
AS BUILT DRAWINGS
SANITARY SEWER
COLLECTION SYSTEM PLAN
SCALE 1"=50'

02010801.TIF



AS-BUILT DRAWING

| | | | | | | | | | |
|-------|--------------------------------|---------|------|-------------|--------|---|--|---|-------------|
| DATE | MARCH 1967 | DRAWN | CG | PROJECT NO. | 0019 | NELSON HALEY PATTERSON AND QUIRK ENGINEERING CONSULTANTS COLORADO | PARADISE HILLS SUBDIVISION GRAND JUNCTION, COLORADO | SANITARY SEWER COLLECTION SEWER PROFILES | 4 SHEETS |
| SCALE | 1" = 50' HORIZ 1" = 3' VERT | CHECKED | D.L. | APPROVED | W.D.A. | | | | |



| NO. | DATE | BY | REVISIONS |
|-----|------------|----|-----------|
| 1 | MARCH 1967 | CG | AS-BUILT |
| 2 | 10-21-67 | DL | |
| 3 | 1-2-68 | WV | |

MARCH 1967
1 50 10-21-67
1 2 1-2-68

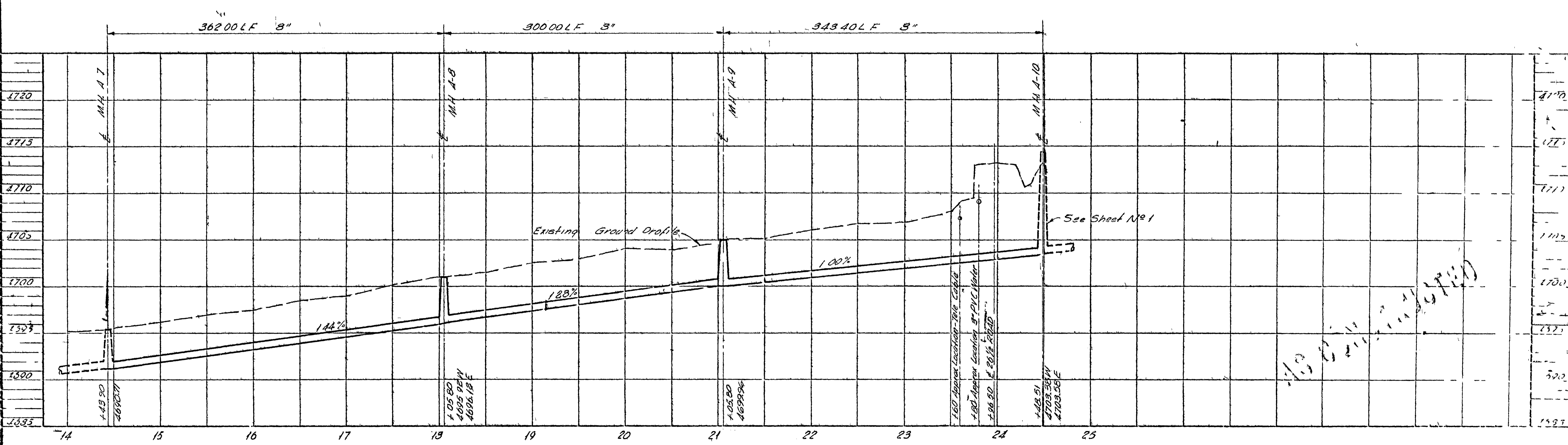
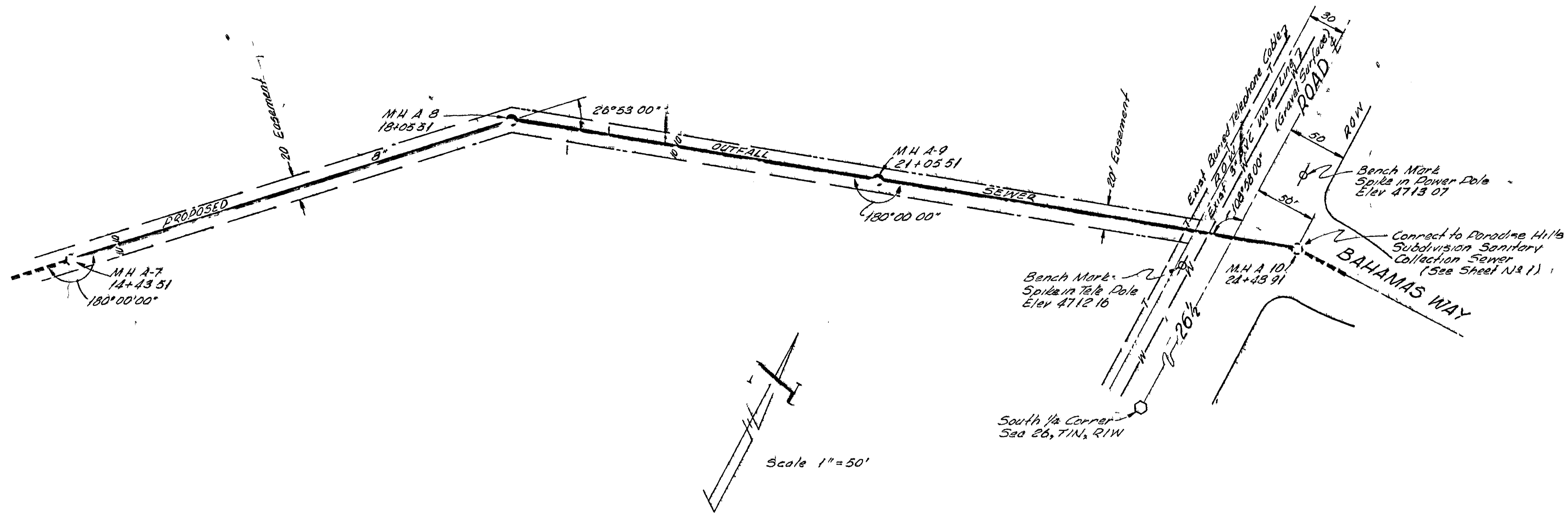
W CG
DL
WV

EC
6618

NELSON HALEY PATTERSON & QUIRK
ENGINEERING CONSULTANTS
COLORADO

PARADISE HILL SUBDIVISION
GRAND COUNTY

OUTFALL SEWER
PLAN AND PROFILE



Handwritten note: 1/3 2/11/67

AS BUILT DRAWING

| NO. | DATE | BY | DESCR. |
|-----|------------|----|----------|
| 1 | MARCH 1967 | CG | AS BUILT |
| | | | |
| | | | |

| | | | |
|-------|---------------|----------|-----|
| DATE | MARCH 1967 | DRAWN | CG |
| SCALE | 1"=50' HORIZ. | CHECKED | DL |
| | | APPROVED | WDE |

PROJECT NO
6618

NEULSON HALEY PATTERSON AND QUIRK
ENGINEERING CONSULTANTS
GREELEY COLORADO

PARADISE HILLS SUBDIVISION
GRAND JUNCTION, COLORADO

OUTFALL SEWER
PLAN AND PROFILE.

