

HORIZON DRIVE TRUNK SEWER LINE EXTENSION 1972

CITY OF GRAND JUNCTION
COLO.

ENGINEERING DEPARTMENT
City of GRAND JUNCTION
"HORIZON DRIVE
TRUNK SEWER
LINE EXTENSION"
1972

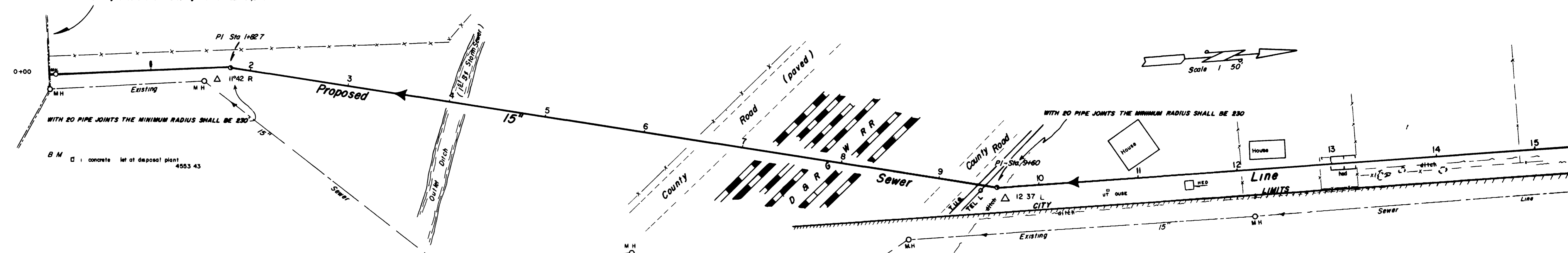
DRWN BY RC
DATE OCTOBER, 1972
SCALE AS SHOWN
FIELD BOOK 296

APPROVED BY
R. [Signature]
CITY ENGINEER

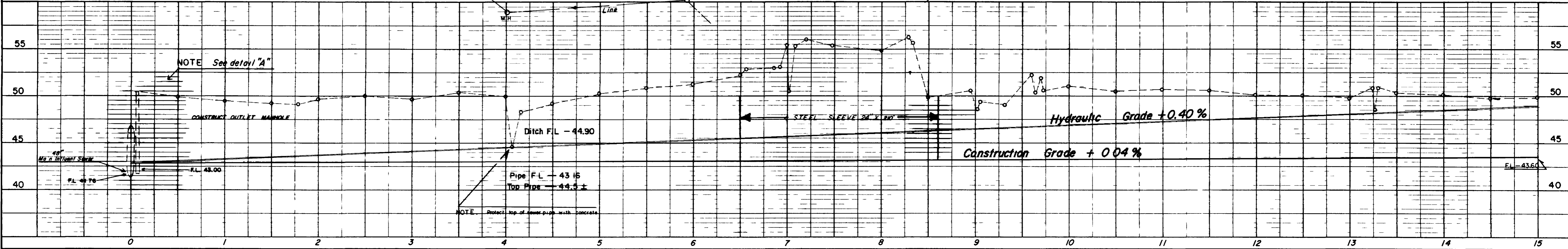
DATE	DESCRIPTION	No	APPROVED
11/2/73	TUG AT STATIONS 31+00 and 9+40	3	D.H.
8/24/73	Moved Line off pavement to shoulder on 26 1/2 RD.	2	D.H.
8/24/73	Moved M.H. from 0+00 to 0+07 per "DETAIL A"	1	D.H.

REVISIONS

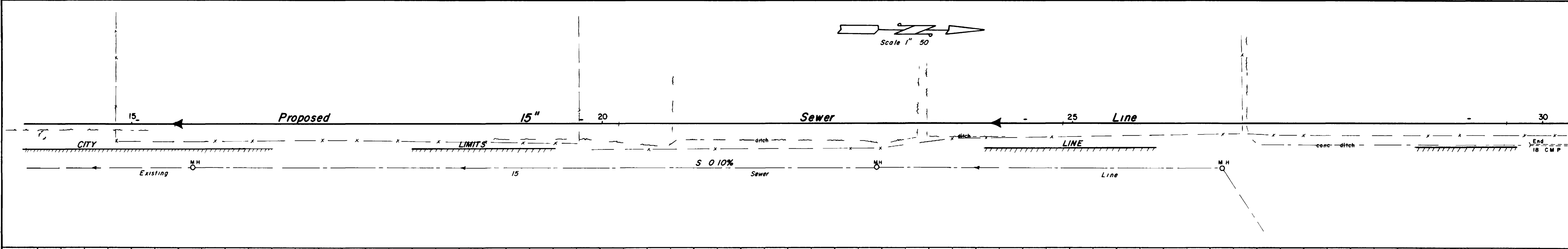
NOTE Existing Sewer Line to be replaced



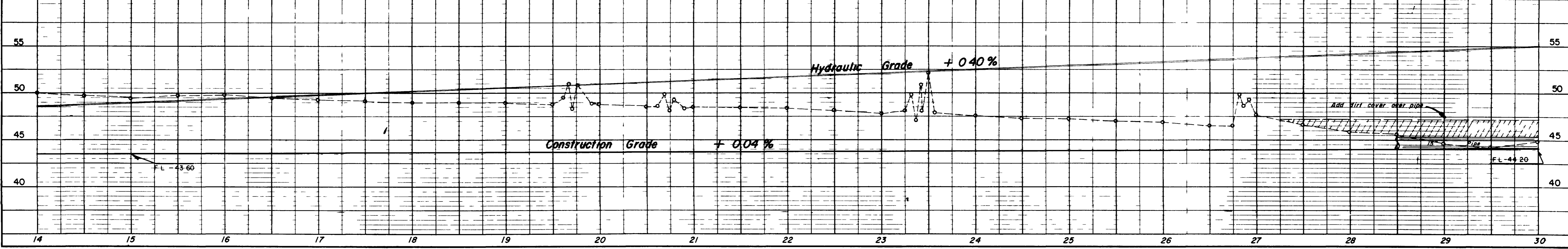
PLAN
NO. E 800
0-286



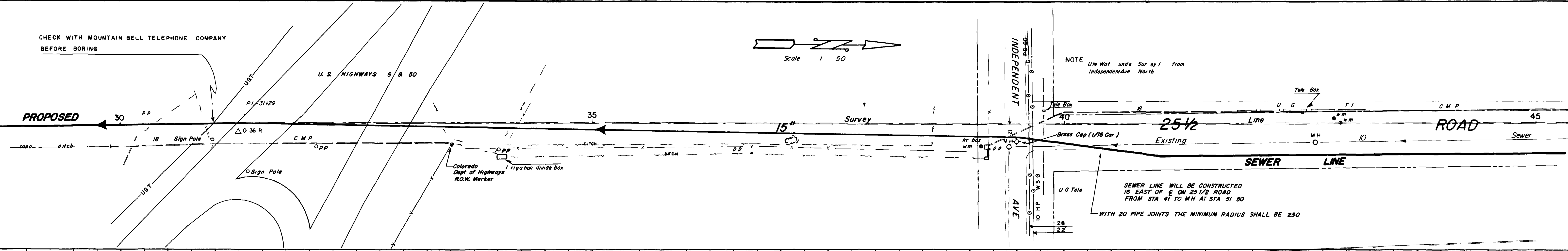
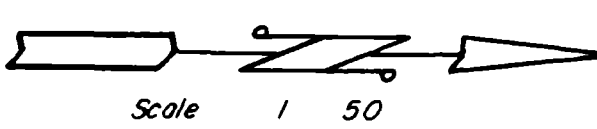
Scale 1" = 50'



PROFILE
NO. E 800

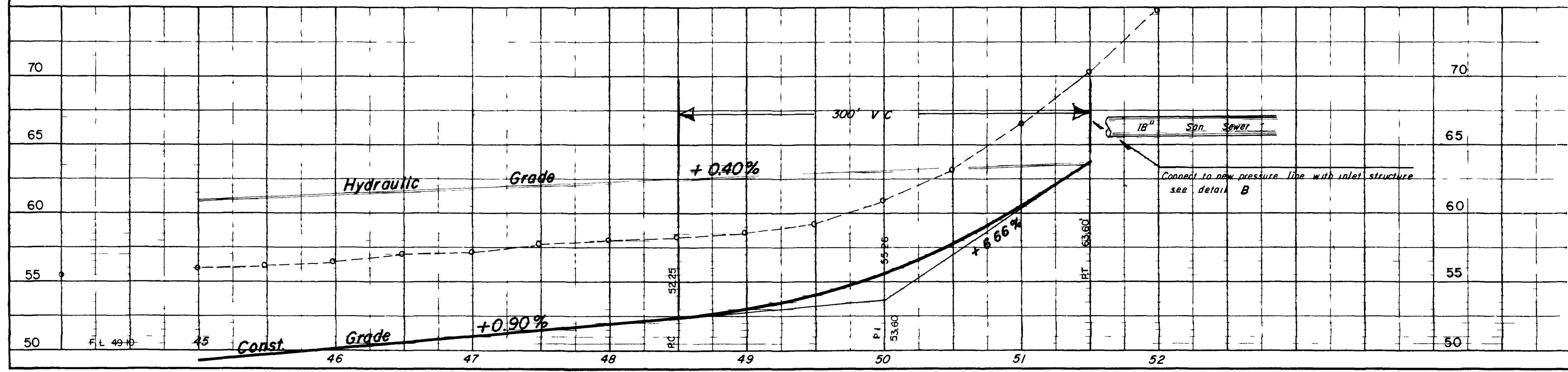
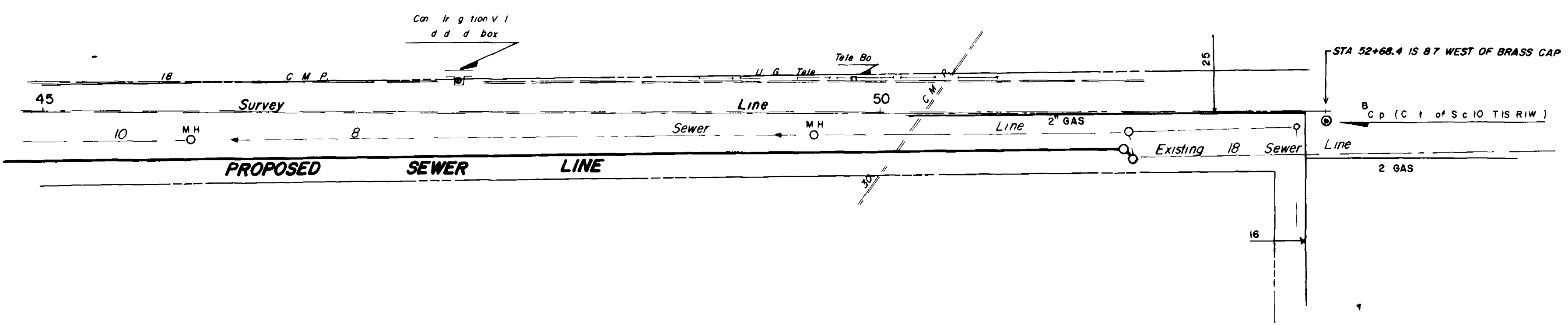
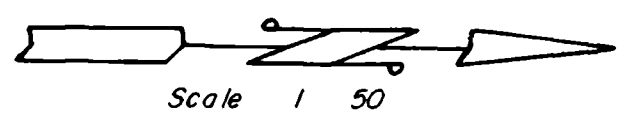
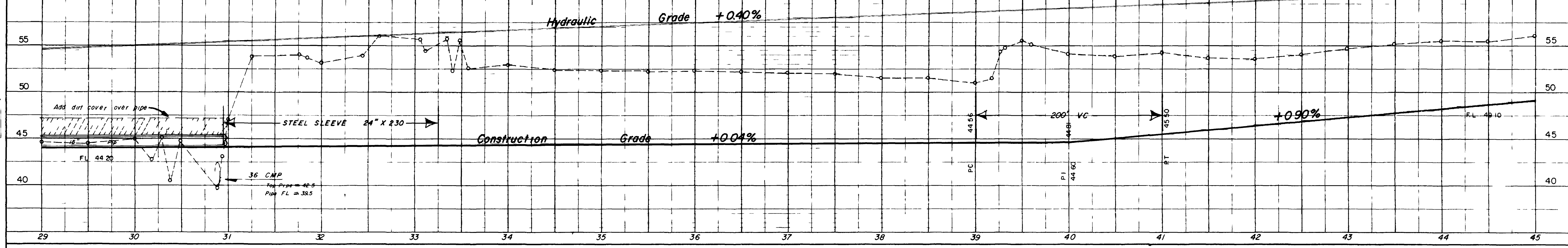


CHECK WITH MOUNTAIN BELL TELEPHONE COMPANY BEFORE BORING

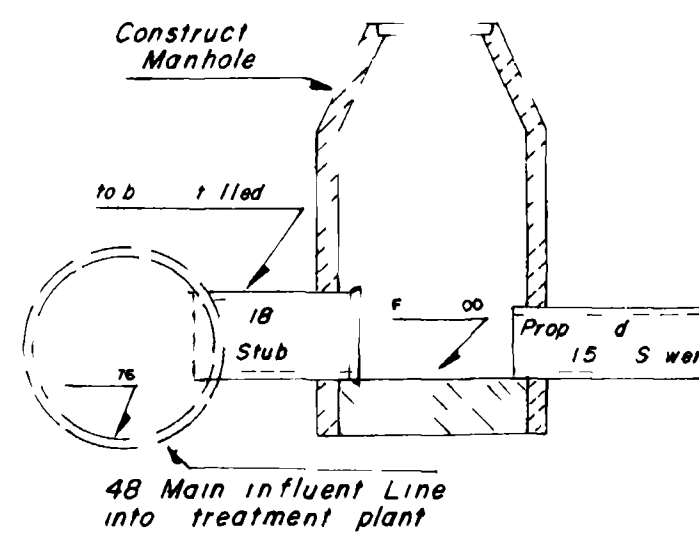


NOTE Use Water and Survey from Independent Ave North
SEWER LINE WILL BE CONSTRUCTED 16 EAST OF E ON 25 1/2 ROAD FROM STA 41 TO MH AT STA 51 50 WITH 20 PIPE JOINTS THE MINIMUM RADIUS SHALL BE 250

PLAN
0. BOO
0. 296



DETAIL "A"



DETAIL "B"

