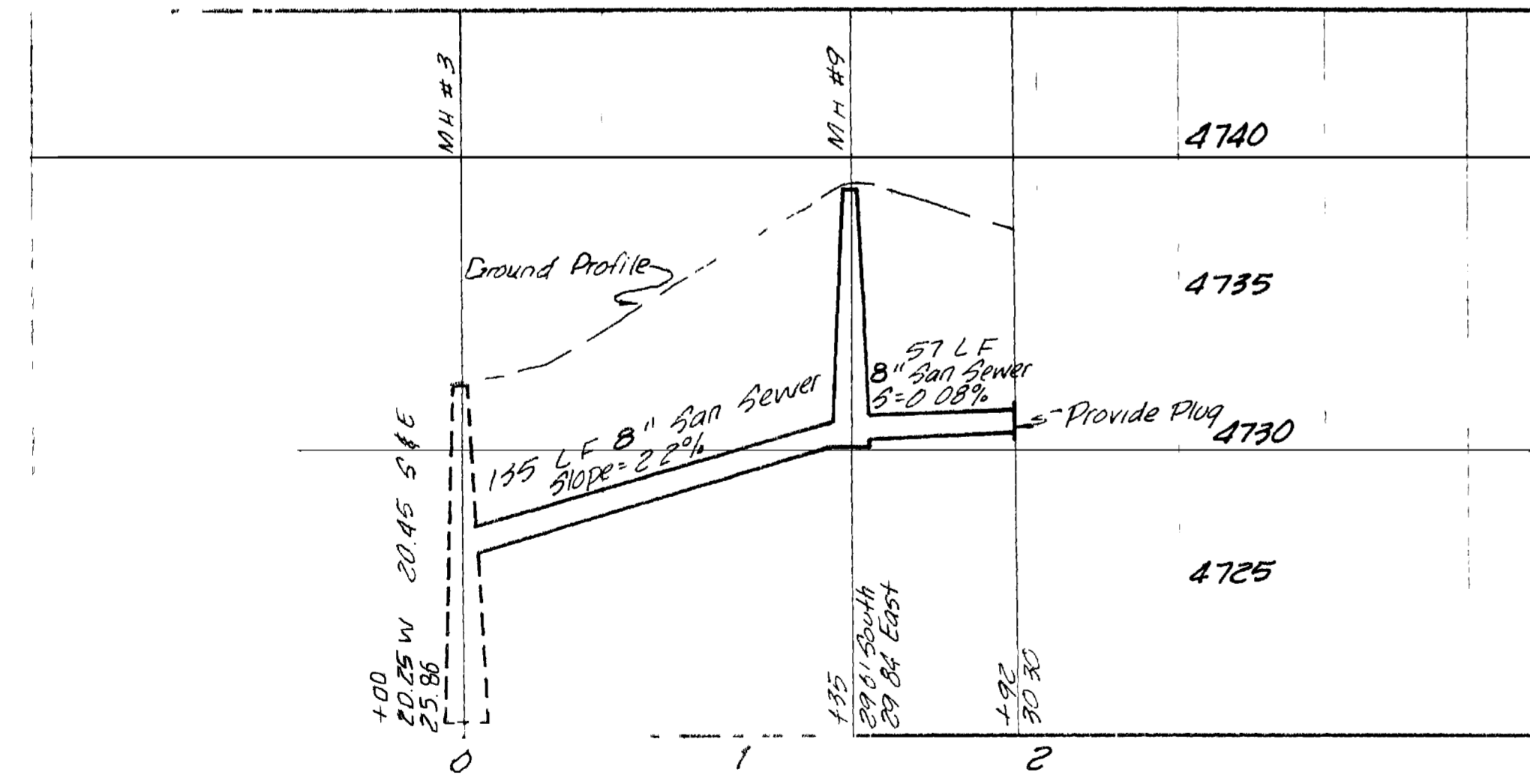
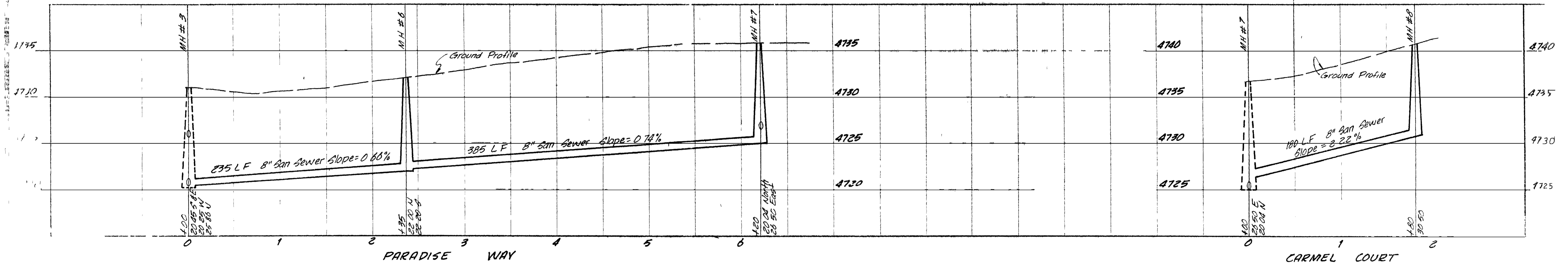
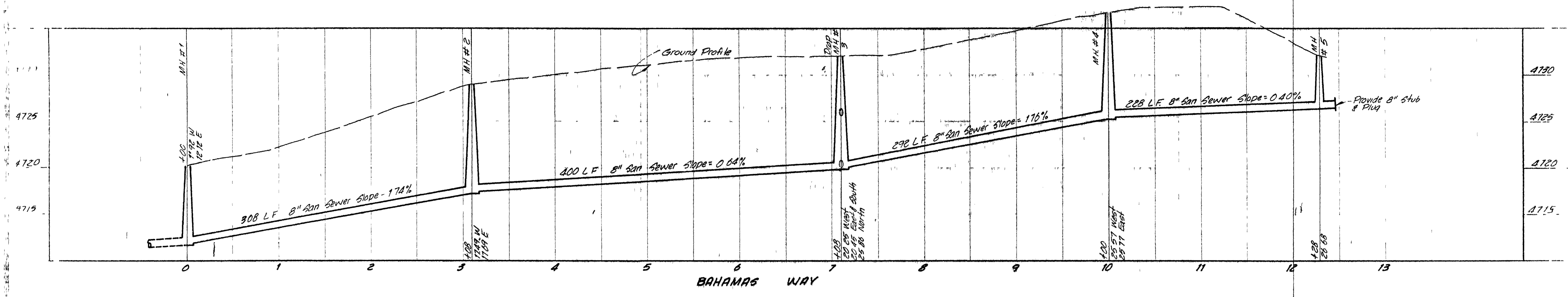


AS BUILT DRAWINGS

1	RTL June 74	A ₂ Built Drawings	Sept, 1973	JR F SA TAL	DE HE C JTP		NELSON HALEY PATTERSON AND QUIRK ENGINEERING CONSULTANTS GRAND JUNCTION COLORADO	PARADISE HILLS SUBDIVISION FILING No THREE	SANITARY SEWER PLAN	2
			SC F 1" 100'	OBJECT ENG RLA	CONST RE NHPR					
				OBJECT MGR JTP						

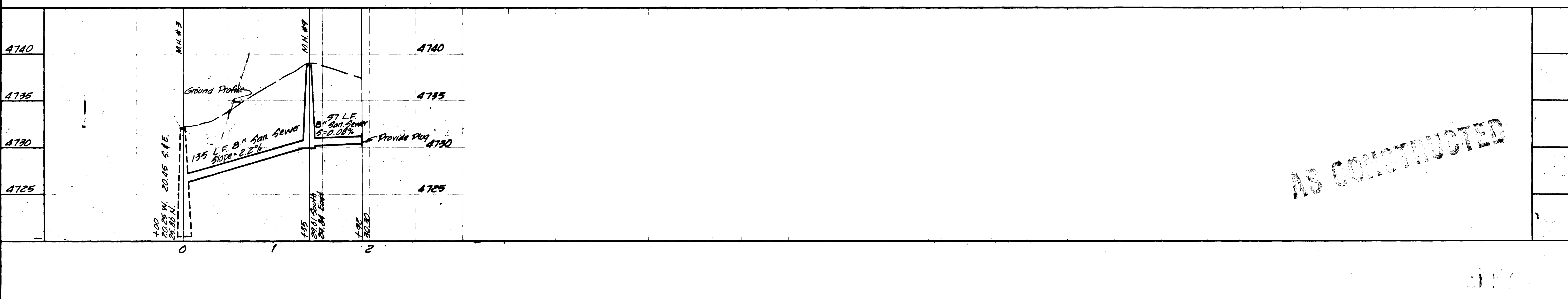
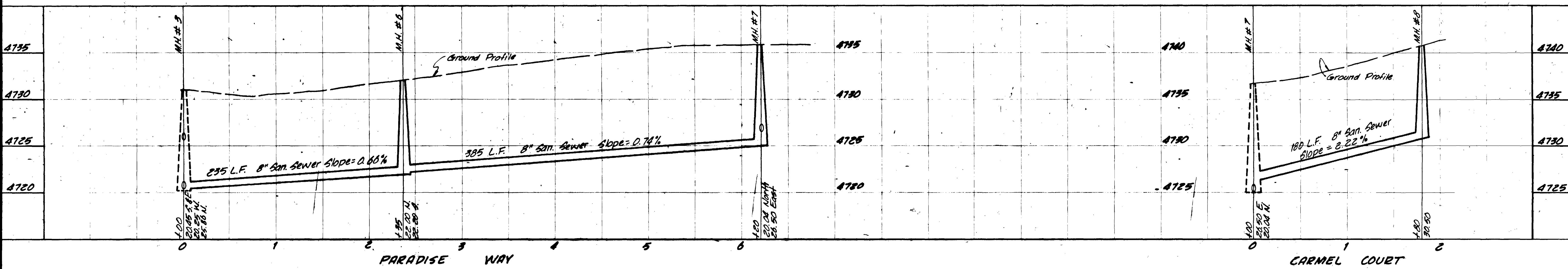
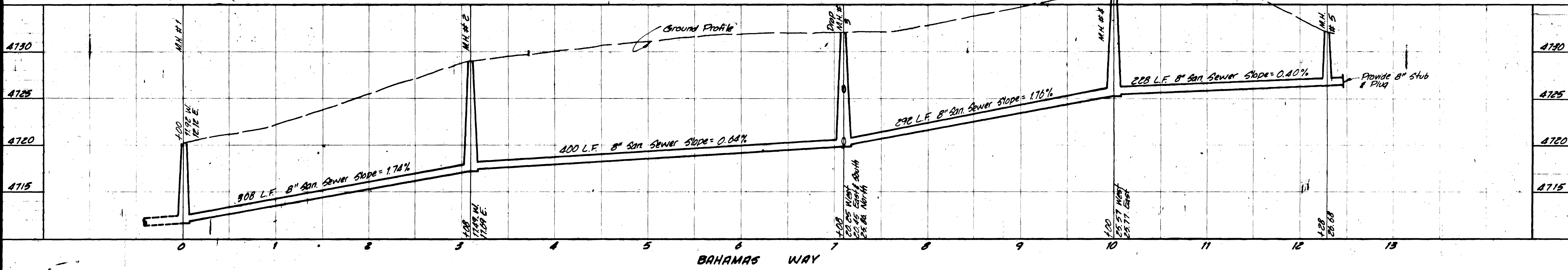


AS CONSTRUCTED

Sept. 1973	TAL ELA JTP	JTP NHP	NEIL J. HALLY PATTERSON AND QUIRK ENGINEERS OF DELAWARE	Paradise Hills Subdivision Filing No. 3	FWEL
------------	-------------------	------------	--	--	------

Sept. 1973
Scale:
1" = 5' Vert.
1" = 50' Horz.

Paradise Hills Subdivision
Filing No. 3
Sanitary Sewer Profile



AS CONSTRUCTED