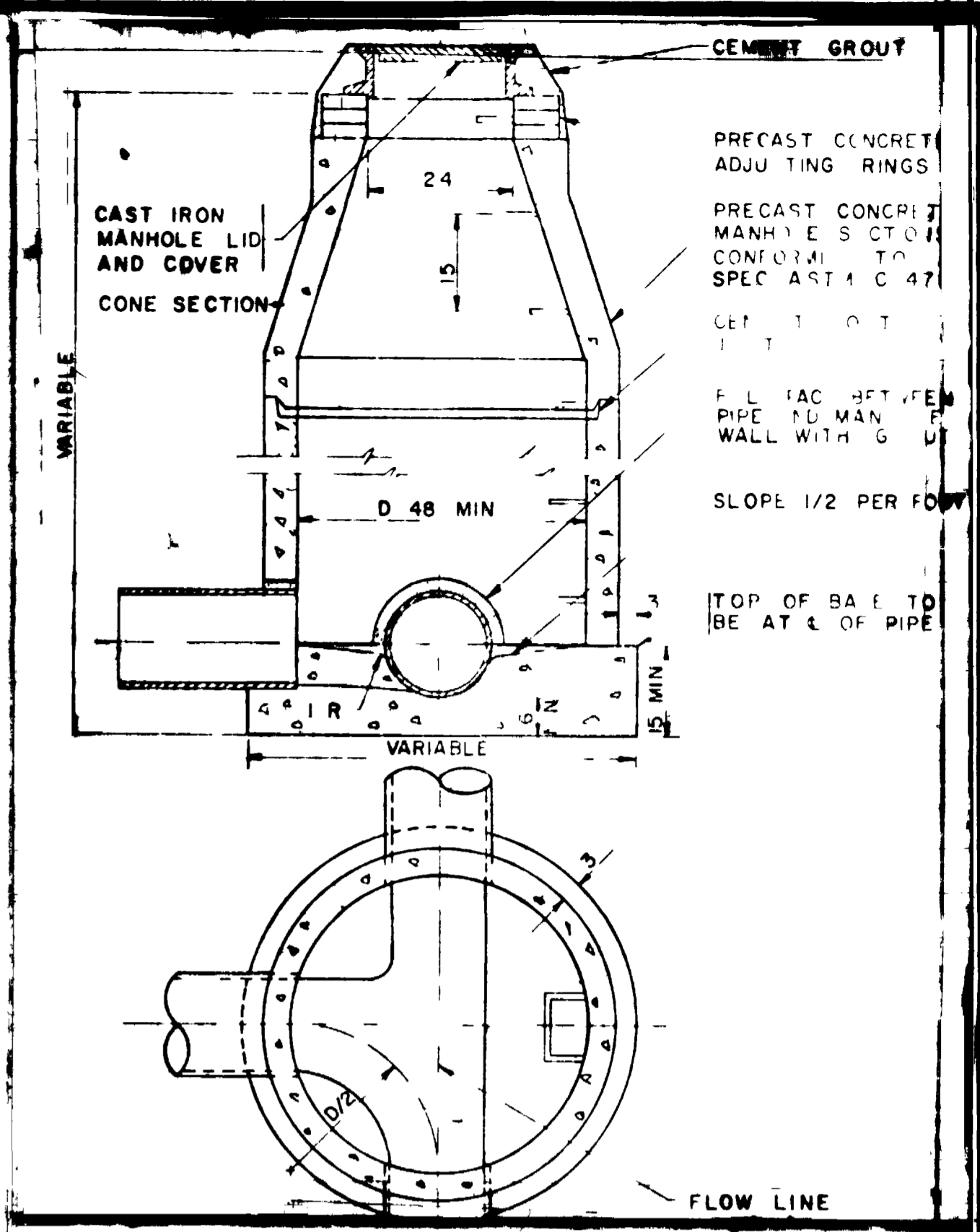
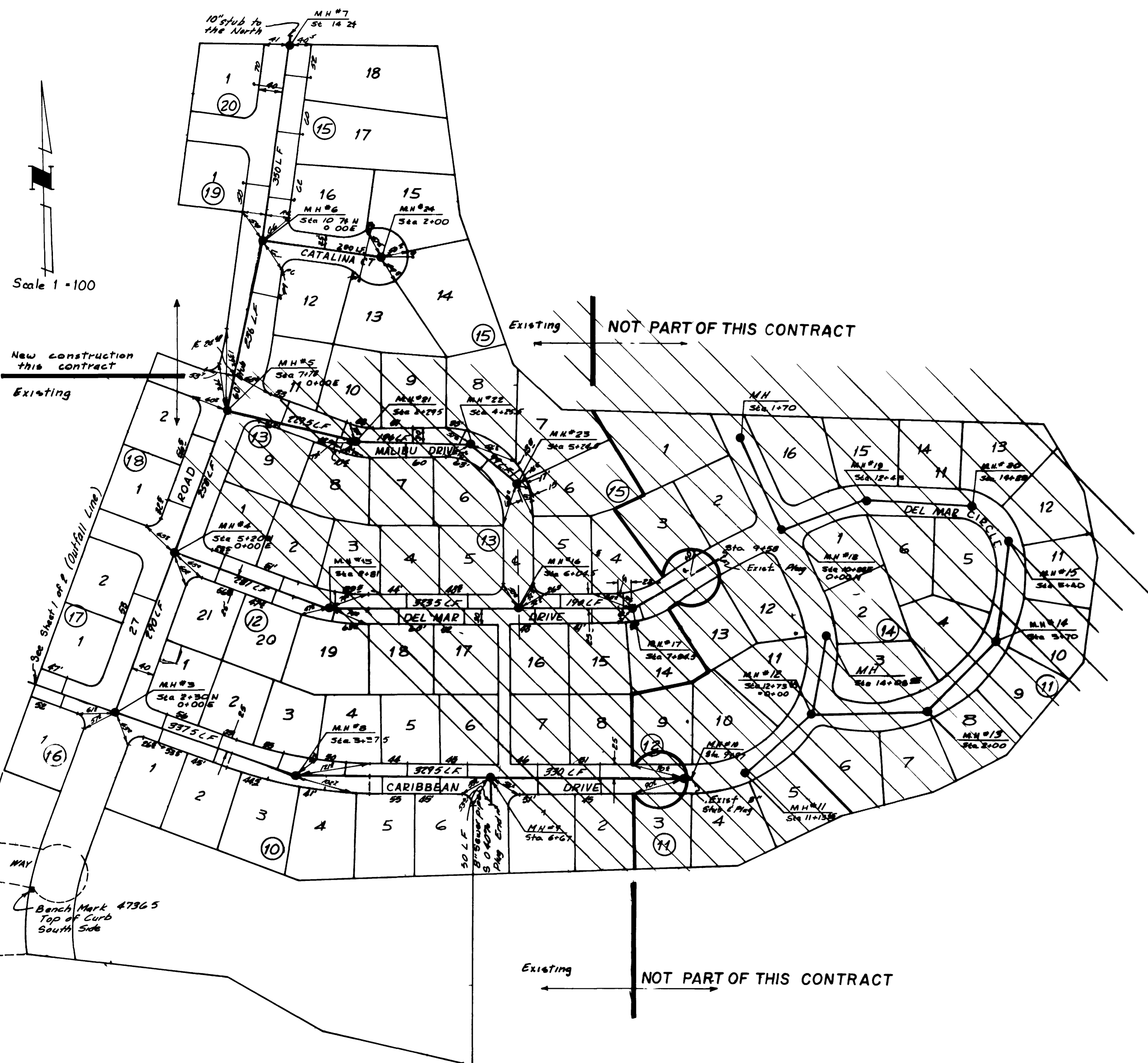
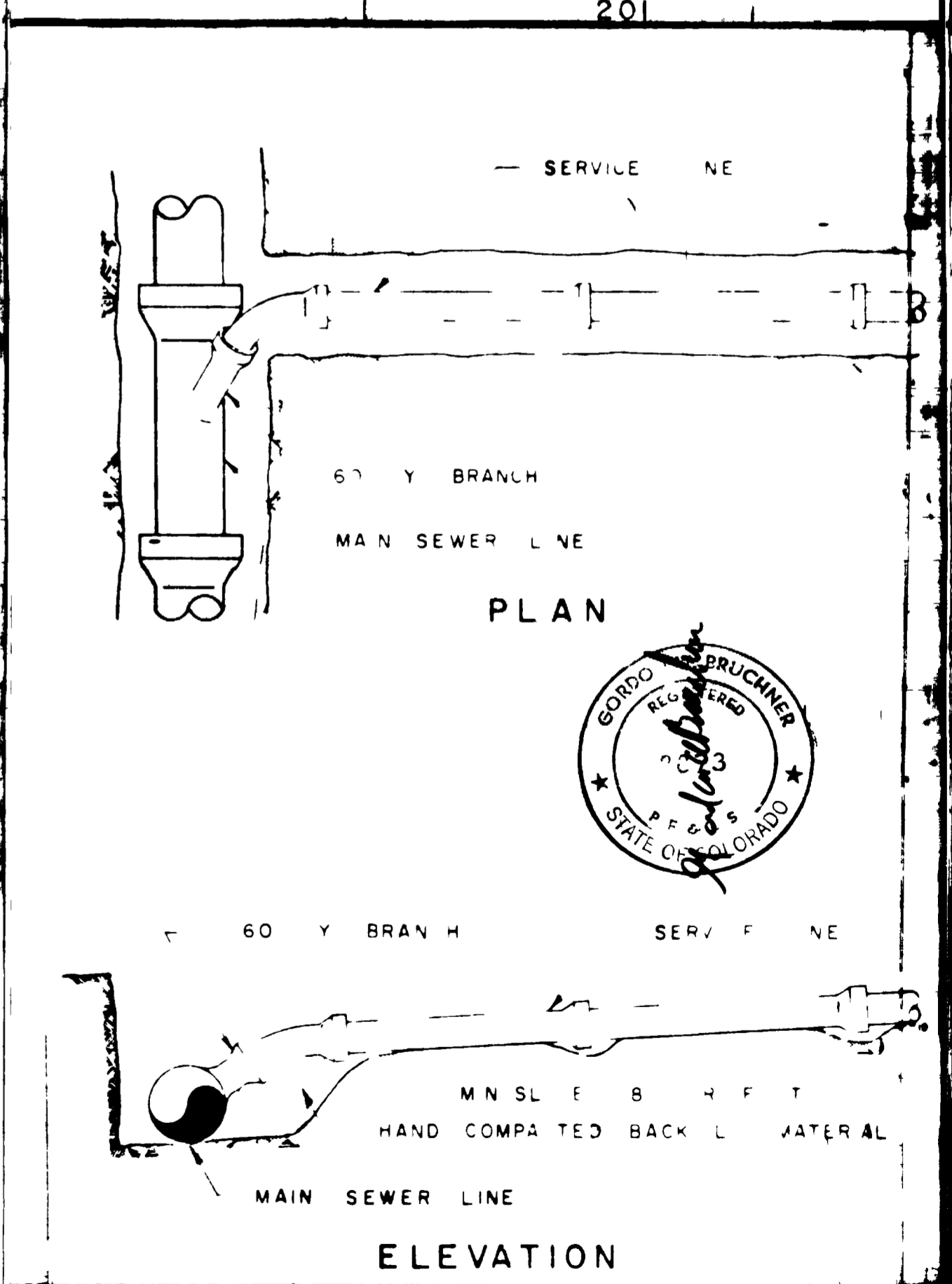


02-10-0



STANDARD MANHOLE



ELEVATION

CONSTRUCTION STANDARDS WYE CONNECTION STANDARD 225



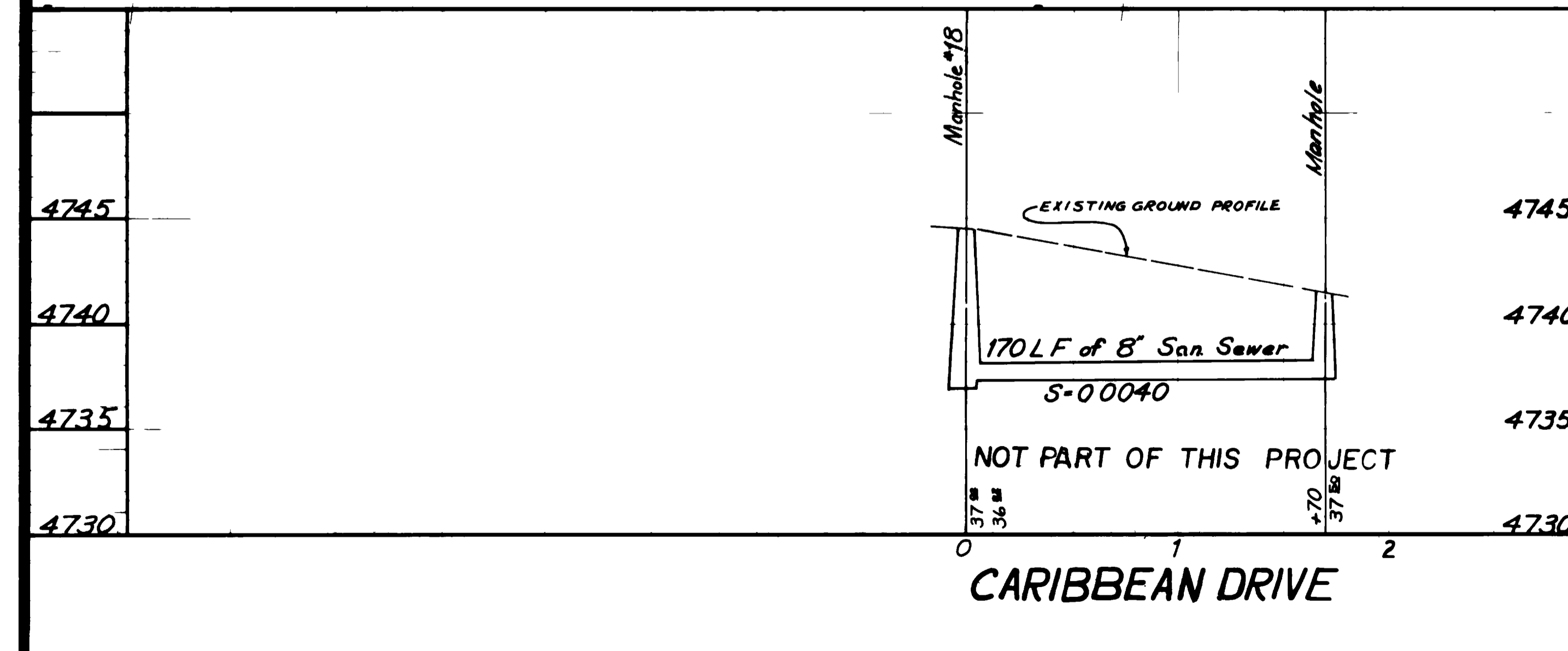
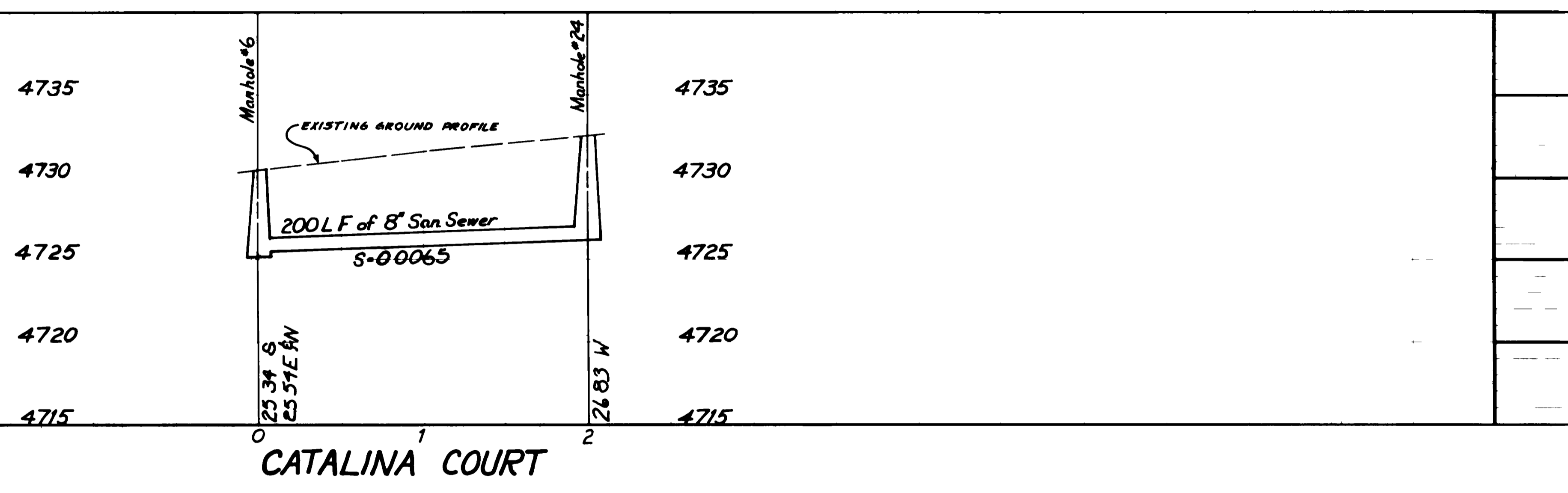
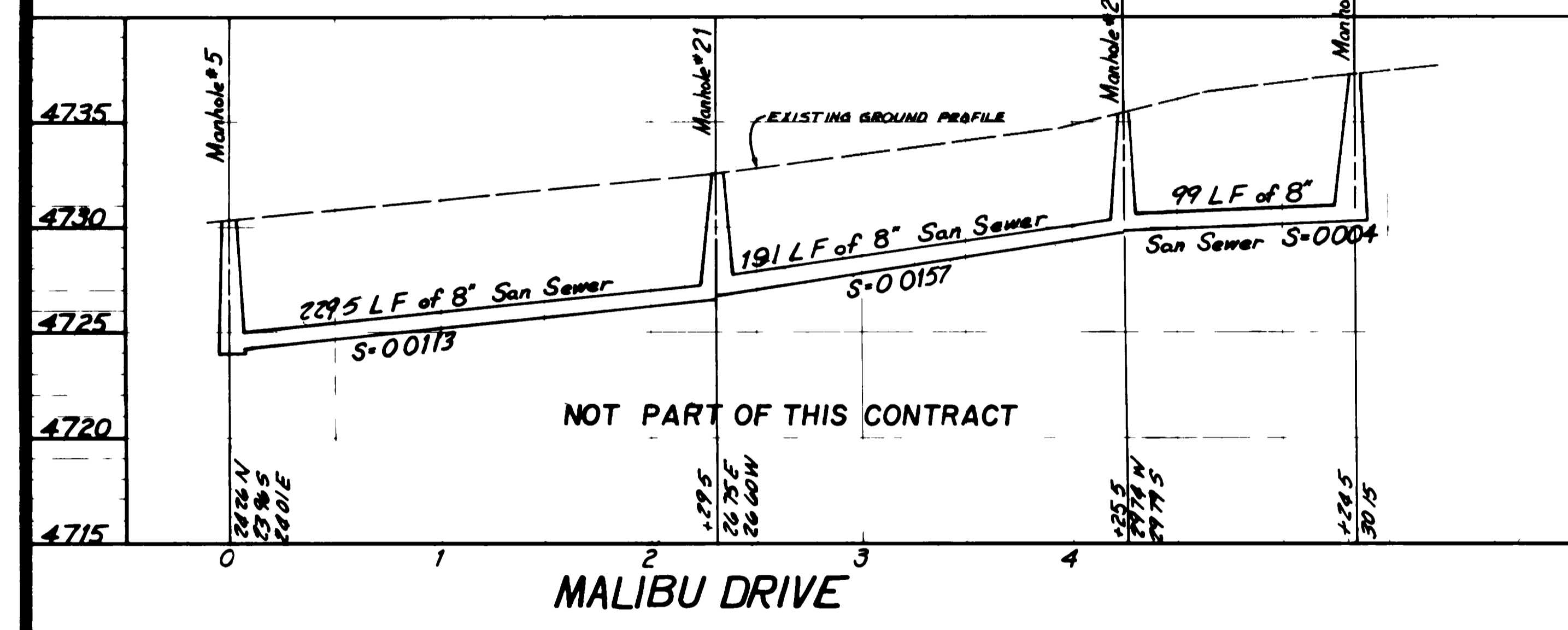
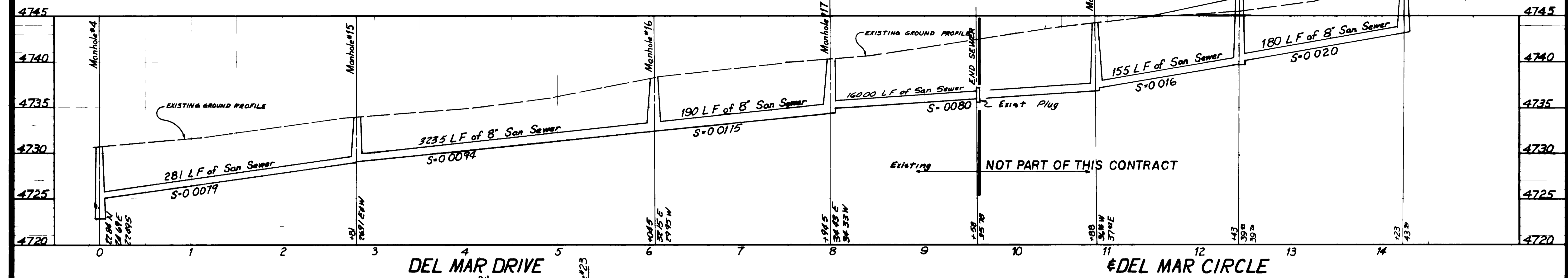
DATE	August 1975
SCALE	1" = 100'
DRAFTSMAN	JVC
DEPT. HEAD	
PROJECT ENGR.	EJ Goffe
PROJECT MGR.	

1 515 876 EJS "As Built" Sewer 1985

NELSON HALEY PATTERSON AND QUIRK ENGINEERING CONSULTANTS

SANITARY SEWER-PARADISE HILLS SUB FILING NO. FOUR

02-120-02



Handwritten signature
 J. SCHNEIDER
 20

AS BUILT

1	P/S	W/S	E/S	As Built
NO	BY	DATE	APPROVED	REVISIONS

DATE	1-21-75	DRAFTSMAN	JVC	DEPT. HEAD	
SCALE		PROJECT ENGR.		CONST. REP.	
		PROJECT MGR.			

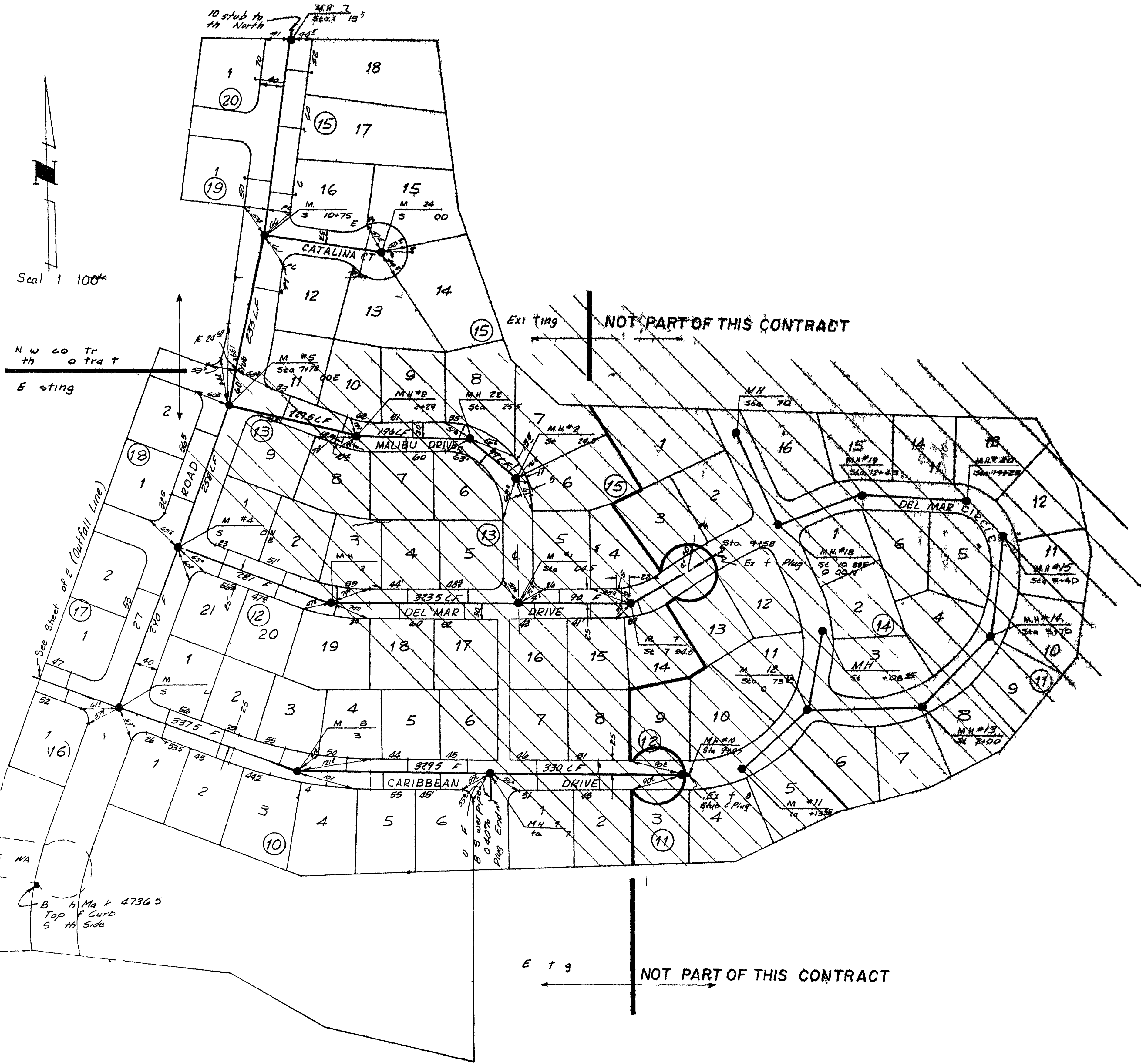


NELSON HALEY PATTERSON AND QUIRK
 ENGINEERING CONSULTANTS

PARADISE HILLS-SANITARY SEWER PROFILES

SHEET 6 OF 6

02.120.05.A



AS