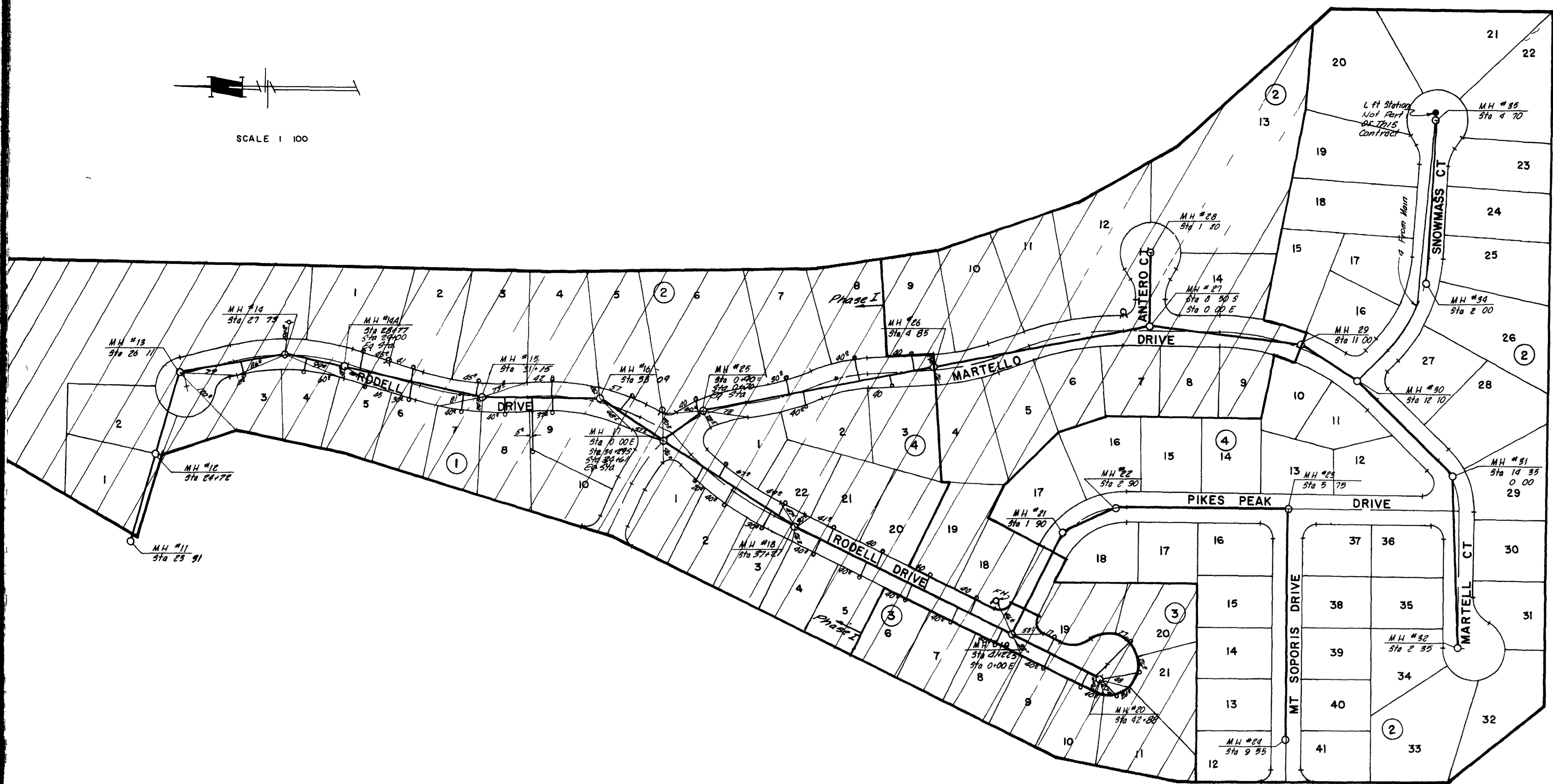


SCALE 1 100



**GENERAL NOTES**

- 1 ALL CONSTRUCTION TO BE DONE IN ACCORDANCE WITH THE CITY OF GRAND JUNCTION SPECIFICATIONS
- 2 TOP ECCENTRIC COVE TO BE SET @ TOP OF SUBGRADE (STREET CONTRACTOR TO SET RIMS TO FINISH GRADE OF STREETS)
- 3 ALL SEWER SERVICES TO EXTEND A MINIMUM 10' BEYOND PROPERTY LINE
- 4 SEWER AND WATER SERVICES SHALL HAVE A MINIMUM SEPARATION OF 10' AT ALL TIMES

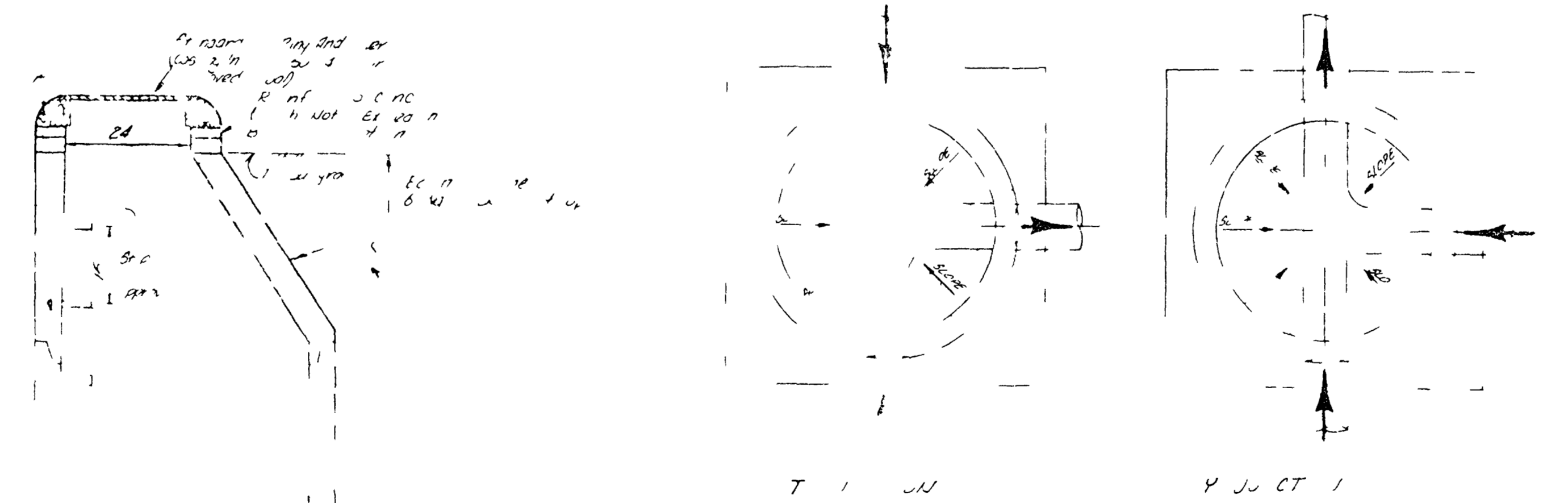
**QUANTITIES**

1605 LF 8" SANITARY SEWER  
 8 STANDARD MANHOLES  
 41 SERVICES CONNECTIONS

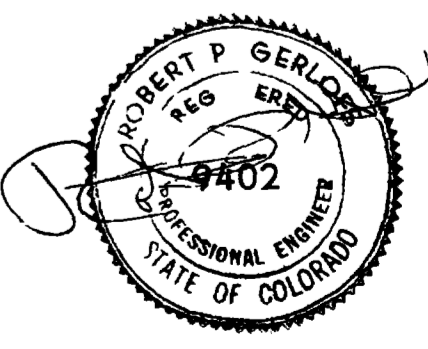
 PREVIOUS PHASES - UTILITIES EXISTING

**NOTE**

Th t t f t t t h t  
 ft lb d t t i 00  
 gall n p h d t p l  
 fl gth p dv



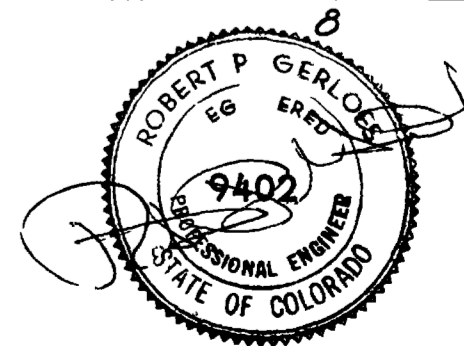
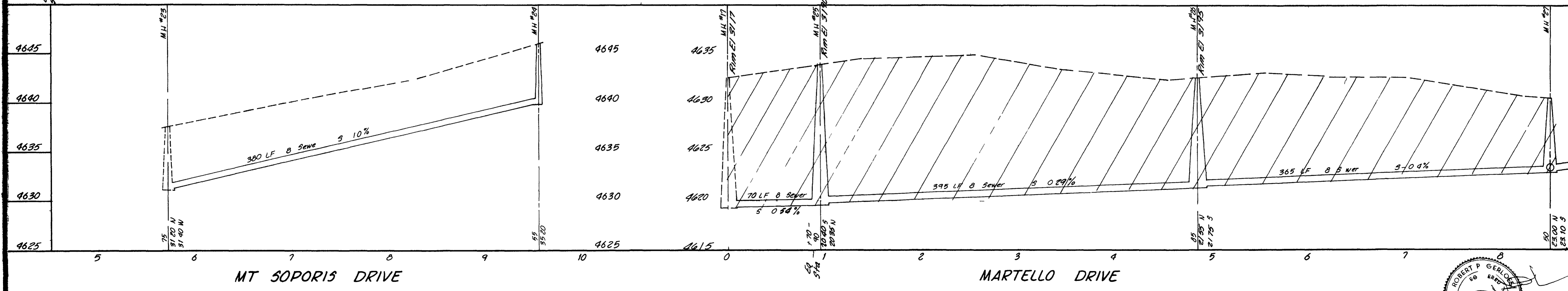
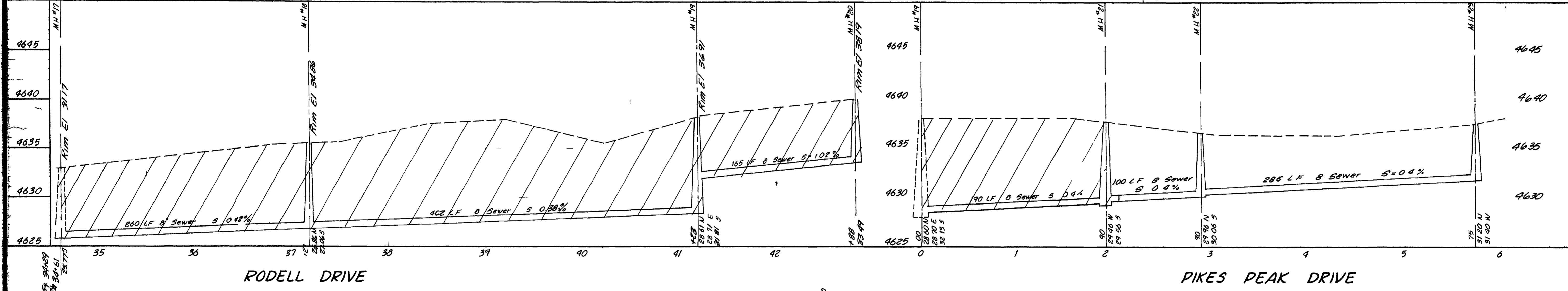
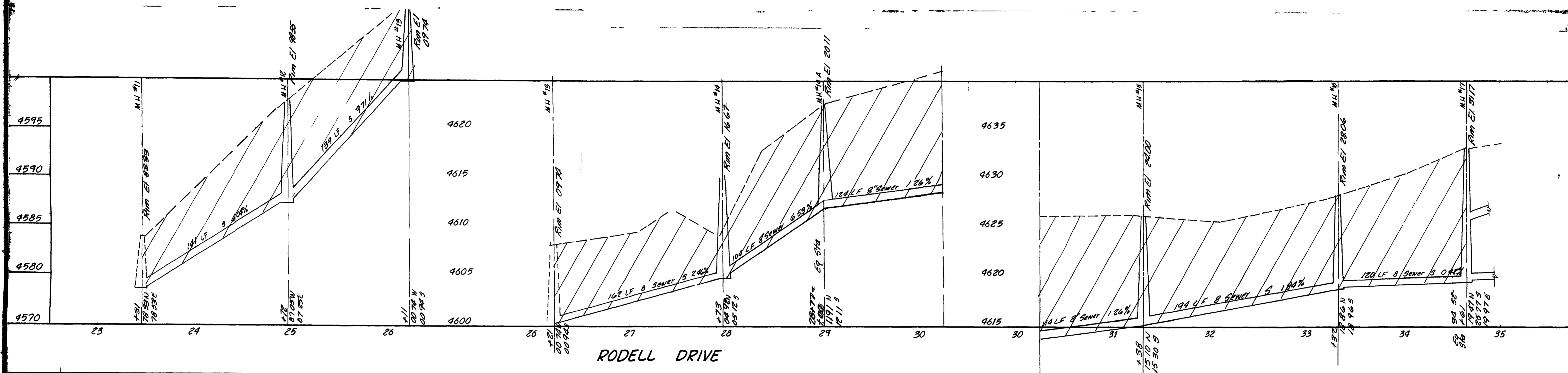
SECTION A A



AS BUILT DRAWINGS

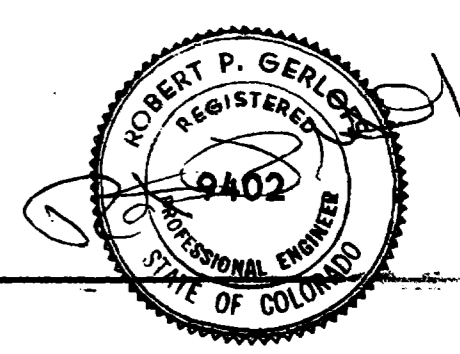
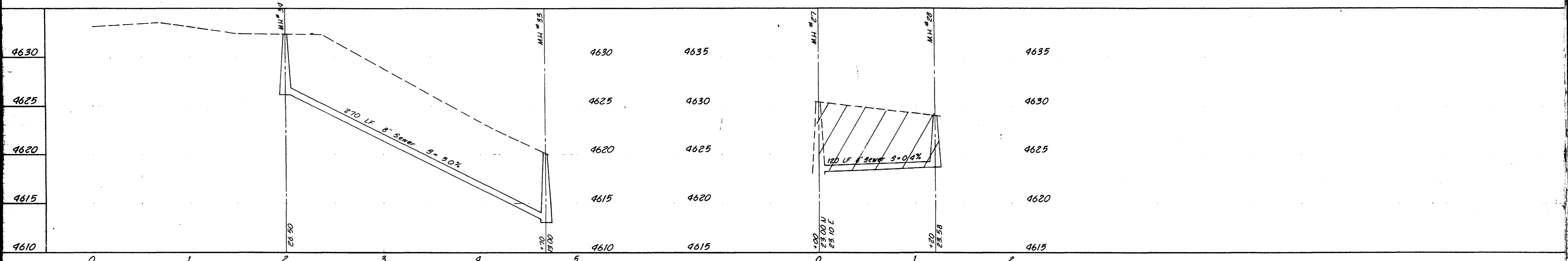
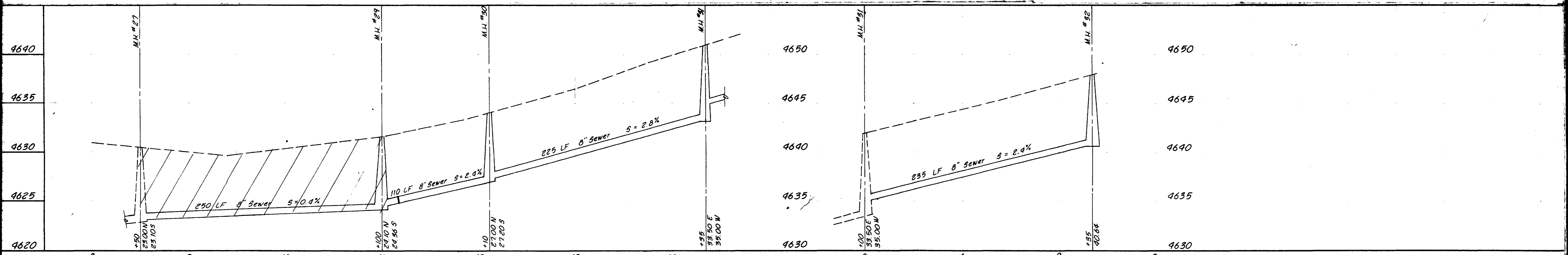
HEATHERIDGE ESTATES  
 MESA COUNTY COLORADO  
 SANITARY SEWER PLAN AND  
 DETAILS  
 SCALE 1/8" = 1'-0"  
 DATE: MARCH, 1992  
 PARSON ENGINEERING, INC.  
 Engineering Consultants  
 P.O. BOX 2872 GRAND JUNCTION COLORADO 81501 PHONE 243-9566

STANDARD CURVE



AS-BUILT DRAWINGS

HEATHERIDGE ESTATES  
 MESA COUNTY, COLORADO  
 SANITARY SEWER PROFILES  
 DATE: MARCH 1992  
 PARAGON ENGINEERING, INC.  
 Engineering Consultants  
 P.O. BOX 2872 GRAND JUNCTION, COLORADO 81501 PHONE 243-8968



AS BUILT DRAWINGS