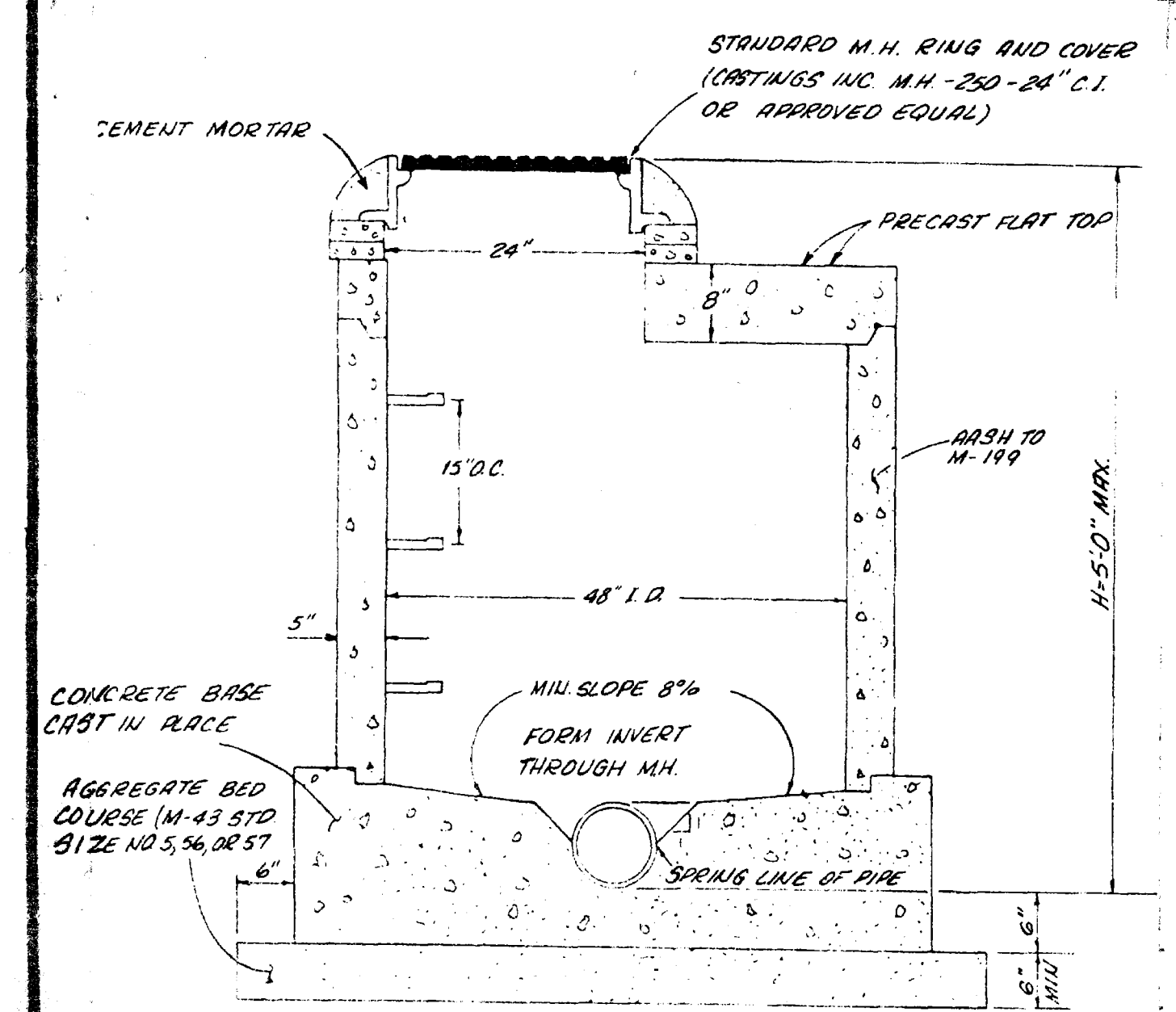
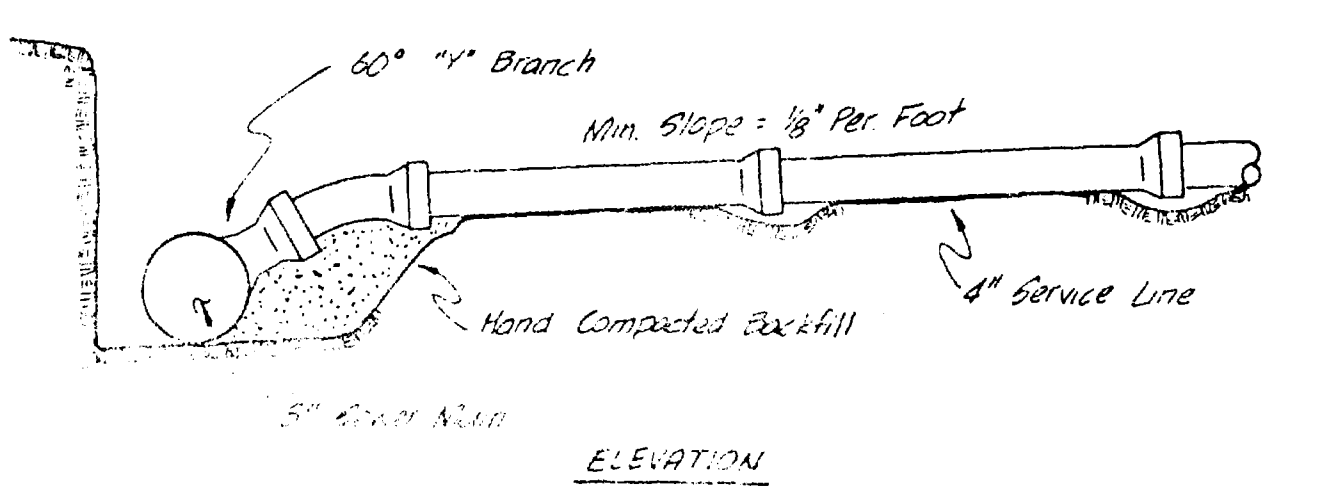
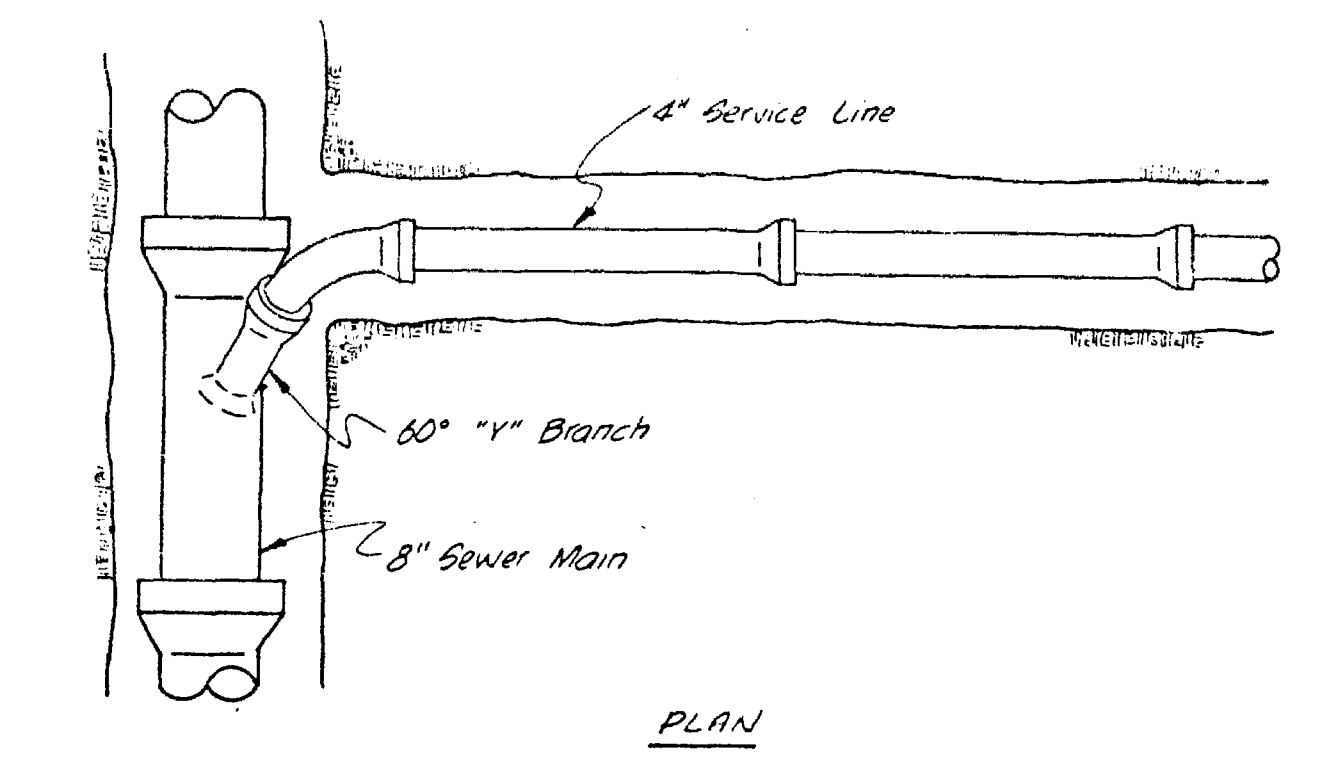
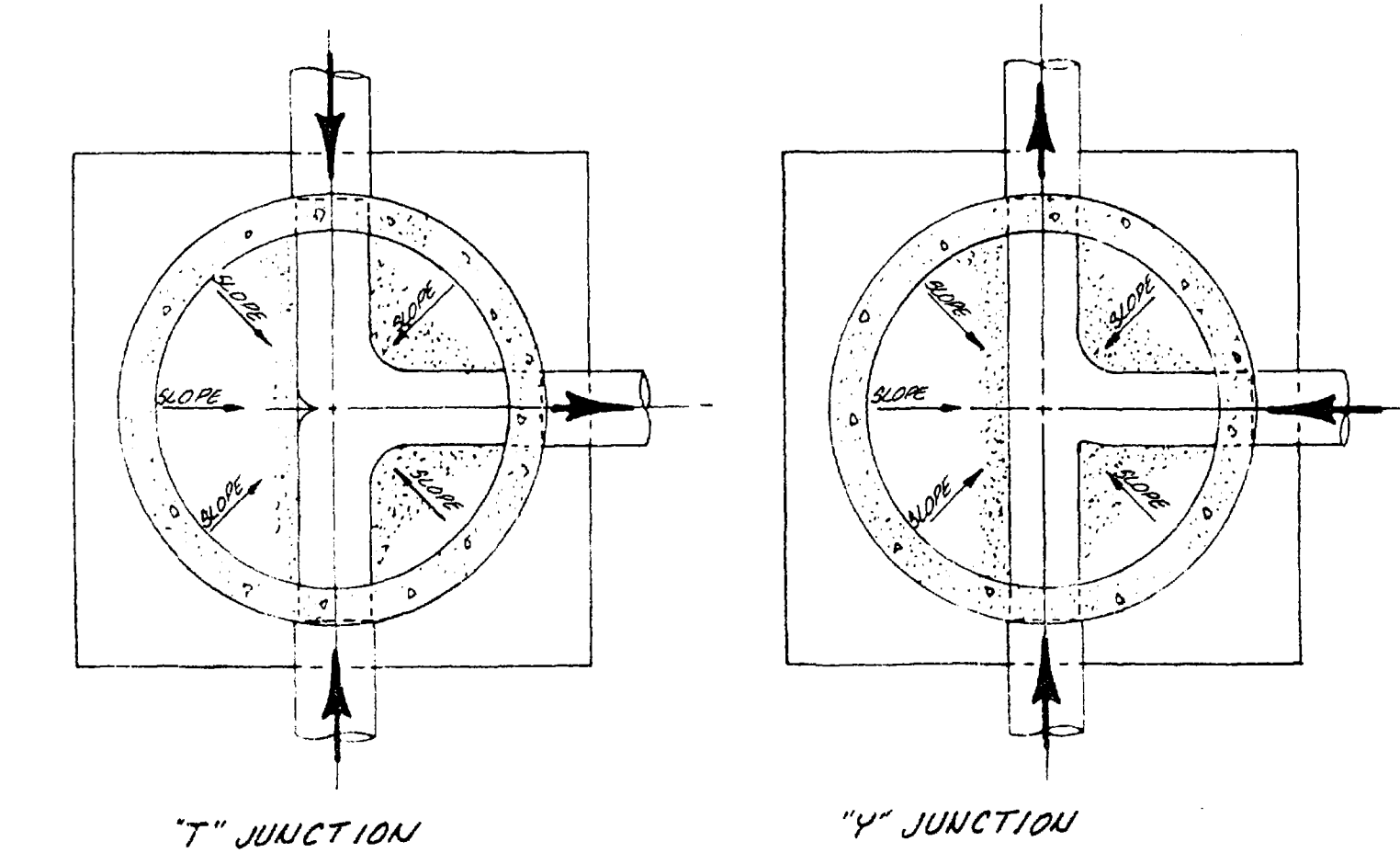


- NOTES**
1. Location of Service Connections To Be Determined At Time of Construction.
 2. All Construction To Be Done In Accordance With City of Grand Junction Specs.
 3. Top of Manhole Eccentric Cone To Be Set @ Top of Road Subgrade. (Road Contractor To Set Cover To Finished Road Grade.)
 4. Sanitary Sewer Lines To Be Constructed A Min. of 10.0 Ft. From Water Mains
 5. Service Lines shall Extend A Min. of 5.0 Ft. Beyond Road R.O.W.

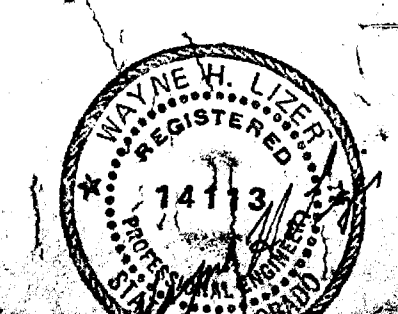
BENCH MARK:
Nail In Utility Pole At
Reach St. & Quay Ave.
Elev. 4555.56



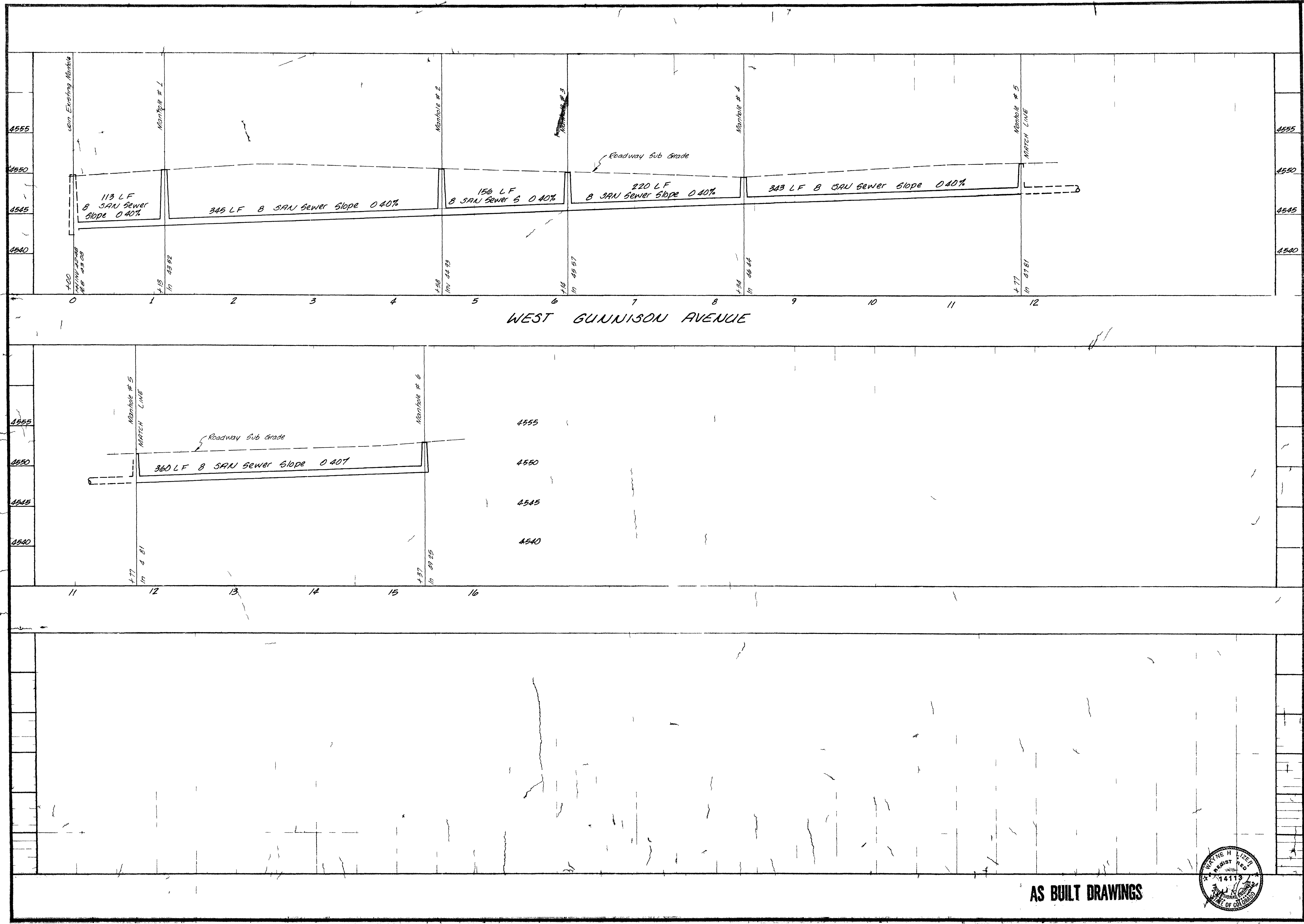
SANITARY SEWER QUANTITIES
6 MANHOLES
1537 L.F. 8" SANITARY SEWER



AS BUILT DRAWINGS

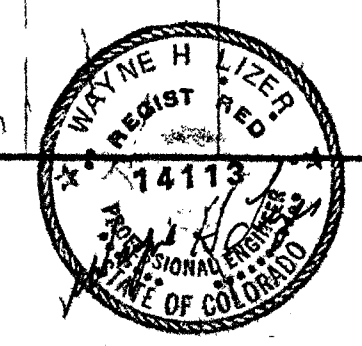


PARAGON ENGINEERING, INC.
 Engineering Consultants
 P.O. BOX 2872, GRAND JUNCTION, COLORADO, U.S.A. PHONE 743-8956
 DATE: 10/17/78
 SHEET: 2 OF 2
 SANITARY SEWER PLAN
 6 AND 50 WEST SUBDIVISION
 GRAND JUNCTION, COLORADO
 FILE NO. 14113



WEST GUNNISON AVENUE

AS BUILT DRAWINGS



PARAGON ENGINEERING
 SAUITARY SEWER PROFILES
 6 and 50 WEST SUBDIVISION
 BRAND JUNCTION, COLORADO
 SHEET 2 OF 2