

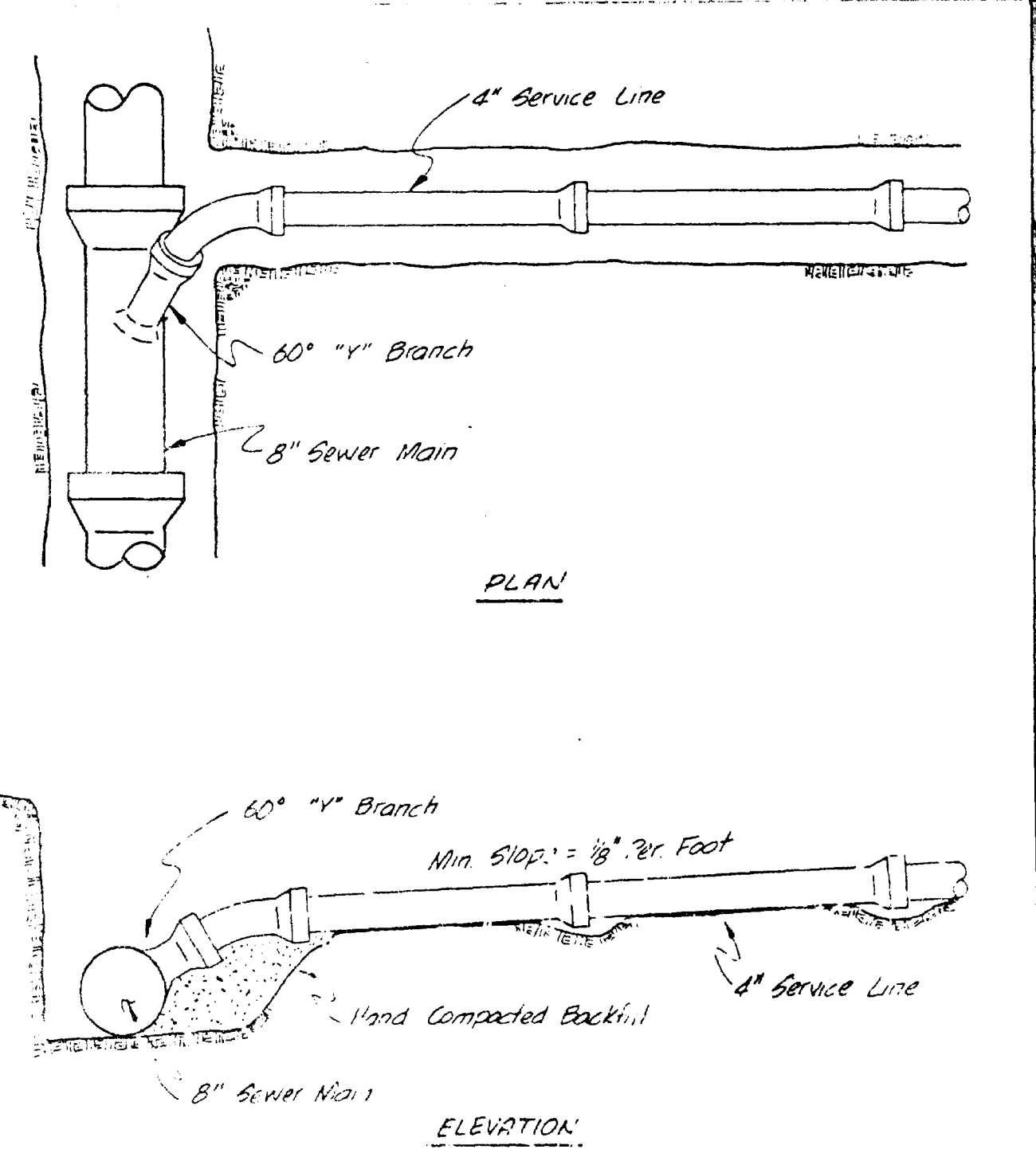
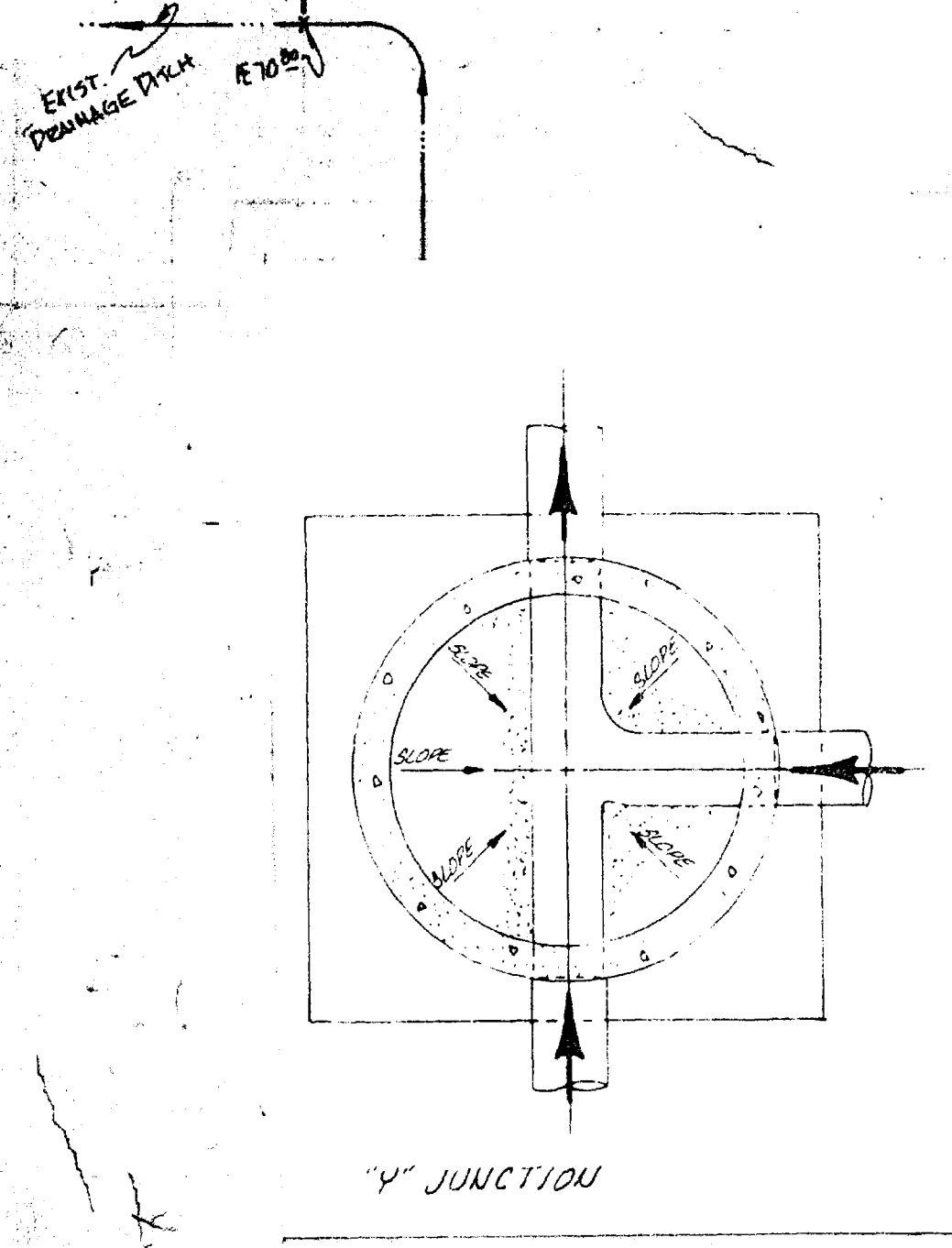
MH#6 C
STA 12+92
PEAV DE 8 STRUB TO SOUTH

FUTURE CONSTRUCTION

EXISTING CON IRRIGATION DITCH

EXISTING CON IRRIGATION DITCH

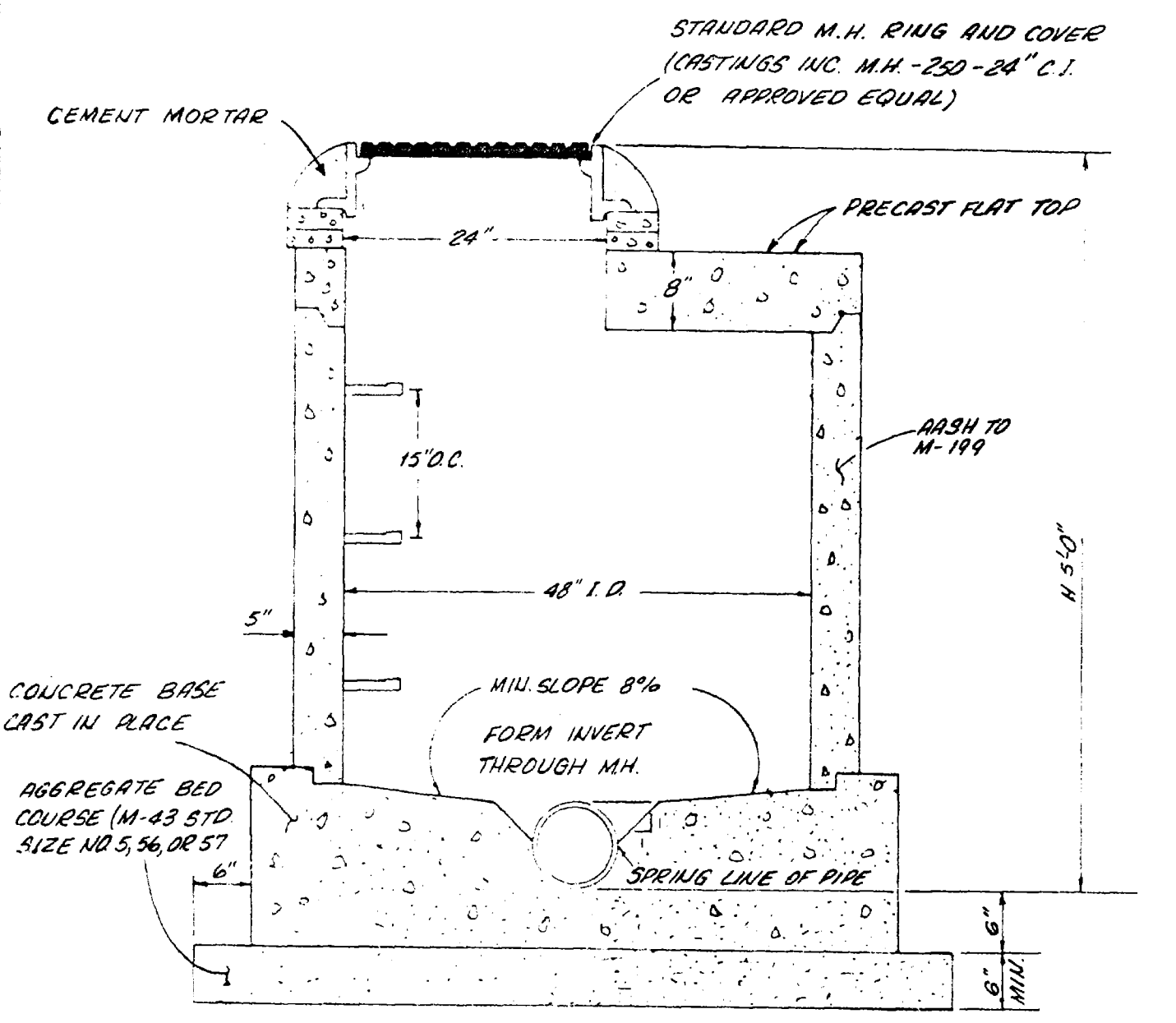
SCALE: 1"=50'



A final inspection determined that infiltration does not exceed 200 gallons per inch diameter per mile of length per day.

- QUANTITIES**
- 3126 L.F. 8" SAN SEWER
 - 14 SHALLOW MANHOLES
 - 58 SERVICE CONNECTIONS

- GENERAL NOTES**
1. TOP OF ECCENTRIC CONE TO BE SET AT TOP OF CURB/RADE. (STREET CONTRACTOR TO SET RIAS TO FINISH GRADE OF STREET.)
 2. ALL CONSTRUCTION TO BE DONE IN ACCORDANCE WITH THE ORCHARD/MESA SANITATION DISTRICT SPECIFICATIONS
 3. ALL SERVICE LINES SHALL EXTEND A MINIMUM OF 10 FEET BEYOND THE PROPERTY LINE.



STANDARD SHALLOW MANHOLE

APPROVED *Kenneth D. Taylor* DATE 2/7/20
ORCHARD MESA SANITATION DIST

AS BUILT DRAW

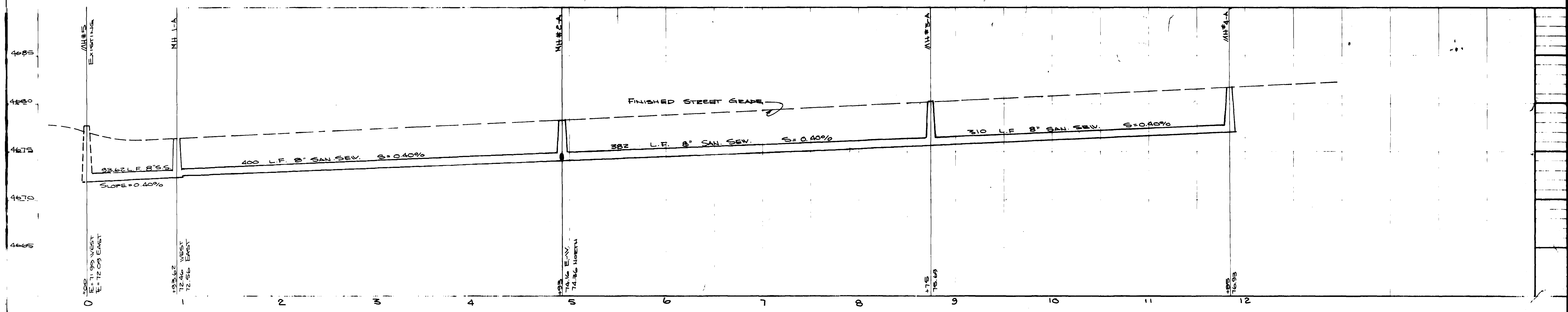
ROBERT P. GERI, P.E.
Engineering Consultant

DATE: 04-11-20
SCALE: AS SHOWN

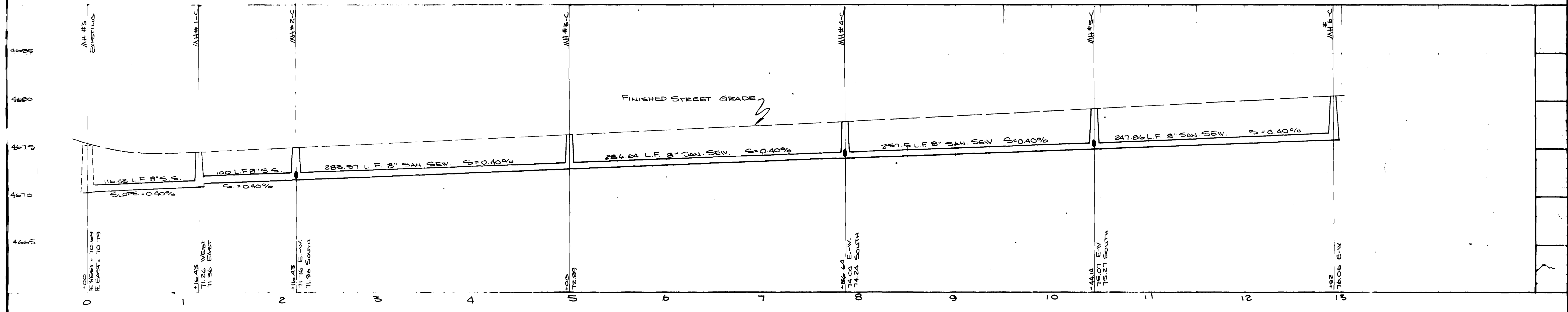
SANITARY SEWER PLANS

LINA LINDA SUBDIVISION, FIRST ADDITION
MESA COUNTY, COLORADO

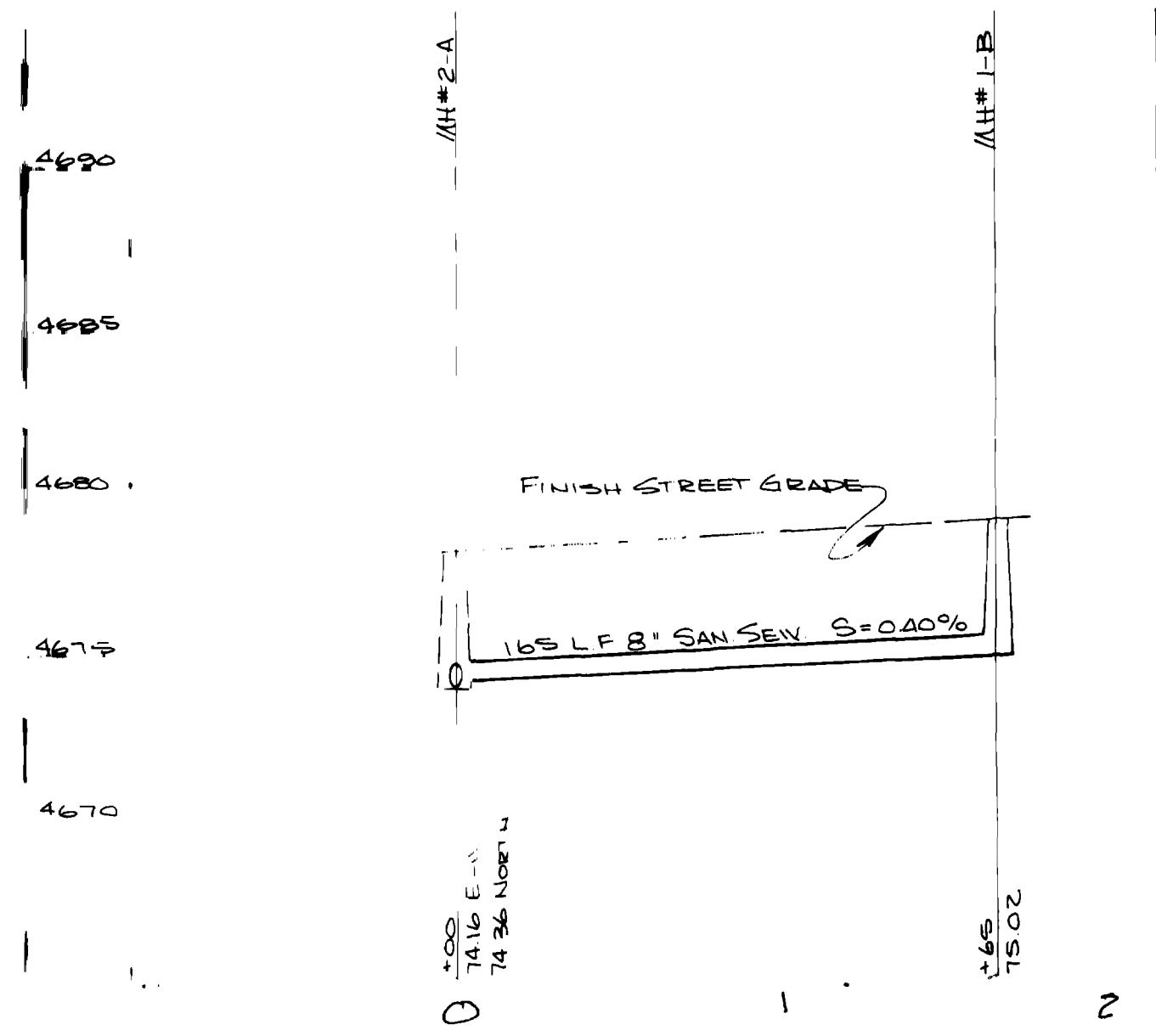
SHEET 1



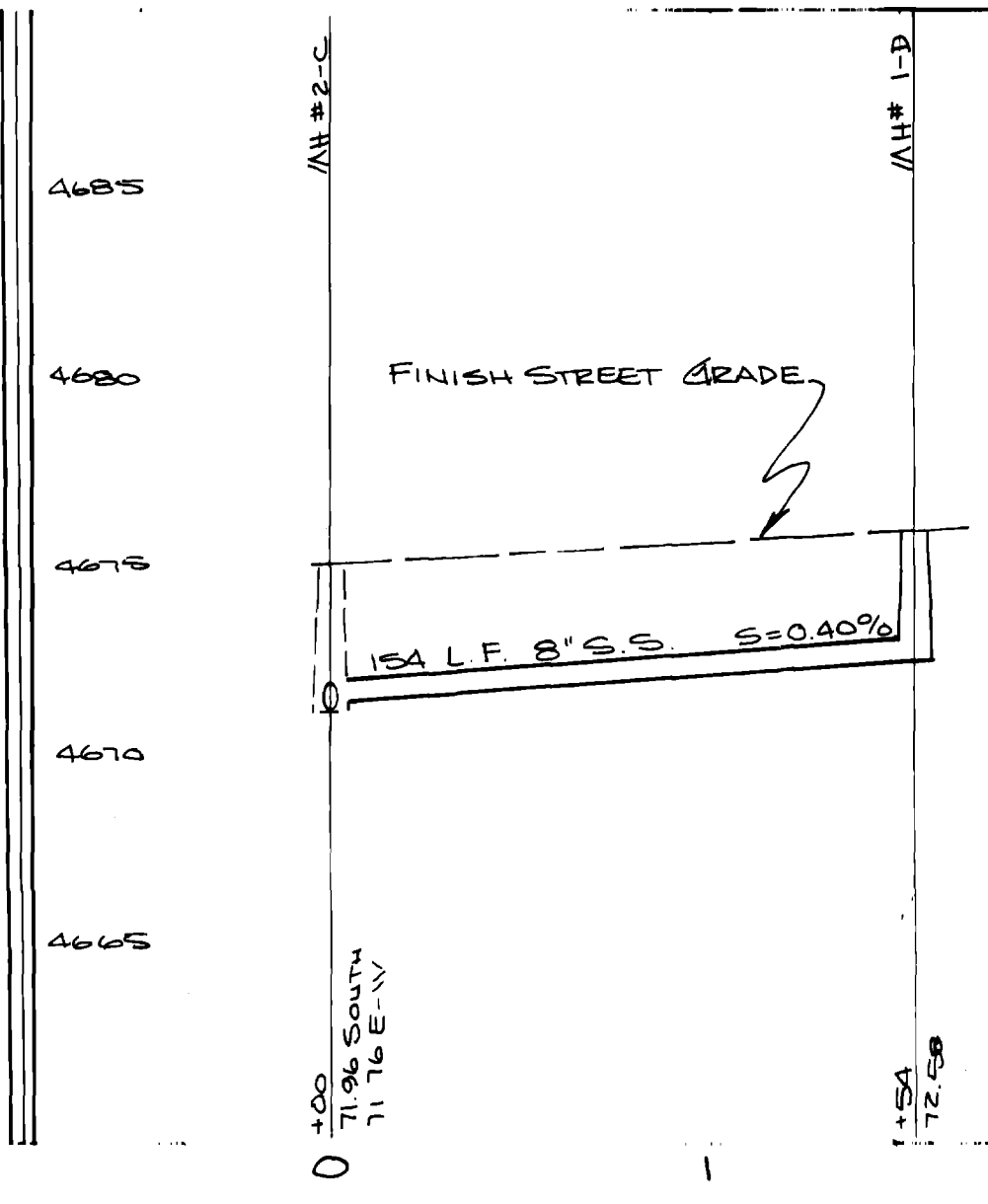
"A" LINE: EL TORRO ROAD



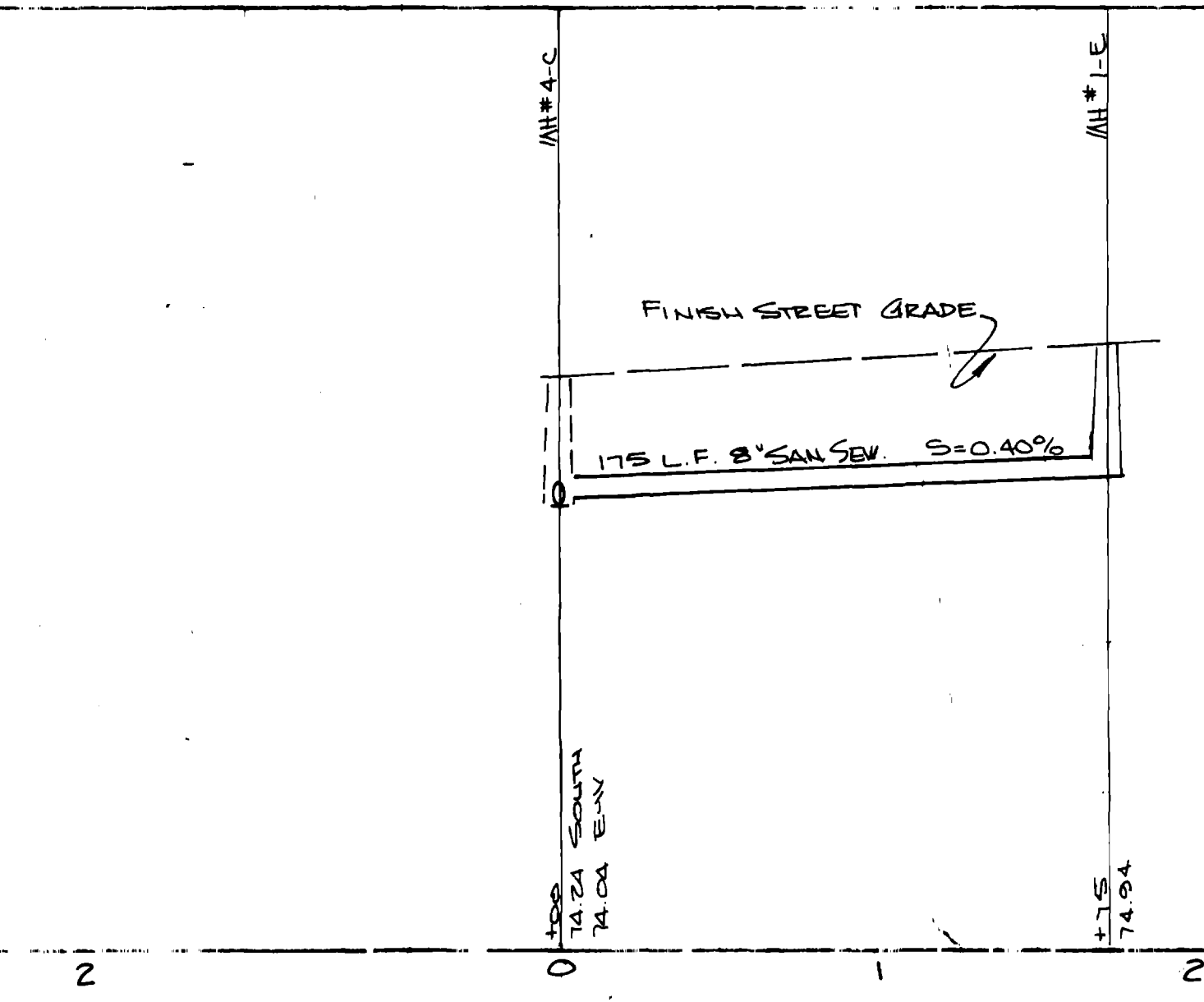
"C" LINE: KATHY JO LANE



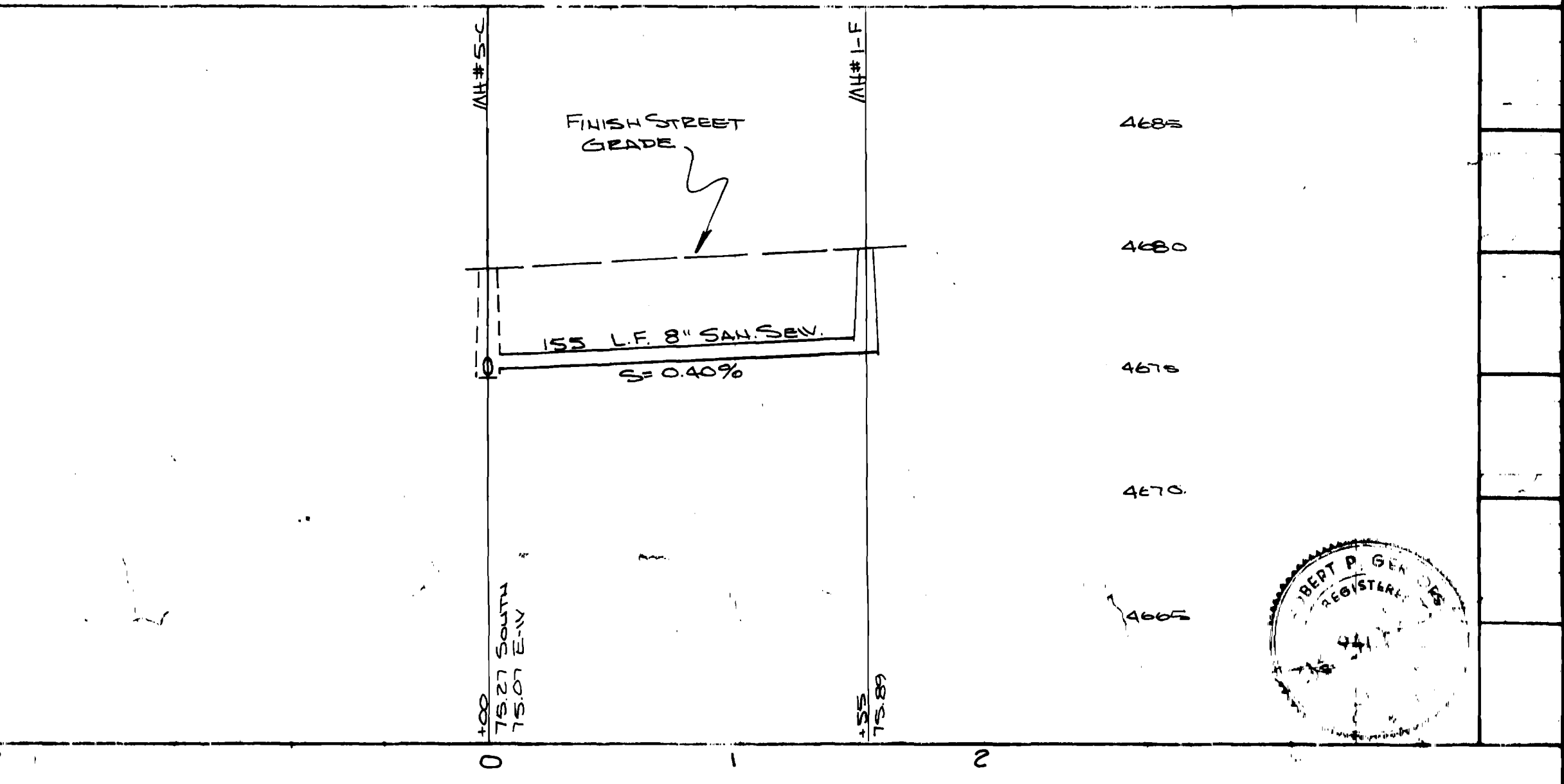
"B" LINE



"D" LINE



"E" LINE



"F" LINE

AS BUILT DRAWINGS

