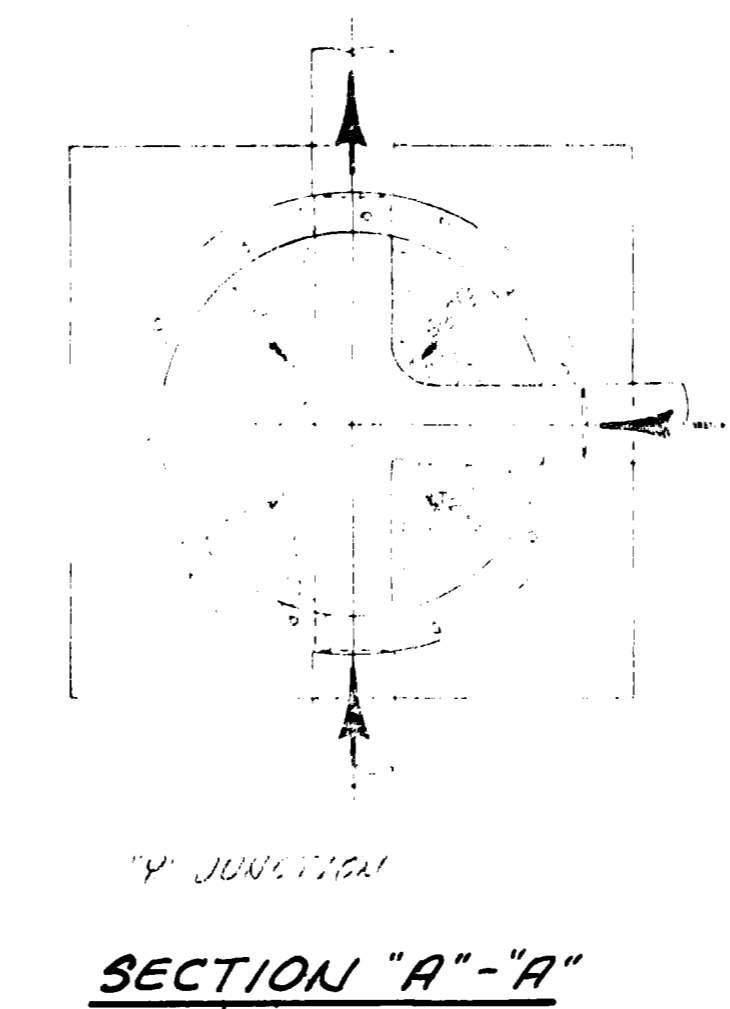
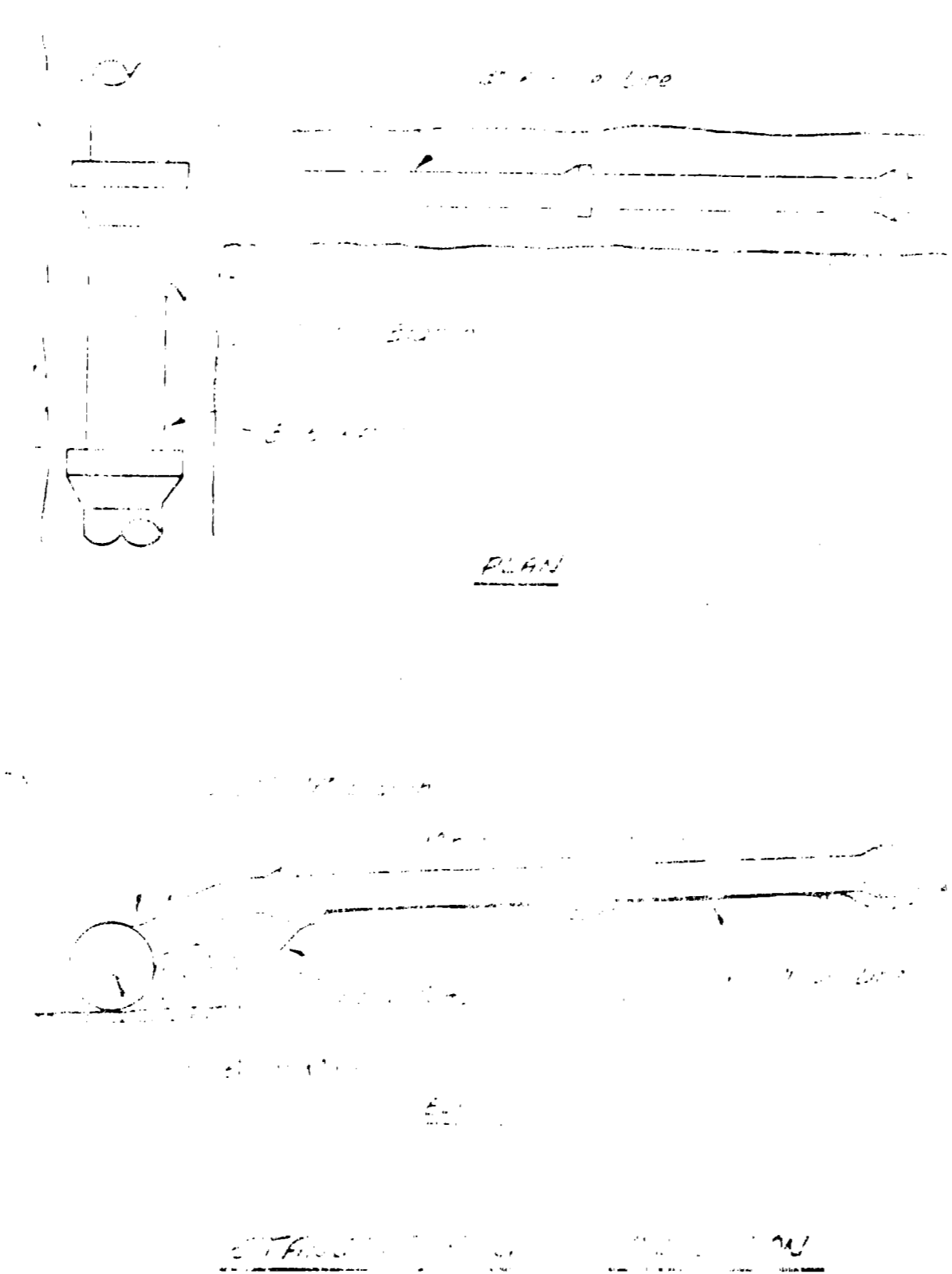
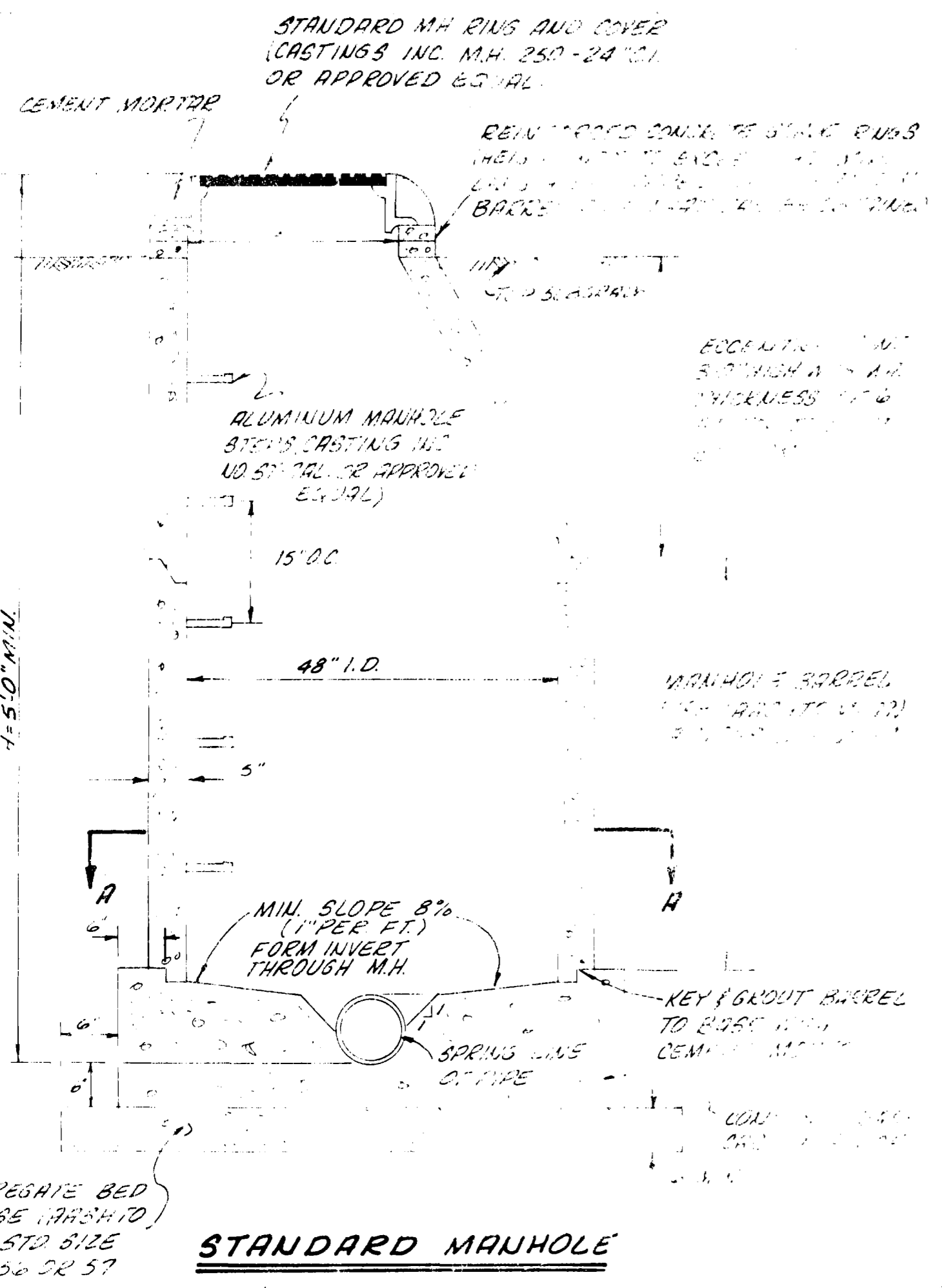
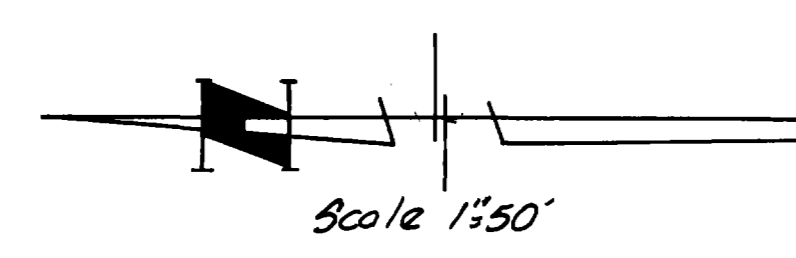
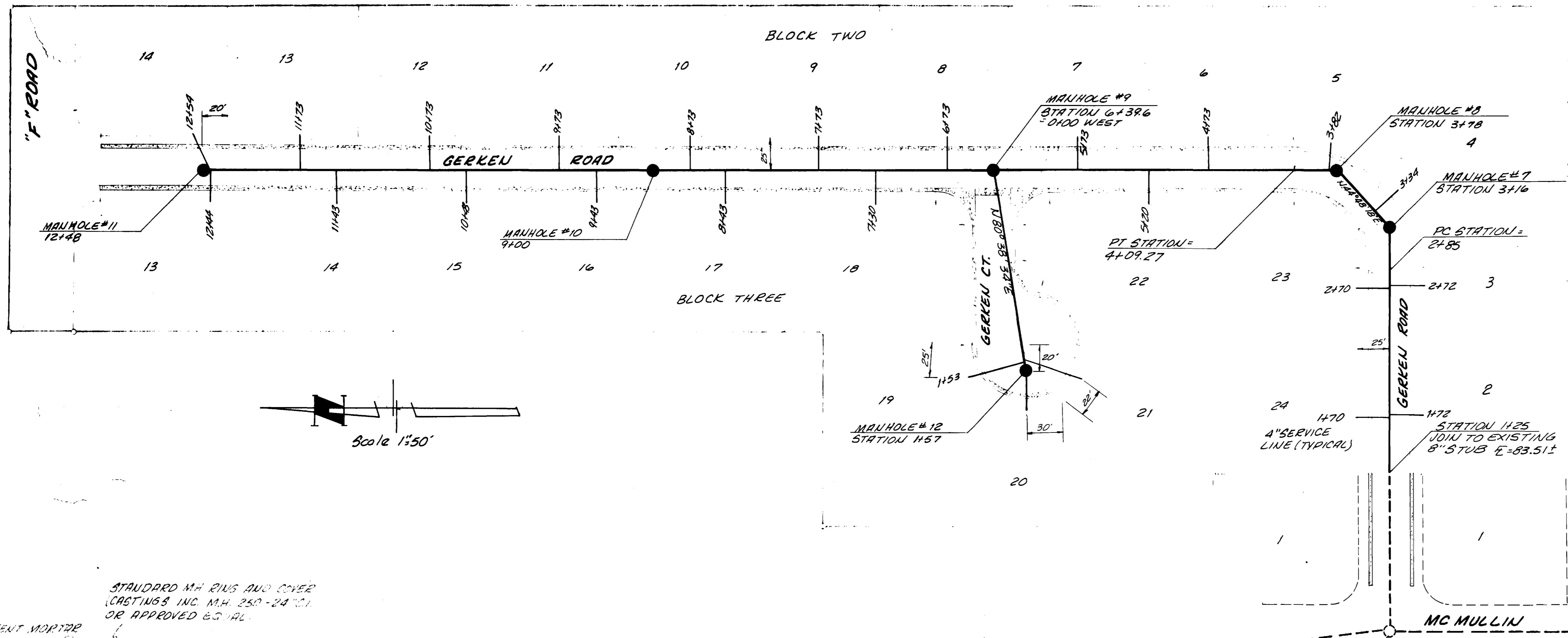


BENCH MARK
NAIL IN RR
ELEV. 4706.13



A final inspection determined that infiltration does not exceed 200 gallons per inch diameter per mile of length per day.

BENCH MARK
NAIL IN POWER POLE
NW COR BOOKCLIFF & MC MULLIN
ELEV. 4692.82

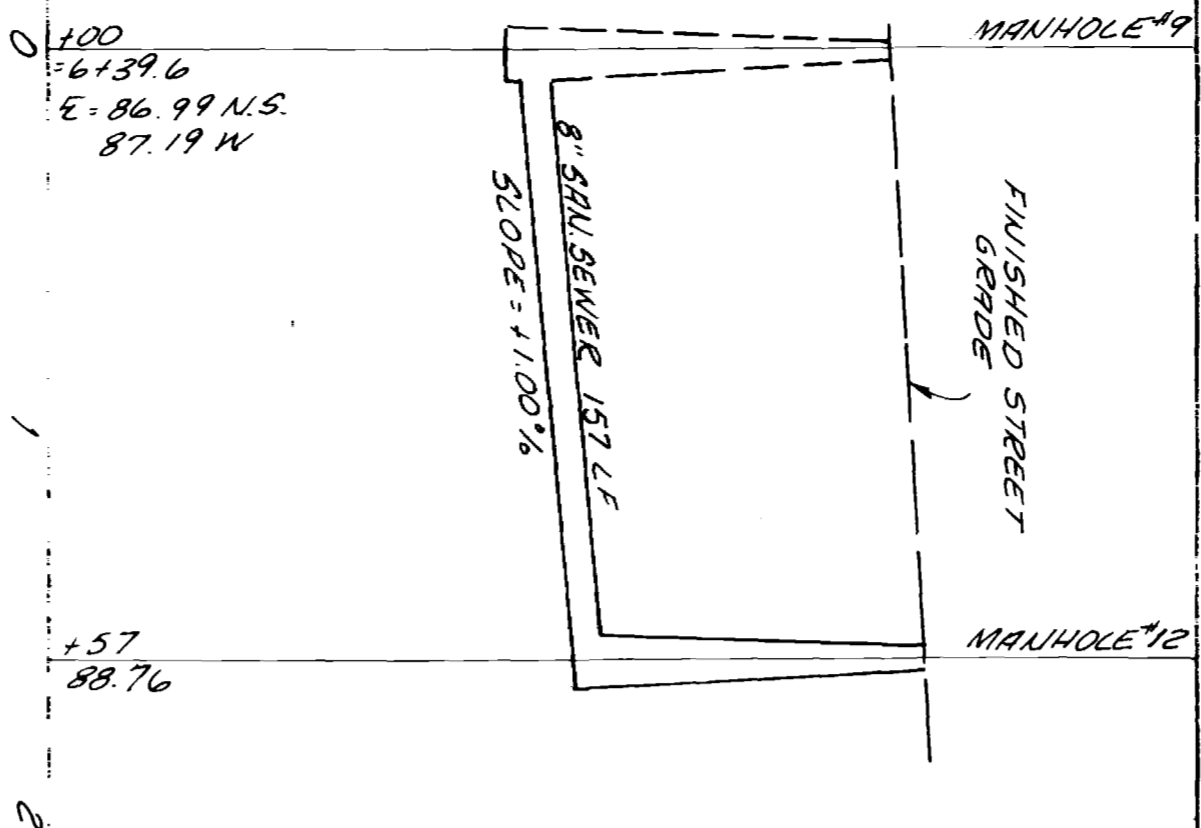
QUANTITIES
1280 LF 8" SANITARY SEWER
6 MANHOLES "STANDARD"
25 4" SERVICE LINES

- GENERAL NOTES
1. ALL CONSTRUCTION TO BE DONE IN ACCORDANCE WITH THE CENTRAL GRAND VALLEY SANITATION DISTRICT SPECIFICATIONS
 2. TOP OF ECCENTRIC CONE TO BE SET @ TOP SUBGRADE (STREET CONTRACTOR TO SET RIMS TO FINISH GRADE)
 3. ALL 4" SERVICE LINES TO BE EXTENDED 10' FEET INSIDE PROPERTY LINES.

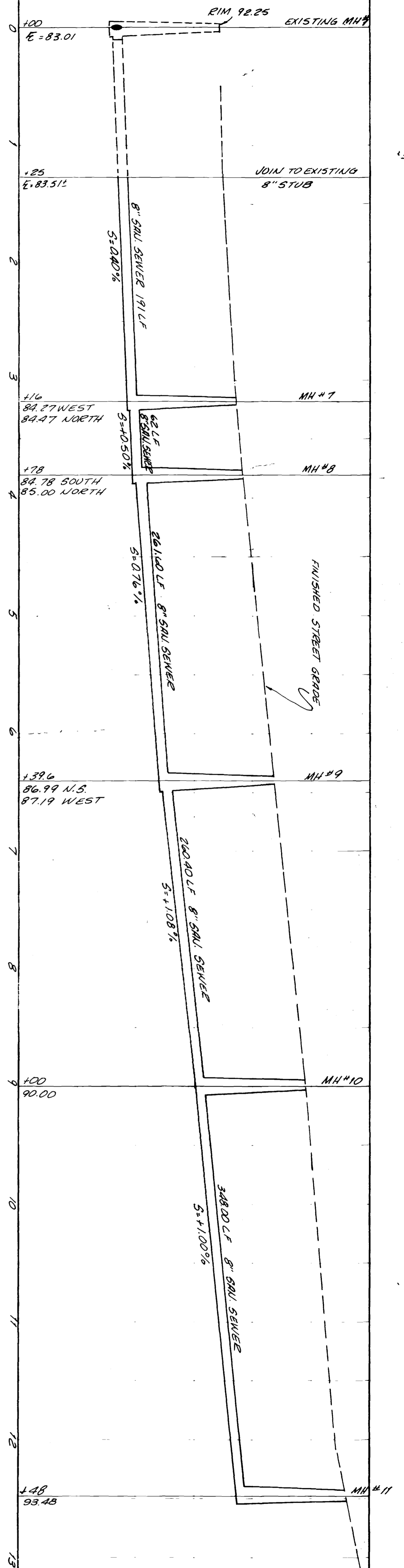
APPROVED _____ DATE _____
CENTRAL GRAND VALLEY SANITATION DISTRICT

DEC, 1977
 1"=50'
 SANITARY SEWER
 PLAN AND DETAILS
 CLINE SUBDIVISION FILING NO THREE
 MESA COUNTY, COLORADO

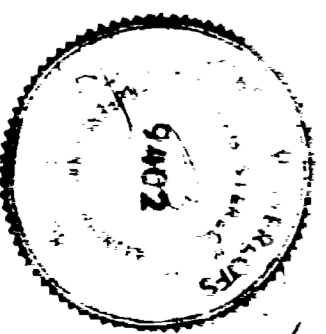
GERREU COURT



GERREU ROAD



AS BUILT DRAWINGS



CLINE SUBDIVISION FILING NO. THREE
MESA COUNTY, COLORADO

SAUITARY SEWER
PROFILES

DATE DEC. 1977
SCALE 1" = 5' VERT.
1" = 50' HORIZ.

PARAGON ENGINEERING, INC.
Engineering Consultants

PO BOX 2872 • GRAND JUNCTION, COLORADO • 81501 • PHONE 243 8966