

EXISTING MH
RIM = 84.48
E = 76.79

JOIN TO
EXISTING MH
STA 0+00 NDETH
RIM 85.18
E SOUTH = 76.09
E EAST = 76.34
E WEST = 77.95

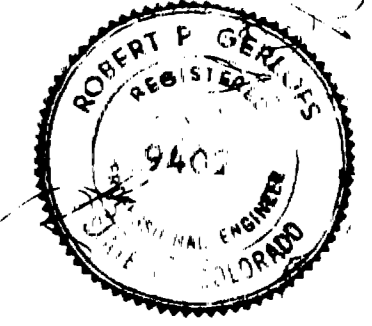
BENCH MARK #1
TOP REBAR
ELEV 4697.33

EXISTING MH
RIM = 85.50
E = 79.27

QUANTITIES
4555 LF 8" SANITARY SEWER
17 STANDARD MANHOLES
68 4" SERVICE LINES

A final inspection determined that infiltration does not exceed 200 gallons per inch diameter, per mile of length per day.

GENERAL NOTES
1. TOP OF ECCENTRIC CONE TO BE SET @ TOP OF SUBGRADE (STREET CONTRACTOR TO SET RIMS TO FINISH GRADE OF STREET)
2. ALL CONSTRUCTION TO BE DONE IN ACCORDANCE WITH THE CENTRAL GRAND VALLEY SANITATION DISTRICT SPECIFICATIONS.

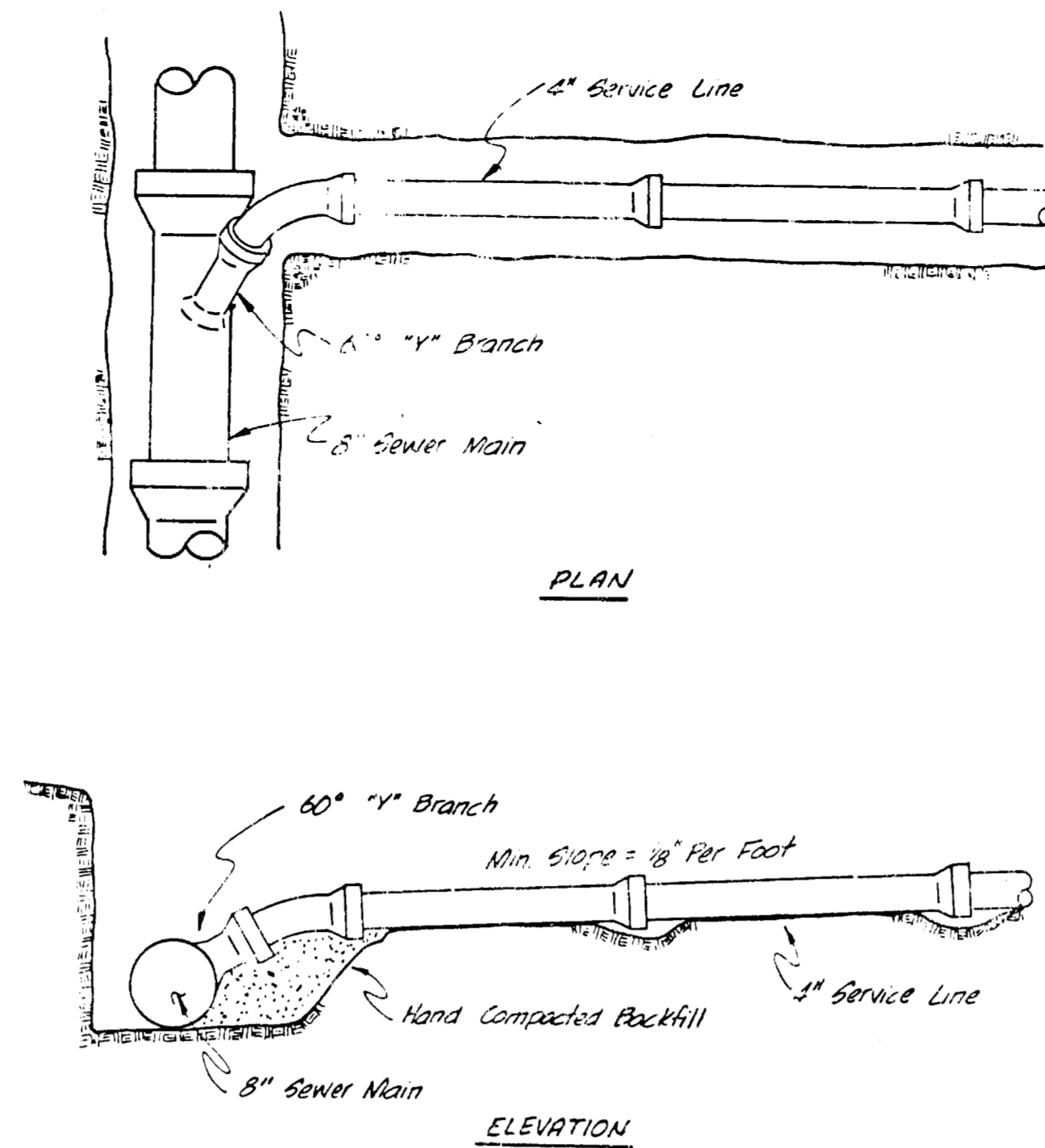
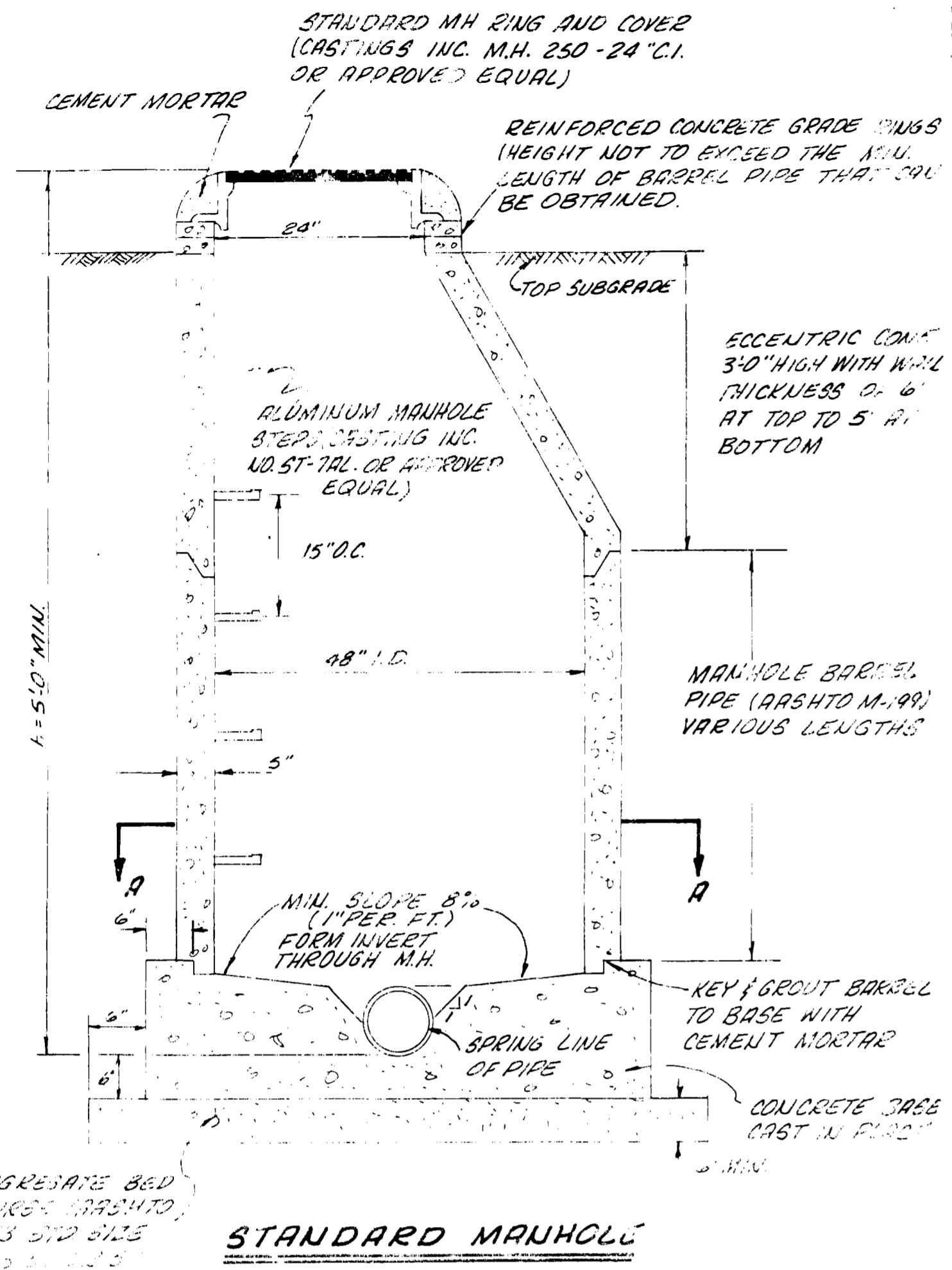


AS BUILT DRAWINGS

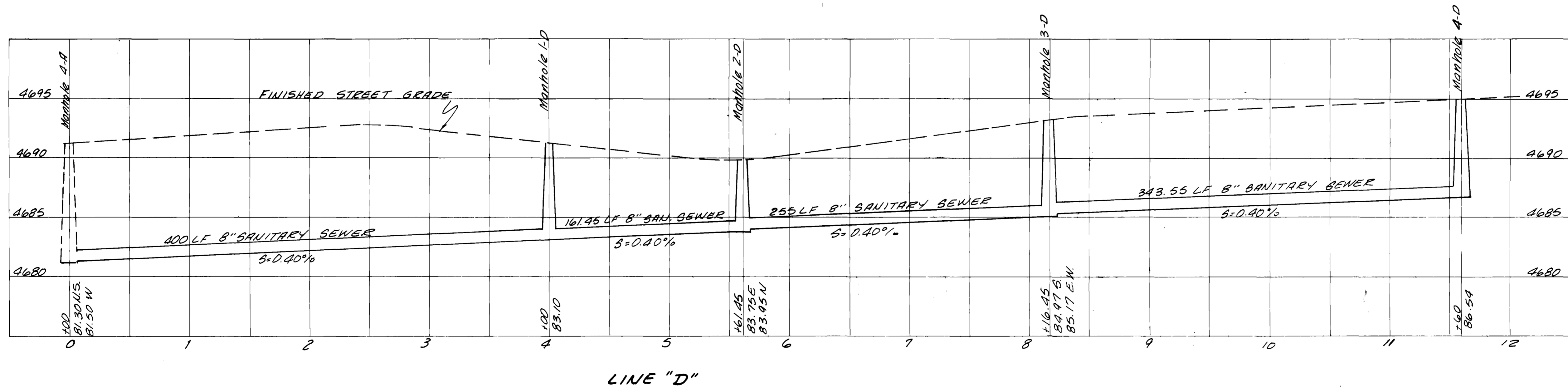
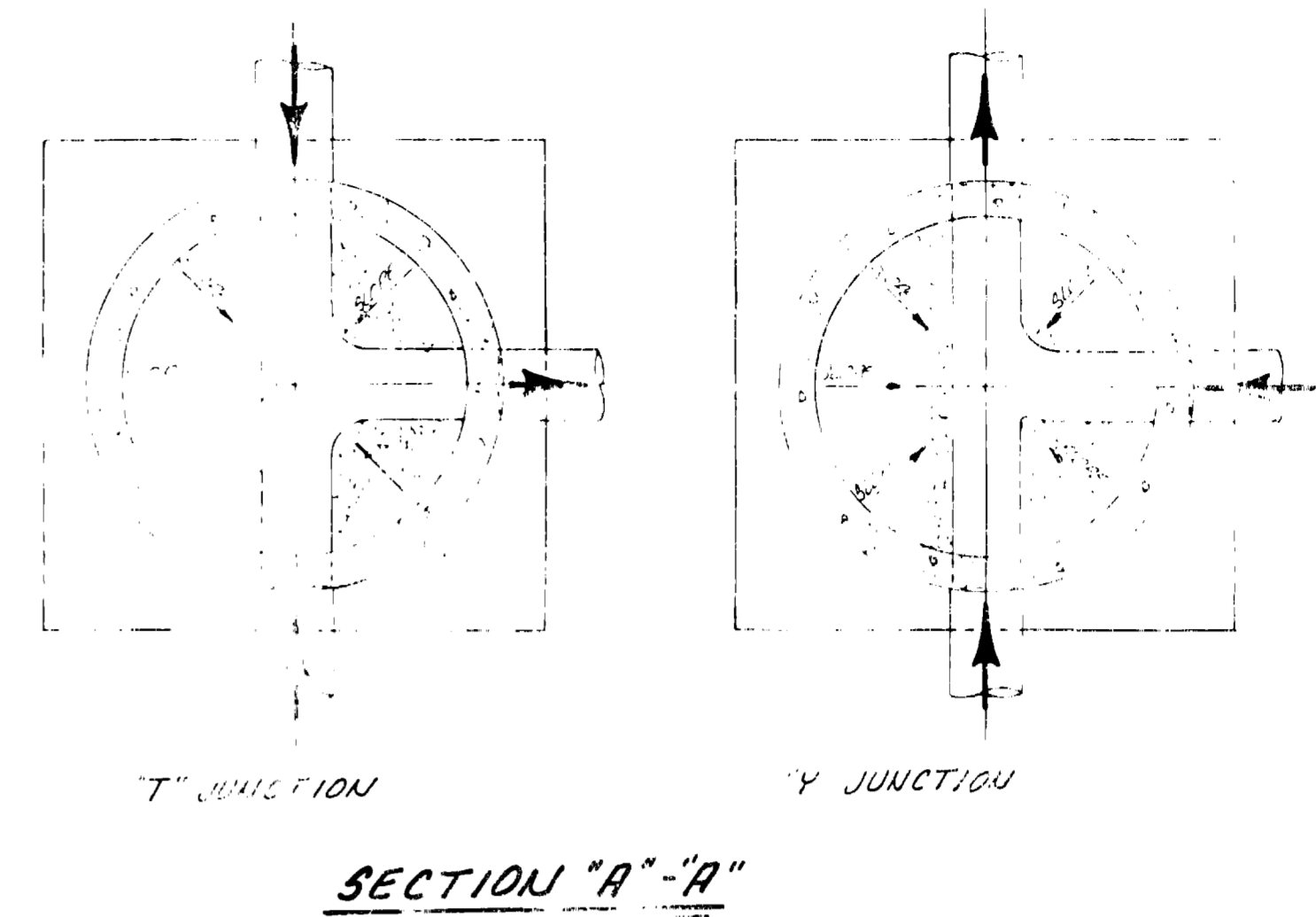
APPROVED
CENTRAL GRAND VALLEY SANITATION DISTRICT

BENCH MARK #3
TOP REBAR
ELEV 4686.14

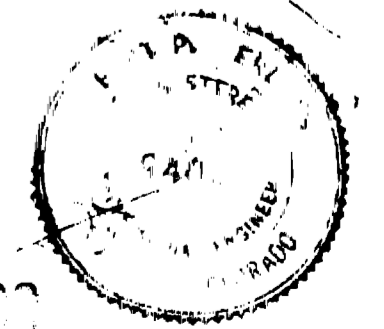
EASTBROOK SUBDIVISION
 NEAR QUANTITY, COLORADO
 SAUNITARY SEWER PLAN
 DEC 1977
 1950



STANDARD SERVICE CONNECTION
No Scale



AS BUILT DRAWING

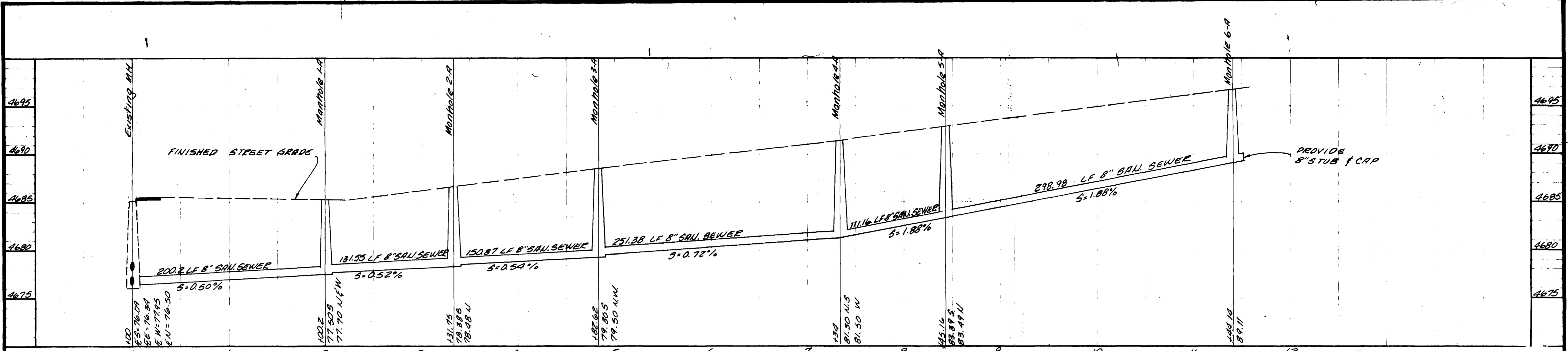


DEC. 1977

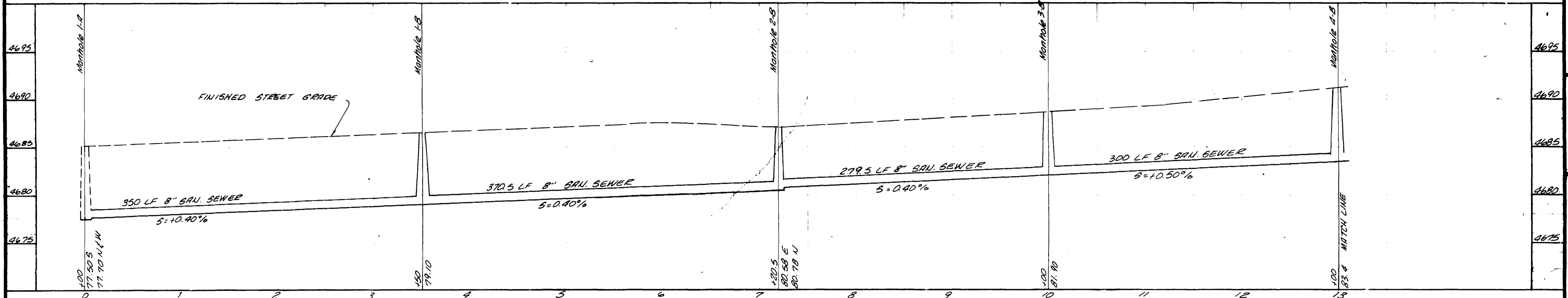
SCALE 1/4" = 1'-0"

SANITARY SEWER DETAILS
AND PROFILES

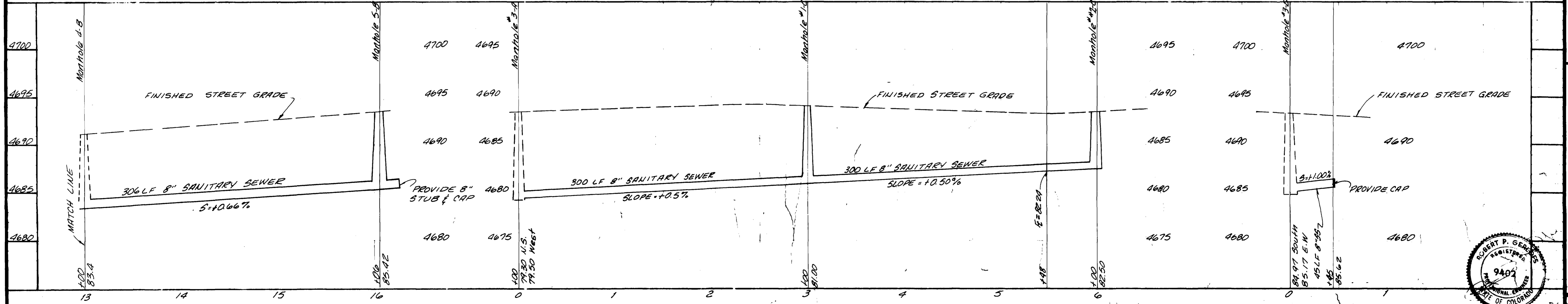
EASTBROOK SUBDIVISION
MESA COUNTY, COLORADO



LINE "A"



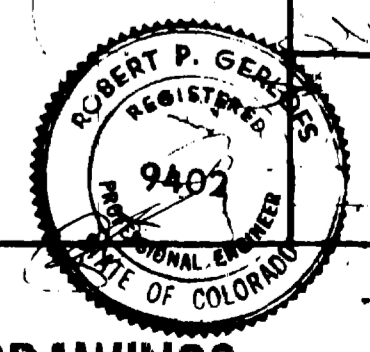
LINE "B"



LINE "C"

LINE "E"

AS BUILT DRAWING



PARAGON ENGINEERING, INC.
 P.O. BOX 2872 • GRAND JUNCTION, COLORADO • 81501 • PHONE 243-8966
 DATE DEC. 1977
 SCALE 1" = 5' VERT.
 1" = 50' HORIZ.
 EASTBROOK SUBDIVISION
 MESA COUNTY, COLORADO
 SHEET 4 OF 5