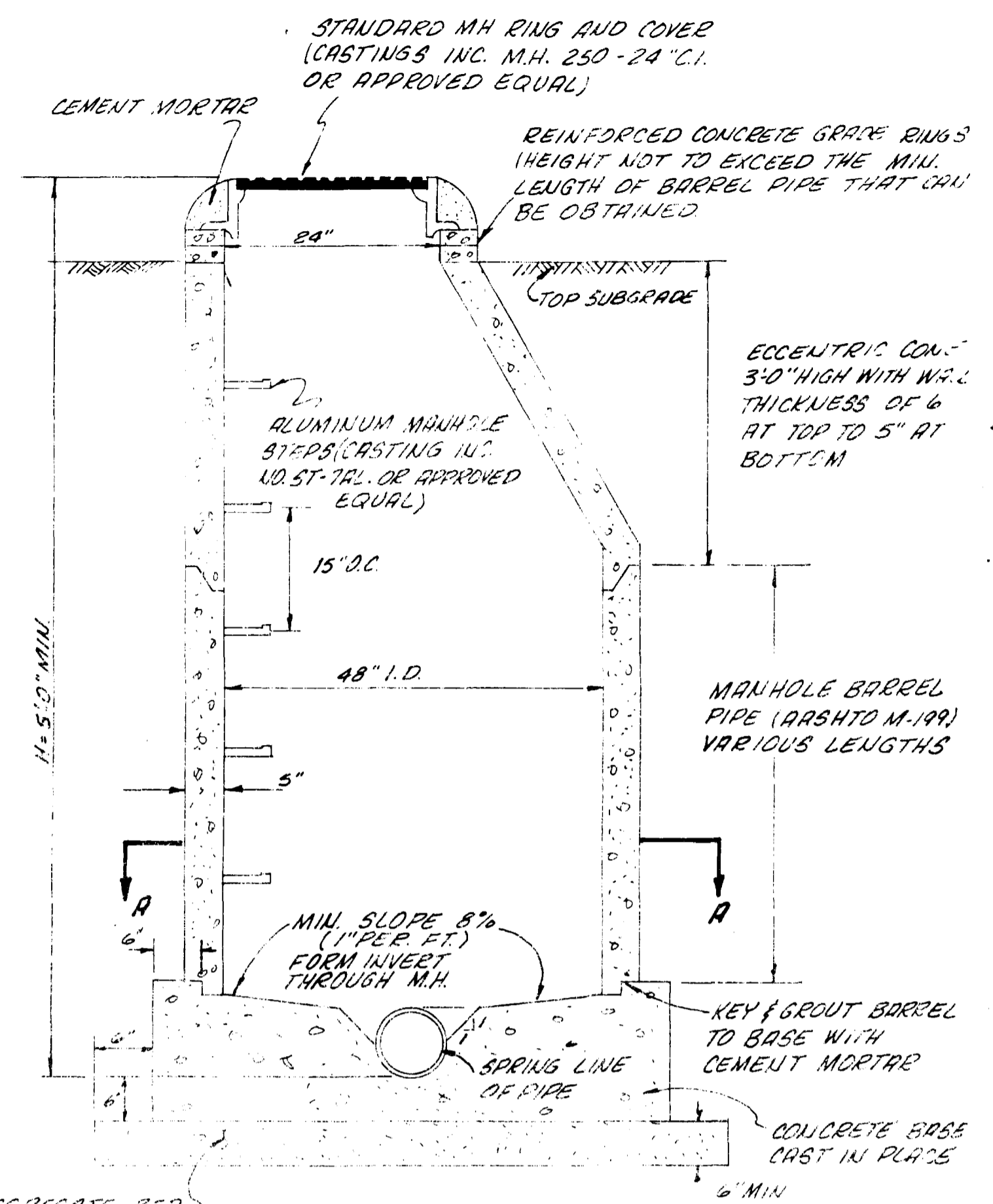
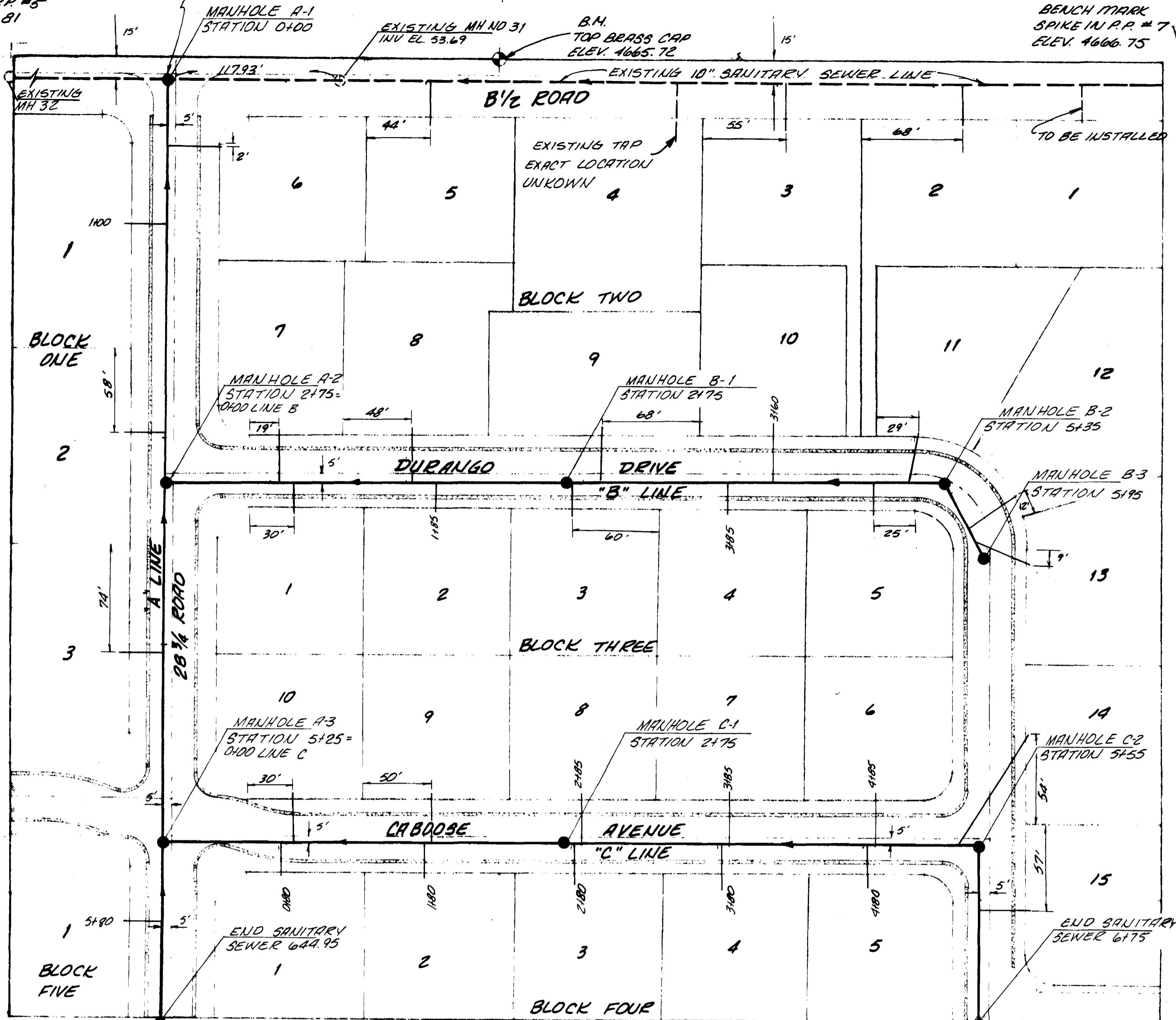


BENCH MARK
NAIL IN P.P. #5
ELEV. 4664.81

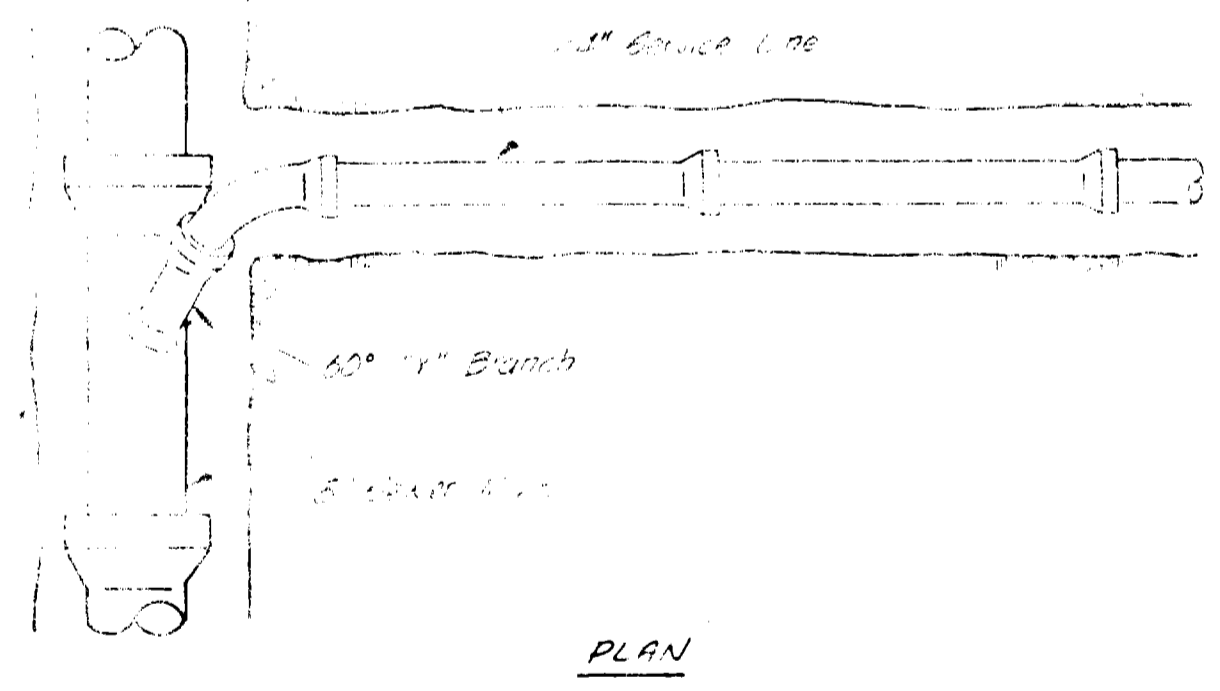
NOTE MH A-1 =
NORTH MAIN STATION 105+40
WESTERN ENGINEERS DRAWING
207-754-1 SHEET 6-N

BENCH MARK
SPIKE IN P.P. #7
ELEV. 4666.75



AGGREGATE BED COURSE 19.5" TO 1" 43" 5" D. L. 25" 1.0, 5, 3.0 OR 5"

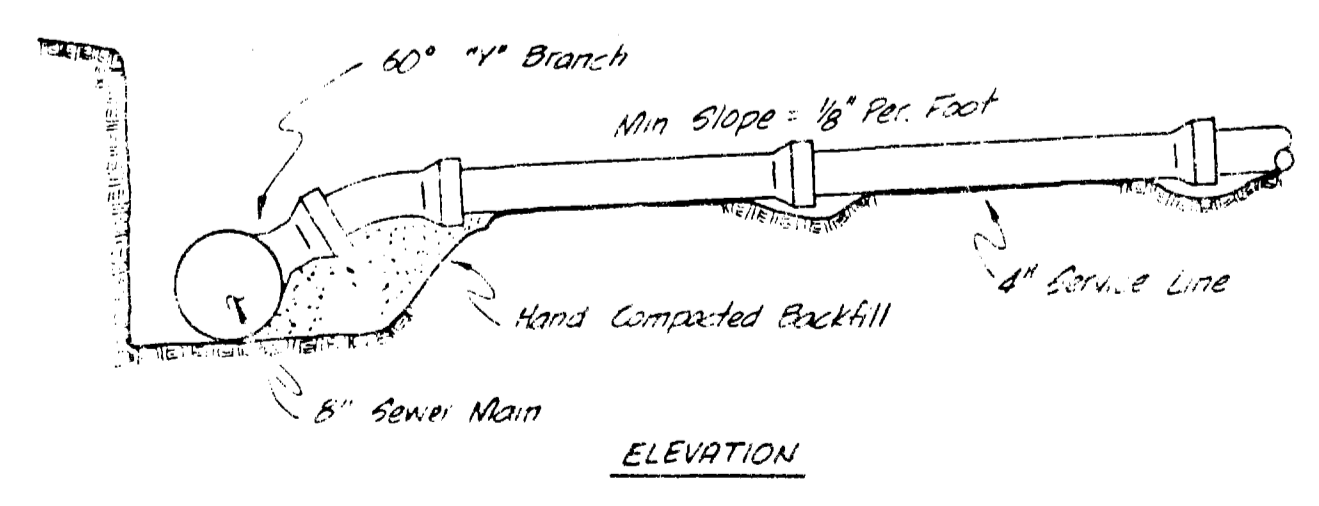
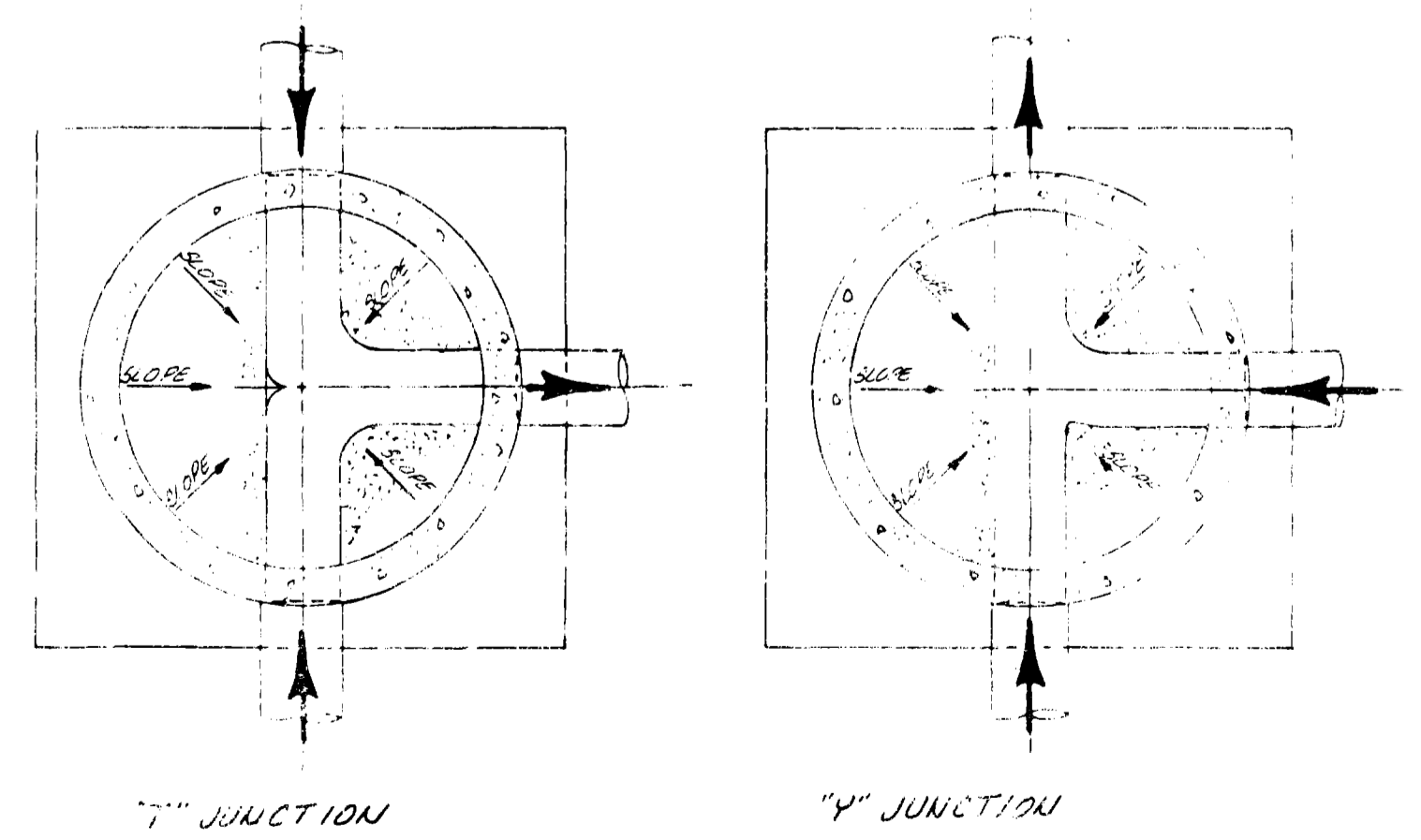
STANDARD MANHOLE



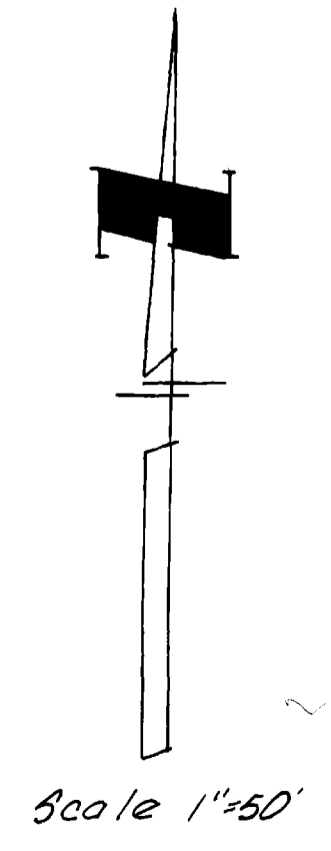
QUANTITIES
8 STANDARD MANHOLES
1915 LF 8" SANITARY SEWER
24 SERVICE CONNECTION

A final inspection determined that infiltration does not exceed 200 gallons per inch diameter per mile of length per day.

NOTES:
1. ALL CONSTRUCTION TO BE DONE IN ACCORDANCE WITH THE ORCHARD MESA SANITATION DISTRICT SPECIFICATIONS.
2. TOP OF ECCENTRIC CONE TO BE SET @ TOP OF SUBGRADE (STREET CONTRACTOR TO SET RIMS TO FINISH GRADE OF STREET).



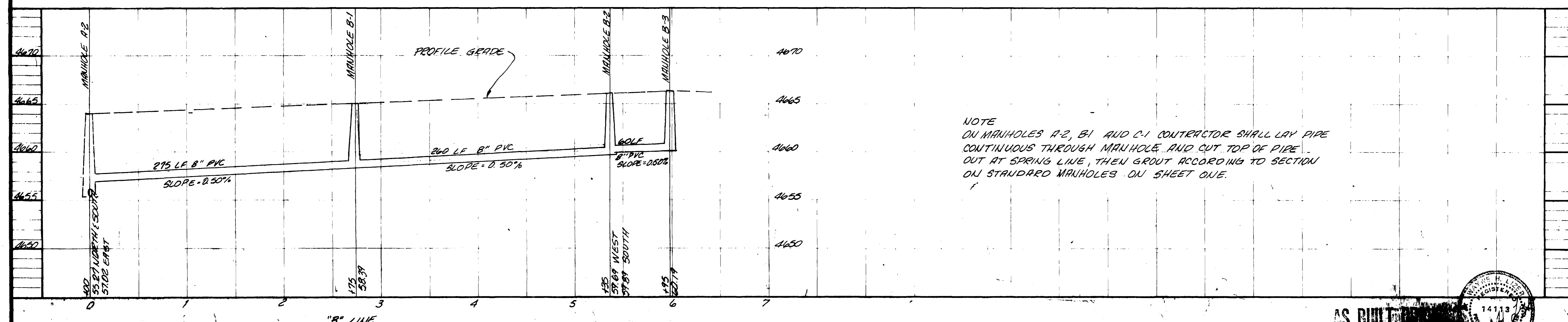
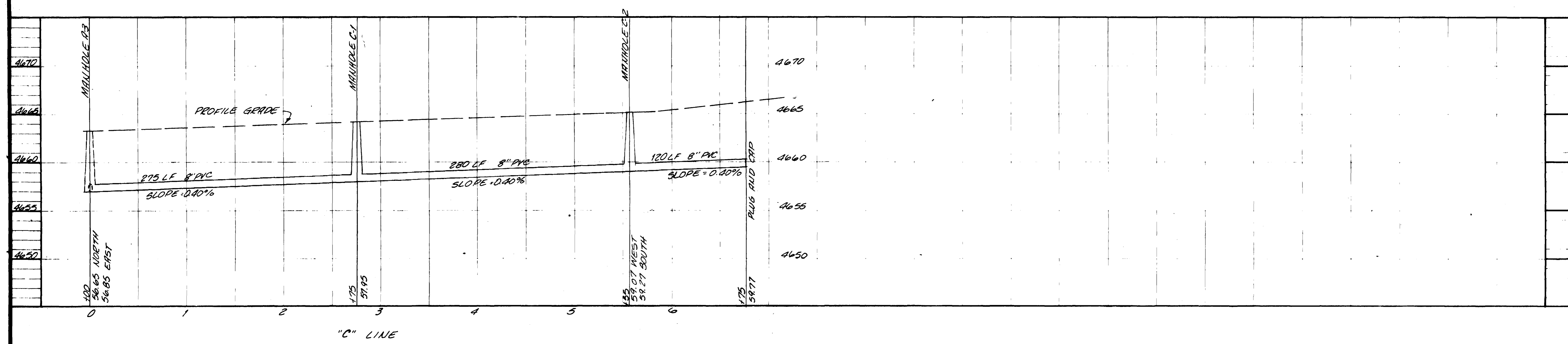
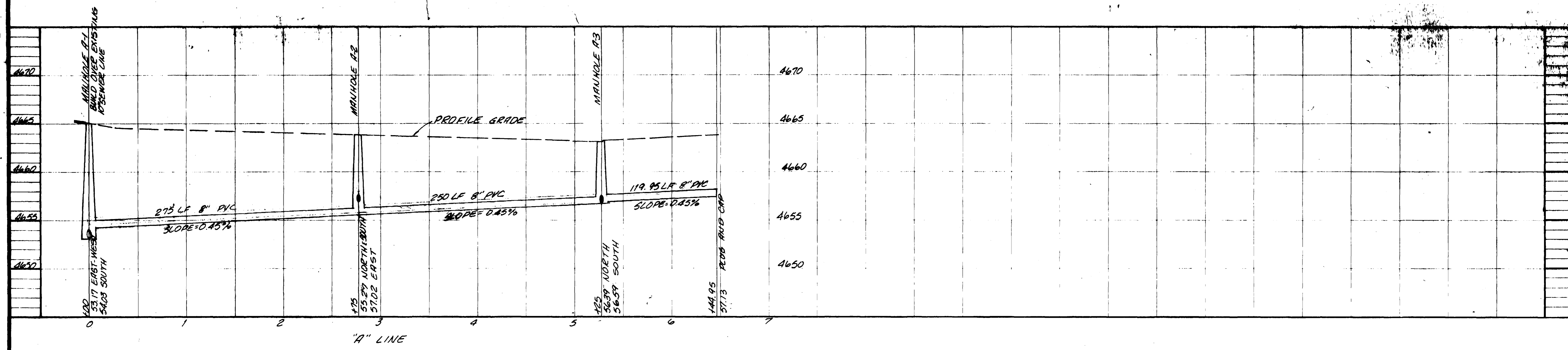
STANDARD SERVICE CONNECTION
No Scale



AS BUILT DRAWINGS

APPROVED _____ DATE _____
ORCHARD MESA SANITATION DISTRICT

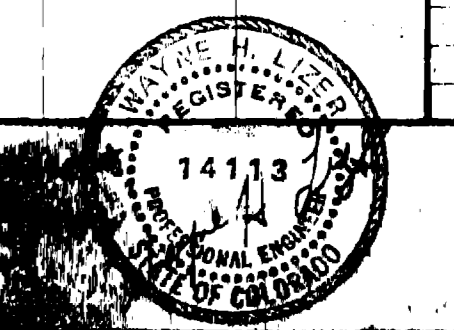
PARAGON ENGINEERING, INC.
 Engineering Consultants
 10 BOX 2872 GRAND JUNCTION COLORADO 81501 PHONE 943-8866
 DATE JULY 1978
 SCALE 1"=50'
 SANITARY SEWER PLAN AND DETAILS
 RIO GRANDE SUBDIVISION
 MESA COUNTY, COLORADO
 SHEET 1 OF 1



NOTE
ON MANHOLES A-2, B1 AND C-1 CONTRACTOR SHALL LAY PIPE CONTINUOUS THROUGH MANHOLE AND CUT TOP OF PIPE OUT AT SPRING LINE, THEN GROUT ACCORDING TO SECTION ON STANDARD MANHOLES ON SHEET ONE.

02014202.tif

AS BUILT



PARAGON ENGINEERING, INC.
Engineering Consultants
DATE: JULY 1978
SCALE: 1" = 5' VERT.
1" = 50' HORIZ.
SANITARY SEWER PROFILE
R10 GRANDE SUBDIVISION
MESA COUNTY, COLORADO