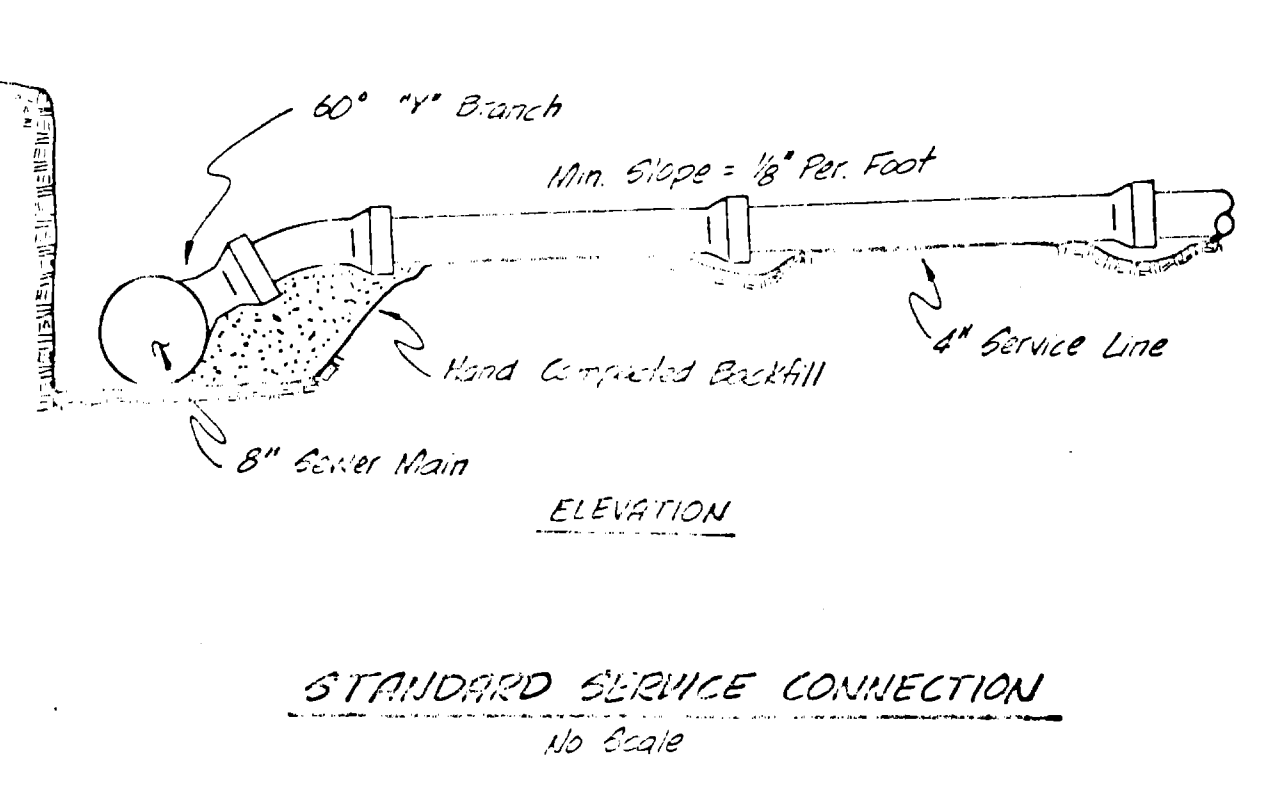
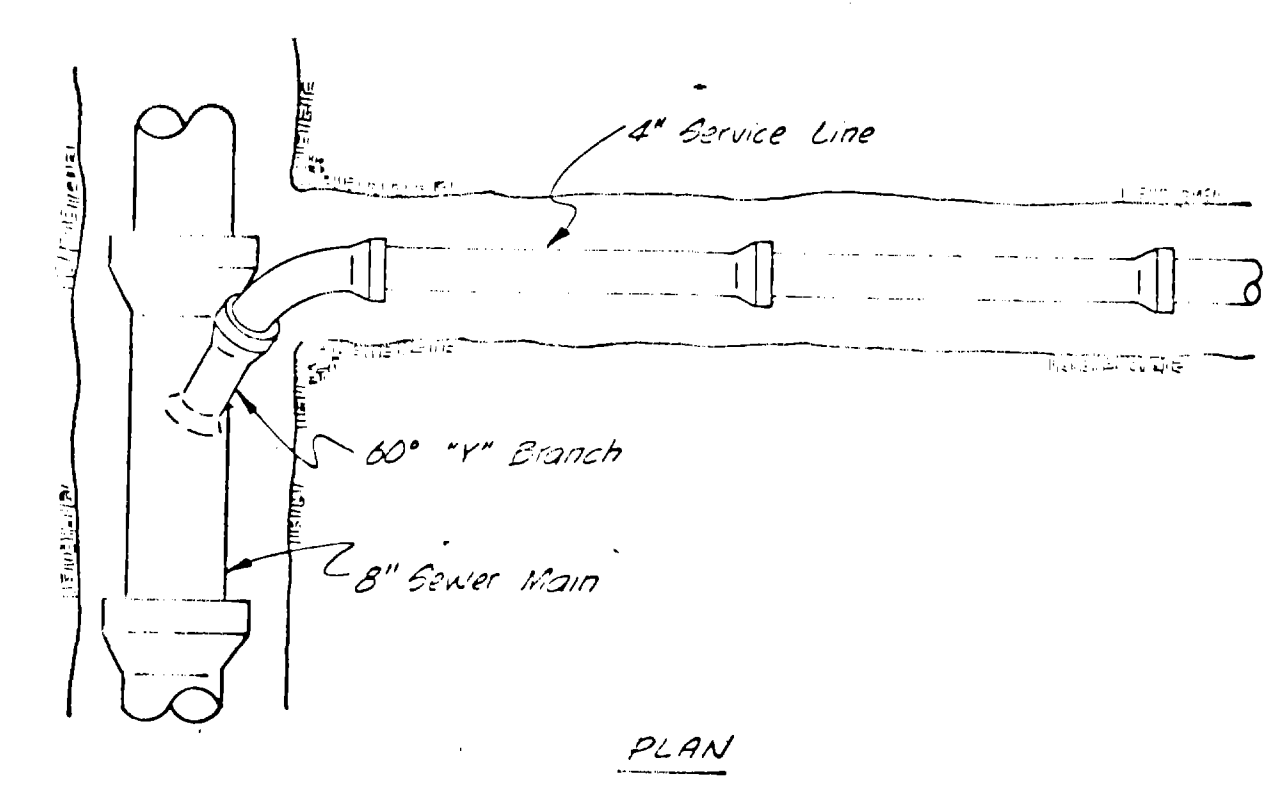


4645	MANHOLE #1 BUILD MH OVER EXISTING 8" SAN. SEWER	FINISHED STREET GRADE	MANHOLE #2	MANHOLE #3	MANHOLE #4	4645
4640						4640
4635		E STORM SEWER = 35.85				4635
4630		203 LF 8" SAN SEWER S=+0.50%	180 LF 8" SAN SEWER S=+0.50%	105 LF 8" SAN S.		4630
4625	400 E 33.65 E-W E 33.85 N		102 34.86 SOUTH 35.06 WEST	182 35.96 E-W	187 36.49	4625
0	1	2	3	4	5	6

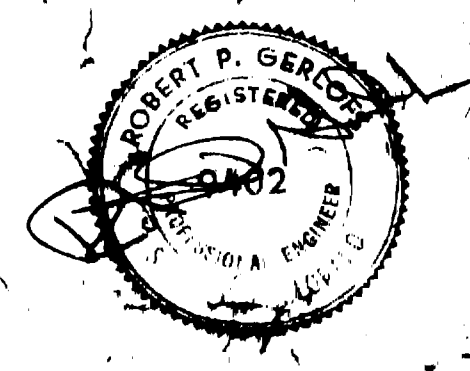


A final inspection determined that infiltration does not exceed 200 gallons per inch diameter per mile of length per day.

**GENERAL NOTES**  
 1. TOP OF ECCENTRIC CONE TO BE SET @ TOP OF SUBGRADE (STREET CONTRACTOR TO SET RIMS TO FINISH GRADE OF STREET.)  
 2. ALL CONSTRUCTION TO BE DONE IN ACCORDANCE WITH THE CENTRAL GRAND VALLEY SANITATION DISTRICT SPECIFICATIONS.

**QUANTITIES**  
 487 LF 8" SANITARY SEWER  
 4 STANDARD MANHOLES  
 15 SERVICE CONNECTION

**AS BUILT DRAWINGS**



APPROVED \_\_\_\_\_ DATE \_\_\_\_\_  
 CENTRAL GRAND VALLEY SANITATION DISTRICT

PARAGON ENGINEERING, INC.  
 SAUTARY SEWER PLAN, PROFILE AND TIE IN  
 FRUITWOOD SUBDIVISION, FILING NO EIGHT  
 CITY OF DENVER, COLORADO