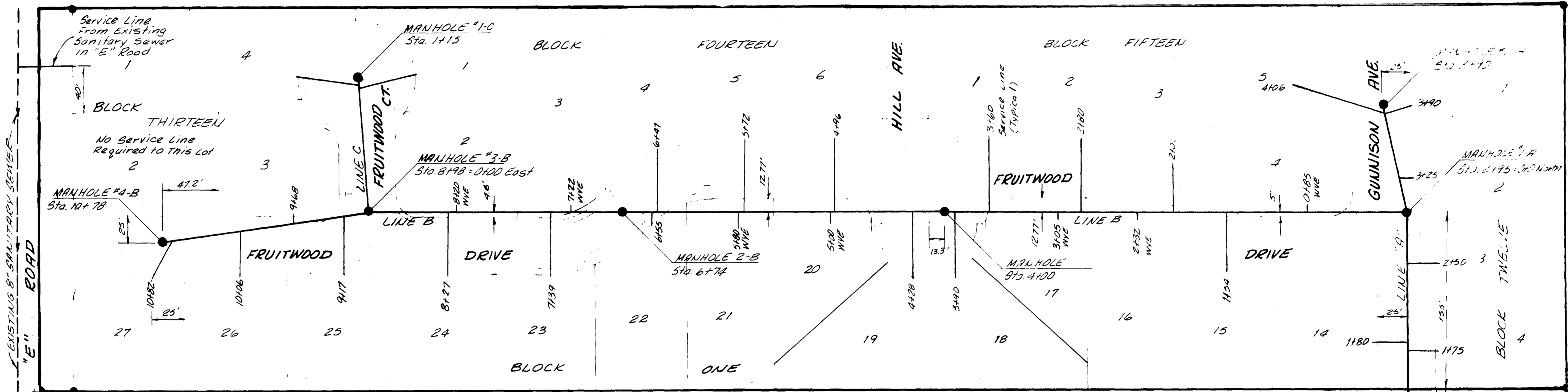


SCALE: 1"=30'



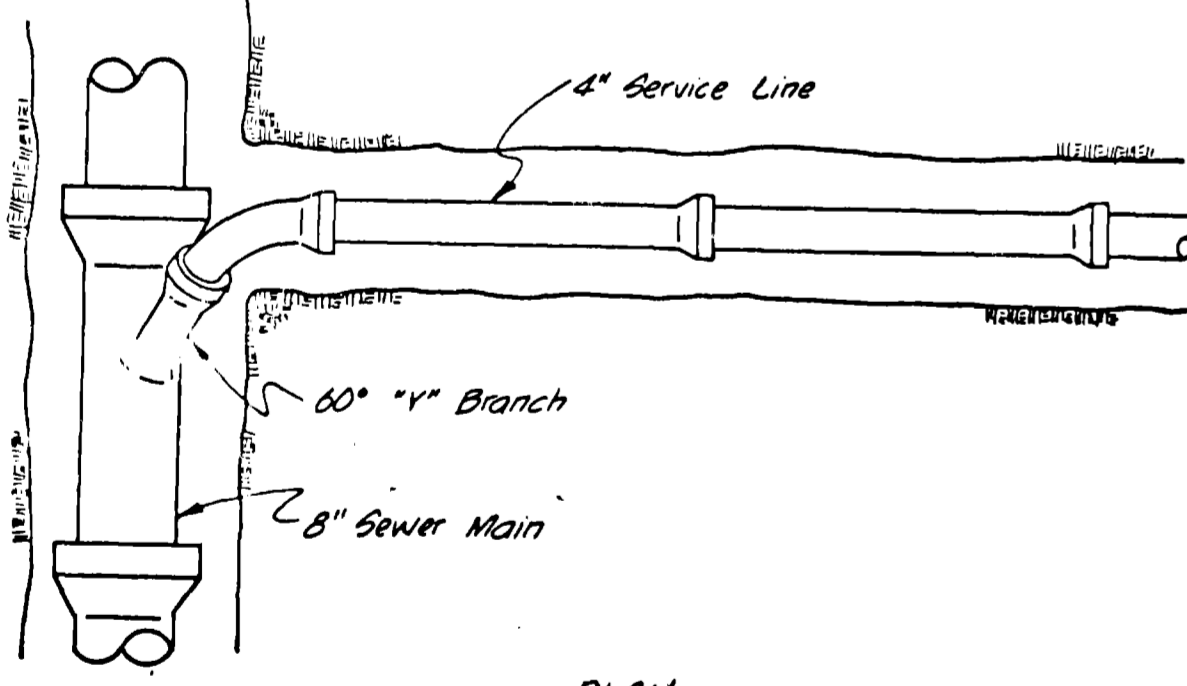
BENCH MARK  
BRASS CAP  
ELEV. 4638.99

BENCH MARK  
TOP OF FIRE HYDRANT  
SE CORNER OF GRAND VALLEY DRIVE  
AND "E" ROAD ELEV. 4659.79

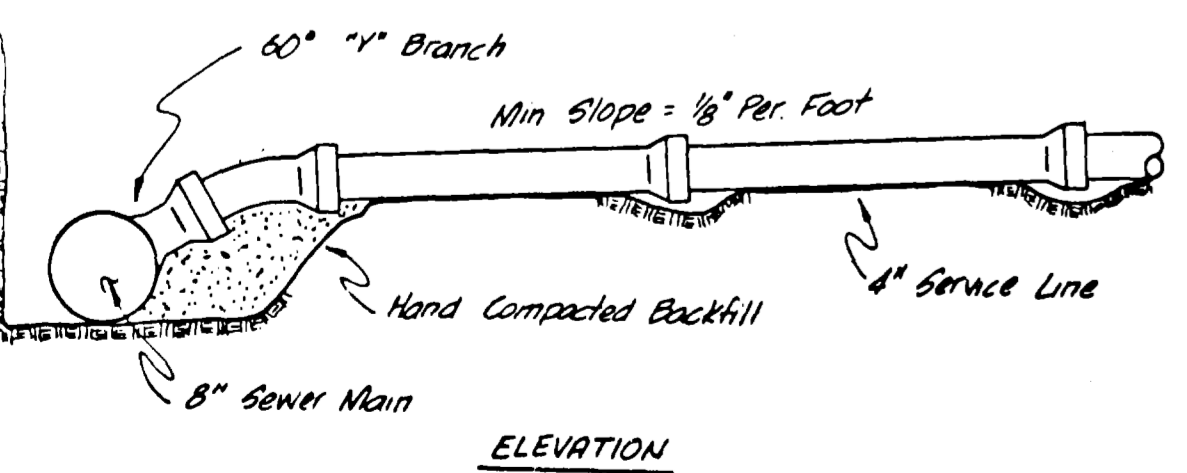
NOTE:  
MH #1-A to be set in curbwalk  
top of Rim Elev. to be established  
when curbwalk is poured.  
Top Rim = 46.81'

D140  
JOIN EXISTING 8" STUB  
ELEVATION - 42.19'

EXISTING MANHOLE #A  
ELEVATION 4642.03

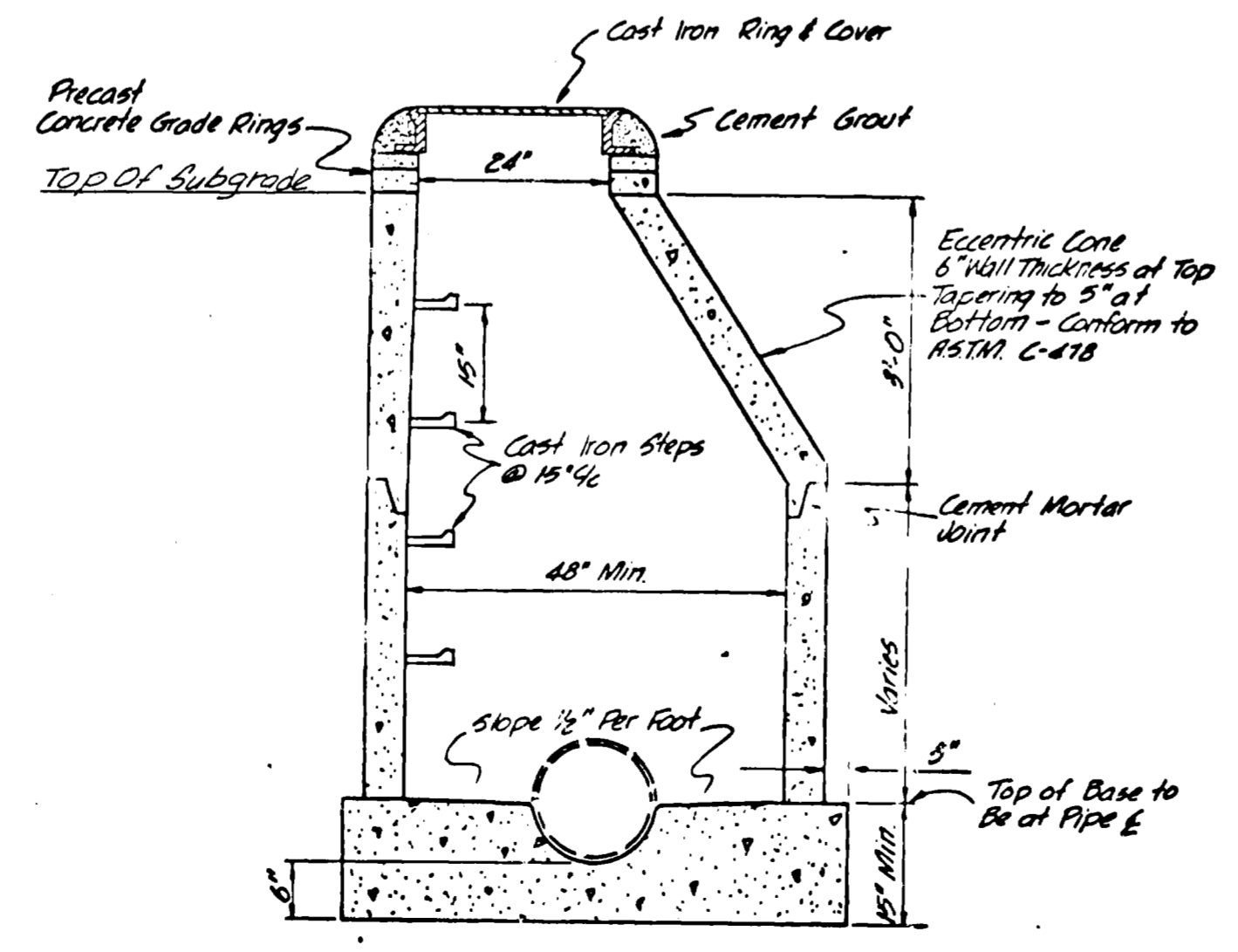


PLAN



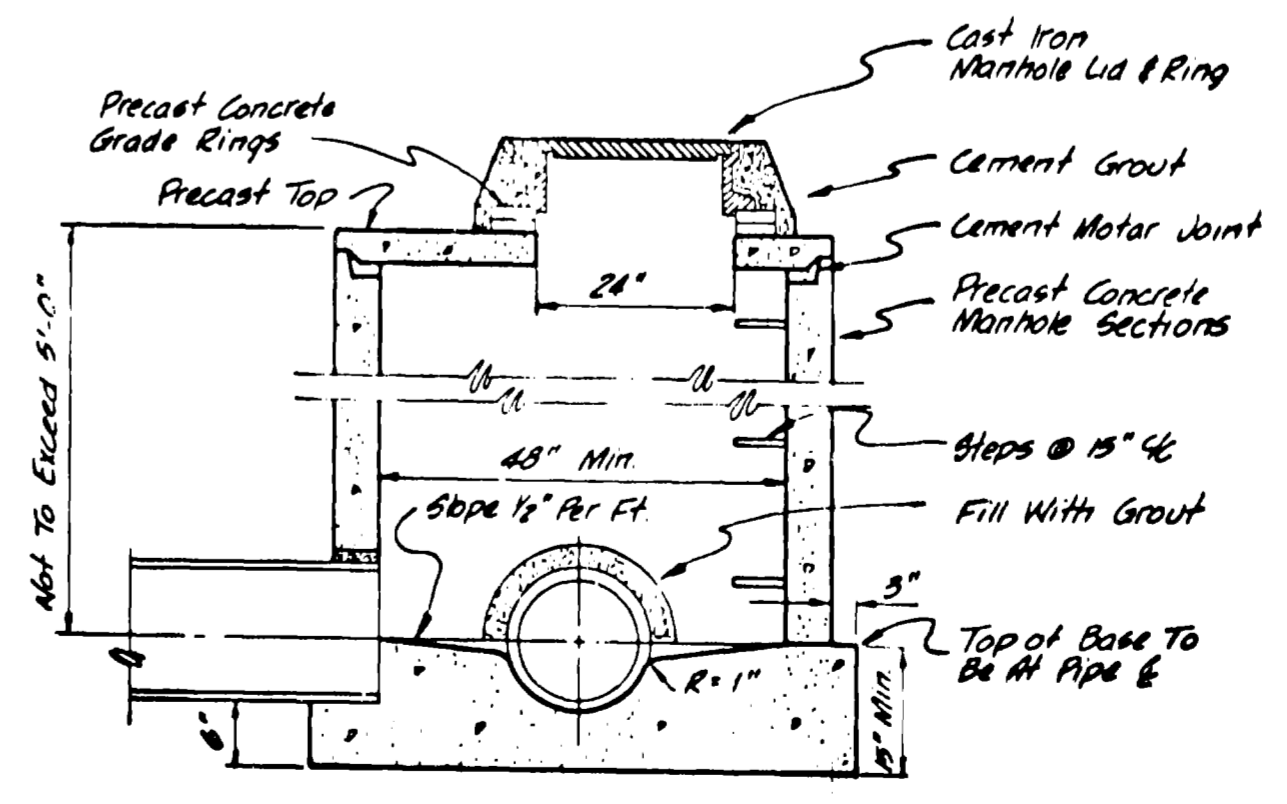
ELEVATION

STANDARD SERVICE CONNECTION  
No Scale



STANDARD MANHOLE  
Scale: 1/8"=1'-0"

A final inspection determined that infiltration does not exceed 200 gallons per inch diameter per mile of length per day.



SHALLOW MANHOLE  
Scale: 1/2"=1'-0"

NOTE: SERVICE LINE LOCATION TO BE  
5' DOWNSTREAM FROM CENTER  
OF LOTS.

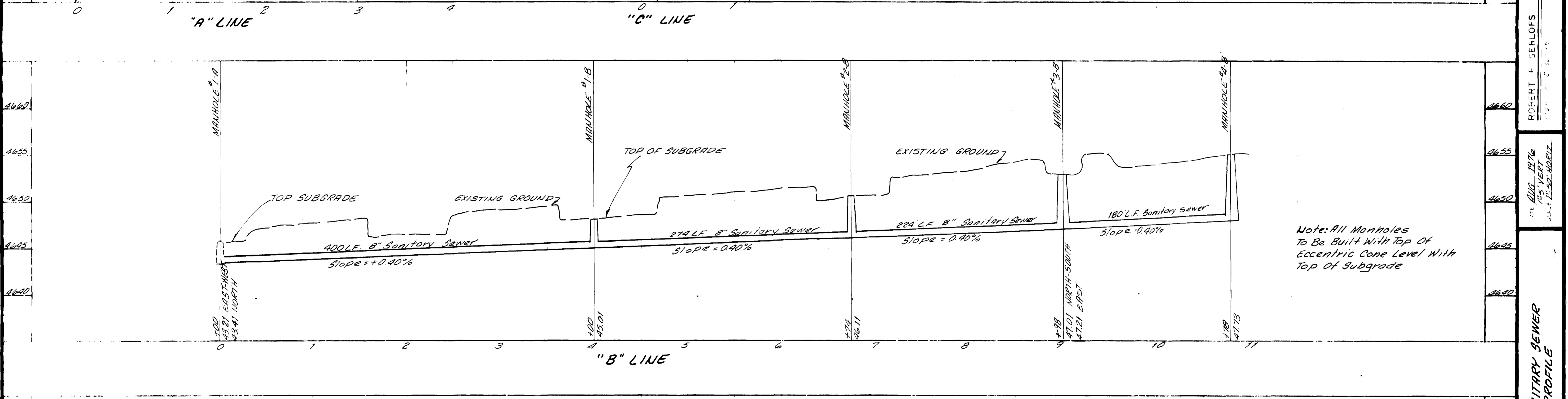
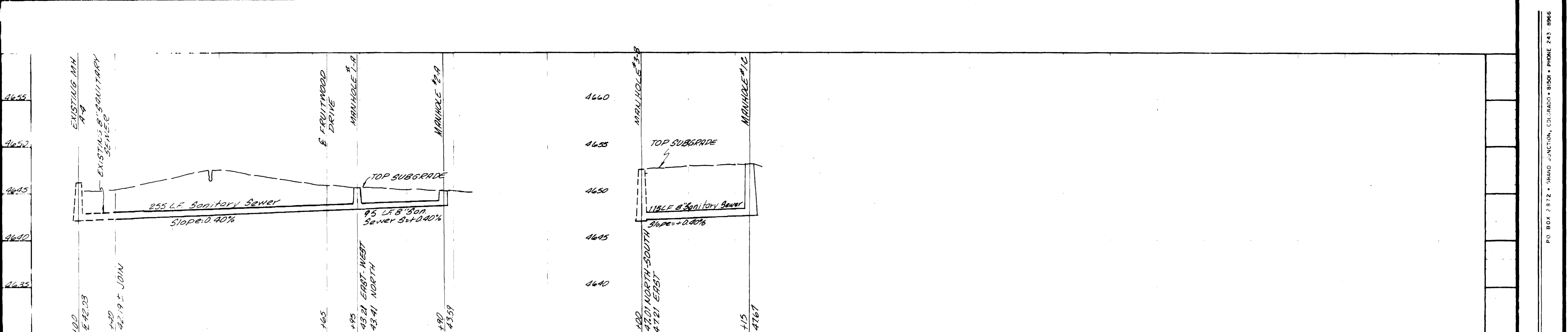
QUANTITIES  
8" SANITARY SEWER = 1542 LIN. FT.  
MANHOLES = 7  
4" SERVICE LINES = 32

APPROVED \_\_\_\_\_ DATE \_\_\_\_\_  
CENTRAL GRAND VALLEY  
SANITATION DISTRICT

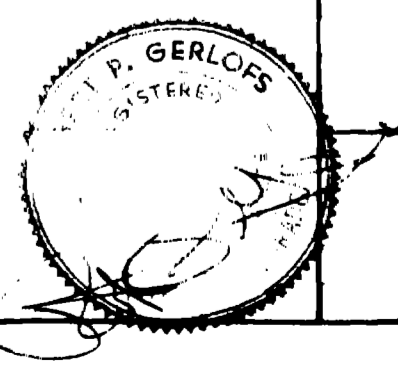
SANITARY SEWER PLAN AND DETAILS

DESIGNED BY S. L. DIMICK  
ILLINOIS AU SEWER  
MESA COUNTY, COLORADO

SHEET  
1  
2



Note: All Manholes To Be Built With Top Of Eccentric Cone Level With Top Of Subgrade



AS BUILT DRAWINGS