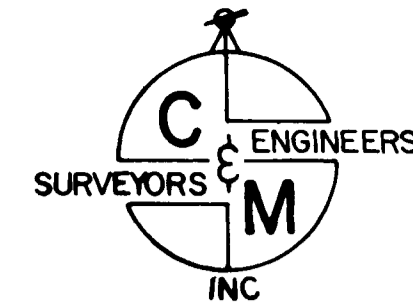


# LODGEPOLE SUBDIVISION

## SEWER SYSTEM



CENTRAL GRAND VALLEY SANITATION DIST



HORIZONTAL SCALE	1 50
VERTICAL SCALE	1 5
ENGINEERING by 7444	R S COBURN
	10 12 1977

APPROVED \_\_\_\_\_ DATE \_\_\_\_\_

*Jack Spake*  
COUNCIL OF GOVERNMENTS

COLORADO DEPT OF HEALTH

BOARD OF COUNTY COMMISSIONERS

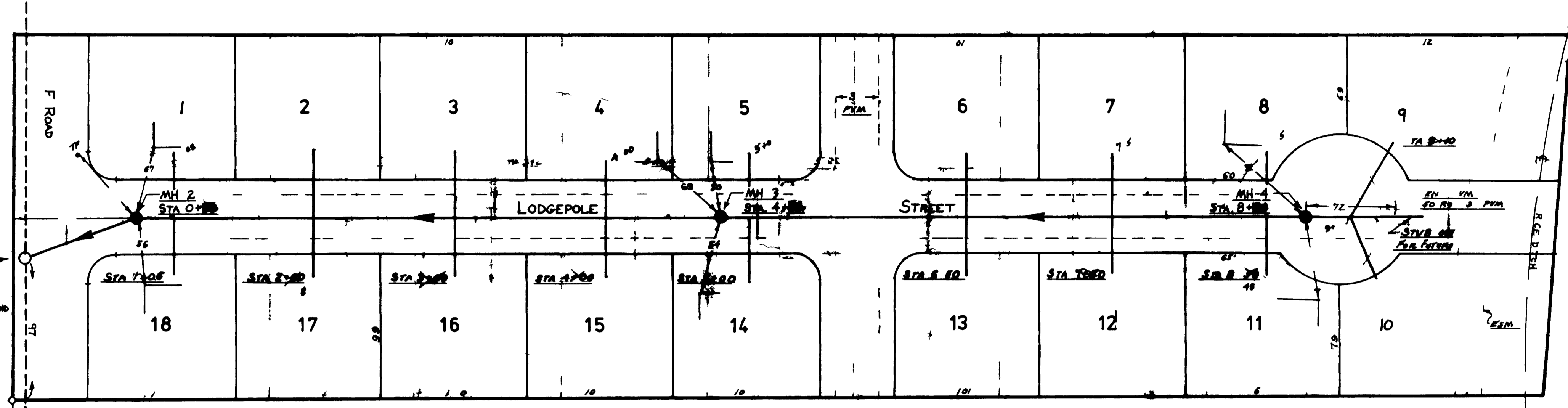
MESA COUNTY PLANNING DEPT

*Harold Hoyer*  
MESA COUNTY HEALTH DEPT

*Robert S. ...*  
CENTRAL GRAND VALLEY SANITATION DIST

OWNER \_\_\_\_\_

**'As-Built Drawing'**



MH 1 EXISTING  
STA 0+00  
THEORET E T INV  
CALC FROM C TR GRAND  
VALLEY SANITATION DIST  
REC 4 0 44

Cor SW 4 SE 5  
Elev 471.40

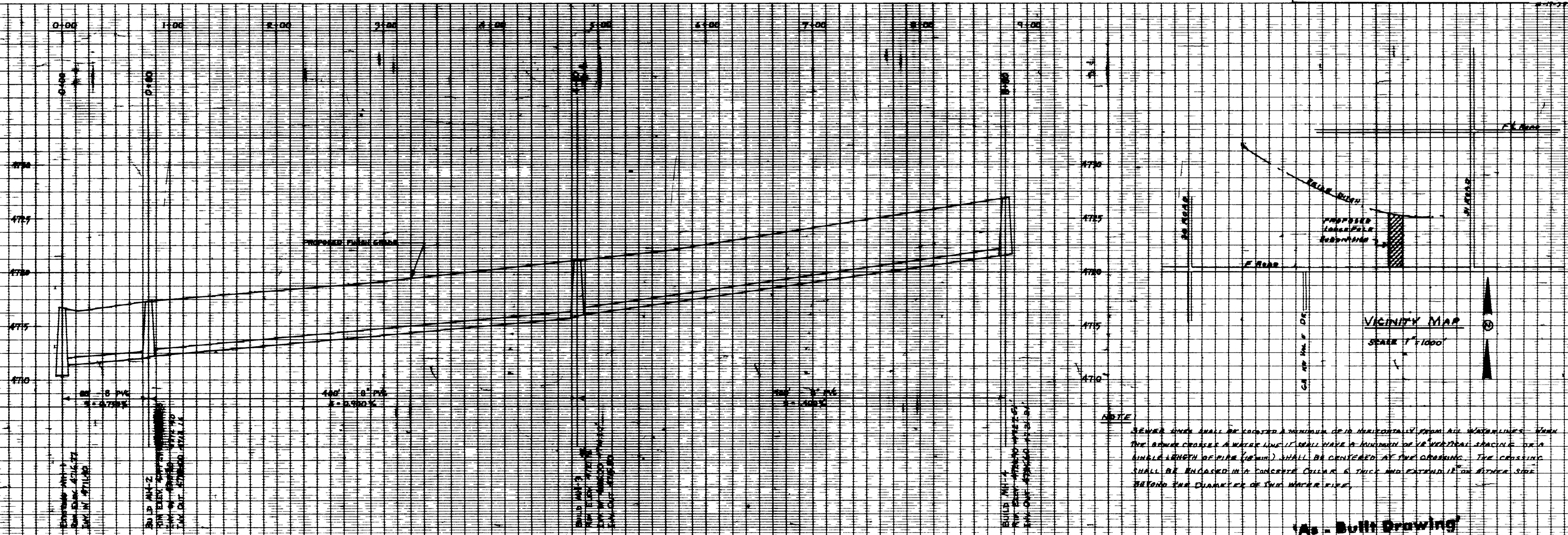
**LEGEND**

- EXISTING MANHOLE
- NEW MANHOLE

**'As-Built Drawing'**

SE Cor Sec 4 T1 R1  
B.M. Elev 471 by G F76 QUAD

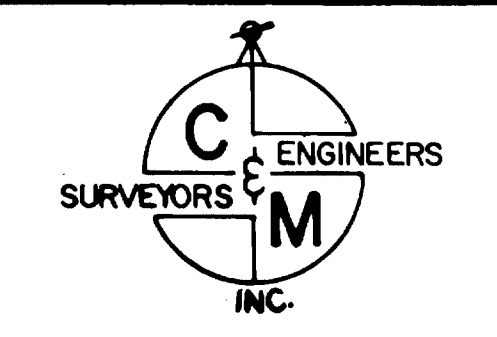
R TU STREETS RE ED C DV  
TS MWD SEWER TAPS RJC



**NOTE**  
SEWER LINES SHALL BE LOCATED A MINIMUM OF 10' HORIZONTALLY FROM ALL WATERLINES. WHEN THE SEWER CROSSES A WATER LINE IT SHALL HAVE A MINIMUM OF 18" VERTICAL SPACING OR A SINGLE LENGTH OF PIPE (8" MIN.) SHALL BE CENTERED AT THE CROSSING. THE CROSSING SHALL BE ENCASED IN A CONCRETE COLLAR 6" THICK AND EXTEND 12" ON EITHER SIDE BEYOND THE DIAMETER OF THE WATER PIPE.

**'As-Built Drawing'**

# LOGEPOLE SUBDIVISION SEWER SYSTEM



HORIZONTAL SCALE	1" = 50'
VERTICAL SCALE	1" = 5'
ENGINEERING BY #7444	R. S. COBURN 10-12-1977

APPROVED \_\_\_\_\_ DATE \_\_\_\_\_

*Jack Thorne*  
COUNCIL OF GOVERNMENTS  
OCT 11 1977

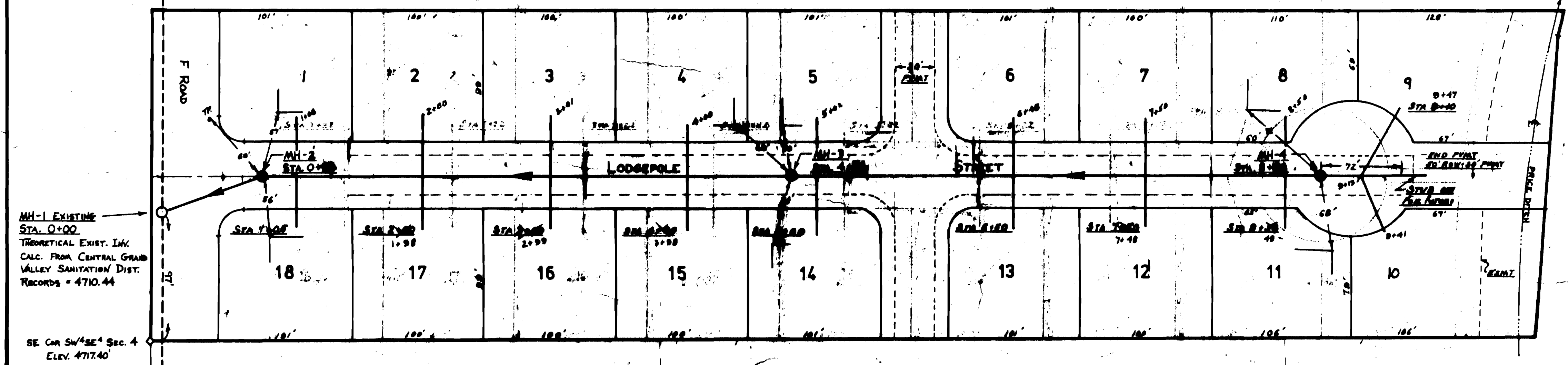
COLORADO DEPT. OF HEALTH

BOARD OF COUNTY COMMISSIONERS

MESA COUNTY PLANNING DEPT.  
*Harold H. Baker*  
MESA COUNTY HEALTH DEPT.

*R. S. Coburn*  
CENTRAL GRAND VALLEY SANITATION DIST. OCT 13 1977

OWNER \_\_\_\_\_



MH-1 EXISTING  
STA. 0+00  
THEORETICAL EXIST. INV.  
CALC. FROM CENTRAL GRAND  
VALLEY SANITATION DIST.  
RECORDS = 4710.44

SE COR. SW 1/4 SEC. 4  
ELEV. 4717.40'

LEGEND:  
○ EXISTING MANHOLE  
● NEW MANHOLE

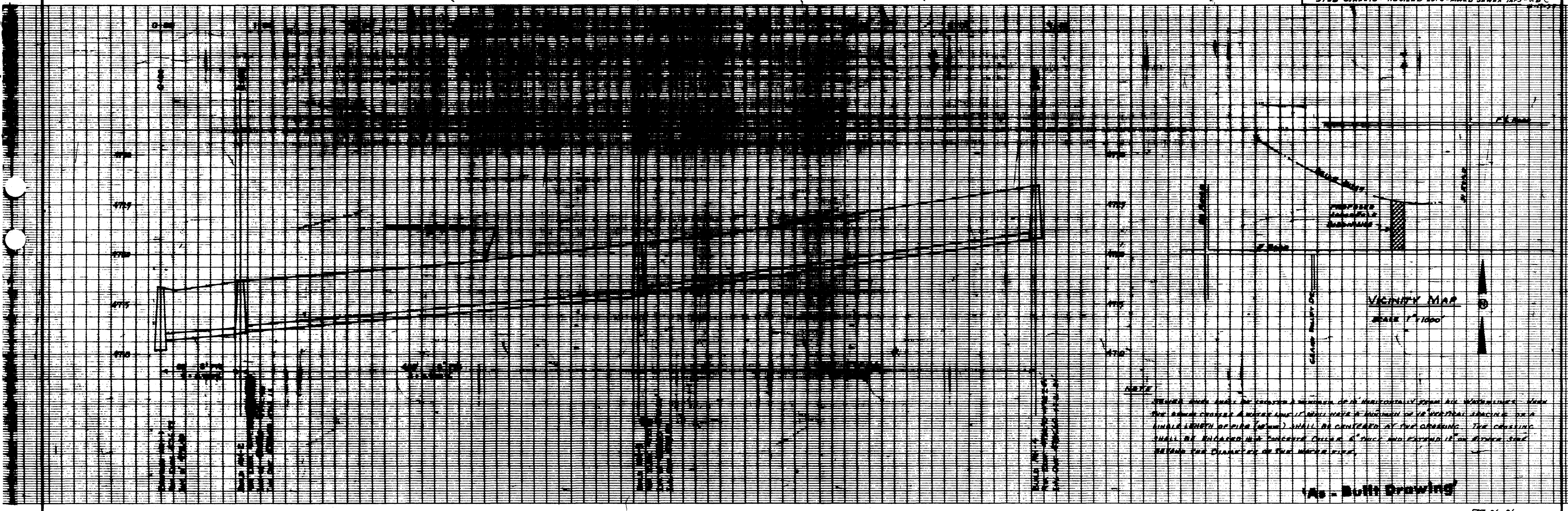
*'As - Built Drawing'*

SE COR. SEC. 4, T1S, R1E, U1A.  
B.M. - ELEV. 4716' by U.S.G.S. CLIPPED QUAD

*'As - Built Drawing'*



REVISED 10-15-77 REPOSITIONED TUL-DW-JAC-AD-44-3  
STUB REPORTS - REVISED LOTS - MOUND SEWER TAPS - RJC



VICINITY MAP  
SCALE 1" = 1000'

NOTE  
MANHOLE RINGS SHALL BE CENTERED & BURNISHED TO THE HORIZONTAL FROM ALL WATERLINES. WHEN  
THE RINGS CROSS A WATER LINE IT SHALL HAVE A RADIUS OF 1/2" VERTICAL SPACING FOR A  
LENGTH OF 2' (MIN.) SHALL BE CENTERED AT THE CROSSING. THE CROSSING  
SHALL BE BRICKED AND CONCRETE COVERED 6" THICK AND EXTEND 12" ON EITHER SIDE  
BEYOND THE CHANNELS OF THE WATER PIPE.

*'As - Built Drawing'*

77-06-06

02-967

DRAWING NUMBER  
02-154  
PLAN HOLD CORPORATION - IRVINE, CALIFORNIA  
RECORDING NUMBER 07584  
DATE OF RECORDING 10-12-1977

DRAWING NUMBER  
02-154  
PLAN HOLD CORPORATION - IRVINE, CALIFORNIA  
RECORDING NUMBER 07584  
DATE OF RECORDING 10-12-1977

DRAWING NUMBER  
02-154  
PLAN HOLD CORPORATION - IRVINE, CALIFORNIA  
RECORDING NUMBER 07584  
DATE OF RECORDING 10-12-1977

DRAWING NUMBER  
02-154  
PLAN HOLD CORPORATION - IRVINE, CALIFORNIA  
RECORDING NUMBER 07584  
DATE OF RECORDING 10-12-1977