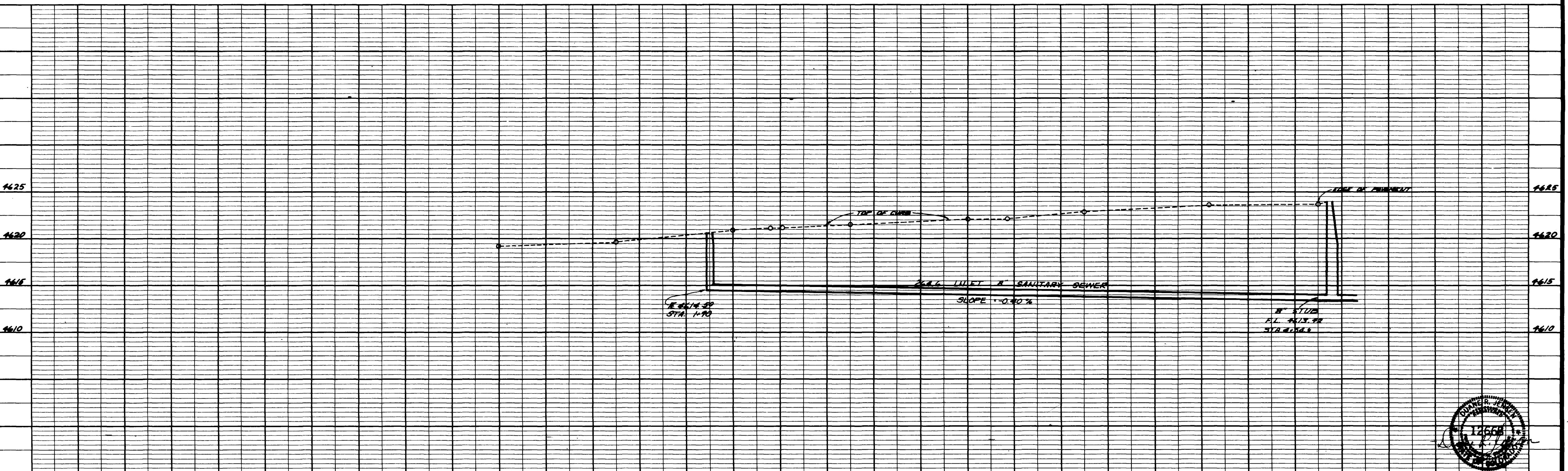
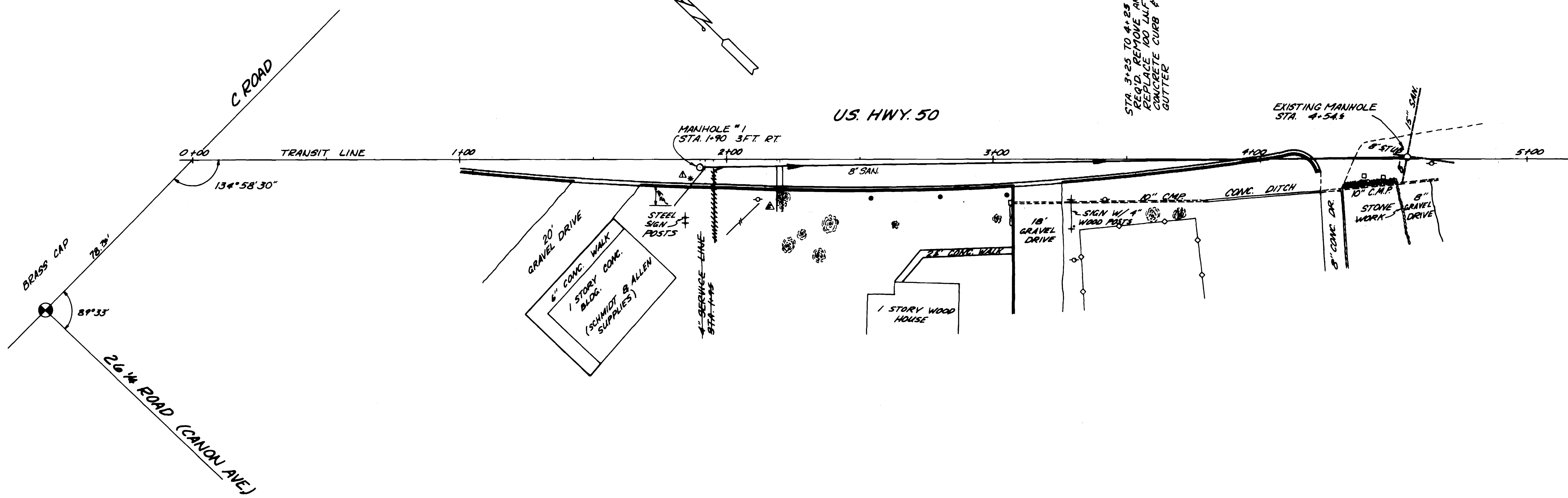


△ \*Tap on Main 2' East of M.H.  
 End of tap line APPROX.  
 6.5' S. of Curb and 11.8' W.  
 of Tap on Main (In line  
 W/S. Edge of N. Window  
 East side of BLDG.)

△ 2 Taps on Main 30' East of M.H.  
 South End of taps APPROX.  
 8' S. of Curb Face  
 (Sta. 2+20, 20' RT.)

STA. 3+25 TO 4+25  
 REPAIR, REMOVE AND  
 REINSTALL 100' LIFT  
 CONCRETE CURB &  
 GUTTER

EXISTING MANHOLE  
 STA. 4+54.8



DESCRIPTION	DATE	DRAWN BY	DATE	SCALE
REVISION △ Tap Location AS BUILT (CLO)	8-16-77	ALG	12-7-77	PLAN 1"=20'
REVISION △ Two Taps AS PER Note	8-16-77			PROFILE 1"=5'
REVISION △				
REVISION △				

DEPARTMENT OF PUBLIC WORKS AND UTILITIES  
 ENGINEERING DIVISION  
 CITY OF GRAND JUNCTION, COLORADO

UNAWEEP AVENUE & U.S. HIGHWAY 50  
 SANITARY SEWER PLANS  
 SHEET NO. 1  
 OF 2  
 FILE NO. 02-974