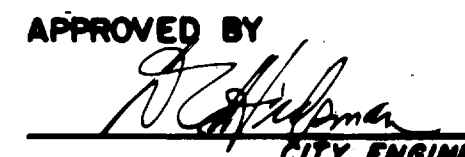


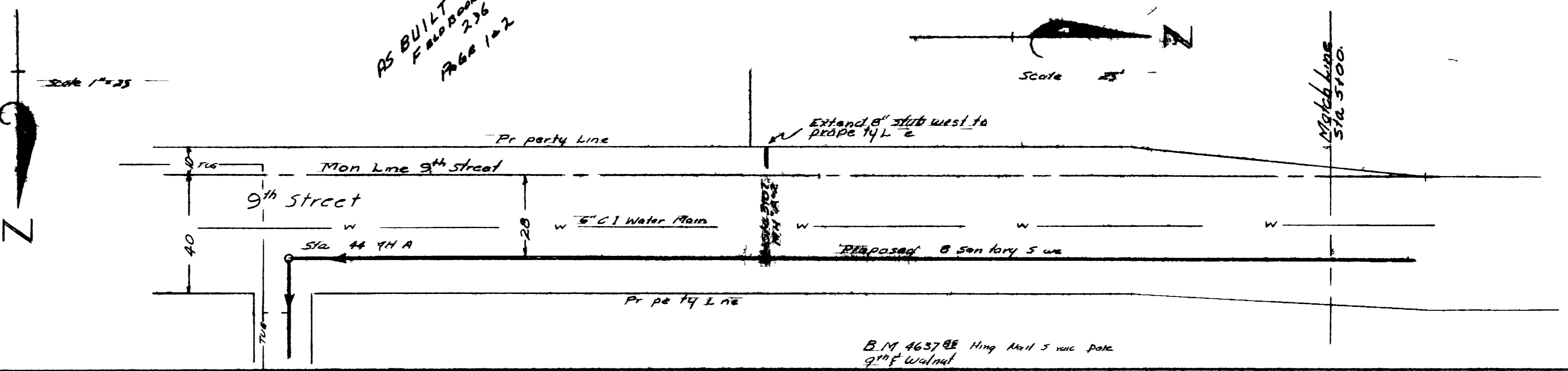
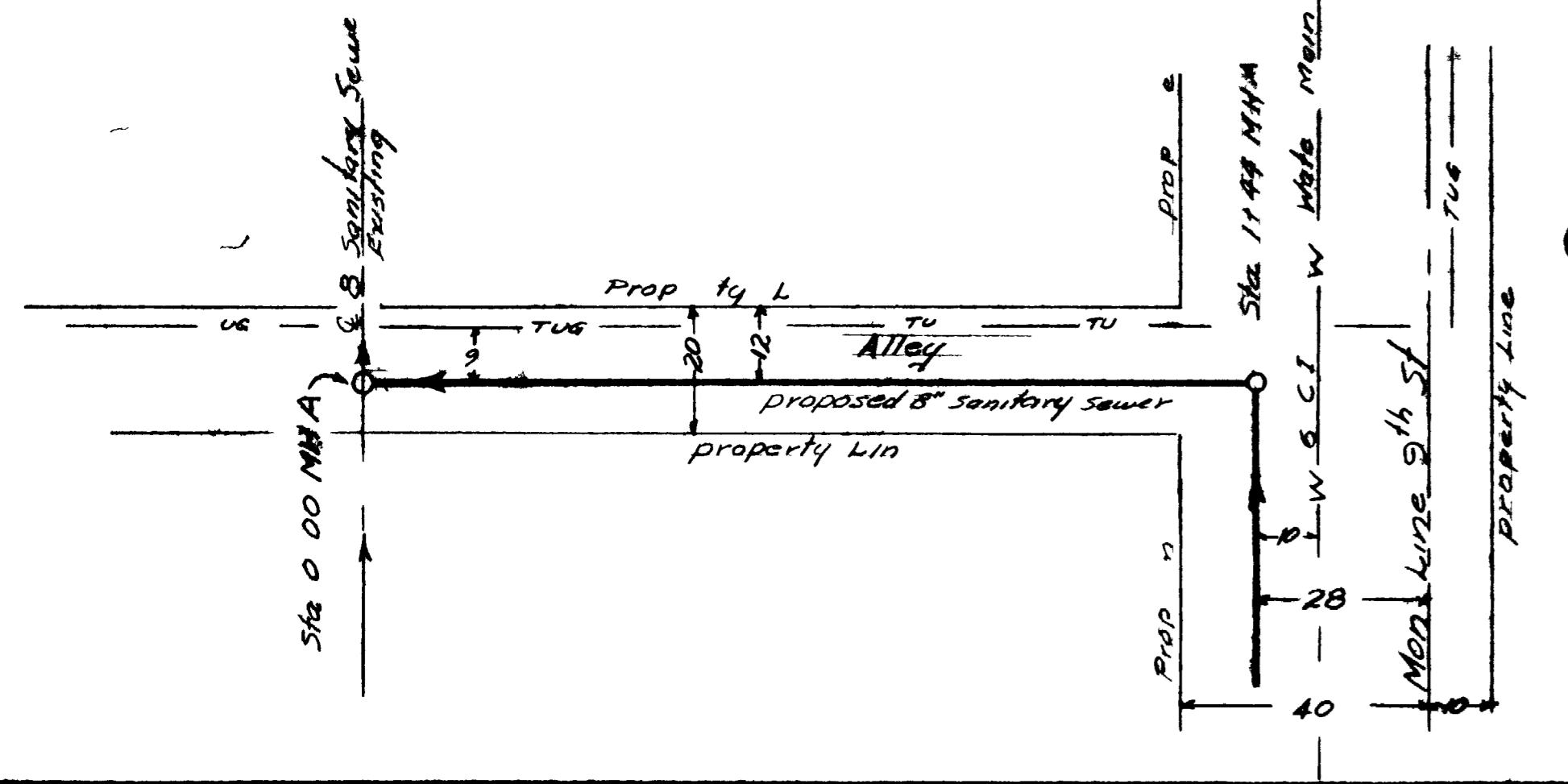
INDEX

JOB NO. 1	SHEET NO. 1	NINTH STREET WALNUT TO BOOKCLIFF
JOB NO. 2	SHEET NO. 2	THIRTEENTH STREET AT BOOKCLIFF TO NORTH SIDE OF GRAND VALLEY CANAL
JOB NO. 3	SHEET NO. 3	SEWER RECONSTRUCTION IN ALLEY BUNTING TO KENNEDY EAST OF 25th. ST.
DETAILS	SHEET NO. 4	

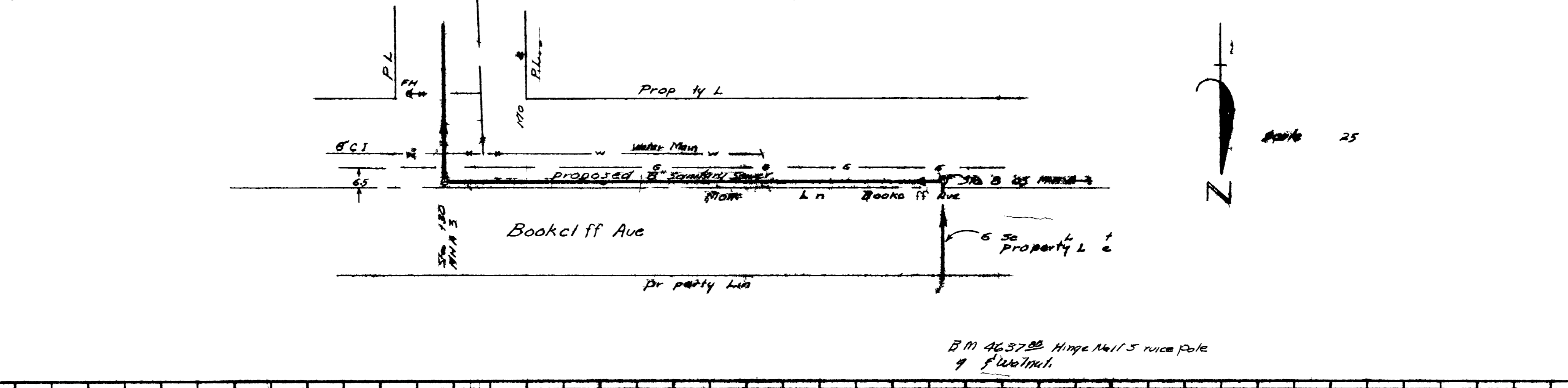
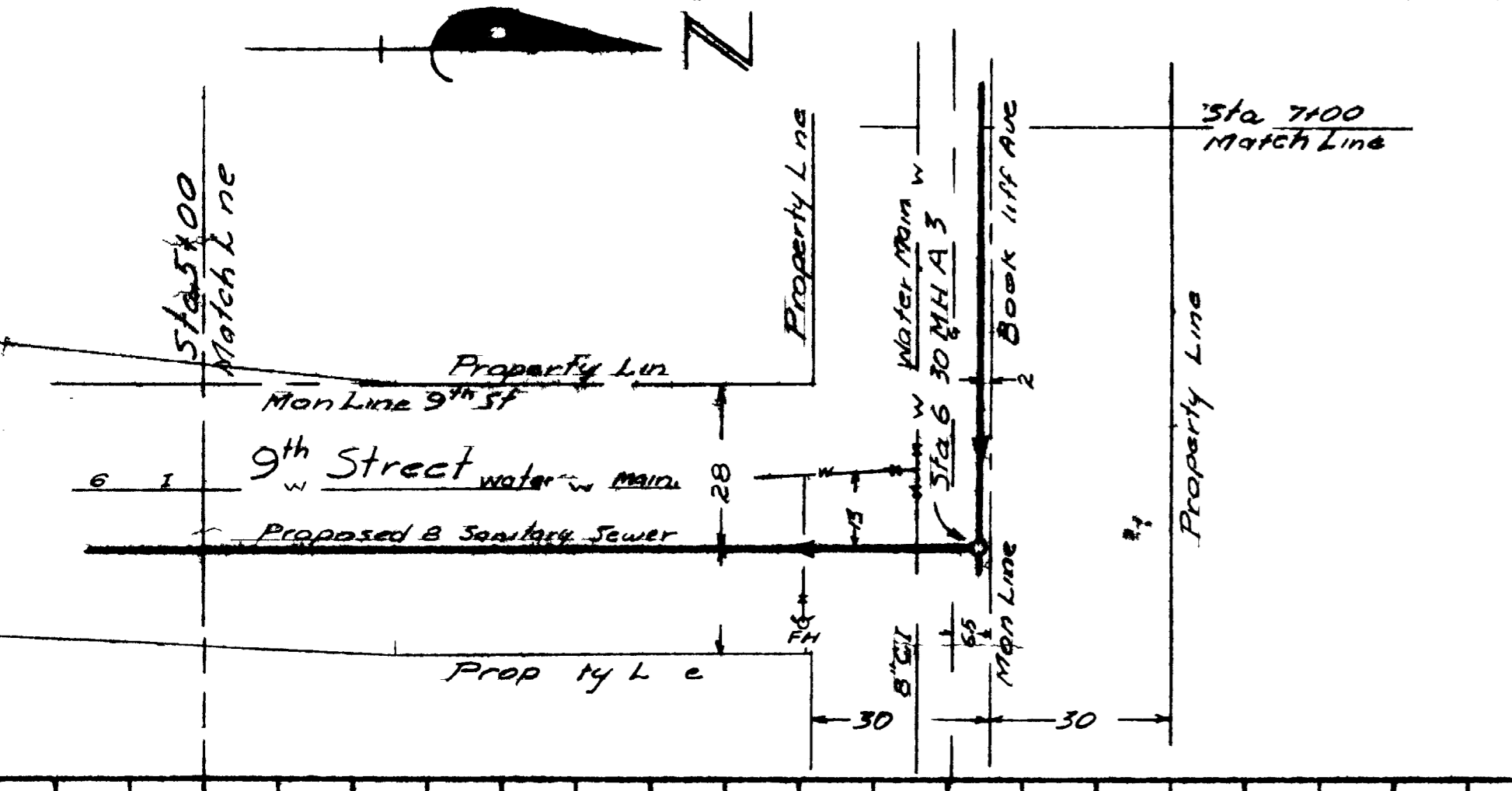
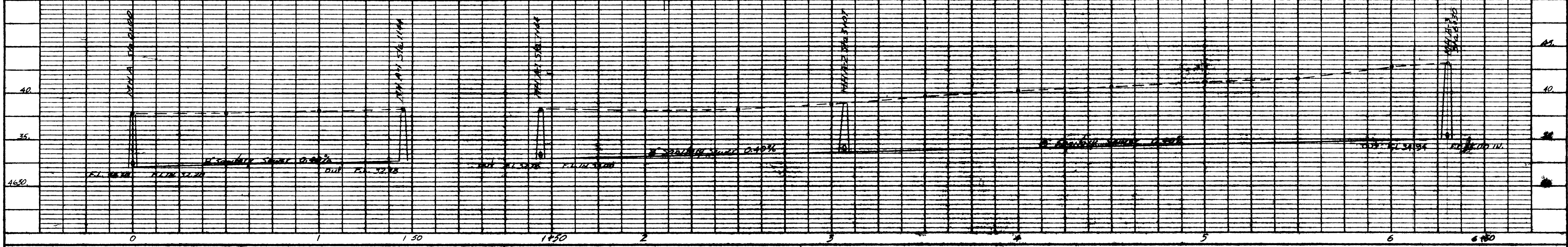
**CITY OF GRAND JUNCTION COLORADO
SANITARY SEWER IMPROVEMENTS
1972**

Budget estimate to 082,961-902

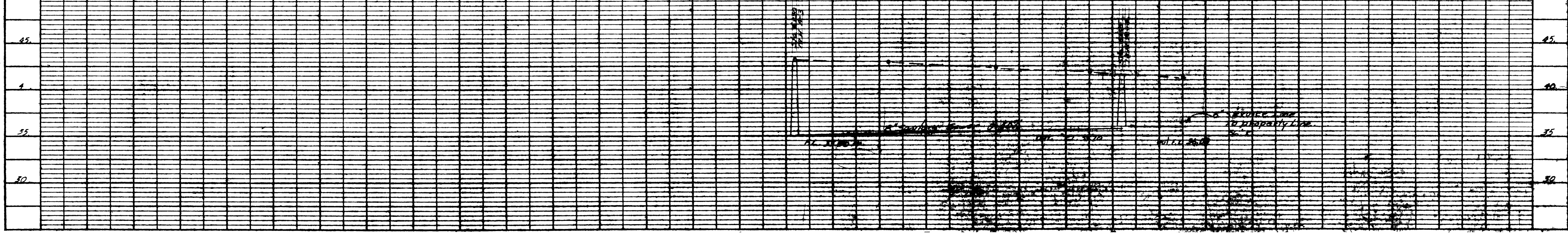
ENGINEERING DEPARTMENT CITY OF GRAND JUNCTION SANITARY SEWER IMPROVEMENTS 1972	
DRWN. BY <u>E.A.W.</u> DATE <u>DEC. 1971</u> SCALE: <u>AS SHOWN</u>	APPROVED BY  CITY ENGINEER



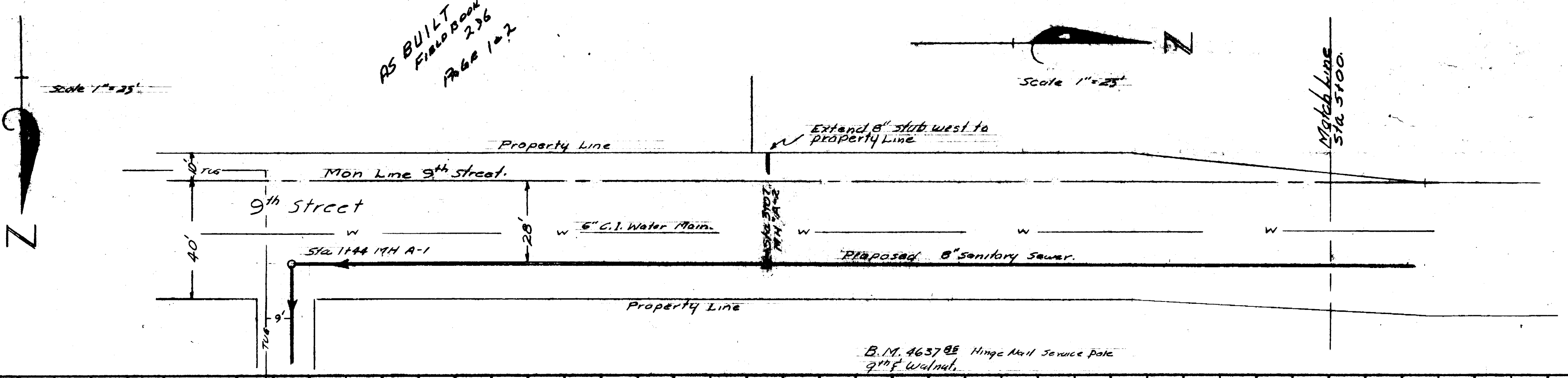
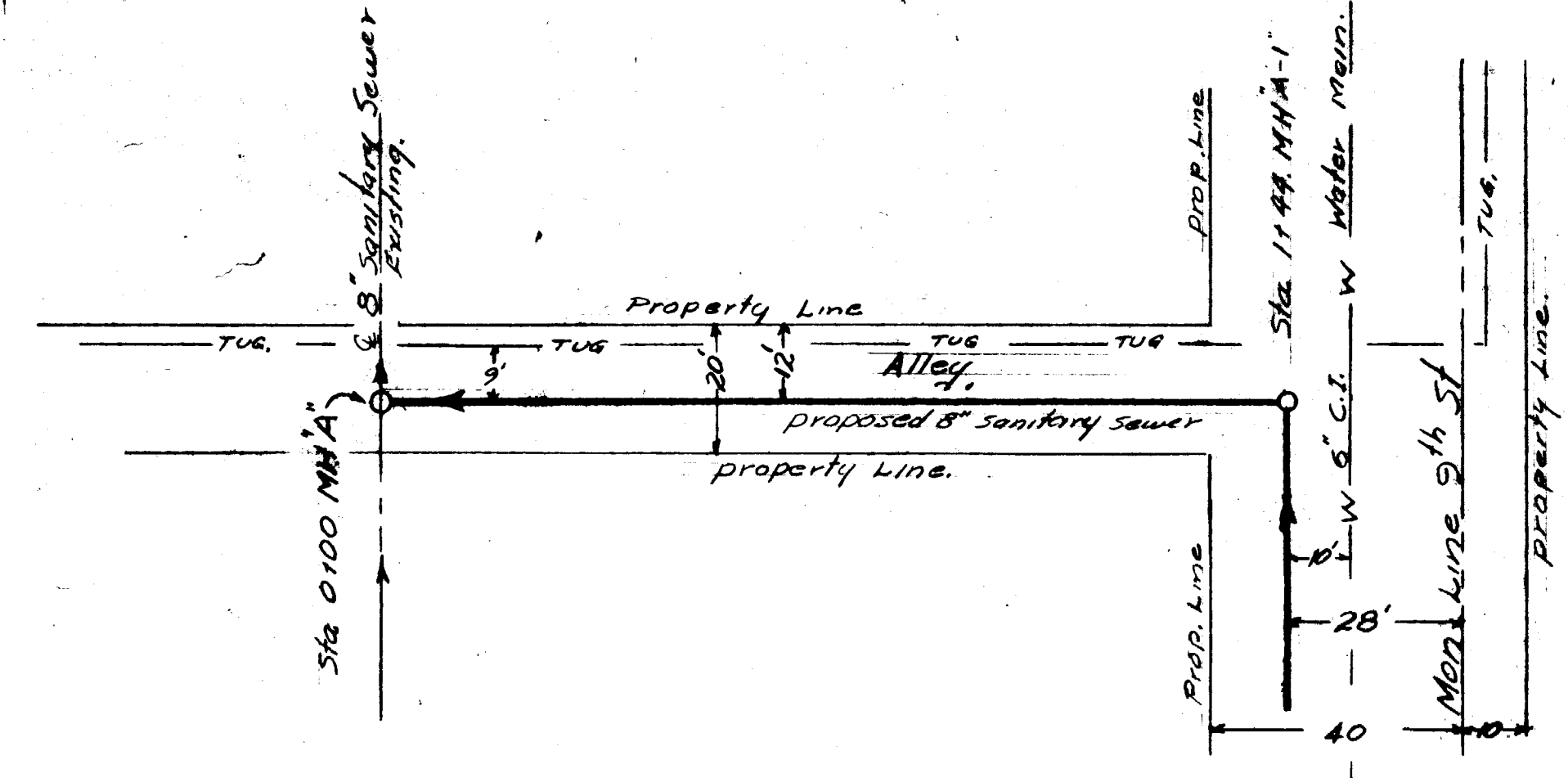
AS BUILT
FIELD BOOK
236
Page 1-2



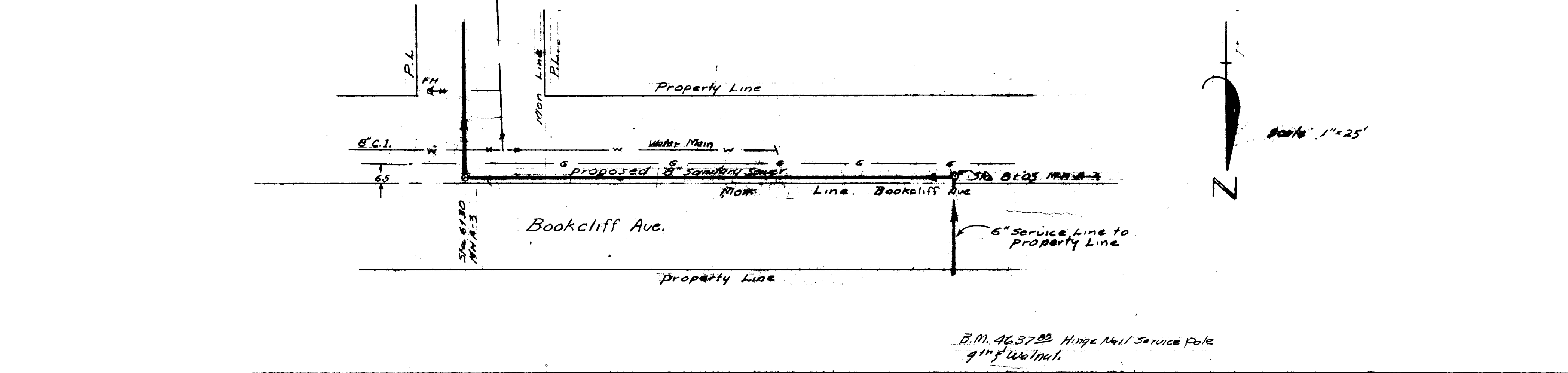
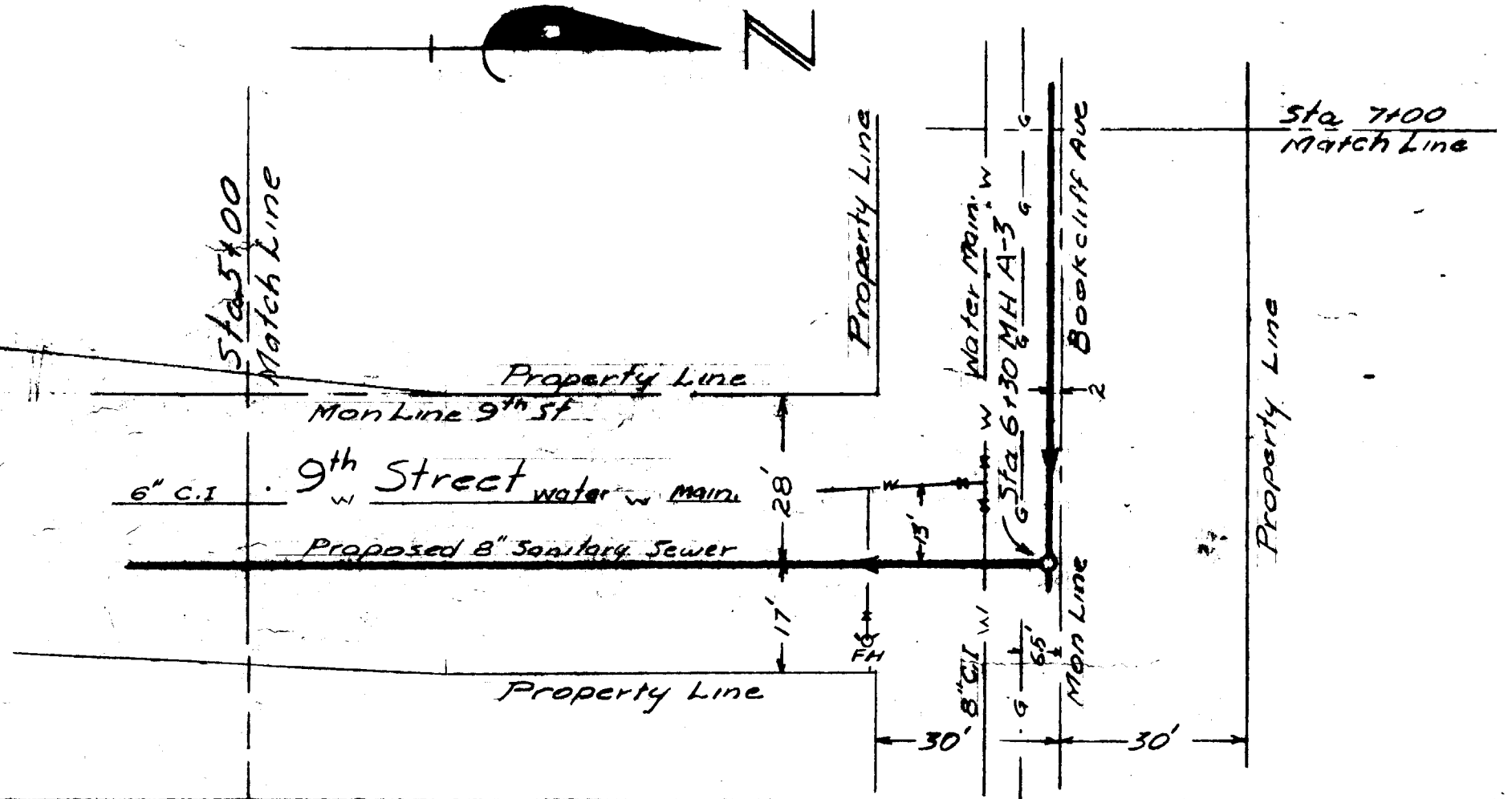
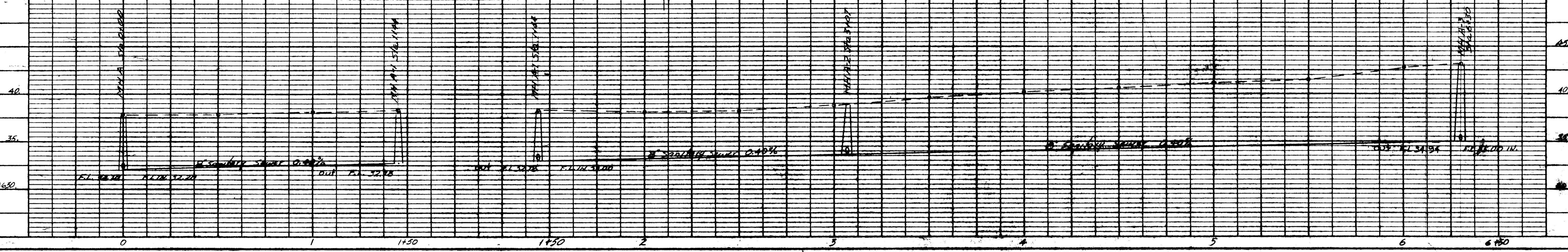
B.M. 4637 BE Hinge Nail 5 rice Pole
9' Walnut



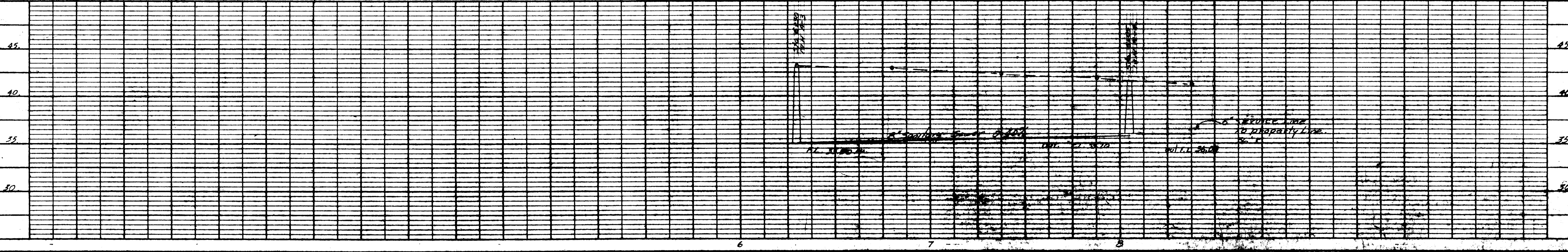
AS BUILT
FIELD BOOK
236
Page 1-2

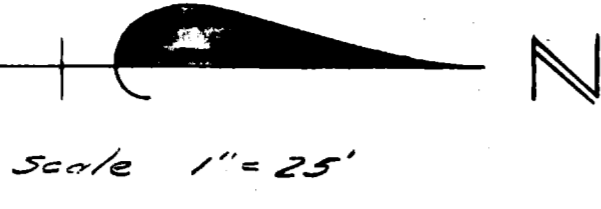


B.M. 4637⁸⁸ Hinge Nail Service Pole
9th Walnut

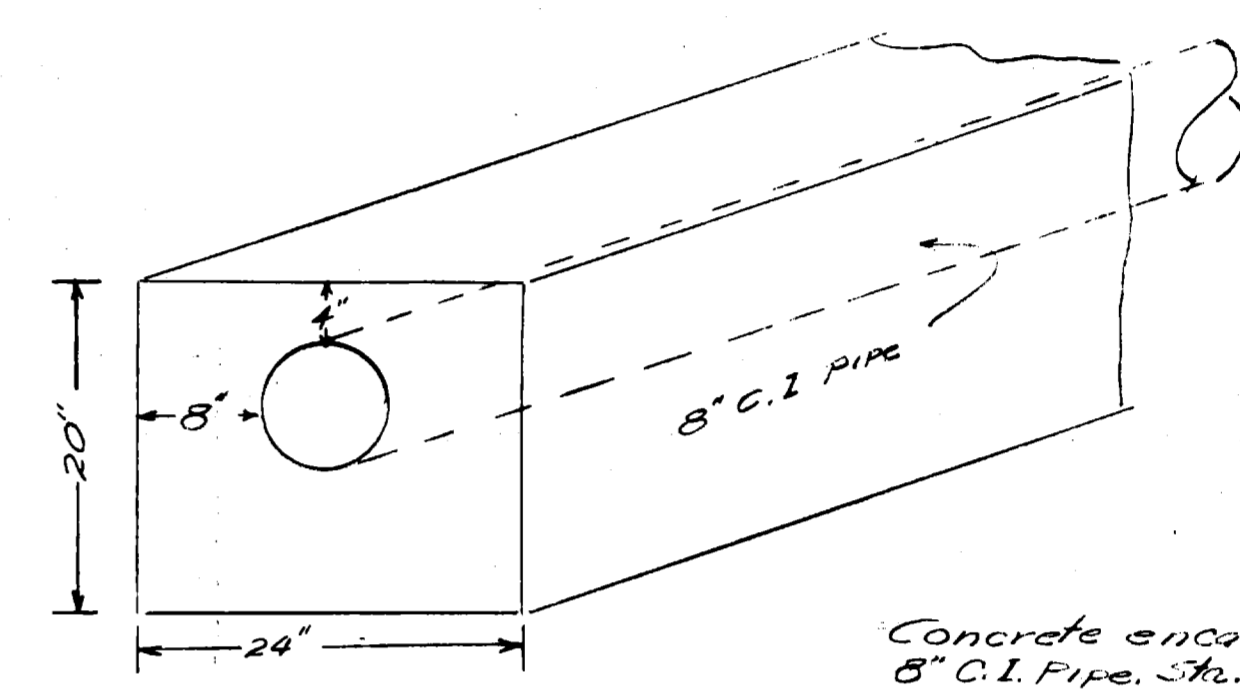
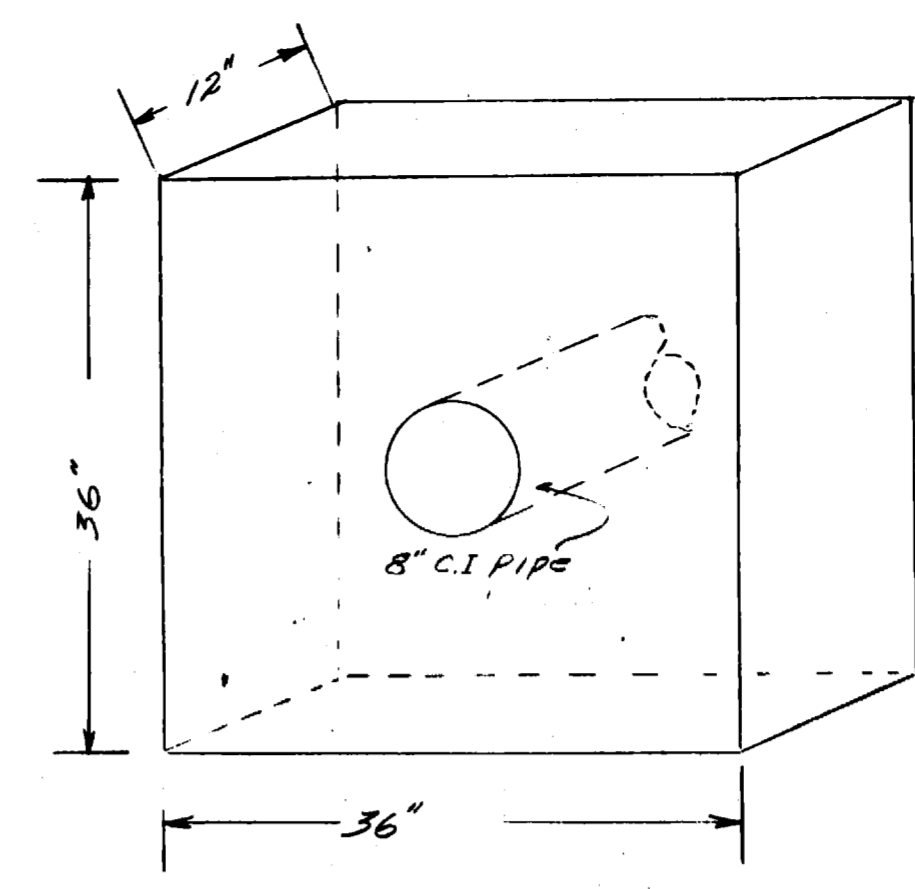


B.M. 4637⁸⁸ Hinge Nail Service Pole
9th Walnut

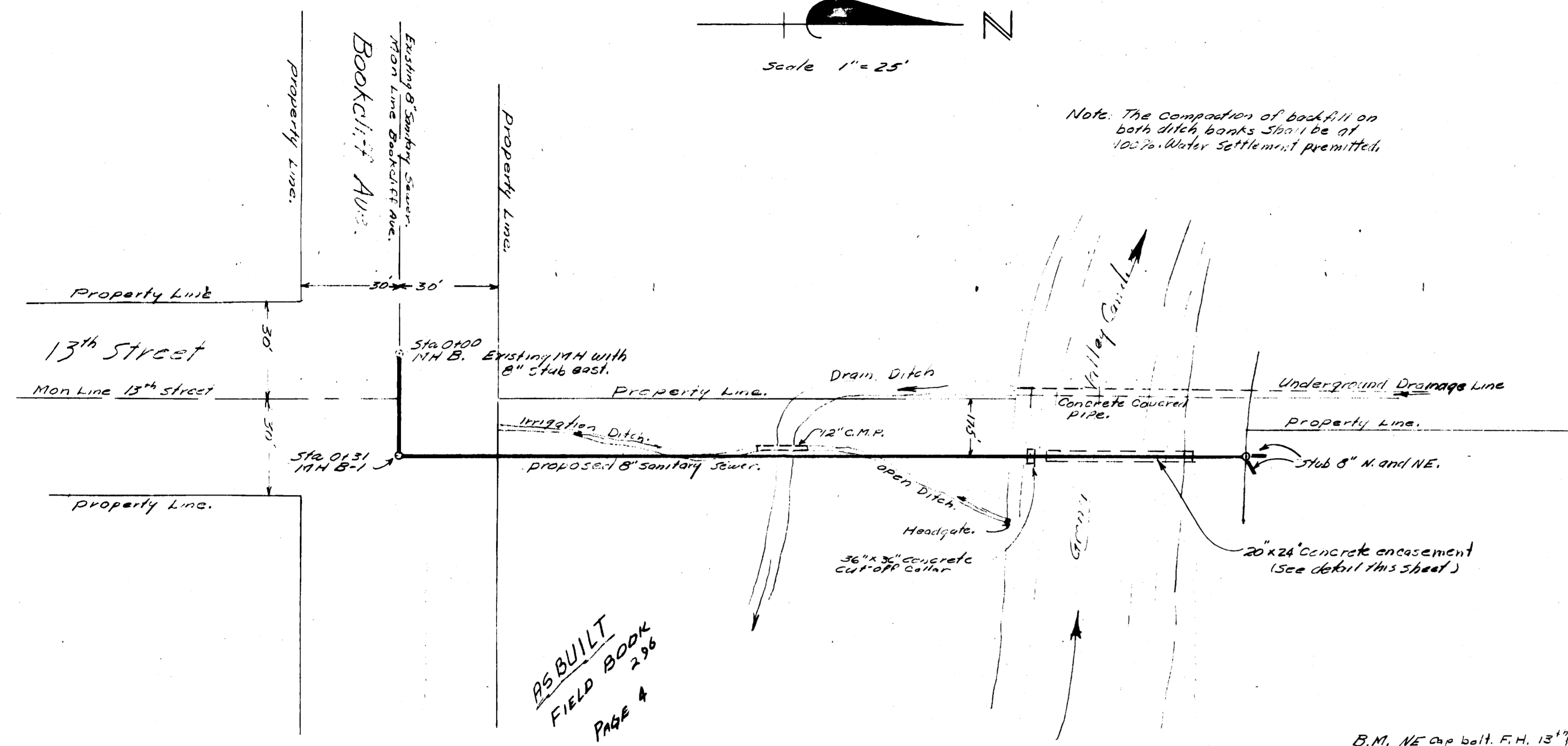




Concrete Cut-off Collar.
Install around 8" C.I. Pipe Sta 2125.



Note: The composition of backfill on both ditch banks shall be at 100% Water Settlement permitted.



AS BUILT
FIELD BOOK
PAGE 4

B.M. NE Cap bolt. F.H. 13" Bookcliff
55



JOB NO.2 SHEET NO 2

02015702.tif

VAULT 1-A

