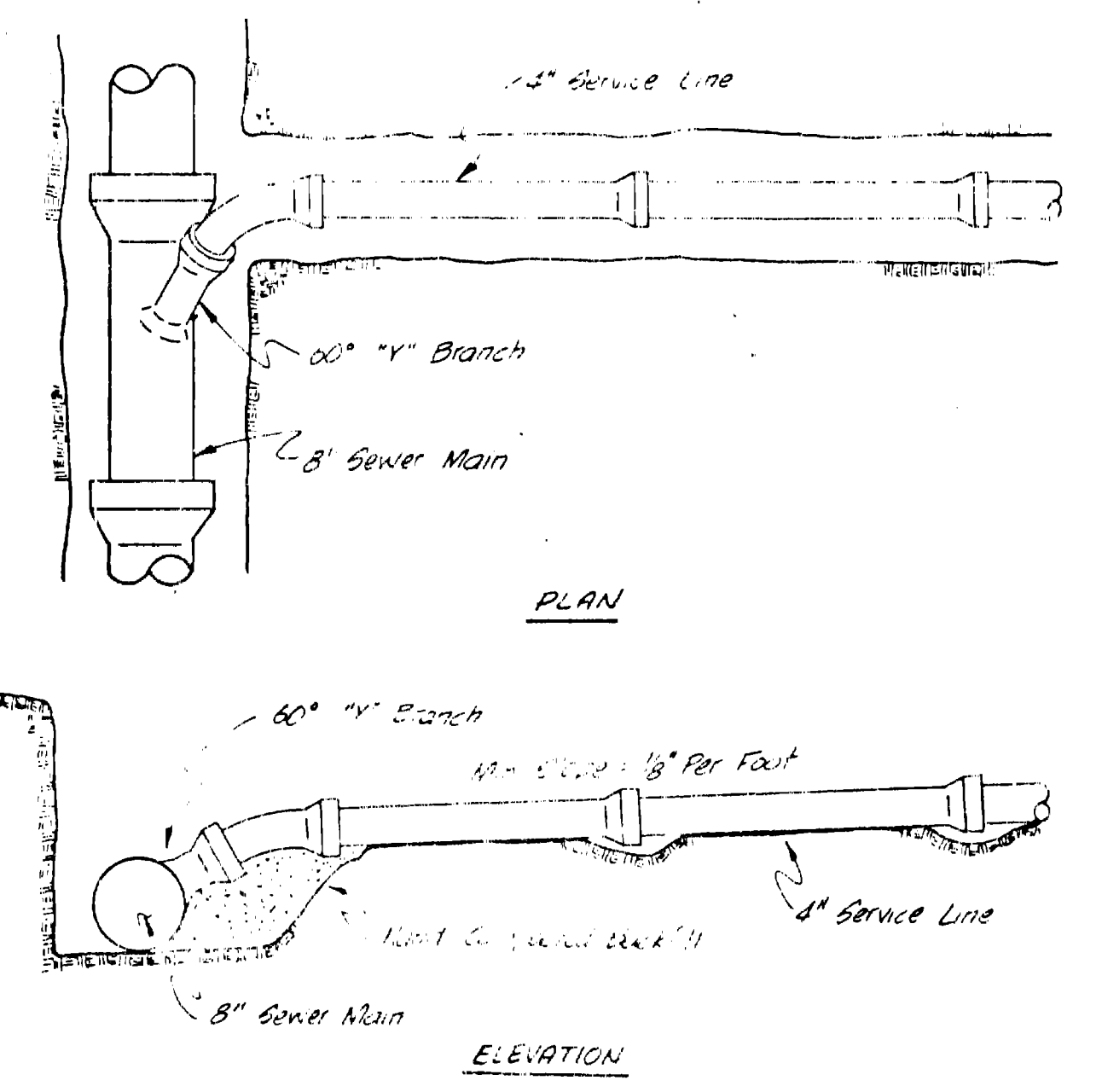
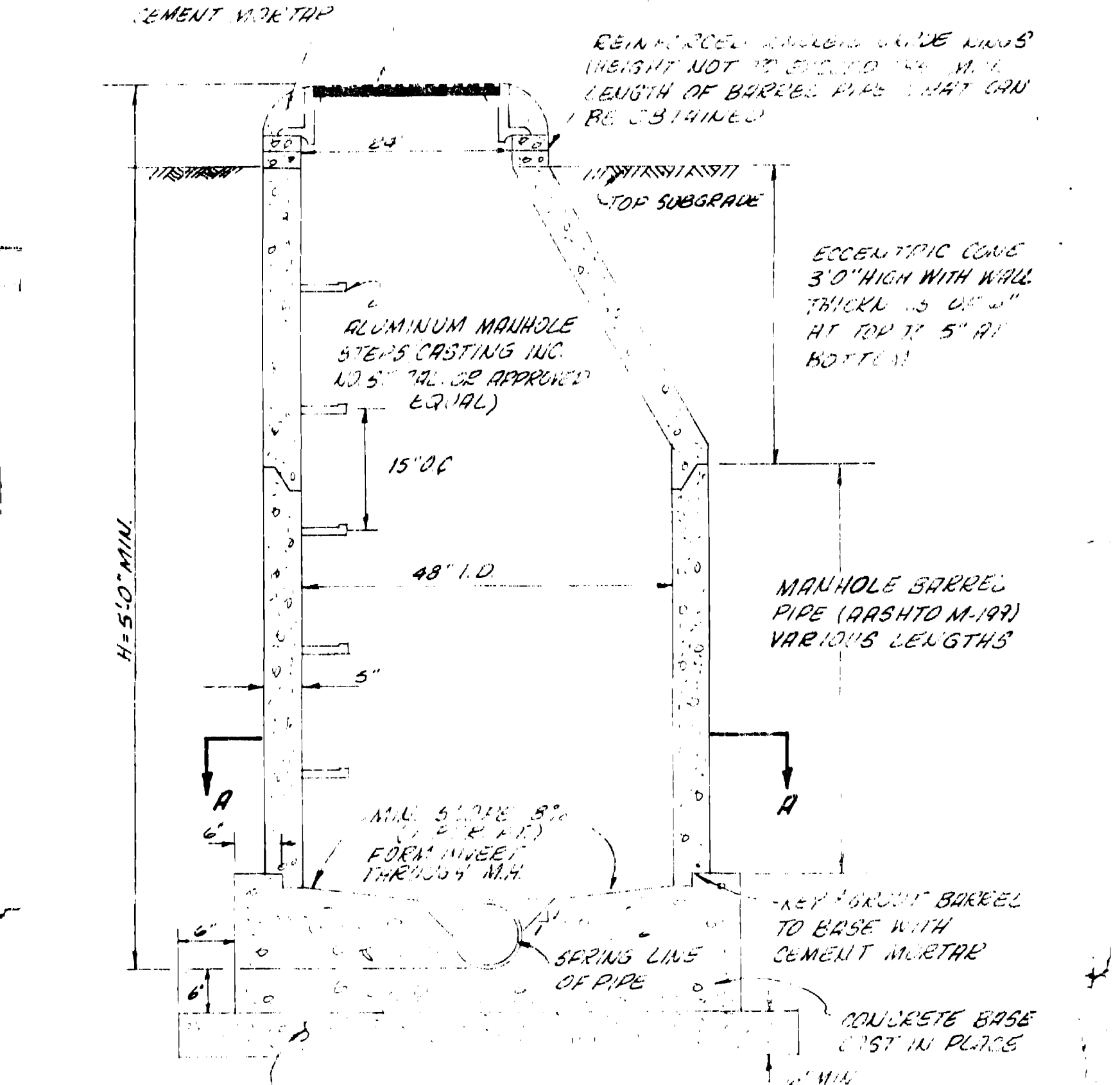
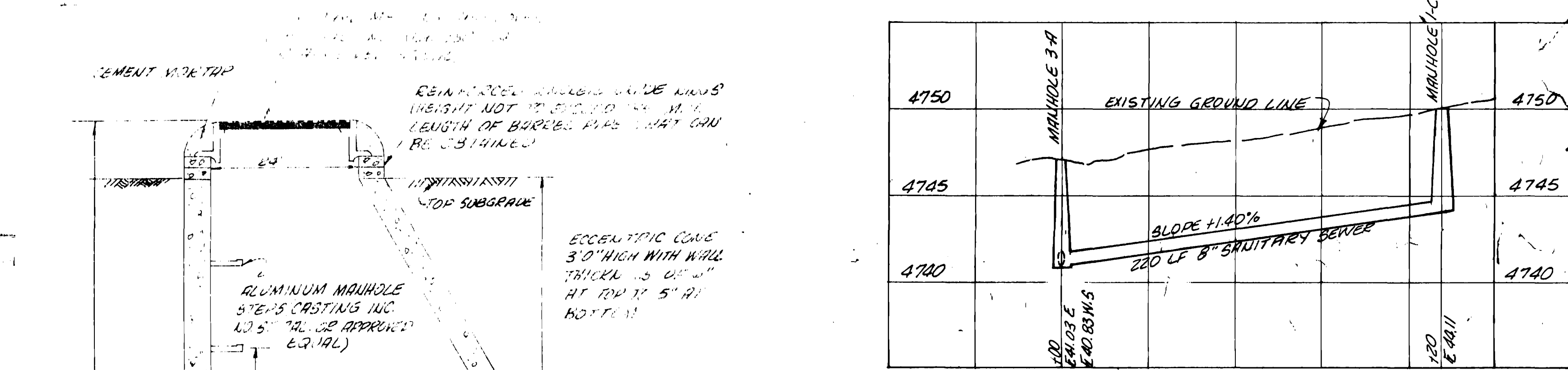
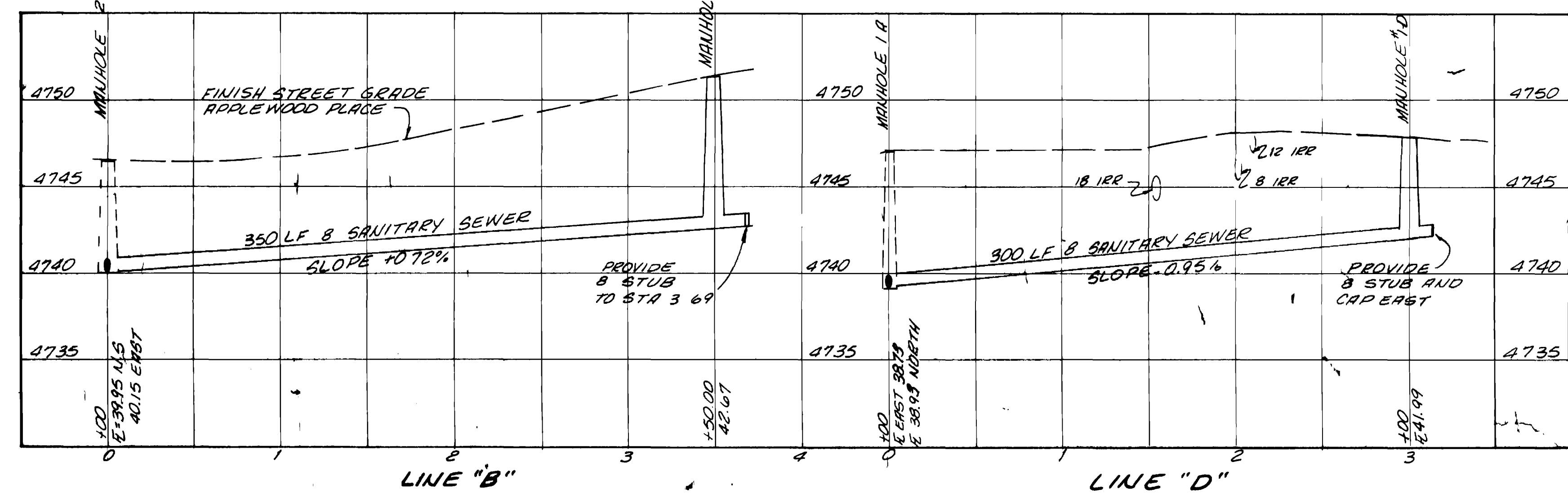
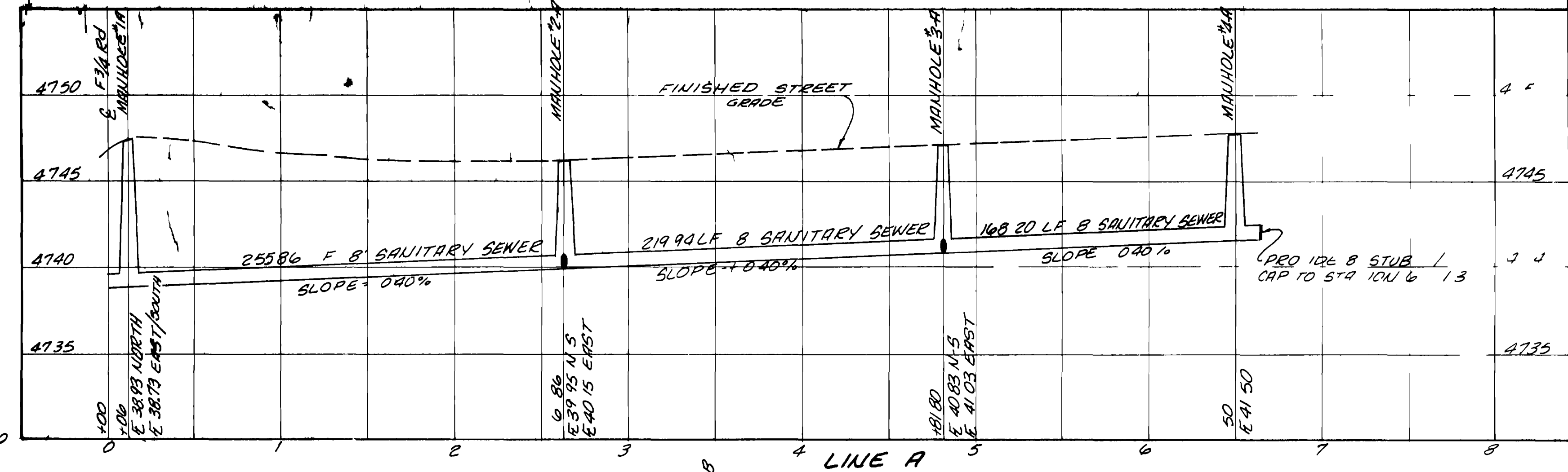
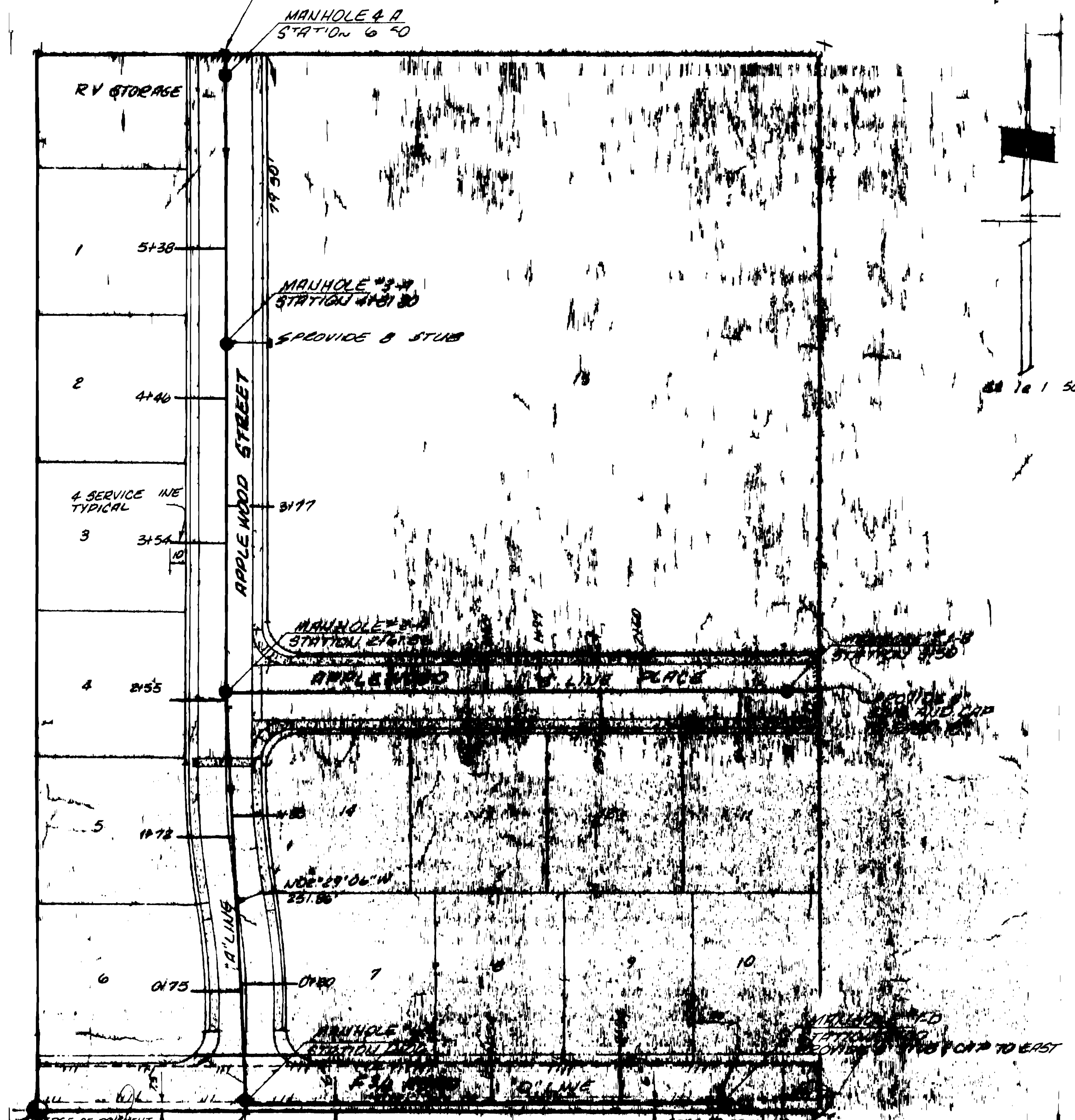


PROVIDE 8" STUB & CAP TO NORTH



QUANTITIES
 1500 LF 8" SANITARY SEWER
 7 STANDARD MANHOLES
 19 SERVICE CONNECTIONS

- GENERAL NOTES
 1. ALL CONSTRUCTION TO BE DONE IN ACCORDANCE WITH THE CITY OF GRAND JUNCTION SPECIFICATIONS.
 2. TOP OF ECCENTRIC CONE TO BE SET @ TOP OF SUB GRADE (STREET CONTRACTOR TO SET RIMS TO FINISH GRADE OF STREETS).
 3. ALL SEWER SERVICES TO EXTEND A MINIMUM OF 10' BEYOND PROPERTY LINE.
 4. SEWER AND WATER SERVICES SHALL HAVE A MINIMUM SEPARATION OF 10' AT ALL TIMES.

AS BUILT DRAWINGS



NOTE:
 This is to certify that the system infiltration does not exceed 200 gallons per inch diameter per mile of length per day.

PARSON ENGINEERING INC. DATE FEB 1978 SCALE AS SHOWN
 APPLE CREST SUBDIVISION SANITARY SEWER PLAN DETAILS AND PROFILES CITY OF GRAND JUNCTION, COLO. SHEET 1 OF 1