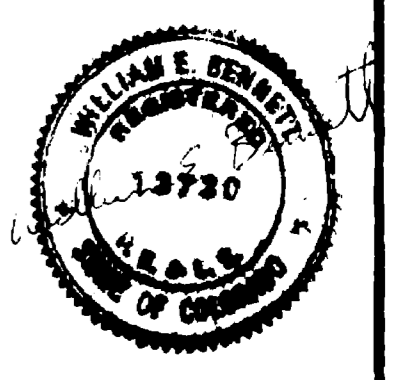


FRUITVALE SANITATION DISTRICT NOTE
 1. ALL CONSTRUCTION TO BE DONE IN ACCORDANCE WITH THE FRUITVALE SANITATION DISTRICT SPECIFICATIONS.
 2. RIM ELEVATION TO BE DETERMINED AT TIME OF CONSTRUCTION.

NOTE:
 This is to certify that the system infiltration does not exceed 200 gallons per inch diameter per mile of length per day.

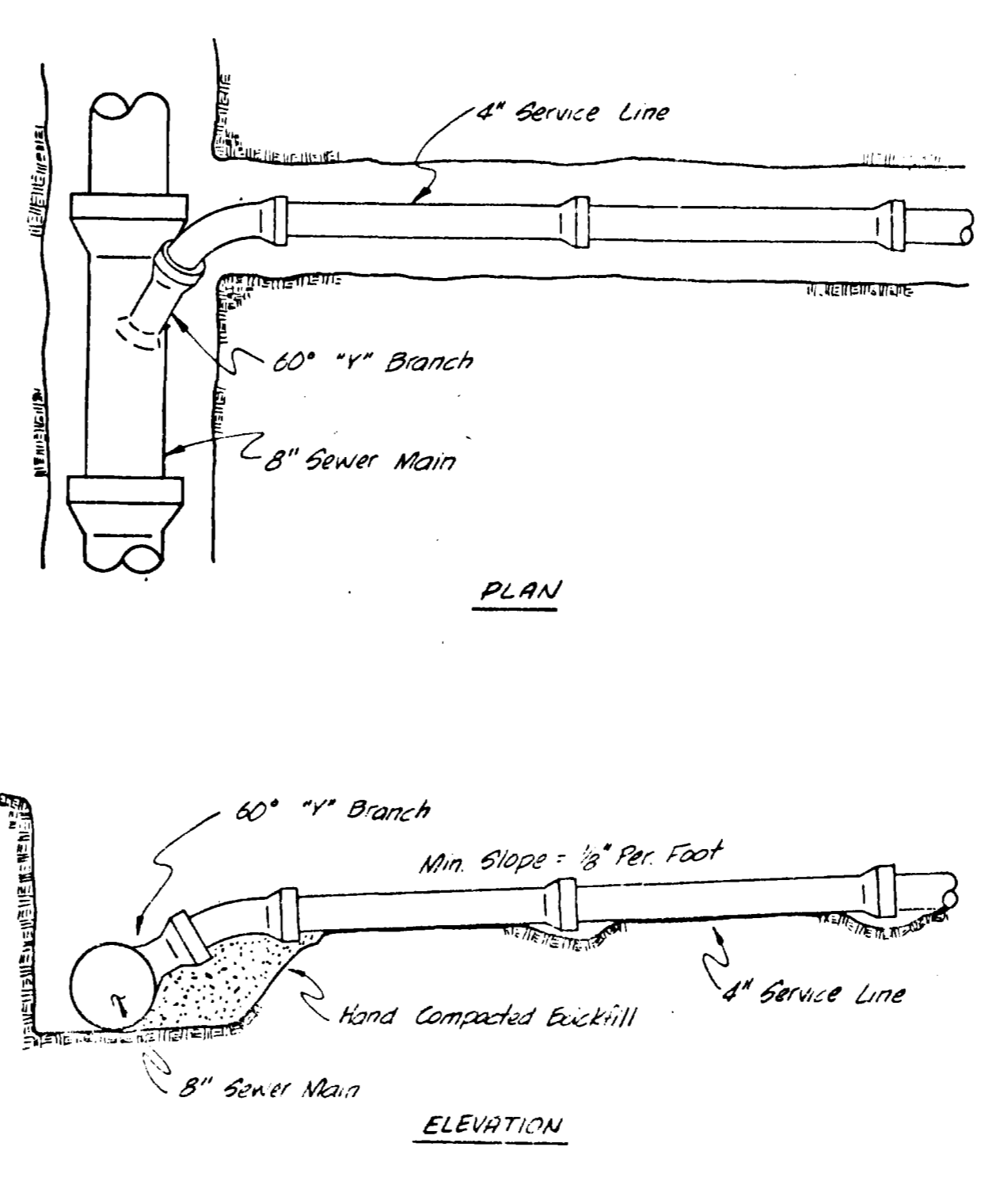
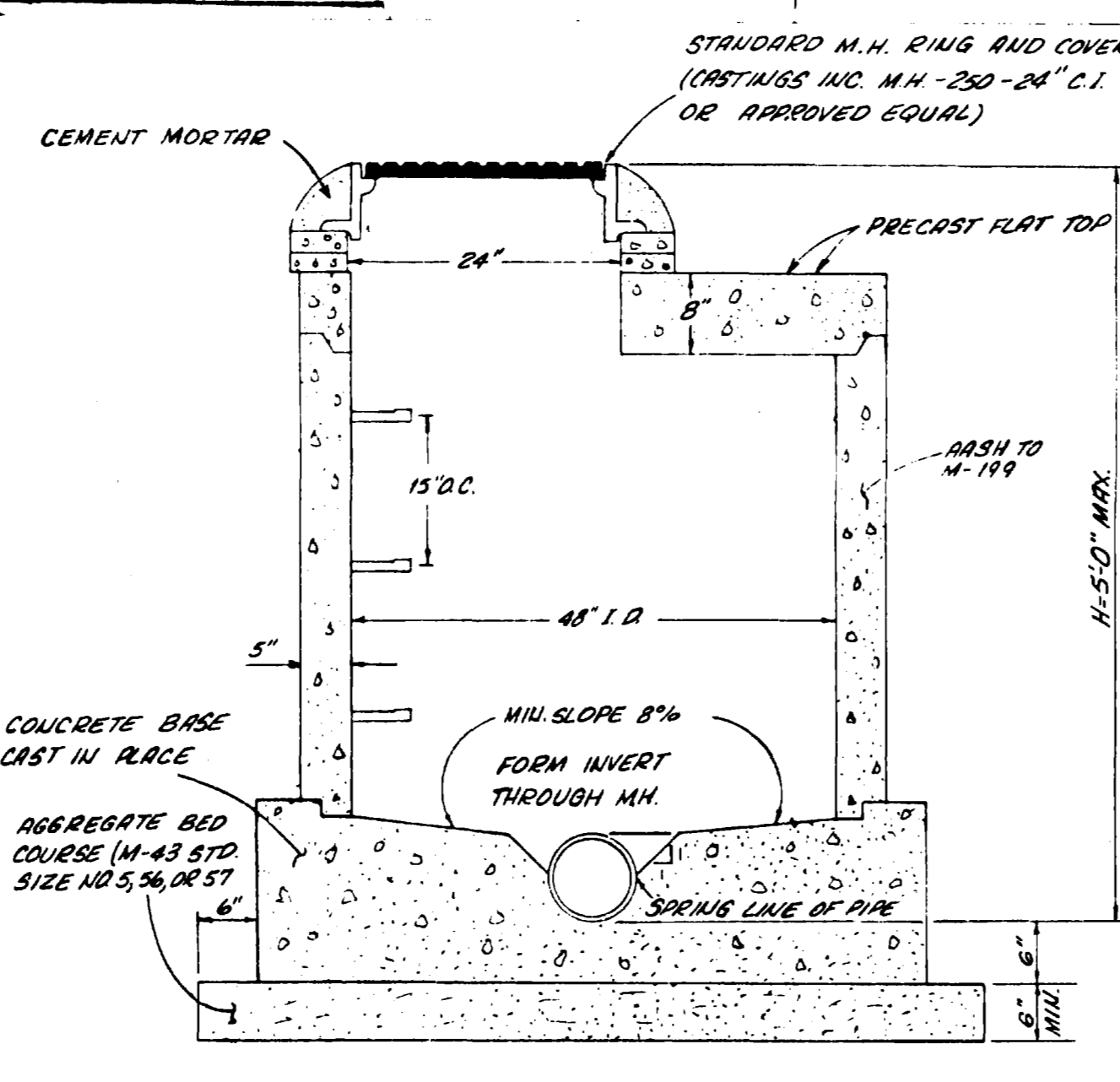
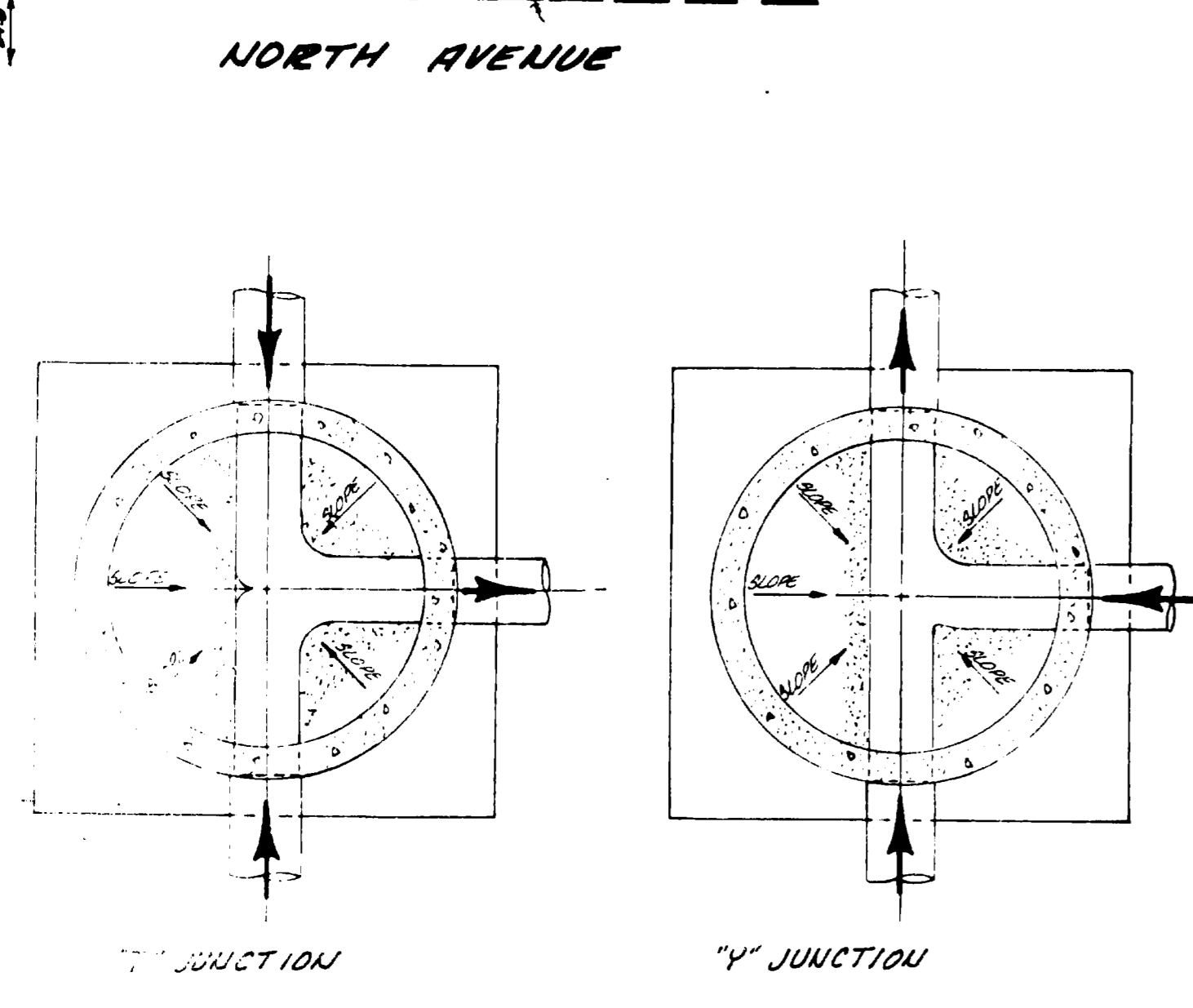
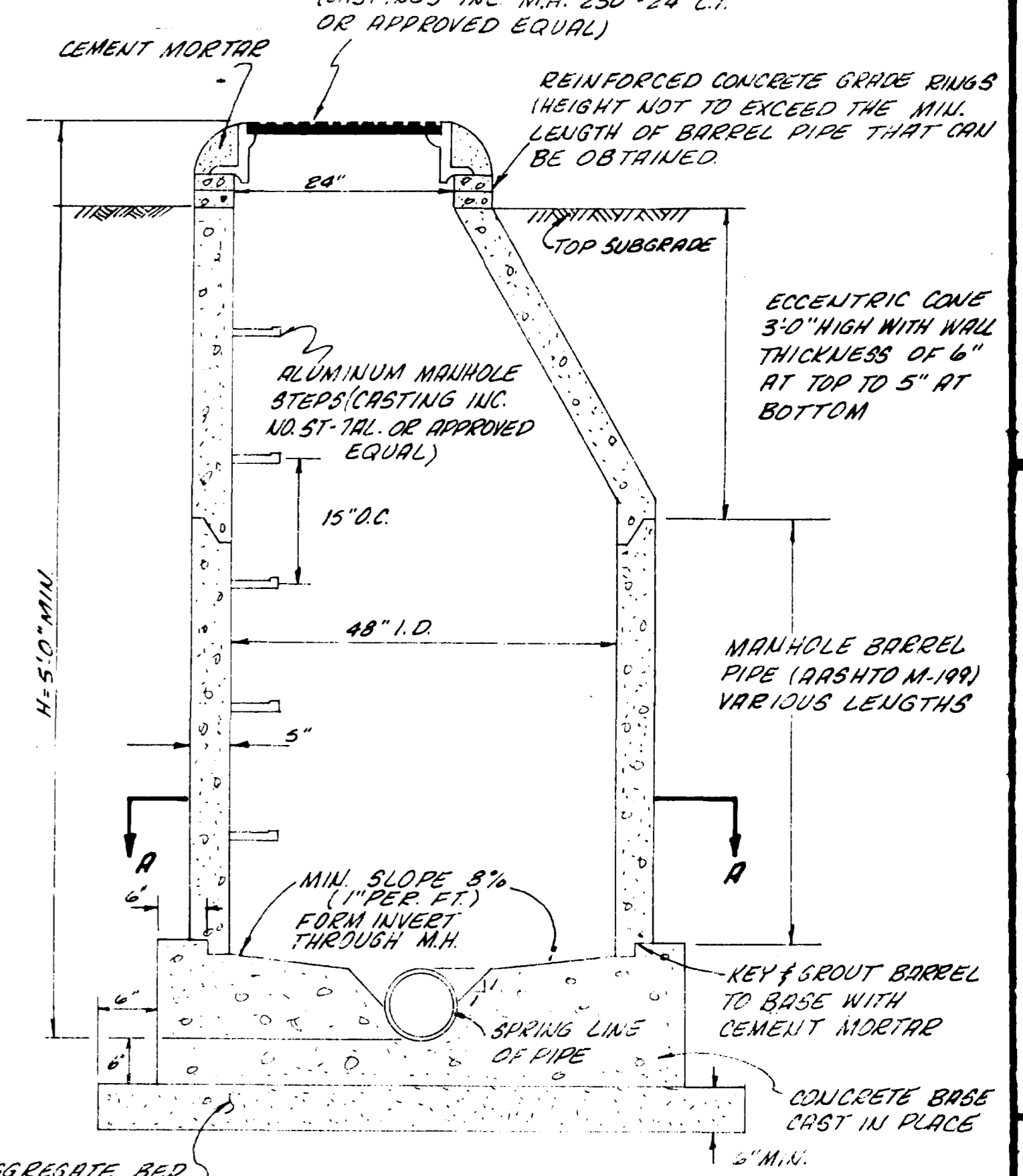
AS BUILT DRAWINGS



- QUANTITIES**
- 595 LF 8" SANITARY SEWER
 - 3 SHALLOW MANHOLE
 - 1 STANDARD MANHOLE
 - 6 SERVICE CONNECTIONS
 - 80 LF 4" SERVICE LINE

APPROVED _____ DATE _____
 FRUITVALE SANITATION DISTRICT

STANDARD M.H. RING AND COVER
 (CASTINGS INC. M.H. 250-24" C.I. OR APPROVED EQUAL)



PARAGON ENGINEERING, INC.
 SEPT. 1979
 AS SHOWN
 SANITARY SEWER PLAN, PROFILES AND DETAILS
 J and J SUBDIVISION
 MESA COUNTY, COLO.