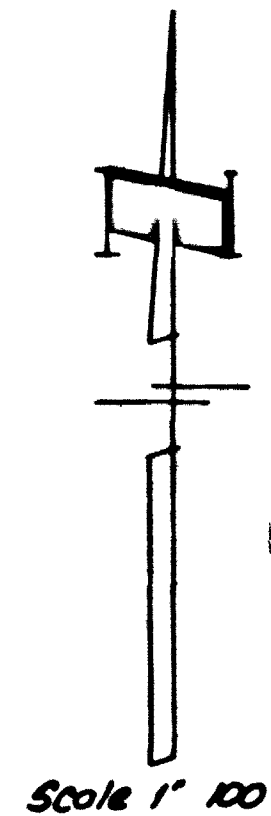
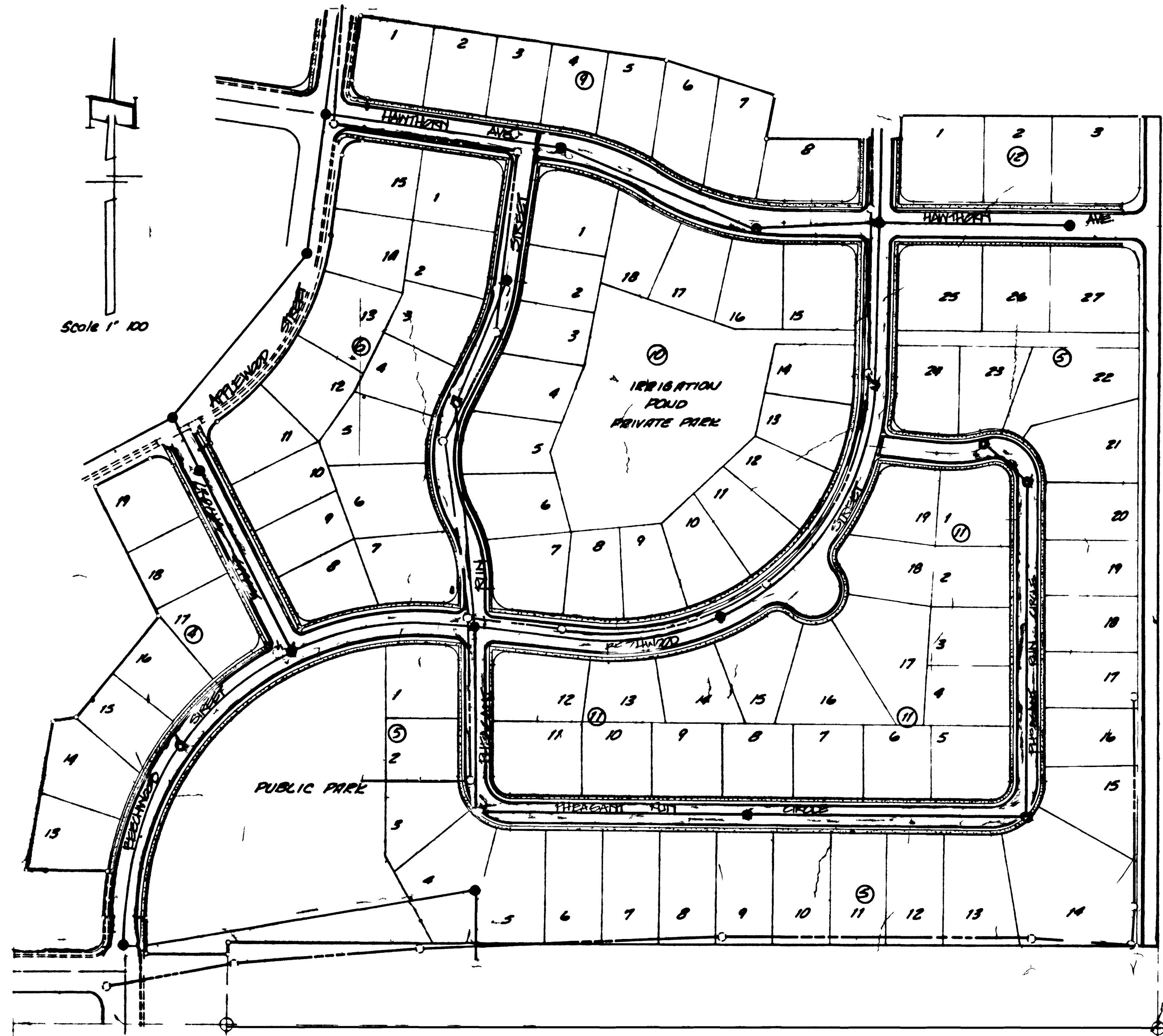


PHEASANT RUN, SPRING VALLEY - FILING NO FIVE

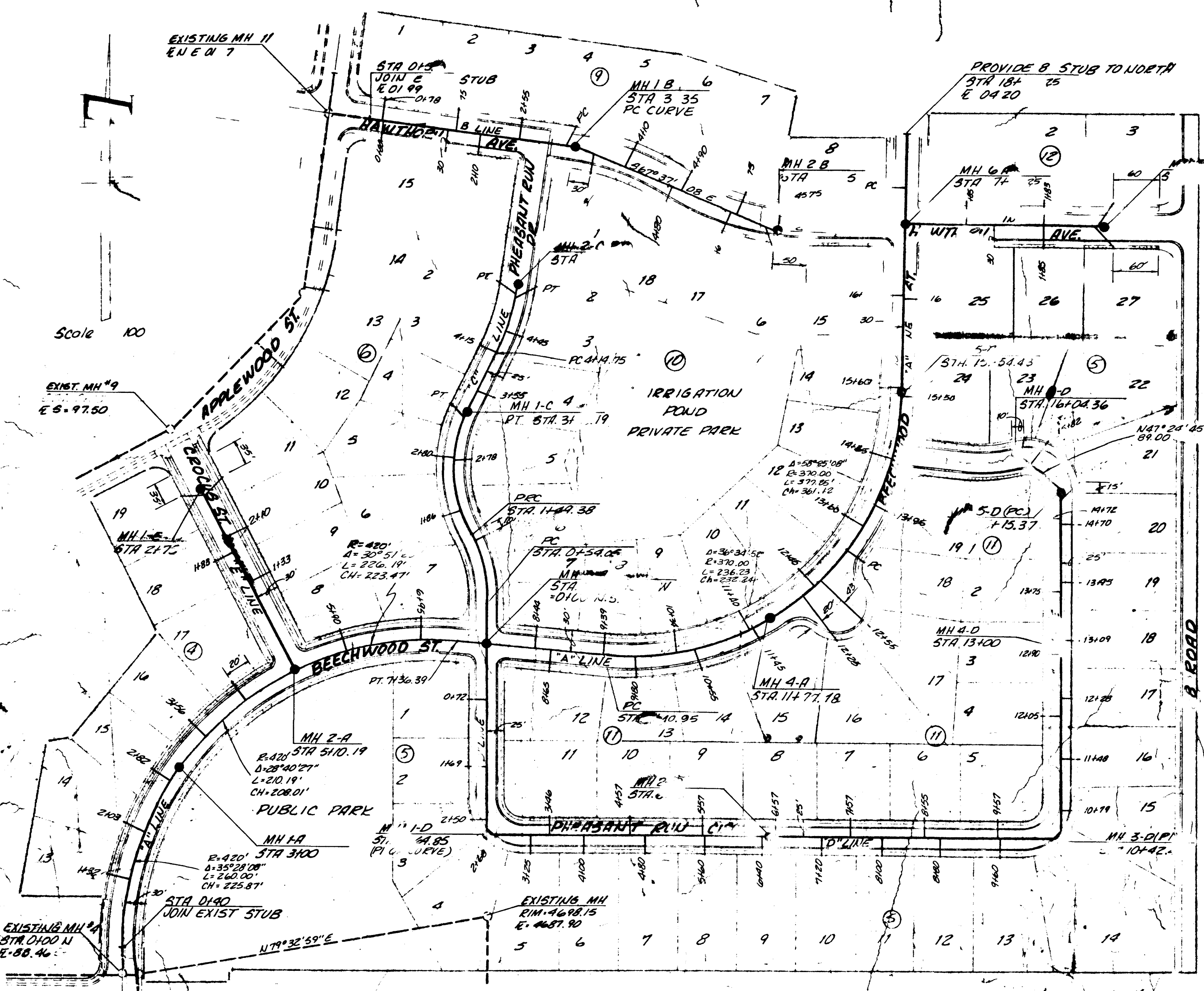


LEGEND

- SANITARY CONDUIT AND MANHOLE
- OPEN CONDUIT AND MANHOLE
- ◇— IRRIGATION MANHOLE

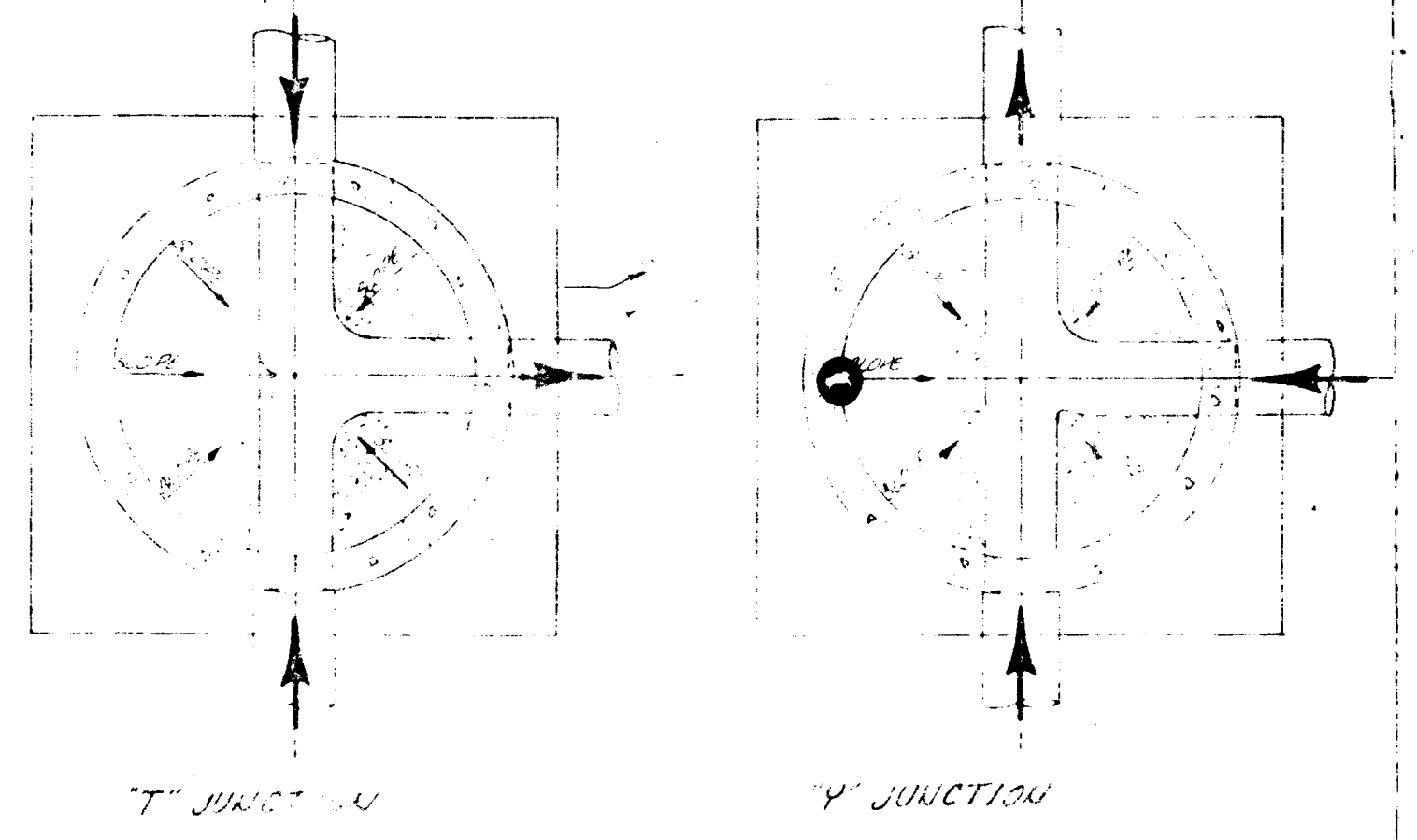
AS BUILT DRAWINGS
10-25-00

PARAGON ENGINEERING, INC.
 E. 8th & Co. Sullivan
 PO. BOX 228 APT. 401 NO. ORADO CO. COLORADO 80424
 LICENSE NO. 27
 REAL ESTATE
 IRRIGATION, SEWER, WATER & SANITARY
 SENIOR MANHOLE CONTRACTOR
 PHEASANT RUN
 SPRING VALLEY FILING NO. FIVE
 CITY OF GRAND JUNCTION COLO.

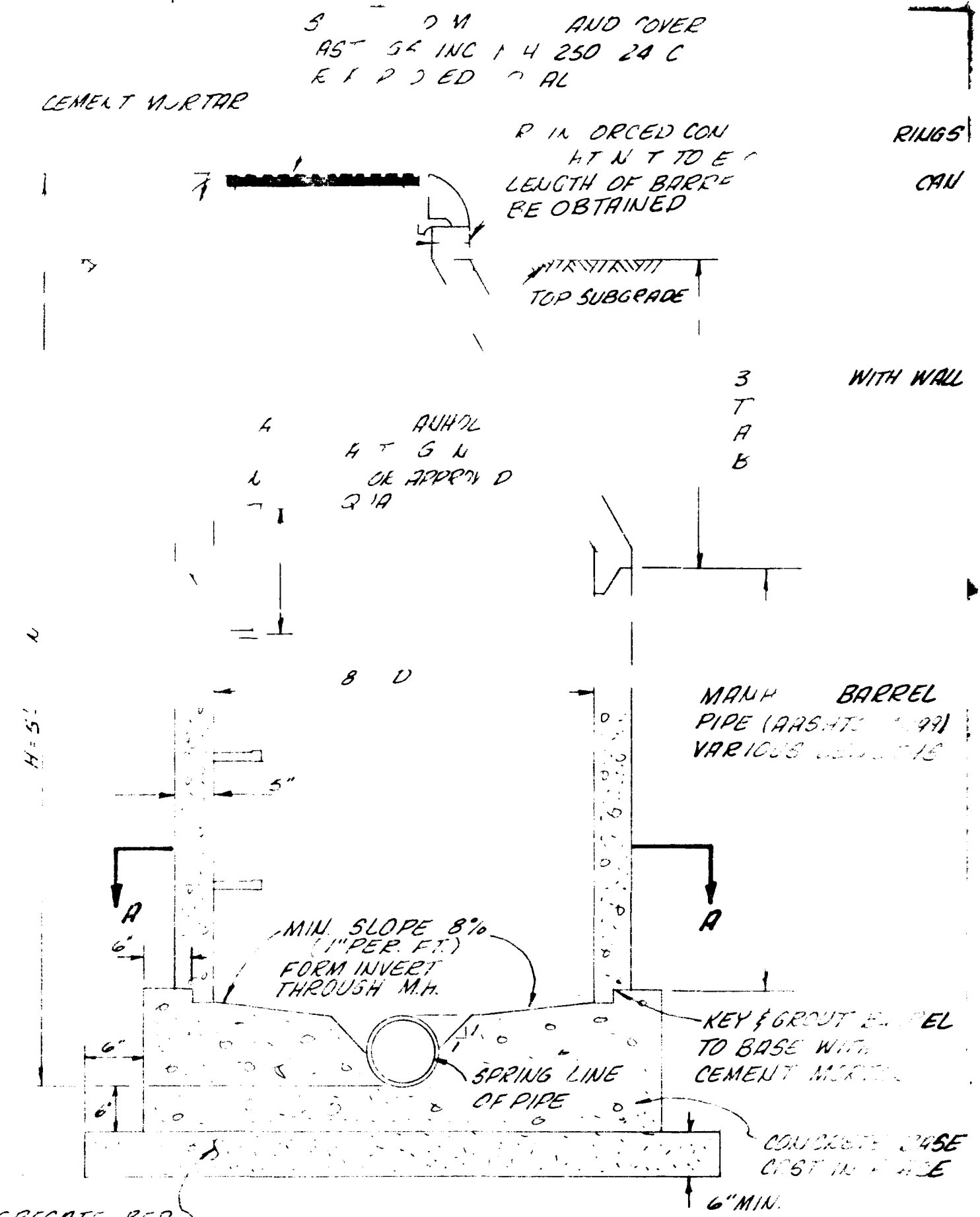


Scale 100

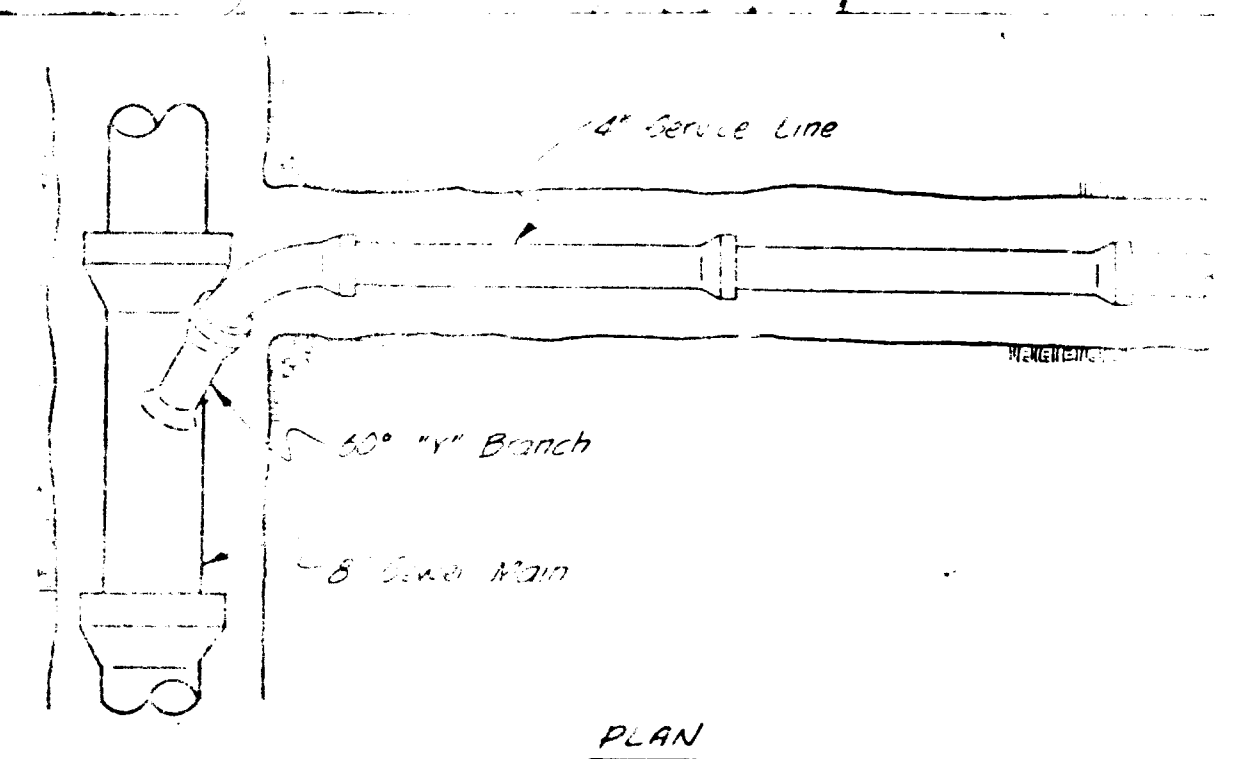
QUANTITIES
 5157 LF 8" SANITARY SEWER
 18 MANHOLES
 91 SERVICE CONNECTIONS



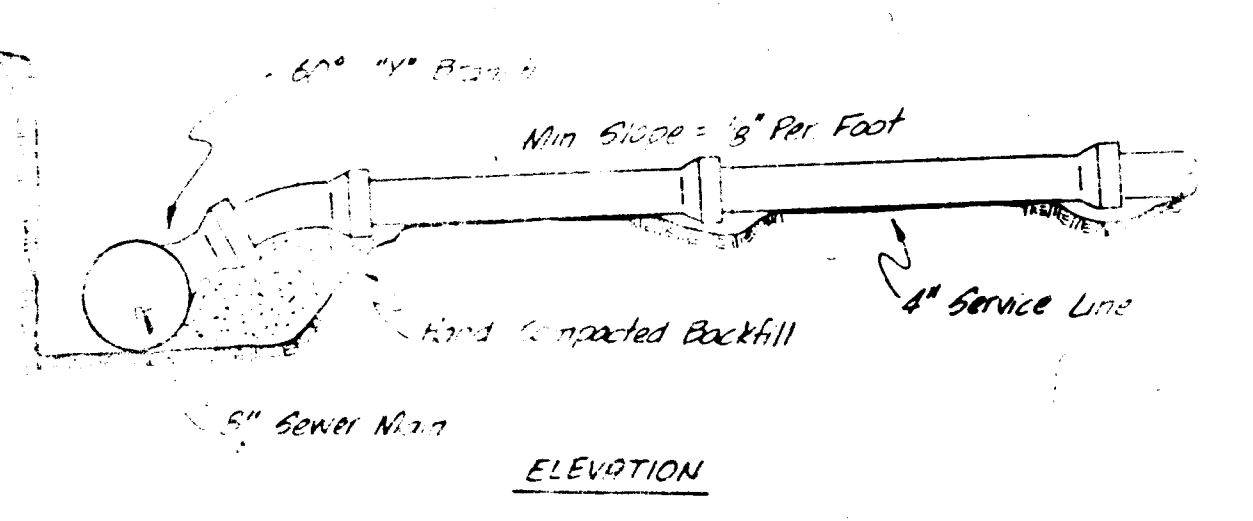
SECTION "A" - "A"



STANDARD MANHOLE

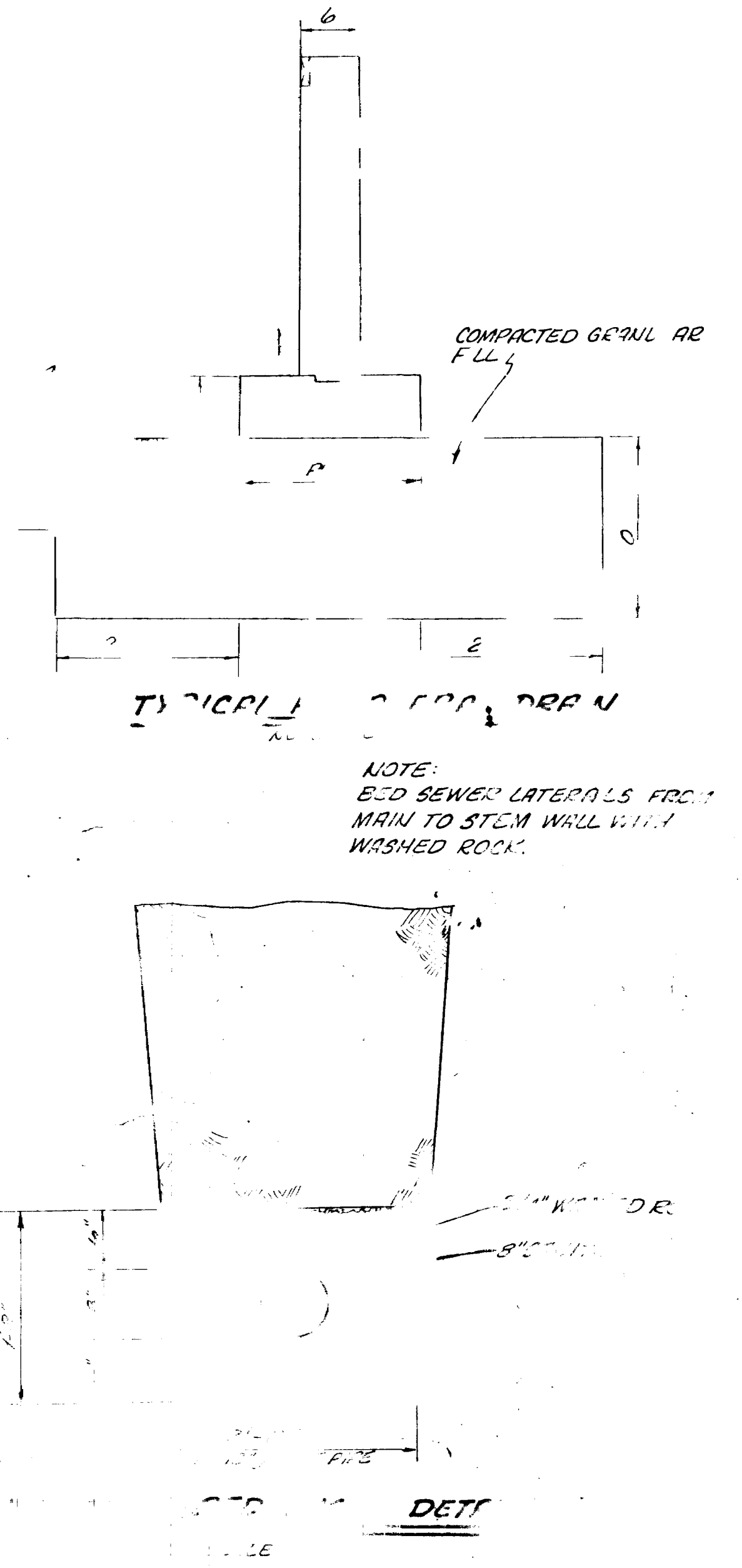


PLAN



ELEVATION

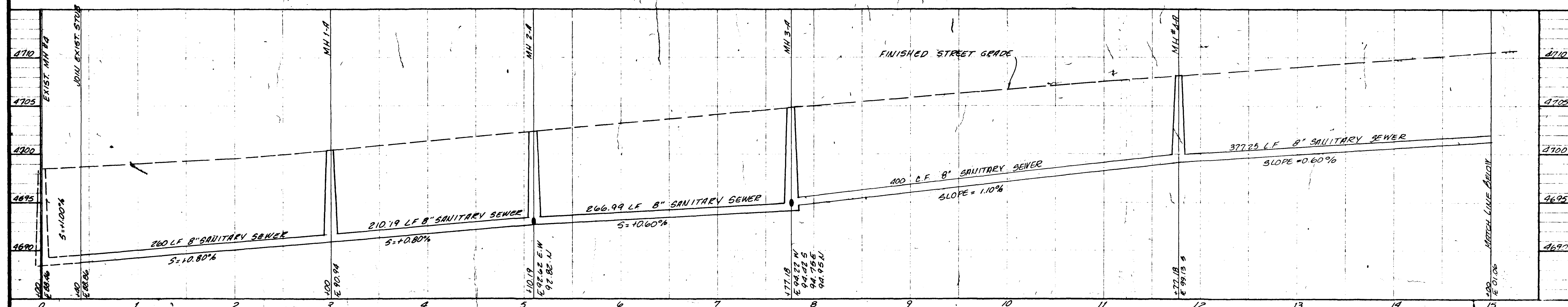
STANDARD SERVICE CONNECTION



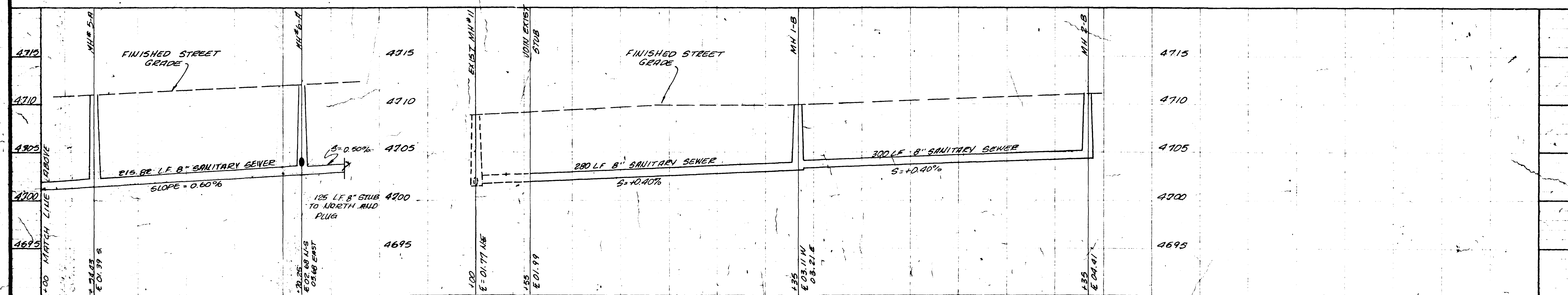
TYPICAL 6" BARREL PIPE

NOTE:
 BED SEWER LATERALS FROM
 MAIN TO STEM WALL WITH
 WASHED ROCK.

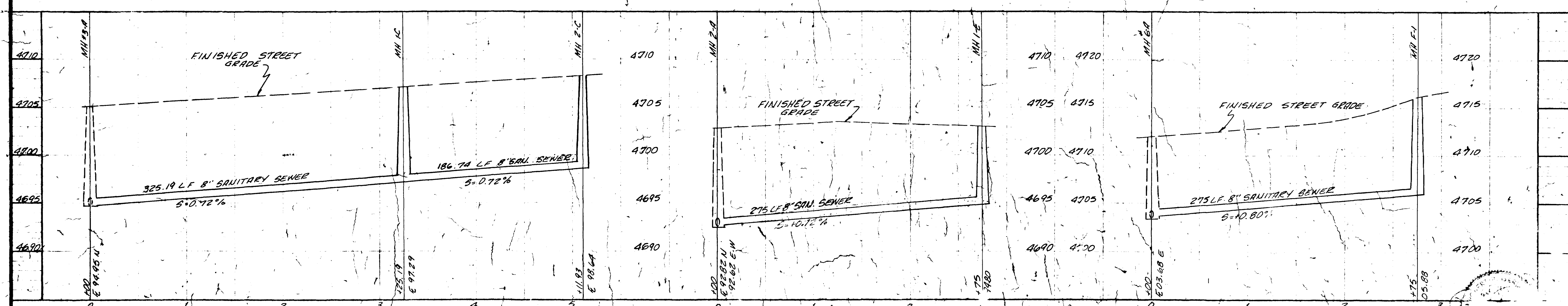
DETAIL



"A" LINE



"B" LINE

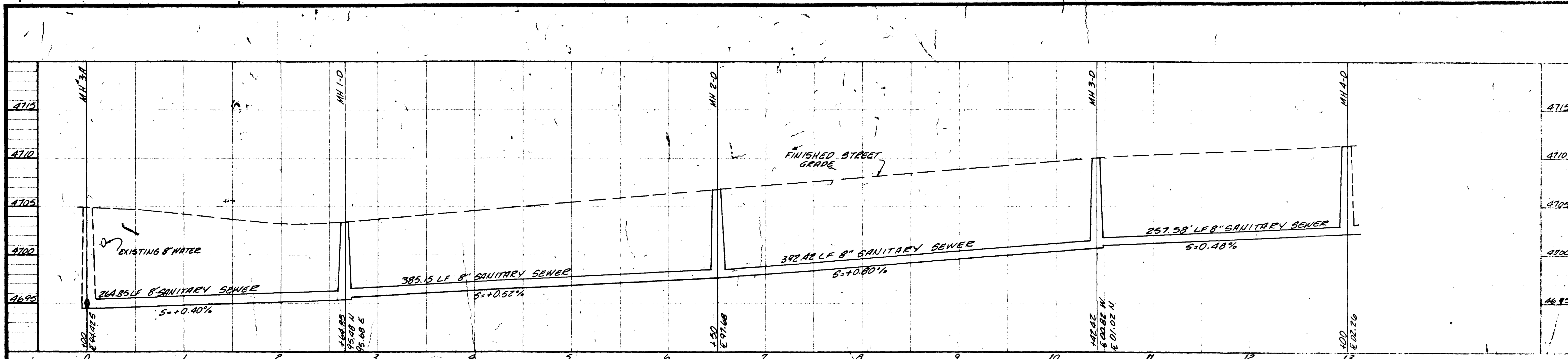


"C" LINE

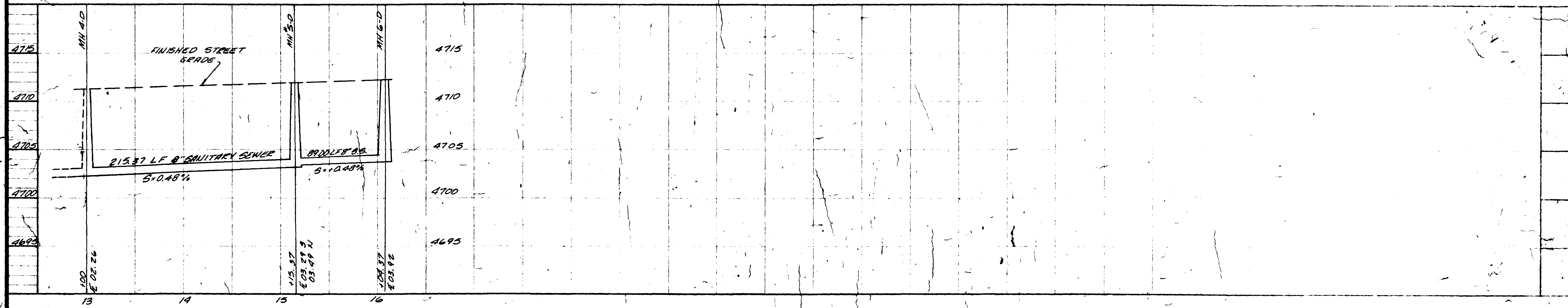
"E" LINE

"F" LINE

PARAGON ENGINEERING, INC.
 Engineering Consultants
 P.O. BOX 2872 • DENVER, COLORADO • 80216 • PHONE 243-8966
 DATE: NOVEMBER, 1977
 SCALE: 1/4" = 1' VERT.
 1" = 50' HORIZ.
 SHEPARD RUN FIVE
 CROSSING VALLEY FILING NO. FIVE
 CITY OF DENVER JUNCTION, COLO.



"D" LINE



"D" LINE

NOVEMBER, 1971
 PARACOR ENGINEERING, INC.
 11.5" VERT.
 1"=50' HORIZ.

SANITARY SEWER
 PROFILES

PHEASANT RUN
 SIZING VALLEY FILING NO. FIVE
 CITY OF GRAND JUNCTION, COLO.

NOTE:
 This is to certify that the information shown on this drawing was prepared by the engineer or other qualified person named above and that the same is true and correct to the best of his knowledge and belief.



AS BUILT DRAWINGS