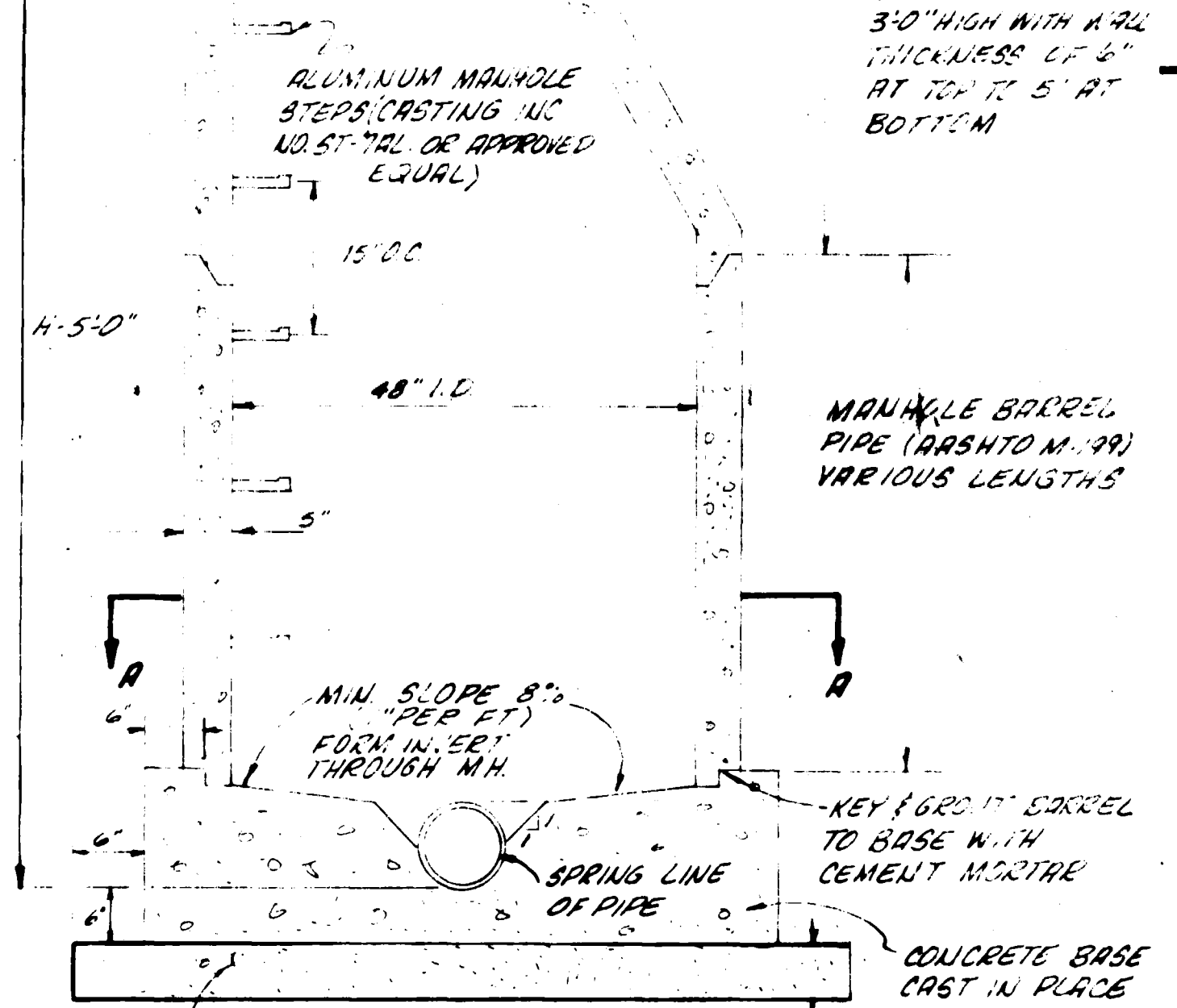
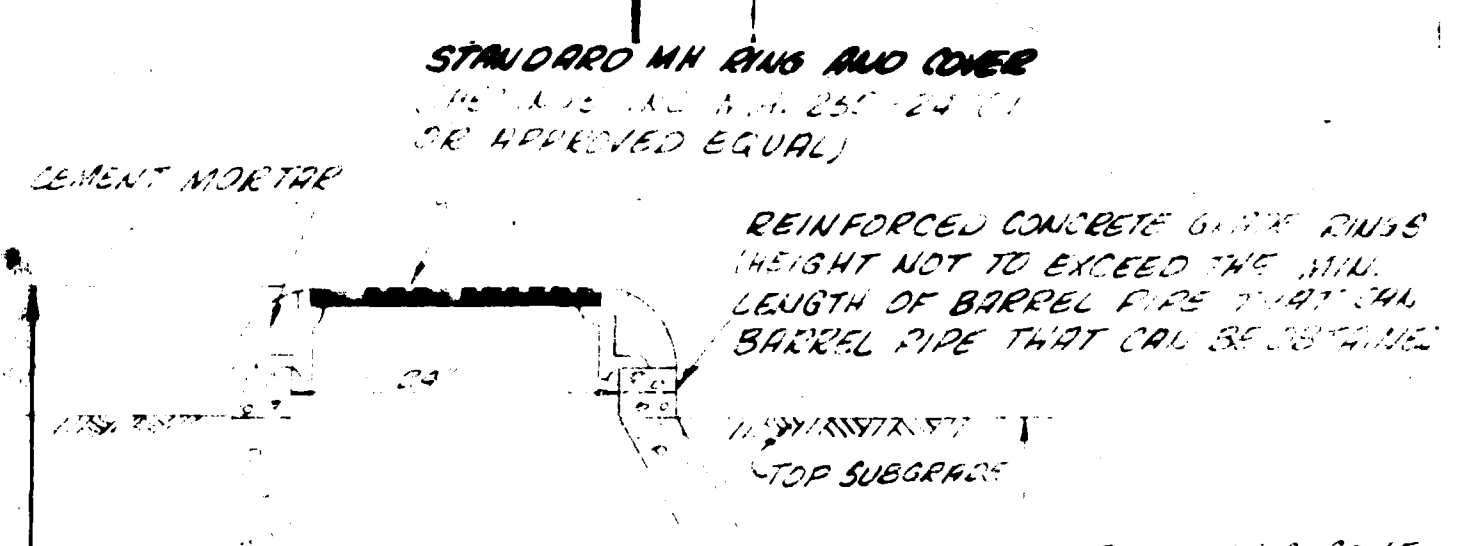
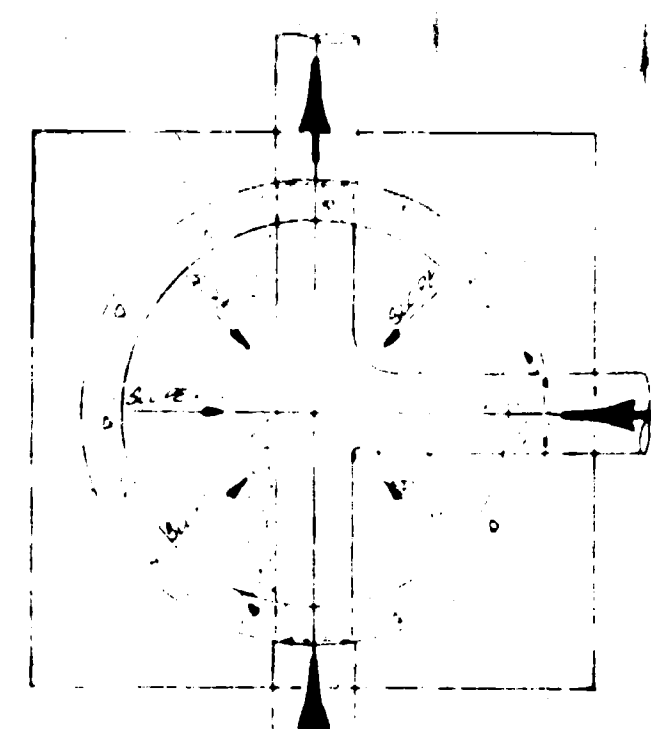
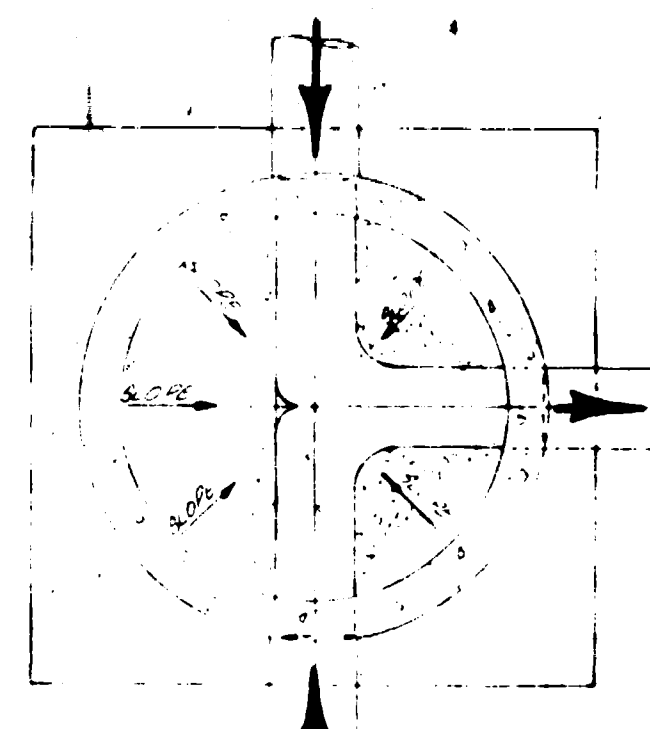
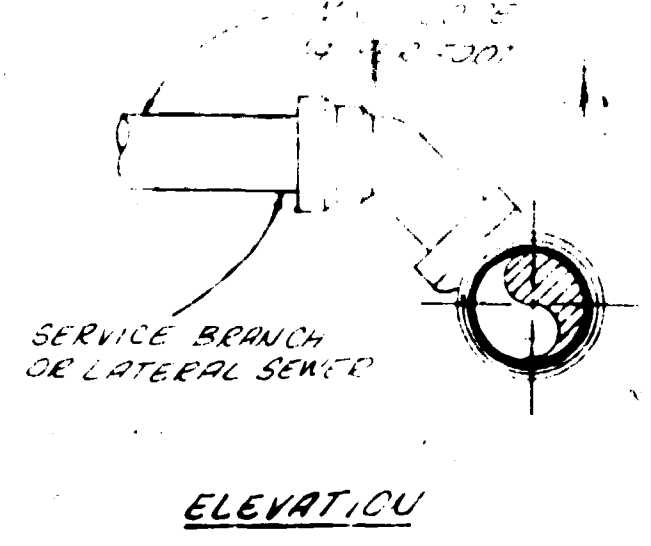
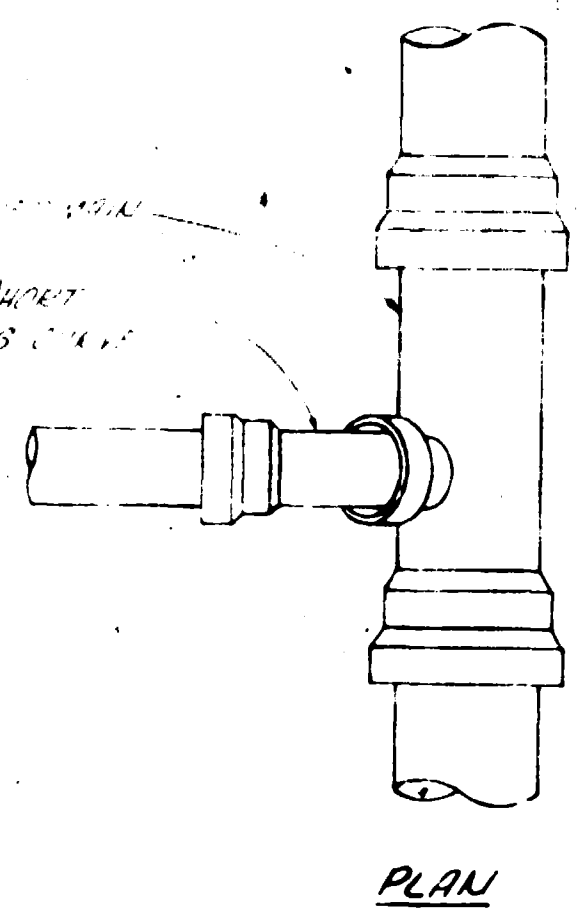


NOTE: CONTRACTOR TO NOTIFY CITY OF GRAND JUNCTION UTILITIES DEPT. BEFORE CONSTRUCTION TO LOCATE 24" WATER MAIN.

SEWER LINE ENCASUREMENT DETAIL



BLOCK ONE



GENERAL NOTES
 1. TOP OF ECCENTRIC COVER TO BE SET TOP OF SUBGRADE (STREET CONTRACTOR TO SET RINGS TO FINISH GRADE OF STREET)
 2. ALL CONSTRUCTION TO BE DONE IN ACCORDANCE WITH THE SPECIFIED MESA MUNICIPAL DISTRICT SPECIFICATIONS.



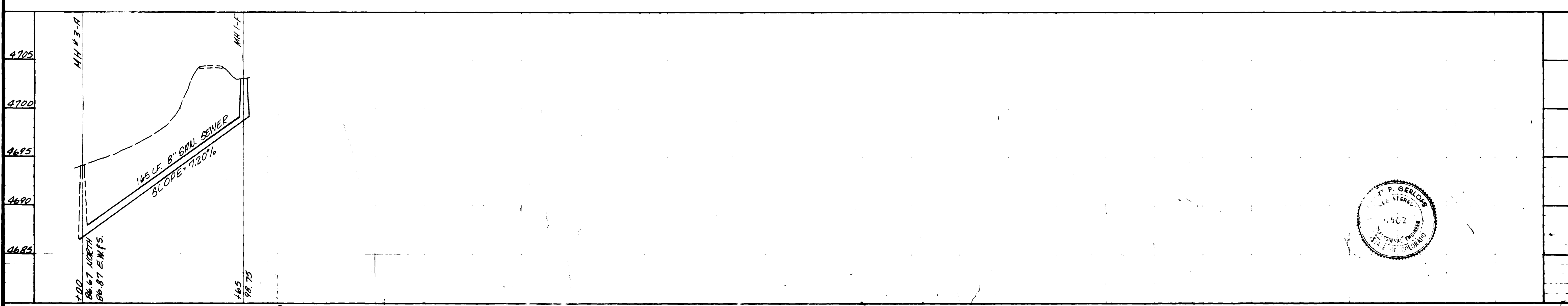
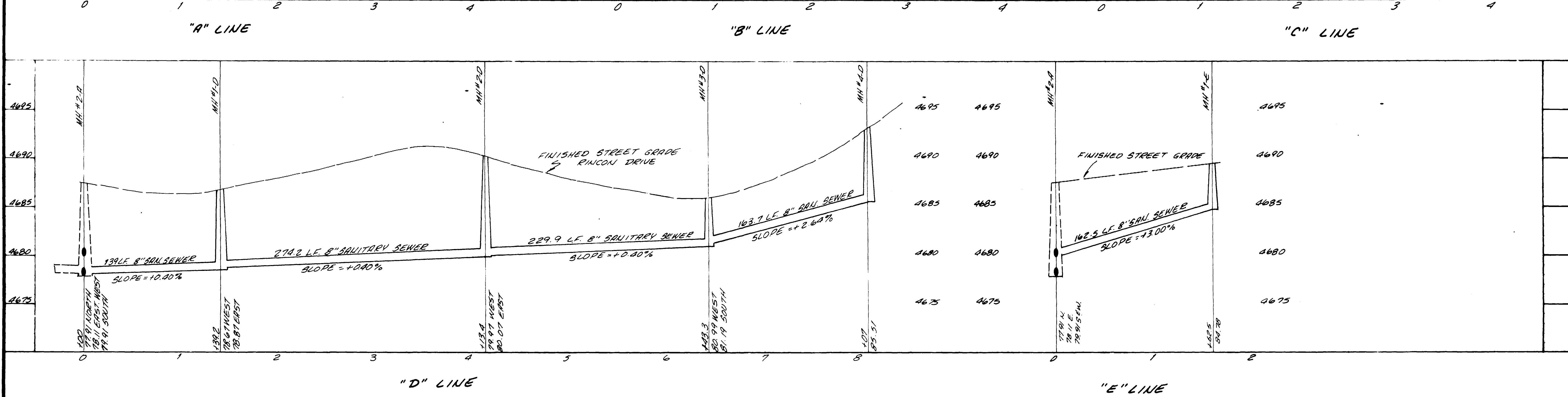
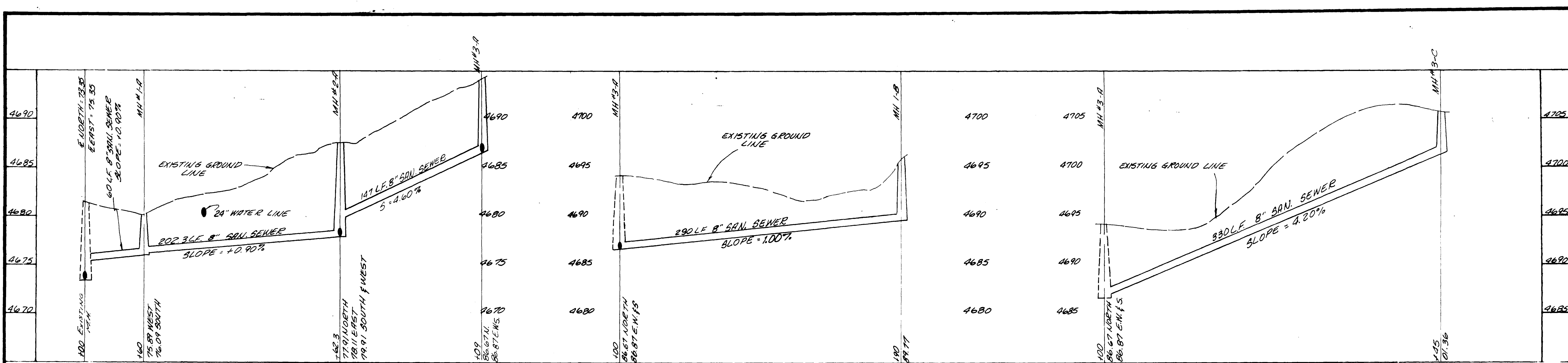
QUANTITIES
 2165 LF 6" SANITARY SEWER
 11 MANHOLES
 81 SERVICE CONNECTIONS

AS BUILT DRAWINGS
 12-27-77

ROBERT J. CERLJES

SCALE 1"=50'

GRAND JUNCTION UTILITIES DEPT.



ROBERT P. GERLOFS
 LICENSED PROFESSIONAL ENGINEER
 STATE OF COLORADO
 LICENSE NO. 6802
 PINCON SUBDIVISION
 MESA COUNTY, COLORADO
 SHEET 2
 DATE: JUNE 1977
 SCALE: 1" = 5' HORIZ.
 1" = 30' VERT.
 02019702.tif

AS BUILT DRAWINGS
12-27-77