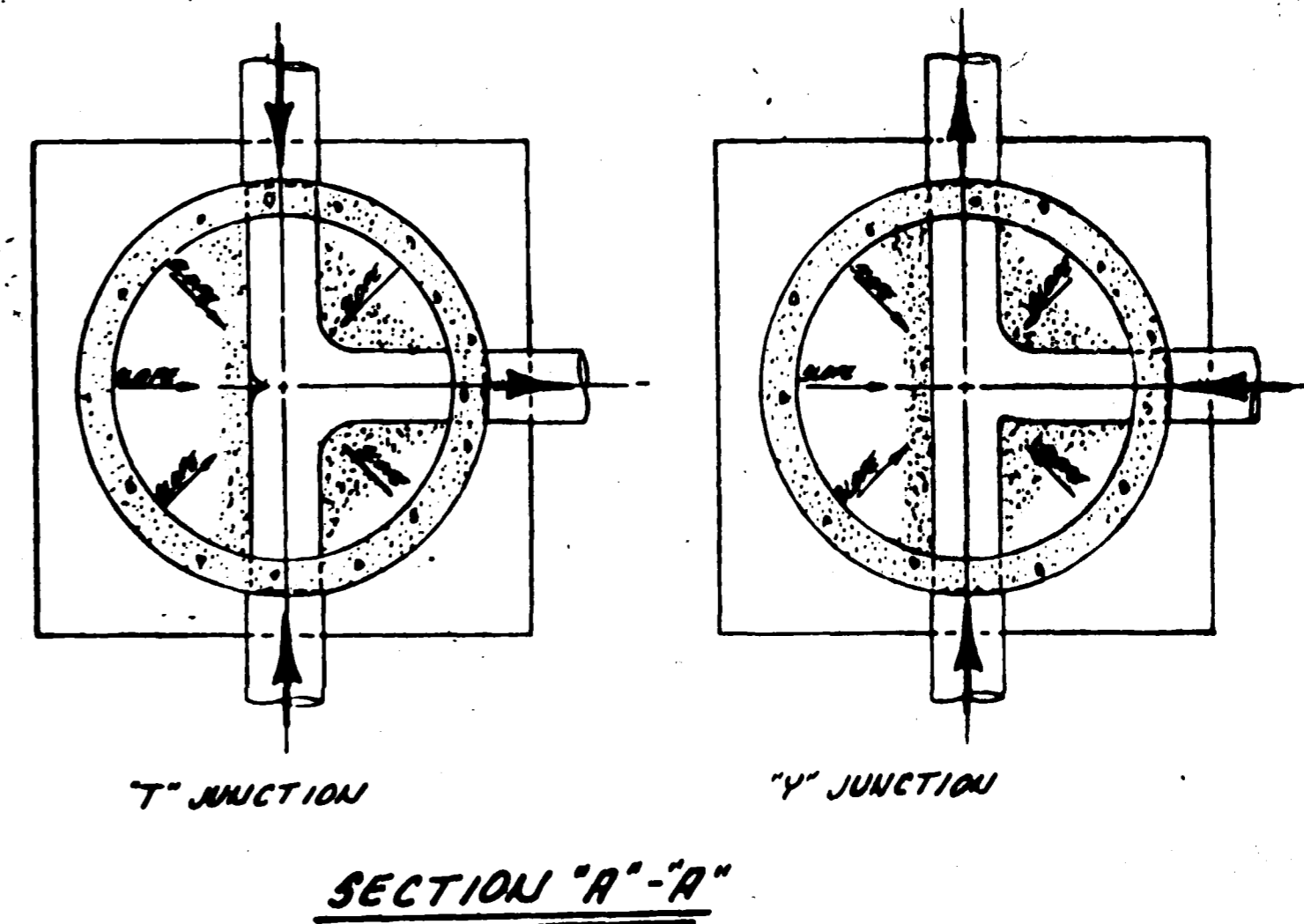
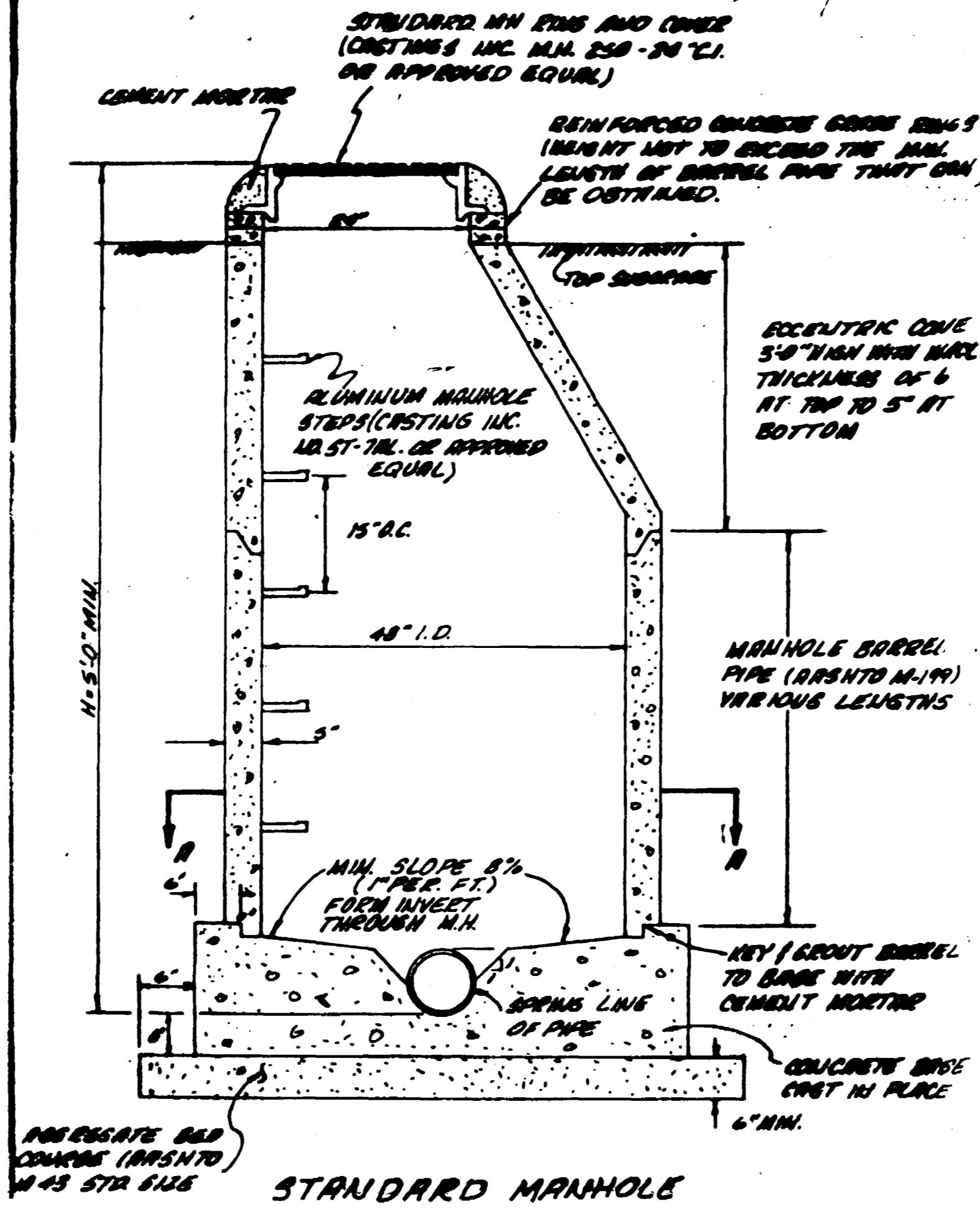


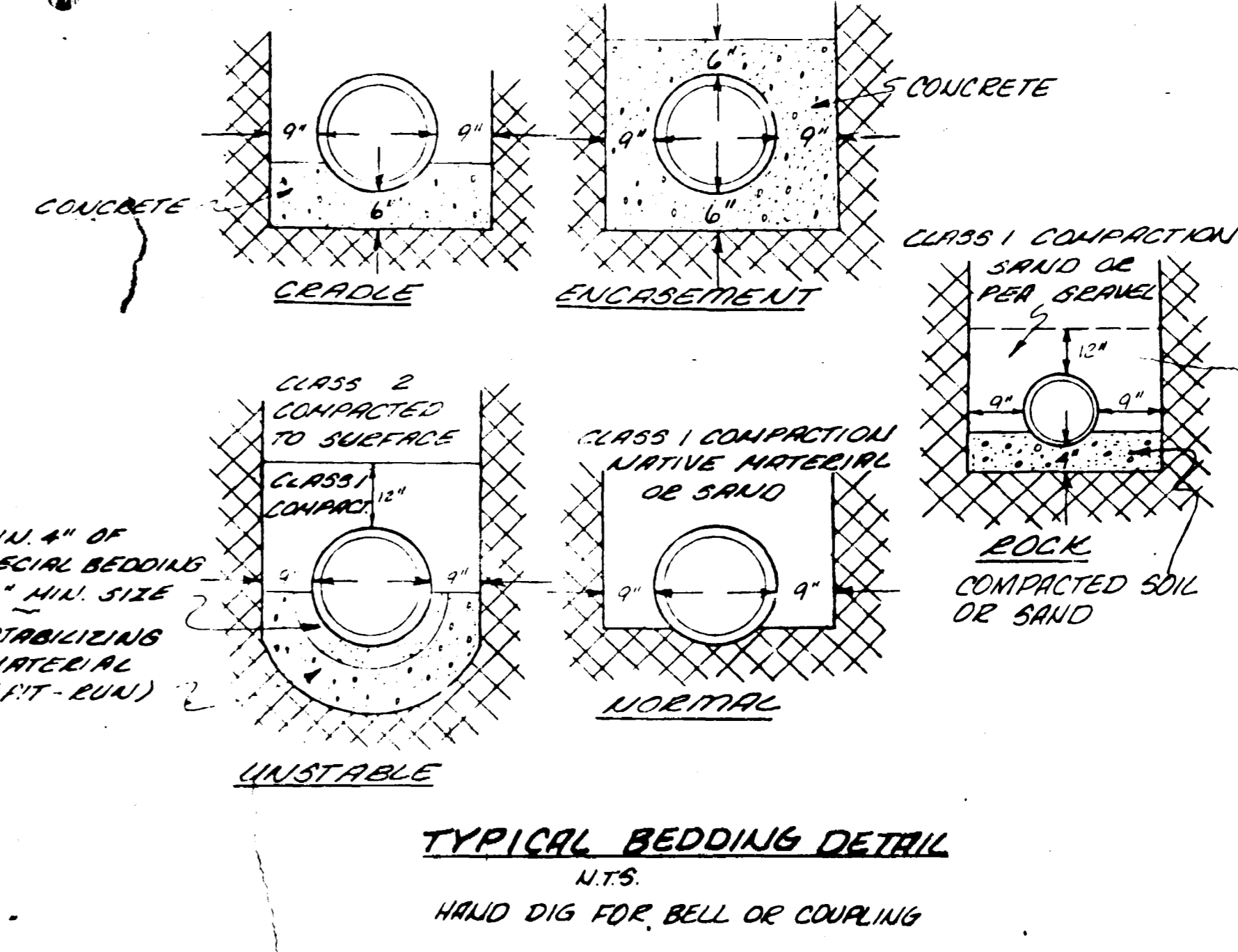
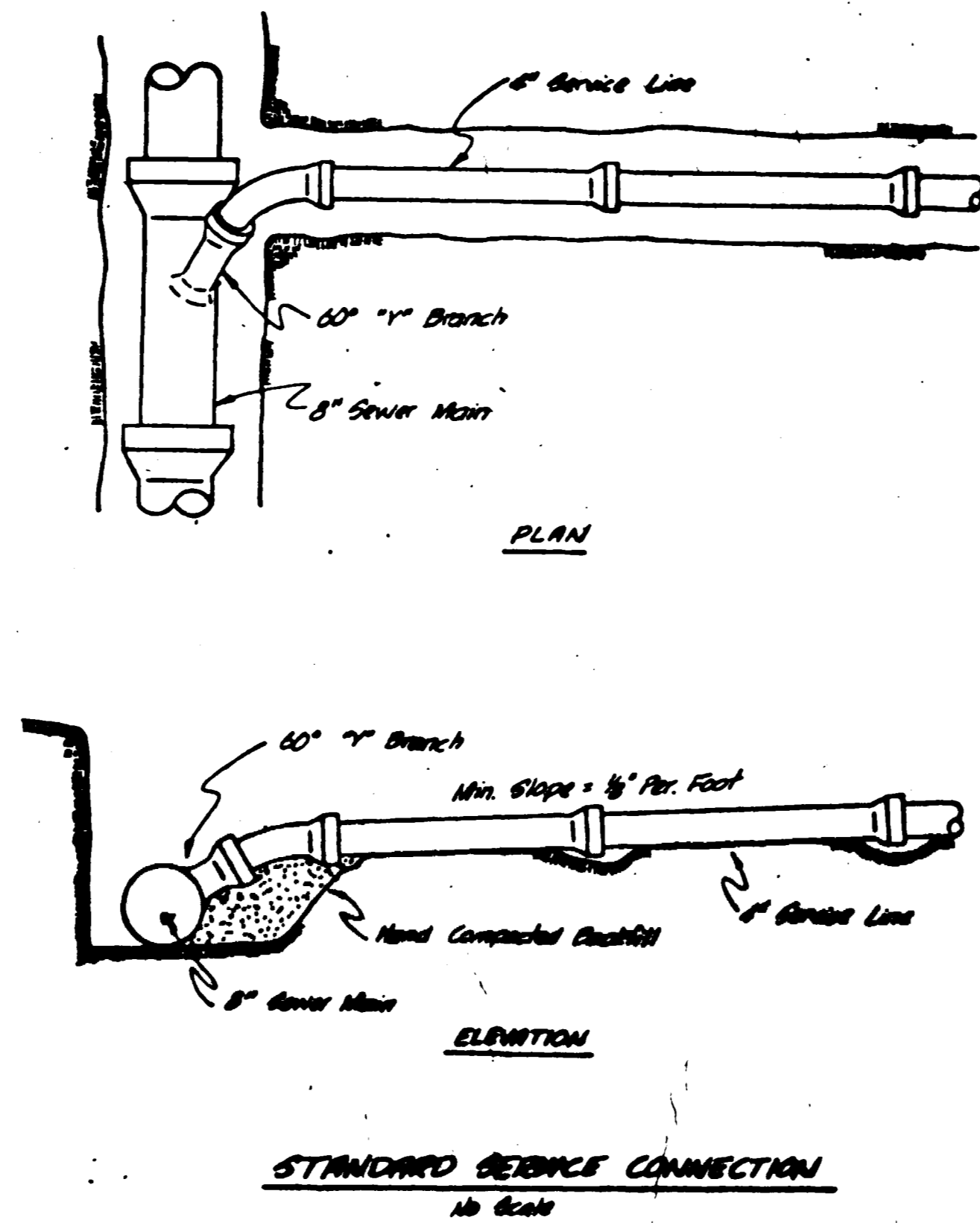
BENCH MARK: BRASS CAP
ELEV. 4719.29



- GENERAL NOTES:
1. TOP OF ECCENTRIC CONE TO BE SET AT TOP OF SUBGRADE (STREET CONTRACTOR TO SET RIMS TO FINISHED GRADE OF STREET)
 2. ALL CONSTRUCTION TO BE DONE IN ACCORDANCE WITH THE CENTRAL GRAND VALLEY SANITATION DISTRICT SPECIFICATIONS.
 3. WATER AND SEWER SERVICES WILL BE A MINIMUM OF 10' APART WITH THE WATER SERVICE ON THE UPHILL SIDE OF THE SEWER SERVICE.

QUANTITIES:

- 14 STANDARD MANHOLES
- 3912 LF 8" SANITARY SEWER
- 49 4" SERVICE LINES



NOTE:
This is to certify that the system infiltration does not exceed 200 gallons per inch diameter per 100' of length per day.

APPROVED _____ DATE _____
CENTRAL GRAND VALLEY SAN. DIST
AS BUILT DRAWINGS

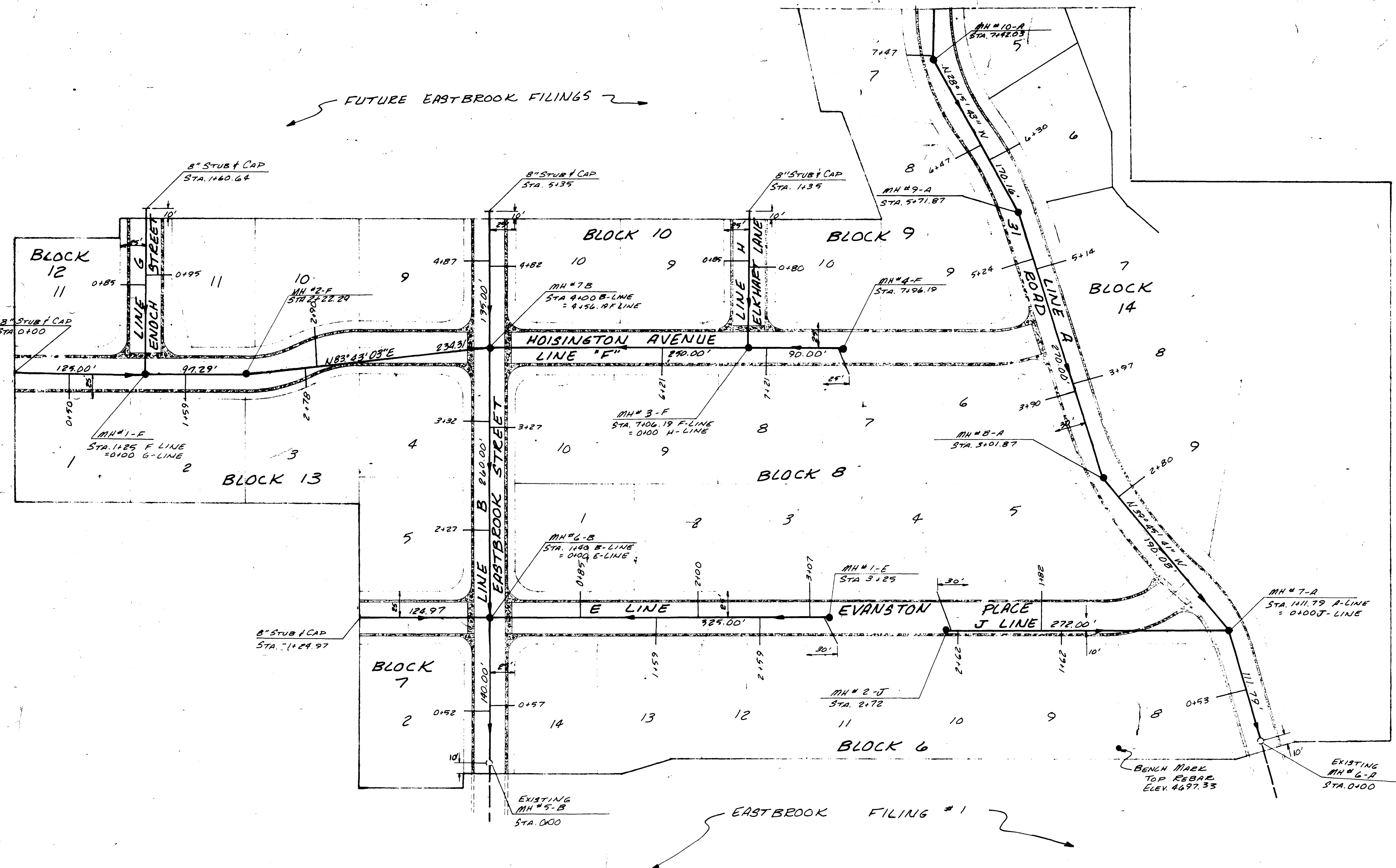
CHECKED
DATE
MARCH 1979
SCALE
1" = 50'

REVISIONS	BY

PARAGON ENGINEERING, INC.
P.O. Box 2872
Grand Junction, Colorado 81501 (937) 243-3846

EASTBROOK SUBDIVISION FILING NO. TWO
MESA COUNTY, COLORADO
SANITARY SEWER PLAN

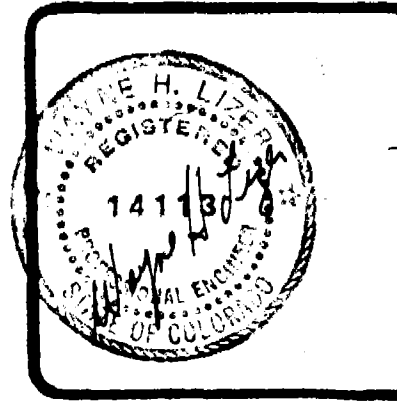
SHEET
1
OF 4 SHEETS



CHECKED
Wayne H. Hays
 DATE
 March 1979
 SCALE
 1" = 50'

REVISIONS	BY
April 30, 79	LS

PARAGON ENGINEERING, INC.
 P.O. Box 2872
 Grand Junction, Colorado 81501 (303) 243-8868



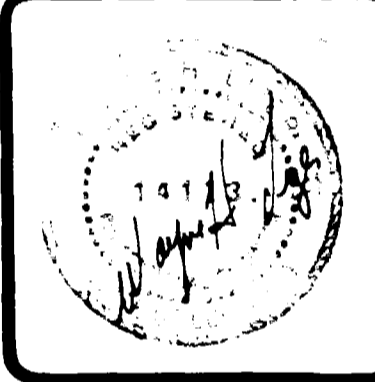
EASTBROOK SUBDIVISION FILING NO. TWO
 MESA COUNTY, COLORADO
 SANITARY SEWER PLAN

SHEET
 2
 OF 4 SHEETS

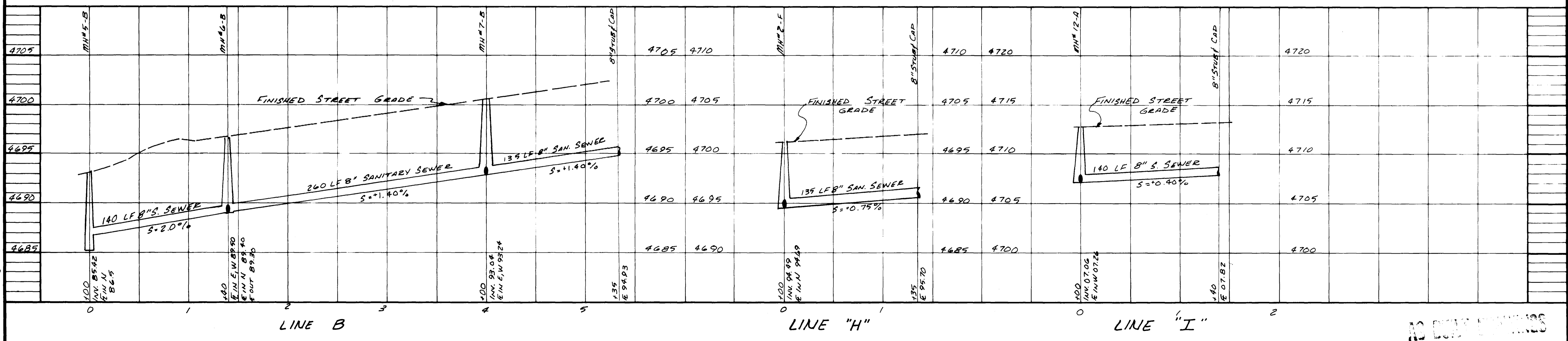
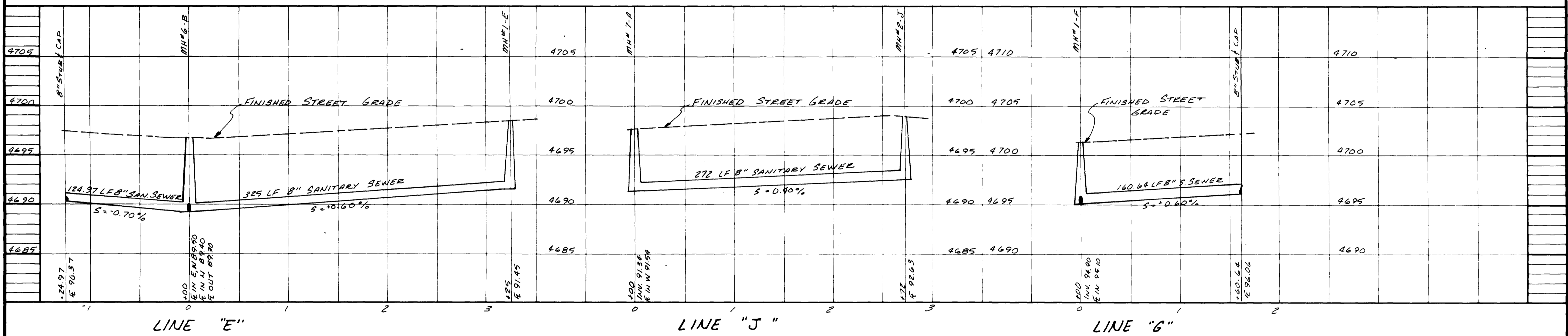
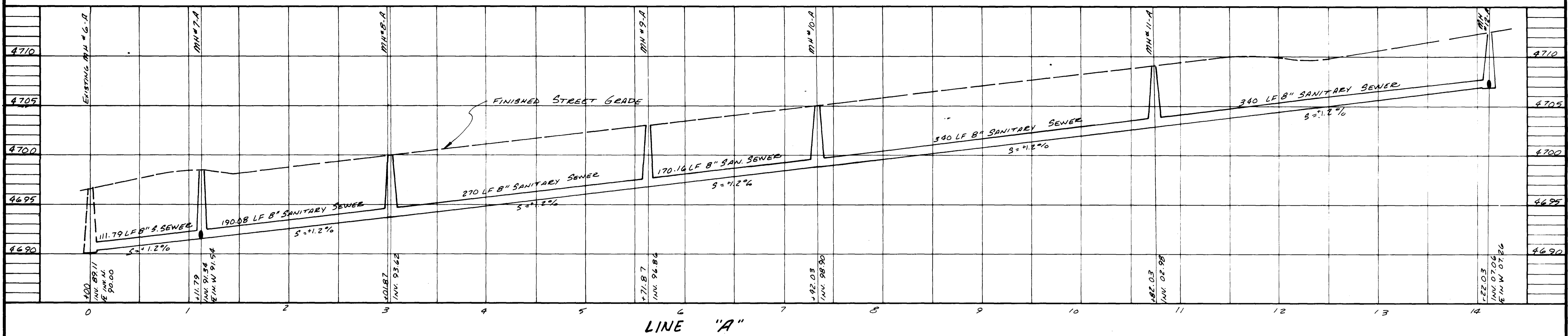
AS BUILT DRAWINGS

REVISIONS	BY

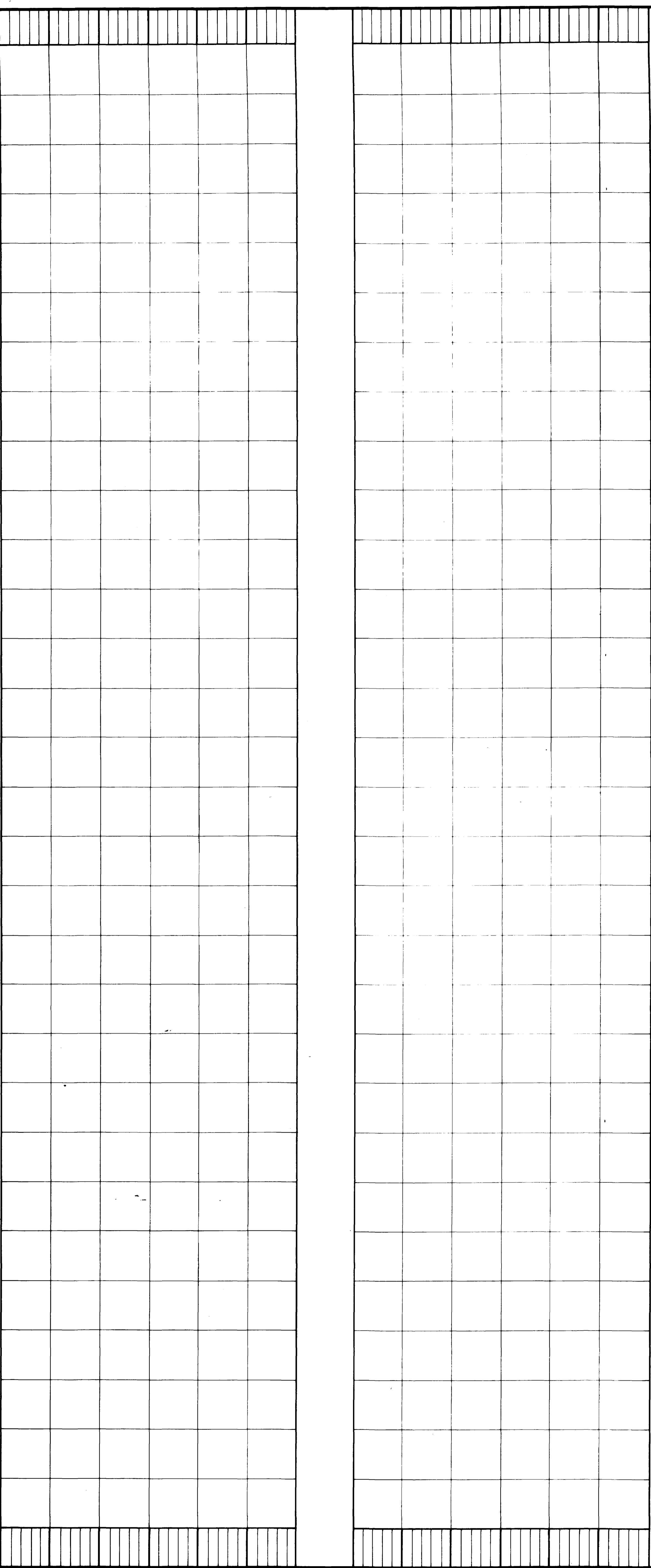
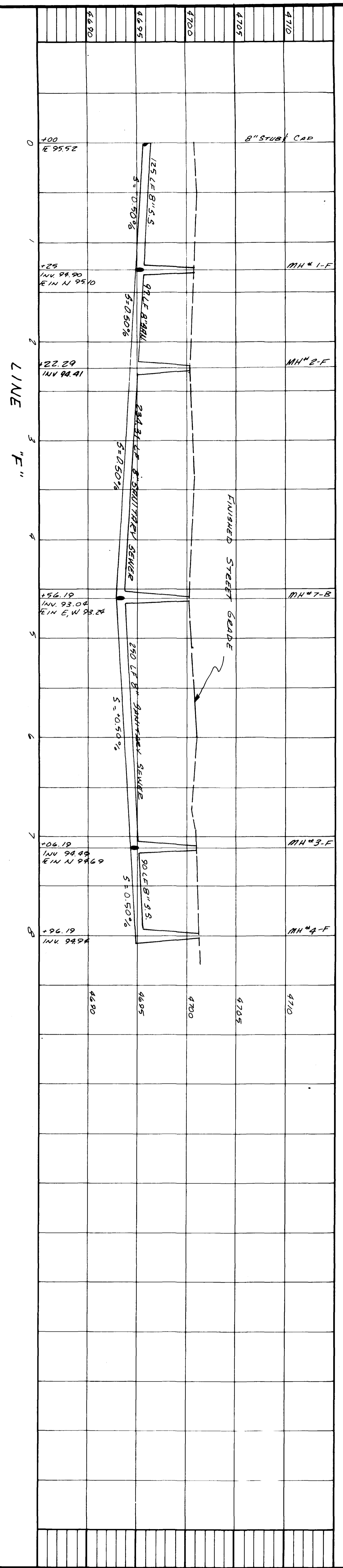
PARAGON ENGINEERING, INC.
 P.O. Box 2872
 Grand Junction, Colorado 81501 (303) 243-9886



EASTBROOK SUBDIVISION FILING NO. TWO
 MESA COUNTY, COLORADO
 SANITARY SEWER PROFILES

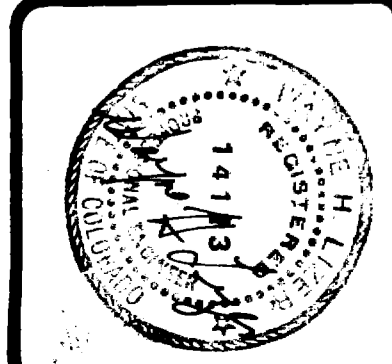


AD COPY PROFILES



NO DATA FOR THIS SHEET

EASTBROOK SUBDIVISION FILING NO. TWO
 MESA COUNTY, COLORADO
 SANITARY SEWER PROFILES



PARAGON ENGINEERING, INC.
 P.O. Box 2872
 Grand Junction, Colorado 81501 (303) 243-8966

REVISIONS	BY
APRIL 30, 19	LS

CHECKED
 DATE
 1979
 1" = 50'
 1" = 5'

SHEET
 4
 OF
 4
 SHEETS