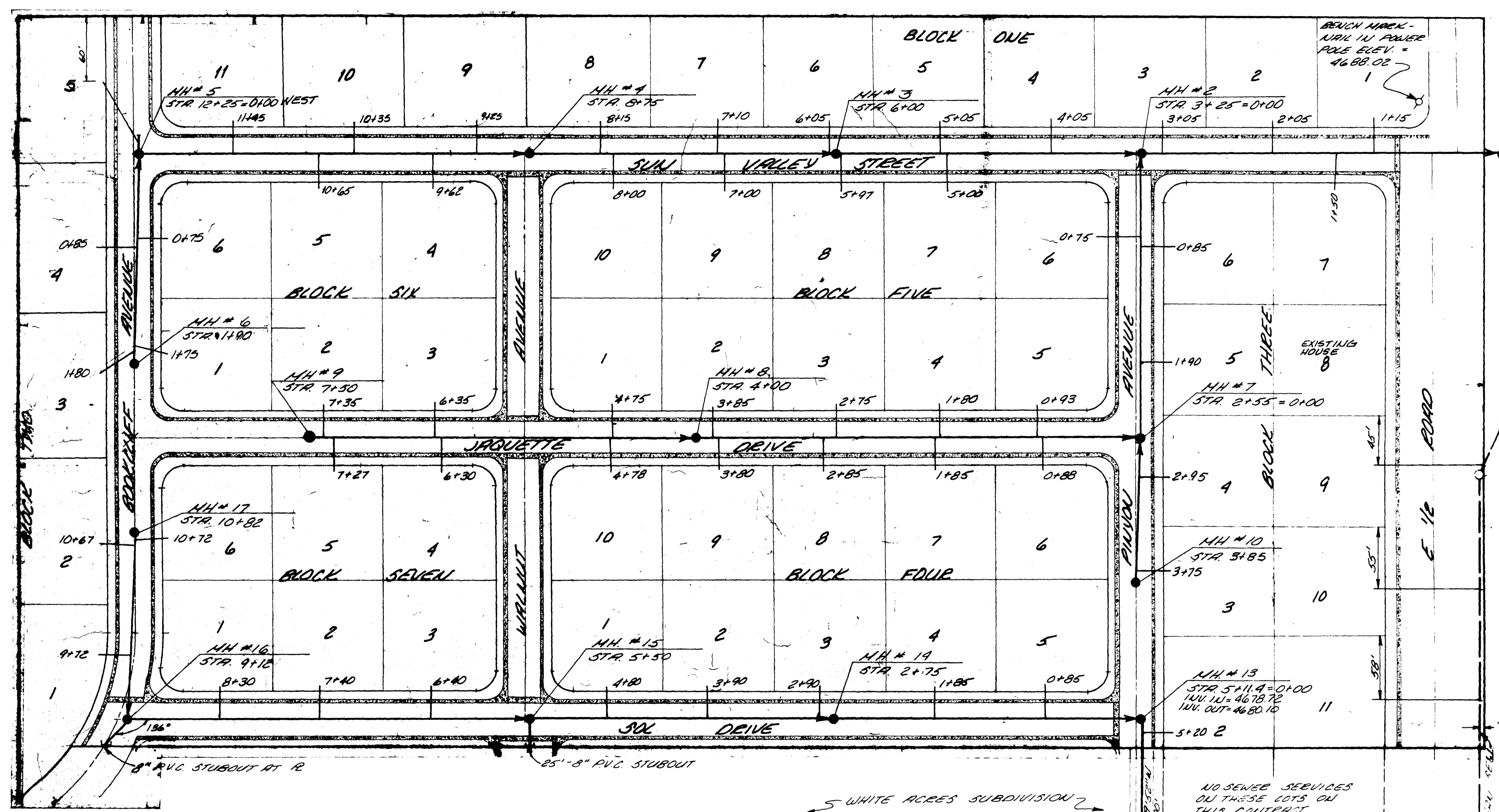


EXIST. M.H.
STA 6+92.50

CHECKED	
DATE	
NOV. 1978	
SCALE	
1" = 50'	
REVISIONS	BY
APRIL 1979	LS



M.H. #1
STA 0+00
INV. IN = 4677.96
INV. OUT = 4677.76
EIM ELEV =

EXIST. M.H.
STA 2+94.00
INV. IN = 4676.07
INV. OUT = 4676.04
EIM ELEV = 4684.80

EXIST. M.H.
STA 0+00
INV. IN = 4670.20
INV. OUT = 4671.86
EIM ELEV =

NO SEWER SERVICES
ON THESE LOTS ON
THIS CONTRACT

M.H. #12
STA 3+04.40
INV. IN = 4675.97
INV. OUT = 4675.72

SEWAGE QUANTITIES
16 STANDARD MANHOLES (6-8 FT. DEPTH)
4218 L.F. 8" SANITARY SEWER LINE
58 SERVICE CONNECTIONS
2060 L.F. 4" SANITARY SEWER LINE
6560 L.F. TRENCH CONSTRUCTION
720 S.F. ASPHALT REPLACEMENT

- NOTES:**
1. TOP OF ECCENTRIC CONE TO BE SET AT TOP OF SUBGRADE (STREET CONTRACTOR TO SET RIMS TO FINISH GRADE OF STREET)
 2. ALL CONSTRUCTION TO BE DONE IN ACCORDANCE WITH THE CENTRAL GRAND VALLEY SANITATION DISTRICT SPECIFICATIONS.
 3. ALL CONSTRUCTION TO BE DONE IN ACCORDANCE WITH THE COCO. DEPARTMENT OF HEALTH SPECIFICATIONS.
 4. CONTRACTOR IS RESPONSIBLE FOR LOCATING ALL BURIED UTILITIES AND PROTECTING SAME.
 5. IF VERTICAL AND HORIZONTAL CLEARANCES ARE LESS THAN STATE MINIMUMS, THEN CONCRETE ENCASUREMENT MAY BE REQUIRED ON SEWER LINES WHERE WATER MAINS ARE LESS THAN PROXIMITY REQUIREMENTS.
 6. MANHOLES, UNLESS OTHERWISE NOTED, ARE TO BE LOCATED 5' (H.) WEST OR 5' (H.) SOUTH OF STREET INTERSECTIONS.
 7. ALL SEWER SERVICES TO EXTEND 6' BEYOND PROPERTY LINE.

NOTE:
This is to certify that the system infiltration does not exceed 200 gallons per inch diameter per mile of length per day.

PARAGON ENGINEERING, INC.
P.O. Box 2872
Grand Junction, Colorado 81501 (970) 243-3968

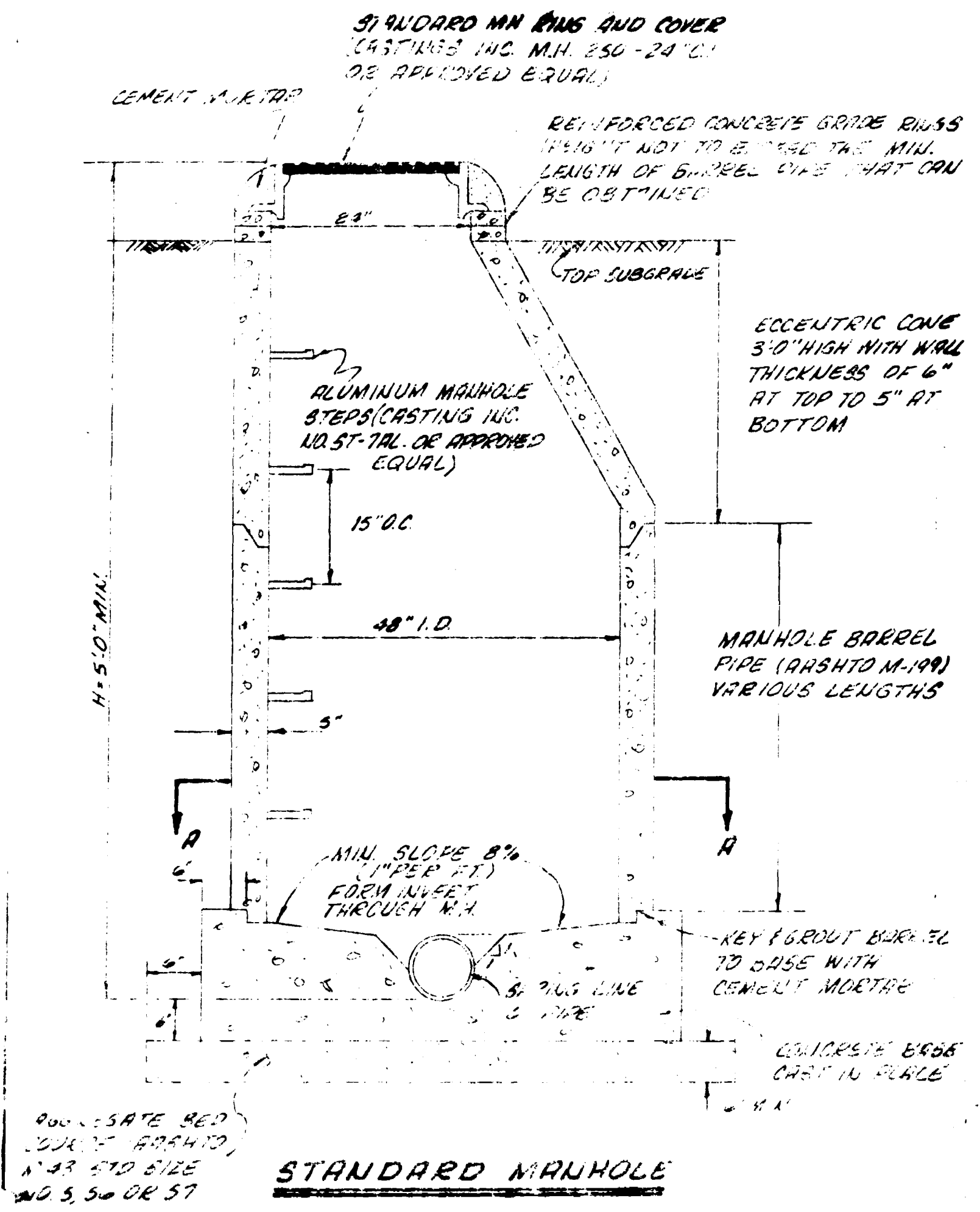
JARQUETTE SUBDIVISION
MESA COUNTY, COLORADO
SANITARY SEWER PLAN

REVISIONS	BY

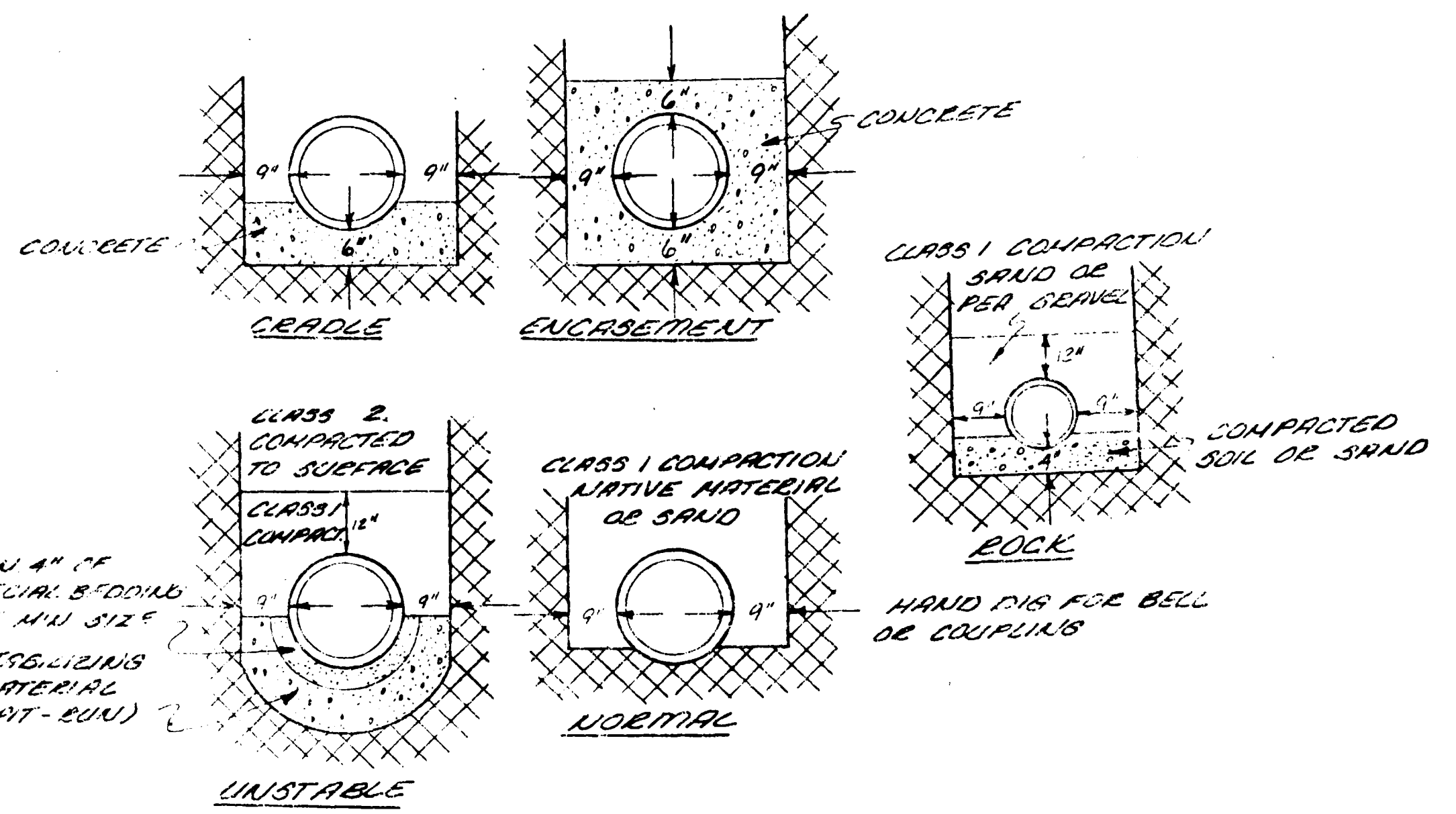
PARAGON ENGINEERING, INC.
 P.O. Box 2072
 Grand Junction, Colorado 81501 (303) 243-8868



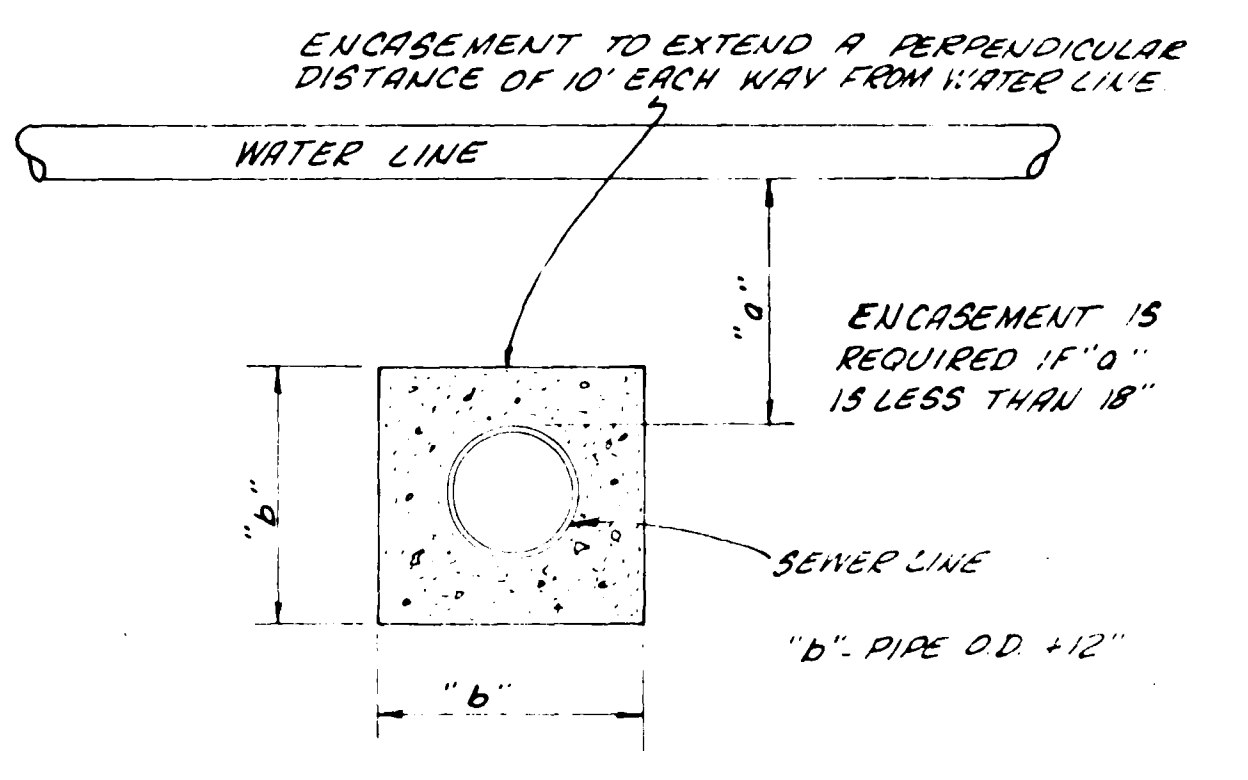
JARQUETTE SUBDIVISION
 MESA COUNTY COLORADO
 SANITARY SEWER DETAILS



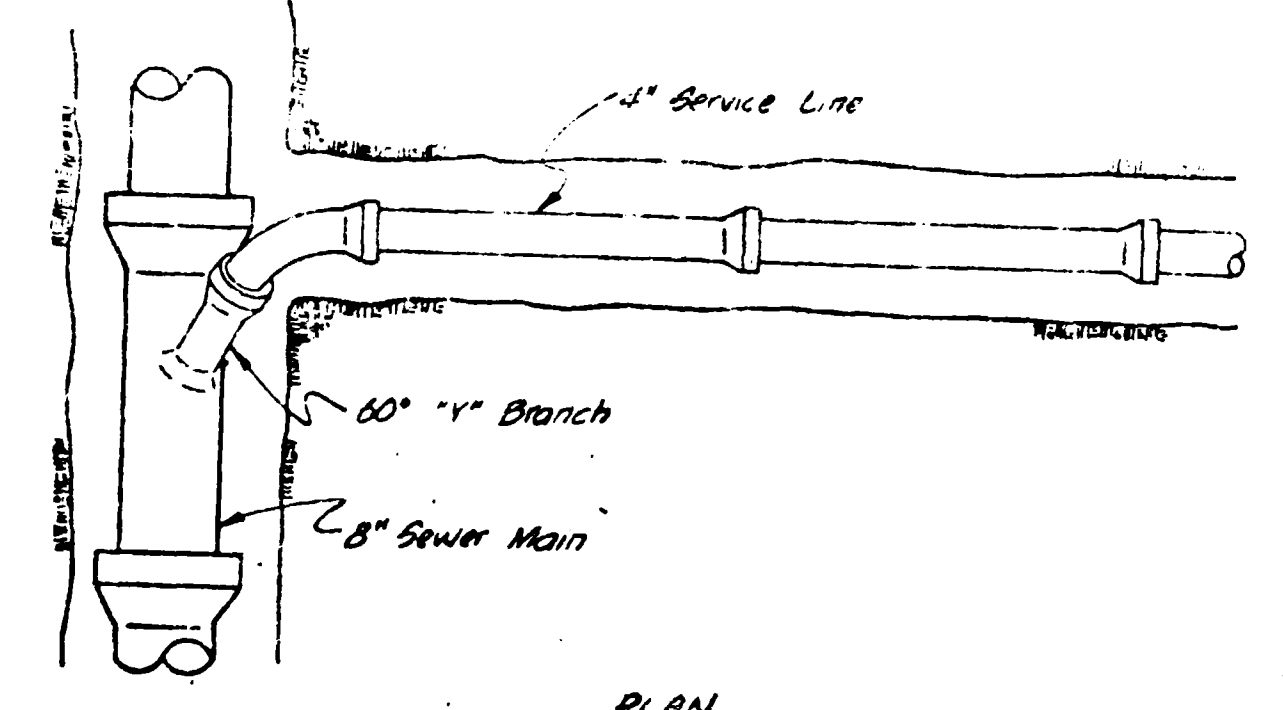
STANDARD MANHOLE



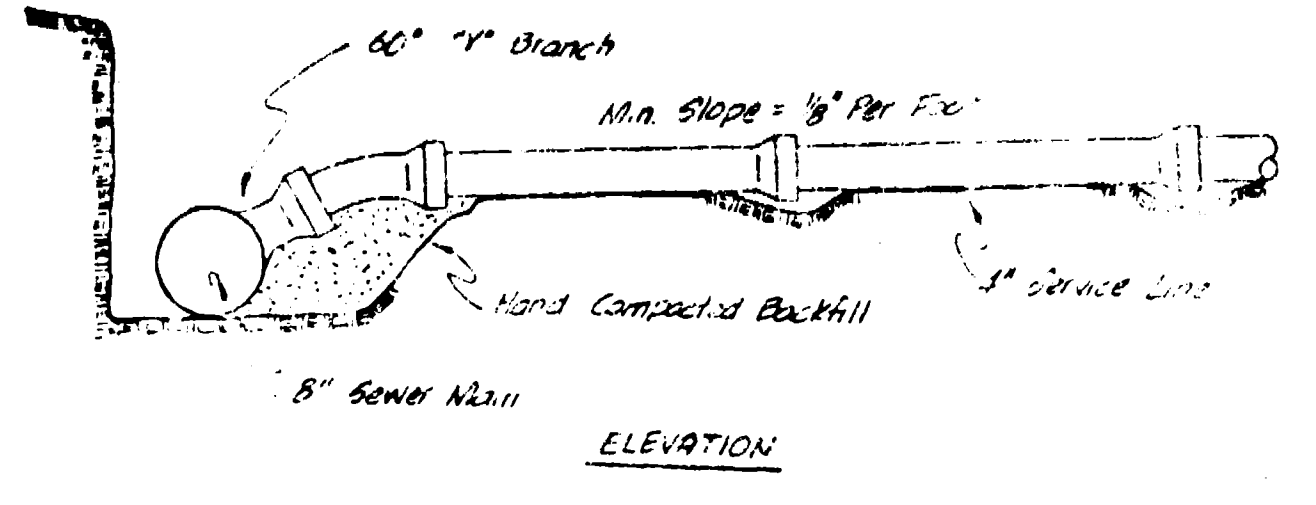
TYPICAL BEDDING DETAIL
 NO SCALE



SEWER LINE ENCASEMENT DETAIL

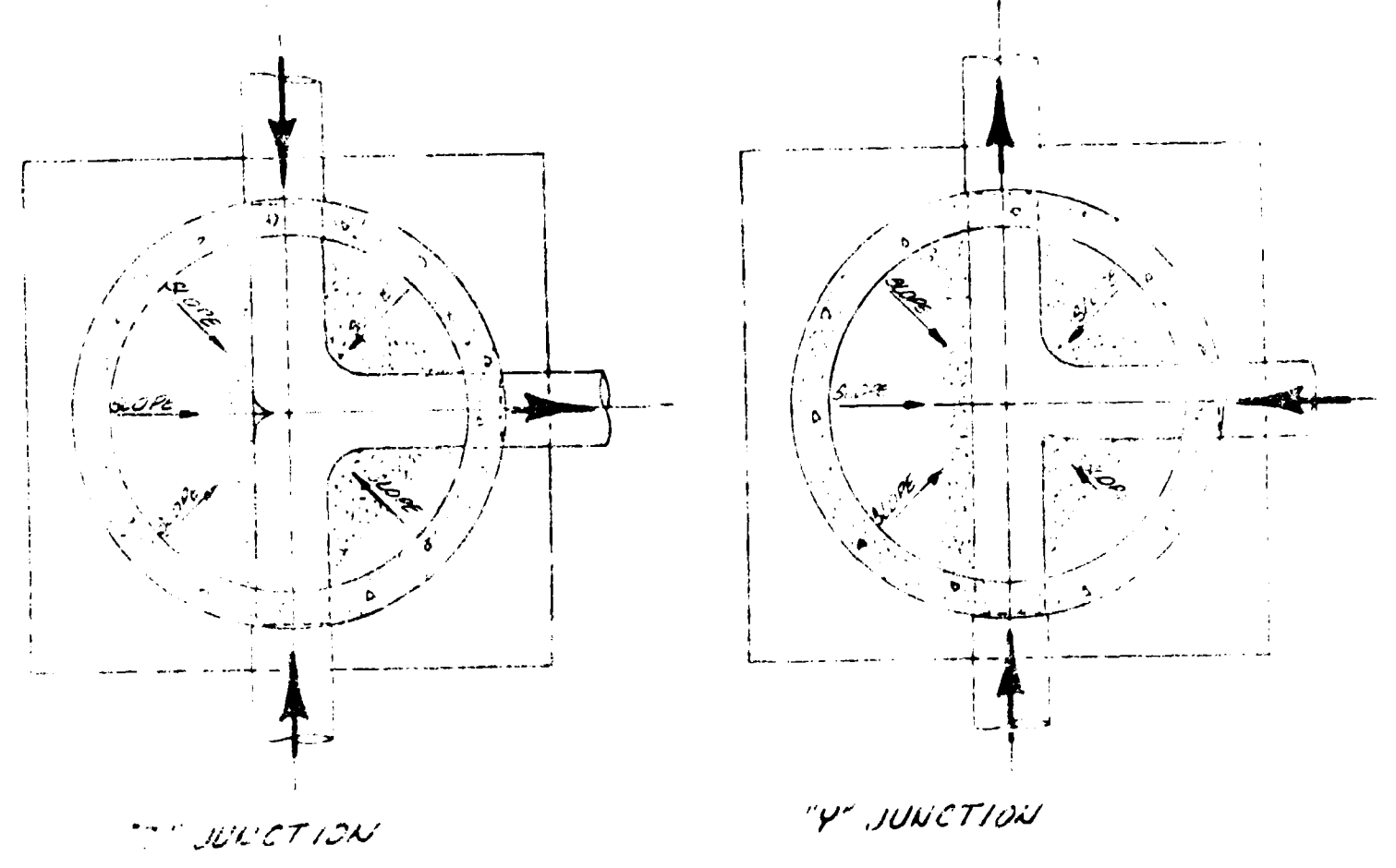


PLAN

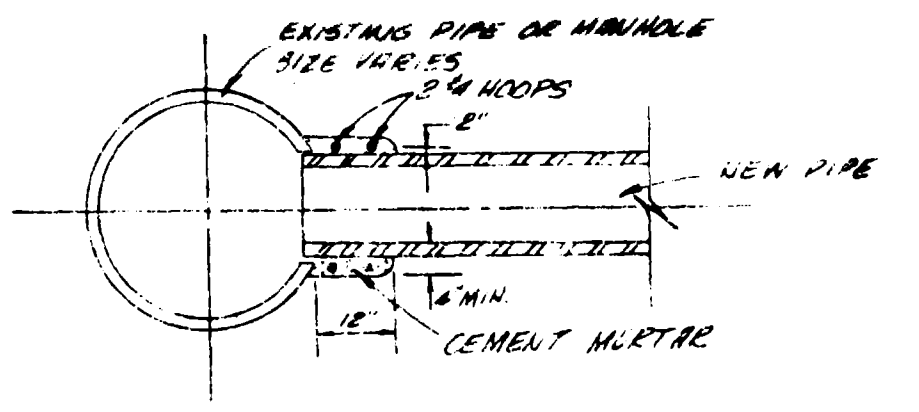


ELEVATION

STANDARD SERVICE CONNECTION
 1/8" PER FT.



SECTION "A"-A"



CONNECTION TO EXISTING MANHOLE OR PIPE



