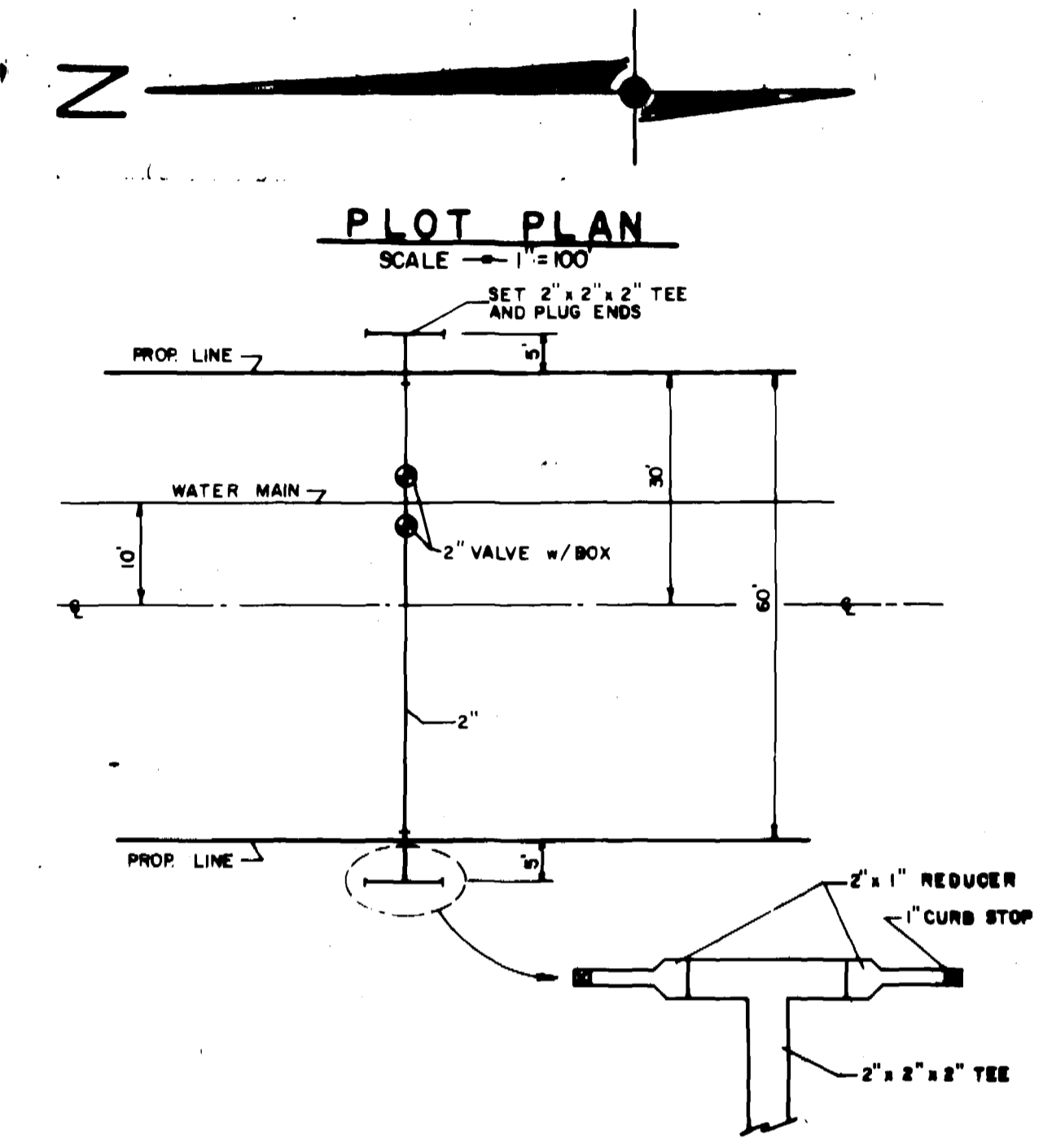


**WATER QUANTITIES**  
 6" A.C. - 2110 Linear feet  
 8" A.C. - 2910 Linear feet  
 8" Valves w/Box - 5 ea.  
 8" Valves w/Box - 7 ea.  
 Fire Hydrants w/Valve and Box - 13 ea.  
 2" Services - 28 ea.  
 Water line to be located 13 feet off centerline

**SEWER QUANTITIES**  
 4007 Linear feet, 8" PVC  
 710 Linear feet, 6" PVC Force Main (C.I. 160)  
 16 Manholes  
 48 4" Services (1gt/ea. = 20 ft.)  
 Sewer Services to be located 10 feet from Water Services

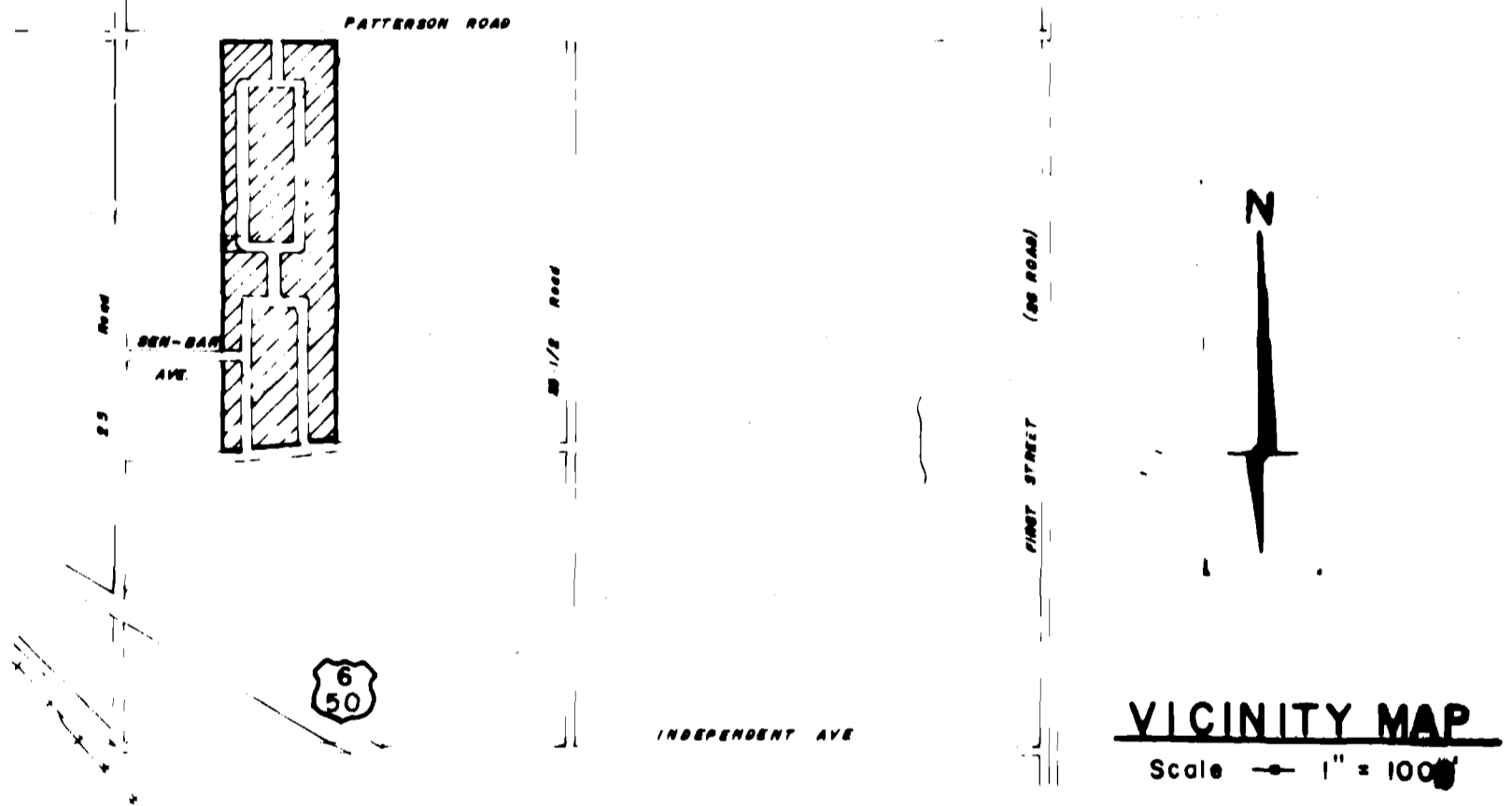


**WESLO COMMERCIAL SUBDIVISION**

NOTE: See plans by Richard Atkins for gravity and force main Sewer line extensions.

- NOTES**
- No lateral service shall be installed to any lot that has not been platted and recorded.
  - B.M. Elev. 4564.06. B.M. Elevation stamped on Mesa County Brass Cap at the intersection of 25 Road and F Road NW Corner, Section 10, T1S, R1W, Ute PM  
 b. B.M. Elevation of 4572.05 on hinge nail in power pole: SE Corner Western Slope Gas on Independent Ave.
  - No road cuts will be permitted after asphalt has been placed on the streets.
  - All lot lateral stub-outs located within road right of way will be placed prior to road construction.
  - Service laterals will be constructed following lot - block sales. The following Specification are made a part of this contract.
    - Most current Road Specifications.
    - Most current State Dept. of Health Specifications.
    - See Sewer Specification prepared by Armstrong Engineers & Assoc. for further information.
    - Contractor is responsible for locating all buried utilities and protecting same.
    - If vertical and horizontal clearances are less than State minimums, then concrete encasement may be required on sewer lines where water mains are less than proximity requirements.
    - Final Manhole rim elevations are to be adjusted to final grade by Paving Contractor.
    - Existing 4 inch force main will be exposed at the existing Paradise Valley Mobile Home Park Lift Station prior to construction of the 6" Force Main in Westgate Park.
    - (T.B.) Test Boring were taken on 7/30/76 and explained in a soils report completed by Armstrong Engineers & Assoc. with a Job No. of 96845

- LEGEND**
- Manhole
  - Gate Valves
  - ▽ Fire Hydrant



**SEWER IMPROVEMENT PLANS**

APPROVED \_\_\_\_\_ DATE \_\_\_\_\_  
 MESA COUNTY HEALTH DEPARTMENT

APPROVED \_\_\_\_\_ DATE \_\_\_\_\_  
 COLORADO DEPARTMENT OF HEALTH

APPROVED \_\_\_\_\_ DATE \_\_\_\_\_  
 MESA COUNTY ROAD DEPARTMENT

APPROVED \_\_\_\_\_ DATE \_\_\_\_\_  
 CITY OF GRAND JUNCTION WASTE WATER TREATMENT SYSTEM

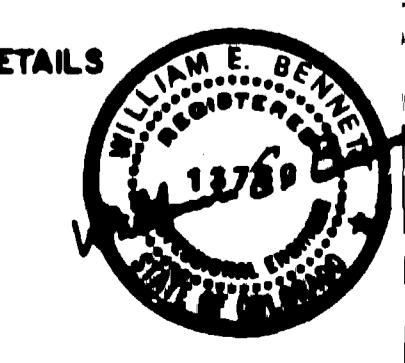
APPROVED \_\_\_\_\_ DATE \_\_\_\_\_  
 MESA COUNTY PLANNING DEPARTMENT

APPROVED \_\_\_\_\_ DATE \_\_\_\_\_  
 OWNER

- INDEX**
- SHEET NO. 1 — PLOT PLAN
  - SHEET NO. 2 — PROFILE (NORTH & SOUTH COMMERCIAL DR.)
  - SHEET NO. 3 — PROFILE (NORTH & SOUTH WESTGATE)
  - SHEET NO. 4 — STANDARD SEWER DETAILS

APPROVED BY:  
 EDWARD A. ARMSTRONG

DESIGNED BY:  
 William E. Bennett  
 WILLIAM E. BENNETT

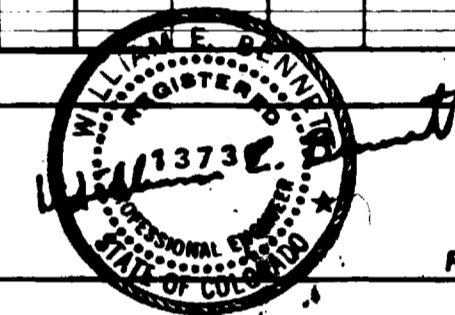
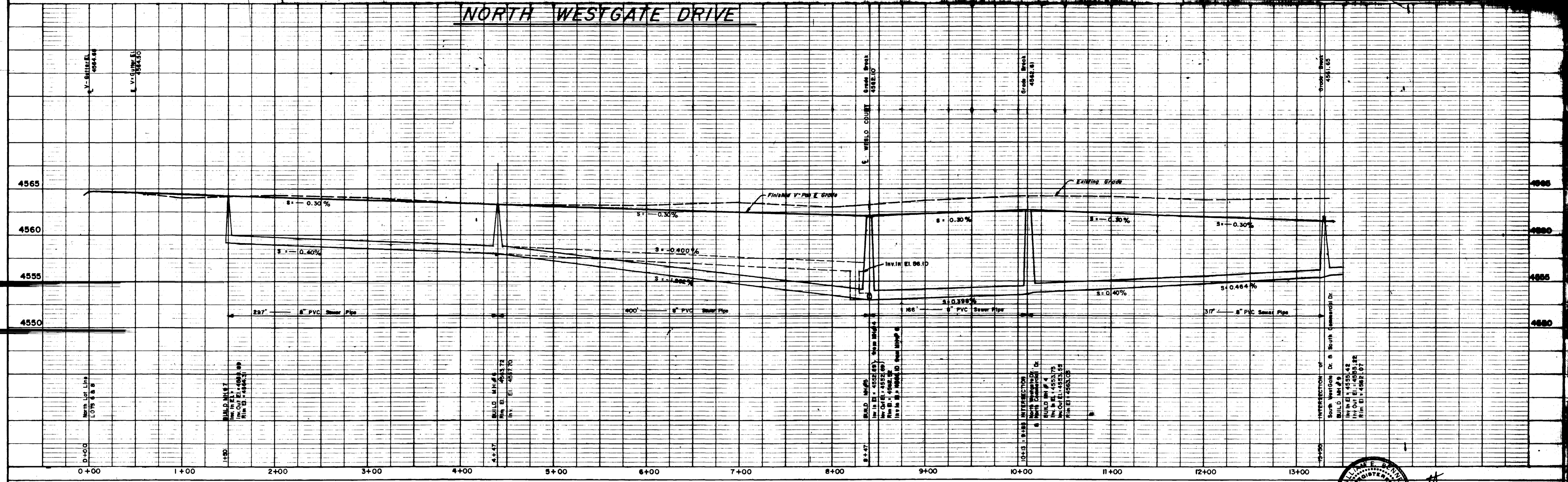


REVISOR 9/9/76

**ARMSTRONG ENGINEERS**  
 ENGINEERING - SURVEYING  
 CONCRETE & SOILS TESTING

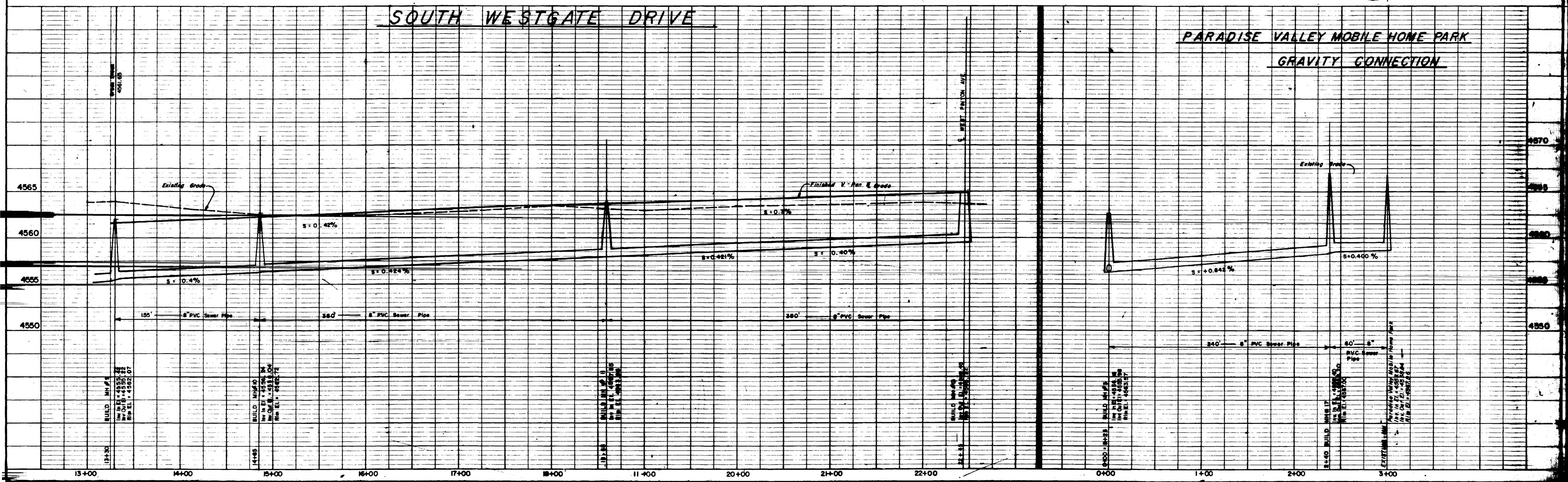
WESTGATE PARK  
 SEWER PLANS  
 SHEET NO. 1

# NORTH WESTGATE DRIVE



Revised 9/5/78

# SOUTH WESTGATE DRIVE



## PARADISE VALLEY MOBILE HOME PARK GRAVITY CONNECTION

AS CONSTRUCTED

LOCATION  
WESTGATE PARK

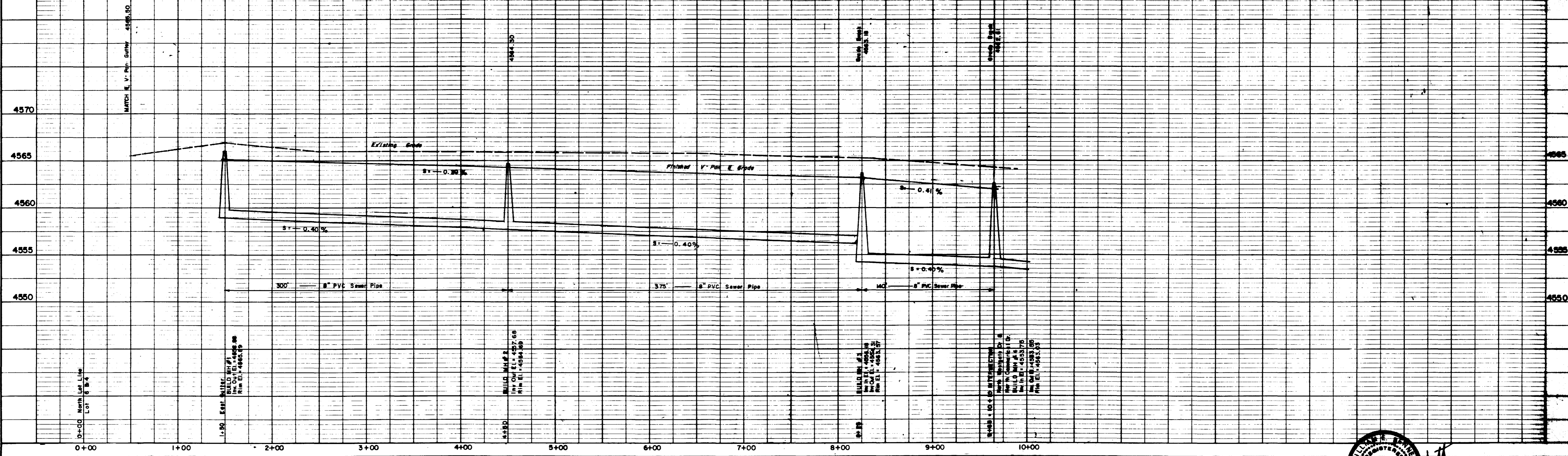
TITLE  
SEWER PROFILE

SCALE  
1" = 30'

ARMSTRONG ENGINEERS & ASSOC.  
861 ROOD AVE.  
GRAND JUNCTION, COLO. 81501 Phone 245-3881

Sheet 2  
4 Sh

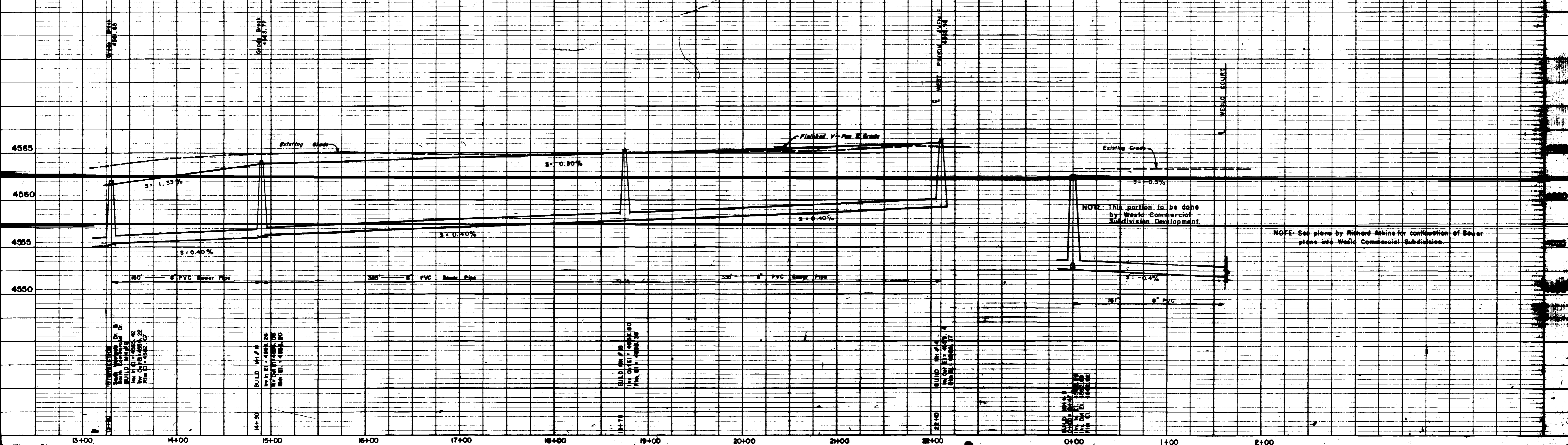
# NORTH COMMERCIAL DRIVE



Revised 9/5/76

# SOUTH COMMERCIAL DRIVE

# WESLO COURT



NOTE: This portion to be done by West Commercial Subdivision Development.

NOTE: See plans by Richard Atkins for continuation of Sewer plans into West Commercial Subdivision.

AS CONSTRUCTED

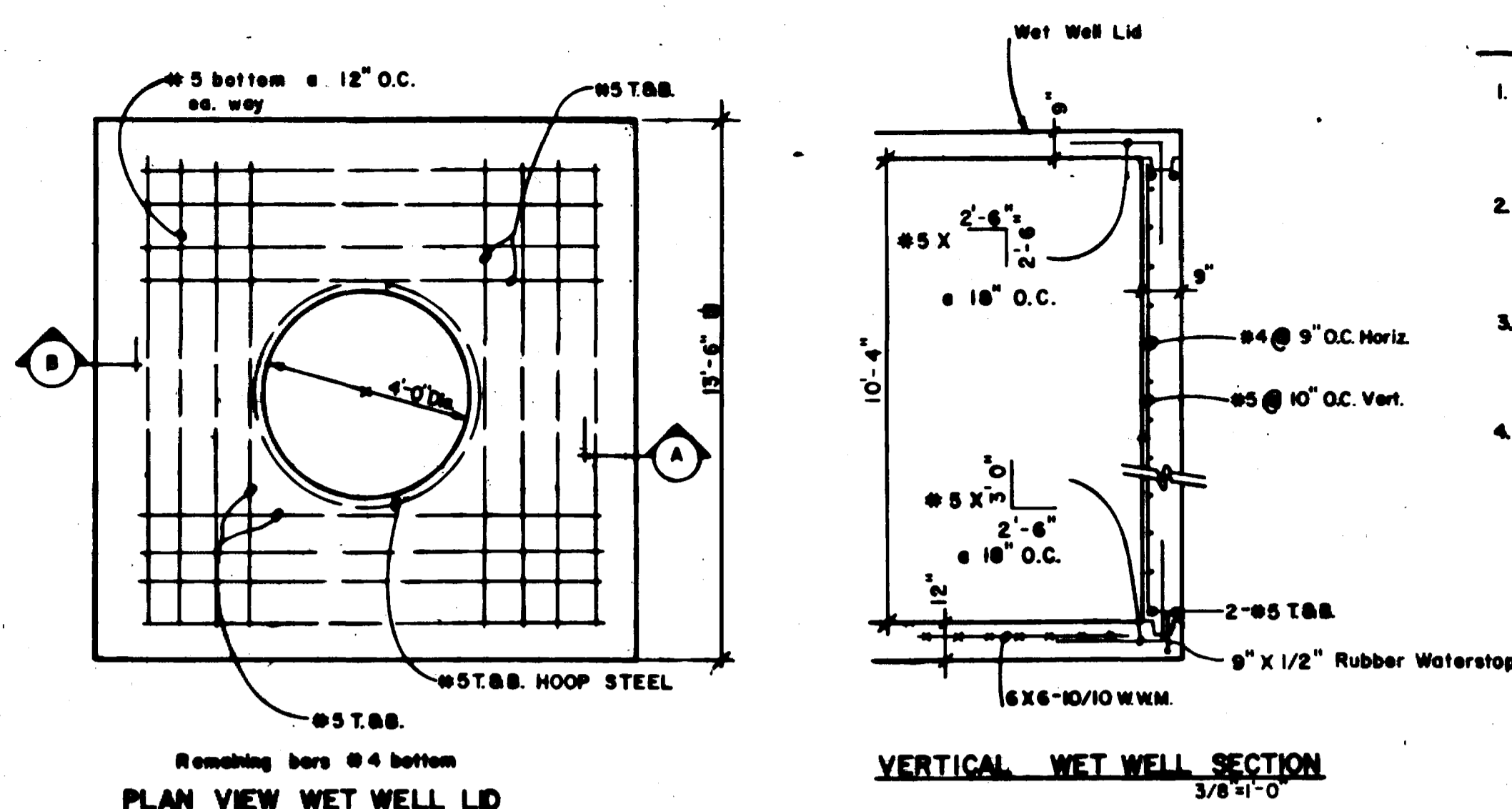
**LOCATION**  
WESTGATE PARK

**TITLE**  
SEWER PROFILE

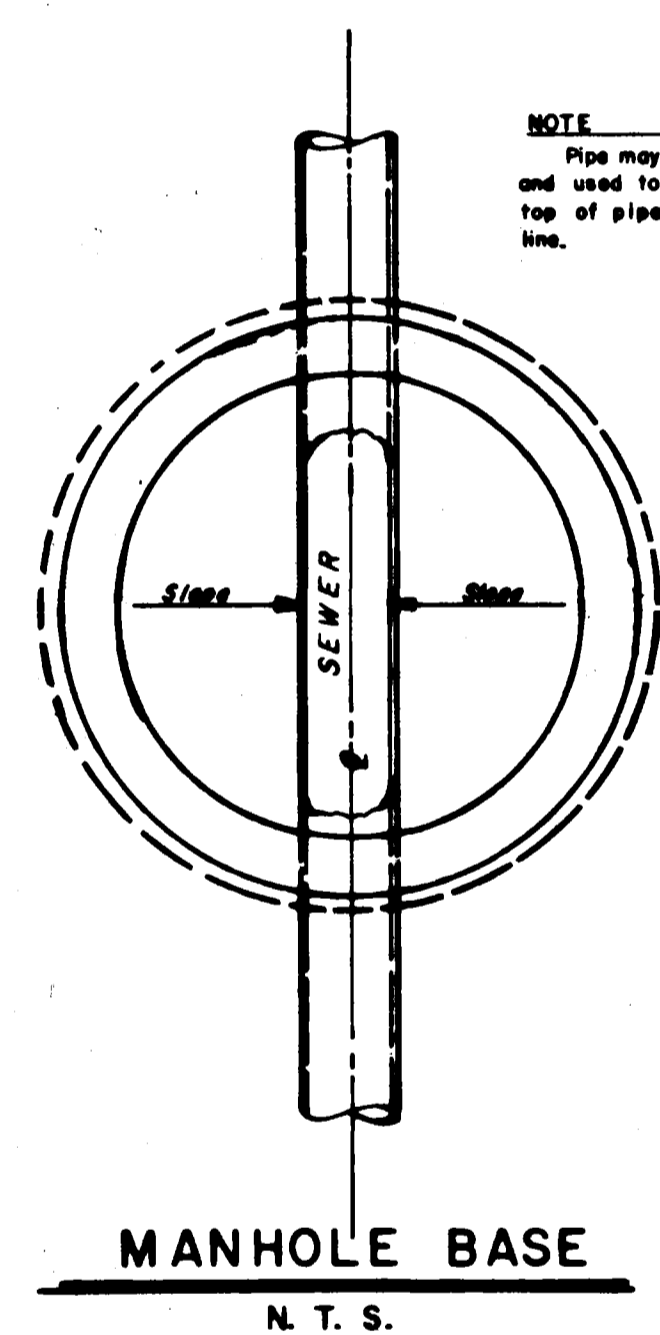
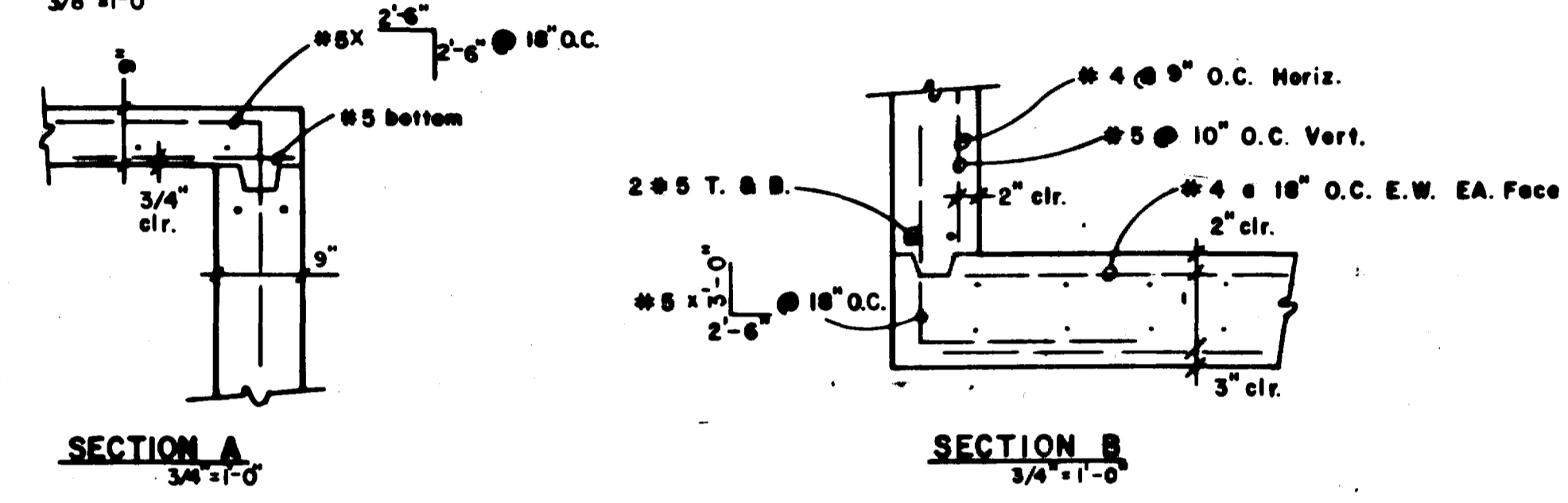
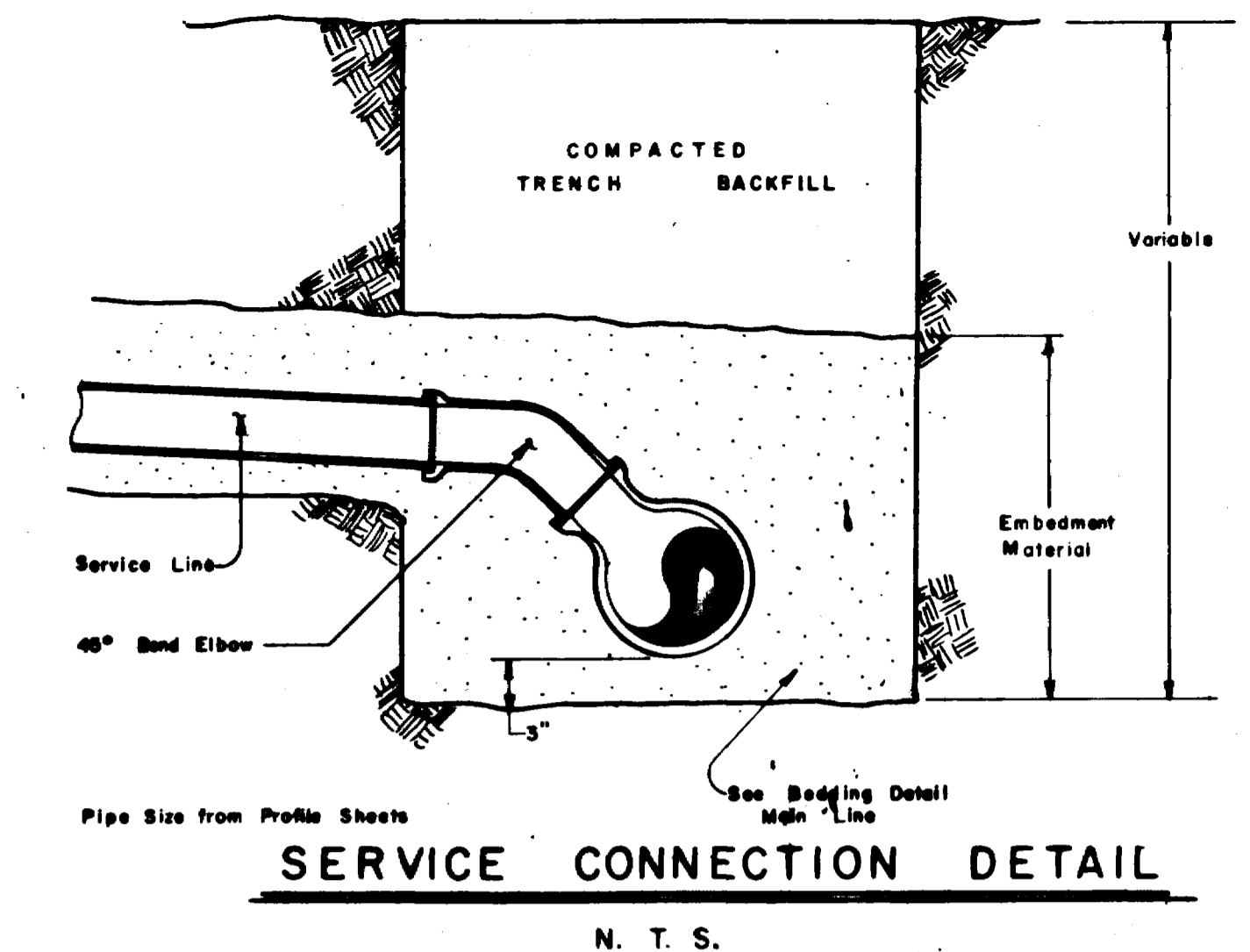
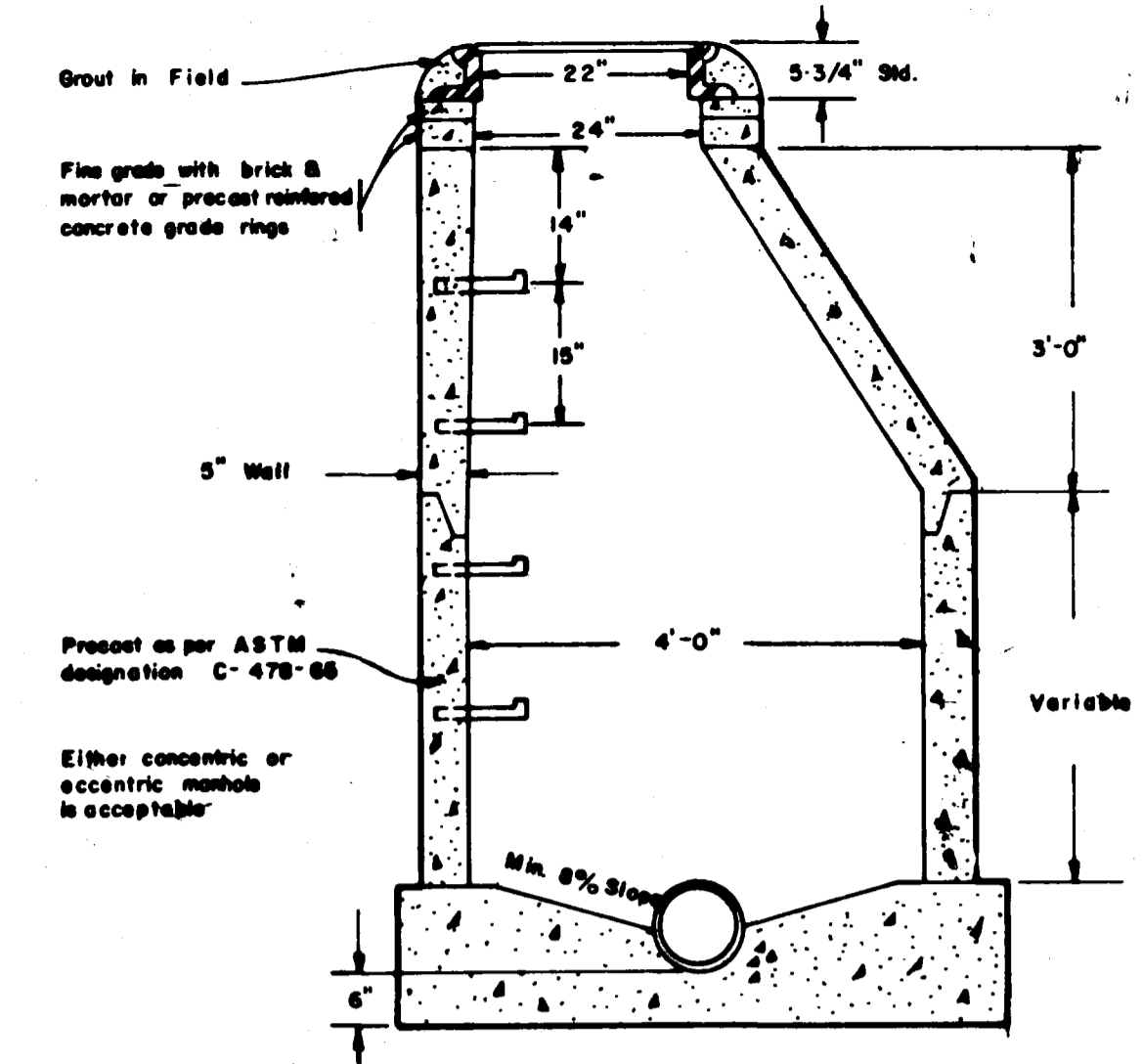
**SCALE**  
Horizontal: 1" = 50'  
Vertical: 1" = 5'

**ARMSTRONG ENGINEERS & ASSOC**  
861 ROOD AVE.  
GRAND JUNCTION, COLO. 81501 Phone 245-3861

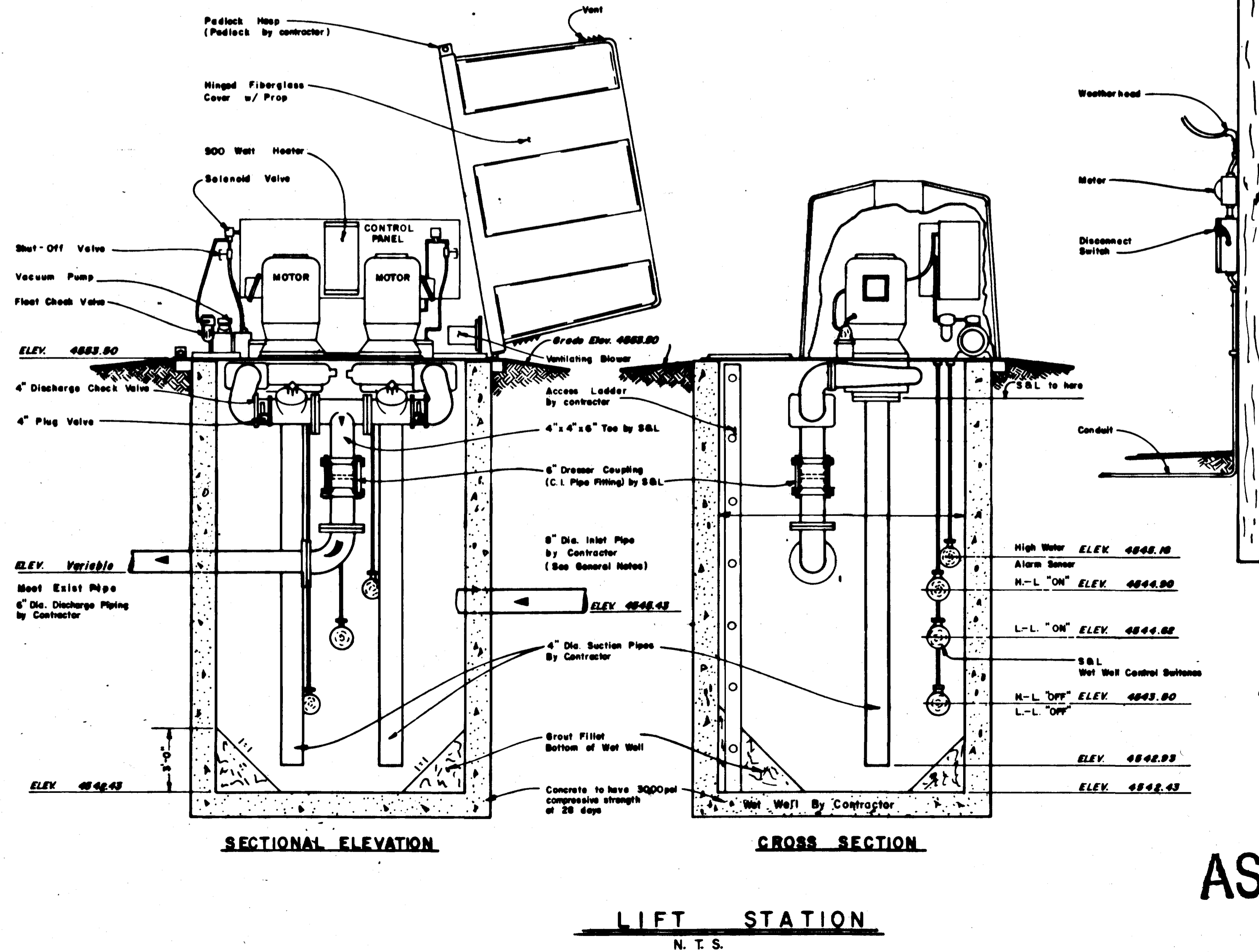
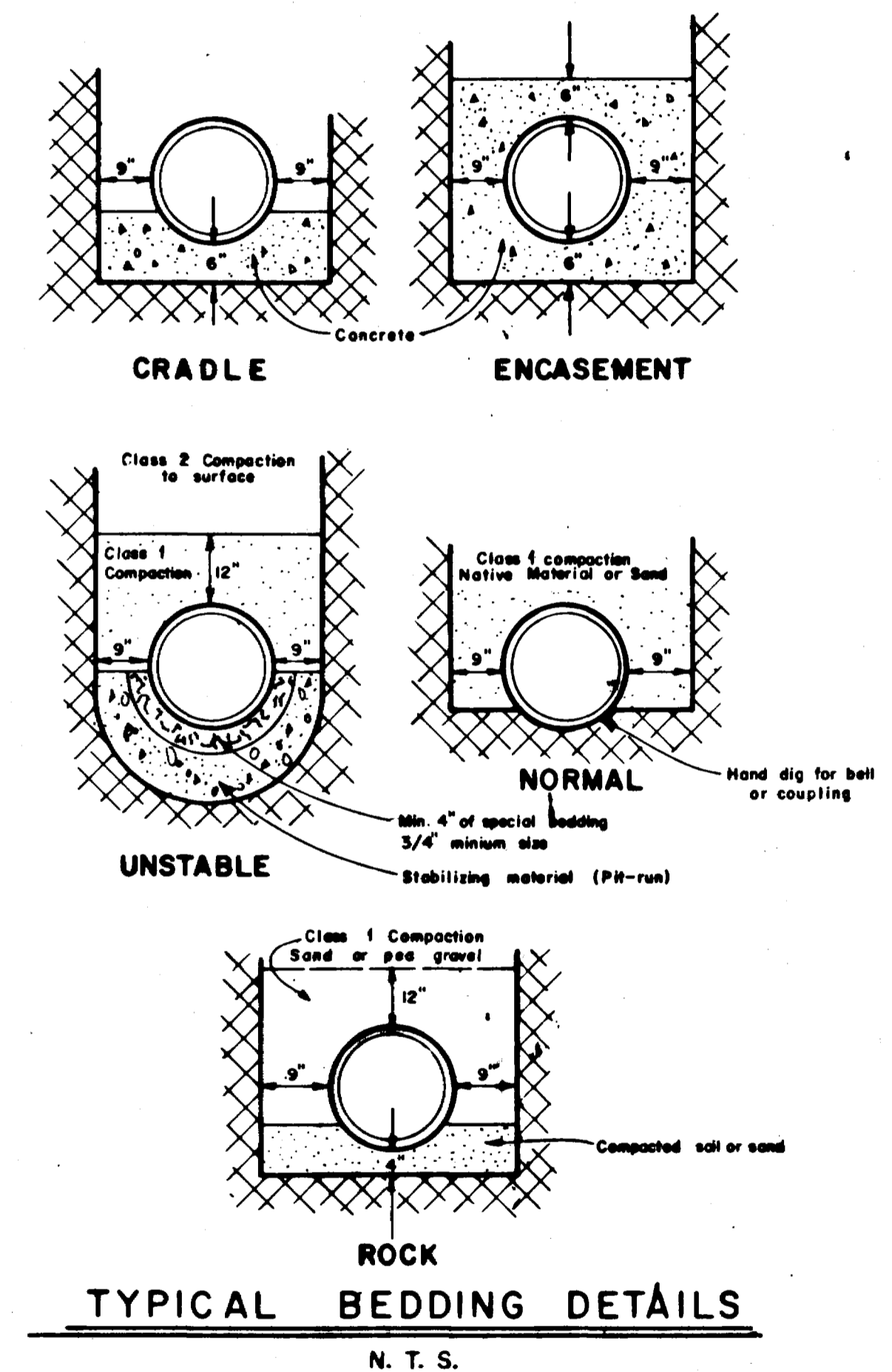
Sheet **3** of **4**  
JOB NO. **77**



- GENERAL NOTES**
1. The suction pipe furnished by the contractor should have 150 lb. steel flange or 125 lb. cast iron flange on the station.
  2. Telemetric Alarm to Grand Junction Sewage Treatment Plant to be furnished and installed by contractor.
  3. If thrust blocks are necessary see Thrust Block Construction Standard Details in Standard Specifications for this project.
  4. Manholes and wetwell to be bedded in 4-6 inches of 3/4" minus roadbase material and compacted to 85% of maximum density in accordance with AASHTO T-180.



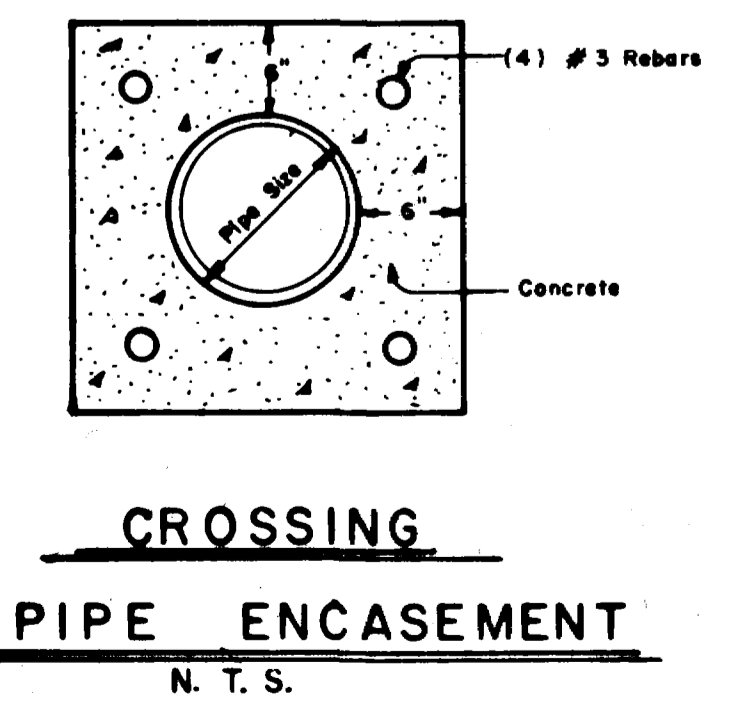
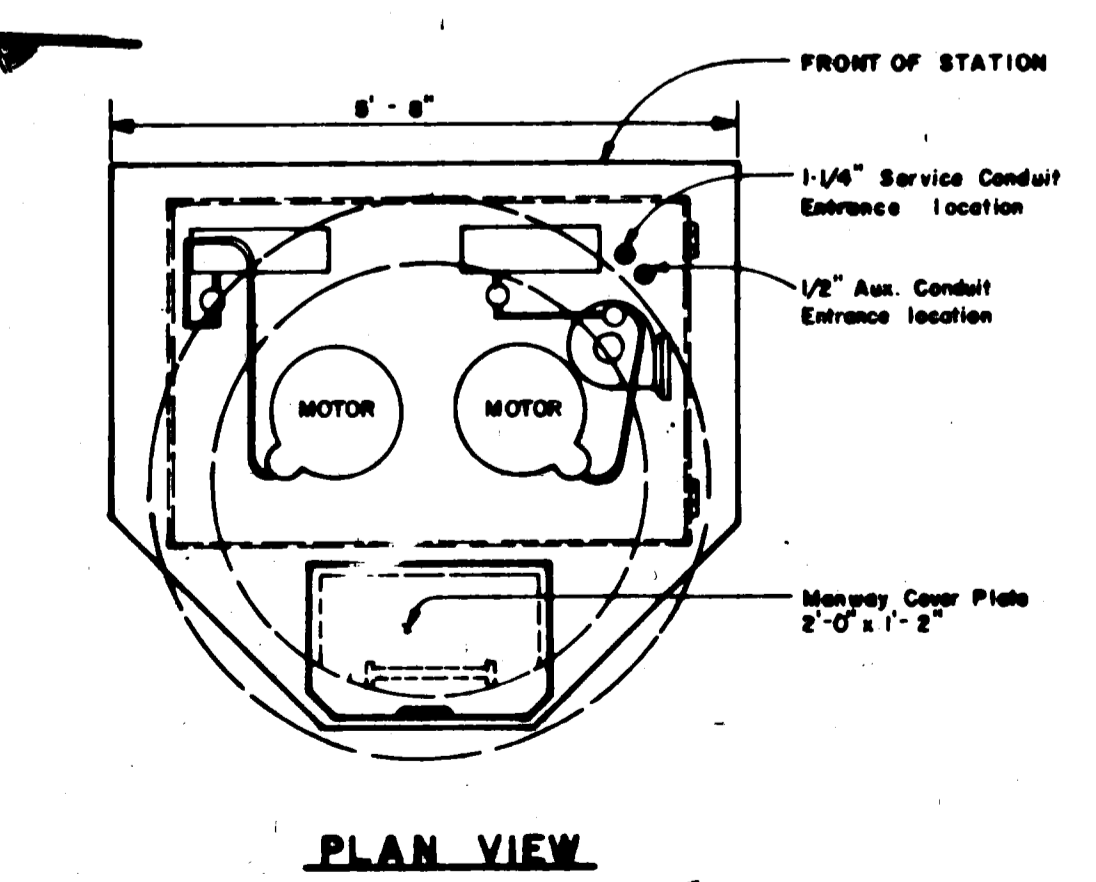
**NOTE**  
 Pipe may be laid through manholes and used to form Invert Slope from top of pipe grade at sides to spring line.



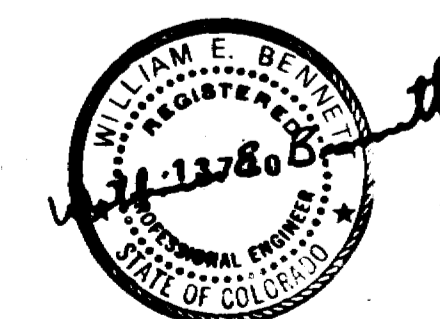
Service Pole and all Field wiring to be provided by Contractor. Power to service pole to be provided at Owner's expense.

Station to be provided by Contractor for future connection to City of Grand Junction telephone relay alarm system.

**ELECTRICAL SERVICE CONNECTION**



**AS CONSTRUCTED**



REVISED 11/20/78  
 REVISED 9/5/78

**ARMSTRONG ENGINEERS**  
 ENGINEERING-SURVEYING  
 CONCRETE & SOILS TESTING

As Shown  
 7/7/77  
 SAD  
 W.E.B.

**WESTGATE PARK**  
 STANDARD SEWER DETAIL  
**SHEET 4 of 4**  
 JOB NUMBER 771034