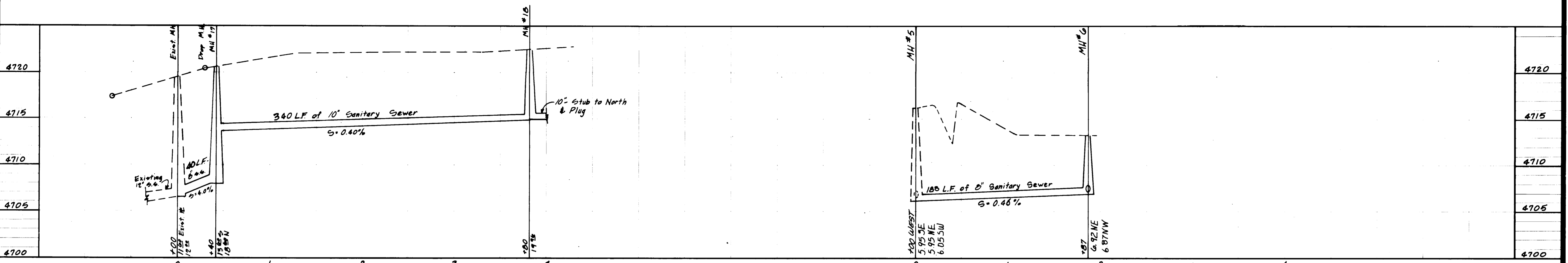


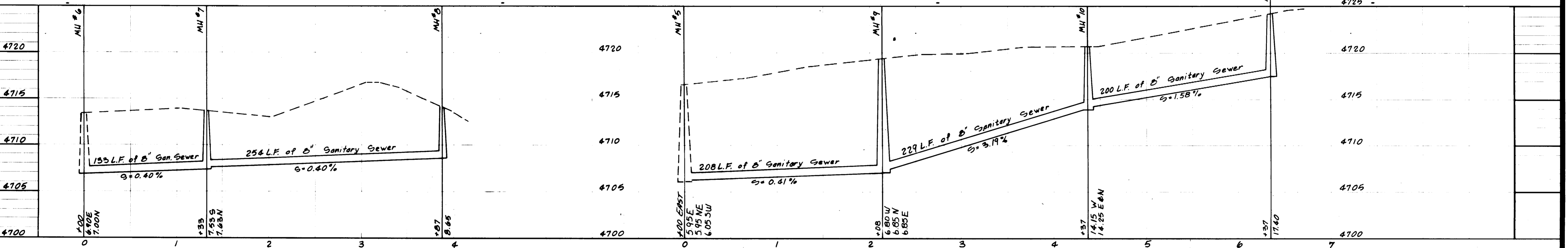
NOTE:
 - - - First Filing
 - Second Filing
 - First Filing As Built
 Include M.H. #6

NO.	BY	DATE	APPROVED	REVISIONS	DATE	PROJECT ENGR.	PROJECT MGR.	DEPT. HEAD	CONST. REP.		NELSON - HALEY - PATTERSON AND QUIRK ENGINEERING CONSULTANTS	SANITARY SEWER AND DOMESTIC WATER DISTRIBUTION PLAN	BELL RIDGE SUBDIVISION 02214	SHEET 8 OF 6
1	MMB	5/79			January 1977	RDR	KMW							



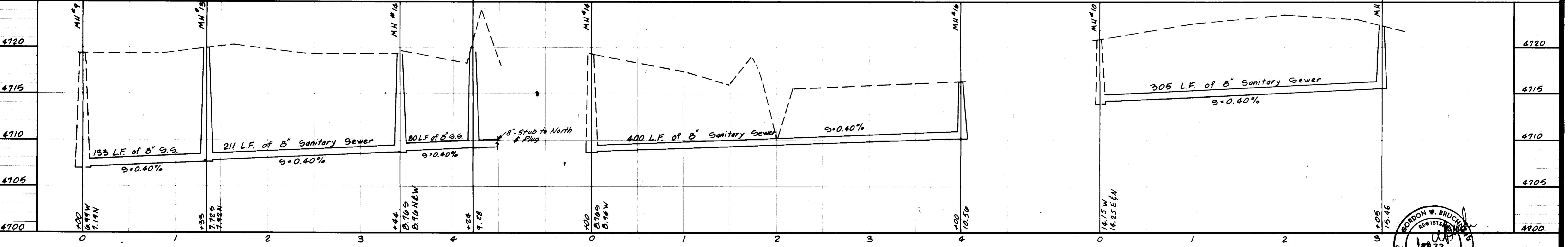
27 1/2 ROAD

AS BUILT F 1/2 ROAD (WEST)



RIDGE COURT

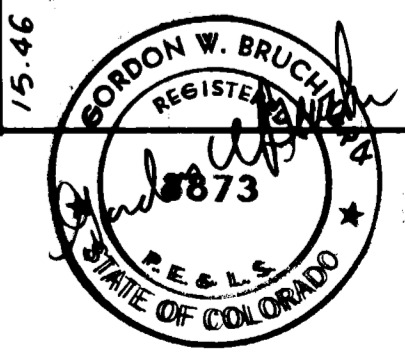
AS BUILT F 1/2 ROAD (EAST)



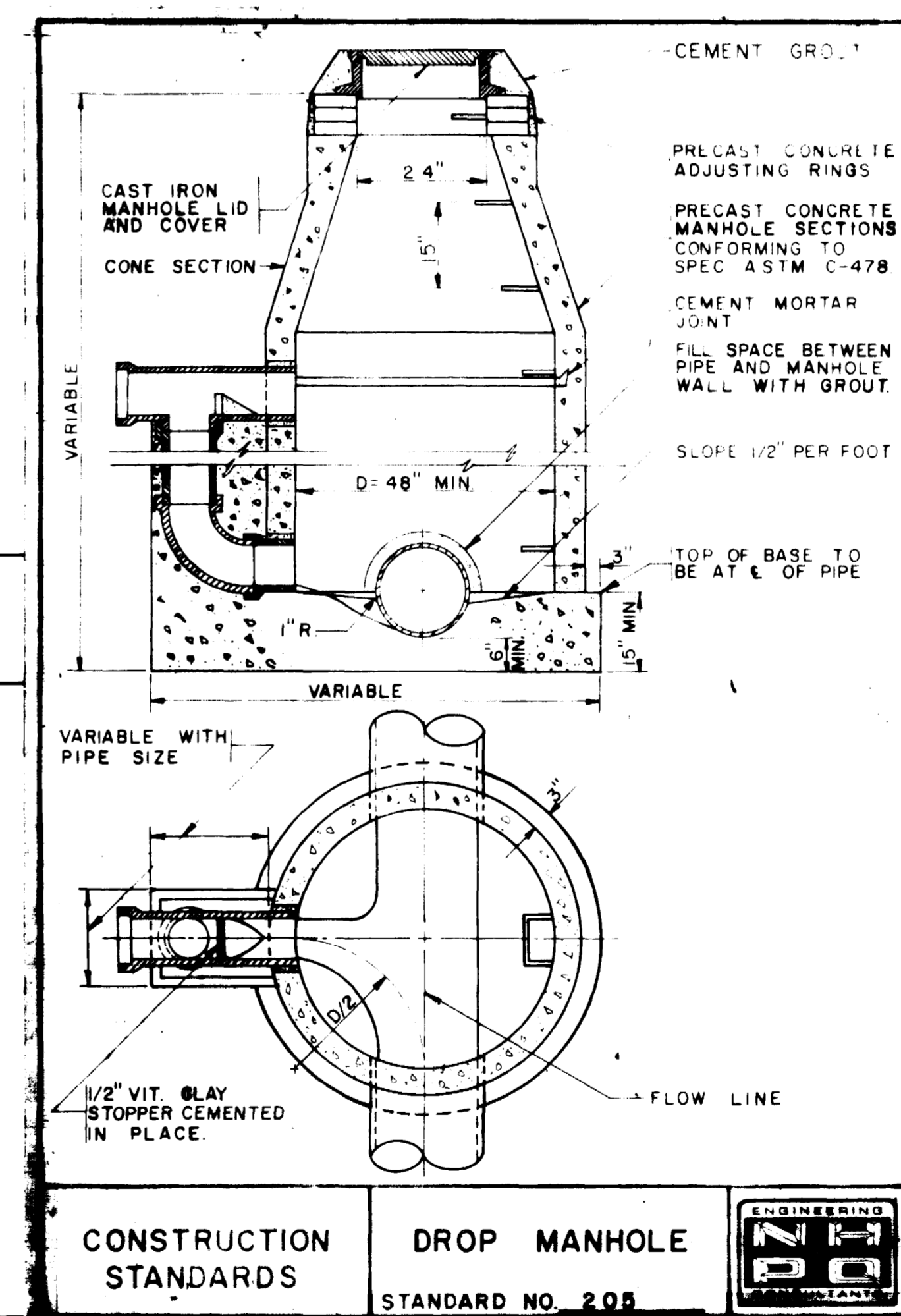
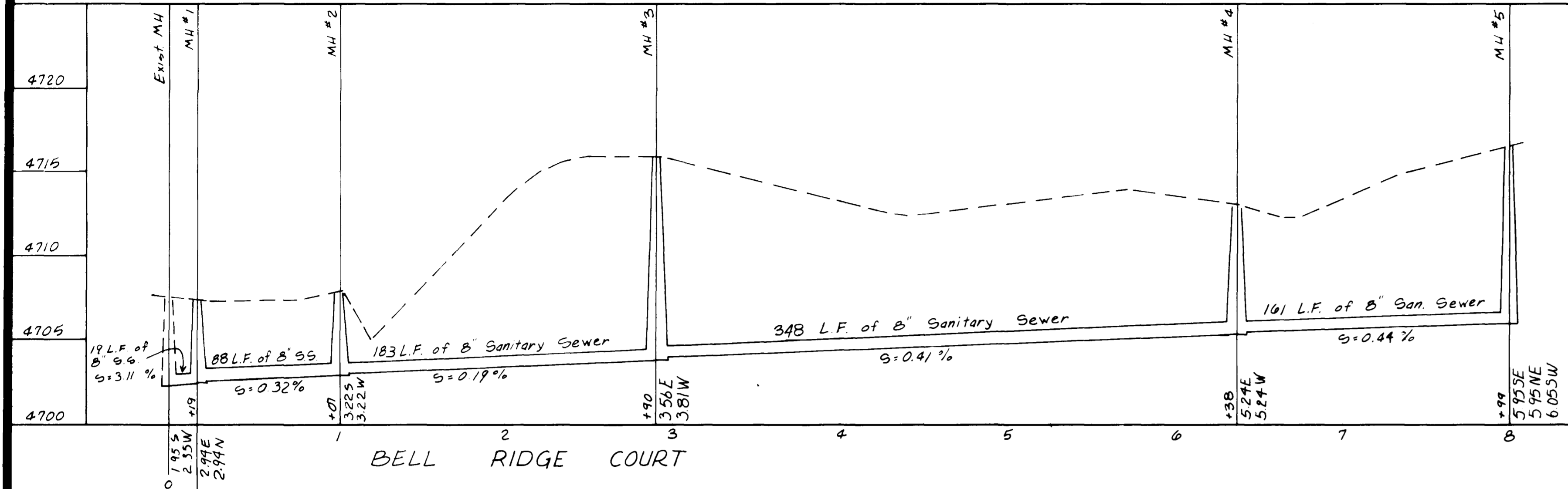
BELL RIDGE STREET

CREST AVENUE

AS BUILT BELL COURT



7	Web	5/79	As-Built - Bell Court	DATE	January 1977	DRAFTSMAN	RDR	DEPT. HEAD			NELSON - HALEY - PATTERSON AND QUIRK ENGINEERING CONSULTANTS	SANITARY SEWER PROFILES	BELL RIDGE SUBDIVISION	SHEET 8
NO.	BY	DATE	APPROVED	REVISIONS	SCALE	PROJECT ENGR.	EJS	CONST. REP.						



AS BUILT *Edward H. Heltzer*

DATE	January 1977
SCALE	1" = 5' Vertical 1" = 50' Horiz.

DESIGNER	RDR	DEPT. HEAD	
PROJECT ENGINEER	EJS	CONST. MGR.	
PROJECT MGR.	KMW		

NELSON - HALEY - PATTERSON AND QUIRK
ENGINEERING CONSULTANTS

SANITARY SEWER PROFILES

BELL RIDGE SUBDIVISION

8 SHEETS
8