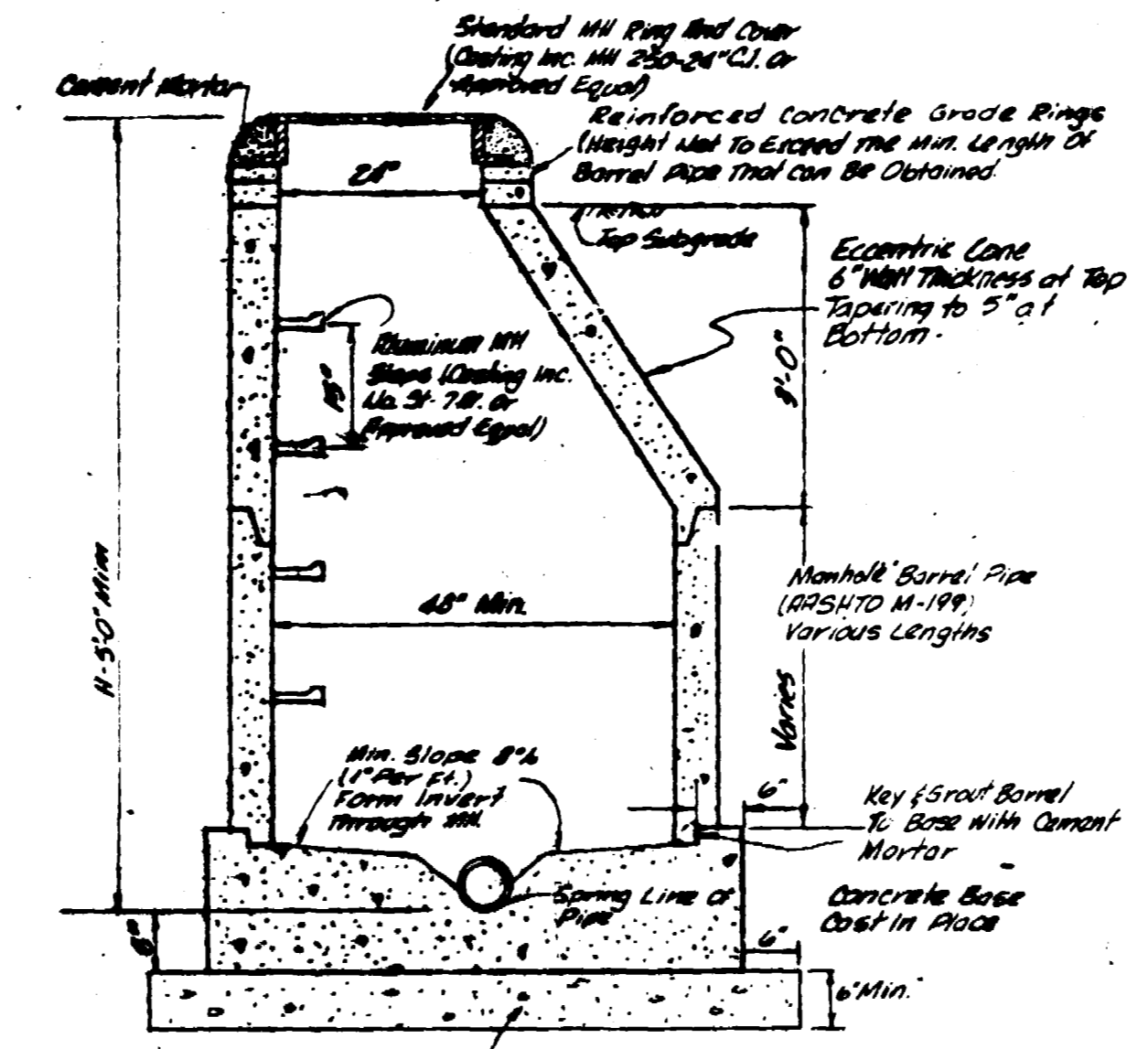
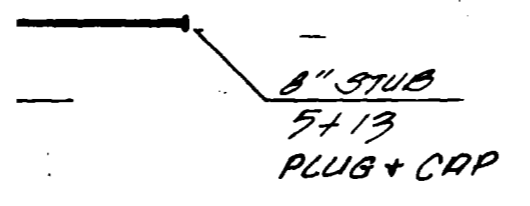
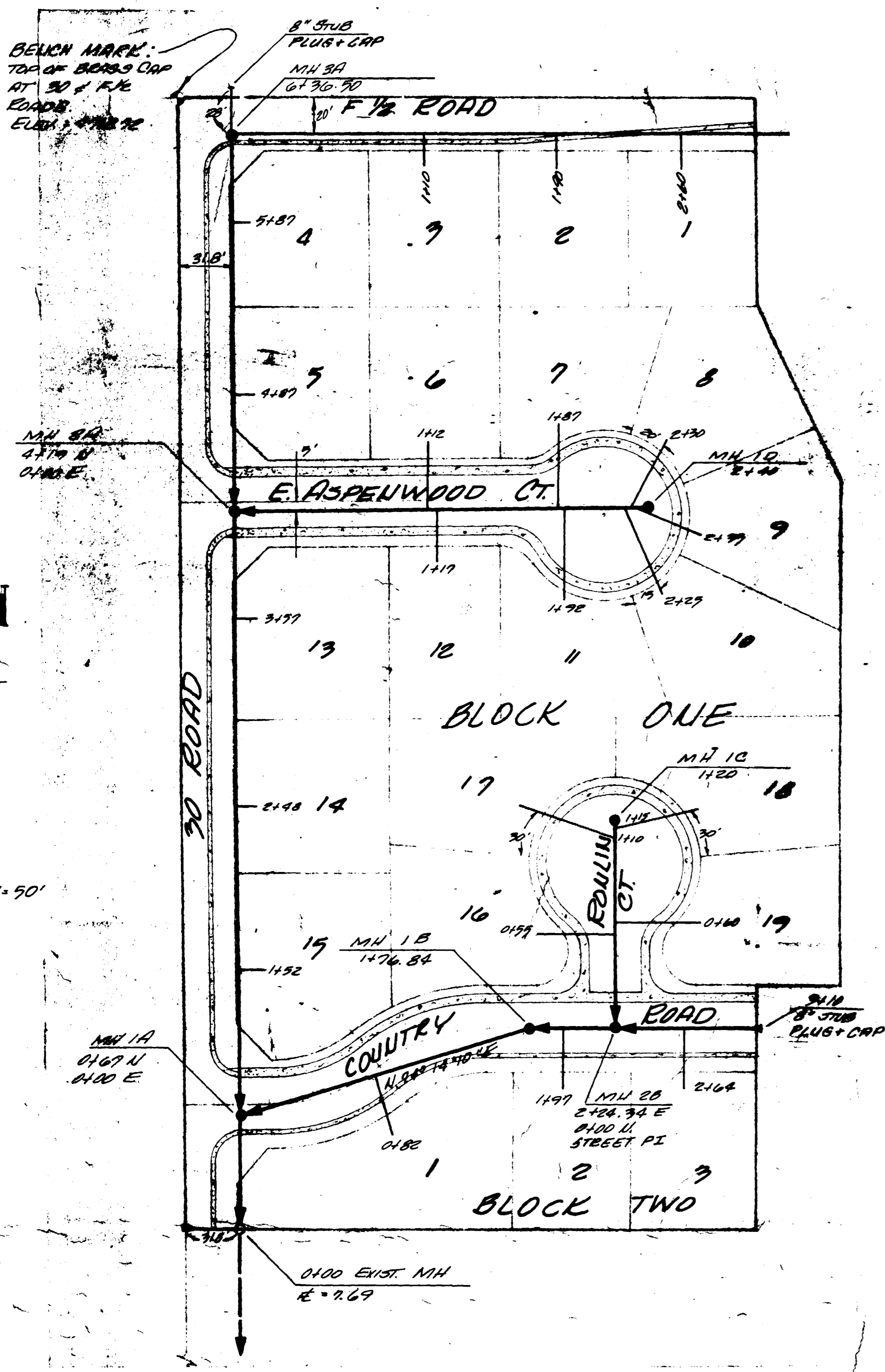


REVISIONS	BY

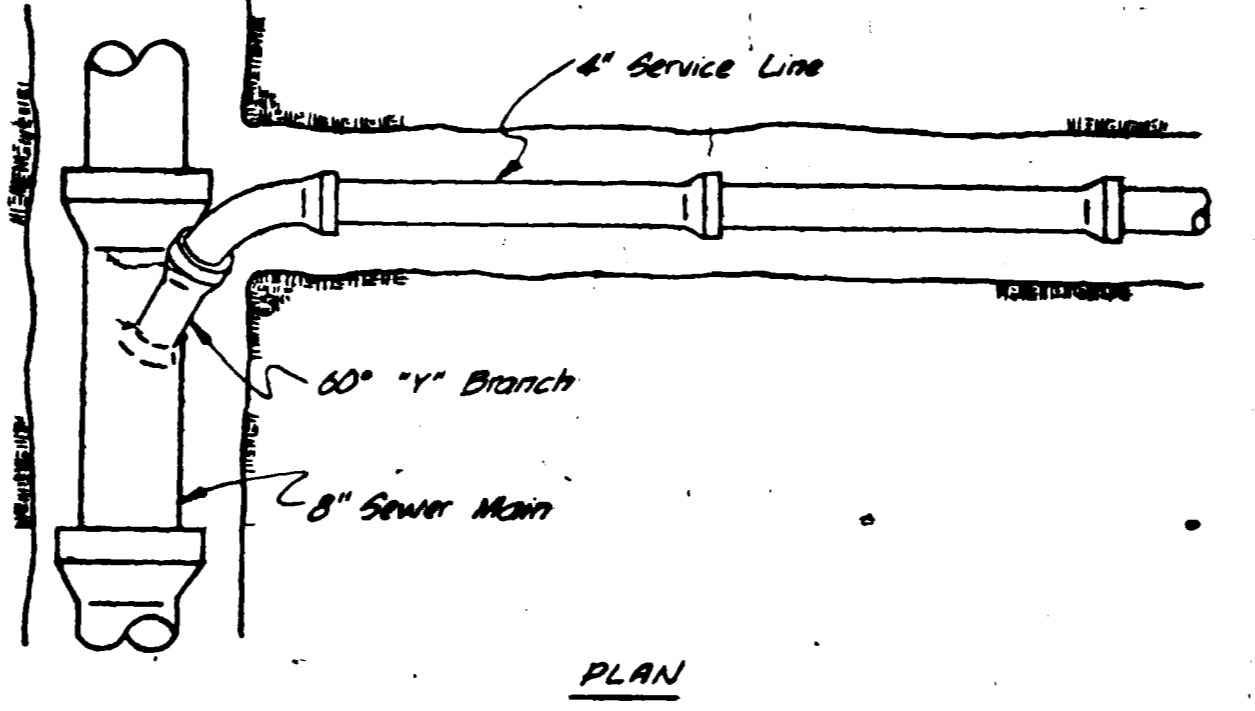
PARAGON ENGINEERING, INC.  
 P.O. Box 1870  
 GLENDALE, ARIZONA 85305



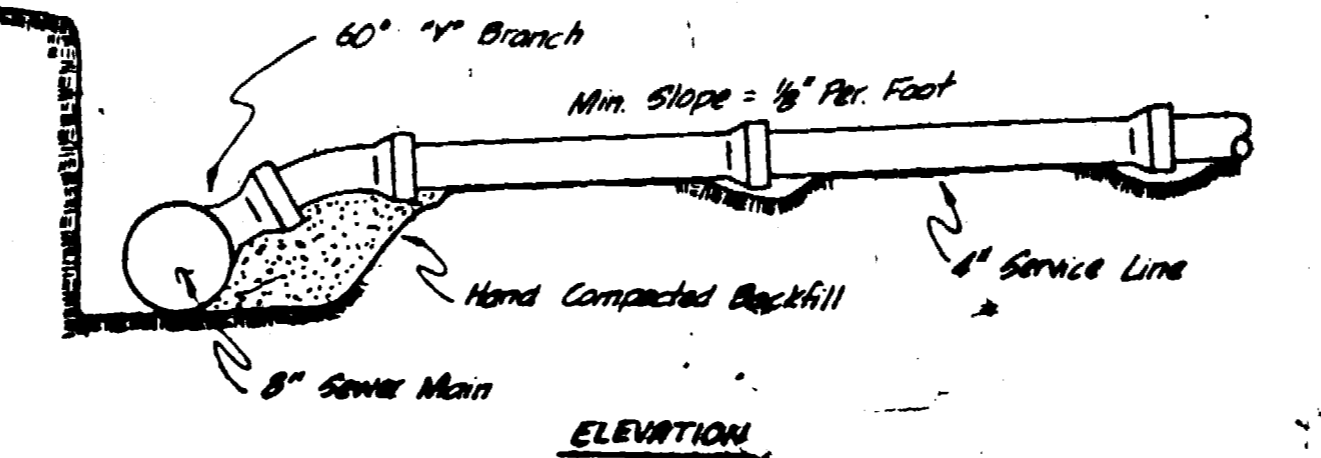
LAURADALE SUBDIVISION FILING NO. ONE  
 MESA COUNTY, COLORADO  
 SANITARY SEWER PLANS & DETAILS



STANDARD MANHOLE

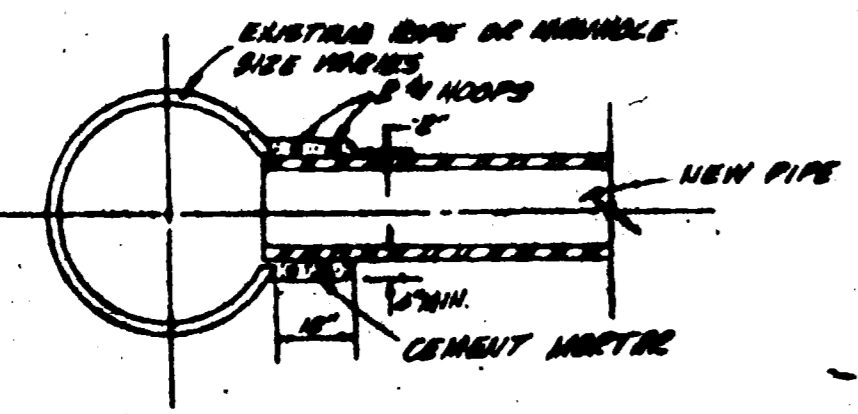


PLAN

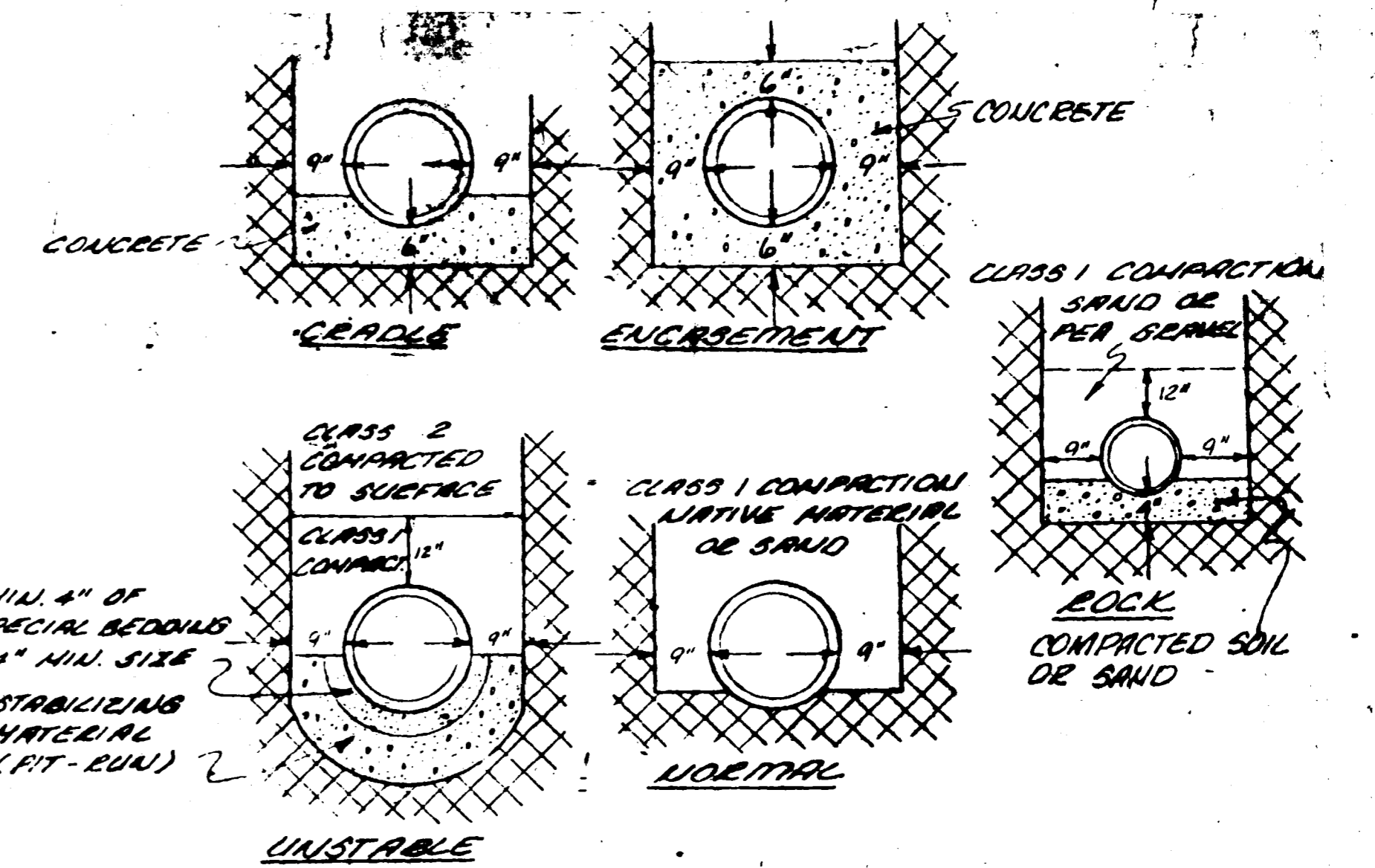


ELEVATION

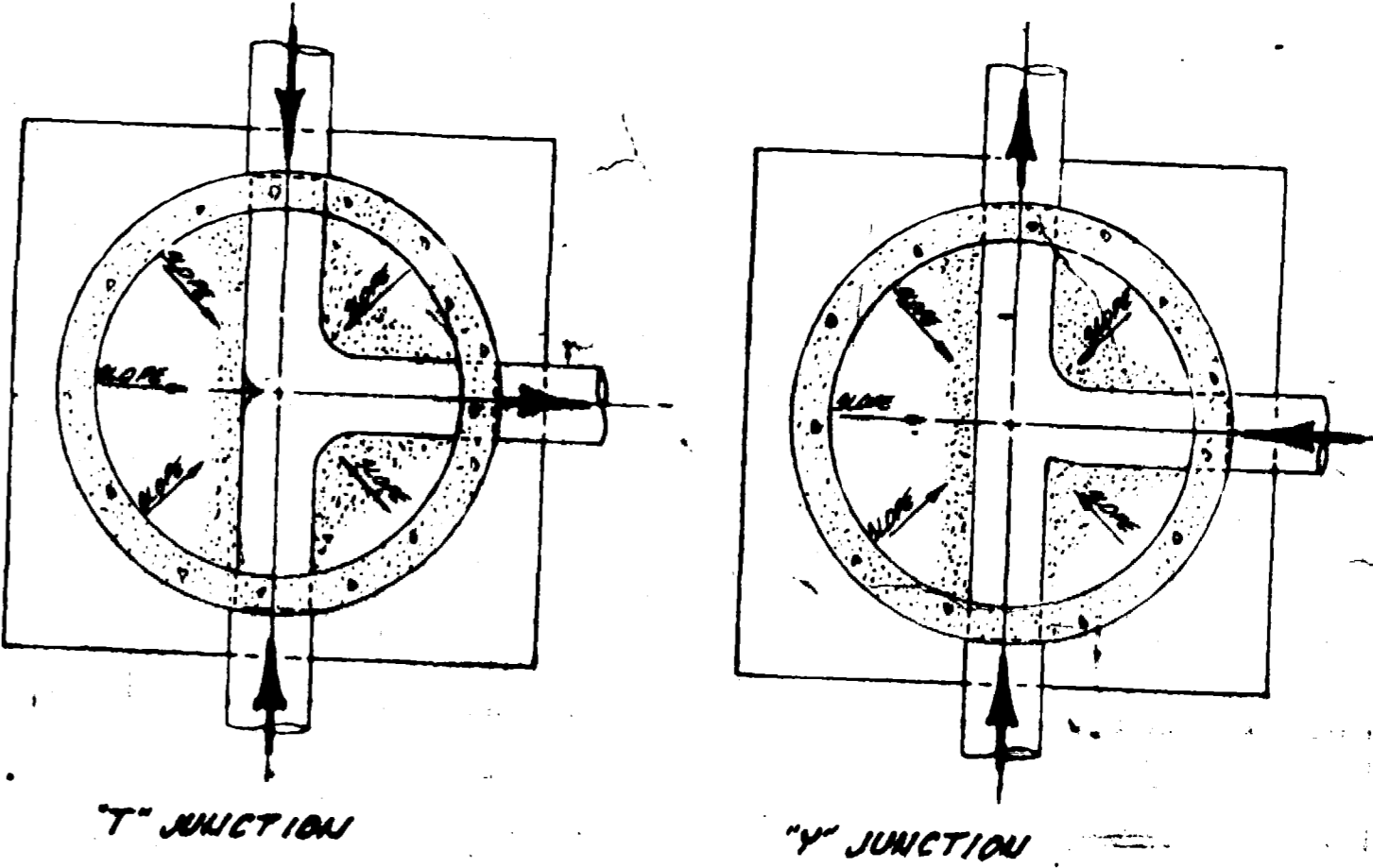
STANDARD SERVICE CONNECTION  
 No Scale



CONNECTION TO EXISTING  
 MANHOLE OR PIPE



TYPICAL BEDDING DETAIL  
 N.T.S.  
 HAND DIG FOR BELL OR COUPLING



SECTION "A-A"

QUANTITIES  
 18,825 LF OF 8" SAN. SEWER  
 8 STANDARD M.H.  
 29 SERVICE CONNECTIONS

GENERAL NOTES  
 1 TOP OF ECCENTRIC CONE TO BE SET @  
 TOP OF SUBGRADE (STREET CONTRACTOR  
 TO SET RIMS TO FINISH GRADE OF CURBS)  
 2 ALL CONSTRUCTION TO BE DONE IN ACCORDANCE  
 WITH THE CENTRAL GRAND VALLEY SANITARY  
 DISTRICT SPECIFICATIONS.

AS BUILT DRAWINGS

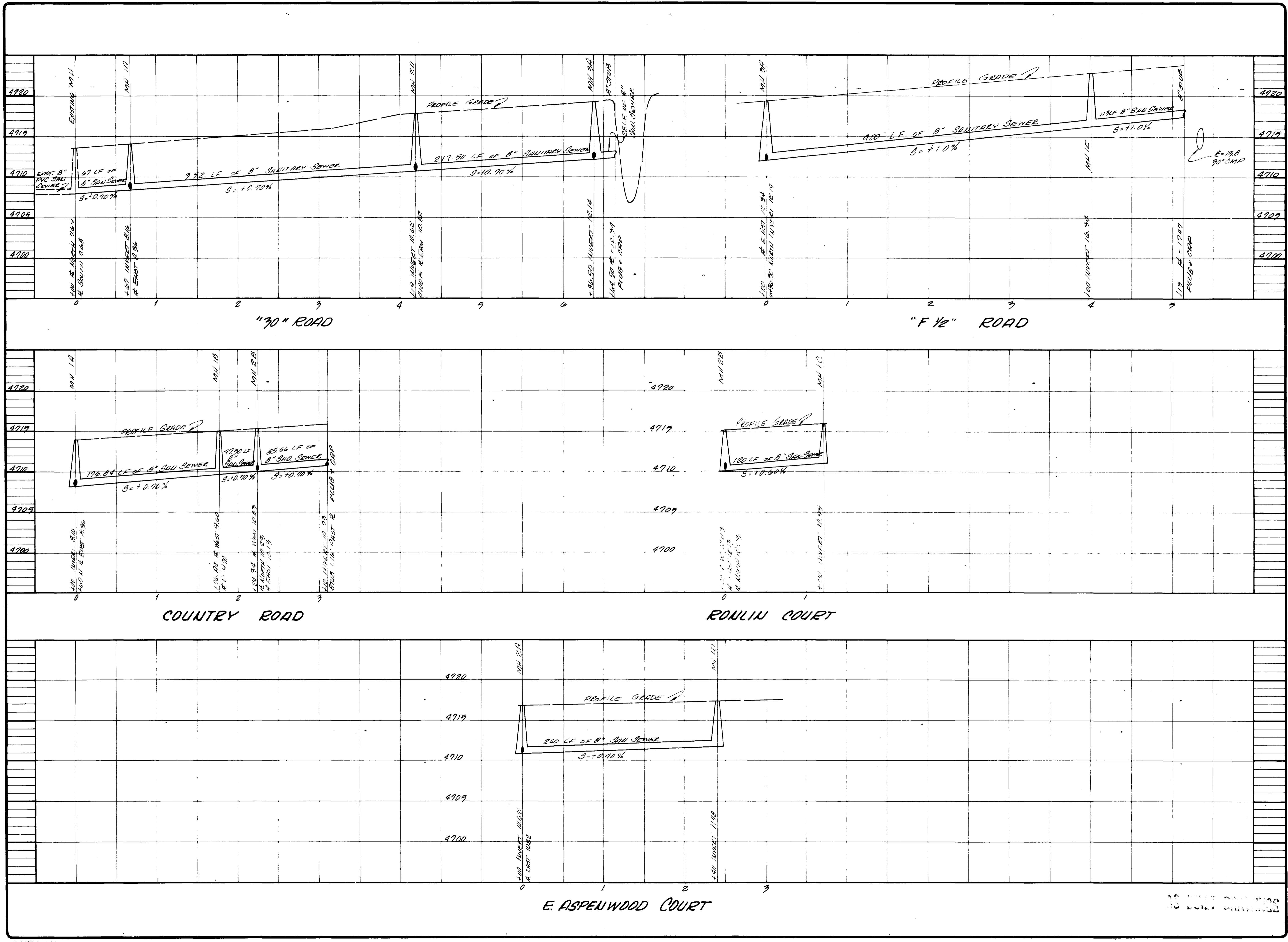
APPROVED \_\_\_\_\_ DATE \_\_\_\_\_  
 CENTRAL GRAND VALLEY SAN. DIST.

REVISIONS	BY

**PARAGON ENGINEERING, INC.**  
 P.O. Box 2872  
 Grand Junction, Colorado 81501 (303) 243-8866



LAUREDALE SUB FILING NO. ONE  
 MESA COUNTY, COLORADO  
 SANITARY SEWER PROFILES



15 ONLY SANITARY