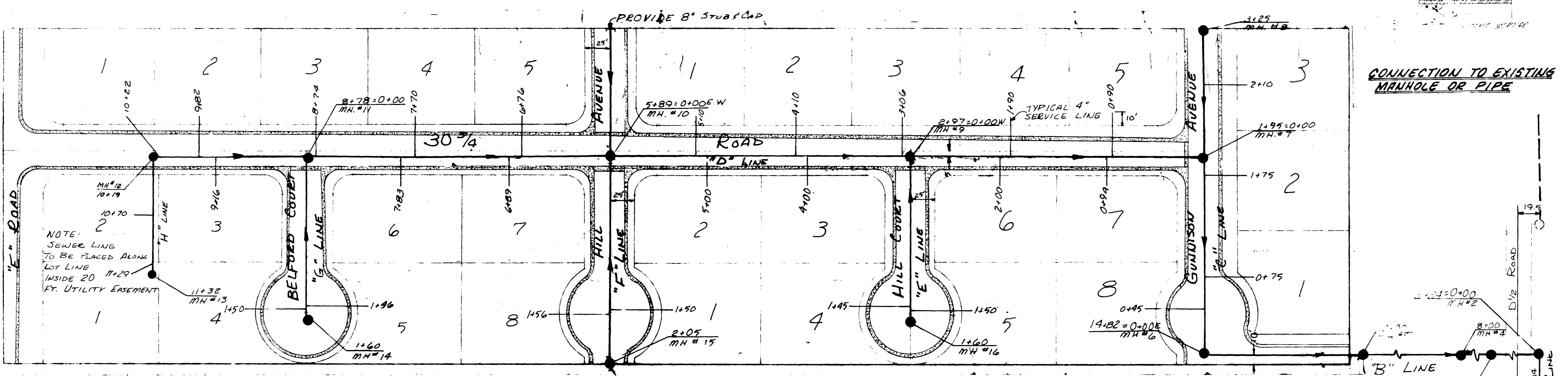
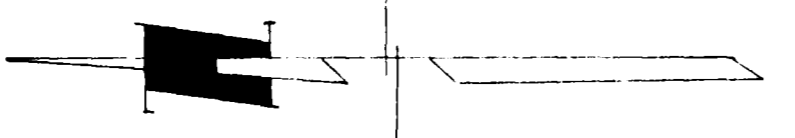
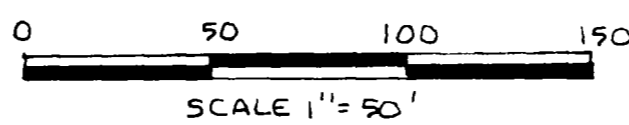


BENCHMARK ELEVATION OF 4660.40 ON TOP OF SURVEY BRASS CAP AT 31 ROAD AND "E" ROAD



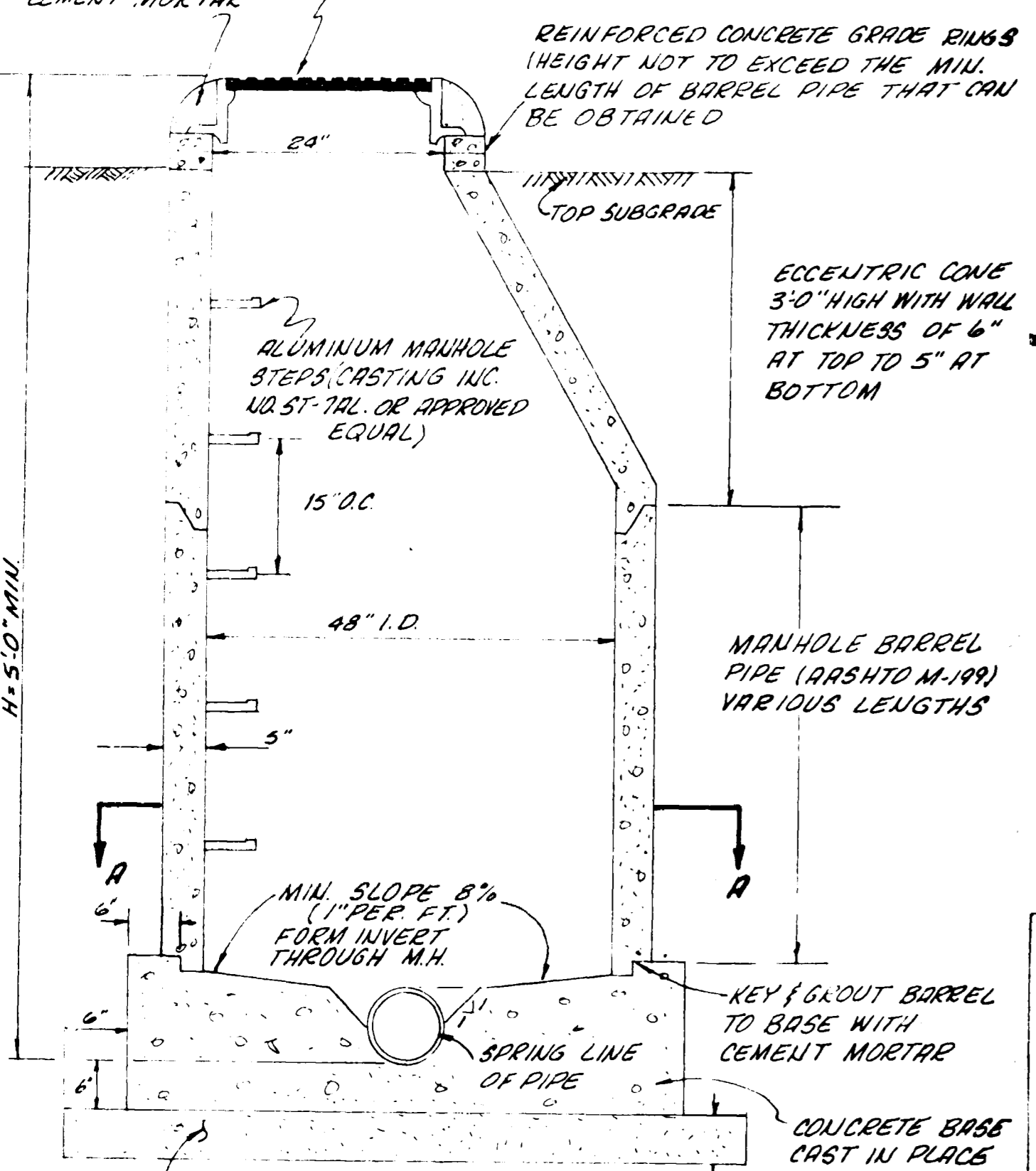
CONNECTION TO EXISTING MANHOLE OR PIPE

NOTE: SEWER LINE TO BE PLACED ALONG LOT LINE INSIDE 20 FT. UTILITY EASEMENT

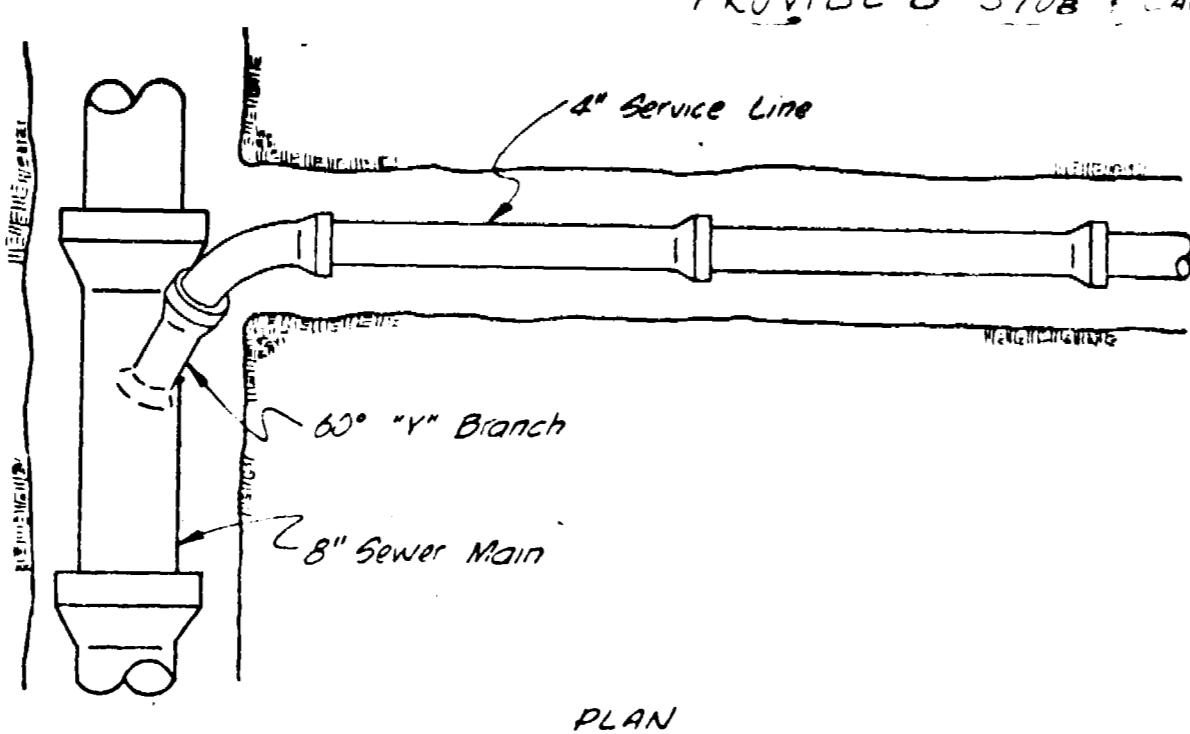
SUNRIDGE SUBDIVISION  
SANITARY SEWER QUANTITIES  
11 STANDARD MANHOLES 6-8 FOOT DEPTH  
2420 LF 8" SEWER PIPE  
29 EACH SERVICE CONNECTION  
895 LF 4" SEWER PIPE  
240 LF 4" SEWER PIPE  
D/2 ROAD SANITARY SEWER INTERCEPTOR  
QUANTITIES  
5 STANDARD MANHOLES  
1275 LF 8" SEWER PIPE

STANDARD MH RING AND COVER (CASTINGS INC. M.H. 250-24 "C" OR APPROVED EQUAL)  
CEMENT MORTAR

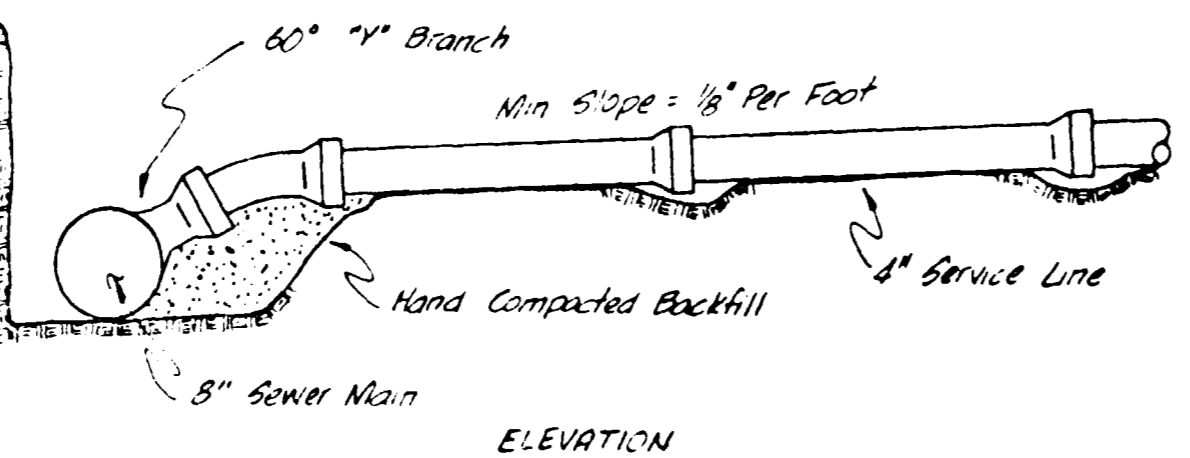
REINFORCED CONCRETE GRADE RINGS (HEIGHT NOT TO EXCEED THE MIN. LENGTH OF BARREL PIPE THAT CAN BE OBTAINED)  
TOP SUBGRADE



STANDARD MANHOLE  
AGGREGATE BED COURSE (ARSH TO N-43 STD SIZE NO 5, 56 & 57)

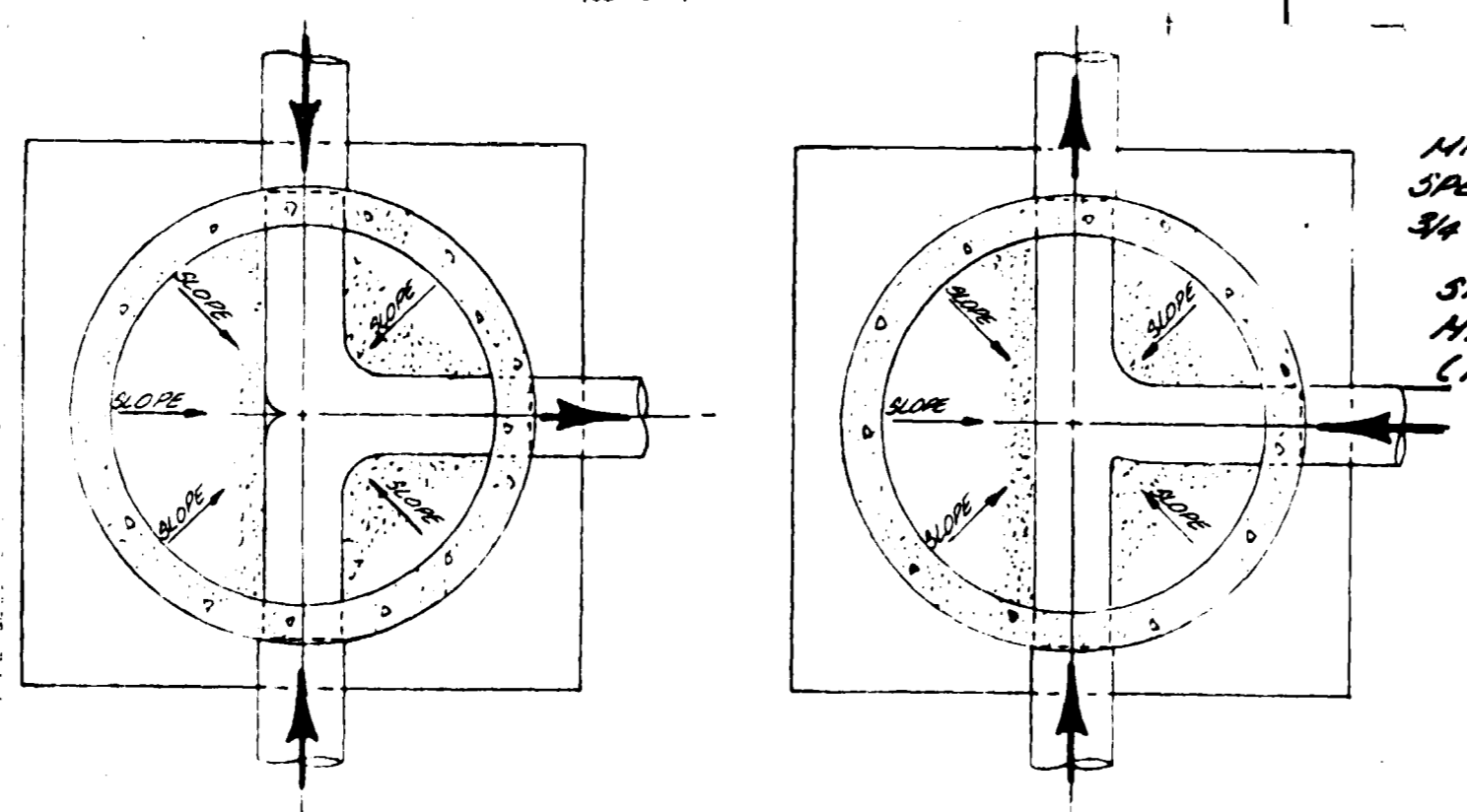


PLAN



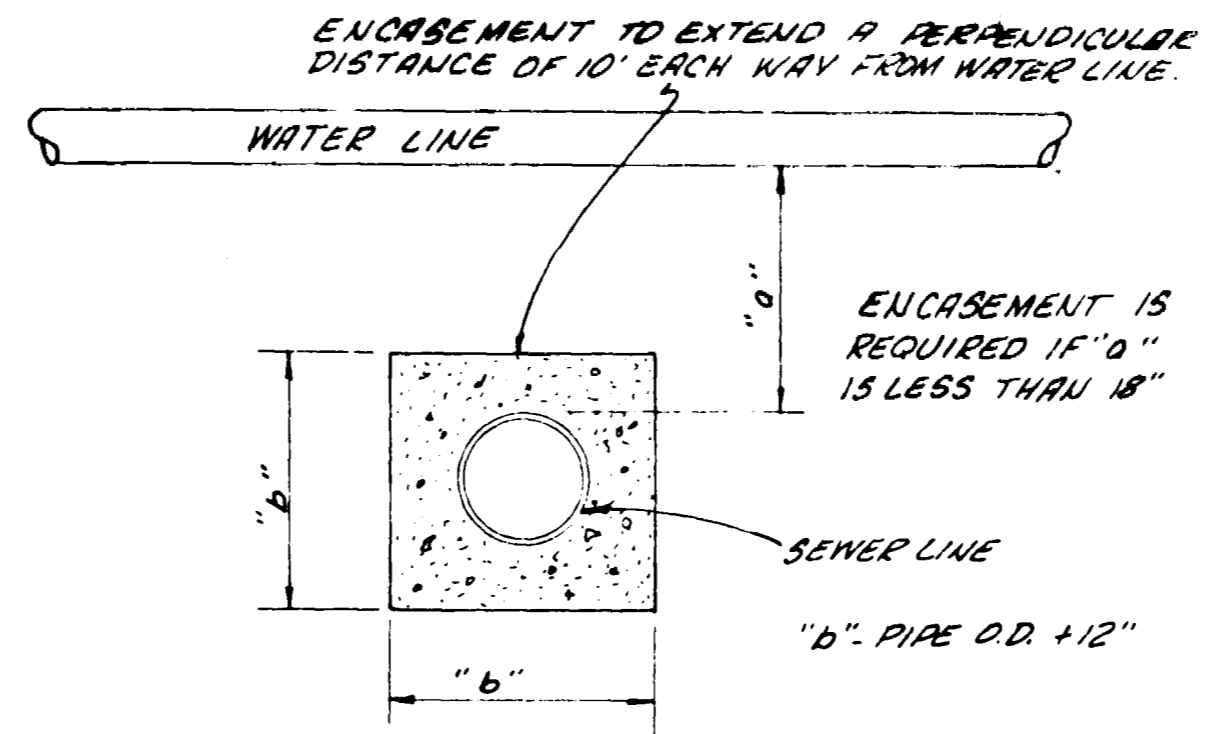
ELEVATION

STANDARD SERVICE CONNECTION  
NO SCALE

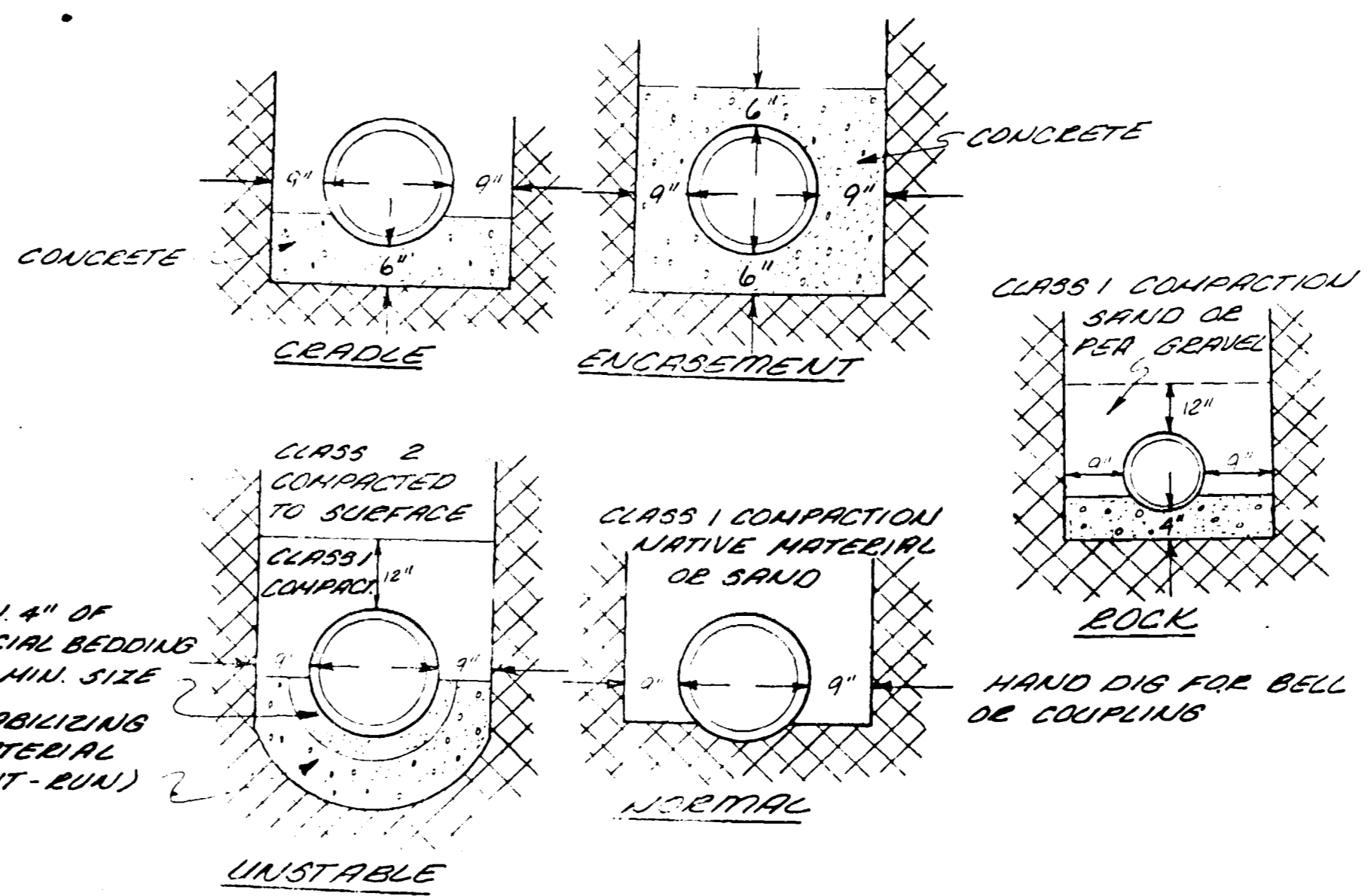


"T" JUNCTION

"Y" JUNCTION



SEWER LINE ENCASEMENT DETAIL



TYPICAL BEDDING DETAIL  
NO SCALE

- NOTE 5:
- 1 TOP OF ECCENTRIC CONE TO BE SET AT TOP OF 5.3 RIDE (STREET CONTRACTOR TO SET RIMS TO FINISHED OF TREE)
  - 2 ALL CONSTRUCTION TO BE DONE IN ACCORDANCE WITH THE CENTRAL GRAND VALLEY SANITATION DISTRICT SPECIFICATIONS
  - 3 ALL CONSTRUCTION TO BE DONE IN ACCORDANCE WITH THE COLORADO DEPARTMENT OF HEALTH SPECIFICATIONS
  - 4 CONTRACTOR IS RESPONSIBLE FOR LOCATING ALL BURIED UTILITIES AND PROTECTING THE SAME
  - 5 IF VERTICAL AND HORIZONTAL CLEARANCES ARE LESS THAN STATE MINIMUMS, THEN CONCRETE ENCASEMENT MAY BE REQUIRED ON SEWER LINES WHERE WATER MAINS ARE LESS THAN 7' FROM REQUIREMENTS
  - 6 MANHOLES, UNLESS OTHERWISE NOTED, ARE TO BE LOCATED 5' (MIN) WEST (OR 5' (MAX) SOUTH) OF STREET INTERSECTIONS
  - 7 ALL SEWER SERVICES TO EXTEND 10' BEYOND PROPERTY LINE

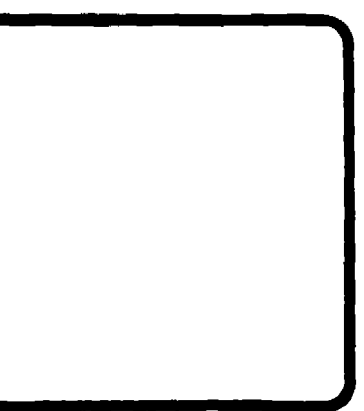
NOTE:  
This is to certify that this system is filtration does not exceed 200 gallons per inch diameter per mile or length per day.

APPROVED \_\_\_\_\_  
CENTRAL GRAND VALLEY SANITATION DISTRICT

CHECKED
DATE
SCALE

REVISIONS	BY

**PARAGON ENGINEERING, INC.**  
P.O. Box 2872  
Grand Junction, Colorado 81501 (970) 243-8868

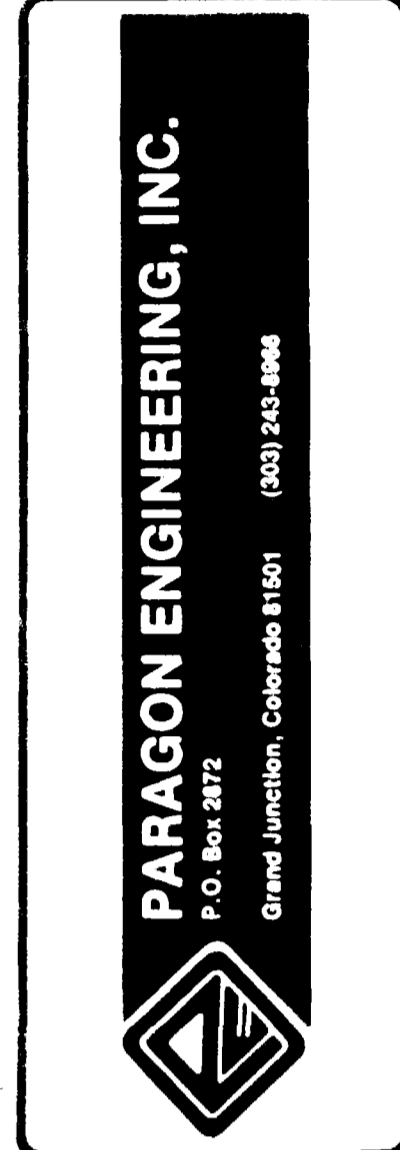


SUNRIDGE SUBDIVISION  
MESA COUNTY, COLORADO  
SANITARY SEWER PLAN

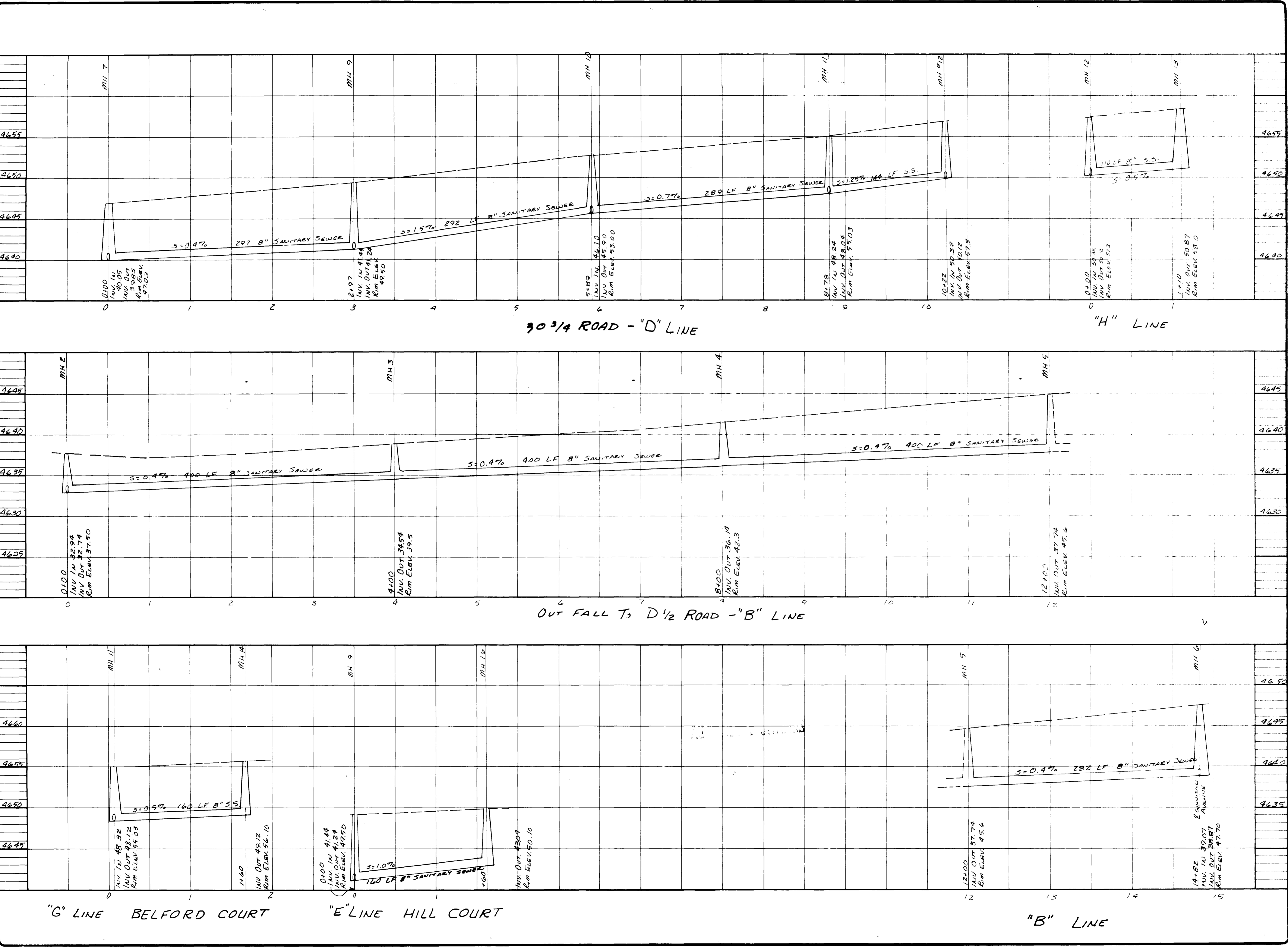
SHEET
1
OF 3 SHEETS

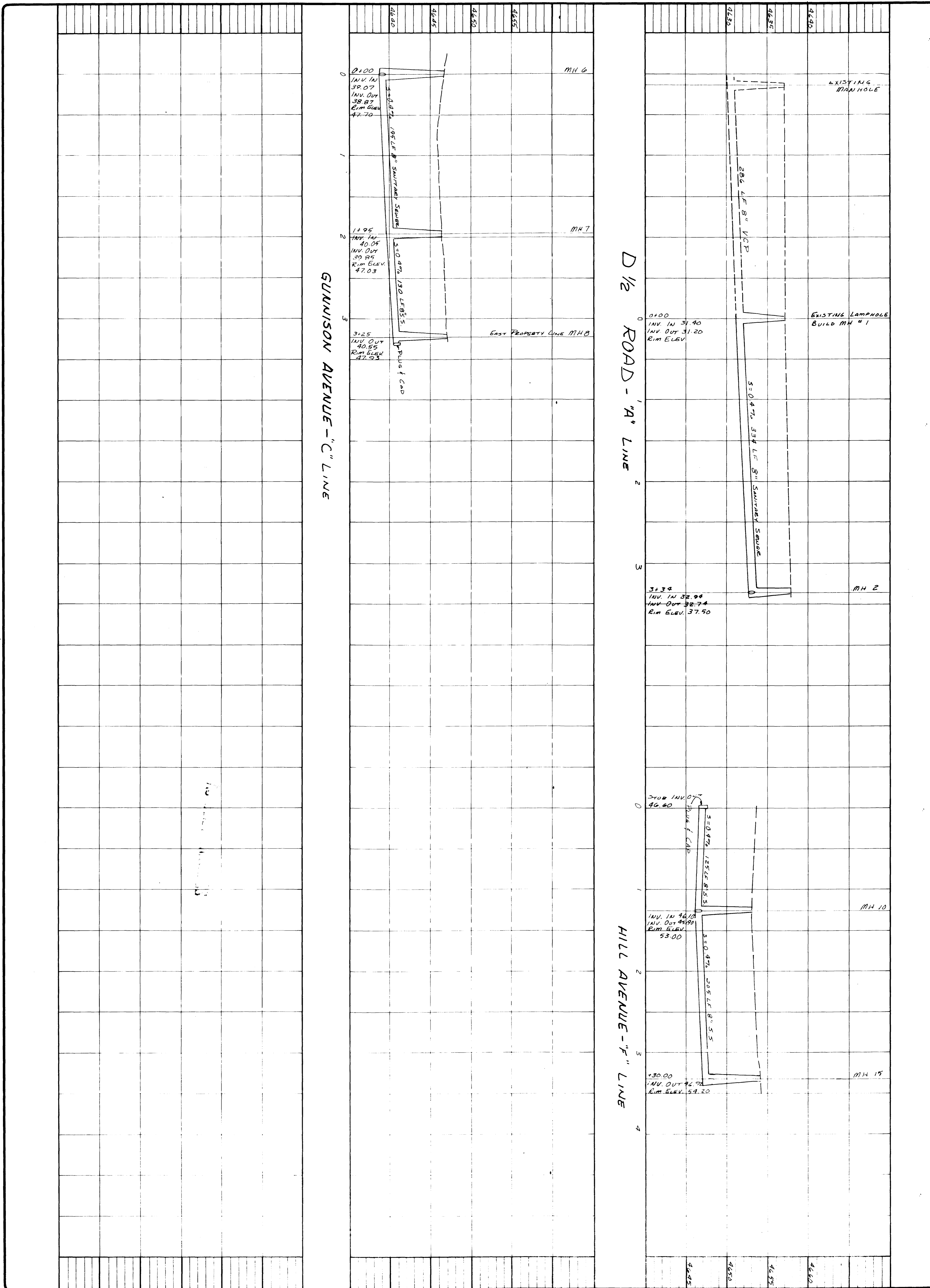
CHECKED
DATE
SCALE

REVISIONS	BY



SUNRIDGE SUBDIVISION  
 MESA COUNTY, COLORADO  
 SANITARY SEWER





02022103.tif