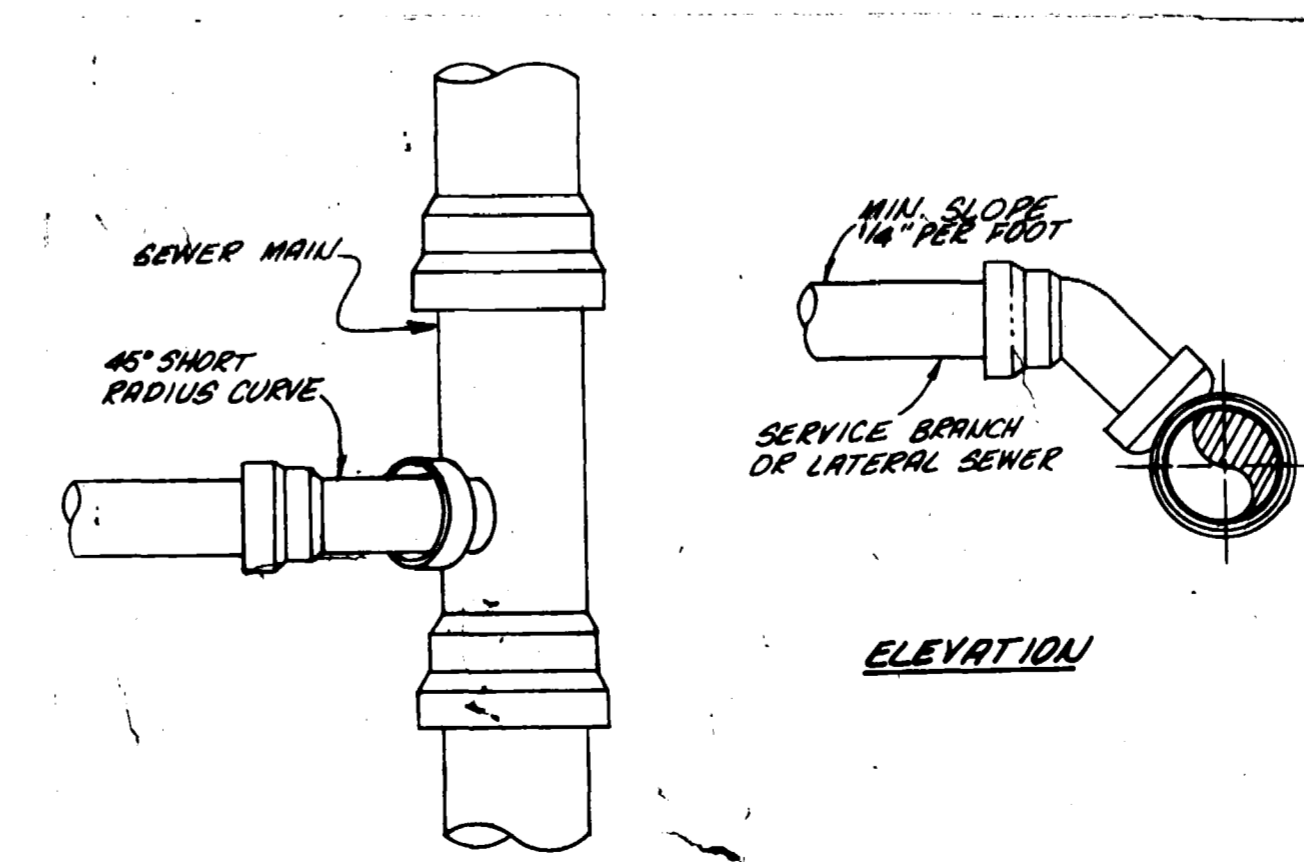


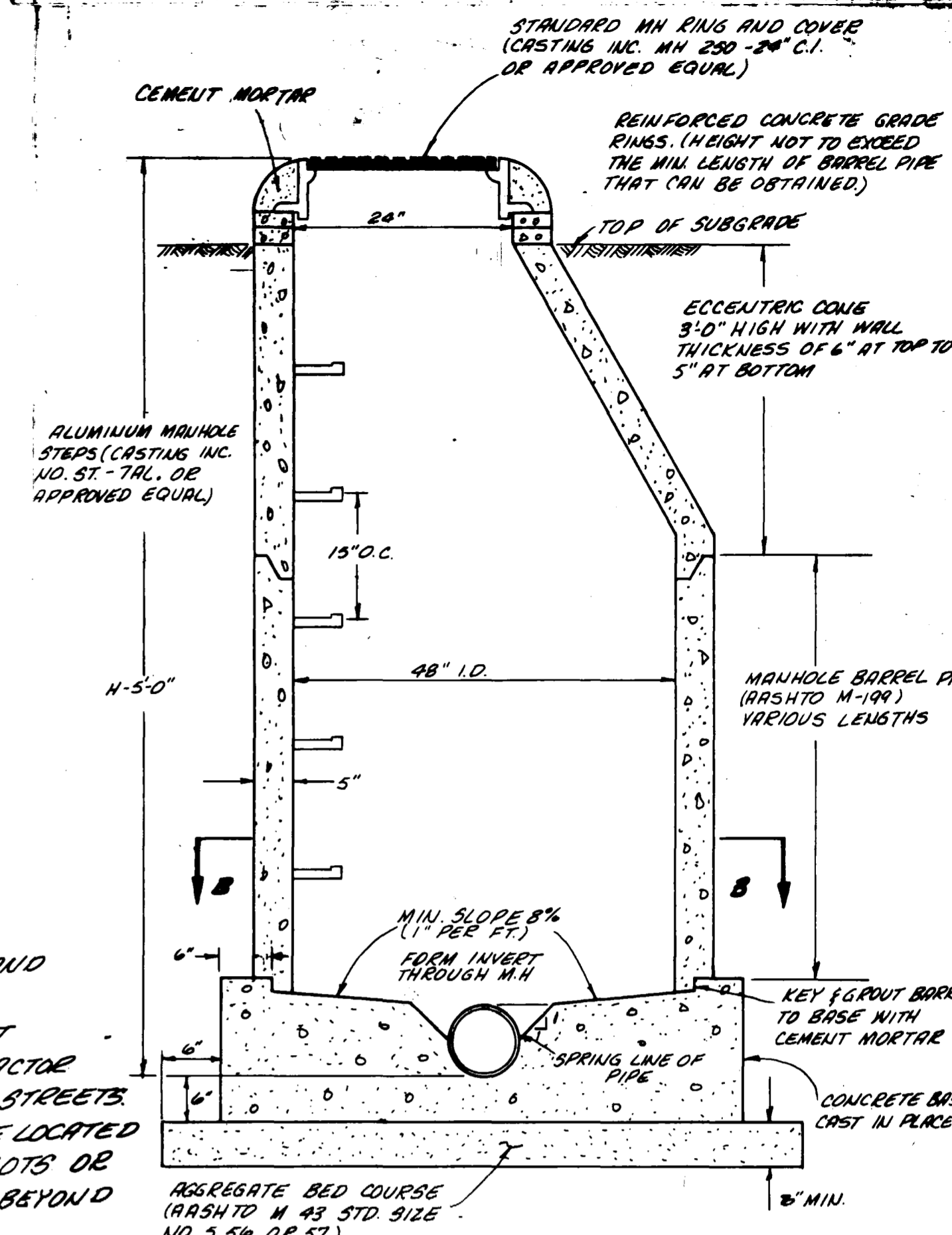
SECTION B-B

- NOTES:
1. ALL CONSTRUCTION TO BE DONE IN ACCORDANCE WITH THE "CITY OF GRAND JUNCTION SPECIFICATIONS."
  2. TOP OF ECCENTRIC CONE TO BE SET @ TOP OF SUBGRADE (STREET CONTRACTOR TO SET RIMS TO FINISH GRADE OF STREETS.)
  3. SERVICE LINES ARE INTENDED TO BE LOCATED 5' DOWNSTREAM FROM CENTER OF LOTS OR AS SHOWN ON PLANS AND EXTEND 10' BEYOND PROPERTY LINE.

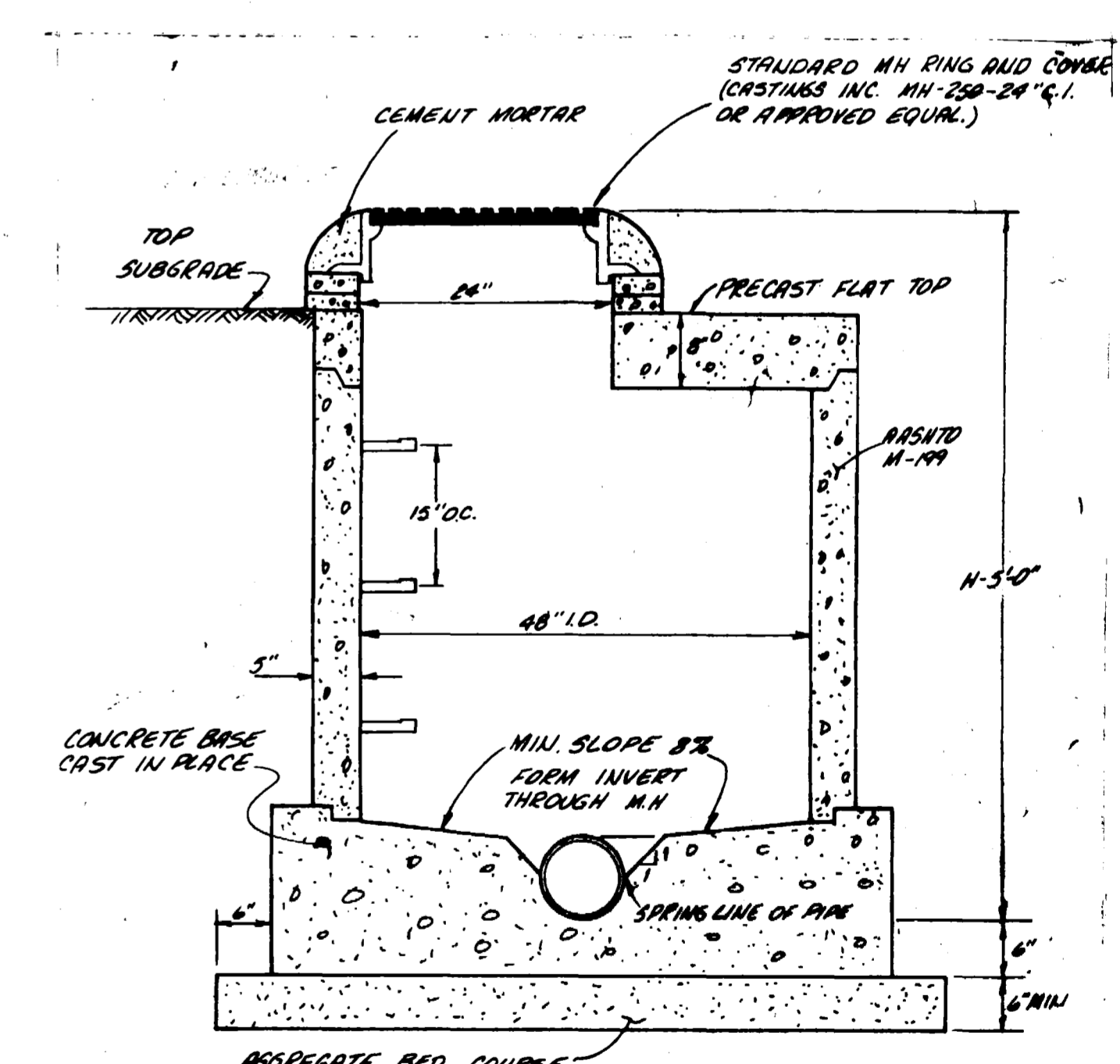
QUANTITIES  
 MANHOLES = 15  
 8" SANITARY SEWER 2801 LF  
 4" SERVICE LINES = 47



PLAN  
 TYPICAL LATERAL "T" CONNECTIONS



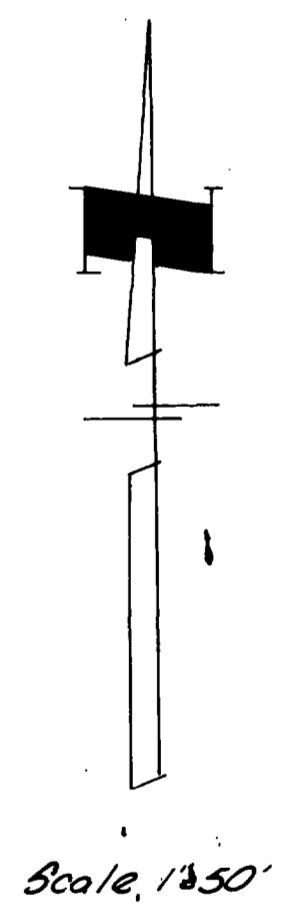
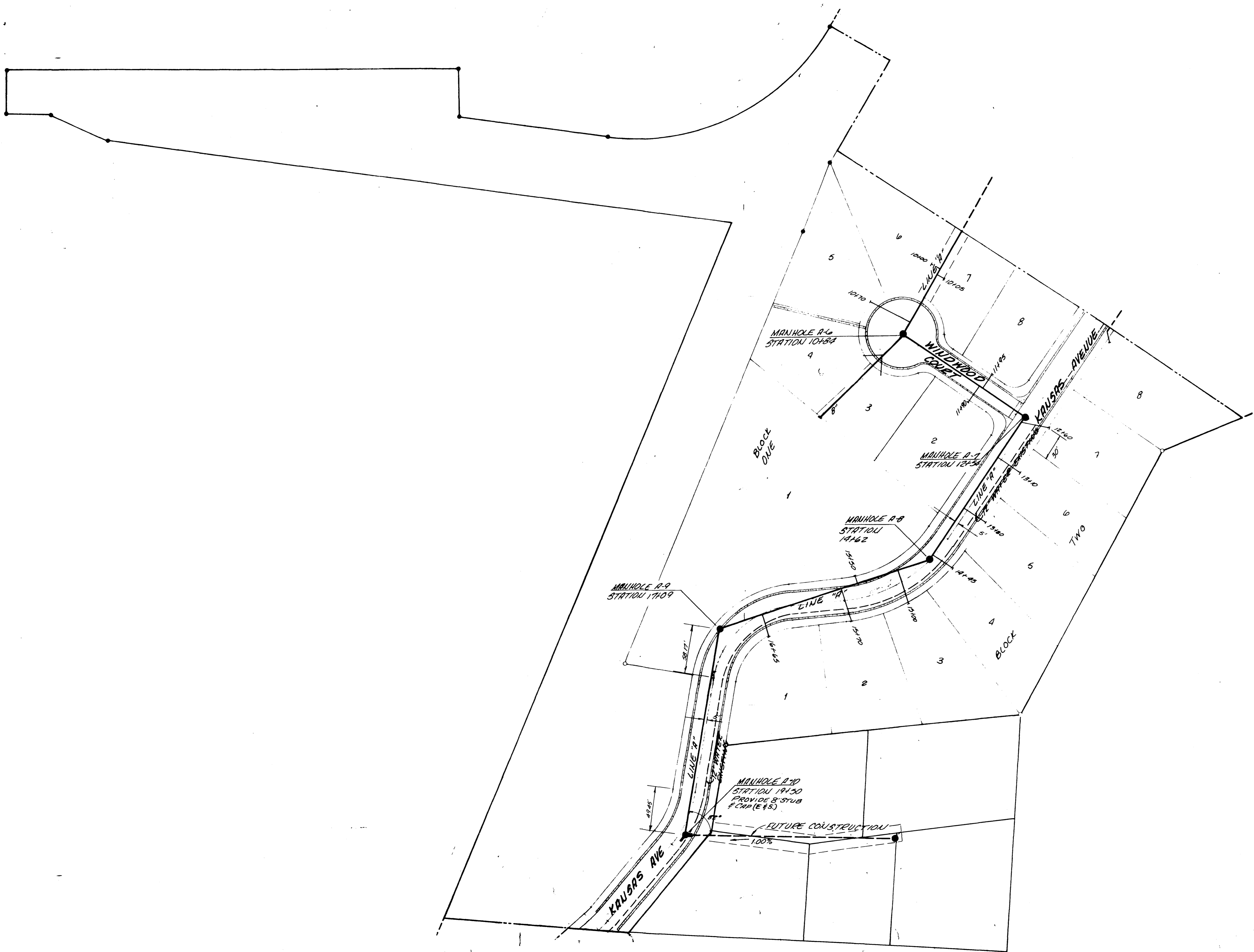
STANDARD MANHOLE  
 Scale: 3/4" = 1'-0"



STANDARD SHALLOW MANHOLE  
 Scale: 3/4" = 1'-0"

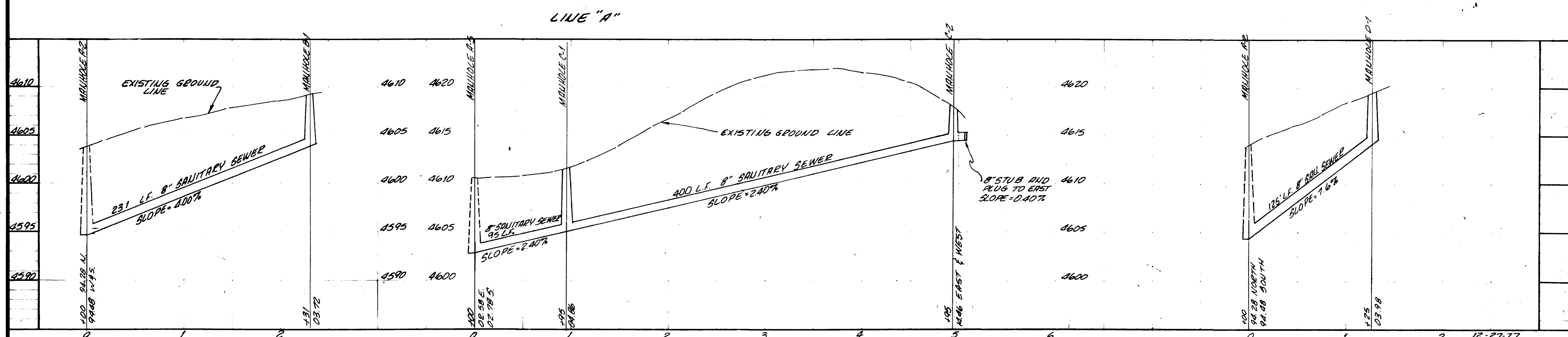
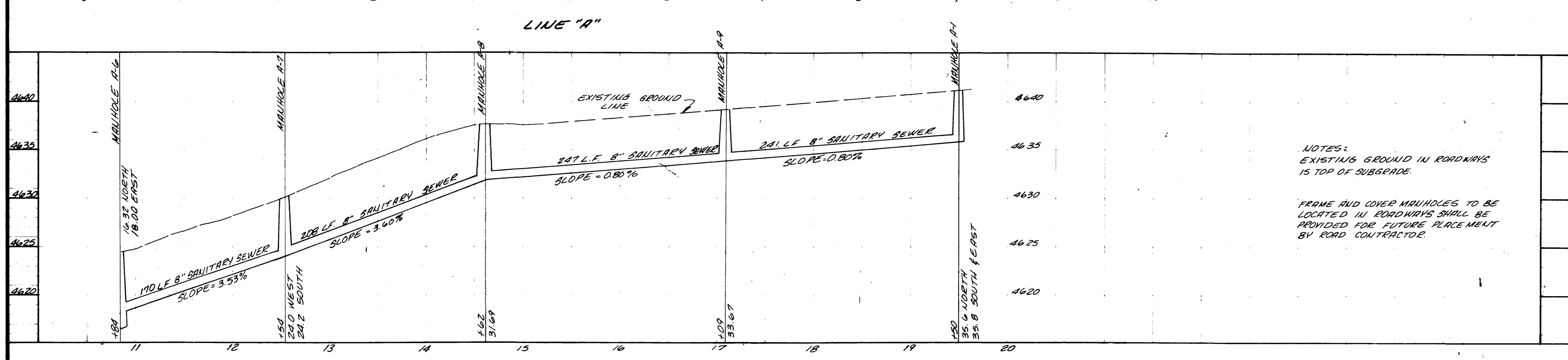
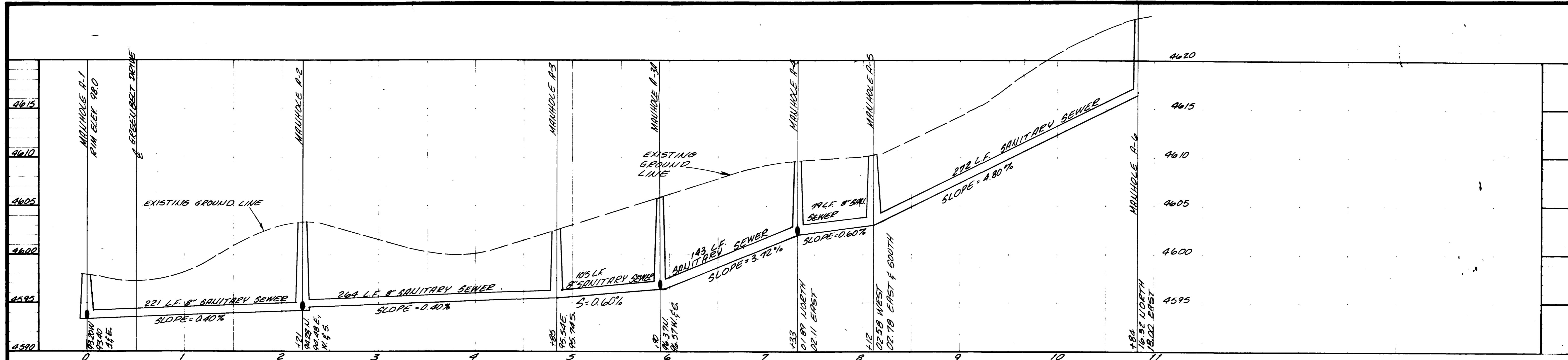
DATE REVISED: \_\_\_\_\_  
 SCALE: 1" = 50' OR AS SHOWN  
 ROBERT P. GERLOFS  
 Engineering Consultants  
 SANITARY SEWER PLAN AND DETAILS  
 THE BLUFFS WEST ESTATES  
 FILING NO. ONE  
 MESA COUNTY, COLORADO  
 SHEET 1 OF 2

AS BUILT DRAWINGS  
 12-27-77  
 SCHEDULE 1



AS BUILT DRAWINGS  
 12-29-77  
 SCHEDULE 1

02-877



NOTES:  
 EXISTING GROUND IN ROADWAYS IS TOP OF SUBGRADE.  
 FRAME AND COVER MANHOLES TO BE LOCATED IN ROADWAYS SHALL BE PROVIDED FOR FUTURE PLACEMENT BY ROAD CONTRACTOR.

LINE "B"

LINE "C"

LINE "D"

AS BUILT DRAWING  
 SCHEDULE 1

THE BLUFFS WEST ESTATES  
 FILING NO. ONE  
 MESA COUNTY, COLORADO

SAUNTERY SEWER PROFILES

ROBERT P. GERLOFS  
 Engineering Consultants

DATE REVISED: MAY 1977  
 SCALE: 1"=50' HORIZ.  
 1"=5' VERT.

SHEET 3 OF 3