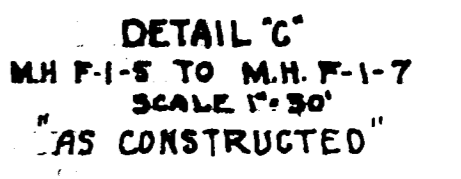
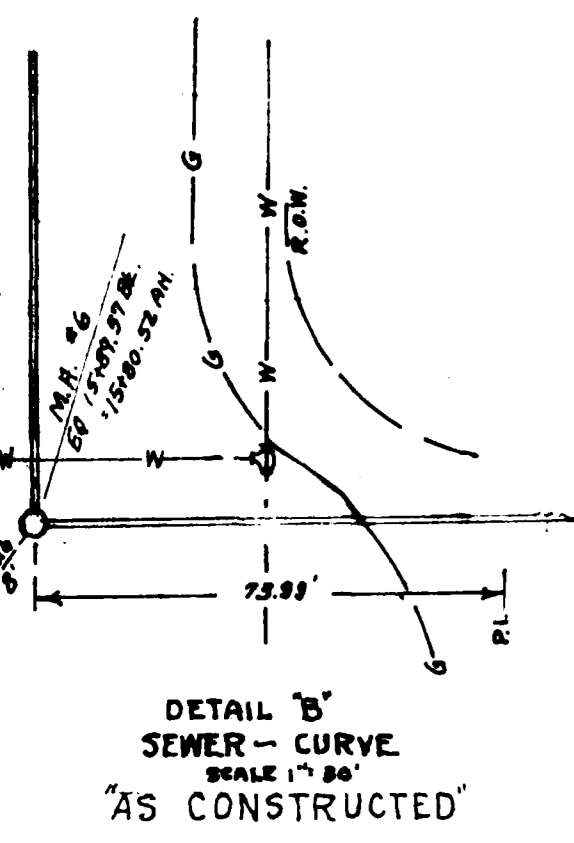
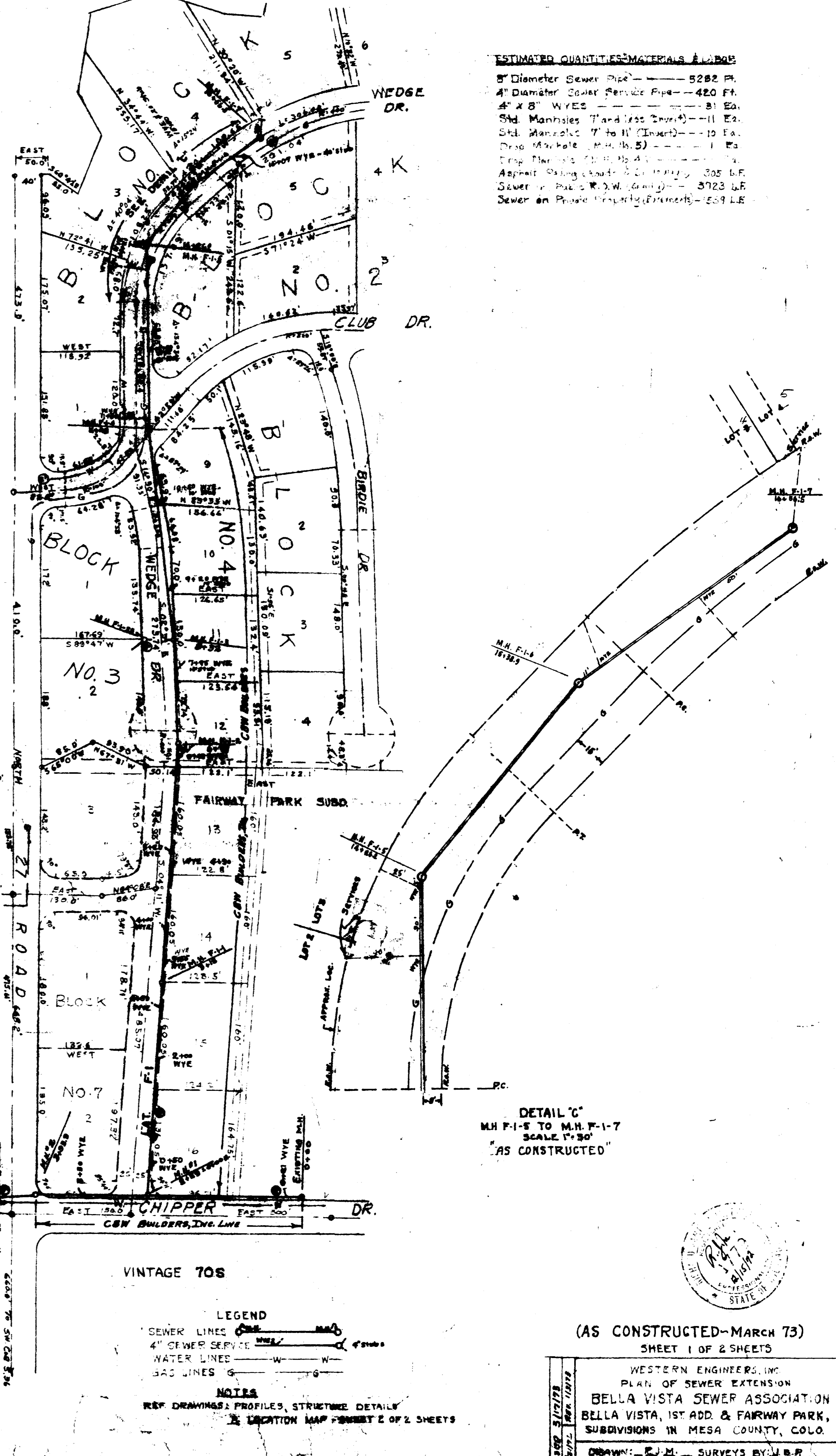
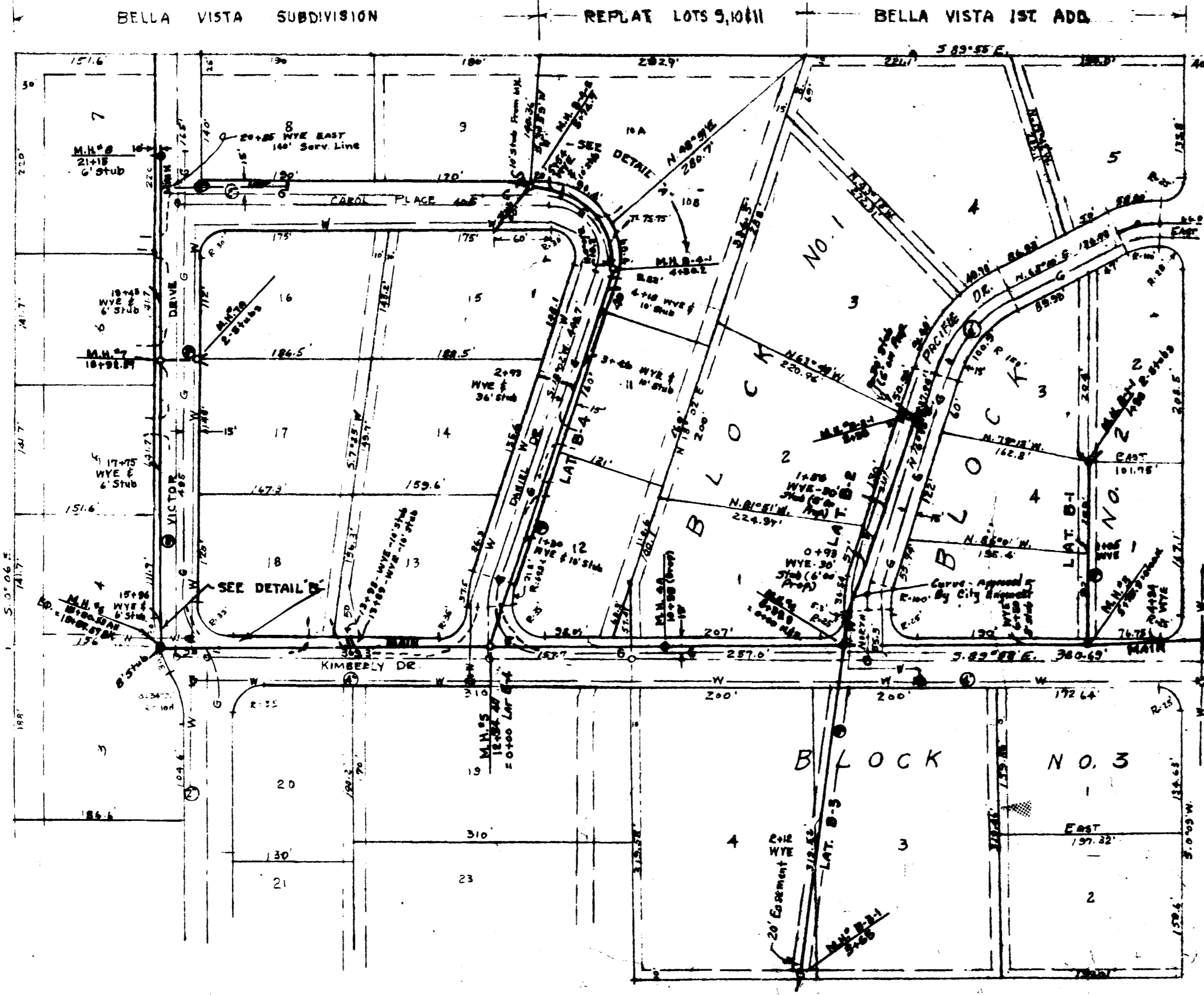
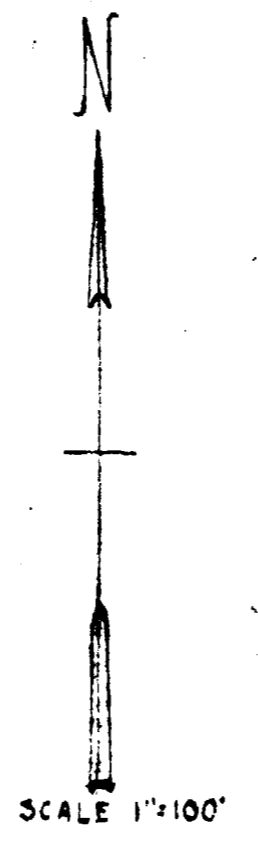
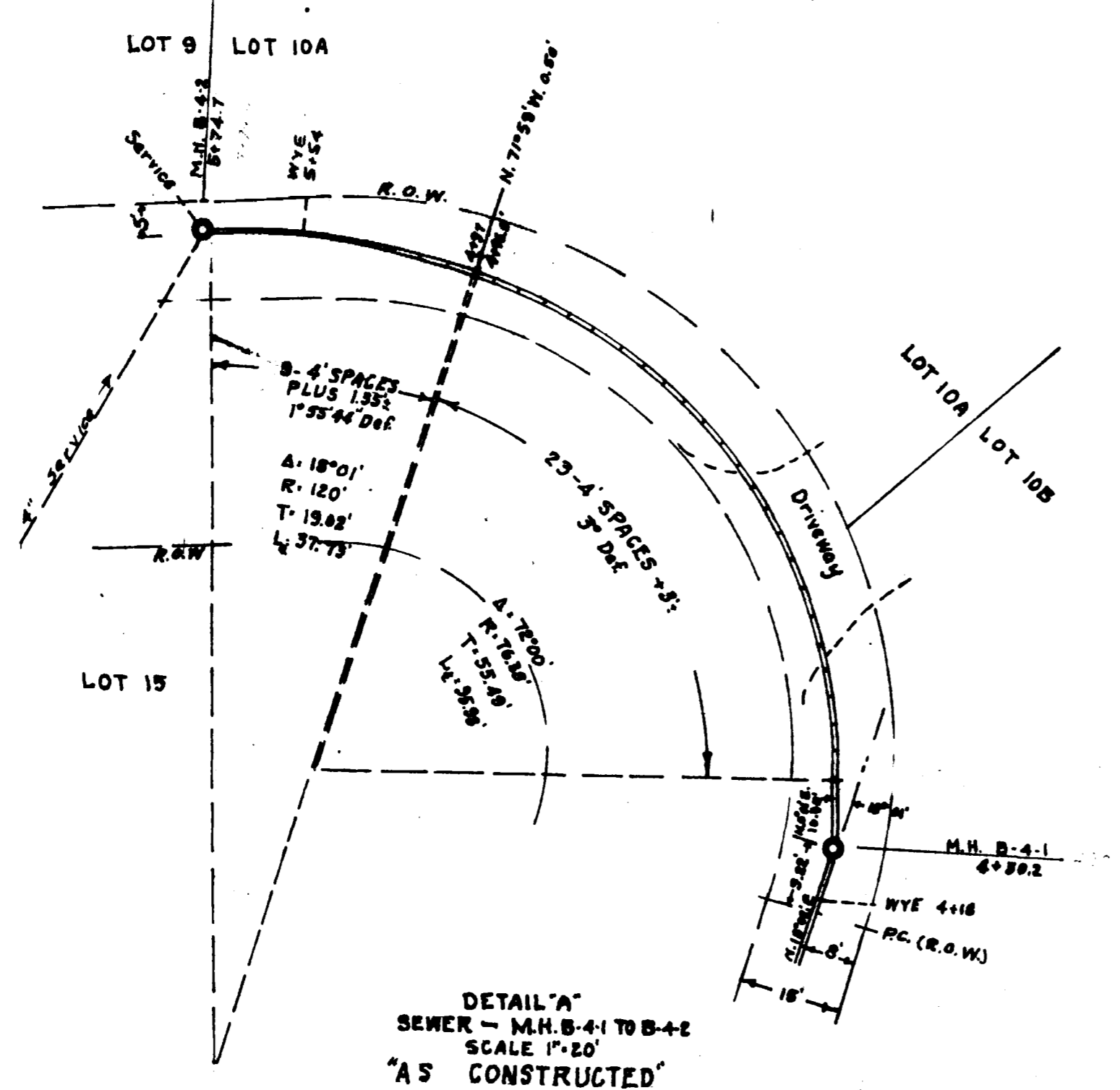


**ESTIMATED QUANTITIES-MATERIALS & LABOR**

- 5" Diameter Sewer Pipe — 5282 LF.
- 4" Diameter Sewer Service Pipe — 420 FT.
- 4" x 8" WYES — 81 Ea.
- Std. Manholes (1 and 1/2 Inset) — 11 Ea.
- Std. Manholes (7 to 11 Inset) — 10 Ea.
- Drop Manhole (M.H. No. 5) — 1 Ea.
- Drop Manhole (M.H. No. 4) — 1 Ea.
- Asphalt Paving (4' x 2' x 1/2") — 305 S.F.
- Sewer on Private Property (Extents) — 5723 LF.
- Sewer on Public Property (Extents) — 559 LF.



VINTAGE 70S

- LEGEND**
- SEWER LINES ———
  - 4" SEWER SERVICE ———
  - WATER LINES ———
  - GAS LINES ———

**NOTES**

REF DRAWINGS: PROFILES, STRUCTURE DETAILS  
& LOCATION MAP SHEET 2 OF 2 SHEETS

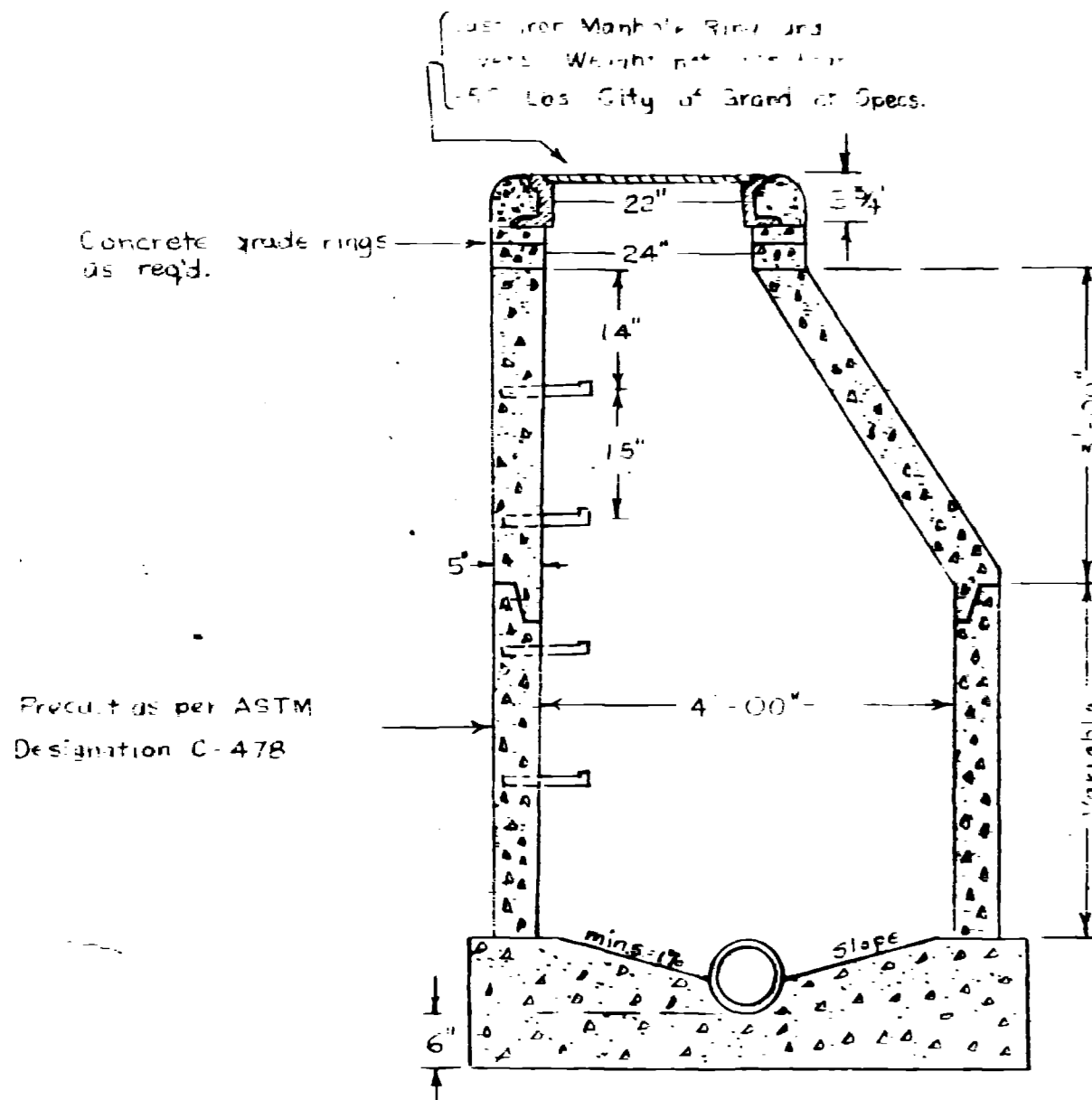


(AS CONSTRUCTED-MARCH 73)  
SHEET 1 OF 2 SHEETS

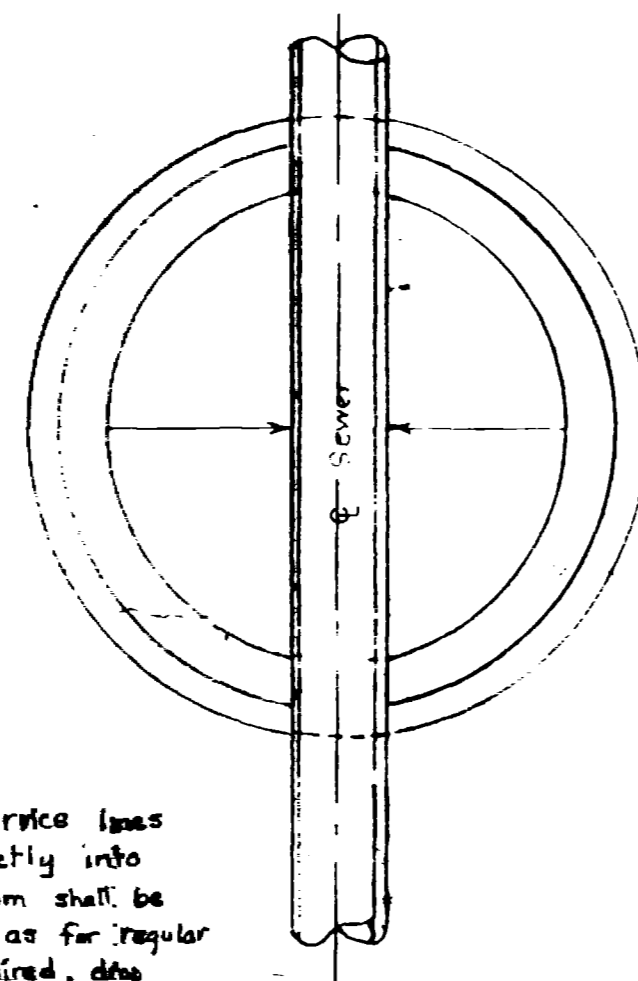
WESTERN ENGINEERS, INC.  
PLAN OF SEWER EXTENSION  
BELLA VISTA SEWER ASSOCIATION  
BELLA VISTA, 1ST ADD. & FAIRWAY PARK,  
SUBDIVISIONS IN MESA COUNTY, COLO.

DRAWN: E.J.M. SURVEYS BY: W.E.P.  
DESIGNED: B.J.M. APPROVED

GRAND JUNCTION, COLO. 1/24/72 Dwg. No. 14370-2

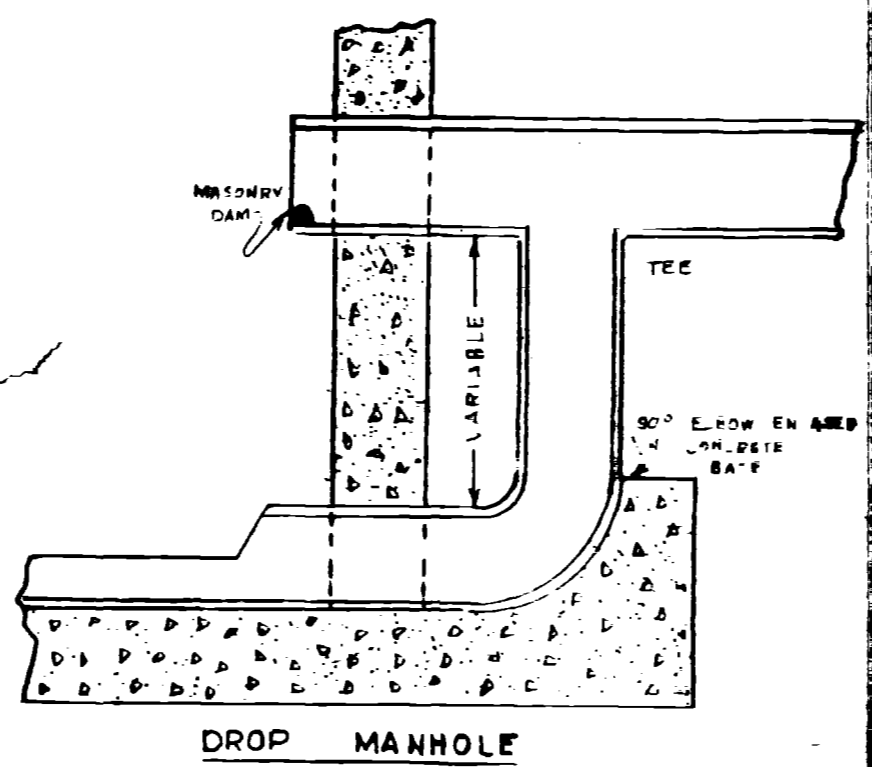


STANDARD MANHOLE



MANHOLE BASE

NOTE: Where service lines are brought directly into manholes, the bottom shall be sloped the same as for regular sewer lines. If required, drop piping shall be furnished.



DROP MANHOLE

**SPECIFICATIONS**

General: Unless otherwise noted, the construction shall conform to the specifications of the City of Grand Junction, Colorado, Chapter 2, Design Specifications, and the American Society of Civil Engineers, Manual of Practice for Sanitary Sewerage Systems, 19th Edition, 1970, and the American Society of Civil Engineers, Manual of Practice for Storm Sewerage Systems, 1970, and the American Society of Civil Engineers, Manual of Practice for Sanitary Sewerage Systems, 1970, and the American Society of Civil Engineers, Manual of Practice for Storm Sewerage Systems, 1970.

Materials: Steel Pipe and Fittings shall conform to the specifications of the American Society of Mechanical Engineers, Specification for Steel Pipe, Part 1, 1989, and the American Society of Mechanical Engineers, Specification for Steel Fittings, Part 1, 1989.

Concrete: Concrete shall conform to the specifications of the American Concrete Institute, Building Code Requirements for Structural Concrete, 1989, and the American Concrete Institute, Manual of Practice for Concrete Construction, 1989.

Asbestos Cement Pipe: Asbestos Cement Pipe shall conform to the specifications of the American Society of Civil Engineers, Manual of Practice for Sanitary Sewerage Systems, 1970, and the American Society of Civil Engineers, Manual of Practice for Storm Sewerage Systems, 1970.

Vitrified Clay: Vitrified Clay Pipe shall conform to the specifications of the American Society of Civil Engineers, Manual of Practice for Sanitary Sewerage Systems, 1970, and the American Society of Civil Engineers, Manual of Practice for Storm Sewerage Systems, 1970.

Installation: Installation shall conform to the specifications of the American Society of Civil Engineers, Manual of Practice for Sanitary Sewerage Systems, 1970, and the American Society of Civil Engineers, Manual of Practice for Storm Sewerage Systems, 1970.

LOCATION MAP

