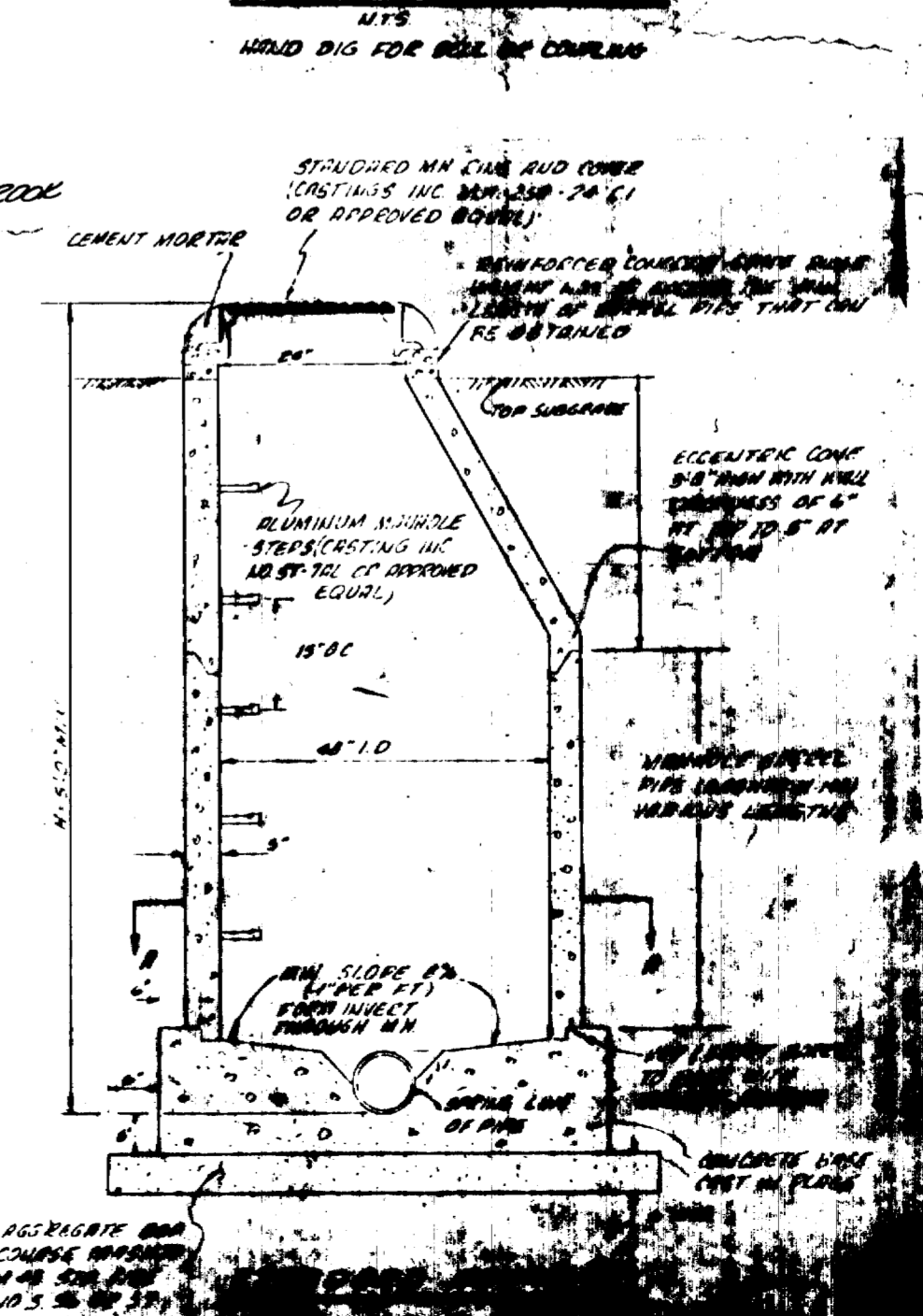
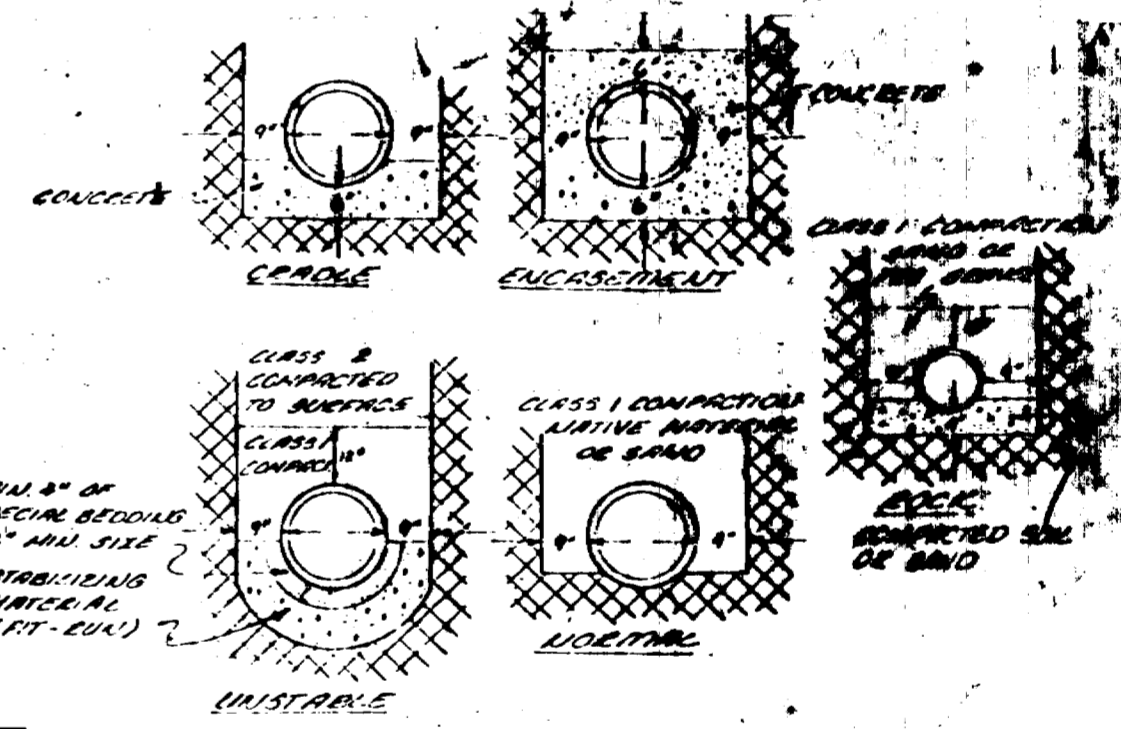
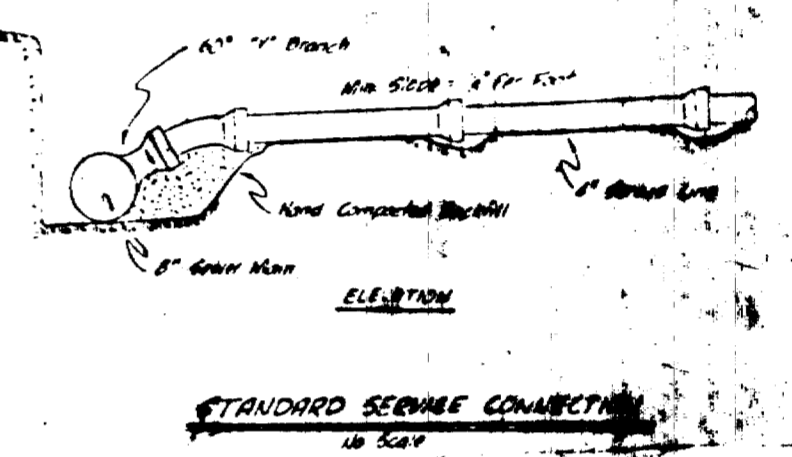
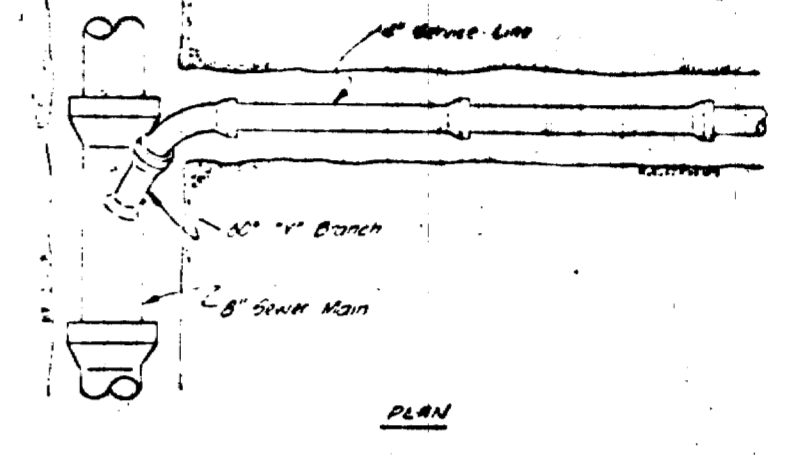
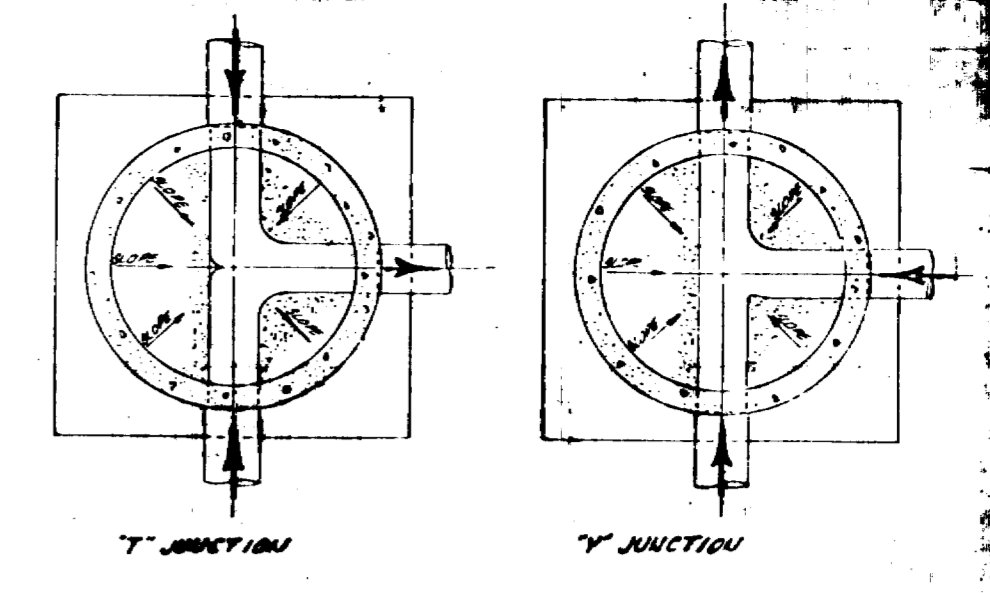
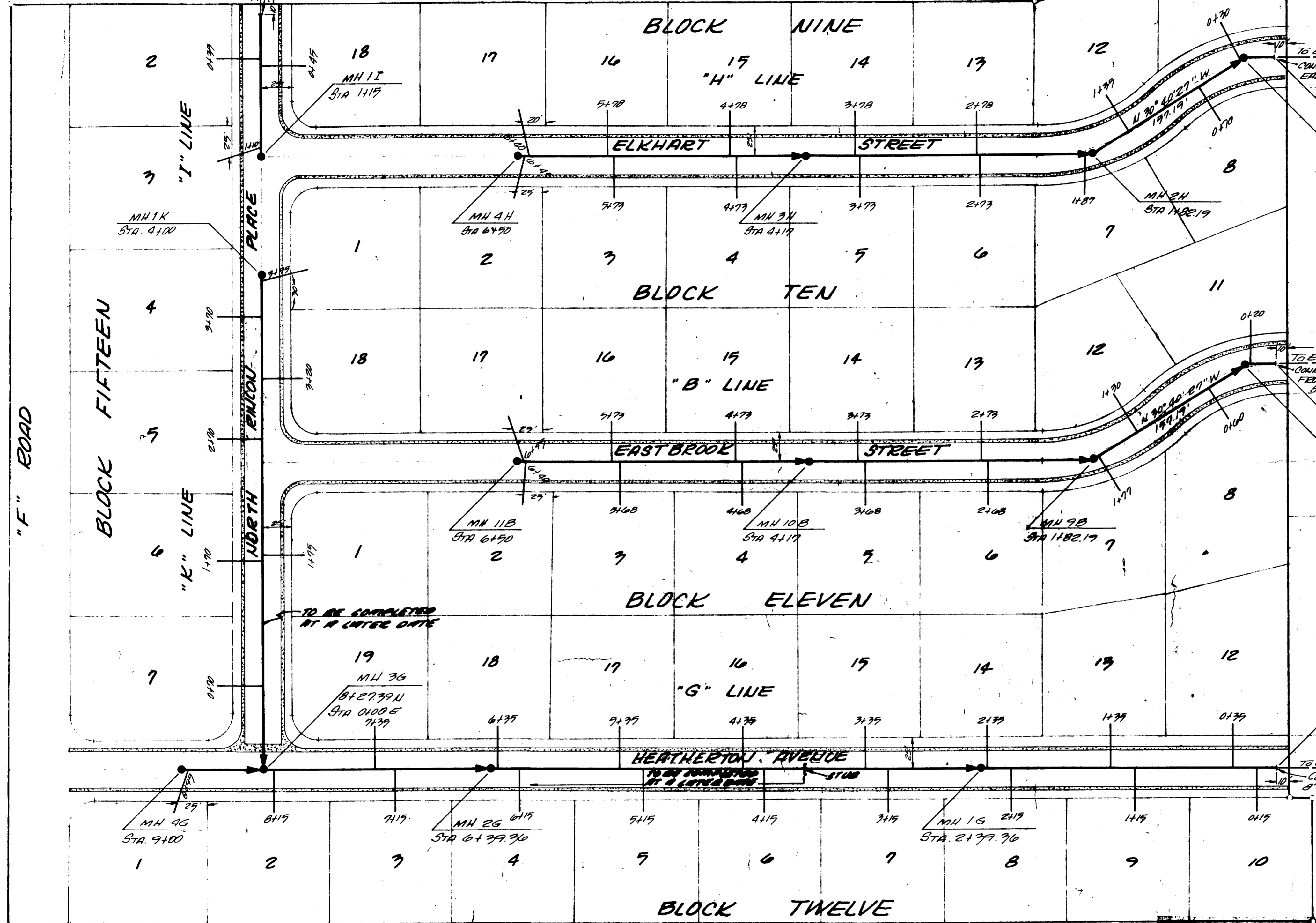


BENCH MARK  
TOP OF BRASS CAP  
NE CORNER OF  
SECTION 9, T15, R1E, UM.  
ELEV = 4714.29



GENERAL NOTES

1. TOP OF ECCENTRIC COLE TO BE SET AT TOP OF SUBGRADE (STREET CONTRACTOR TO SET RIMS TO FINISHED GRADE OF STREET)
2. ALL CONSTRUCTION TO BE IN ACCORDANCE WITH THE CENTRAL GRAND VALLEY SANITATION DIST. SPECIFICATIONS.
3. WATER & SEWER SERVICES WILL BE A MINIMUM OF 10' APART WITH THE WATER SERVICE ON THE UPHILL SIDE OF THE SEWER SERVICE.

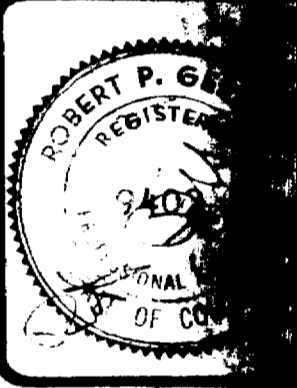
QUANTITIES:  
2915 L.F. OF 8" SANITARY SEWER  
14 STANDARD MANHOLES  
76 SERVICE CONNECTIONS

SCALE: 1" = 50'

DATE  
MARCH  
SCALE  
A3

REVISIONS


PARAGON ENGINEERING, INC.

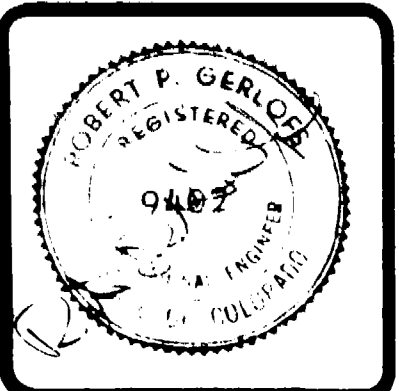


EASTBROOK FILING NO. THREE  
MESA COUNTY, COLORADO

CHECKED  
*Wayne J. Day*  
 DATE  
**MARCH 1979**  
 HORIZ. SCALE VERT.  
 1"=50' 1"=5'

REVISIONS	BY

**PARAGON ENGINEERING, INC.**  
 P.O. Box 2872  
 Grand Junction, Colorado 81501 (303) 243-8966



EASTBROOK FILING NO. THREE  
 MESA COUNTY, COLORADO  
 SANITARY SEWER PROFILES

SHEET  
**2**  
 OF 2 SHEETS

