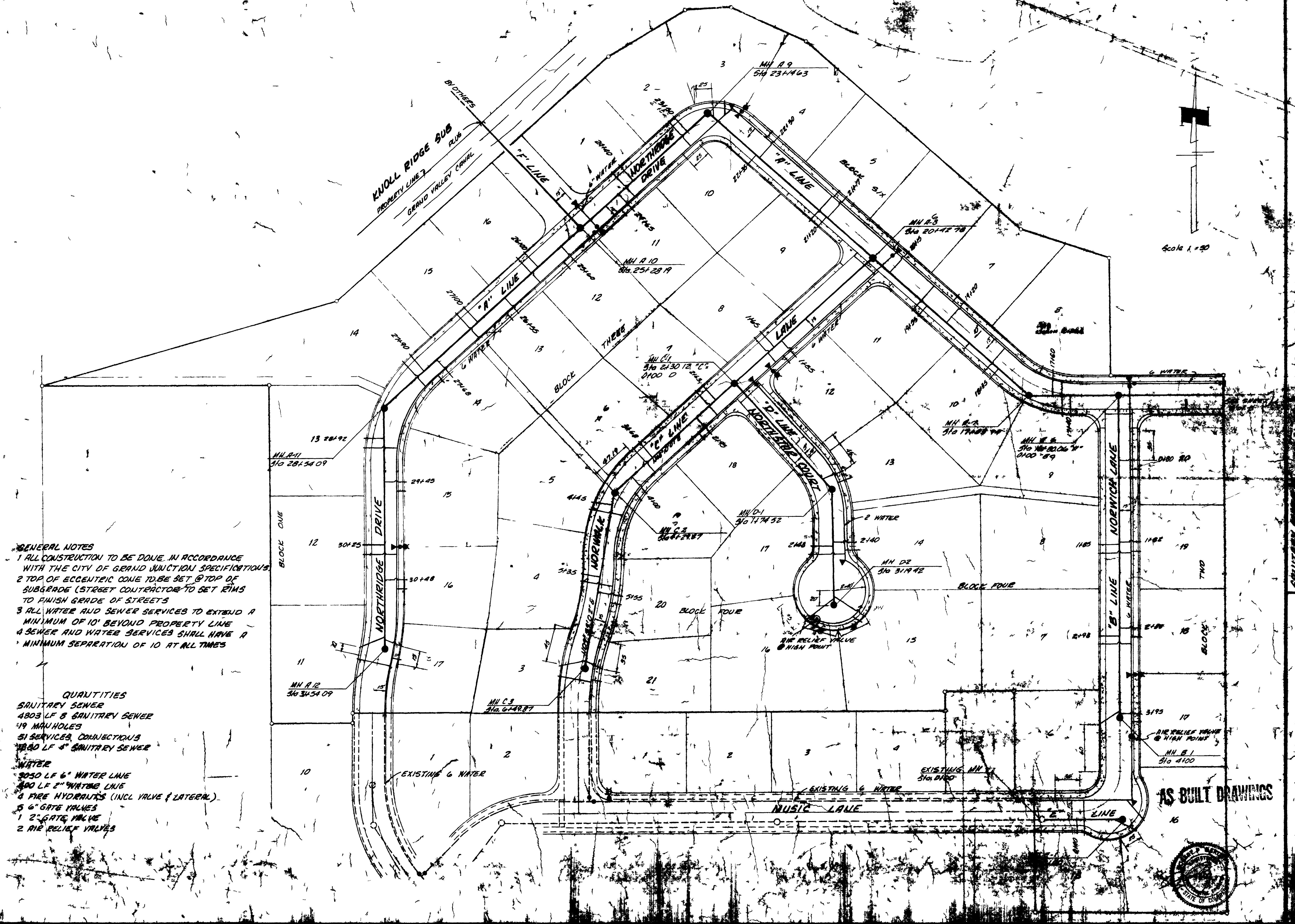


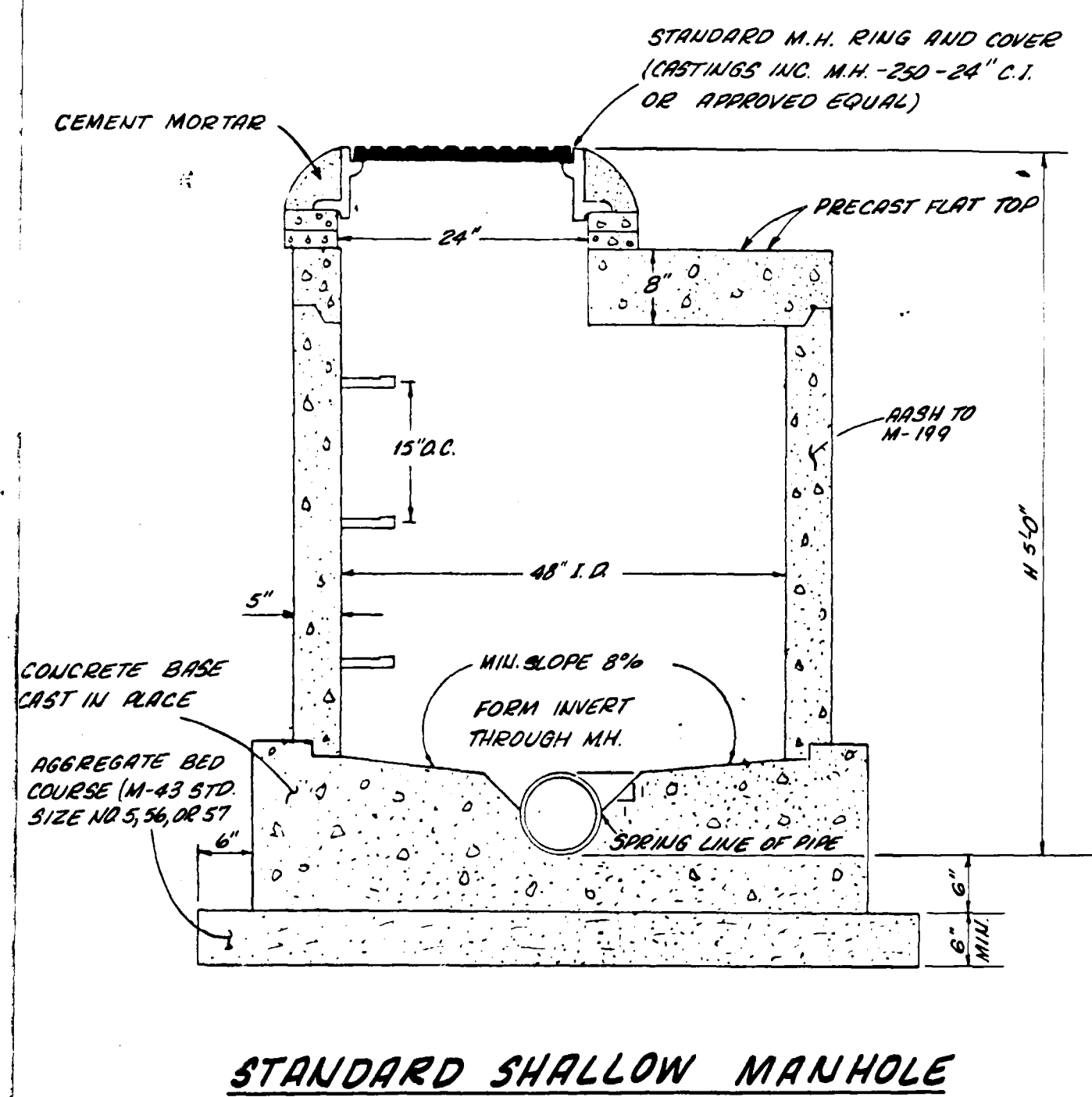
**GENERAL NOTES**  
 1 ALL CONSTRUCTION TO BE DONE IN ACCORDANCE WITH THE CITY OF GRAND JUNCTION SPECIFICATIONS  
 2 TOP OF ECCENTRIC CONE TO BE SET @ TOP OF SUBGRADE (STREET CONTRACTOR TO SET RIMS TO FINISH GRADE OF STREETS)  
 3 ALL WATER AND SEWER SERVICES TO EXTEND A MINIMUM OF 10' BEYOND PROPERTY LINE  
 4 SEWER AND WATER SERVICES SHALL HAVE A MINIMUM SEPARATION OF 10' AT ALL TIMES

**QUANTITIES**  
 SANITARY SEWER  
 4803 LF 8" SANITARY SEWER  
 19 MANHOLES  
 51 SERVICES CONNECTIONS  
 1840 LF 4" SANITARY SEWER  
 WATER  
 3050 LF 6" WATER LINE  
 400 LF 2" WATER LINE  
 4 FIRE HYDRANTS (INCL VALVE & LATERAL)  
 5 6" GATE VALVES  
 1 2" GATE VALVE  
 2 AIR RELIEF VALVES

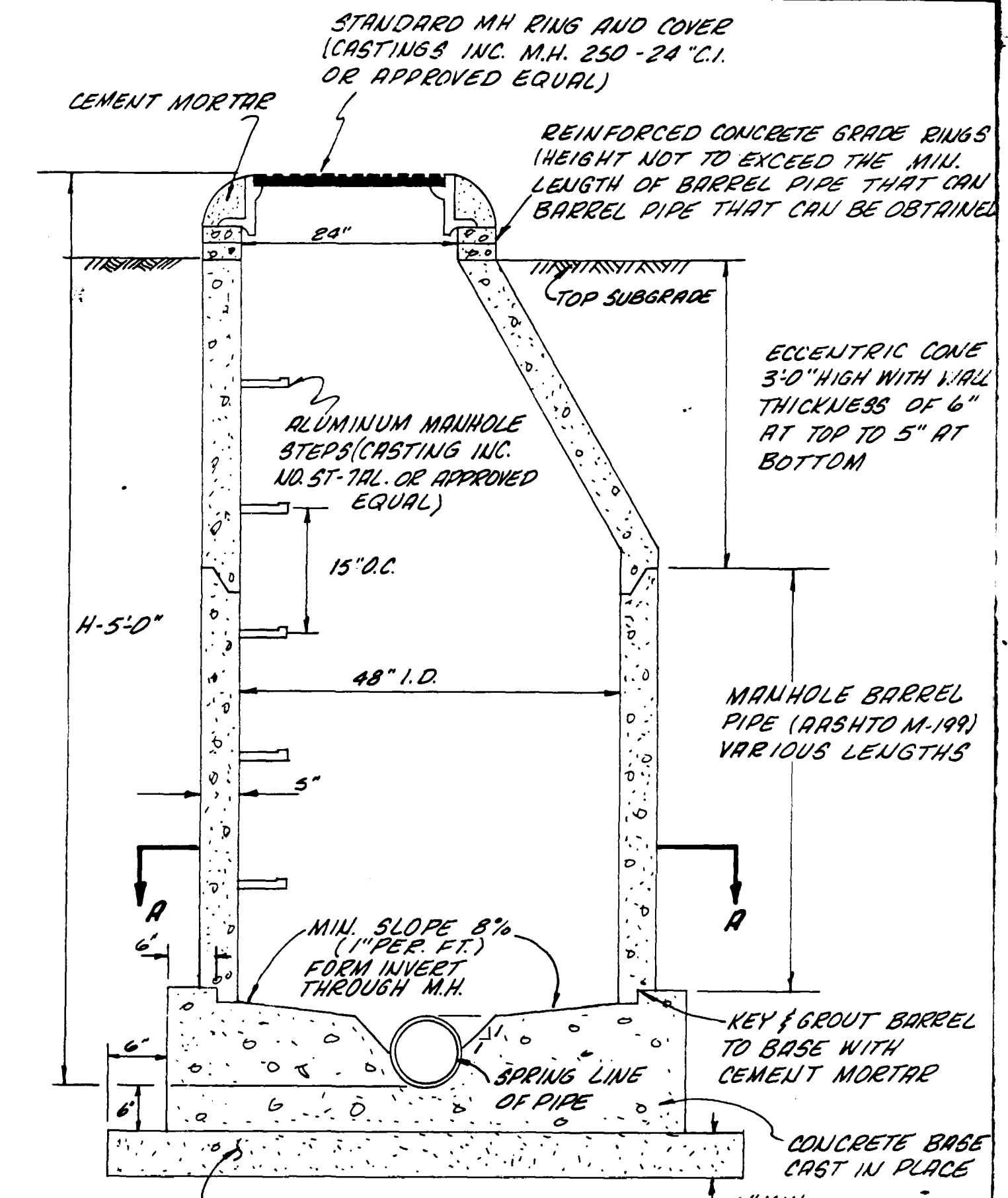


**AS BUILT DRAWINGS**

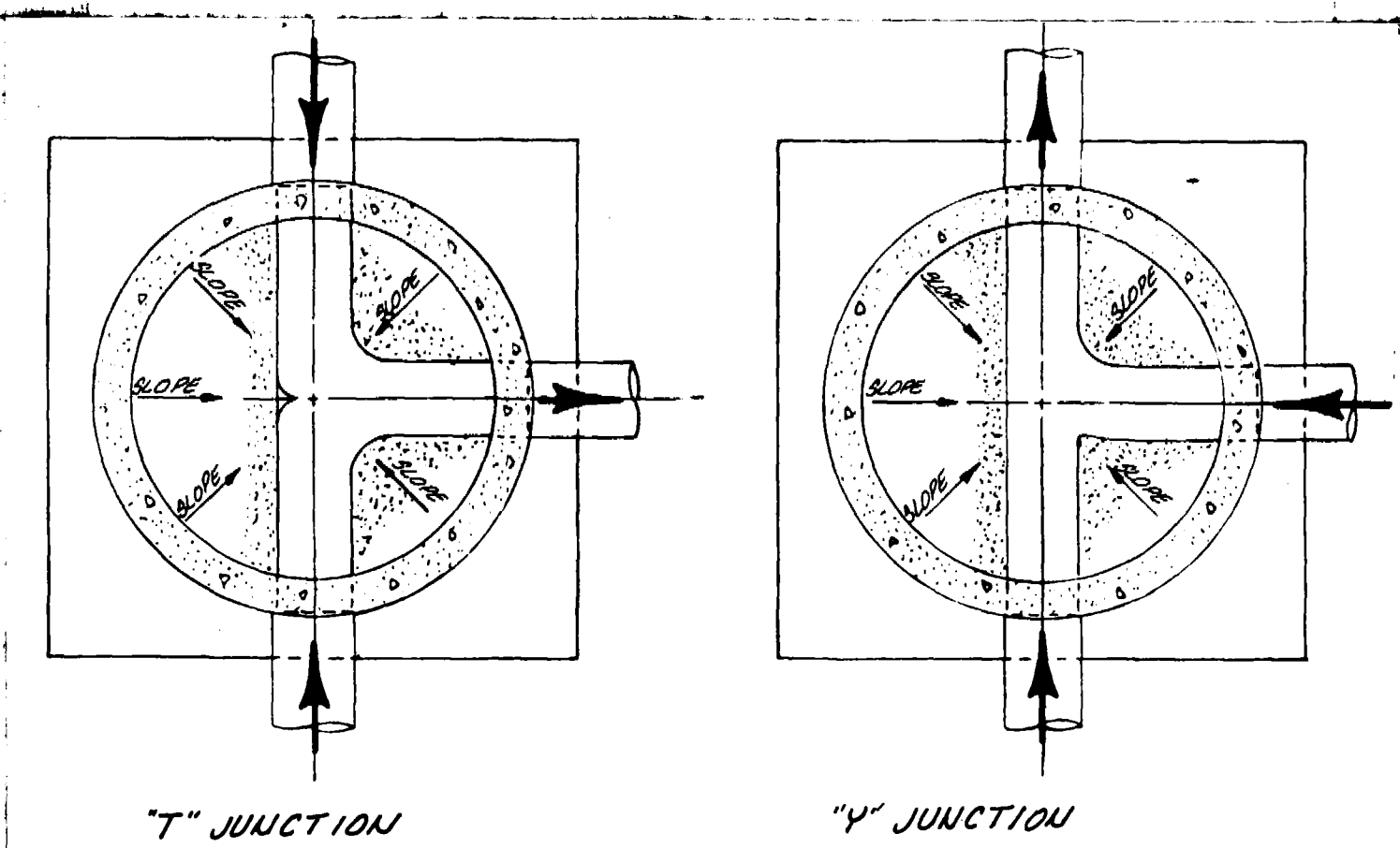




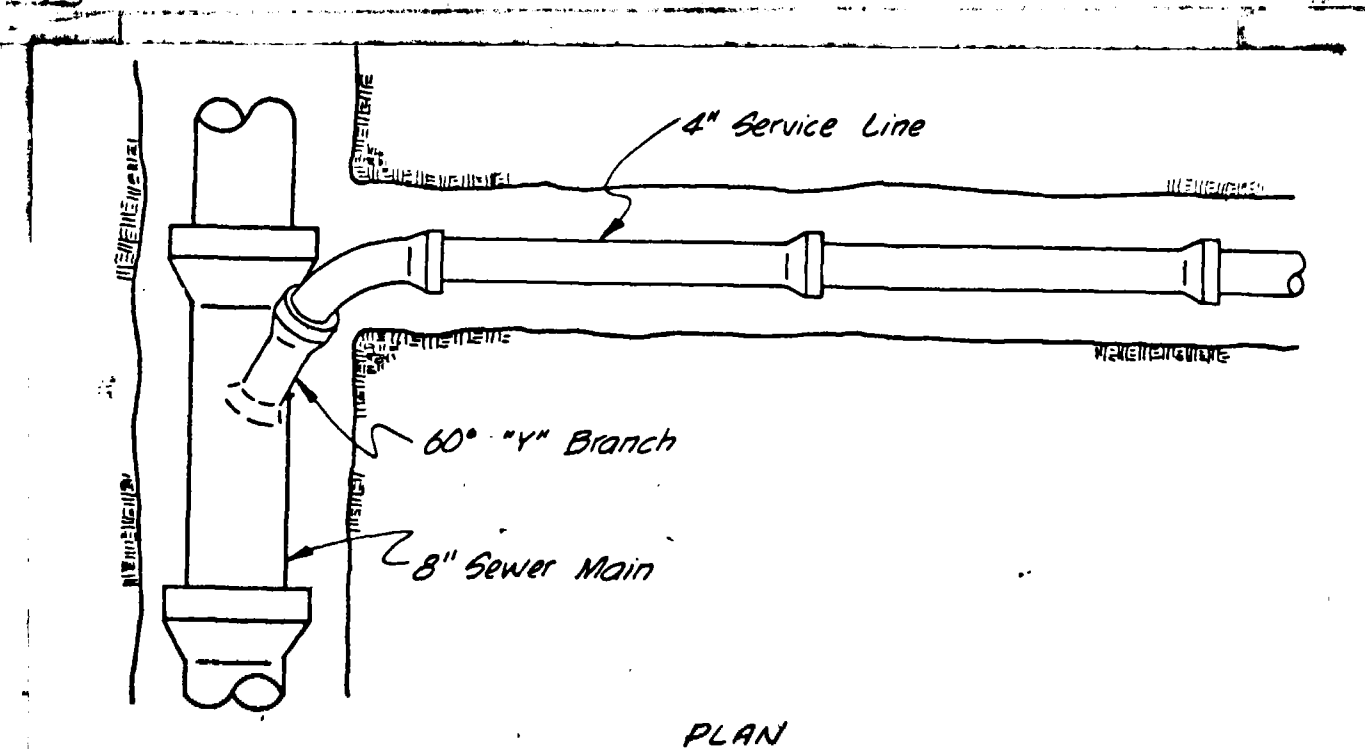
**STANDARD SHALLOW MANHOLE**



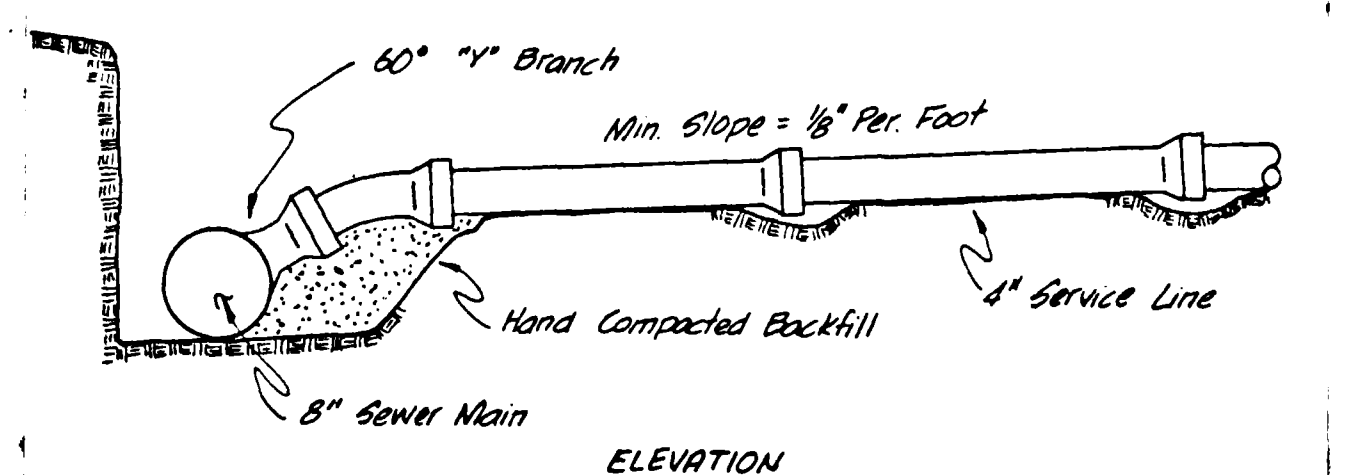
**STANDARD MANHOLE**



**SECTION "A"-R"**

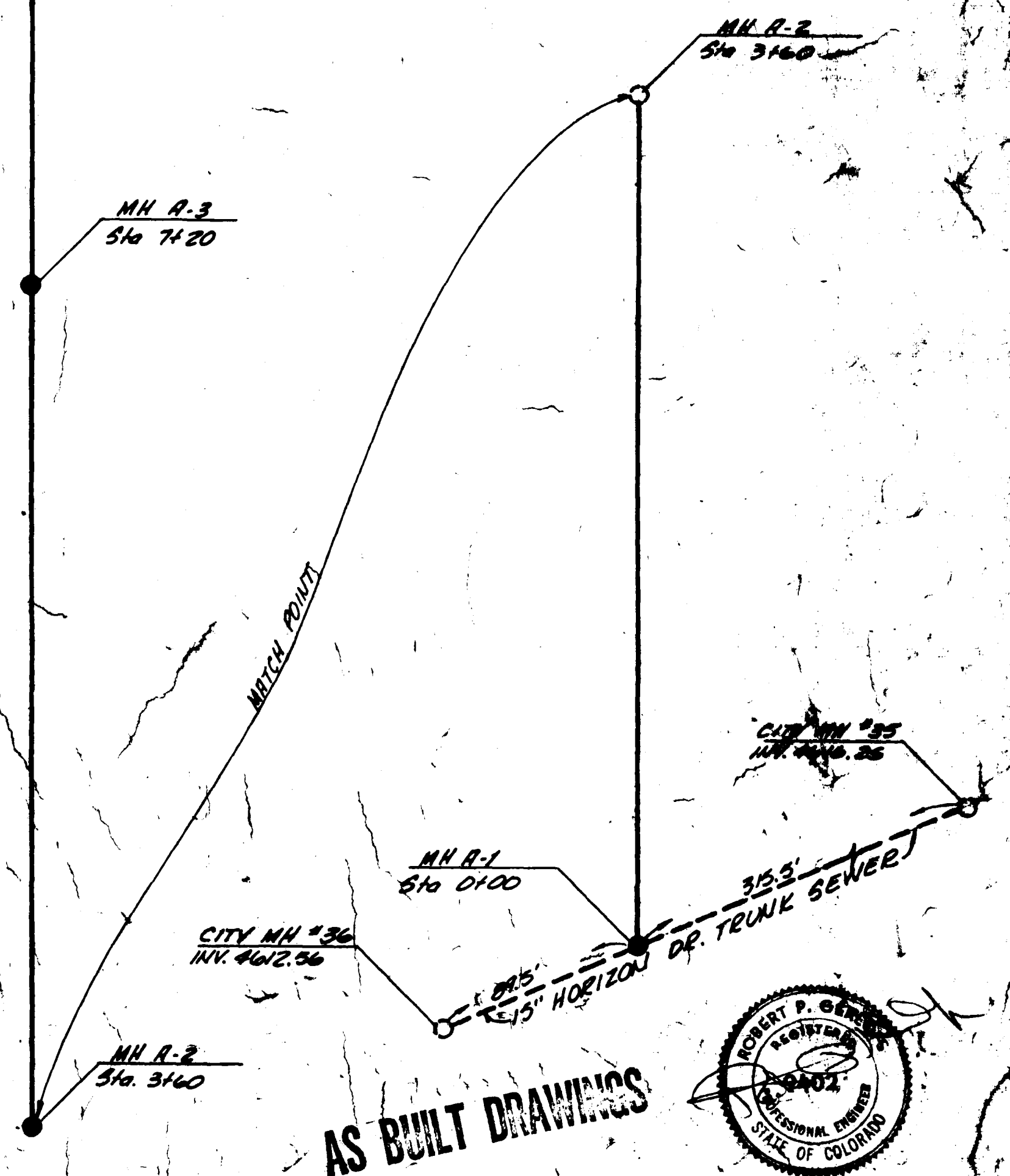
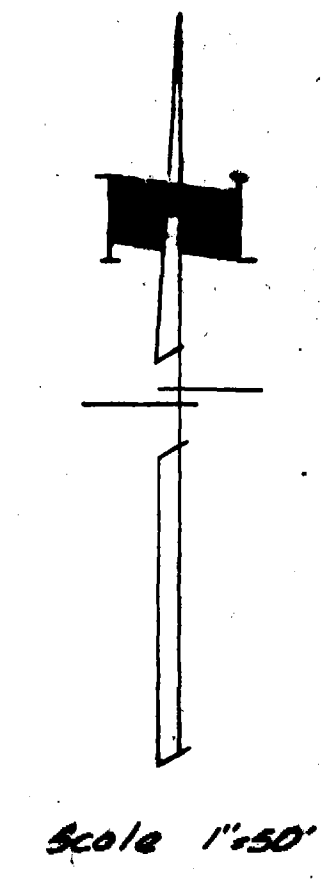
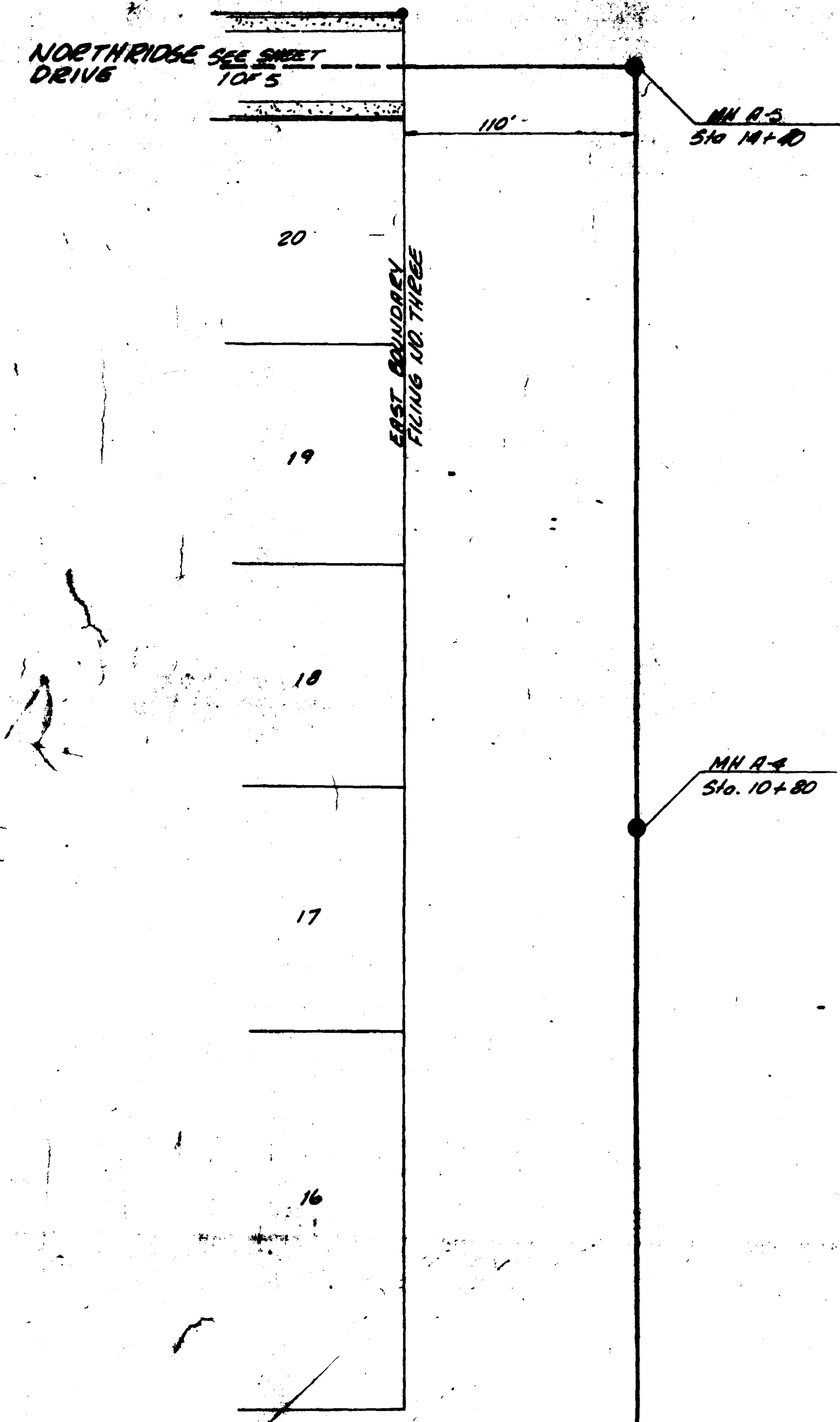


**PLAN**



**ELEVATION**

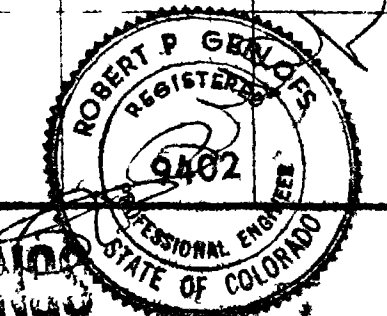
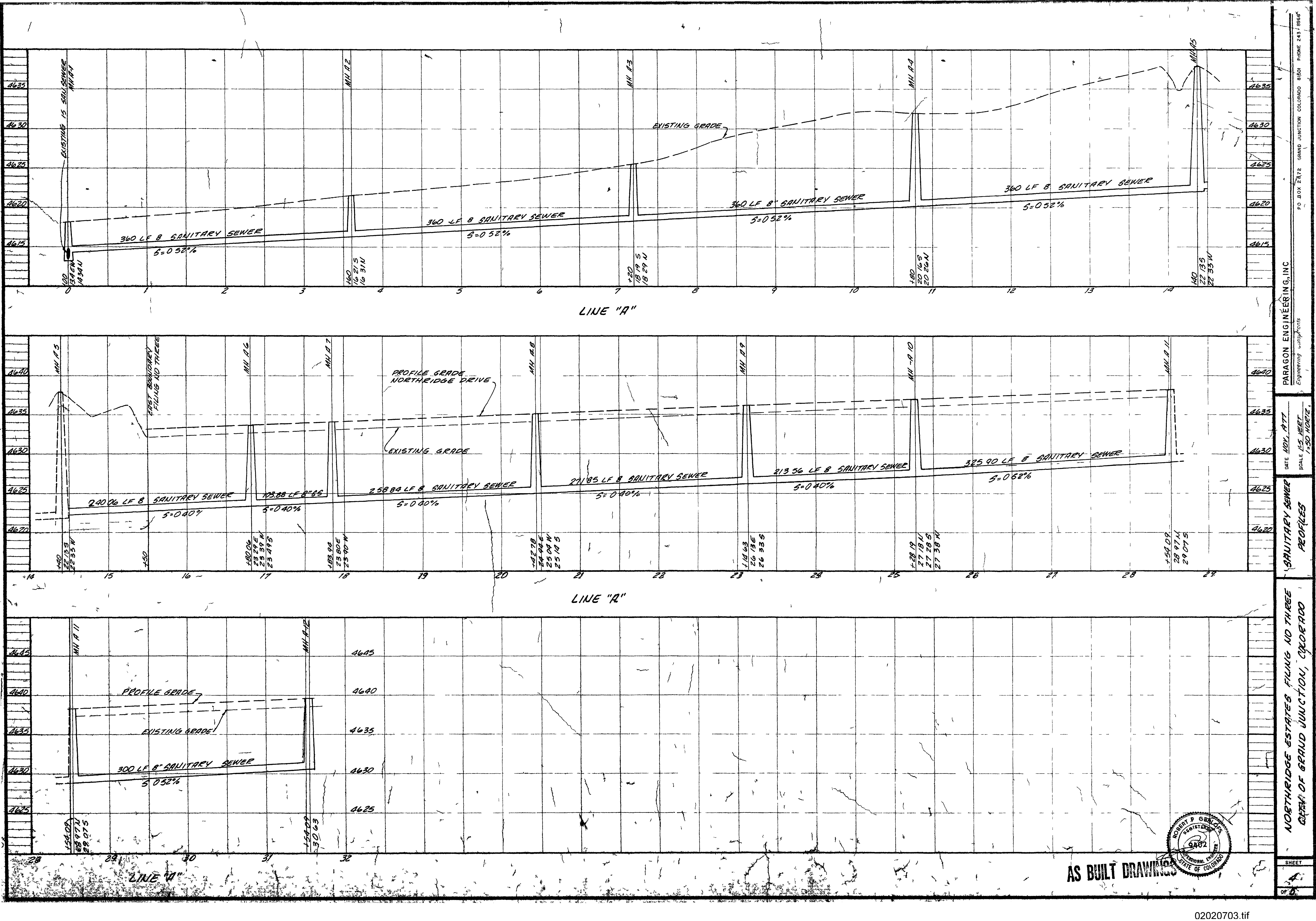
**STANDARD SERVICE CONNECTION**  
No Scale



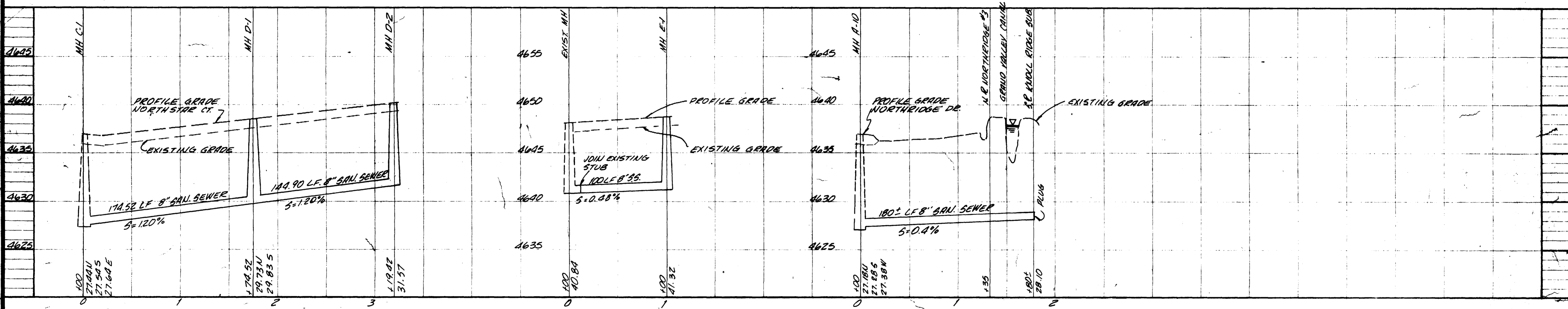
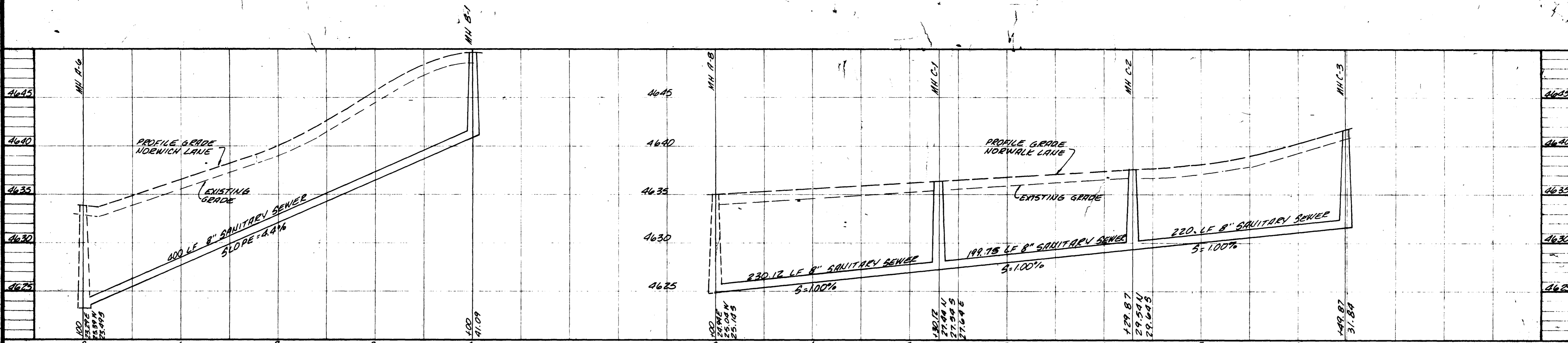
PARAGON ENGINEERING, INC.  
 Engineering Consultants  
 1001 W. 10TH AVE., SUITE 100  
 GRAND JUNCTION, COLORADO 81501  
 PHONE 243-1000  
 FAX 243-1001  
 WWW.PARAGON-ENG.COM



**AS BUILT DRAWINGS**



AS BUILT DRAWINGS



AS BUILT DRAWINGS

