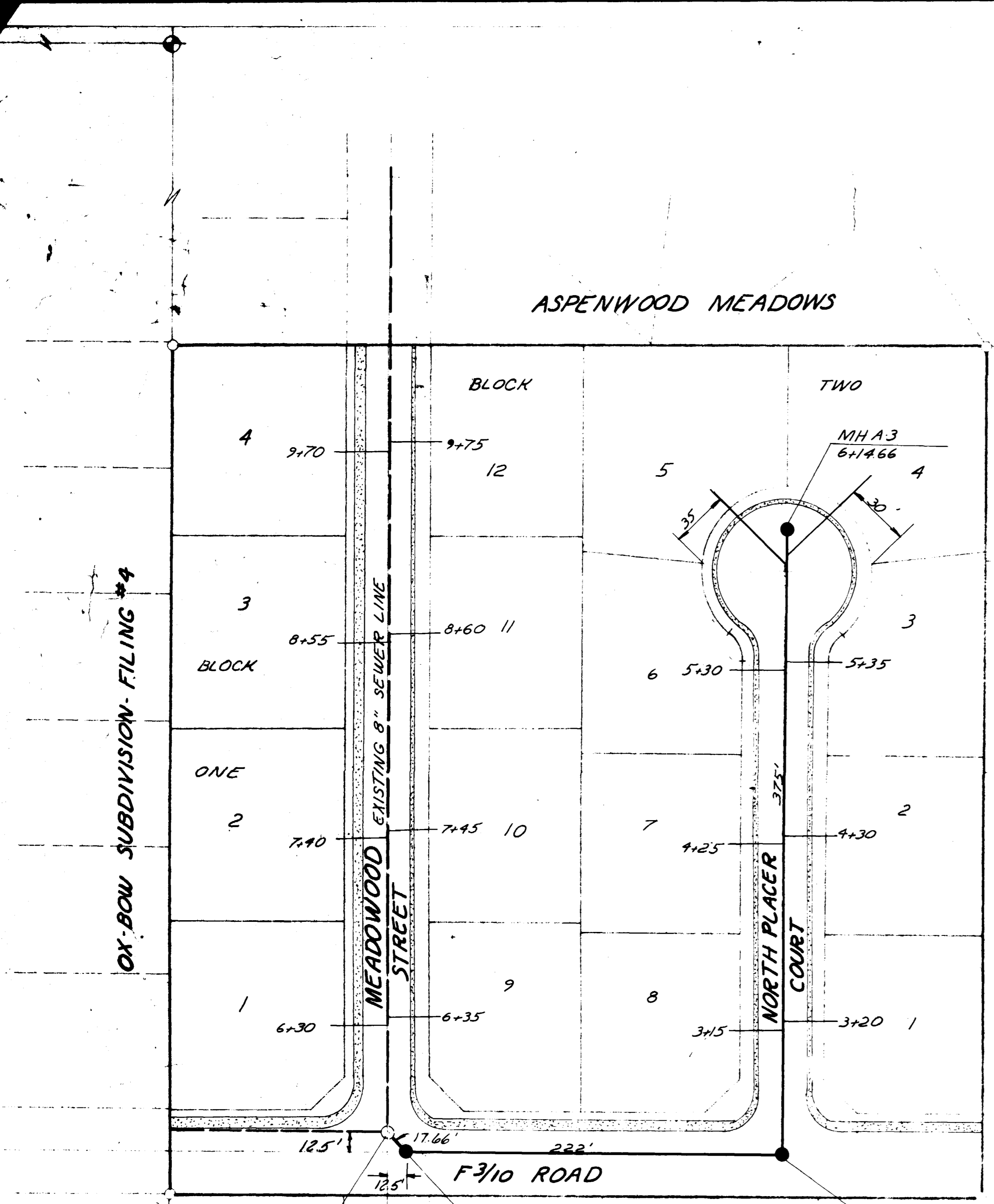


REVISIONS	BY

PARAGON ENGINEERING, INC.
 P.O. Box 2872
 Grand Junction, Colorado 81501 (303) 243-2898

Wayne H. Lizer

SINGLE TREE SUBDIVISION
 GRAND JUNCTION, COLORADO
 SANITARY SEWER
 PLAN & DETAILS



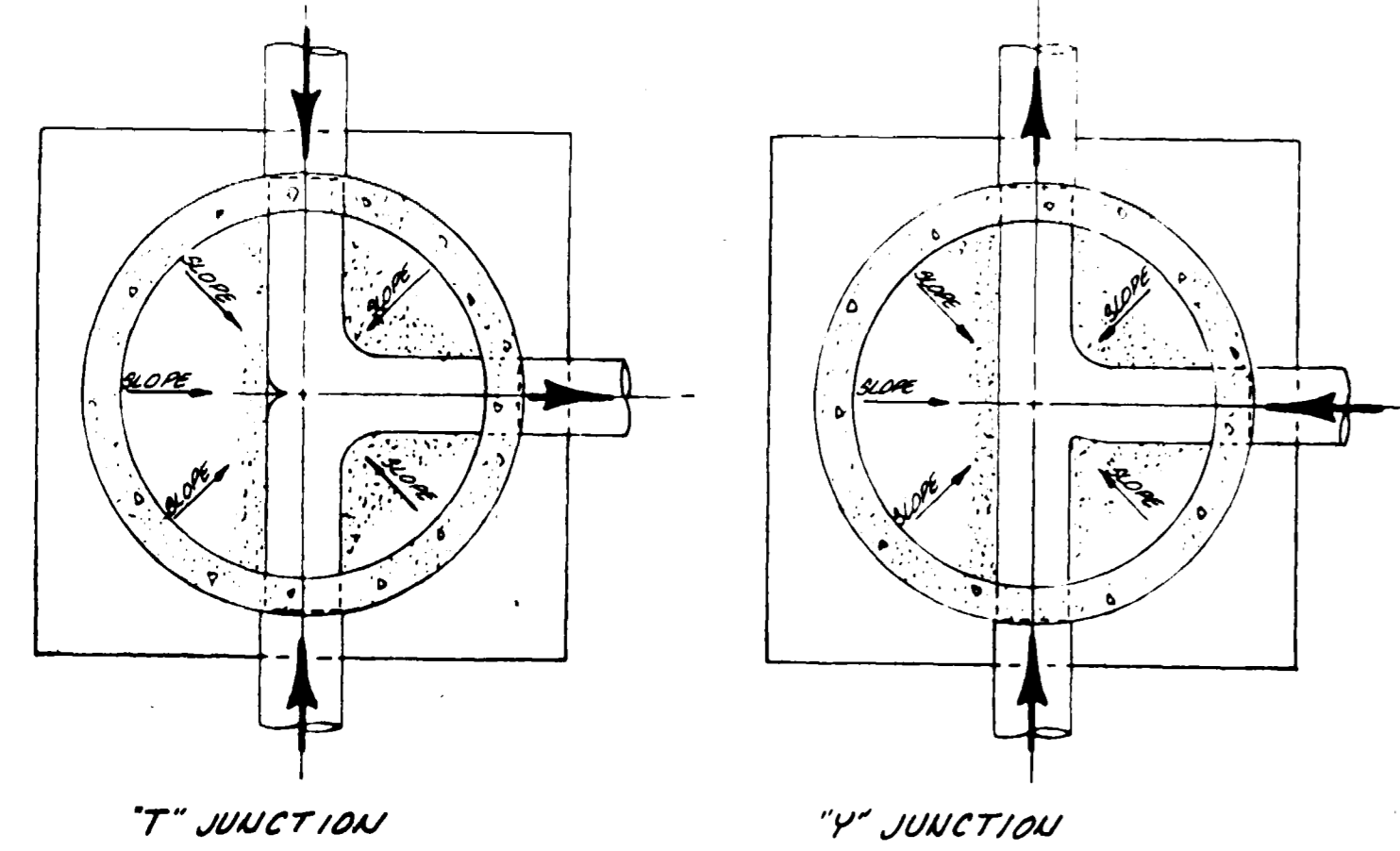
LITTLE TRIO SUBDIVISION
 FIRST ADDITION

LITTLE TRIO SUBDIVISION
 SECOND ADDITION
 SECOND FILING

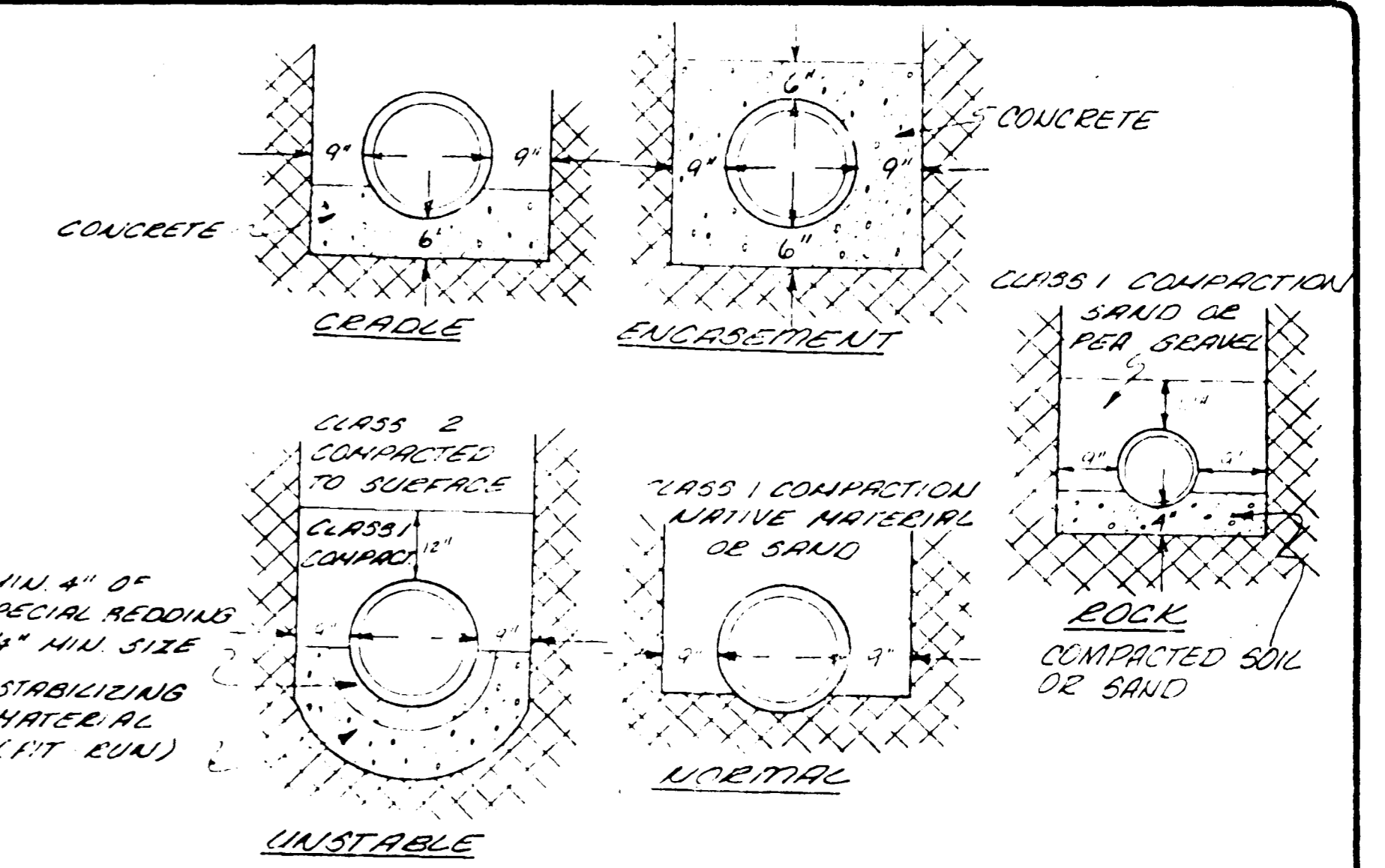
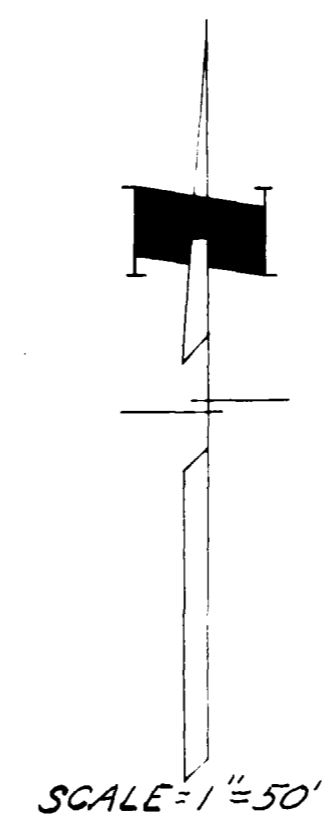
BENCH MARK:
 BRASS CAP AT 30
 AND F3/10 ROAD
 ELEV 970761

GENERAL NOTES
 1. TOP OF ECCENTRIC CONE TO BE SET AT TOP OF SUBGRADE (STREET CONTRACTOR TO SET RIMS TO FINISHED GRADE OF STREET.)
 2. ALL CONSTRUCTION TO BE DONE IN ACCORDANCE WITH THE CENTRAL GRAND VALLEY SANITATION DISTRICT SPECIFICATIONS.

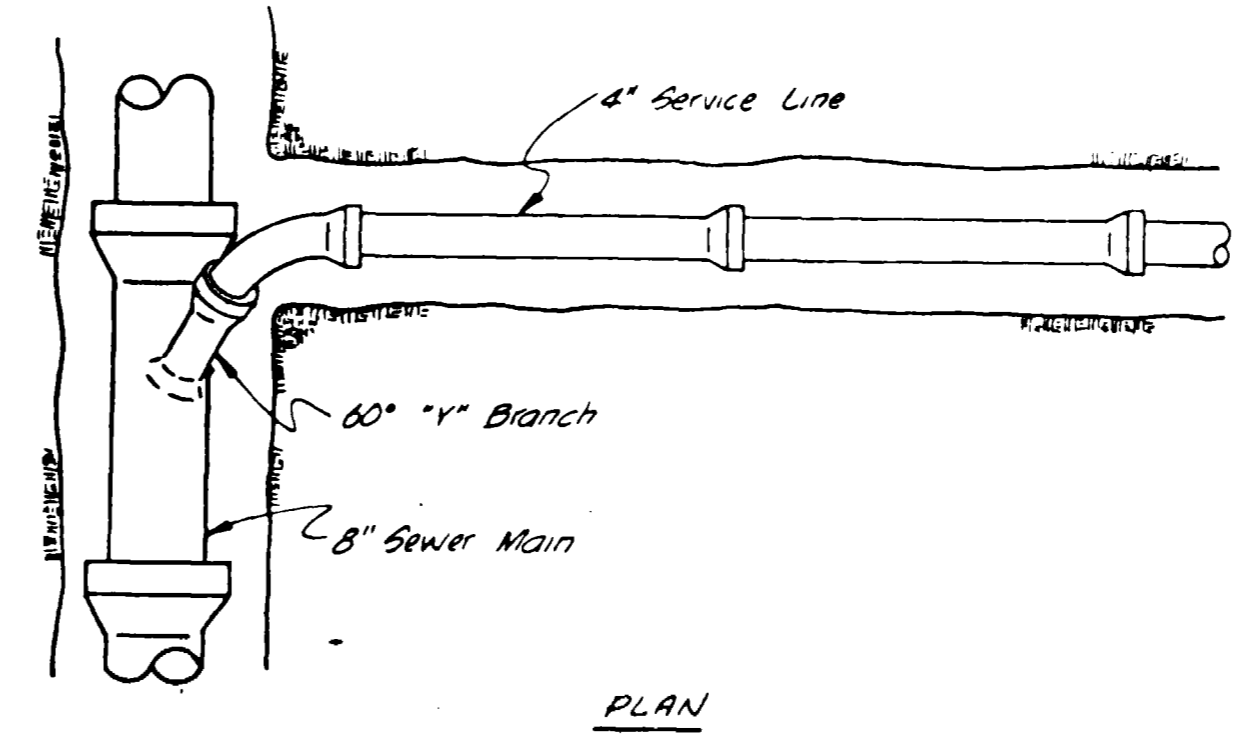
QUANTITIES
 16 - SERVICE CONNECTIONS
 2 - SHALLOW MAN HOLES
 1 - STD MANHOLE'S
 61466 - 8" SAN. SEWER



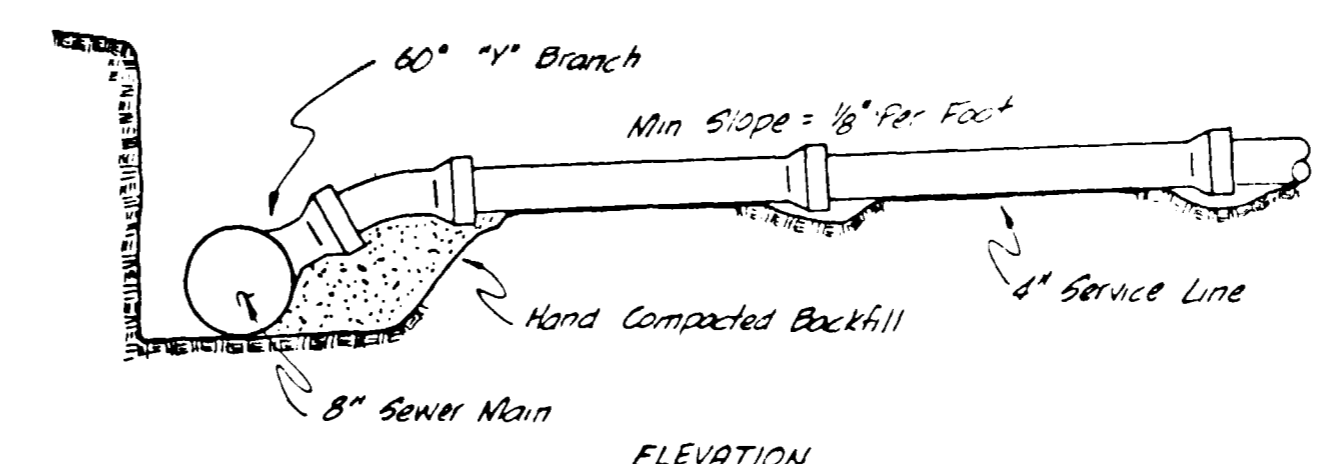
SECTION "A"- "R"



TYPICAL BEDDING DETAIL
 N.T.S.
 HAND DIG FOR BELL OR COUPLING

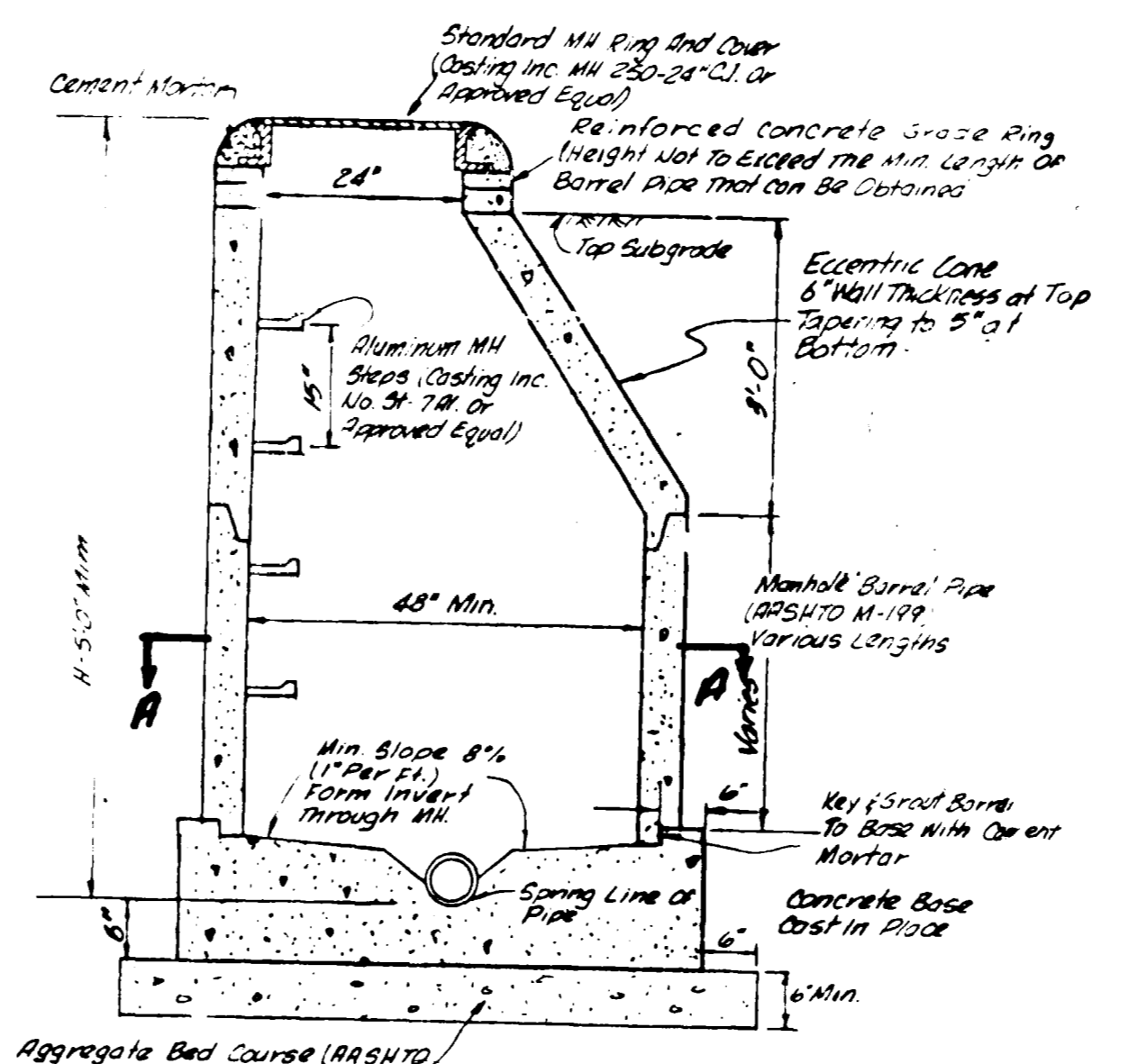


PLAN

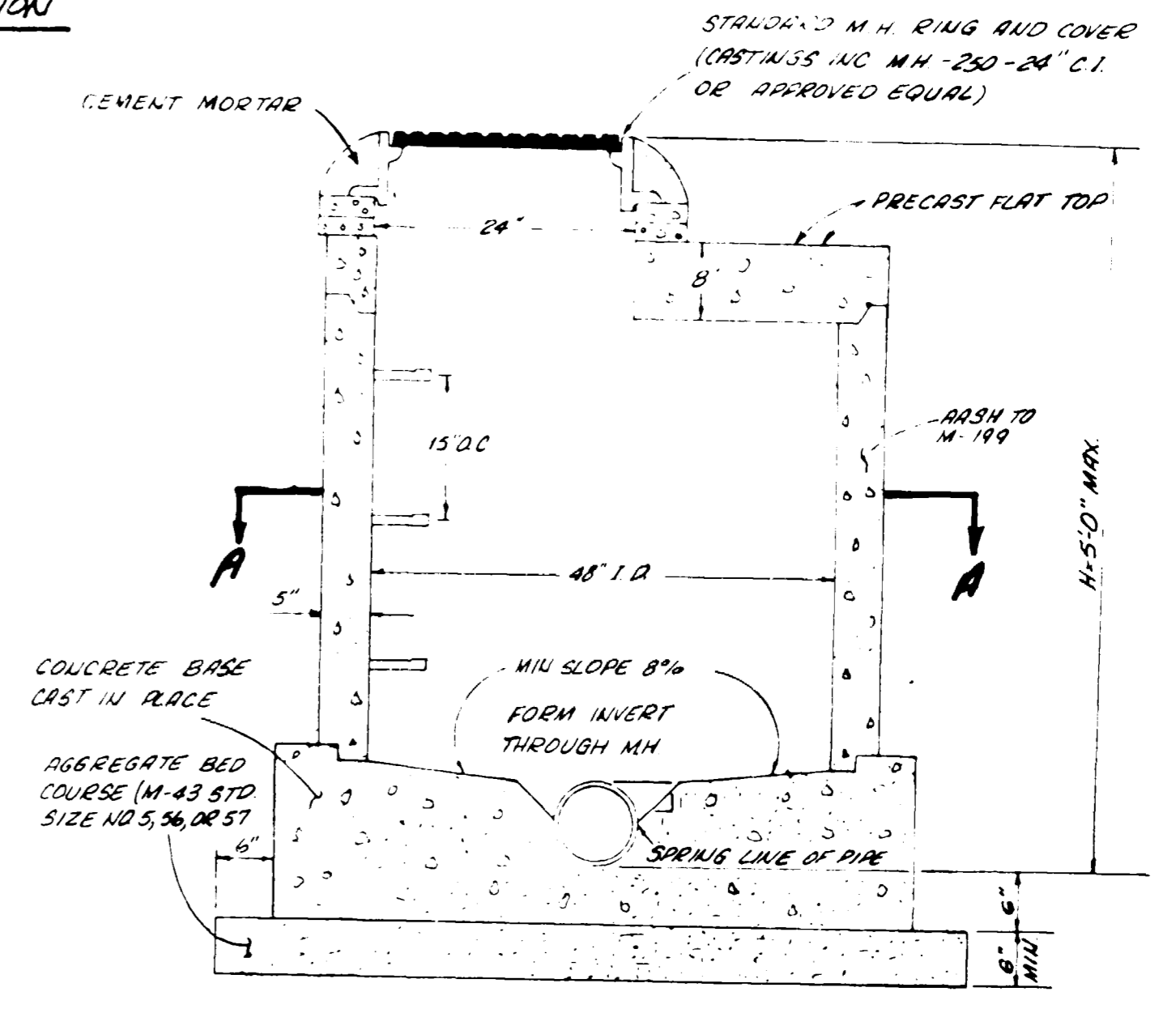


ELEVATION

STANDARD SERVICE CONNECTION
 No Scale



STANDARD MANHOLE



STANDARD SHALLOW MANHOLE


NOTE:
 This is to certify that the system infiltration does not exceed 200 gallons per inch diameter per mile of length per day.

AS BUILT DRAWINGS

CHECKED
 WAYNE H. LITZ
 DATE
 MARCH 8, 1979
 SCALE
 1" = 5' VERT, 1" = 50' HOR

REVISIONS	BY

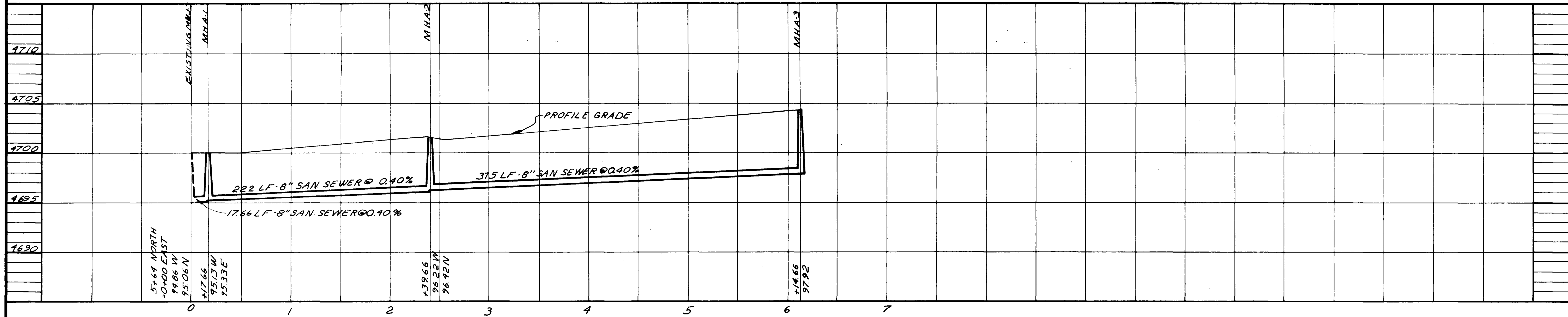
PARAGON ENGINEERING, INC.
 P.O. Box 2872
 Grand Junction, Colorado 81501 (303) 243-8986



Wayne H. Litz

SINGLE TREE SUBDIVISION
 GRAND JUNCTION, COLORADO
 SANITARY SEWER PROFILE

SHEET
 2
 OF 2 SHEETS



AS BUILT DRAWINGS