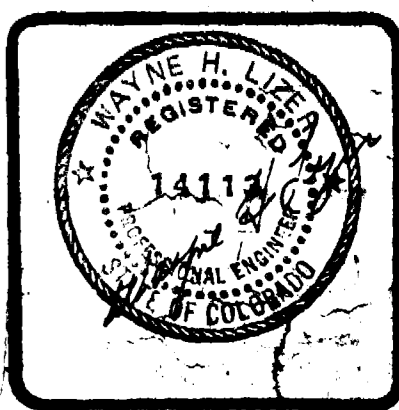
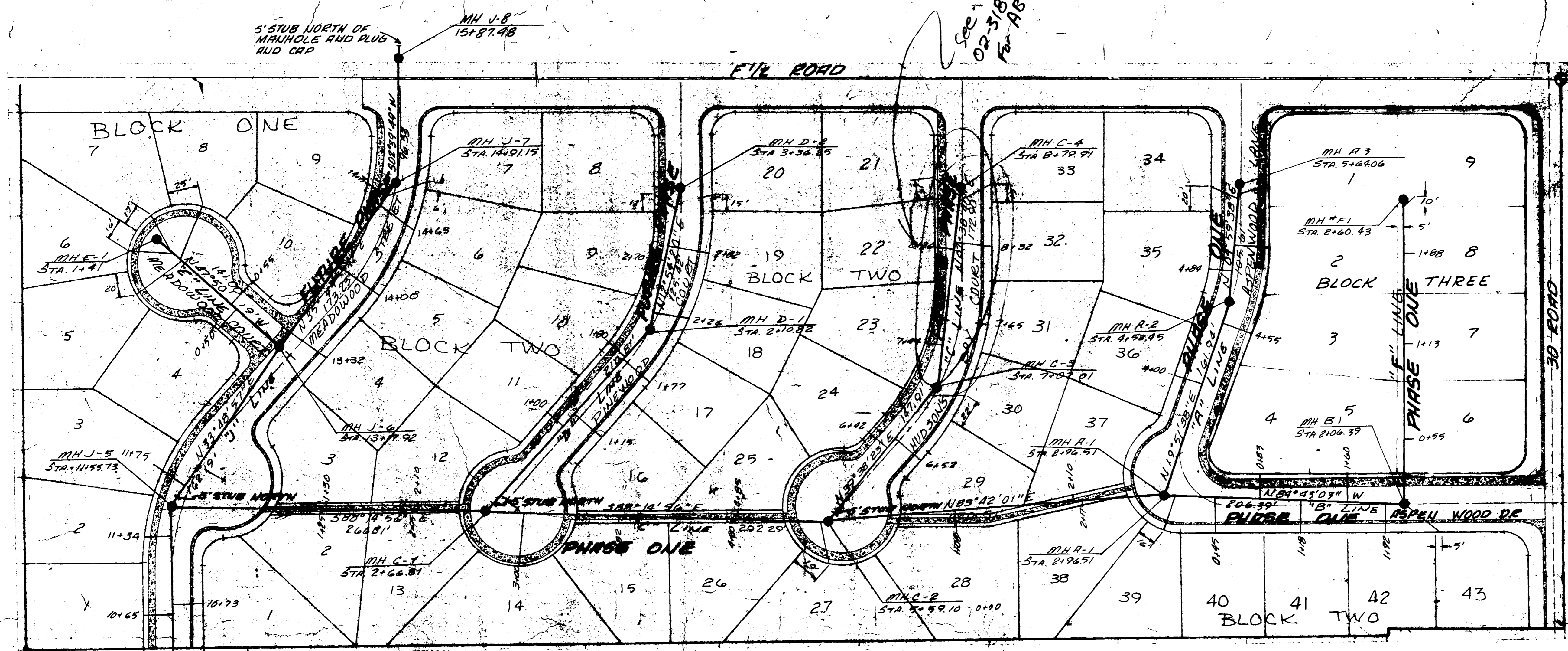


REVISIONS	BY
2/28/79	MHL
ADD MH J-8	
4/13/79	MHL

PARAGON ENGINEERING, INC.  
 P.O. Box 2872  
 Grand Junction, Colorado 81501 (303) 247-6966



ASPEENWOOD MEADOWS SUBDIVISION  
 MESA COUNTY, COLORADO  
 SANITARY JEWEL

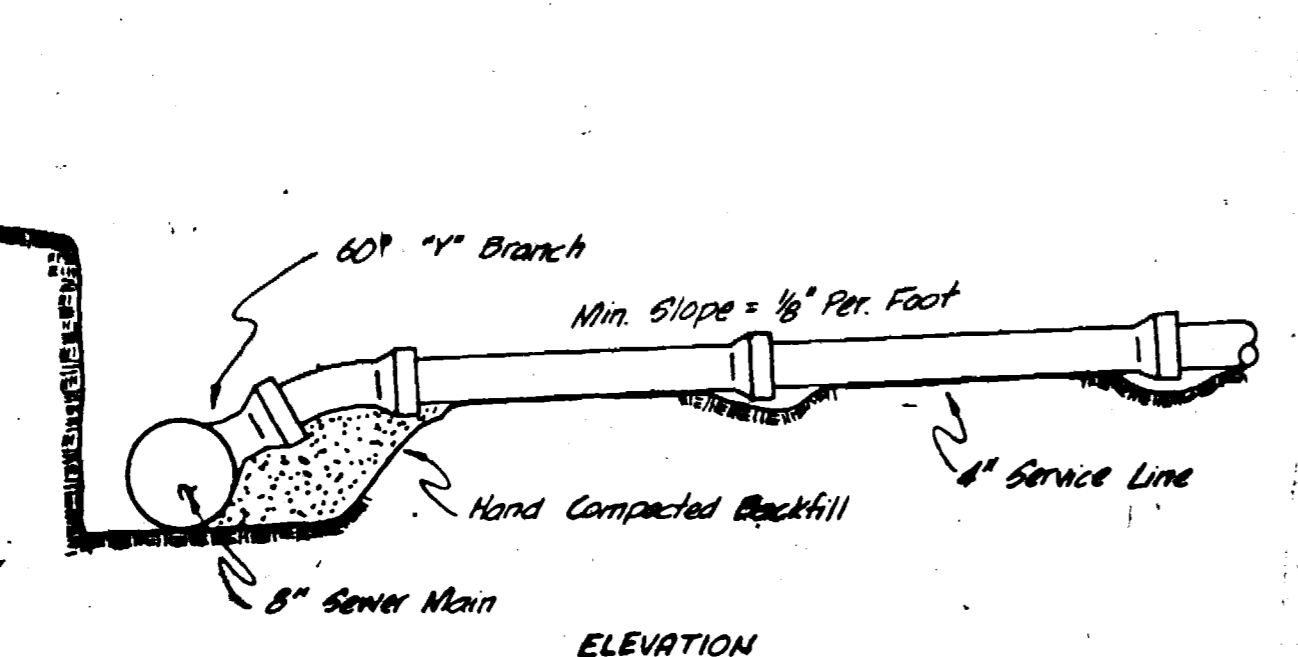
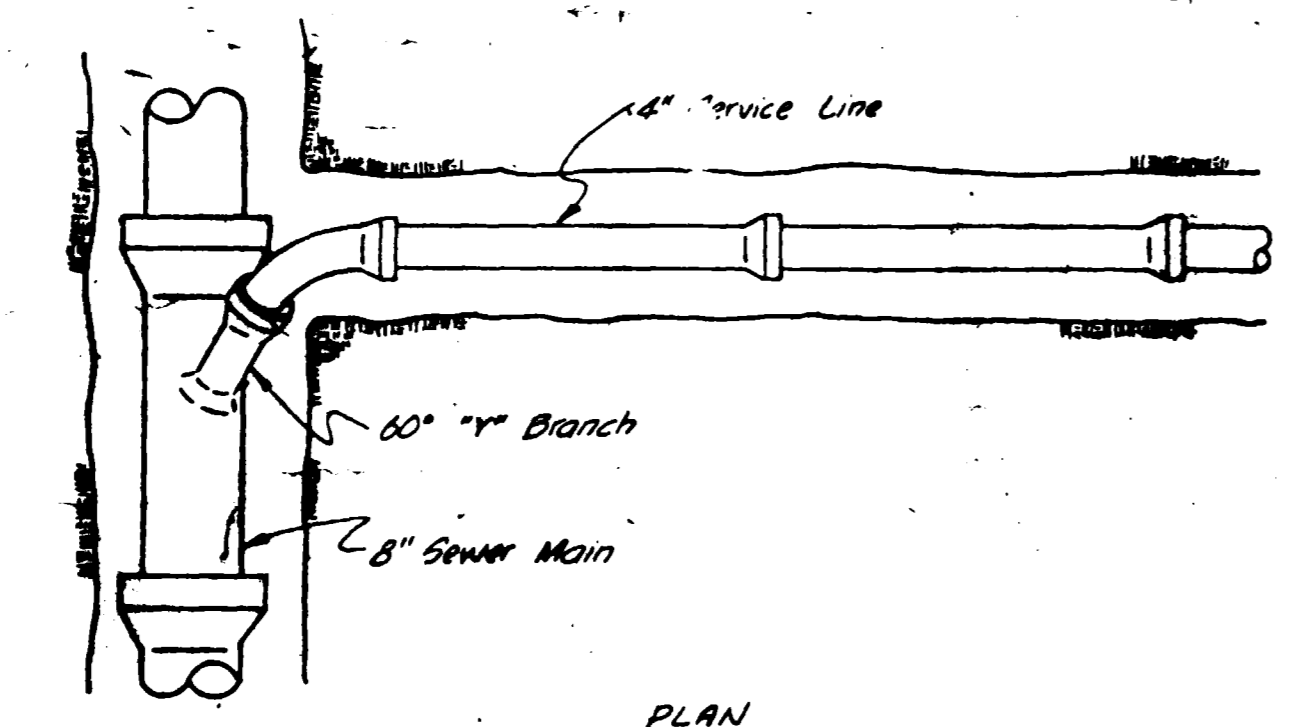


SCALE 1"=50'

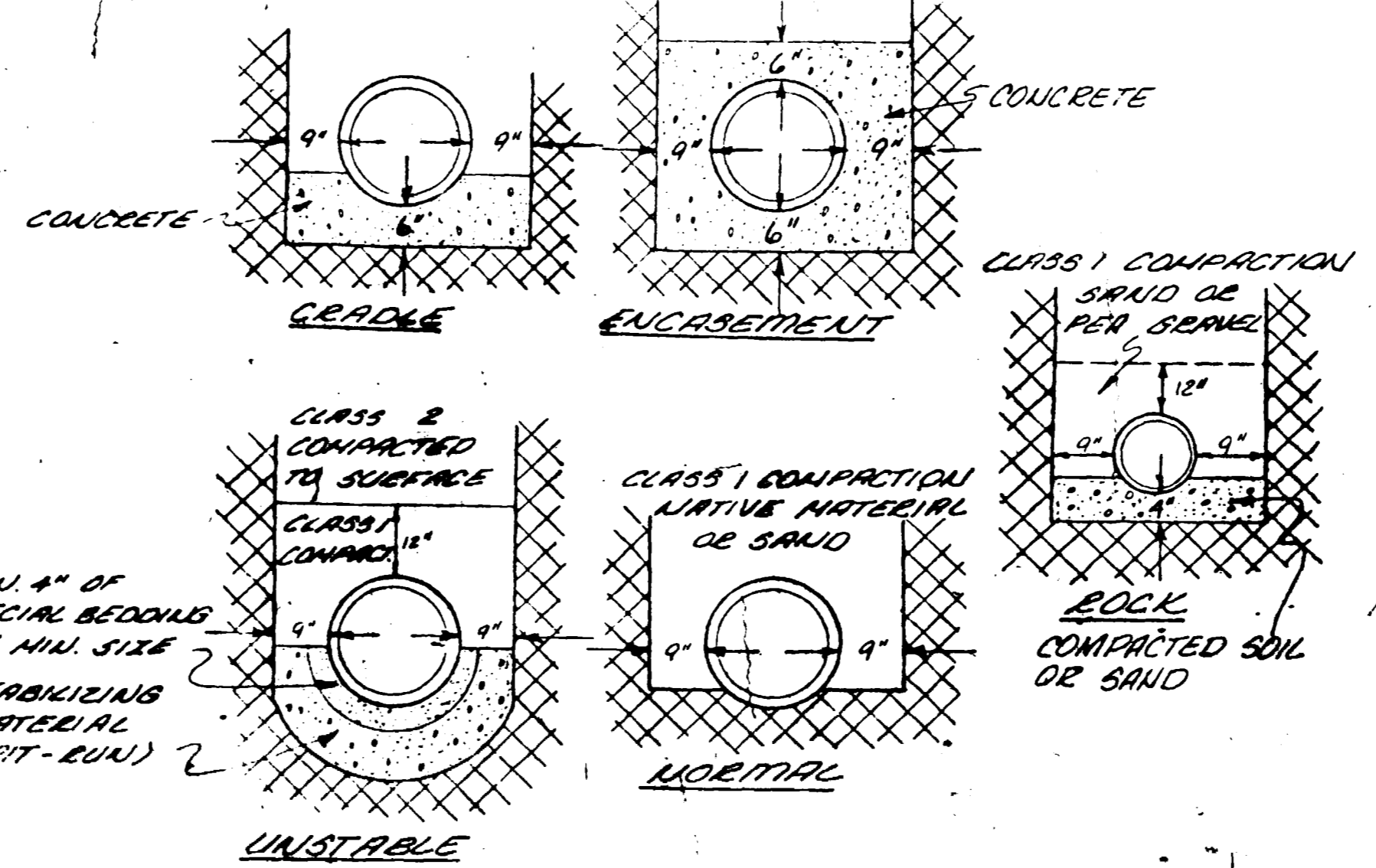
**GENERAL NOTES:**  
 1. TOP OF ECCENTRIC CONE TO BE SET AT TOP OF SUBGRADE (STREET CONTRACTOR TO SET RIMS TO FINISHED GRADE OF STREET.)  
 2. ALL CONSTRUCTION TO BE DONE IN ACCORDANCE WITH THE CENTRAL GRAND VALLEY SANITATION DISTRICT SPECIFICATIONS.

**QUANTITIES**  
 3539.52 LF 8" SANITARY SEWER  
 18 STANDARD MANHOLES  
 62' 4" SERVICE LINES

JOIN TO EXISTING MH J-2 OR BOW SUB. FILING 4  
 STA 4+36  
 INV. EL. = 4693.64

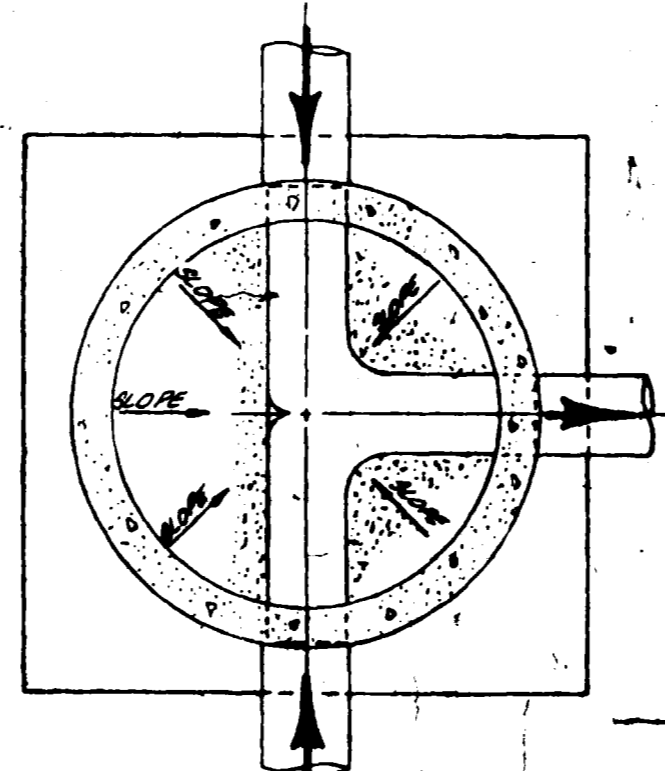


STANDARD SERVICE CONNECTION  
 No Scale

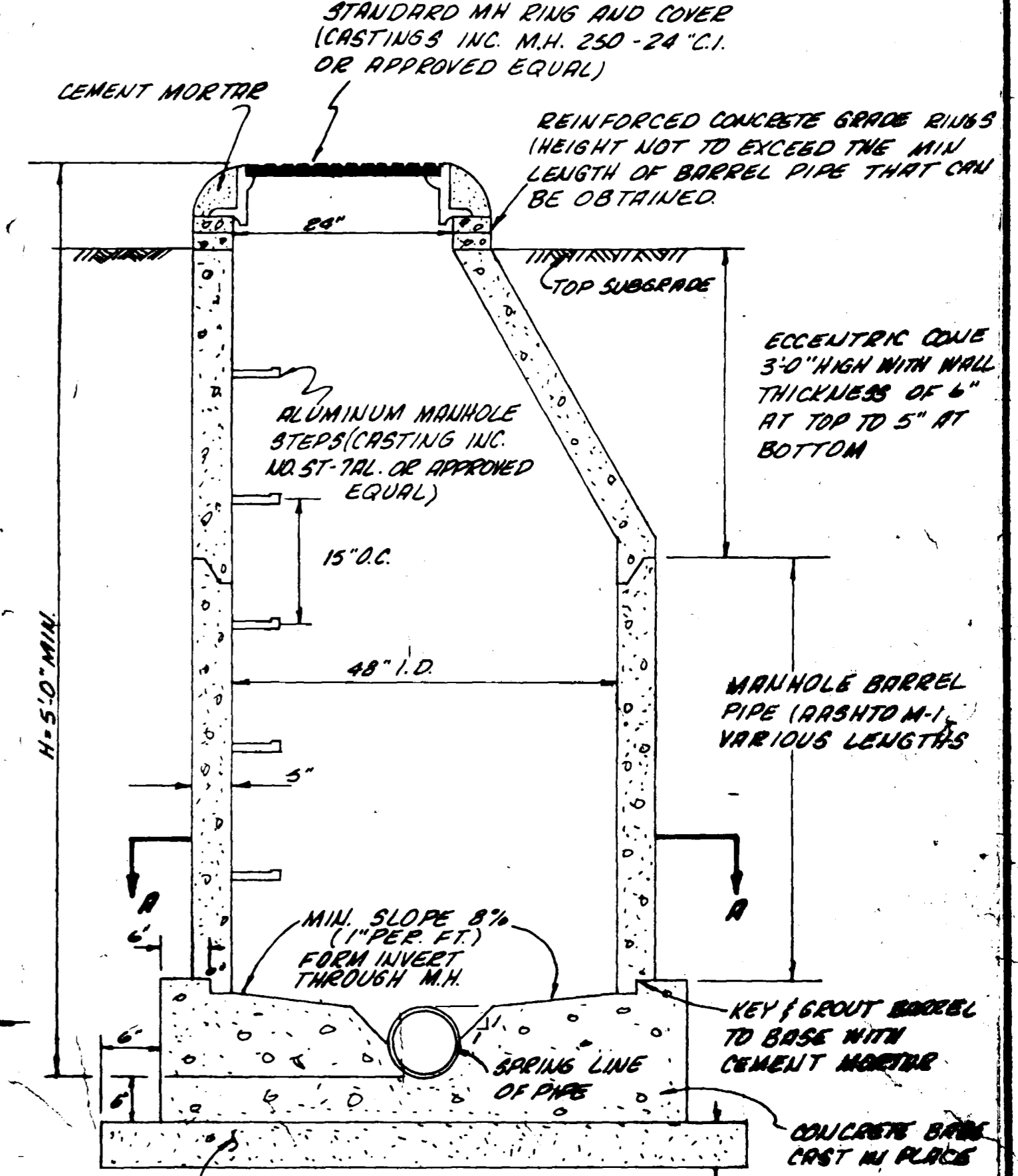


TYPICAL BEDDING DETAIL  
 U.T.S.

HAND DIG FOR BELL OR COUPLERS



SECTION A-A  
 4" JUNCTION



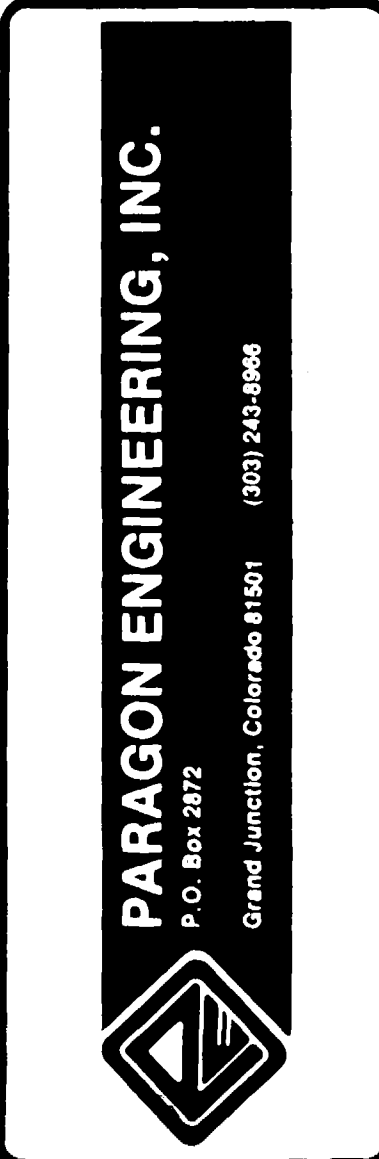
STANDARD MANHOLE

AS BUILT DRAWINGS

AGGREGATE BED COURSE (ASHTO M 43 STA SIZE NO. 5, 36 OR 57)

APPROVED

REVISIONS	BY
4/14/79	MWK



*Wayne H. Lutz*

ASPENWOOD MEADOWS SUBDIVISION  
 MESA COUNTY, COLORADO  
 SANITARY SEWER

