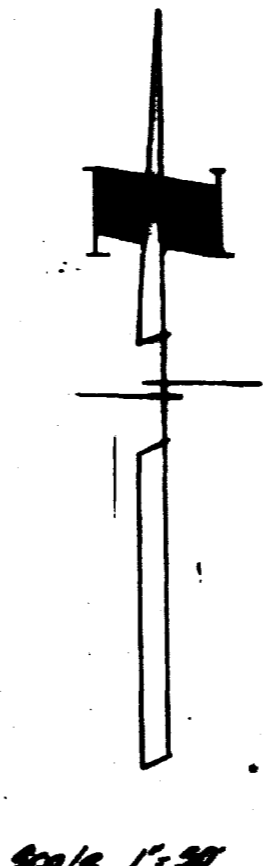
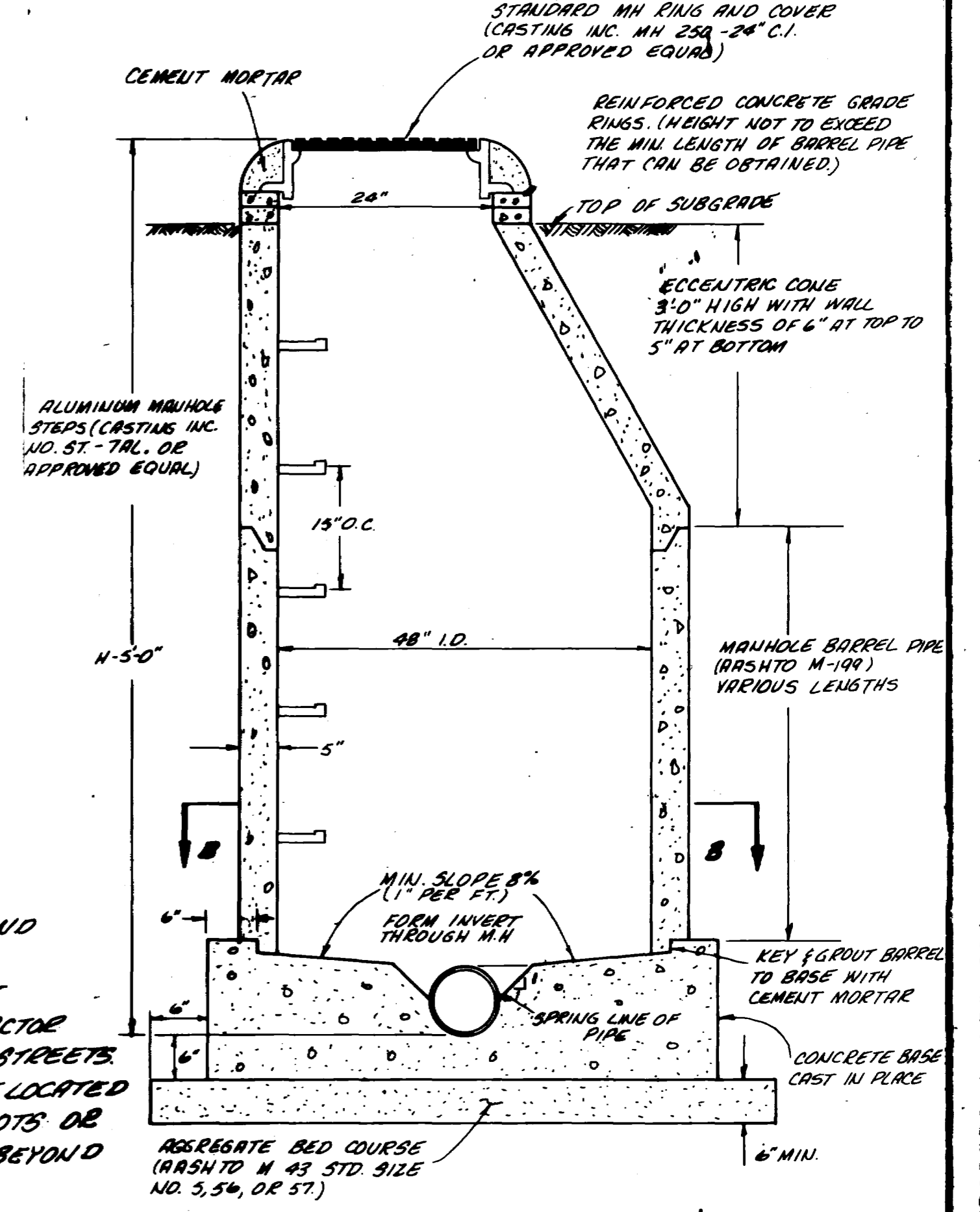


- NOTES:**
1. ALL CONSTRUCTION TO BE DONE IN ACCORDANCE WITH THE "CITY OF GRAND JUNCTION SPECIFICATIONS."
 2. TOP OF ECCENTRIC CONE TO BE SET @ TOP OF SUBGRADE (STREET CONTRACTOR TO SET RINGS TO FINISH GRADE OF STREETS).
 3. SERVICE LINES ARE INTENDED TO BE LOCATED 5' DOWNSTREAM FROM CENTER OF LOTS OR AS SHOWN ON PLANS AND EXTEND 10' BEYOND PROPERTY LINE.

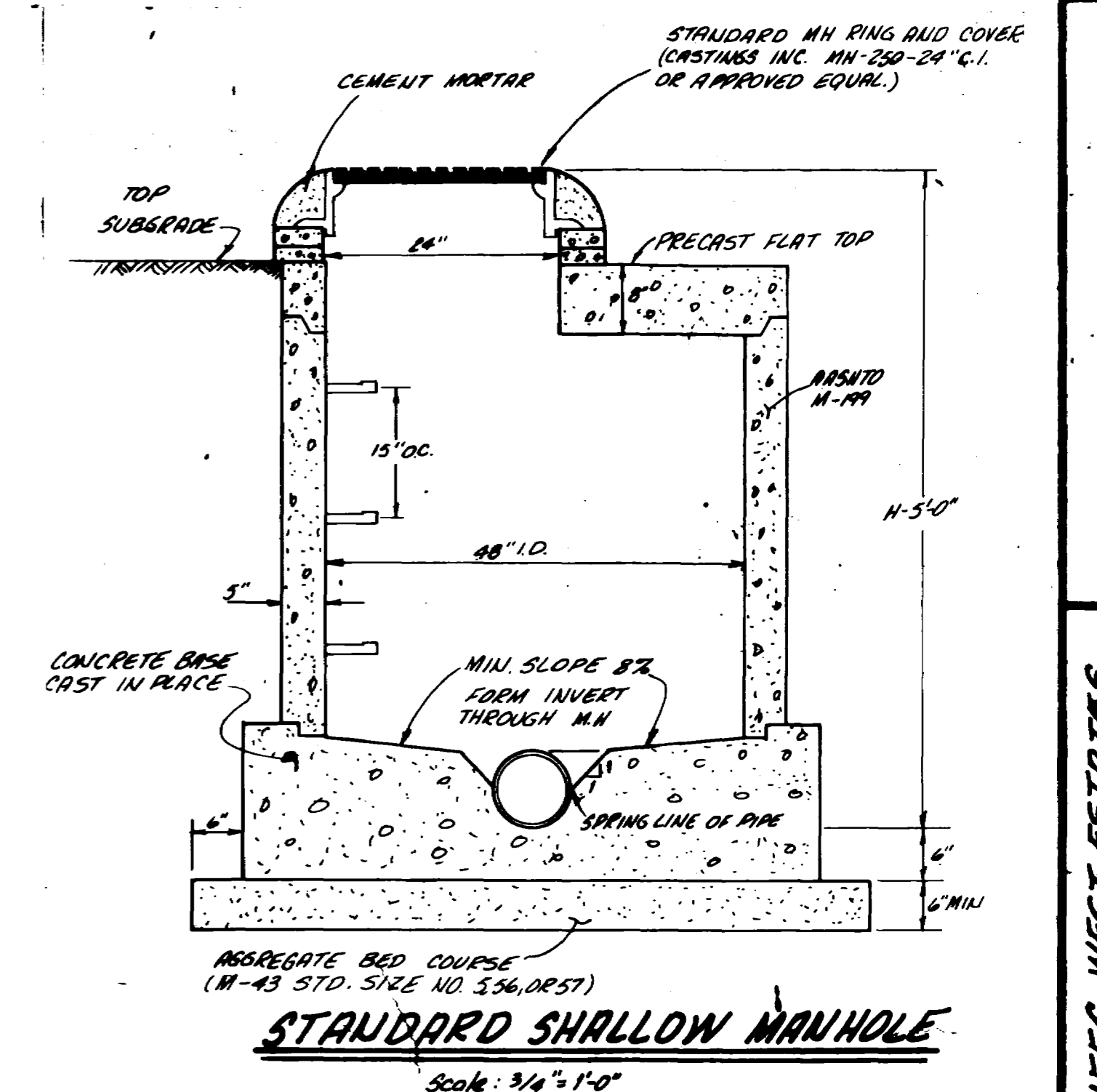
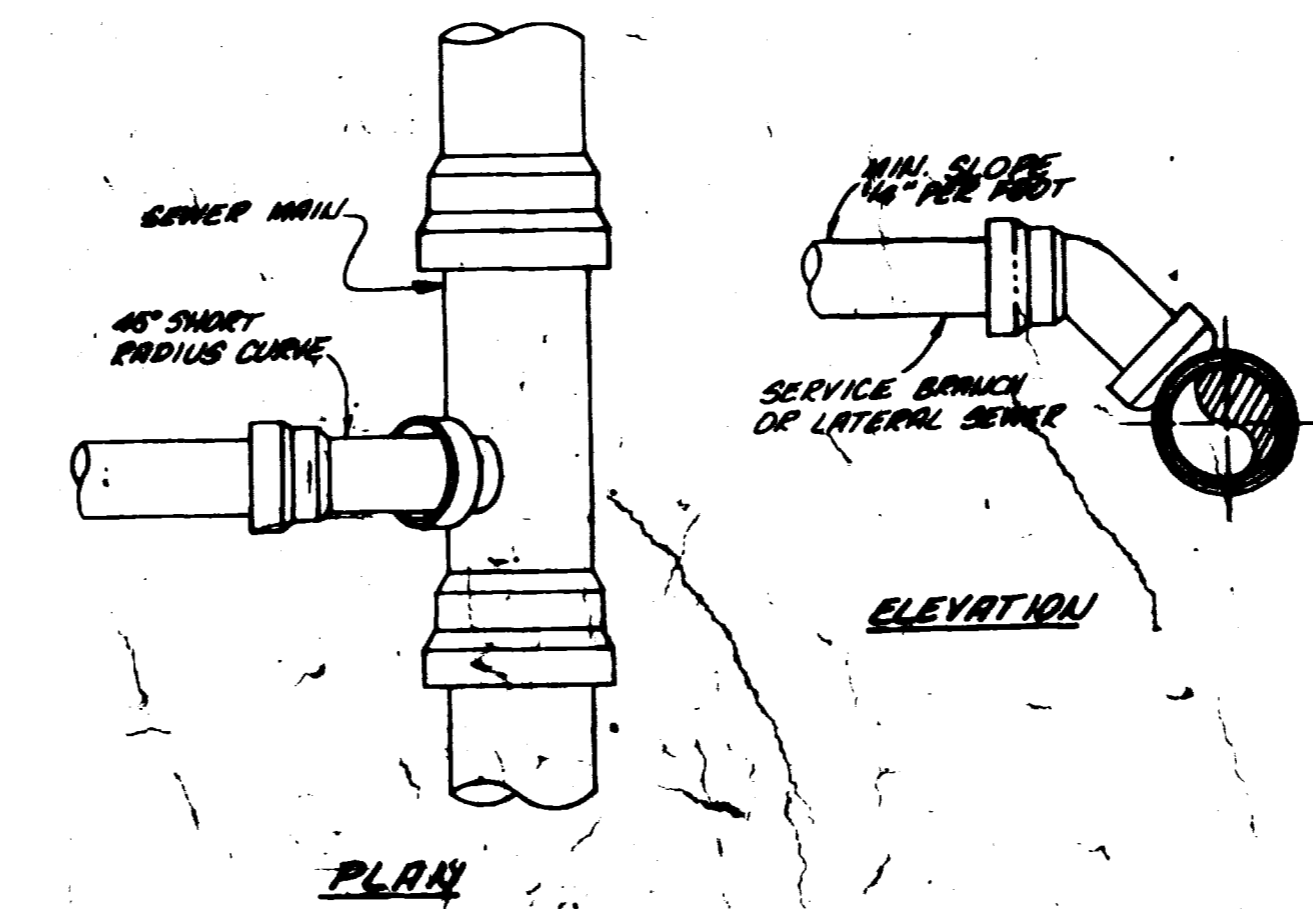


QUANTITIES

MANHOLES = 15

8" SANITARY SEWER 2801 LF

4" SERVICE LINES = 47

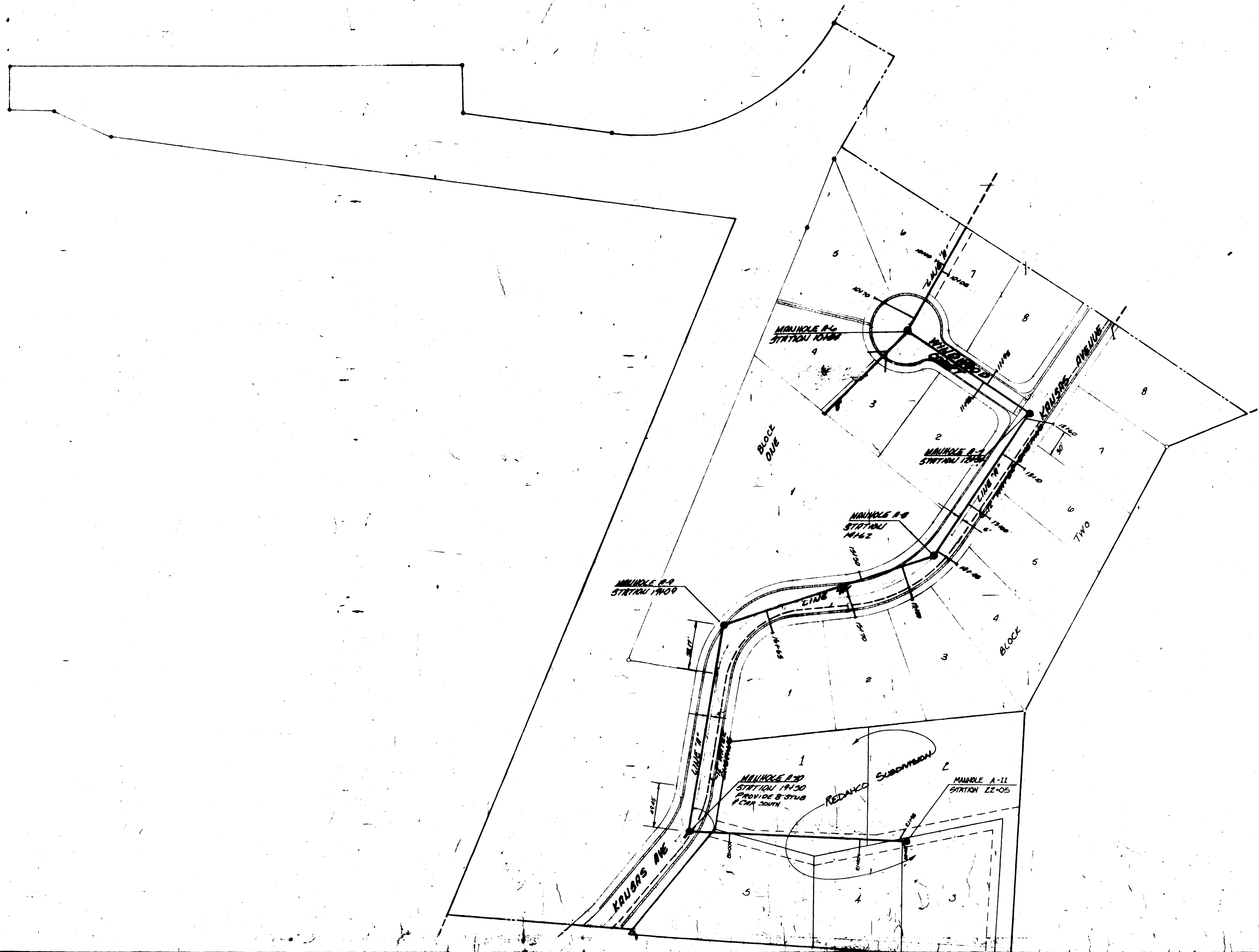


AS BUILT DRAWINGS

12-27-77

SCHEDULE 1

THE BLUFFS WEST ESTATES
 FILING NO. ONE
 MESA COUNTY, COLORADO
 SANITARY SEWER PLAN
 AND DETAILS
 SHEET 1
 3



REVISED: A-7-82 - (REDAKCO SUB.)
 8" SANITARY SEWER FROM M.H. A-10
 STA 19+50, TO M.H. A-11 STA 22+05
 ADDED.

AS BUILT DRAWINGS
 12-27-77
SCHEDULE 1

ROBERT P. GERLO
 Engineering Consultants

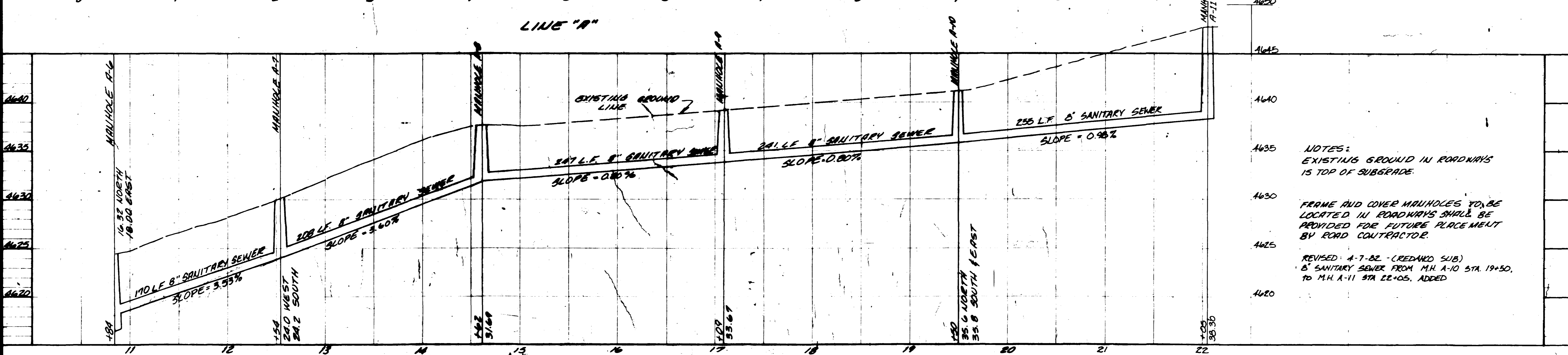
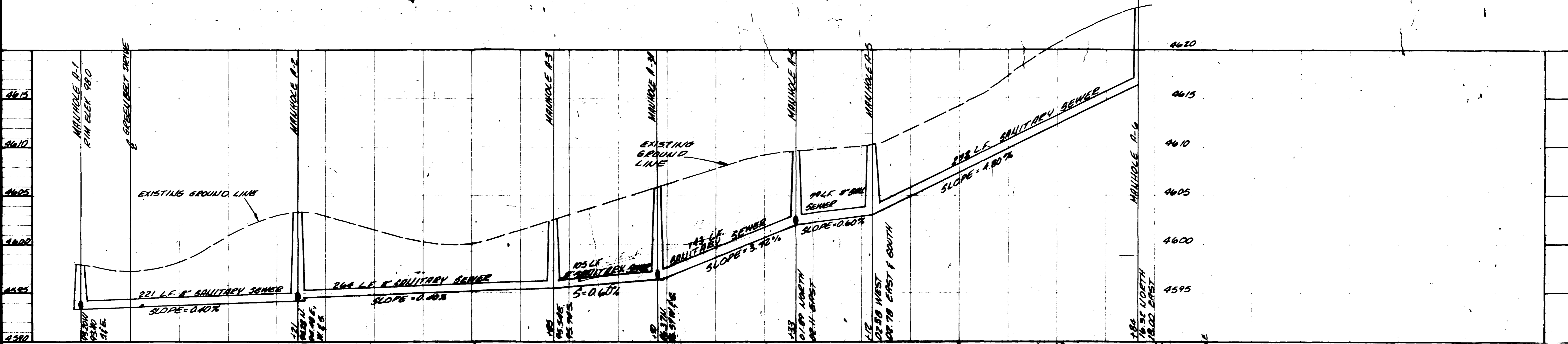
REVISIONS: A-7-82
 DATE REVISED: 12-27-77
 SCALE: 1"=50'

**SANITARY SEWER PLAN
 AND DETAILS**

**THE BLUFFS WEST ESTATE
 PLUMBING AND GAS
 MESA COUNTY, COLORADO**

SHEET
 OF 3

P.O. BOX 4572 GRAND JUNCTION, CO. 81502
 PHONE 243-8868



NOTES:
EXISTING GROUND IN ROADWAYS IS TOP OF SUBGRADE.
FRAME AND COVER MANHOLES TO BE LOCATED IN ROADWAYS SHALL BE PROVIDED FOR FUTURE PLACE MENT BY ROAD CONTRACTOR.
REVISED: 4-7-82 - (REDAND SUB)
8" SANITARY SEWER FROM M.H. A-10 STA. 19+50, TO M.H. A-11 STA. 22+05, ADDED.

