

CHECKED
DATE
Jan 1980
SCALE
As Shown

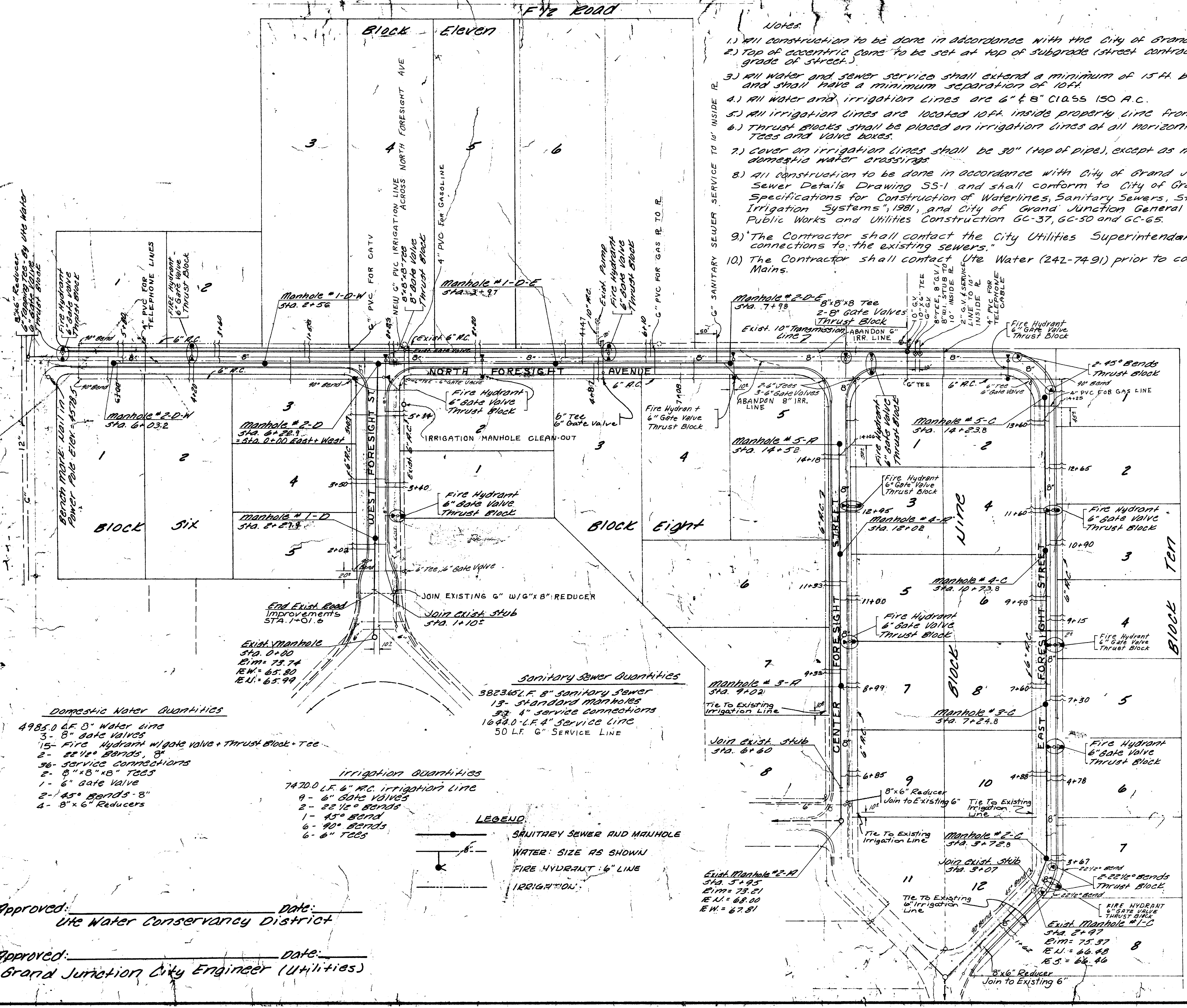
REVISIONS	BY
OCTOBER 17, 1981	RSK
AS BUILT 6/17/82	OUR

PARAGON ENGINEERING, INC.
 P.O. Box 372
 Grand Junction, Colorado 81501 (937) 243-9885



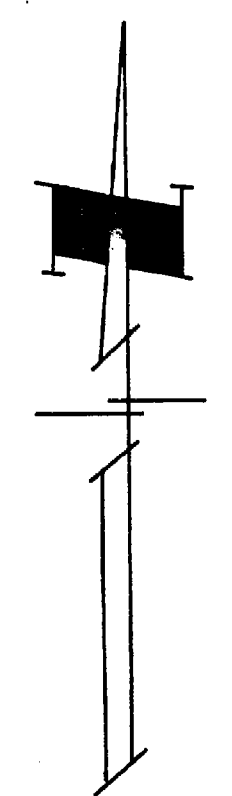
Foresight Park For Industry
 Filing No. Three
 City of Grand Junction, Colorado
 Sanitary Sewer, Domestic Water
 and Irrigation Plan

- Notes:
- 1) All construction to be done in accordance with the City of Grand Junction specifications.
 - 2) Top of concentric cone to be set at top of subgrade (street contractor to set rims to final grade of street.)
 - 3) All water and sewer service shall extend a minimum of 15 ft. beyond property line and shall have a minimum separation of 10 ft.
 - 4) All water and irrigation lines are 6" x 8" CLASS 150 A.C.
 - 5) All irrigation lines are located 10 ft. inside property line from R.W. Line.
 - 6) Thrust blocks shall be placed on irrigation lines at all horizontal and vertical bends, Tees and Valve boxes.
 - 7) Cover on irrigation lines shall be 30" (top of pipe), except as necessary at sewer and/or domestic water crossings.
 - 8) All construction to be done in accordance with City of Grand Junction Standard Sanitary Sewer Details Drawing SS-1 and shall conform to City of Grand Junction "Standard Specifications for Construction of Waterlines, Sanitary Sewers, Storm Drainage and Irrigation Systems", 1981, and City of Grand Junction General Contract Conditions for Public Works and Utilities Construction GC-37, GC-50 and GC-65.
 - 9) The Contractor shall contact the City Utilities Superintendent (244-1568) prior to connections to the existing sewers.
 - 10) The Contractor shall contact Ute Water (242-7491) prior to connection to the existing Mains.



NOTE:
 This is to certify that the system infiltration does not exceed 200 gallons per inch diameter per mile of length per day.

AS BUILT DRAWINGS
 SEWER ONLY

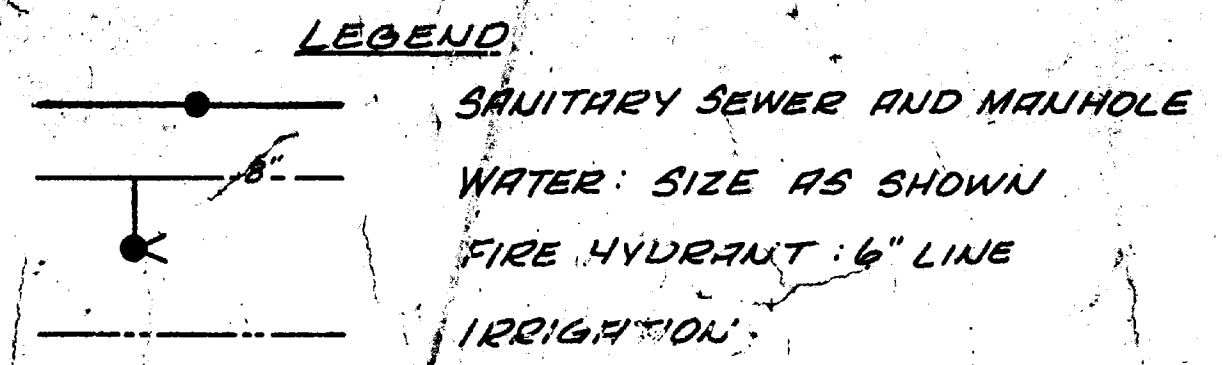


Scale 1" = 100'

- Domestic Water Quantities**
- 4985.0 LF 8" Water line
 - 3- 8" Gate Valves
 - 15- Fire Hydrant w/gate valve + Thrust Block + Tee
 - 2- 22 1/2° Bends, 8"
 - 36- Service Connections
 - 2- 8" x 8" x 8" Tees
 - 1- 6" Gate Valve
 - 2- 45° Bends - 8"
 - 4- 8" x 6" Reducers

- Irrigation Quantities**
- 7470.0 LF 6" R.C. Irrigation Line
 - 9- 6" Gate Valves
 - 2- 22 1/2° Bends
 - 1- 45° Bend
 - 6- 90° Bends
 - 6- 6" Tees

- Sanitary Sewer Quantities**
- 38236.7 LF 8" Sanitary Sewer
 - 13- Standard Manholes
 - 33- 4" Service Connections
 - 1644.0 LF 4" Service Line
 - 50 LF 6" Service Line

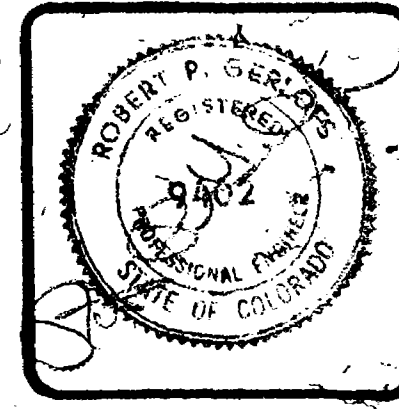


Approved: _____ Date: _____
 Ute Water Conservancy District

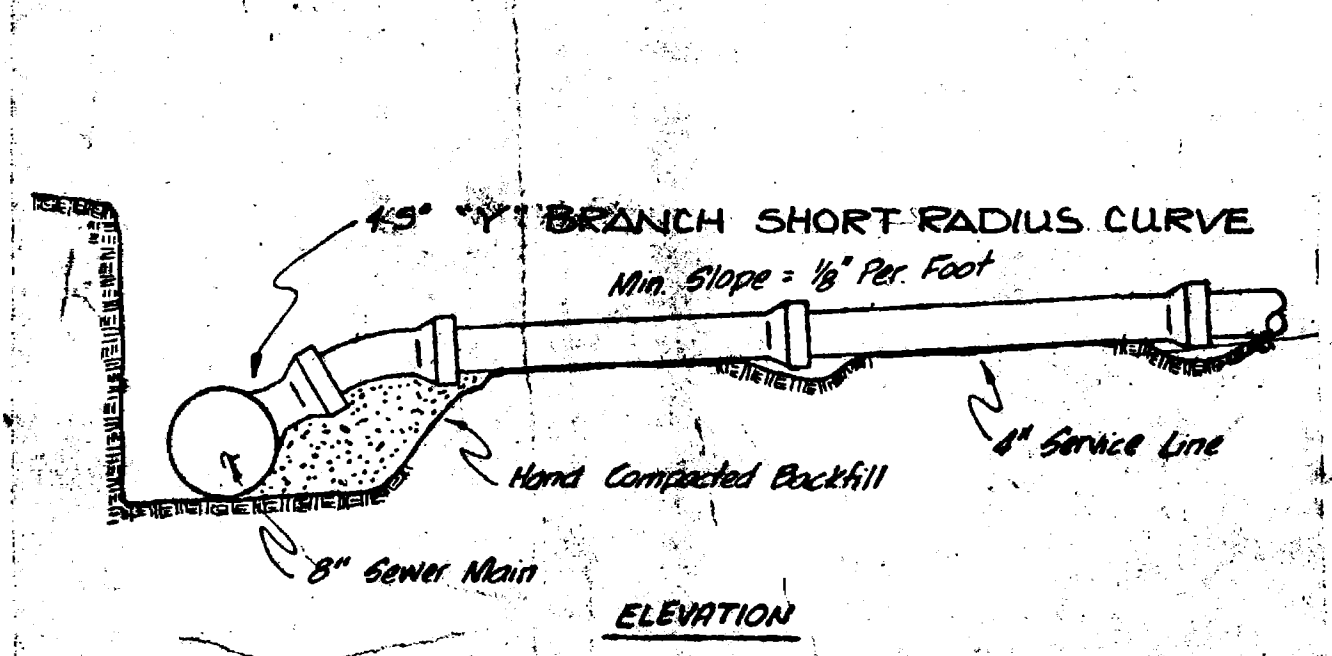
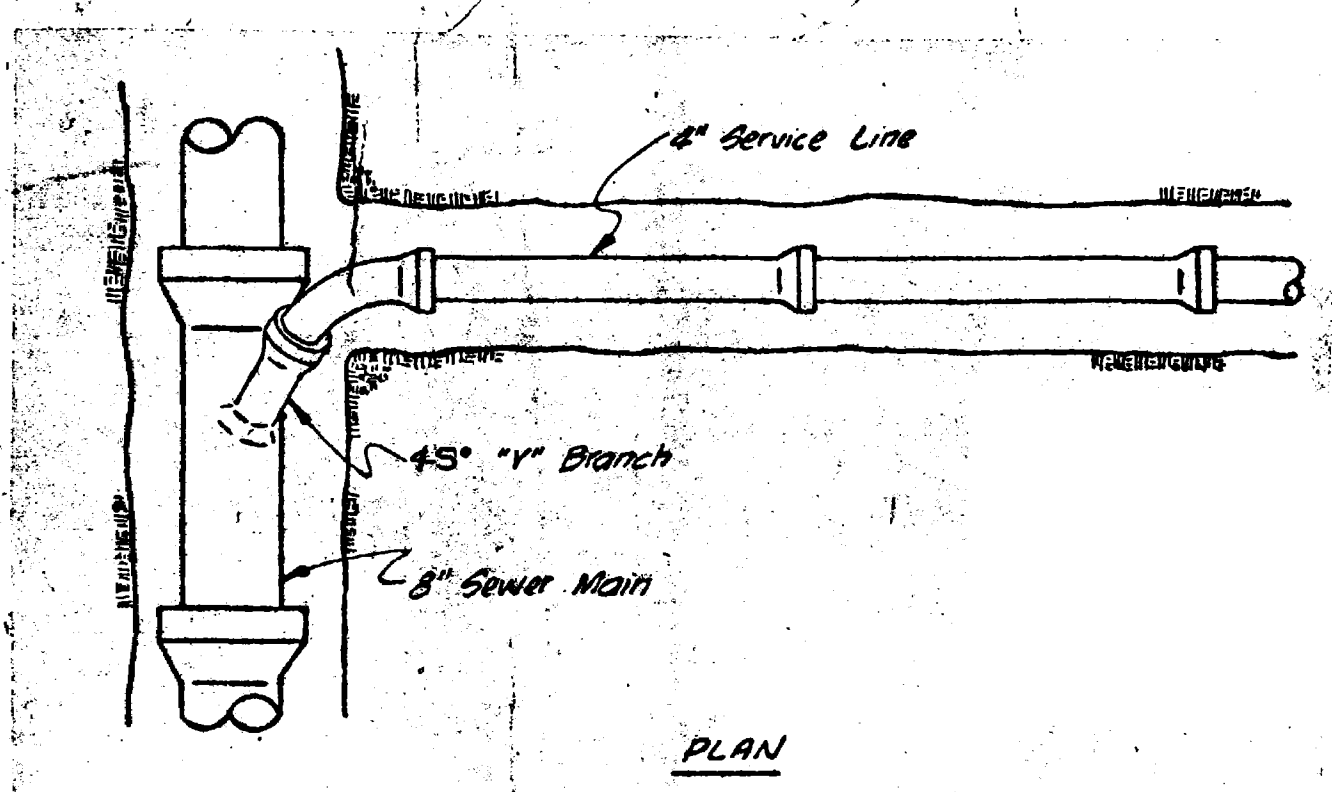
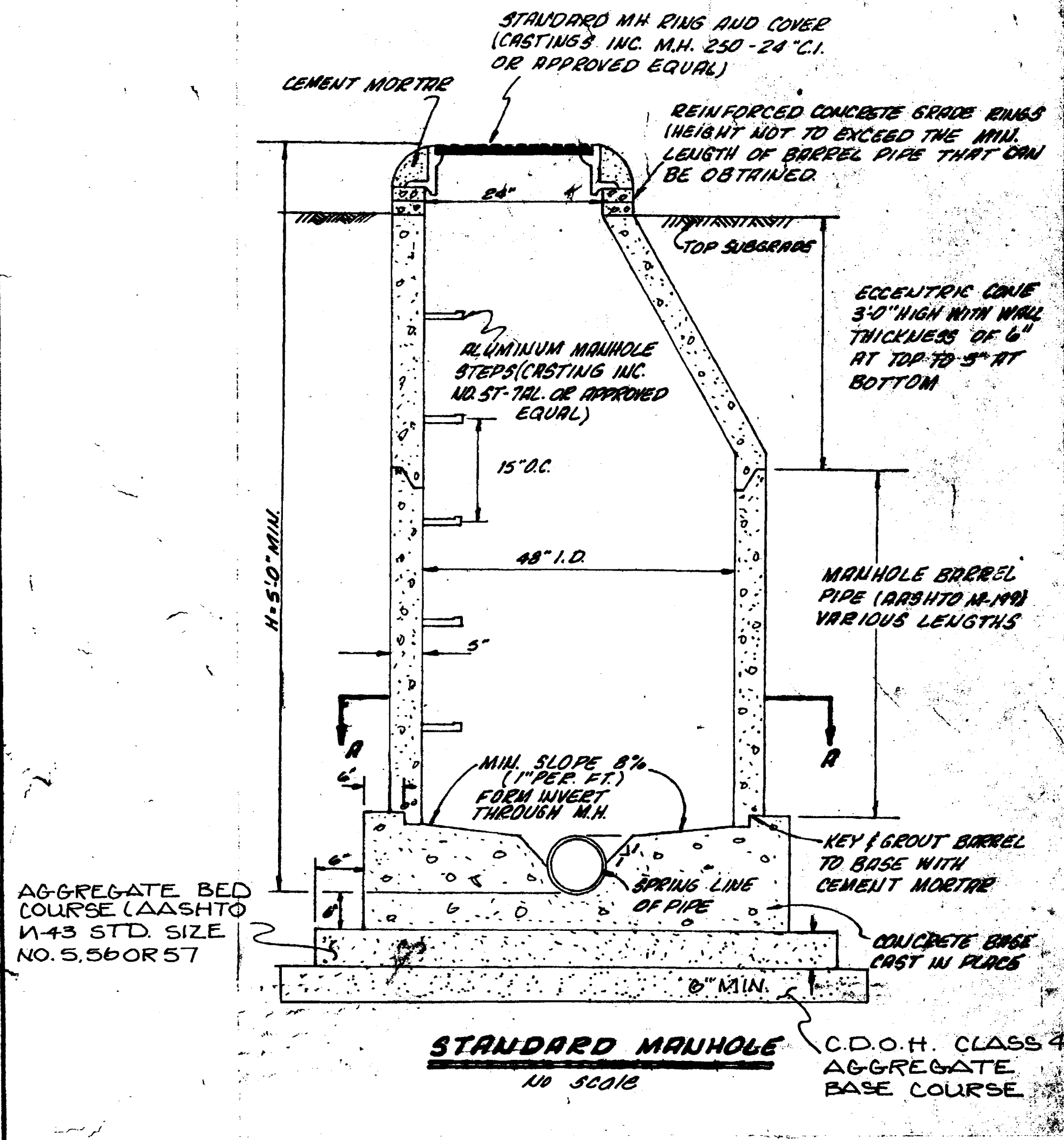
Approved: _____ Date: _____
 Grand Junction City Engineer (Utilities)

REVISIONS	BY
As BUILT 6-16-82	OJR

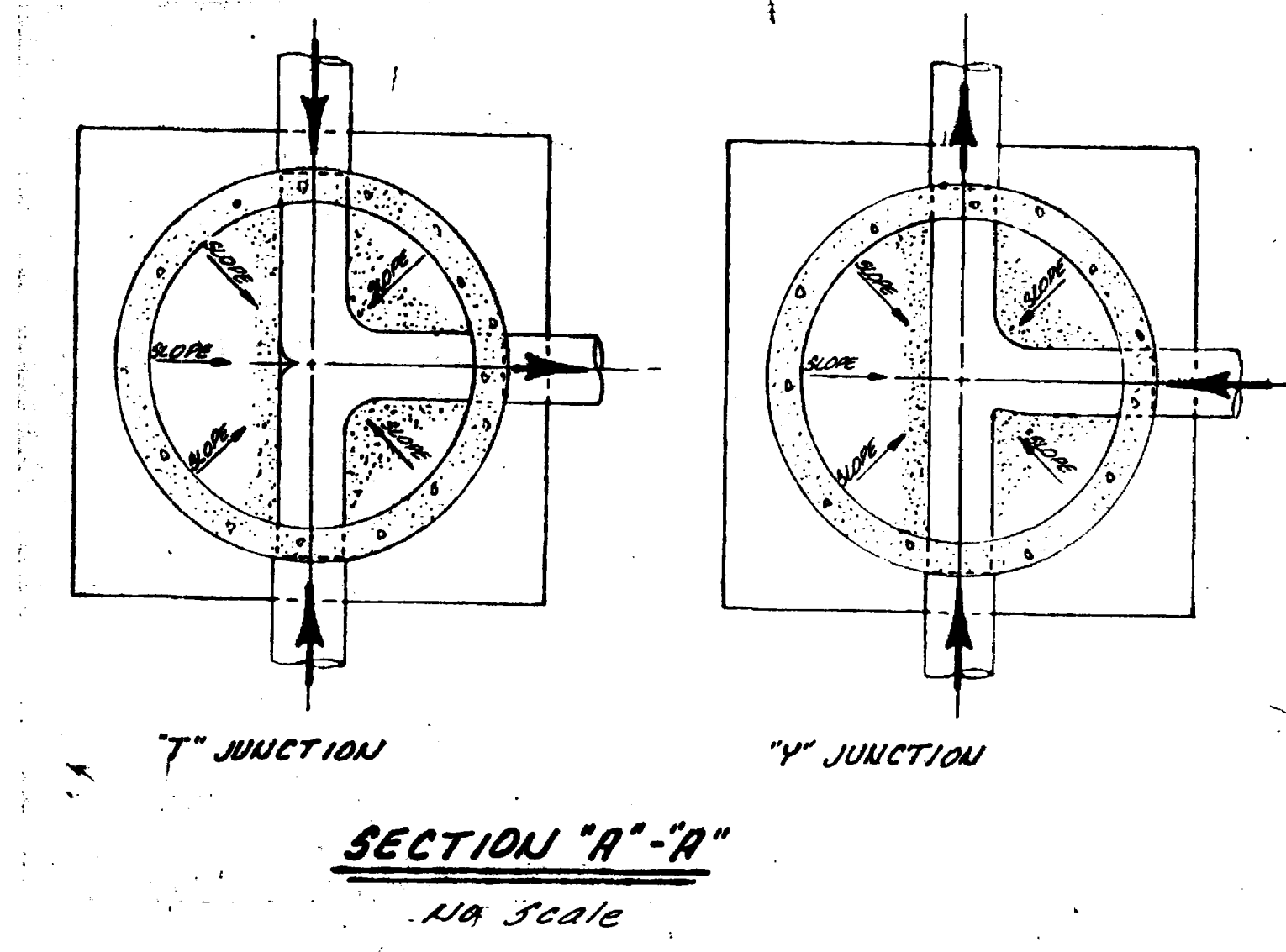
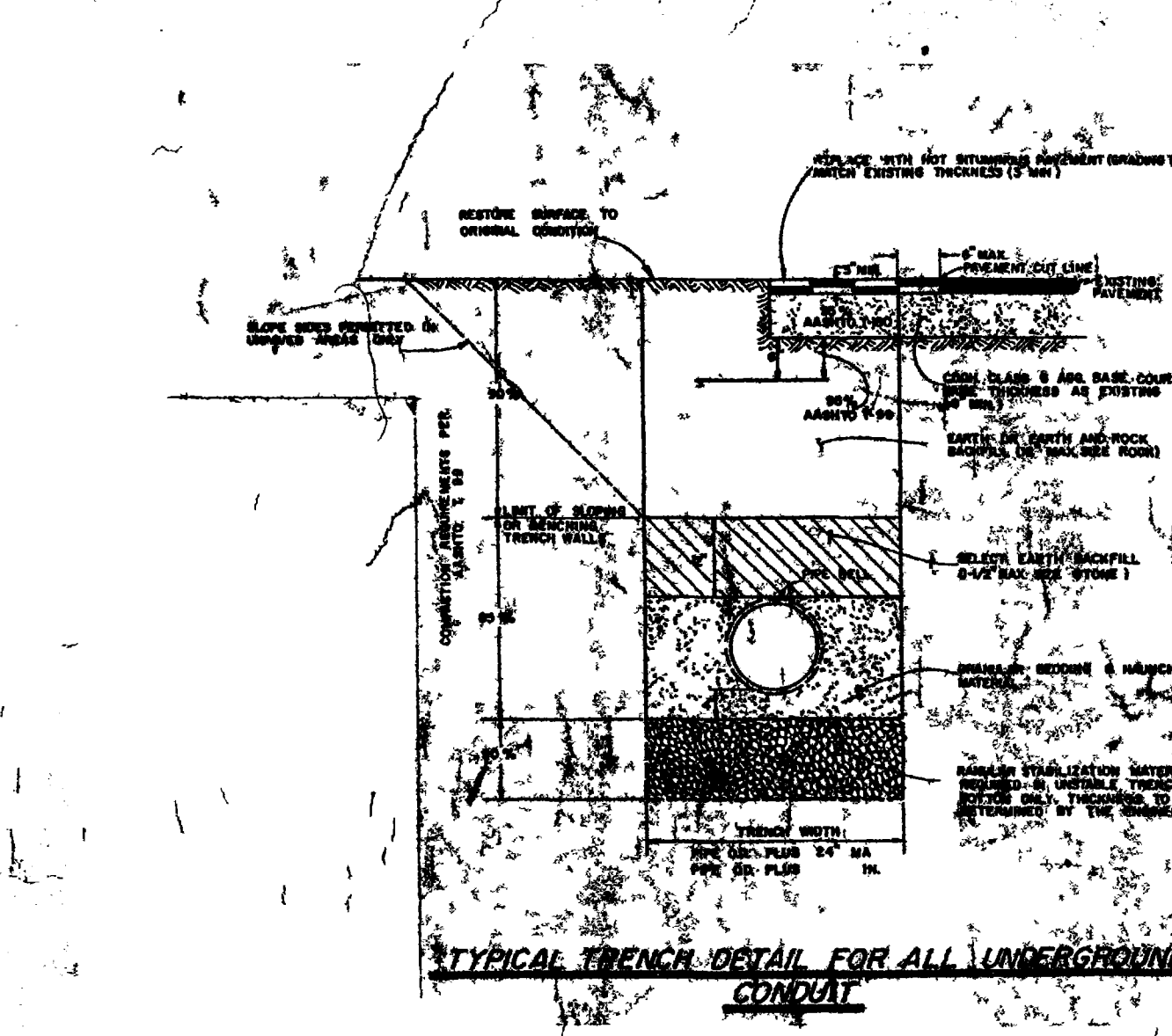
PARAGON ENGINEERING, INC.
P.O. Box 2072
Grand Junction, Colorado 81501 (801) 243-2966



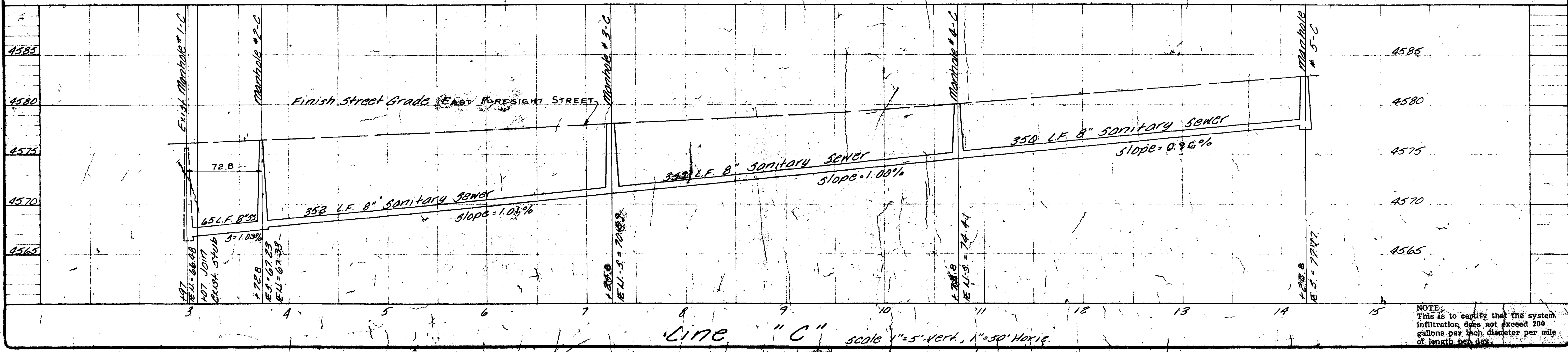
Foresite Park For Industry
 City of Grand Junction, Colorado
 Sanitary Sewer, Domestic Water and
 Irrigation Plant - Sewer Profiles & Details



STANDARD SERVICE CONNECTION
No Scale



AS BUILT DRAWINGS



NOTE:
This is to certify that the system
infiltration does not exceed 200
gallons per inch diameter per mile
of length per day.

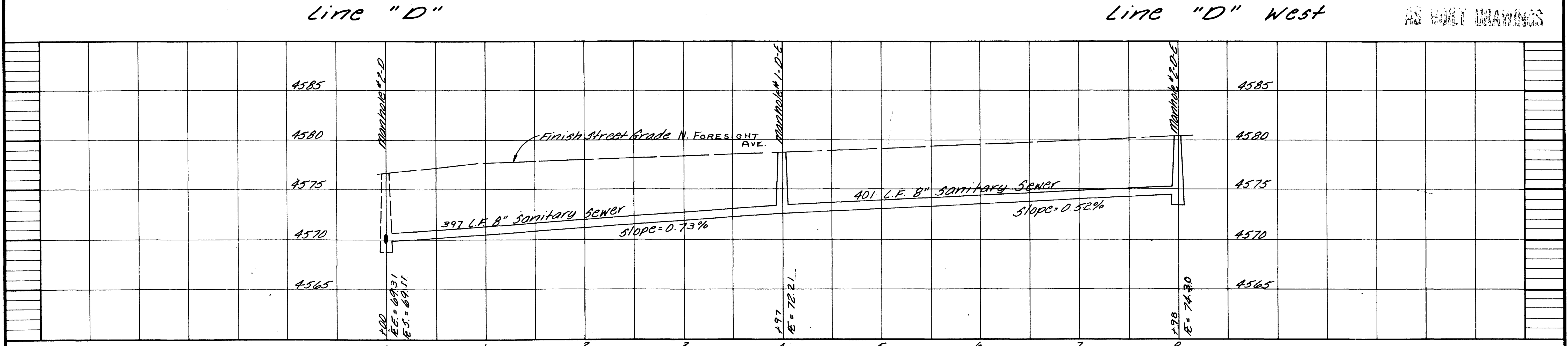
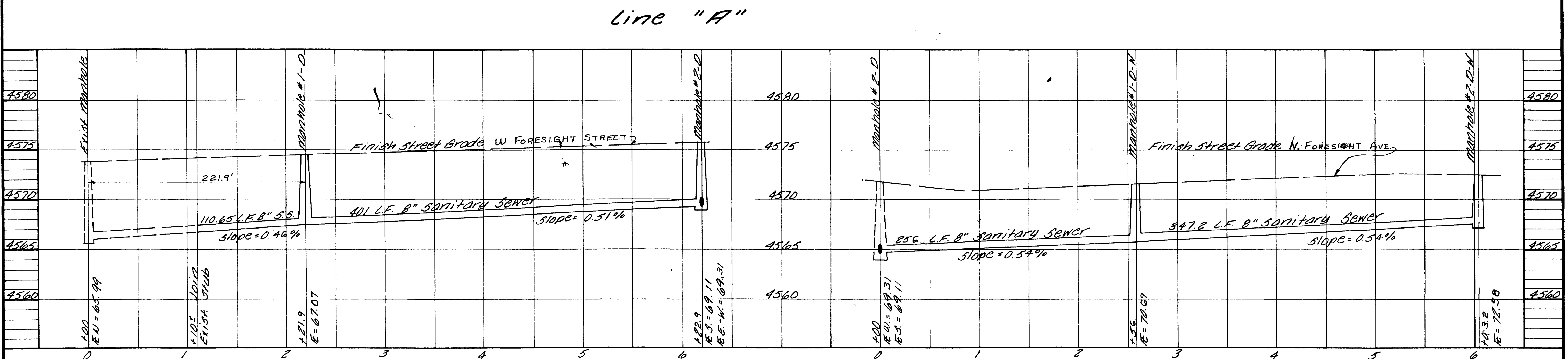
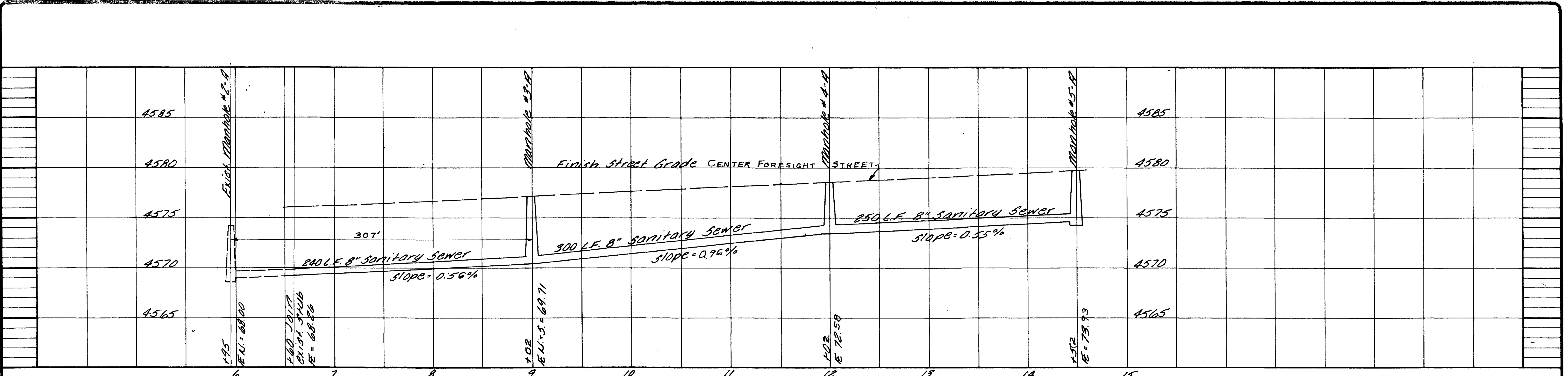
CHECKED
DATE
Jan 1980
SCALE
1" = 5' Vert 1" = 50' Horiz
REVISIONS
BY
As BUILT G/LG-BA OJR

PARAGON ENGINEERING, INC.
 P.O. Box 2812
 Grand Junction, Colorado 81501 (303) 243-8866



FORESITE PARK FOR INDUSTRY
 Filing No. THREE
 CITY OF GRAND JUNCTION, COLORADO
 SANITARY SEWER, DOMESTIC WATER
 AND IRRIGATION PLAN - SEWER PROFILES

SHEET
4
OF 4 SHEETS



NOTE:
 This is to certify that the system infiltration does not exceed 200 gallons per inch diameter per mile of length per day.