

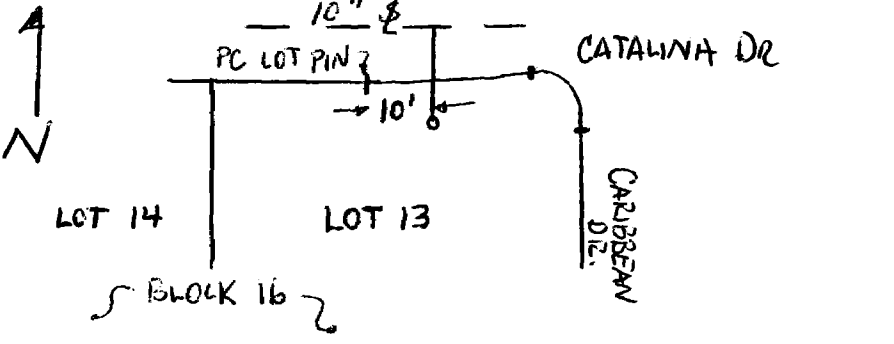
ARIX

October 12, 1979

Mr. John Kenney
 City Utility Inspector
 250 No. 5th
 Grand Junction, Colorado 81501

Dear John:

The following is the corrected distance for the as-built on the sewer tap, Lot 13, Block 16, Paradise Hills-Filing 5.



I hope this helps keep your as-built drawings accurate and up to date.

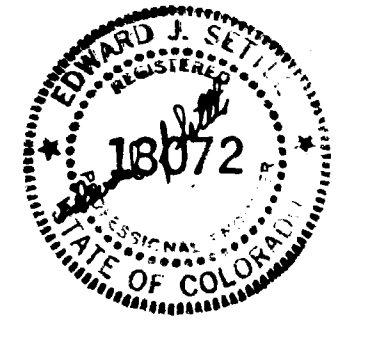
Sincerely,

ARIX, A Professional Corporation

John Elmer

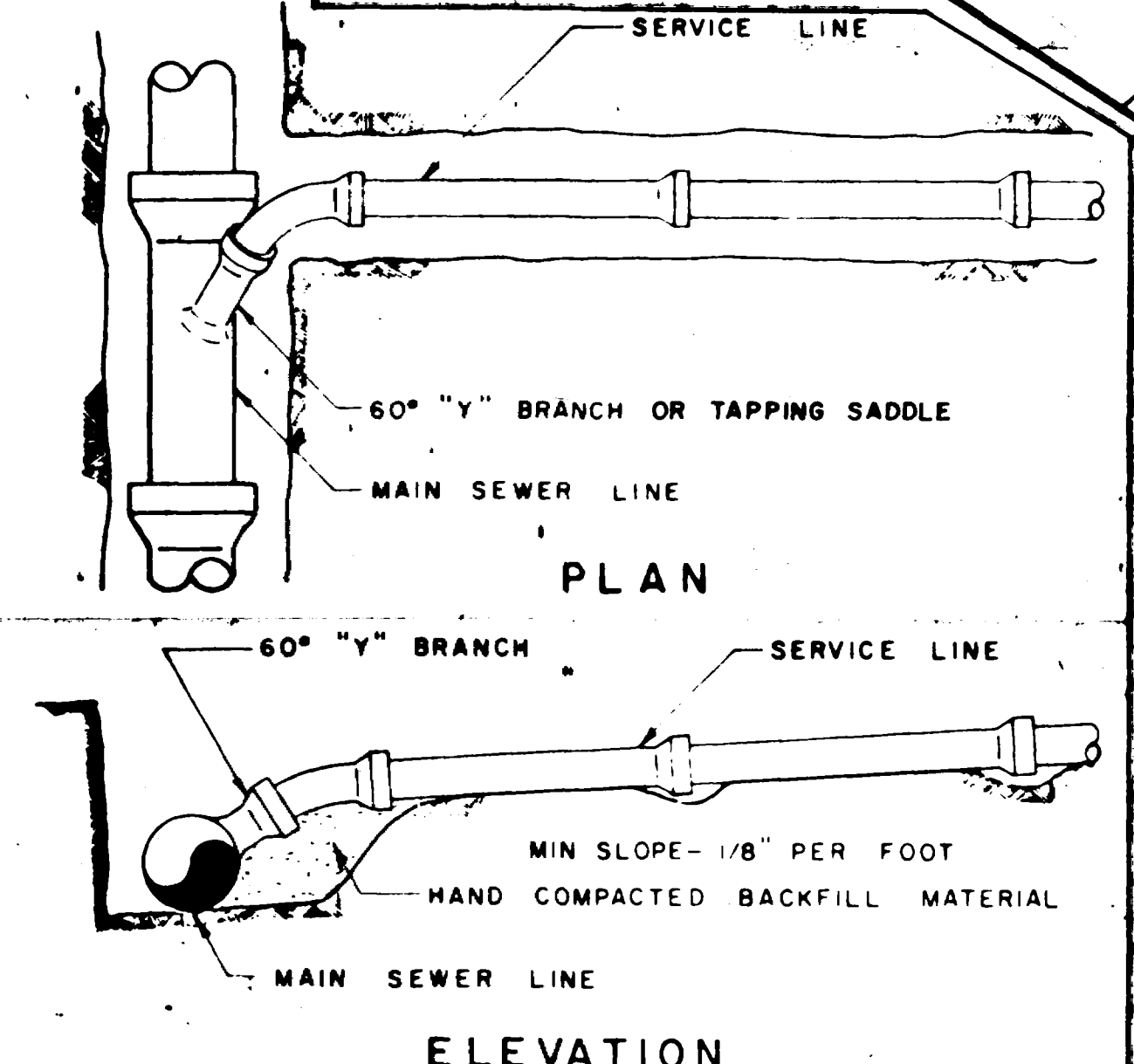
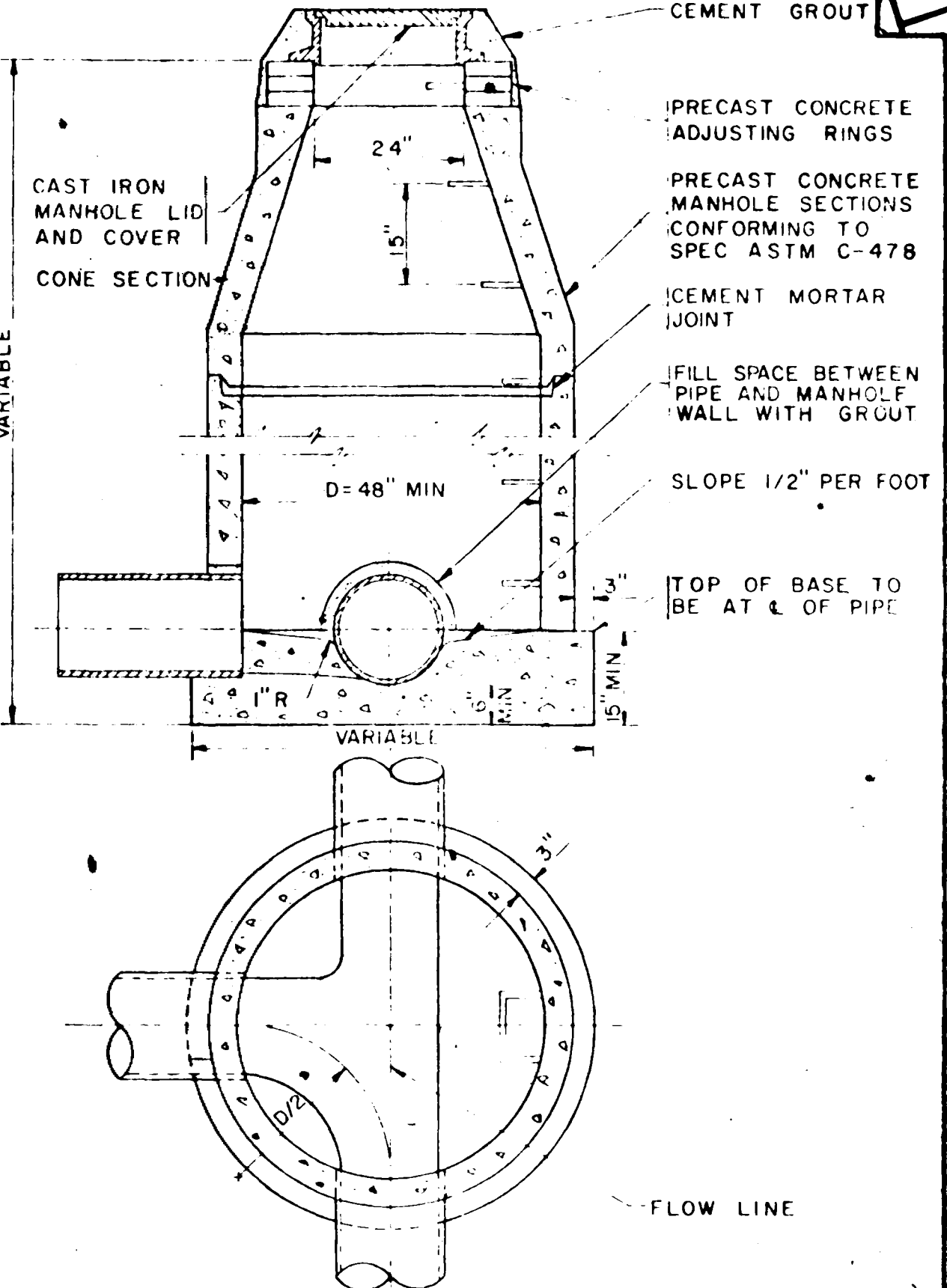
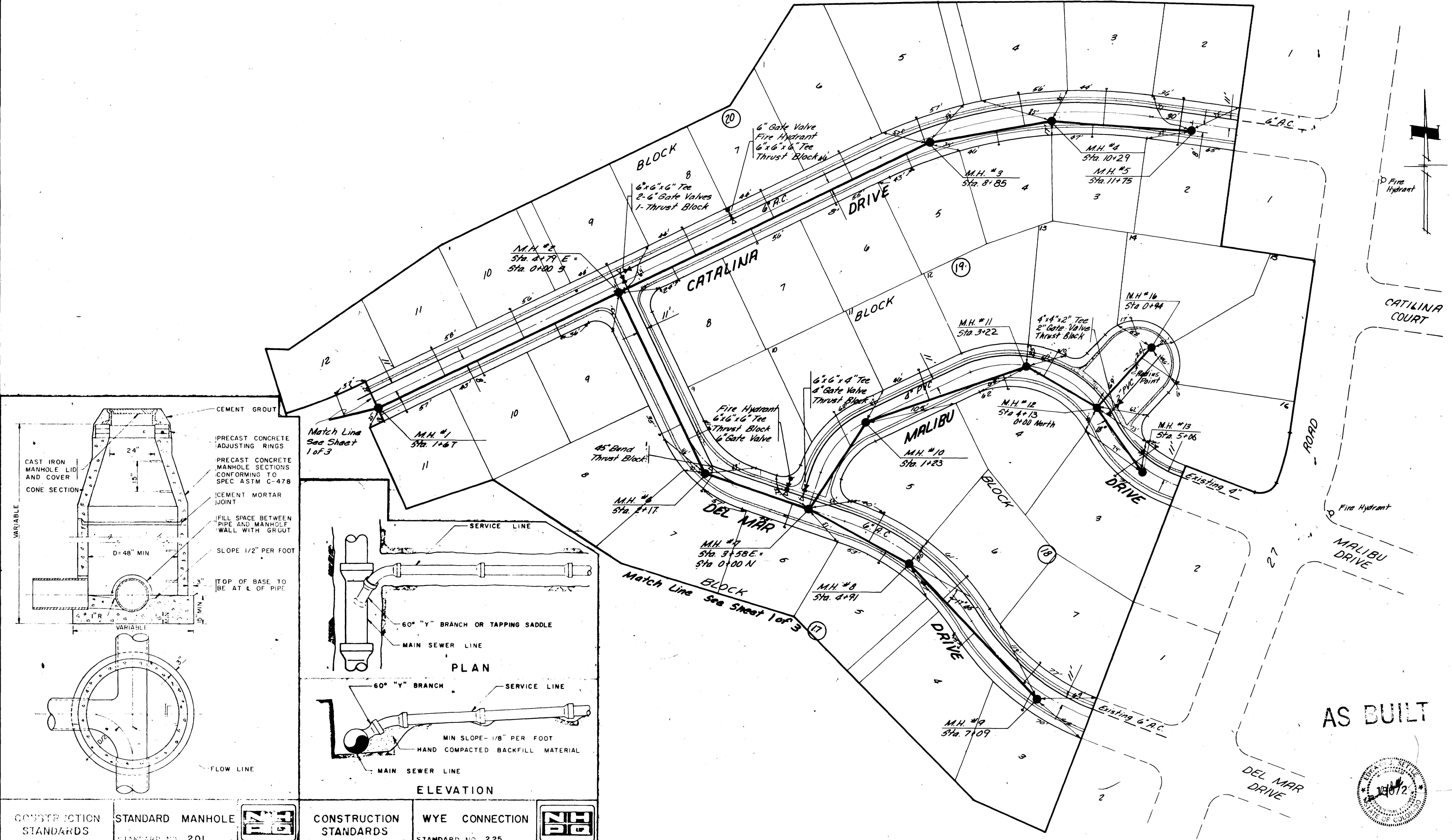
John Elmer, Project Engineer

JE:ks



AS BUILT

DATE February 1977	DRAFTSMAN P.J.S.	DEPT. IN CHARGE A.C.		NELSON - HALEY - PATTERSON AND QUIRK ENGINEERING CONSULTANTS	PARADISE HILLS FILING 5 MESA COUNTY, COLORADO	SANITARY SEWER PLAN & DOMESTIC WATER	6 SHEETS
SCALE 1"=30'	PROJECT ENGR. E.U.S.	CONST. REP.					
	PROJECT MGR. E.U.S.						



CONSTRUCTION STANDARDS	STANDARD MANHOLE STANDARD NO. 201	CONSTRUCTION STANDARDS	WYE CONNECTION STANDARD NO. 225
------------------------	-----------------------------------	------------------------	---------------------------------

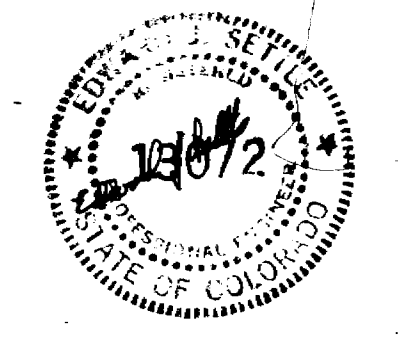
NO.	BY	DATE	APPROVED	REVISIONS

DATE	DRAFTSMAN	DEPT. HEAD
February 1977	P.J.S.	
SCALE	PROJECT ENGR.	CONST. REP.
1"=50'	E.J.S.	
	PROJECT MGR.	
	E.J.S.	

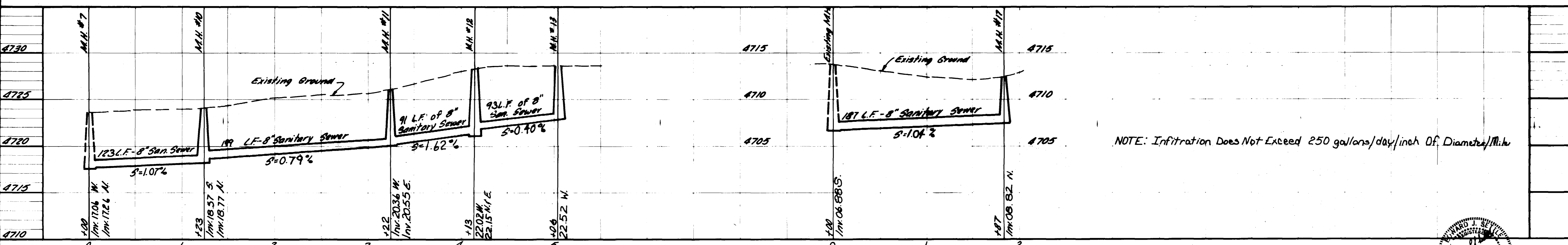
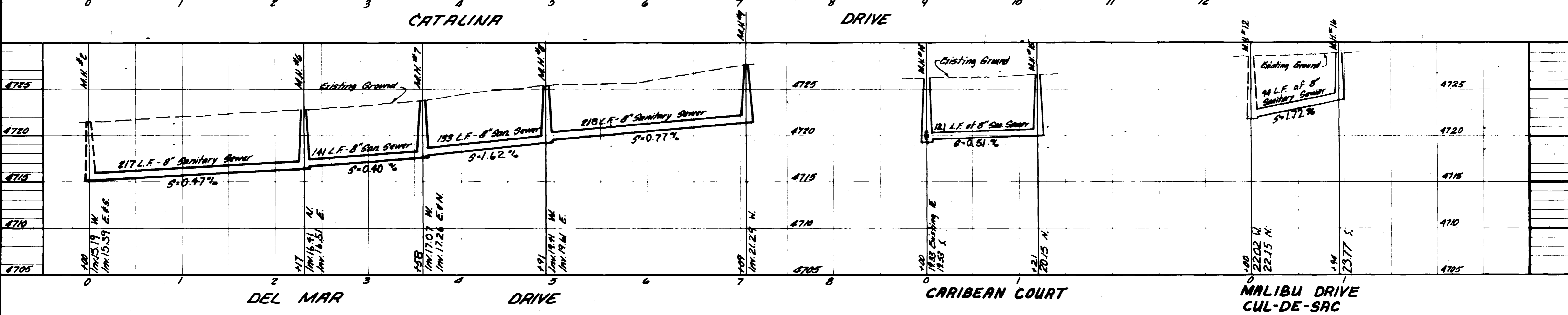
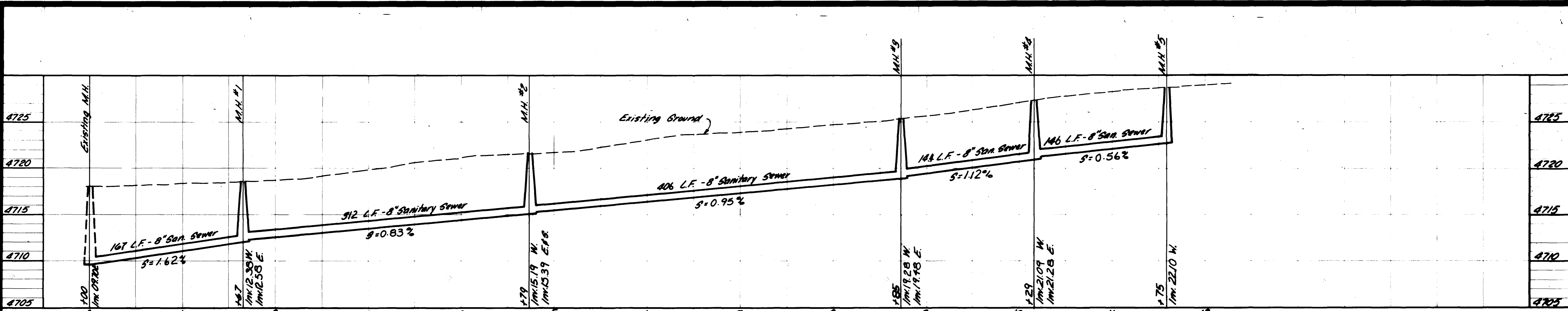

NELSON - HALEY - PATTERSON AND QUIRK
 ENGINEERING CONSULTANTS

PARADISE HILLS FILING 5
MESA COUNTY, COLORADO

SANITARY SEWER PLAN & DOMESTIC WATER
 SHEET 2 OF 6
 PROJECT NO. 75-2-ENG-0430
 02023702.tif



AS BUILT



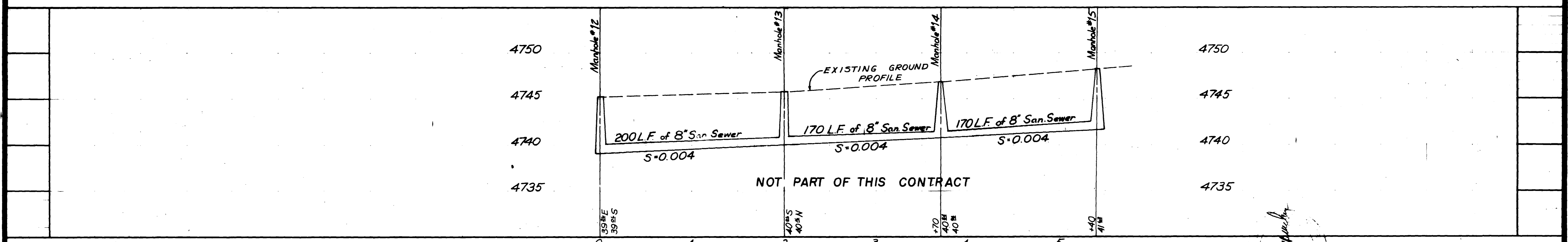
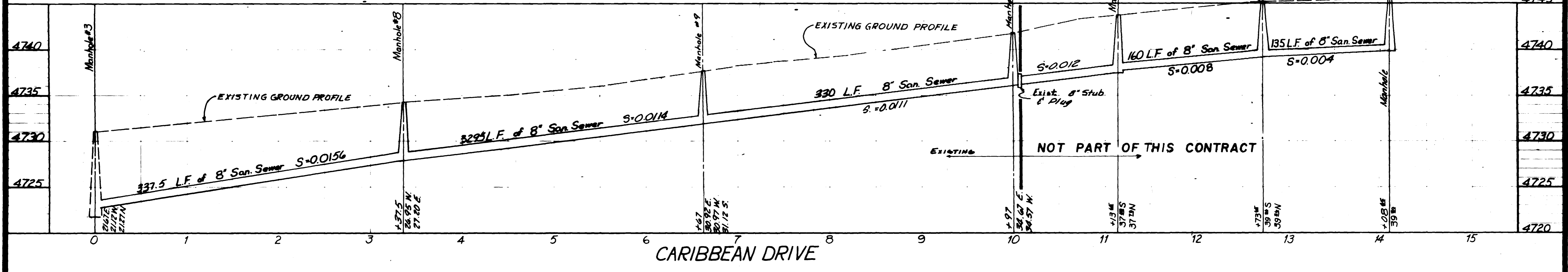
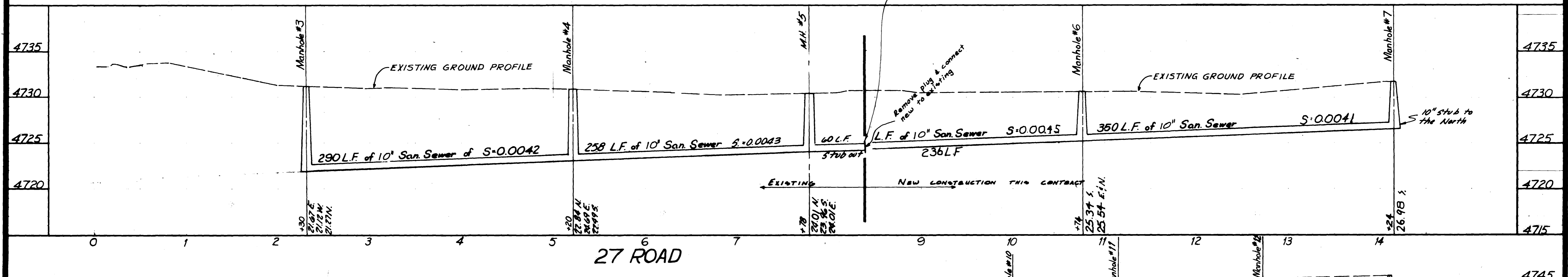
NOTE: Infiltration Does Not Exceed 250 gallons/day/inch Of Diameter/Mile

AS BUILT



NO.	BY	DATE	APPROVED	REVISIONS	DATE February 1977	DRAFTSMAN P.S.	DEPT. HEAD	PROJECT ENGR. E.J.S.	CONST. REP.	PROJECT MGR. E.J.S.		NELSON - HALEY - PATTERSON AND QUIRK ENGINEERING CONSULTANTS	PARADISE HILLS FILING NO 5 MESA COUNTY, COLORADO	SANITARY SEWER PROFILES	SHEET 6 SHEETS 3
-----	----	------	----------	-----------	-----------------------	-------------------	------------	-------------------------	-------------	------------------------	--	--	---	-------------------------	---

Note: 1st 2 Joints added on to 60' Stub were Curved for Proper Alignment. A Copper Wire was Placed along The line With One End Stuck Out in M.H. #6 for future Line Location.



Handwritten signature

AS BUILT

1	R/S	W/gh	EJS	As Built	DATE: August, 1975	DRAFTSMAN: JVC	DEPT. HEAD:	PROJECT ENGR:	CONST. REP:	PROJECT MGR:	ENGINEERING CONSULTANTS	NELSON - HALEY - PATTERSON AND QUIRK ENGINEERING CONSULTANTS	PARADISE HILLS - SANITARY SEWER PROFILES	6	SHEET 4
NO.	BY	DATE	APPROVED	REVISIONS	DATE: 11/15/80	SCALE: 1"=5'	SCALE: 1"=5'								