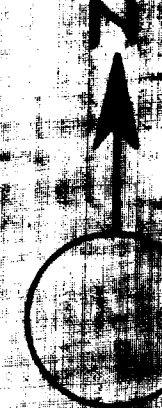
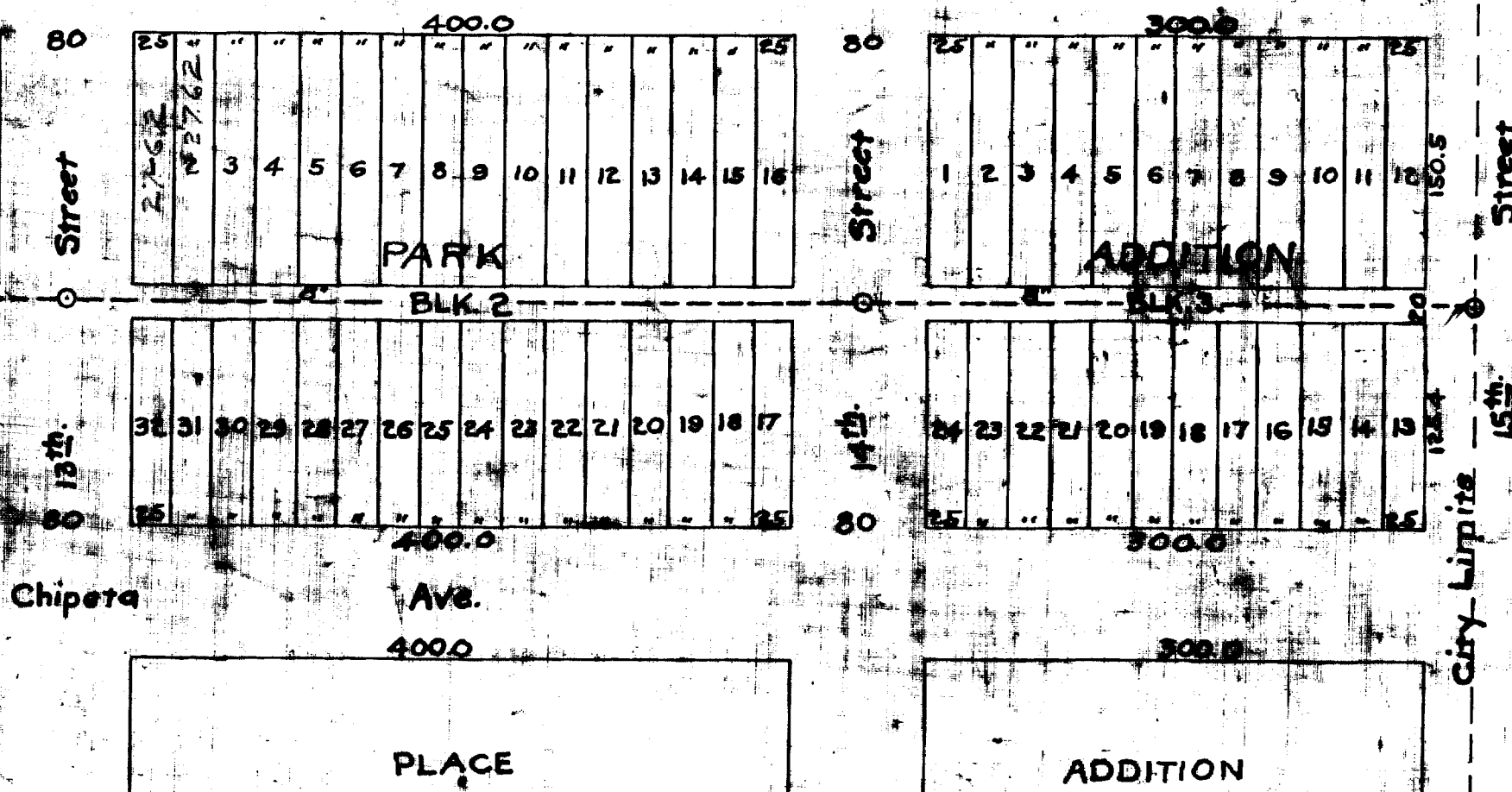
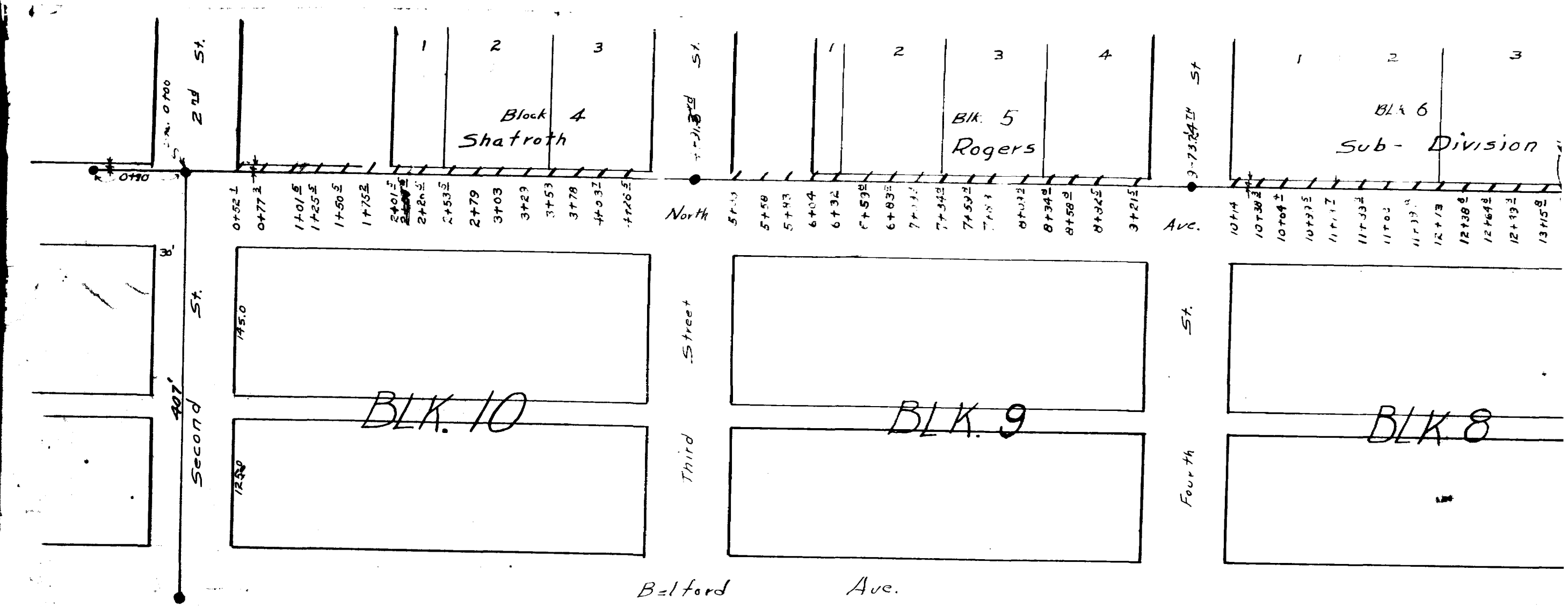


LINCOLN PARK

Gunnison Ave.

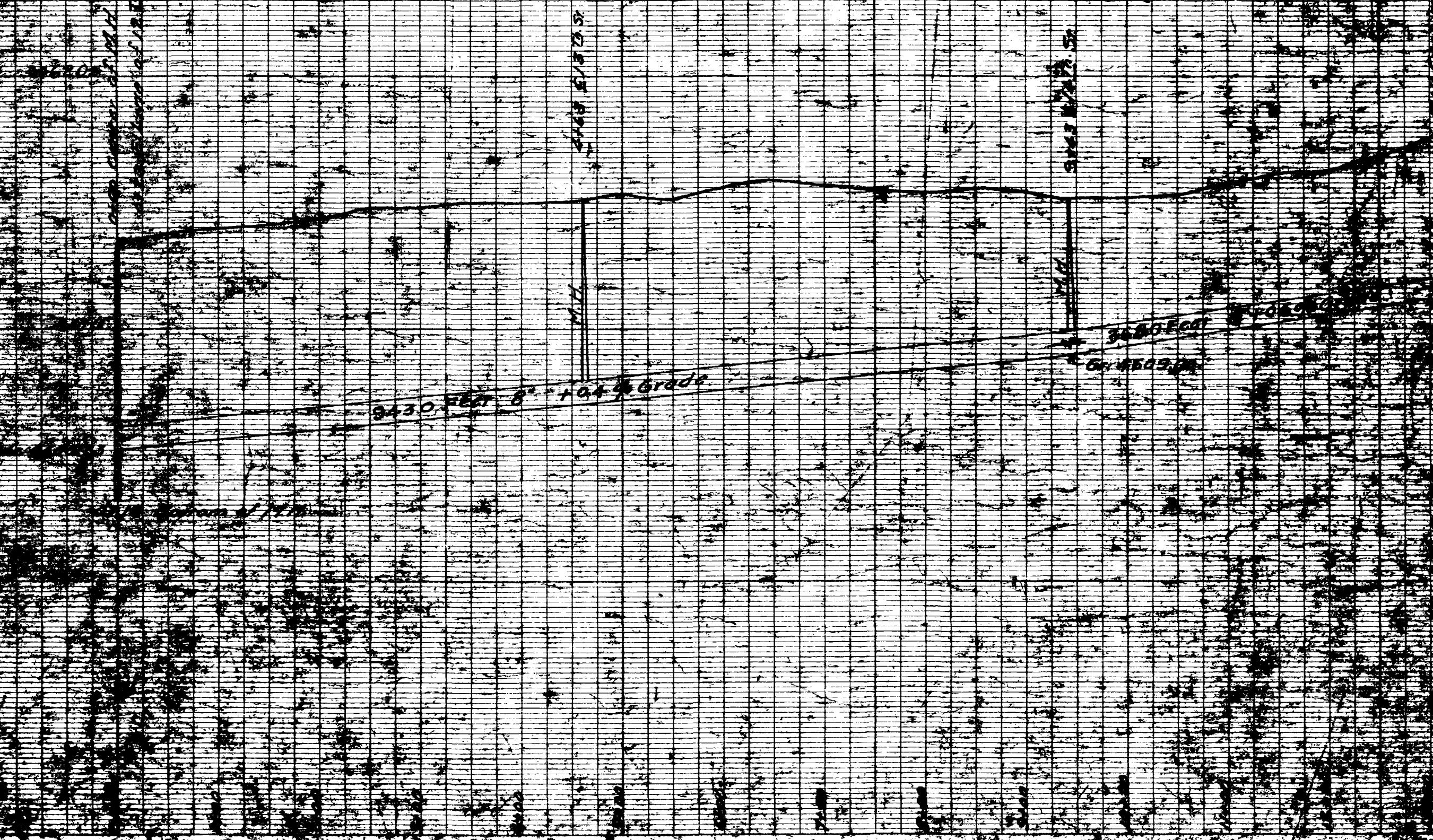


**MAP OF PROPOSED SEWER DISTRICT No. 7**  
 ASSESSMENT PER Sq. Ft. PRELIMINARY EST. = \$0.007219  
 ASSESSMENT PER LOT 25 BY 125 FT. PRELIM. EST. = \$2256  
 SUBMITTED MARCH 18, 1925 BY *S.E. Thompson,*  
 CITY ENGINEER



"Y" Locations of Sewer Dist. 7

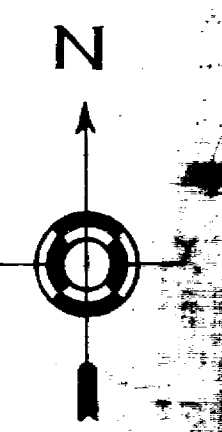
LINCOLN PARK ADDITION PROPOSED SANITARY SEWER DISTRICT No. 7  
 ALLEY BETWEEN CHIPETA AND GUNNISON AVENUES, FROM 25th TO 15th STS.  
 Scale: 1 Inch = 100 Feet Horizontal, 1 Inch = 5 Feet Vertical



Map of  
**SEWER DISTRICT No. 7.**

ASSESSMENT PER Sq. Ft. = \$0.003795.  
 ASSESSMENT PER LOT. 25' x 125' = \$1817.

Submitted  
 By \_\_\_\_\_ City Engineer.  
 Scale; 1 Inch = 100 Feet.



LINCOLN PARK.

Gunnison Ave.

