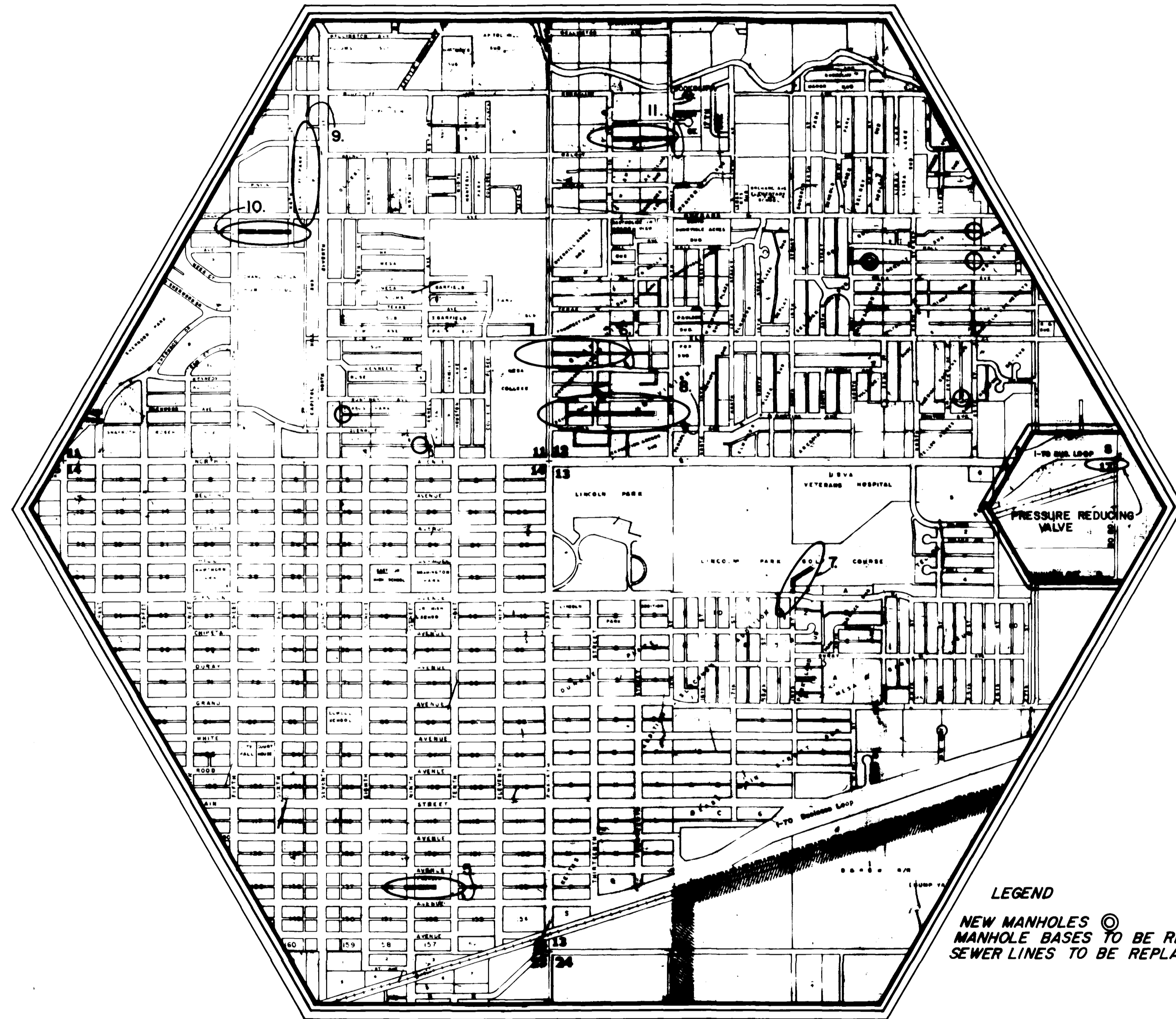


# SEWER REPLACEMENT PROJECT 1980-1981 & CLIFTON WATER LINE PRESSURE REDUCING VALVE



## INDEX OF SHEETS

1. Cover Sheet
2. City Drafting Standards & Abbreviations
3. Summary of Approximate Quantities
4. Clifton Water Line Pressure Reducing Valve & Vault
5. Emerson Park between Ute & Pitkin East of 9th St.
6. Alley from 12th St. to 13th St. between Elm & Kennedy
7. Lincoln Park & Veteran's Hospital
8. Alley from 13th St. to 15th St. between Bunting & Glenwood
9. Alley from Orchard to Walnut between 6th St. & 7th St.
10. Alley from 5th St. to 6th St. between Orchard & Hall
11. Alley from 13th St. to 15th St. between Walnut & Cedar
12. Standard Pavement Details -(ST-1)
13. Standard Sanitary Sewer Details -(ST-3)
- 14-17. Traffic Signing for Highway Construction-C.D.O.H.  
Std. S614-39A
18. Barricades, Drums, & Vertical Panel Channelizing  
Devices - C.D.O.H. Std. S614-52A

CITY OF  
GRAND JUNCTION

DEPARTMENT OF PUBLIC WORKS AND UTILITIES

ENGINEERING DIVISION



**BID TABULATION SHEET**  
SEWER REPLACEMENT PROJECT 1980-81  
and  
CLIFTON WATER LINE PRESSURE REDUCING VALVE

CONE  
CONSTRUCTION, INC.

FRANKLIN  
CONSTRUCTION CO.

R.L. ATKINS  
CONSTRUCTION, INC.

DACO  
CONSTRUCTION, INC.

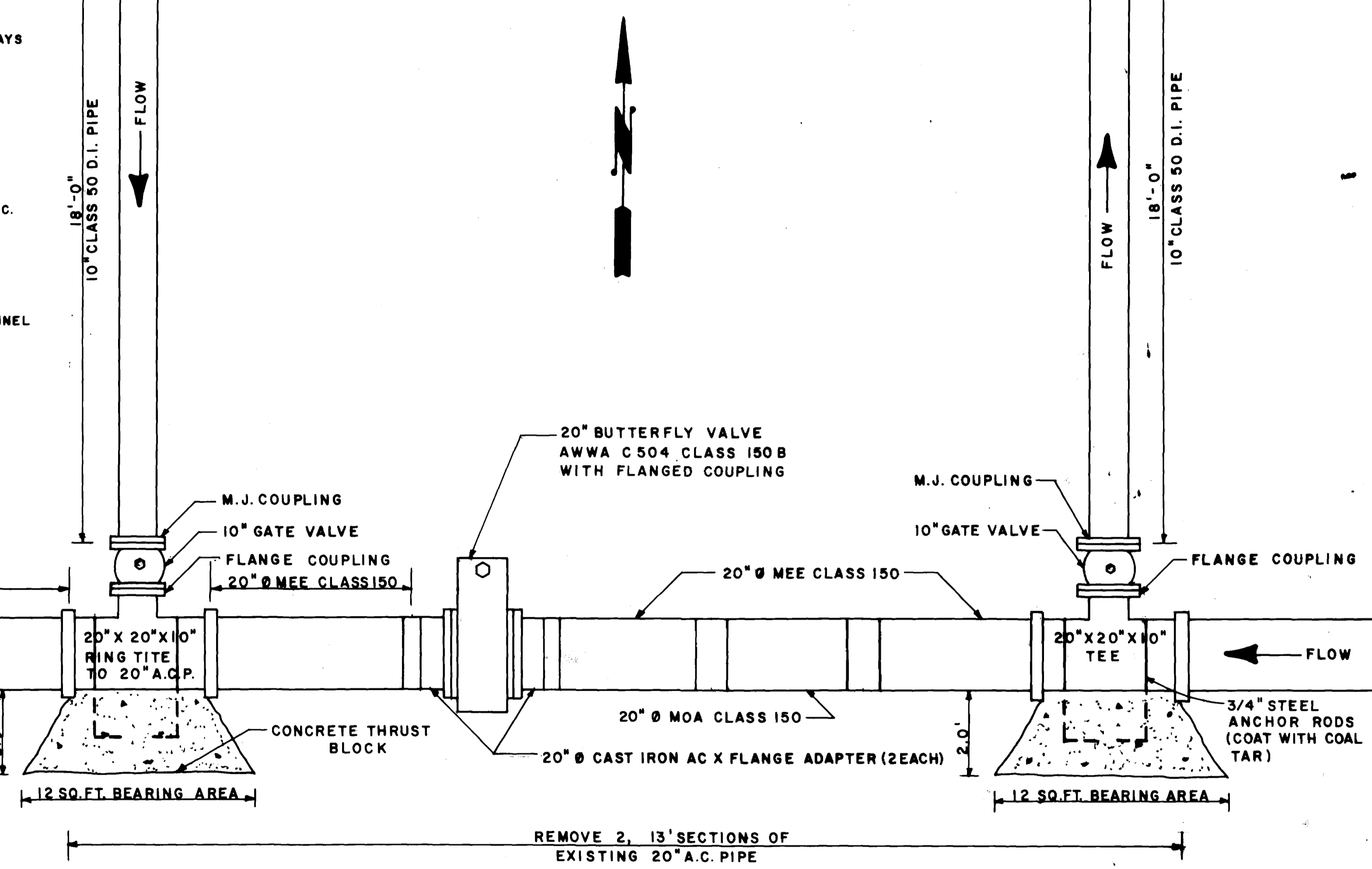
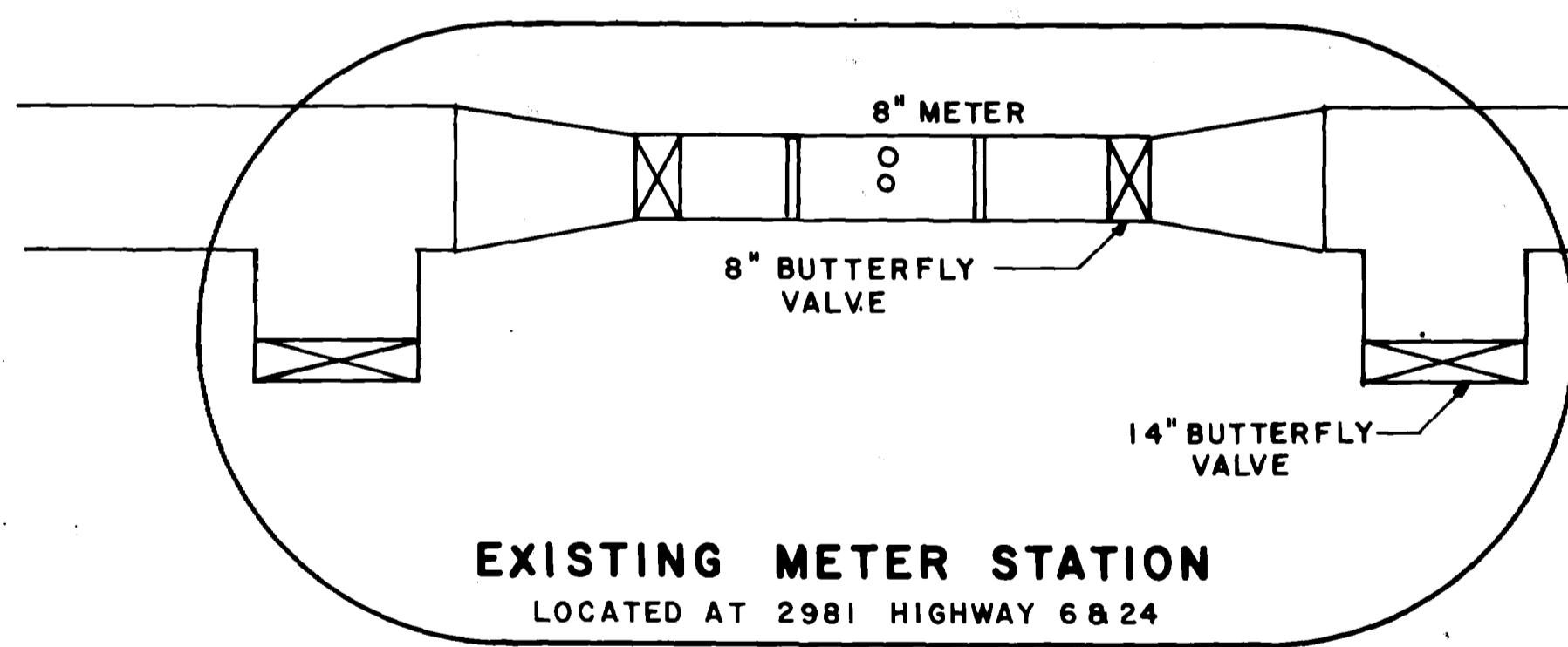
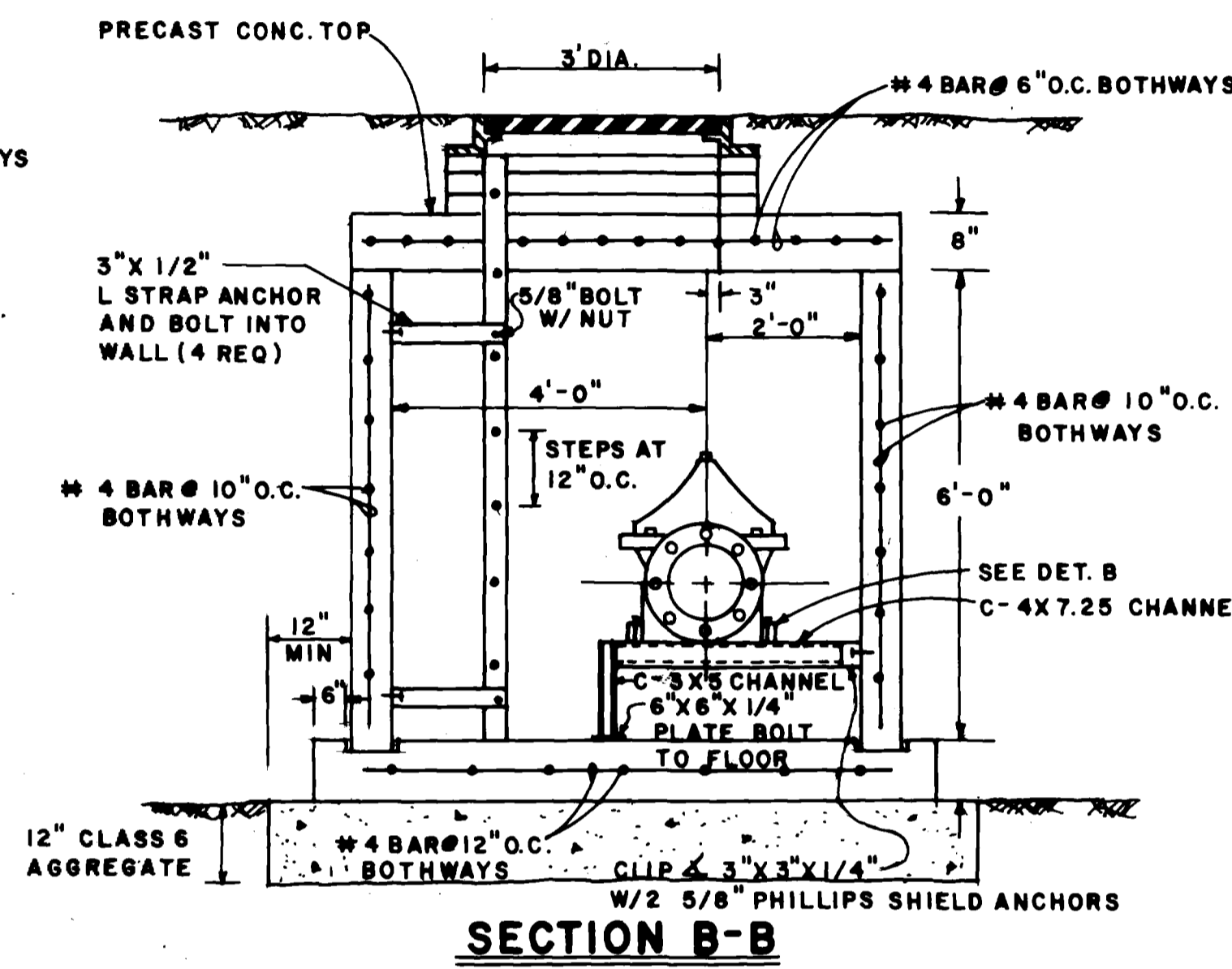
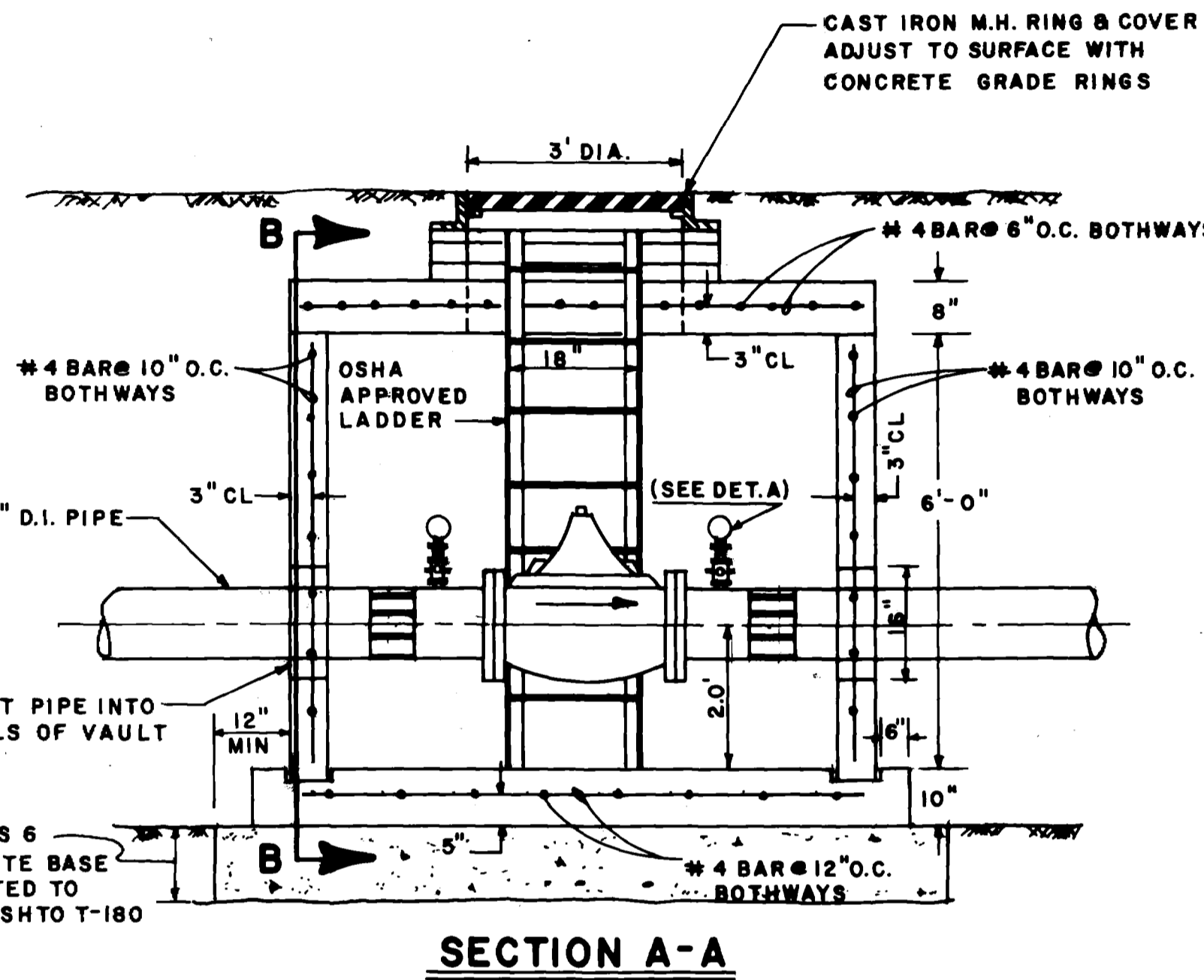
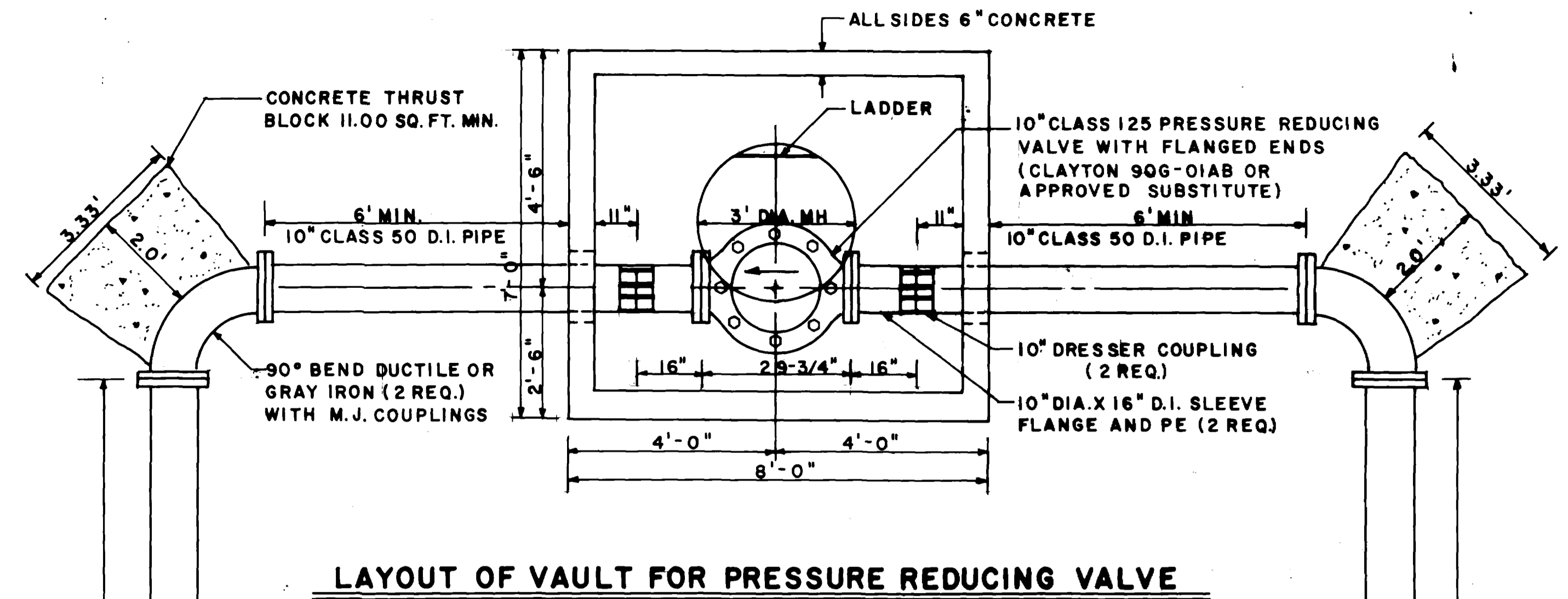
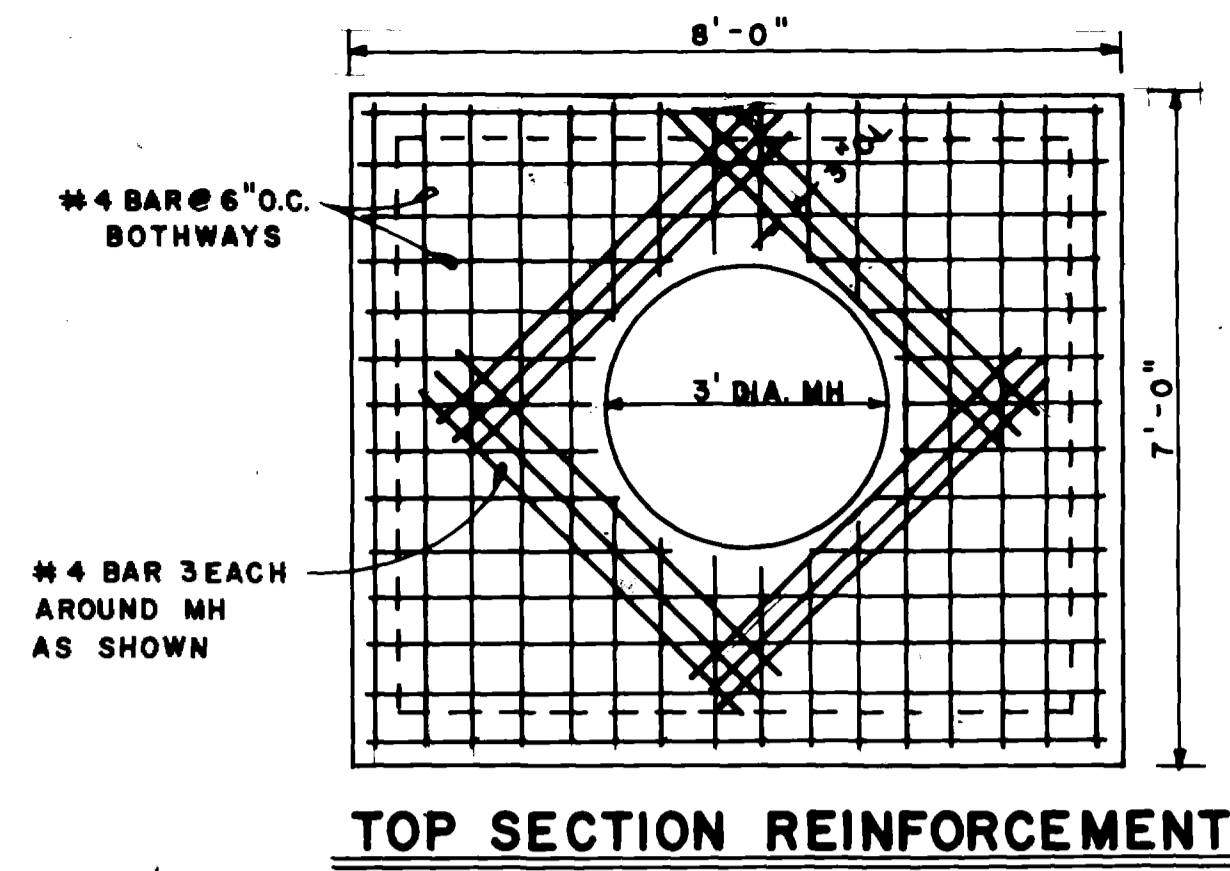
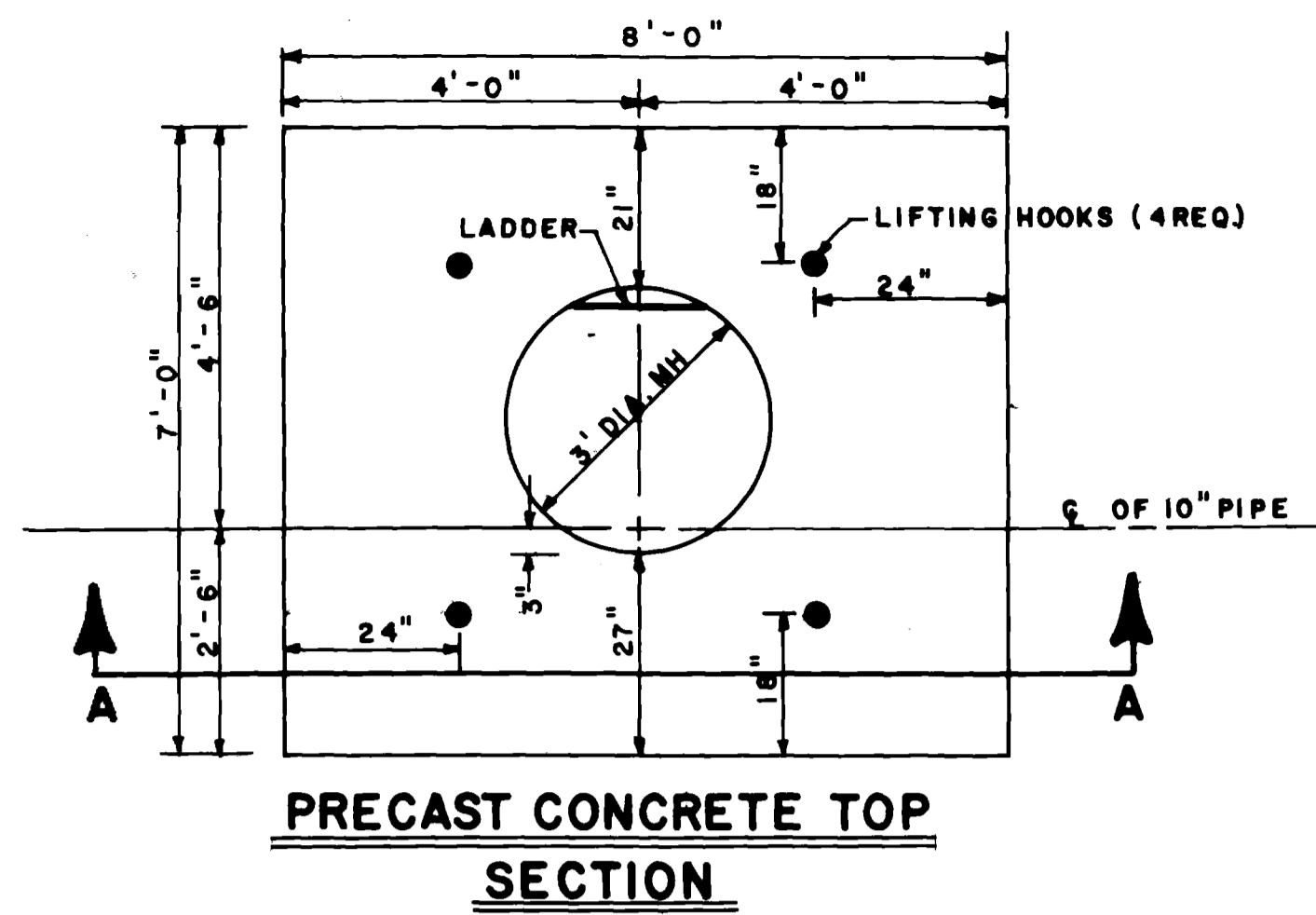
GRAND  
CONSTRUCTION CO.

ENGINEERS  
ESTIMATE

ITEM NO.	REF. NO.	CONTRACT ITEM	UNITS	QUANTITY	UNIT PRICE	TOTAL PRICE	UNIT PRICE	TOTAL PRICE	UNIT PRICE	TOTAL PRICE	UNIT PRICE	TOTAL PRICE	UNIT PRICE	TOTAL PRICE	UNIT PRICE	TOTAL PRICE	UNIT PRICE	TOTAL PRICE	UNIT PRICE	TOTAL PRICE
1		Pressure Reducing Valve and Vault (Clifton Water Line)	Lump Sum	Lump Sum	Lump Sum	21,000.00	Lump Sum	17,600.00	Lump Sum	22,000.00	Lump Sum	20,600.00	Lump Sum	22,000.00	Lump Sum	20,000.00				
MISCELLANEOUS MANHOLES																				
2		First manhole east of 7th Street between Glenwood and Bunting	Lump Sum	Lump Sum	Lump Sum	350.00	Lump Sum	1,500.00	Lump Sum	1,000.00	Lump Sum	1,100.00	Lump Sum	2,500.00	Lump Sum	700.00				
3		First Manhole west of Cannel between North Ave. and Glenwood Ave.	Lump Sum	Lump Sum	Lump Sum	350.00	Lump Sum	1,200.00	Lump Sum	650.00	Lump Sum	1,100.00	Lump Sum	2,500.00	Lump Sum	600.00				
4		Manhole in 11th Street between North Ave. and Belford Ave.	Lump Sum	Lump Sum	Lump Sum	350.00	Lump Sum	1,200.00	Lump Sum	650.00	Lump Sum	1,100.00	Lump Sum	2,500.00	Lump Sum	600.00				
5		Manhole at intersection of "T" alley south of Elm Ave. between 24th and 25th Streets	Lump Sum	Lump Sum	Lump Sum	350.00	Lump Sum	1,100.00	Lump Sum	650.00	Lump Sum	1,100.00	Lump Sum	2,500.00	Lump Sum	600.00				
6		Manhole in 25th Street between Mesa Ave. and Hall Ave.	Lump Sum	Lump Sum	Lump Sum	350.00	Lump Sum	1,200.00	Lump Sum	650.00	Lump Sum	1,100.00	Lump Sum	2,500.00	Lump Sum	600.00				
7		Manhole in 25th Street between Hall Ave. and Orchard Ave.	Lump Sum	Lump Sum	Lump Sum	350.00	Lump Sum	1,200.00	Lump Sum	650.00	Lump Sum	1,200.00	Lump Sum	2,500.00	Lump Sum	600.00				
8		Construct new manhole (5-10' deep) at end of existing 6" sewer line 290 feet east of manhole in intersection of 21st St. and alley between Mesa Ave. and Hall Ave.	Lump Sum	Lump Sum	Lump Sum	700.00	Lump Sum	850.00	Lump Sum	1,300.00	Lump Sum	1,500.00	Lump Sum	3,000.00	Lump Sum	900.00				
SEWER LINE REPLACEMENT																				
9		6" Sewer service pipe	L.F.	240	12.00	2,880.00	12.00	2,880.00	13.85	3,324.00	18.75	4,500.00	20.00	4,800.00	12.00	2,880.00				
10		8" Sanitary sewer pipe	L.F.	3,339	15.00	51,135.00	14.00	46,746.00	16.35	54,592.65	14.90	49,751.10	37.00	123,543.00	16.00	53,424.00				
11		10" Sanitary sewer pipe	L.F.	196	18.00	3,528.00	16.00	3,136.00	17.25	3,381.00	14.05	2,753.80	39.00	7,644.00	18.00	3,528.00				
12		18" Vitrified Clay sewer pipe	L.F.	164	40.00	6,560.00	34.00	5,576.00	30.00	4,920.00	43.20	7,084.80	60.00	9,840.00	40.00	6,560.00				
13		6" Service line connection	Each	1	135.00	135.00	100.00	200.00	85.00	85.00	153.00	153.00	85.00	350.00	200.00	200.00				
14		4" Service line connection	Each	89	50.00	4,450.00	85.00	16,465.00	85.00	7,565.00	217.00	19,313.00	75.00	15,575.00	150.00	13,350.00				
15		4' dia. manhole (0'-5' deep)	Each	2	450.00	900.00	700.00	1,400.00	700.00	1,400.00	635.00	1,270.00	1000.00	2,000.00	750.00	1,500.00				
16		4' dia. manhole (5'-10' deep)	Each	7	730.00	5,110.00	1000.00	7,000.00	850.00	5,950.00	1154.00	8,078.00	300.00	9,100.00	900.00	6,300.00				
17		Reconstruct concrete manhole base	Each	2	350.00	700.00	700.00	1,800.00	650.00	1,300.00	1225.00	2,450.00	850.00	1,700.00	600.00	1,200.00				
18		Backfill existing manhole	Each	7	200.00	1,400.00	100.00	700.00	200.00	1,400.00	105.00	735.00	100.00	700.00	200.00	1,400.00				
19		Granular stabilization material	Ton	350	7.00	2,450.00	6.50	2,275.00	11.00	3,850.00	8.90	3,115.00	10.00	3,500.00	8.50	2,975.00				
20		Pavement replacement	Sq.Yd.	366	25.00	9,150.00	15.00	5,490.00	22.00	8,052.00	22.95	8,399.70	30.00	10,980.00	18.00	6,588.00				
21		Replace gravel surface over trench (6" thick)	Sq.Yd.	1,029	6.00	6,174.00	4.70	4,836.30	7.50	7,717.50	4.35	4,476.15	4.00	4,116.00	5.00	5,145.00				
22		Replace concrete driveway, sidewalk or gutter pan (6" thick)	Sq.Yd.	19	40.00	760.00	90.00	1,710.00	92.50	1,757.50	20.15	382.85	60.00	1,140.00	20.00	380.00				
23		Replace concrete sidewalk (5' wide, 4" thick)	L.F.	10	15.00	150.00	26.00	260.00	8.25	82.50	9.25	92.50	15.00	150.00	10.00	100.00				
24		Replace concrete curb and gutter (2' wide)	L.F.	50	10.00	500.00	15.00	750.00	6.60	330.00	9.25	462.50	15.00	750.00	10.00	500.00				
25		Replace concrete curb (6" wide)	L.F.	10	10.00	100.00	9.00	90.00	33.00	330.00	6.25	62.50	10.00	100.00	6.00	60.00				
26		Replace concrete curb, gutter and sidewalk (5' wide)	L.F.	20	20.00	400.00	12.00	240.00	16.50	330.00	12.50	250.00	20.00	400.00	14.00	280.00				
27		8" Class 50 ductile iron pipe	L.F.	70	20.00	1,400.00	19.00	1,330.00	22.85	1,599.50	16.00	1,120.00	50.00	3,500.00	20.00	1,400.00				
TOTAL BID						\$121,602.00		\$127,404.30		\$135,516.65		\$143,249.90		\$239,888.00		\$132,370.00				

# SUMMARY OF APPROXIMATE QUANTITIES

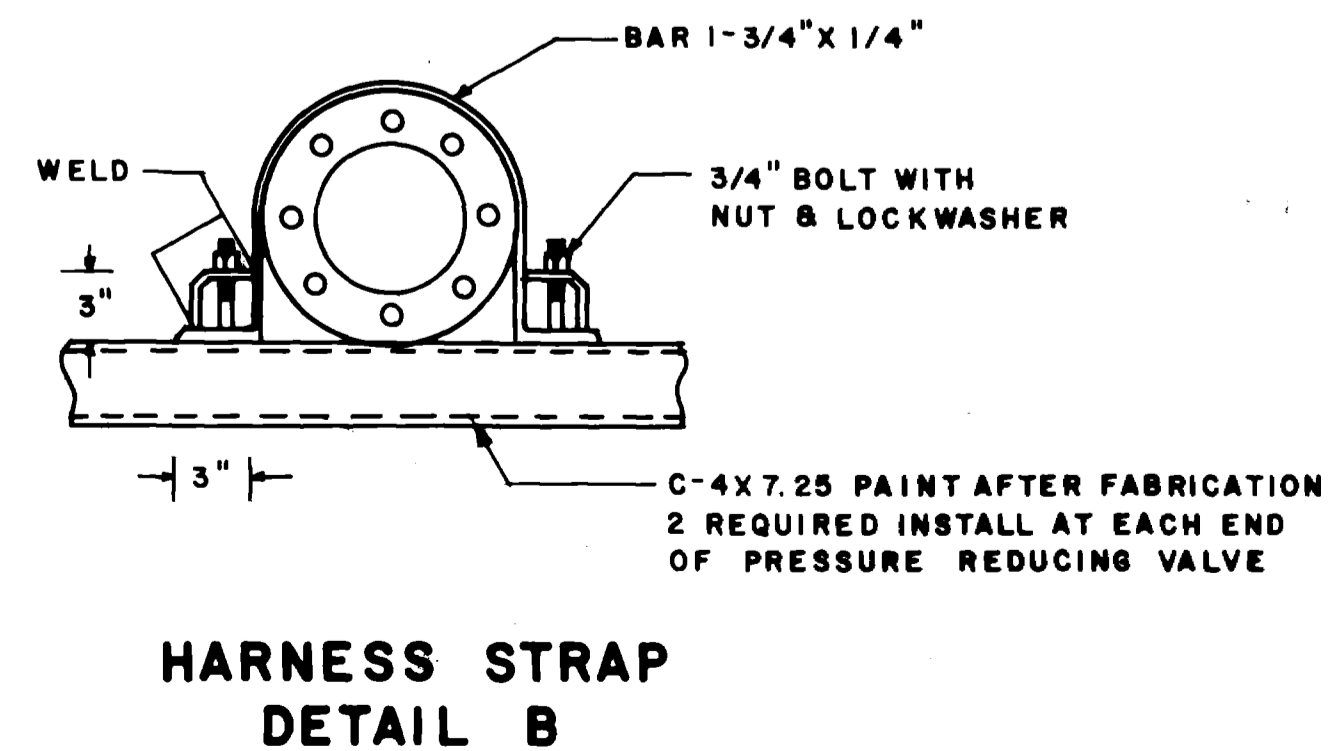
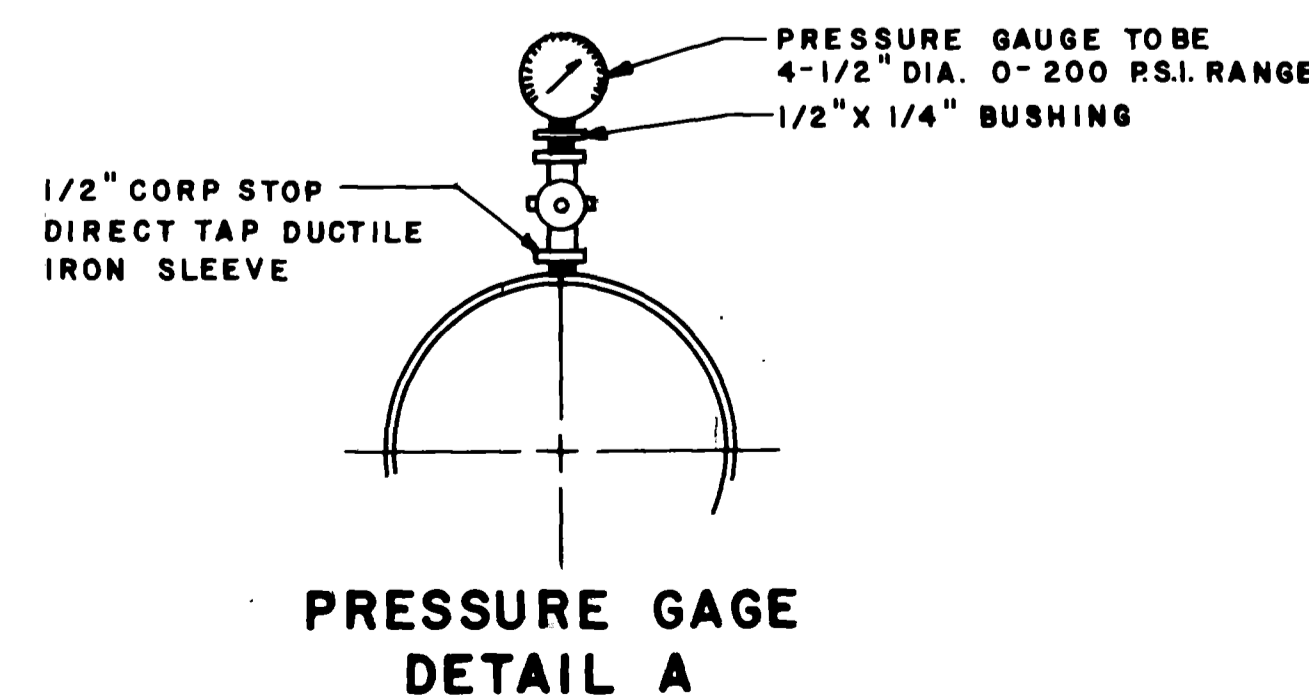
ITEM NO.	CONTRACT ITEM	UNIT	TOTAL QUANTITY															
1	Pressure Reducing Valve and Vault (Clifton Water Line)	Lump Sum	Lump Sum															
2 thro 8	Miscellaneous Manholes (See Proposal Form)	Lump Sum	Lump Sum															
9	6" Sewer Service Pipe	Lineal Feet	240															
10	8" Sanitary Sewer Pipe	Lineal Feet	3,409															
11	10" Sanitary Sewer Pipe	Lineal Feet	196															
12	18" Vitrified Clay Sewer Pipe	Lineal Feet	164															
13	6" Service Line Connection	Each	1															
14	4" Service Line Connection	Each	89															
15	4' Dia. Manhole (0'-5' Deep)	Each	2															
16	4' Dia. Manhole (5'-10' Deep)	Each	7															
17	Reconstruct Concrete Manhole Base	Each	2															
18	Backfill Existing Manhole	Each	7															
19	Granular Stabilization Material	Ton	350															
20	Pavement Replacement	Sq. Yd.	366															
21	Replace Gravel Surface Over Trench (6" Thick)	Sq. Yd.	1,029															
22	Replace Concrete Driveway, Sidewalk or Gutter Pan (6" Thick)	Sq. Yd.	19															
23	Replace Concrete Sidewalk (5' wide, 4" thick)	Lineal Feet	10															
24	Replace Concrete Curb and Gutter (2' wide)	Lineal Feet	50															
25	Replace Concrete Curb (6" wide)	Lineal Feet	10															
26	Replace Concrete Curb, Gutter and Sidewalk (5' wide)	Lineal Feet	20															
27	<b>8" DUCTILE IRON PIPE, CLASS 50</b>	<b>LINEAL FEET</b>	<b>70</b>															



**NOTES:**

1. BASE FOR CONCRETE VAULT SHALL BE CAST IN PLACE
2. THE BOX AND TOP OF THE VAULT MAY BE PRECAST
3. ALL CONCRETE SHALL BE C.D.O.H. CLASS B REINFORCING STEEL SHALL BE GRADE 60
4. NOTIFY RALPH STERRY (CITY UTILITIES SUPERINTENDENT 243-2633 EXT. 243) AT LEAST 48 HOURS PRIOR TO SHUT DOWN OF 20" LINE
5. THE CONTRACTOR SHALL FURNISH AND INSTALL ALL MATERIALS REQUIRED
6. WRAP ALL D.I. PIPE, FITTINGS, VALVES AND OTHER METAL SURFACES WITH POLYETHYLENE ENCASEMENT MATERIAL PRIOR TO BACKFILLING

**DETAILS**



REVISION	DESCRIPTION	DATE	DRAWN BY	DATE	CHECKED BY	DATE	APPROVED BY	DATE	FIELD BOOK NO.	PAGE	SCALE	PLAN	PROFILE
REVISION A			TLG	11-26-80	TAB	12-12-80	JDN	12-18-80					
REVISION B													
REVISION C													
REVISION D													

**DEPARTMENT OF PUBLIC WORKS AND UTILITIES  
ENGINEERING DIVISION  
CITY OF GRAND JUNCTION, COLORADO**

**CLIFTON WATER LINE  
PRESSURE REDUCING VALVE AND VAULT**

SHEET NO. 4  
OF \_\_\_\_\_  
FILE NO. \_\_\_\_\_

**NOTES**

1. All concrete and asphalt pavement shall be removed along neatly cut lines or existing joints.
2. Remove & Replace asphalt pavement in accordance with typical trench detail shown on Sheet No. 13 (42" max pay width)
3. Remove concrete curb, gutter, sidewalk and driveway slabs in 10' wide sections. All concrete replacement shall be by licensed cement contractor.
4. Sod removal and replacement by City Parks Dept.

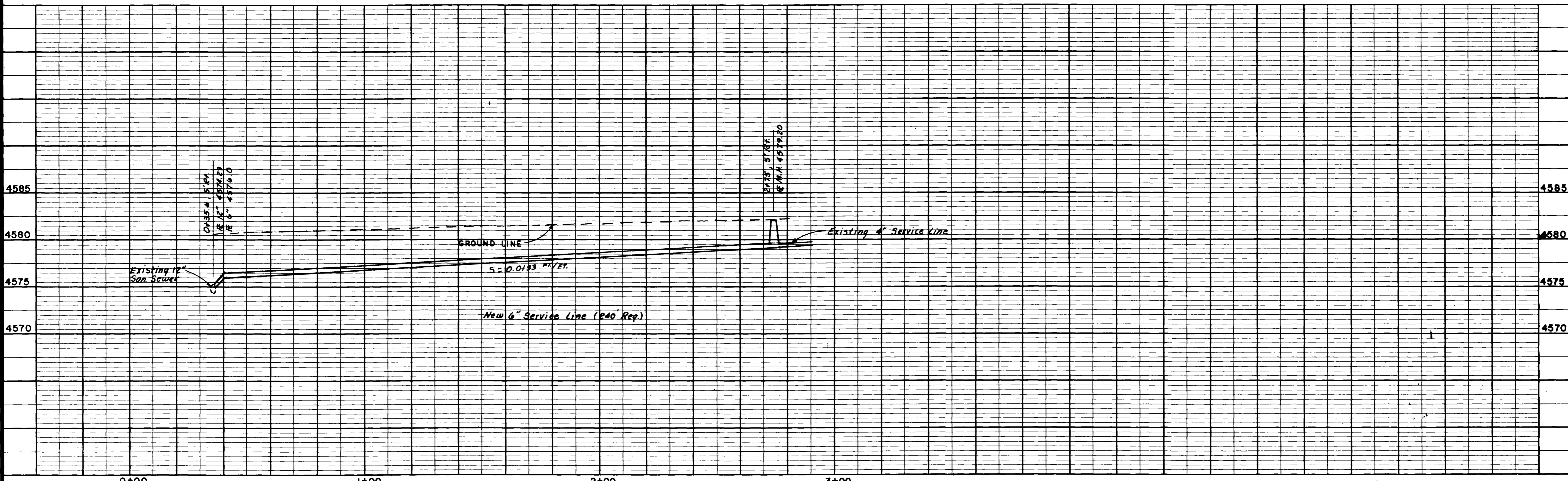
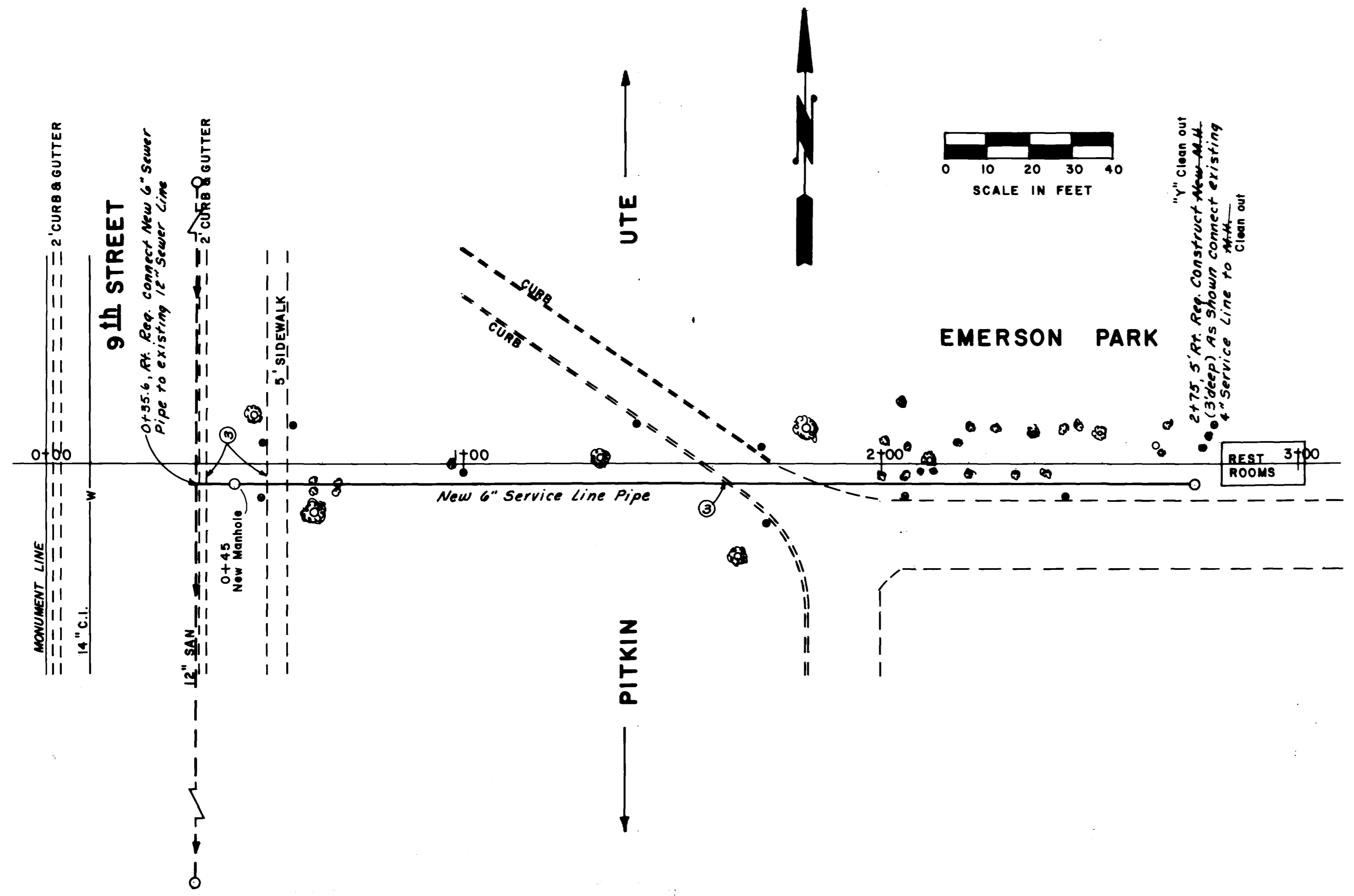
**CONTRACT PAY ITEMS**

CONTRACT ITEM No.	DESCRIPTION	APPROXIMATE QUANTITIES
9	6" Sewer Service Pipe	240' L.F.
15	4' Dia. Manhole (0' to 5' deep)	1 Each
20	Pavement Replacement (Based on 42" max width)	8 SQ. YD.
23	Replace Concrete Sidewalk (5' wide, 4" thick)	10 L.F.
25	Replace Concrete Curb (6" wide)	10 L.F.
24	Replace Concrete Curb & Gutter (2' wide)	10 L.F.
19	Granular Stabilization Material	50 Ton
13	6" Service Line Connection	1 Each

**INCIDENTAL ITEMS**

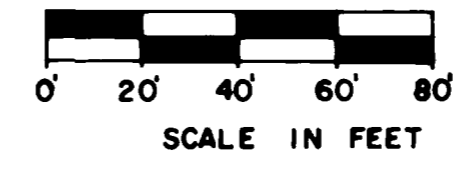
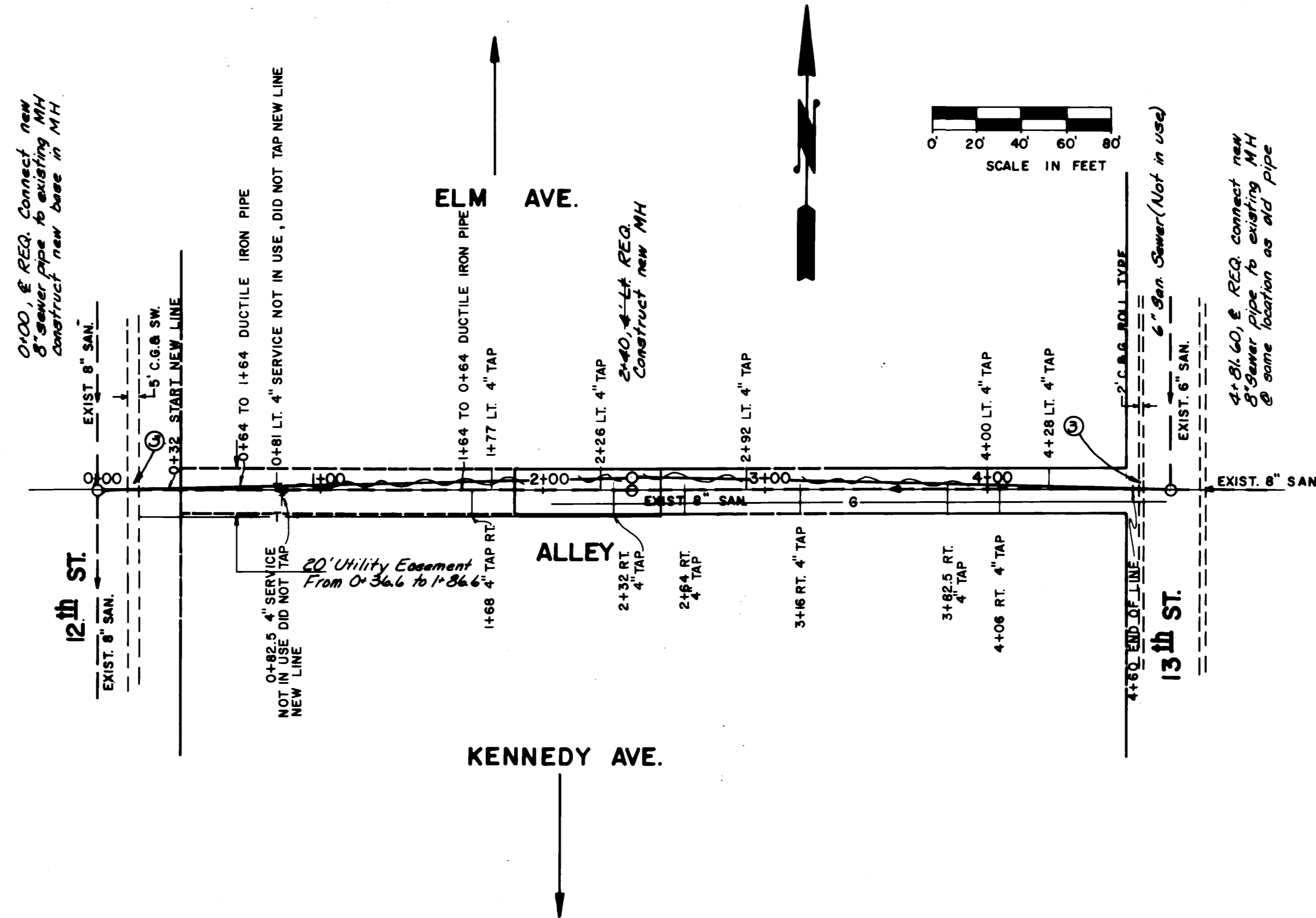
(WILL NOT BE PAID FOR SEPARATELY)

Remove Asphalt Pavement	8	SQ. YD.
Remove Concrete Slabs	9	SQ. YD.
Aggregate Base Course Under Pavement (Class 6)	3	Ton
Granular Bedding and Haunching Material	10	Ton



REVISION $\Delta$ AS BUILT INFORMATION REVISION $\Delta$ REVISION $\Delta$ REVISION $\Delta$	DATE 8-27-81 DATE 12-12-80 DATE 12-16-80 FIELD BOOK NO. LL11	DRAWN BY TLG CHECKED BY TAB APPROVED BY JDN PAGE 106	DATE 12-10-80 DATE 12-12-80 DATE 12-16-80 PAGE 106	SCALE PLAN HORIZ. 1" = 20' PROFILE HORIZ. 1" = 20' VERT. 1" = 5'	<b>DEPARTMENT OF PUBLIC WORKS AND UTILITIES</b> <b>ENGINEERING DIVISION</b> <b>CITY OF GRAND JUNCTION, COLORADO</b>	<b>SEWER REPLACEMENT PROJECT 1980-81</b> <b>EMERSON PARK BTWN. UTE &amp; PITKIN E/O 9th ST.</b> CONSTRUCTION PLAN AND PROFILE	SHEET NO. 5 OF _____ FILE NO.
---	---	---	---	---	---	---	-------------------------------------

NOTE: NEW LINE LAID ALONG ALIGNMENT OF OLD LINE



**NOTES:**

- All concrete and asphalt pavement shall be removed along neatly cut lines or existing joints
- Remove & Replace asphalt pavement in accordance with typical trench detail shown on sheet No. 13 (44" max. pay width)
- Remove concrete curb, gutter, sidewalk and driveway slabs in 10' wide sections. All concrete replacement shall be by licensed cement contractor
- Replace gravel surface on Alley over full width of trench (44" max. pay width) Use C.D.O.H. class 6 aggregate base course (6" thick)

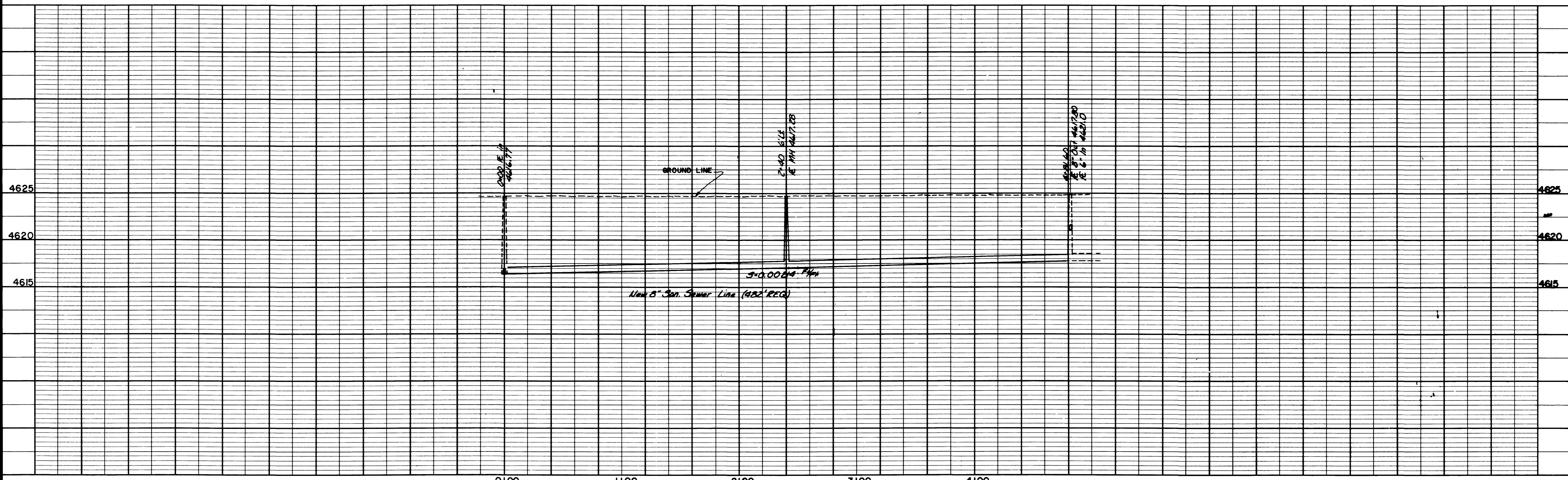
**CONTRACT PAY ITEMS:**

CONTRACT ITEM No.	DESCRIPTION	APPROXIMATE QUANTITIES
10	8" San. Sewer Pipe	482 L.F.
16	4' Dia. Manhole (5' to 10' deep)	1 Each
17	Reconstruct Concrete Manhole Base	1 Each
20	Pavement Replacement (Base on 44" max. width)	11 SQ. YD.
21	Replacement Gravel Surface Over Trench (6" thick) (Based on 44" max. width) Sta. 1+76 to 4+68.40	120 SQ. YD.
19	Granular Stabilization Material	50 Ton
24	Replace Concrete Curb & Gutter (2' wide)	10 L.F.
26	Replace Concrete Curb, Gutter & Sidewalk (5' wide)	10 L.F.
14	4" Service Line Connection	4 Each

**INCIDENTAL ITEMS:**

(WILL NOT BE PAID FOR SEPARATELY)

Remove Asphalt Pavement	11	SQ. YD.
Remove Concrete Slabs	8	SQ. YD.
Aggregate Base Course Under Pavement (Class 6)	4	Ton
Granular Bedding and Haunching Material	43	Ton



DESCRIPTION	DATE	DRAWN BY	DATE
REVISION A "AS BUILT INFORMATION"	8-28-81	T.A.B.	11-28-80
REVISION B		T.A.B.	12-12-80
REVISION C		J.D.M.	12-18-80
REVISION D			

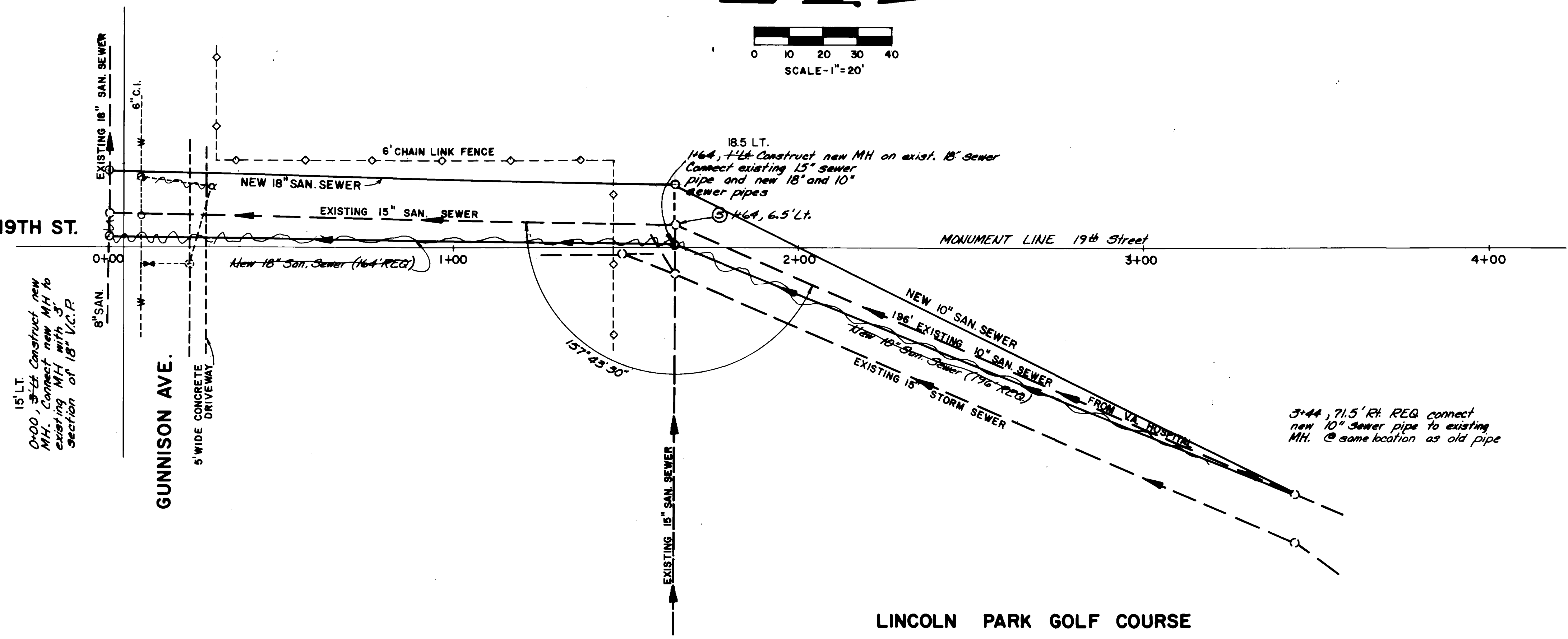
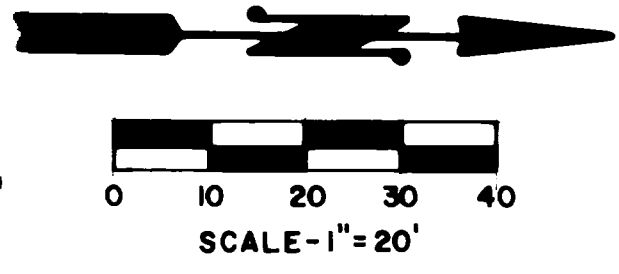
SCALE: PLAN HORIZ. 1"=40' PROFILE HORIZ. 1"=40' VERT. 1"=5'

FIELD BOOK NO. 1111 PAGE 35

**DEPARTMENT OF PUBLIC WORKS AND UTILITIES**  
**ENGINEERING DIVISION**  
**CITY OF GRAND JUNCTION, COLORADO**

**SEWER REPLACEMENT PROJECT 1980-81**  
**ALLEY- 12TH TO 13TH BTWN. ELM & KENNEDY**  
**CONSTRUCTION PLAN AND PROFILE**

SHEET NO. 6
OF
FILE NO.



**NOTES:**

1. All concrete and Asphalt pavement shall be removed along neatly cut lines or existing joints
2. Remove & Replace asphalt pavement in accordance with typical trench detail shown on sheet No. 13 (54" max pay width)
3. Remove concrete curb, gutter, sidewalk and driveway slabs in 10' wide sections. All concrete replacement shall be by licensed cement contractor
4. Replace gravel surface over full width of trench (34" max pay width). Use C.O.M. class 6 aggregate base course (6" thick) (Sta. 0+23.9 to 1+41.8)
5. Remove MH ring, cover, & grade rings and deliver to City Shops. Backfill manhole with 1/2" washed rock or other approved material
6. Sod removal and replacement by City Parks Dept.

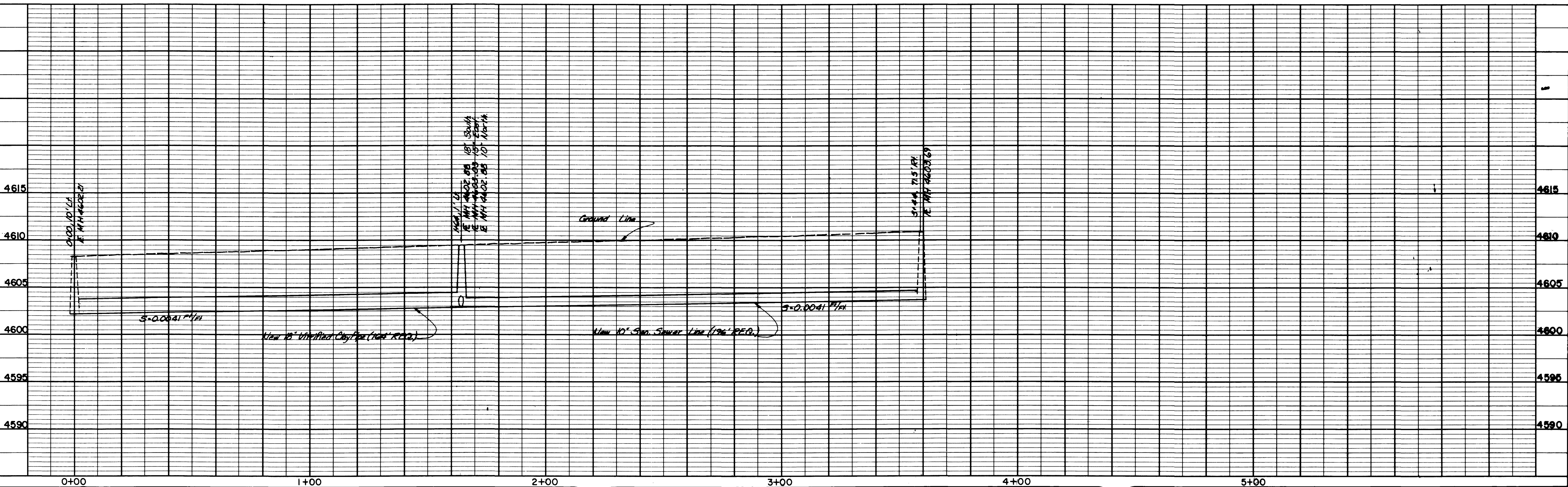
**CONTRACT PAY ITEMS:**

CONTRACT ITEM No.	DESCRIPTION	APPROXIMATE QUANTITIES
11	10" San. Sewer Pipe	196 L.F.
12	18" Vitrified Clay Sewer Pipe	164 L.F.
16	4' Dia. Manhole (5' to 10' deep)	2 Each
20	Pavement Replacement (Based on 54" max width)	10 SQ. YD.
21	Replace Gravel Surface Over Trench (6" thick) (Based on 54" max width)	59 SQ. YD.
22	Replace Concrete Driveway, Sidewalk or Gutter Pan (6" thick) (Based on 10' Removal width)	6 SQ. YD.
19	Granular Stabilization Material	50 Ton
18	Backfill Existing Manhole	1 Each

**INCIDENTAL ITEMS:**

(WILL NOT BE PAID FOR SEPARATELY)

Remove Asphalt Pavement	10	SQ. YD.
Remove Concrete Slabs	6	SQ. YD.
Aggregate Base Course Under Pavement (Class 6)	3	Ton
Granular Bedding & Haunching Material	45	Ton



REVISION Δ	DATE	DRAWN BY NOP	DATE 12-3-80
REVISION Δ		CHECKED BY TAB	DATE 12-12-80
REVISION Δ		APPROVED BY JDM	DATE 12-18-80
REVISION Δ		FIELD BOOK NO. L111	PAGE 105

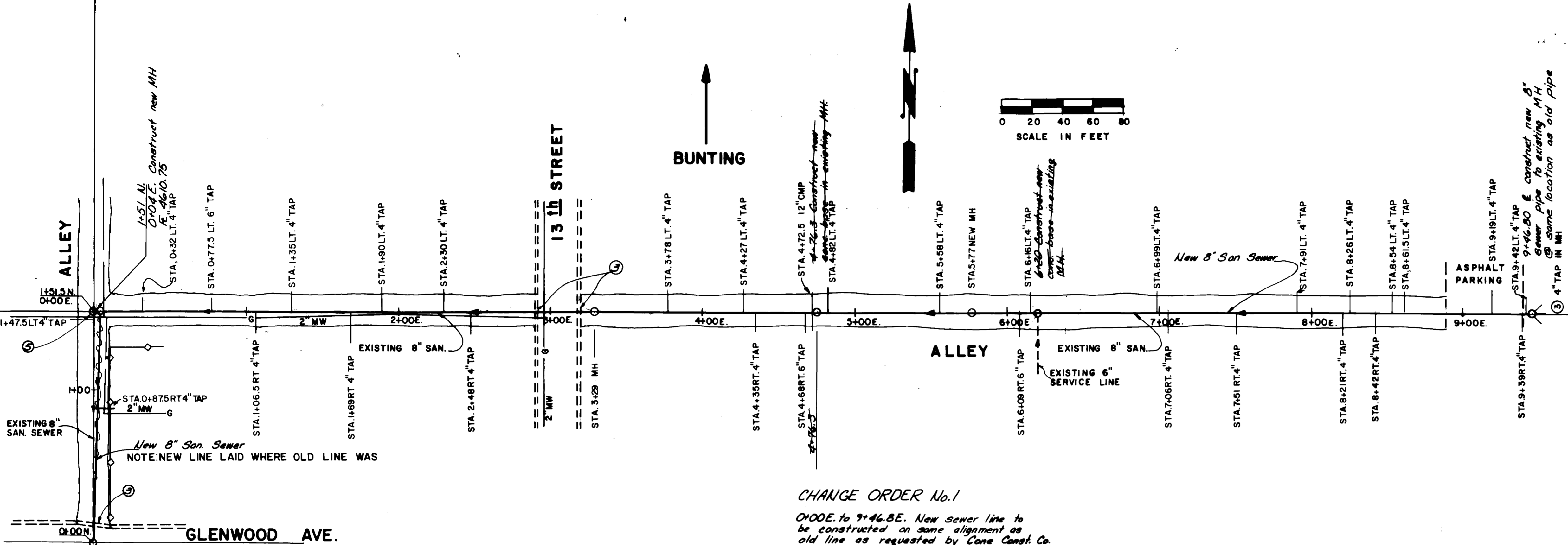
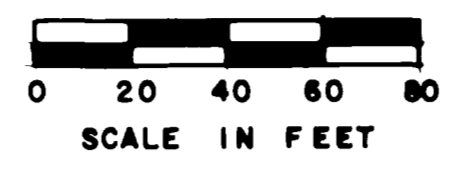
**DEPARTMENT OF PUBLIC WORKS AND UTILITIES**  
**ENGINEERING DIVISION**  
**CITY OF GRAND JUNCTION, COLORADO**

**SEWER REPLACEMENT PROJECT 1980-81**  
**LINCOLN PARK & VETERAN'S HOSPITAL**  
**CONSTRUCTION PLAN & PROFILE**

SHEET NO. 7  
 OF \_\_\_\_\_  
 FILE NO. \_\_\_\_\_

**NOTES:**

- All concrete and asphalt pavement shall be removed along neatly cut lines or existing joints
- Remove & Replace asphalt pavement in accordance with typical trench detail shown on sheet No. 13 (44" max. pay width)
- Remove concrete curb, gutter, sidewalk and driveway slabs in 10' wide sections. All concrete replacement shall be by licensed cement contractor.
- Replace gravel surface on Alley over full width of trench (44" max pay width) Use C.D.O.H. class 6 agg. base course (6" thick)
- Remove MH ring, cover & grade rings and deliver to City Shops. Backfill manhole with 1/2" washed rock or other approved material

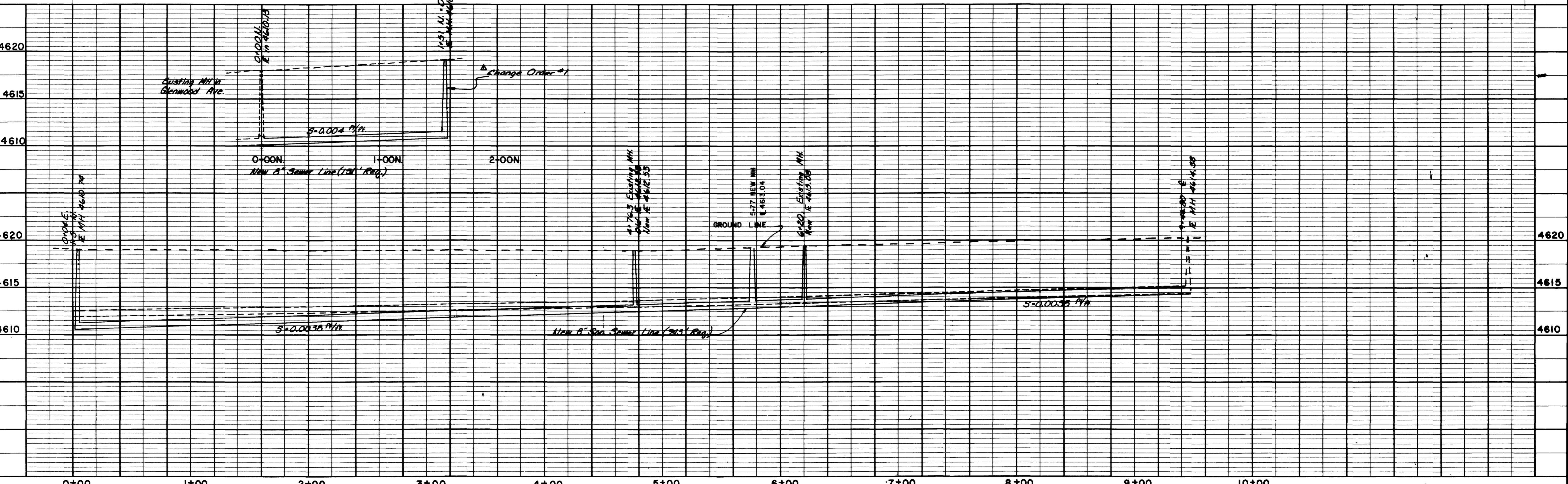


**CHANGE ORDER No. 1**  
 0+00E to 9+46.8E. New sewer line to be constructed on same alignment as old line as requested by Cone Const. Co.

CONTRACT ITEM No.	DESCRIPTION	APPROXIMATE QUANTITIES
10	8" San Sewer Pipe	1090 L.F.
16	4' Dia. Manhole (5' to 10' deep)	2 Each
17	Reconstruct conc. Manhole Base	2 L.F.
20	Pavement Replacement (Based on 44" max. width)	37 SQ. YD.
19	Granular Stabilization Material	50 Ton
18	Backfill Existing Manhole	1 Each
24	Replace Concrete Curb & Gutter (2' wide)	20 L.F.
14	4" Service Line Connection	27 Each
13	6" Service Line Connection	1 Each

**INCIDENTAL ITEMS (WILL NOT BE PAID FOR SEPARATELY)**

Remove Asphalt Pavement	37	SQ. YD.
Remove Concrete Slabs	5	SQ. YD.
Aggregate Base Course Under Pavement (Class 6)	12	Ton
Granular Bedding & Haunching Material	98	Ton



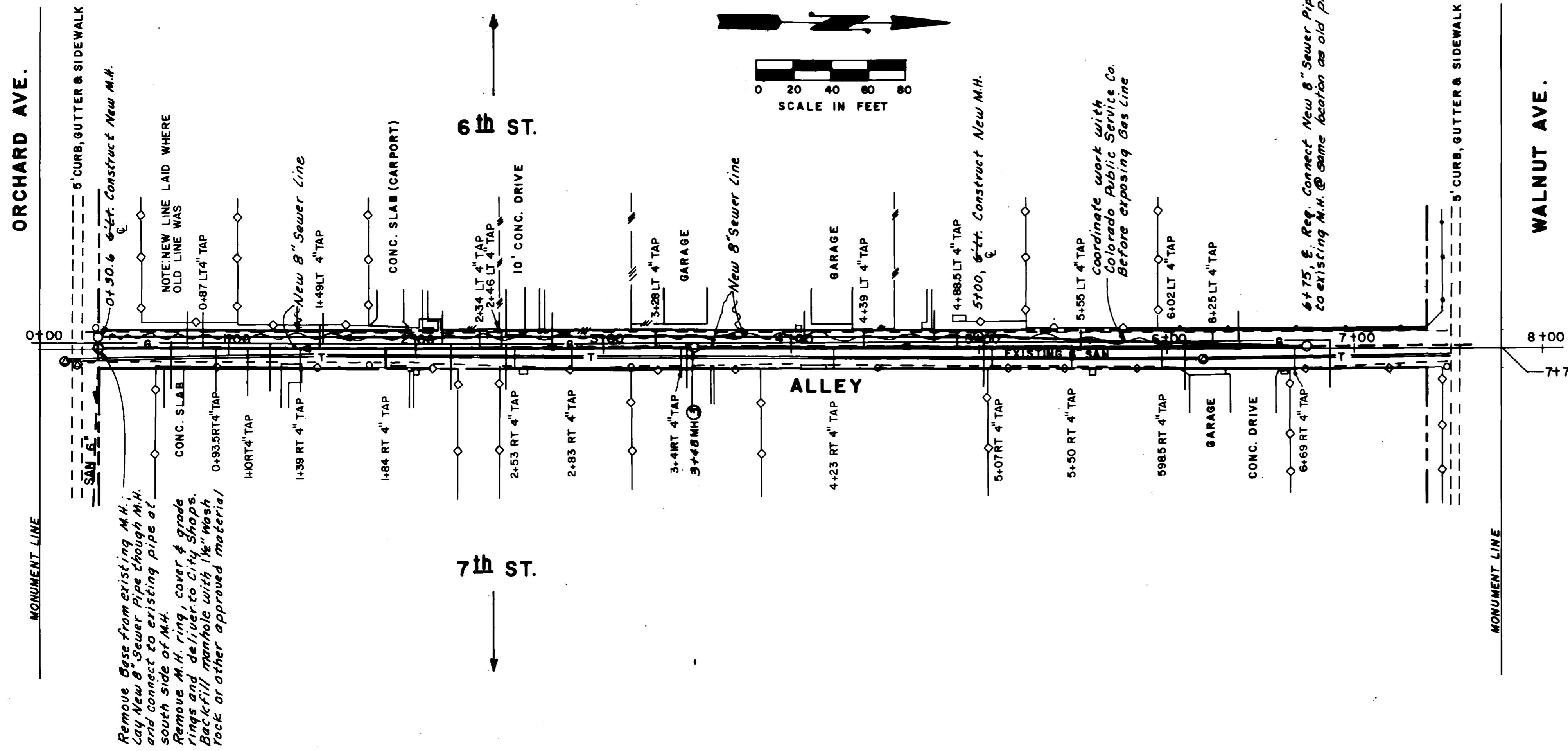
DESCRIPTION	DATE	DRAWN BY	N.O.P.	DATE	11-80
REVISION $\Delta$ Change Order #1	1-2-81	CHECKED BY	T.A.B.	DATE	12-12-80
REVISION $\Delta$ AS BUILT	9-18-81	APPROVED BY	J.D.N.	DATE	12-12-80
REVISION $\Delta$		FIELD BOOK NO.	LL11	PAGE	72

**DEPARTMENT OF PUBLIC WORKS AND UTILITIES**  
**ENGINEERING DIVISION**  
**CITY OF GRAND JUNCTION, COLORADO**

**SEWER REPLACEMENT PROJECT 1980-81**  
**ALLEY-13TH. TO 15TH. BTWN. BUNTING & GLENWOOD**  
**CONSTRUCTION PLAN & PROFILE**

SHEET NO. **B-A**  
 OF \_\_\_\_\_  
 FILE NO. \_\_\_\_\_





**NOTES**

1. All concrete and asphalt pavement shall be removed along neatly cut or existing joints.
2. Remove & Replace asphalt pavement in accordance with typical trench detail shown on Sheet No. B (44" max pay width)
3. Remove M.H. ring, cover & grade rings and deliver to City Shops. Backfill manhole with 1/2" wash rock or other approved material.

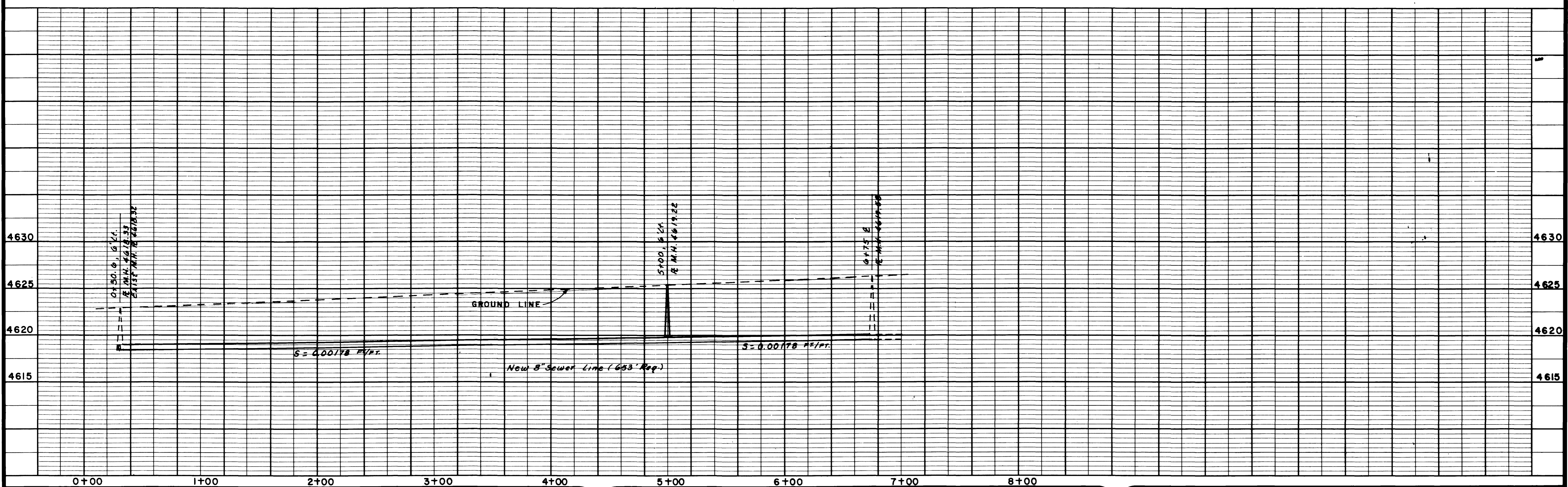
**CONTRACT PAY ITEMS**

CONTRACT ITEM No.	DESCRIPTION	APPROXIMATE QUANTITIES
10	8" San Sewer Pipe	653 LF
16	4' Dia. Manhole (5' to 10' deep)	2 Each
15	4' Dia. Manhole (0' to 5' deep)	1 Each
20	Pavement Replacement (Based on 44" max width)	266 SQ. YD.
19	Granular Stabilization Material	50 Ton
18	Backfill Existing Manhole	2 Each
14	Sewer Taps	20 Each

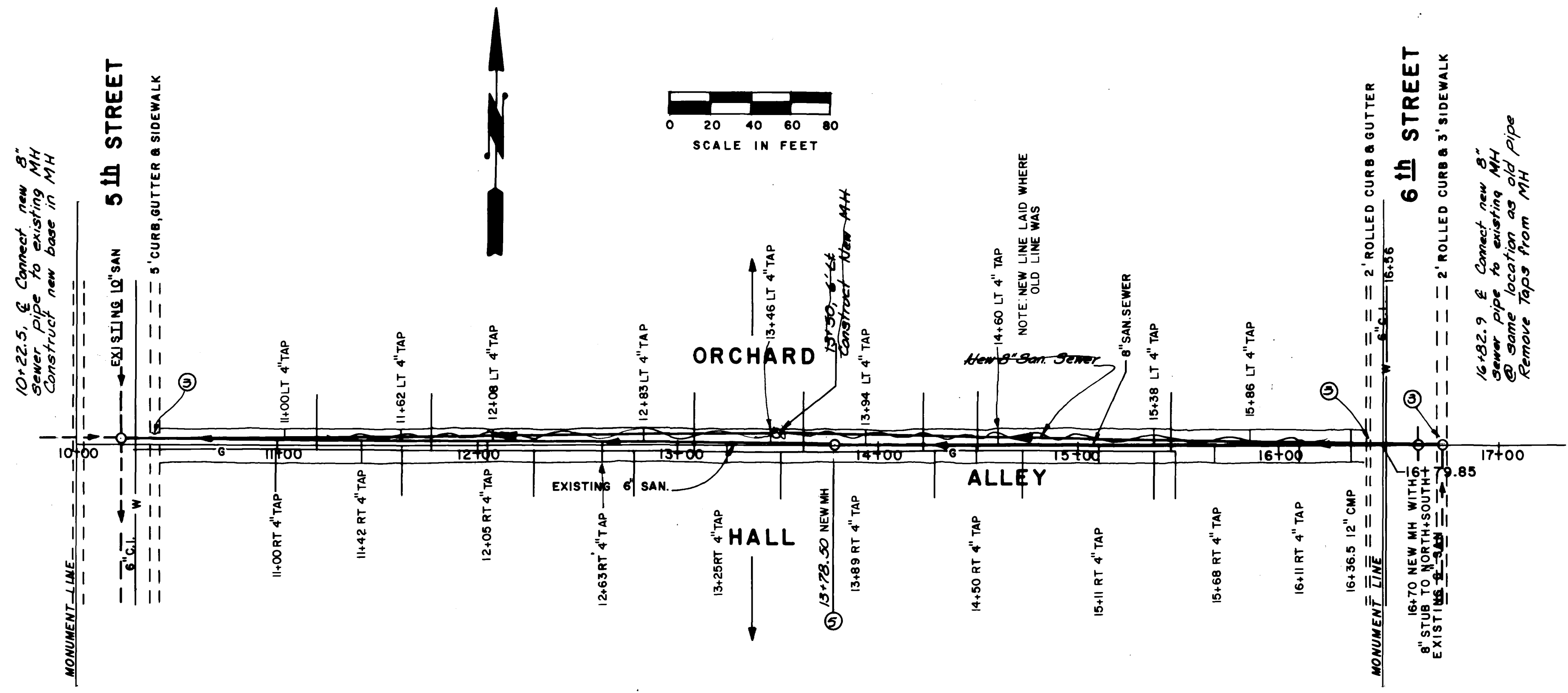
**INCIDENTAL ITEMS**

(WILL NOT BE PAID FOR SEPARATELY)

Remove Asphalt Pavement	266	SQ. YD.
Aggregate Base Course Under Pavement (Class 6)	84	Ton
Granular Bedding and Haunching Material	59	Ton



REVISION AS BUILT REVISION A REVISION B REVISION C	DATE 9-18-81    	DRAWN BY T.L.G. DATE 12-9-80 CHECKED BY T.A.B. DATE 12-12-80 APPROVED BY J.D.N. DATE 12-16-80 FIELD BOOK NO. LL-11 PAGE 96-99	SCALE PLAN HORIZ. 1" = 40' PROFILE HORIZ. 1" = 40' VERT. 1" = 5'	<b>DEPARTMENT OF PUBLIC WORKS AND UTILITIES</b> <b>ENGINEERING DIVISION</b> <b>CITY OF GRAND JUNCTION, COLORADO</b>	<b>SEWER REPLACEMENT PROJECT 1980-81</b> <b>ALLEY-ORCHARD TO WALNUT BTWN. 6TH &amp; 7TH</b> <b>CONSTRUCTION PLAN &amp; PROFILE</b>	SHEET NO. 9 OF FILE NO.
---	------------------------------	--	---	---	--	-------------------------------



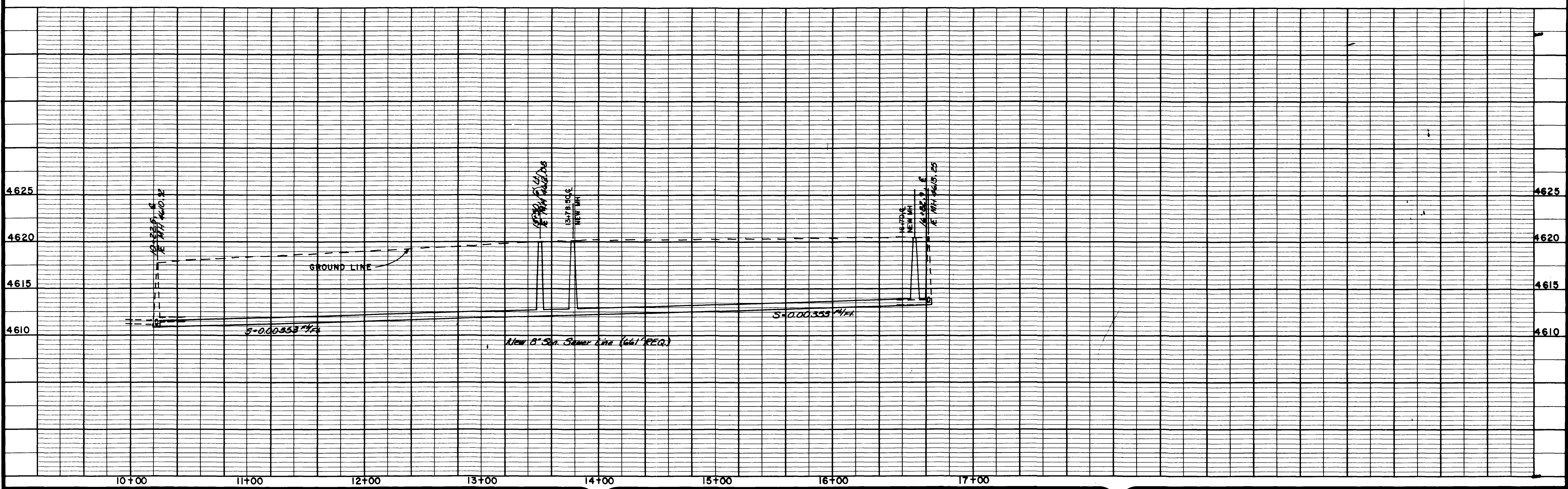
- NOTES:**
- All concrete and asphalt pavement shall be removed along neatly cut or existing joints.
  - Remove & Replace asphalt pavement in accordance with typical trench detail shown on sheet No. 13 (44" max pay width).
  - Remove concrete curb, gutter, sidewalk, and driveway slabs in 10' wide section. All concrete replacement shall be by licensed cement contractor.
  - Replace gravel surface on Alley over full width of trench (44" max pay width). Use C.D.O.H. class 6 aggregate base course (6" thick).
  - Remove MH ring, cover & grade rings and deliver to City Shops. Back fill manhole with 1/2" washed rock or other approved material.

**CONTRACT PAY ITEMS:**

CONTRACT ITEM No.	DESCRIPTION	APPROXIMATE QUANTITIES	UNIT
10	8" San. Sewer Pipe	661	L.F.
16	4' Dia. Manhole (5' to 10' deep)	1	Each
17	Reconstruct Concrete Manhole Base	1	Each
20	Pavement Replacement (Based on 44" max width)	21	SQ. YD.
21	Replace Gravel Surface Over Trench (6" thick) (Based on 44" max width)	245	SQ. YD.
22	Replace Concrete Driveway, Sidewalk or Curb Plan (Based on 10' Removal Width)	6	SQ. YD.
19	Granular Stabilization Material	50	Ton
18	Backfill Existing Manhole	1	Each
24	Replace Concrete Curb, Gutter & Sidewalk (5' wide)	10	L.F.
24	Replace Concrete Curb & Gutter (2' wide)	10	L.F.
14	4" Service Line Connection	21	Each

**INCIDENTAL ITEMS:**  
(WILL NOT BE PAID FOR SEPARATELY)

Remove Asphalt Pavement	21	SQ. YD.
Remove Concrete Slabs	14	SQ. YD.
Aggregate Base Course Under Pavement (Class 6)	7	Ton
Granular Bedding and Haunching Material	59	Ton



<b>DESCRIPTION</b> REVISION $\Delta$ AS-BUILT REVISION $\Delta$ _____ REVISION $\Delta$ _____ REVISION $\Delta$ _____	<b>DATE</b> 9-21-81 _____ _____	<b>DRAWN BY</b> NOP <b>CHECKED BY</b> TAB <b>APPROVED BY</b> JDM <b>FIELD BOOK NO.</b> LLLI	<b>DATE</b> 12-1-80 12-12-80 12-16-80 PAGE 103-104	<b>SCALE</b> <b>PLAN</b> 1" = 40' <b>PROFILE</b> 1" = 40' 1" = 5'	<b>DEPARTMENT OF PUBLIC WORKS AND UTILITIES</b> <b>ENGINEERING DIVISION</b> <b>CITY OF GRAND JUNCTION, COLORADO</b>	<b>SEWER REPLACEMENT PROJECT 1980-81</b> <b>ALLEY- 5TH TO 6TH BTWN. ORCHARD &amp; HALL</b> <b>CONSTRUCTION PLAN AND PROFILE</b>	<b>SHEET NO.</b> 10 <b>OF</b> _____ <b>FILE NO.</b> _____
---	--	--	---	--	---	---	---

